

CASCADE TOWERS

West Tower Suite 730

20829 72nd Avenue South, Kent, WA 98032

Twin 8-Story Class A Office Towers with a Fountain and Central Pedestrian Promenade.



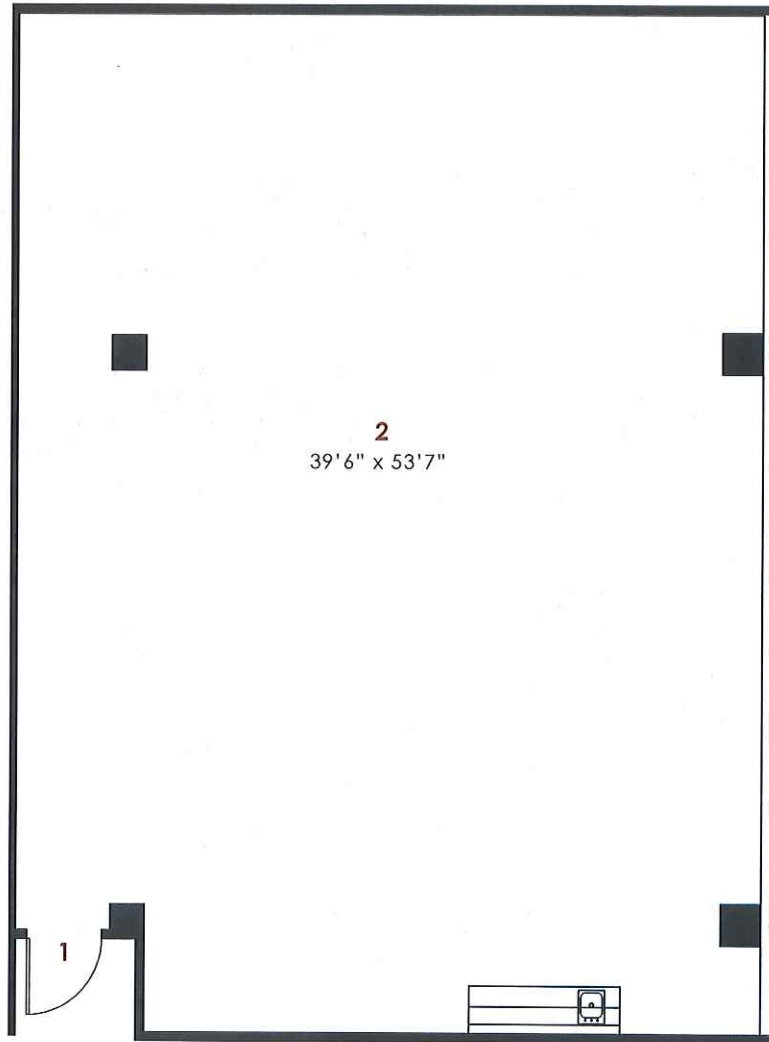
(253) 395-9226

Rob Samuels | Leasing Coordinator
RobS@FountainheadNW.com

www.FountainheadNorthwest.com

2,843 R.S.F

- 1 Entry
- 2 Open Office Area



CREATING THE **BEST PLACE**
FOR THE **BEST PEOPLE** TO WORK.



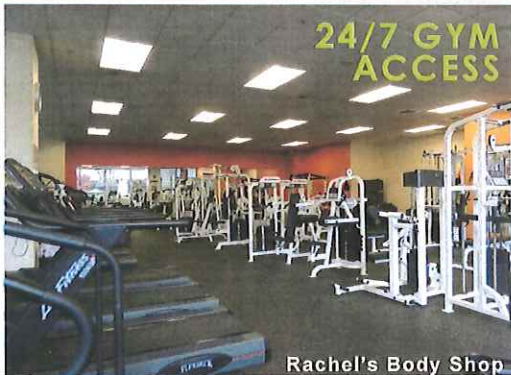
The Cascade Towers at CenterPoint Corporate Park.

ENGAGE YOUR EMPLOYEE'S NEEDS...

»» CULTURE & AMENITIES ««



- 1/4 & 1/2 Mile Outdoor Fitness Paths with Stretching Station
- On-Site Management, Engineering & Design Team
- Corporate Barbeque Areas
- Nature trail along Mill Creek
- Conference Center with rooms up to 200 people



24/7 GYM ACCESS

Rachel's Body Shop



EARLY EDUCATION

Bright Horizon's Child Care



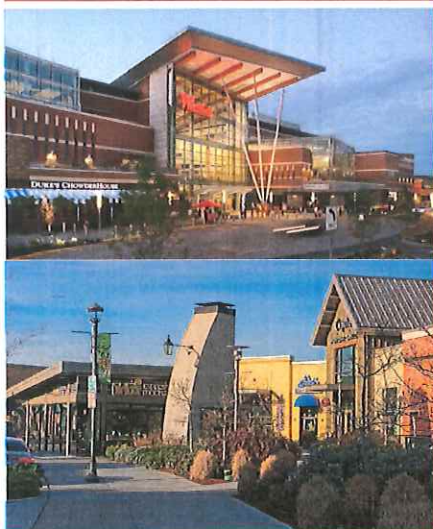
FULL SERVICE

Alki Bakery Cafe

Full service 24/7 fitness center & personal training (www.rachelsbodyshop.com)

Providing infant to pre-kindergarten programs (www.brighthorizons.com)

Providing breakfast, lunch & catering services. (www.alkibakery.com)



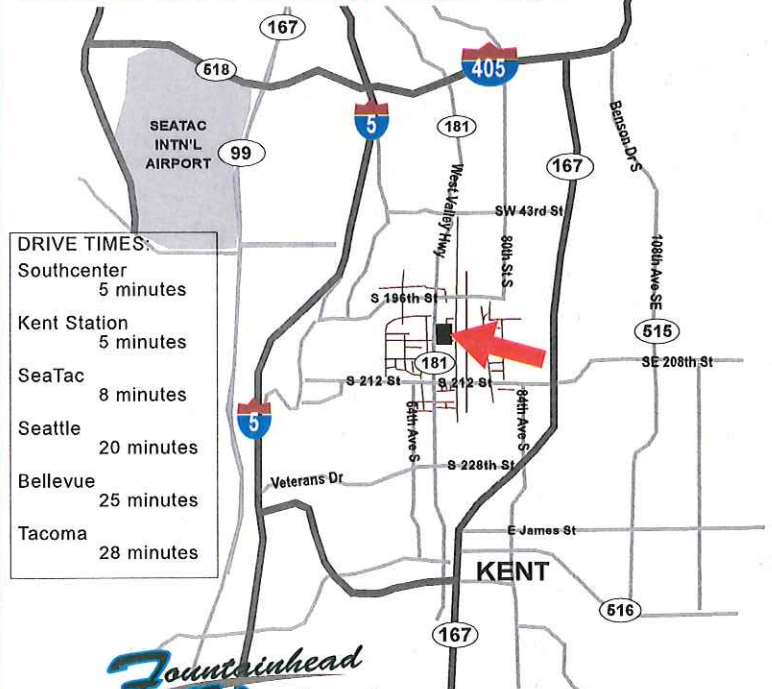
CLOSE TO EVERYTHING..

- Shopping
- Hotels
- Restaurants
- Entertainment
- Schools
- Housing

+ ON SITE TRANSPORTATION ROUTES

FOR MORE INFORMATION
www.FountainheadNorthwest.com
 253-395-9226

Access to FOUR major highways!



Fountainhead Northwest
OFFICE DEVELOPMENT

