

IpAlarm Module Set Up **VirtuAlarm model**

Note: This device is shipped configured for Ethernet connectivity. To use in this mode, connect the **BLUE** Jack (marked WAN) to your router and wait for the LEDs' to stabilize. Then go to page 4. "Connecting to Alarm Panel."

To configure for Wi-Fi, follow the instructions below.

Getting Started (What you will Need):

Before getting started, you will need the name of your Wi-Fi network (SSID) and the password for your Wi-Fi network.

For the setup process, it is not necessary to be next to the alarm panel for the first steps. In fact, it is recommended that you use a computer or laptop to complete the steps connecting the module to your WIFI network as the larger screen makes the setup process easier.

SETTING UP WIFI SETTINGS

Connection to power:

Using **ONLY** the power adapter that is supplied with the IpAlarm module, connect the power plug to the round connector on the IpAlarm module. (You will hear a beep as the unit powers up.) To power from your alarm panel, see "Panel Wiring Setup."

A **RED** LED closest to the POWER jack will illuminate when the module has power.

Connecting to the IpAlarm module:

From a smart phone, computer, or tablet, open your Wi-Fi settings and look for the Wi-Fi signal from the IpAlarm module. The Wi-Fi name/SSID will be ipalarm_XXXXXX, where XXXXXX is the last 6 digits of the MAC address printed on the sticker on the bottom of the IpAlarm module. (If you see the Wi-Fi name ipalarm_INIT, please see reset instructions on the addendum/last page.)

Choose this WI-FI connection.

Password: **ipalarmwifi** (all lower case)

Open an internet browser and enter 192.168.251.254 in the address bar.

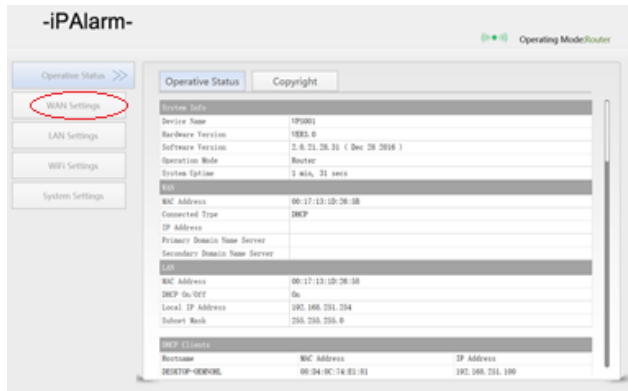
When the login screen appears:

Enter user name: **admin**

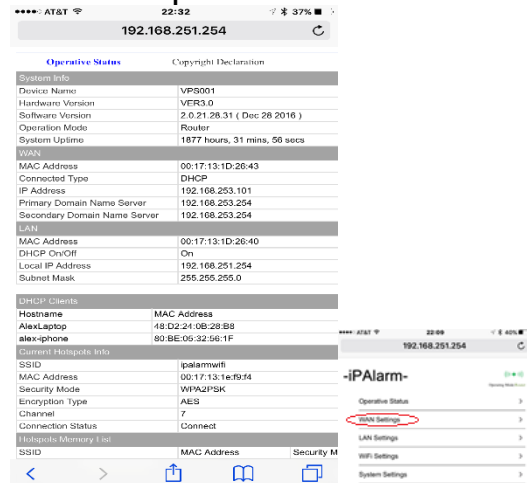
Enter Password: **admin**

The following page will appear:

PC Screenshot



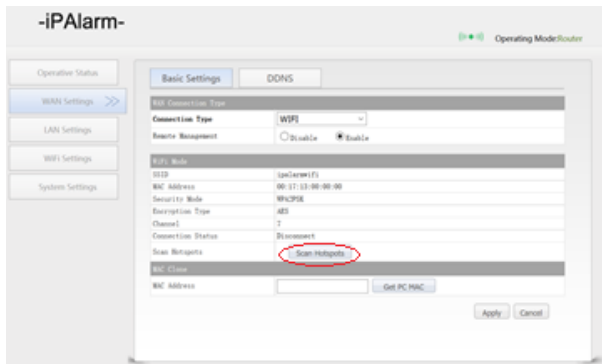
Smartphone Screenshot



If you do not see the menu on the left, Click **MAIN PAGE** at the bottom of the page (you may have to scroll down to the bottom).

Click WAN Settings, The following page will appear:

PC Screenshot



Smartphone Screenshot



At the top of the screen you will see a drop down window "Connection Type"

It will show "DHCP (Auto Config)"

Click on the drop down window arrow

Choose "(WIFI)"

Click <Scan Hotspots>.

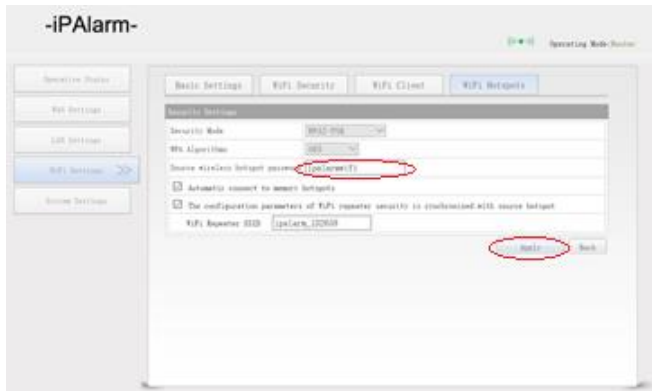
A window will open listing available WIFI networks.

Click on the WIFI network that you wish to connect with.

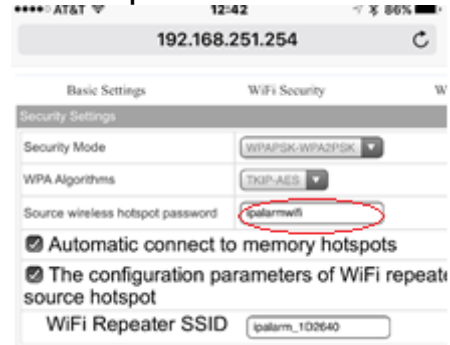
Click <Next>.

A window will open as follows:

PC Screenshot



Smartphone Screenshot



Enter your selected Wi-Fi password in the space next to “Source wireless hotspot password”

If the box next to ☐ *The configuration parameters of WiFi repeater security is synchronized with source hotspot* is checked, de select this option by clicking on the check and the mark will erase.

Click <Apply>.

You will see the message “The configured parameters have saved successfully”. (If you do not see this, click <Apply> again.)

Confirm that the information on screen is correct.

Click on “Reboot”

Wait for the unit click and the LEDs’ to stabilize. This will take approx. 2 minutes.

Disconnect the power from the IpAlarm Module and Wait 30 seconds.

Then power the module up.

NOTE: wait for the 2 **BLUE** and the 1 **GREEN** LED’s to illuminate, before continuing to the next step.

This will take 3 minutes while the module self-checks and connects to our server. If a software update is available, the module will automatically download the latest version. This may take up to 5 minutes. If the **GREEN** LED is flashing rapidly and consistently, a SOFTWARE update is underway.

When the **GREEN** LED is on solid, the update is complete, and the unit is ready for the next step.

Your module is now connected to your WIFI connection.

CONNECTING TO THE ALARM PANEL

Take your module to next to your alarm panel.

Connect the power supply to the module.

Remove the RJ31X or RJ11 plug (looks like a phone or network plug) that connects your alarm panel to the phone line (if it is connected) and connect it to the **RED**-outlined jack on the IpAlarm module.

DO NOT connect this cord to the **BLUE**-outlined jack.

Congratulations, your module is now connected to your alarm panel and router and able to send alarm signals.

To test alarm functionality, follow the instructions from your alarm company to send and confirm test signals.

Addendum

WIFI SSID = ipalarm INIT

Choose this WiFi connection – ipalarm_INIT.

Password: **ipalarmwifi** (all lower case)

Open an internet browser and enter 192.168.251.254 in the address bar.

You will see this screen:

PC Screenshot



Smartphone Screenshot



Click <Restart>.

Unplug the device for 30 seconds.

Re-start directions from the beginning.

Status LEDs'

Starting closest to POWER JACK

RED	POWER
YELLOW	LAN connected
BLUE	WIFI
BLUE	WIFI
GREEN	SERVER CONNECTED
WHITE	OFF HOOK

Reset button

On side panel closest to power connector.

Press for 5 seconds, to restore module to factory defaults.

Changing the Login Username and Password

Login to the IpAlarm module

Go to the Main page

Click on System Settings

Click on Login Settings (at the top right of the page)

Follow the on-screen instructions.

Configuring back to Ethernet, factory reset.

With the unit powered up and stabilized, press the reset button, located on the side of the module, (close to the power jack, on the right hand side) for 10 seconds then release.

Wait 2 minutes, then power the unit down for 10 seconds and power back up.

Follow instructions at the beginning of this document.