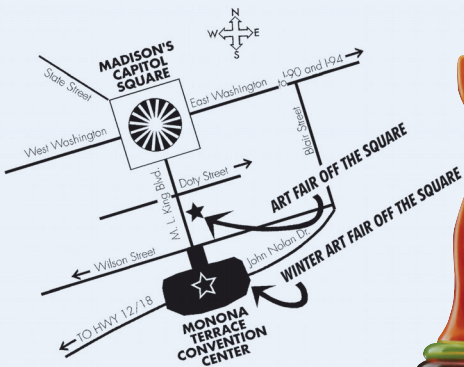




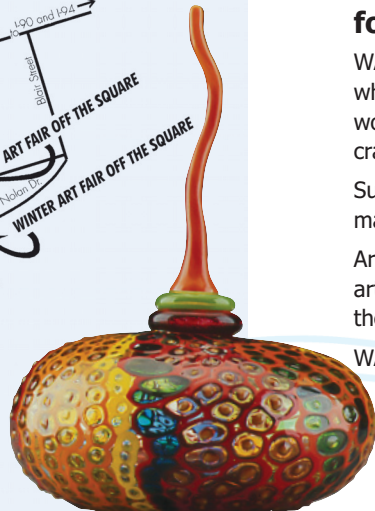
Wisconsin Alliance of Artists and Craftspeople, Inc.

strives to promote the rich fabric of the visual arts found in Wisconsin.

Formed in 1980, WAAC is a statewide organization with approximately 400 members consisting of fine artists and fine craftspeople.



Art Fair Off the Square is held on the 200 block of Martin Luther King Jr. Boulevard and the esplanade of the Monona Terrace Community and Convention Center. The Winter Art Fair Off the Square takes place at the Monona Terrace Community and Convention Center in Madison.



Promoting Art Fair Off the Square and Winter Art Fair Off the Square

WAAC produces two art fairs each year. **Art Fair Off the Square** is traditionally held the weekend after July 4th. It is located on the 200 block of Martin Luther King Boulevard and the walkway of the Monona Terrace Convention Center, Madison, Wisconsin.

The Winter Art Fair Off the Square typically takes place on the second weekend of November. It is located at the Exhibition Hall of the Monona Terrace Convention Center in Madison, Wisconsin.

Both art fairs are open to Wisconsin exhibitors only. Exhibitors are selected by a jury of professional artists. All exhibitors must be members of WAAC.

WAAC has an annual **exhibition of members' work** at the U.W. Hospital in Madison. This month-long exhibition is in February.

Supporting Young People in the Arts

WAAC encourages young artists by providing funding for educational programs. WAAC incorporates children's events into its art fairs, such as **The Young Collector's Corner**.

WAAC also provides support to the **Wisconsin Art Education Association (WAEA)**, involving statewide children, K-12 in the arts, and the biennial "Young at Art" exhibition at the Madison Museum of Contemporary Art.

As part of WAAC's continuing public education, the WAAC website, artcraftwis.org, contains an informational page to educate the public about a variety of media.

Providing Information and Instruction for WAAC Members

WAAC members receive **WAAC WORDS**, a newsletter which features information on the art fairs, WAAC's winter workshops and opportunities available to artists and craftspeople.

Subsequent to review and approval of content, members may request a **link from the WAAC website** to their own.

Artists' workshops such as marketing, legal issues, and other art-related topics are offered periodically in the beginning of the year. The **annual member meeting** is in March or April.

WAAC **public art showings** are open to members.

For more information about WAAC contact **608-204-9129 | wiaartcraft@gmail.com** or go to www.artcraftwis.org

To become a member or contributor,

please complete and return to:

WAAC
Lezlie Blanton, Executive Director
2450 East Mifflin Street
Madison WI 53704

Membership fees are included in the jury fee for artists applying to Art Fair Off the Square and/or Winter Art Fair Off the Square.

I wish to become a member of WAAC. Enclosed is my \$25 annual membership fee. A two-person team may join for a \$40 fee. Memberships expire on March 31 each year. Member must be a Wisconsin resident, an artist or craftsperson, and at least 18 years of age.

I wish to exhibit in the WAAC UW Hospital Show but take part in other WAAC events. Enclosed is my \$15 fee. If you have paid the \$25 annual membership fee, don't also pay this fee. Exhibition in the UW Hospital Show is included in your annual membership fee.

I wish to contribute to WAAC. Enclosed is my check for _____

Please make checks payable to: **WAAC, Inc.** WAAC is a 501 (c)(3) non-profit corporation. Contributions are deductible to the full extent of the law.

Name

Address

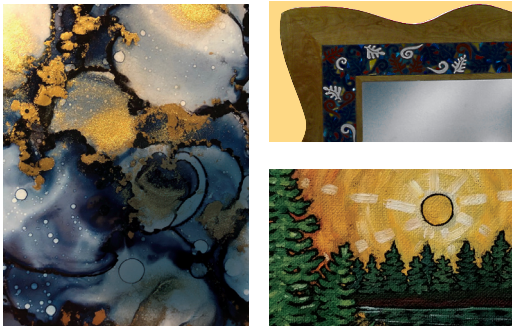
City State Zip

Media/Medium

Phone

Email

Web site



Artwork featured created by WAAC members:

- Ann Alderson Cabezas (Glass)
- Bruce Bodden (Painting)
- Joyce Fritz (Sculpture)
- Jan Gilkey (Painting)
- Cynthia Harper (Mixed 2-D)
- Cynthia Koshalek (Jewelry)
- Mike O'Connell (Painting)
- Jerry Reinwand (Pottery)
- Scot Schmidt (Mixed 3-D)
- Scott Simmons (Glass)
- Jon Walton (Photography)
- Kelli Greentree (Painting)

©2020



Wisconsin Alliance of Artists & Craftspeople, Inc.
 Lezlie Blanton, Executive Director
 2450 East Mifflin Street
 Madison WI 53704



Wisconsin Alliance of Artists and Craftspeople



The Fabric of Arts in Wisconsin



www.artcraftwis.org
 608-204-9129



Promoting
 Art Fair Off the Square
 & Winter Art Fair
 Off the Square

Supporting Young
 People in the Arts

Providing Information
 and Instruction
 for WAAC Members

