



GET READY FOR WINTER

**Generators
Heating
Roofing**



See page 11 for details



Table of Contents

- 2 Preventing Floods**
- 6 Generators**
- 10 Traction Alternatives for Vehicles**
- 13 Items to Carry in Your Car**
- 14 Protecting Your Pets in Winter**
- 16 Mountain Electric**
- 18 Roofing**
- 20 Think Snow**
- 21 Winter Driving**
- 24 Lake Forest Siding**
- 25 Chimney Fire Prevention**
- 26 Planning for Winter**
- 27 San Bernardino Fireplace**
- 28 Dock and Boat Prep for Winter**

Published by the

Mountain News

P.O. Box 2410, Lake Arrowhead, CA 92352

(909) 336-3555

Publisher: Harry Bradley

Project Leader: Laura Terry

Layout & Design: Jim Brown, Matthew Rice

Cover Design: Matthew Rice

Graphic Design/Production:

Jim Brown, Matthew Rice

Advertising: Harry Bradley,

Laura Terry, Angela Yap



Scan with smart phone to
visit our website.

Save Sanity, Money by ***Preventing Floods***

**By Johnny O'Brien,
O'Brien Plumbing**

For the quarter-million families whose homes are ruined and lives disrupted each winter because of frozen water pipes, frigid nights can quickly turn to ongoing, inconvenient, expensive ordeals.

Recovering from frozen pipes is not as easy as calling a plumber. A 1/8-inch crack in a pipe can spew up to 250 gallons of water a day, causing flooding, flooring and structural damage, and conditions for mold.

In the United States, frozen pipes cause enormous damage each year. Unlike natural disasters, this disaster is preventable. Simple precautions can save you from the mess, expense and aggravation that frozen pipes cause.

Winterizing your home is the most important thing to do to prepare for winter. Taking precautions can protect one of your most important investments from hundreds or thousands of dollars in repairs.

A big ally in the fight against winter repairs is a courtesy shut-off valve. More and more water companies are urging customers to install one. All full-time and

seasonal residents should shut off water before leaving home for an extended time.

A courtesy shut-off valve, installed next to the meter, allows water to be shut off to the house and the irrigation system quickly and conveniently. Without a courtesy shut-off valve, you risk broken pipes, extreme water loss and damage to your home.

With rising energy costs, winterizing is a good solution for the seasonal vacationer. Standard practice is to set the thermostat at a low temperature to keep indoor pipes from freezing. However, if the house is vacant in winter, draining the lines and other methods can relieve the need to run the furnace. This can save money and provide peace of mind.

Three water agencies—Crestline Village Water District (CVWD), Lake Arrowhead Community Services District (LACSD) and Running Springs Water District (RSWD)—offer some great tips for winterizing.

Important advice from CVWD tells customers to check all water lines, from the meter to the house, to be sure no lines or fixtures are exposed. This includes lines in the build-up, the

FLOODS continued on page 4

We Sell Houses All Winter Long!

Don't Wait For Next Spring... We Sell Nearly 1/2 of Our Property Listings From October To March!

Why List Your Home With Coldwell Banker Sky Ridge Realty?

- ★ We List & Sell More Property Than Any Other Real Estate Office On The Mountain!
- ★ Number 1 on the Mountain Since 1985!
- ★ 52 Full Time Sales Associates – Full Time Support Staff for Your Needs.
- ★ Open 7 Days a Week 8:30 a.m. to 5 p.m. with 24-Hour Voice Mail. State-of-the-Art Computer Systems and website.
- ★ Conveniently Located in Blue Jay Village and Lake Arrowhead Village.
- ★ Proud Supporters of the Local Community.
- ★ Management Services Coordinator provides Relocation and Referral Services.
- ★ Adhere to the Highest Ethical & Professional Standards.
- ★ Leaders in the Mountain Real Estate Industry in Innovative, Trend-Setting Ideas.
- ★ All Listings Are Represented on cbskyridge.com, coldwellbanker.com, realtor.com and 100's of other websites.



\$247,500



\$465,000



\$569,000



\$628,800



\$180,000



\$249,000



\$629,000



\$359,900



(909) 337-LAKE
www.cbskyridge.com

FLOODS continued from page 2

attic, lines within outside walls of the house and any others located in unheated areas such as a garage. Insulate well to prevent freezing.

Next, disconnect and drain all outdoor hoses from faucets. One hard freeze can burst either the faucet or the pipe it's connected to.

For those spending time away this winter, LACSD suggests: Before vacating your home, shut off water to the house using the master shutoff or customer shut-off valve. Then open and drain all household and irrigation lines. Trapped water can freeze, causing pipes to expand and break. Once lines are drained, close all household and irrigation lines again before leaving home.

Maintaining low heat in your home does not ensure the

pipes will not freeze. But taking precautions can save you headaches and costs of frozen or broken pipes this winter.

In homes with fire sprinklers, the system must remain active at all times including in winter, RSWD advises. Follow the manufacturer's instructions for your sprinklers to ensure the system is prepared for winter.

Need help winterizing? O'Brien Plumbing does free estimates and offers a winterizing service as a convenient way to get your house ready for winter. O'Brien's can identify parts of the plumbing system most susceptible to freeze and better prepare them. Whether you are a full-time resident or won't be up until spring, O'Brien Plumbing can tailor a winter program to your needs.





ARROWHEAD
HOME SERVICES

Member of Lake Arrowhead Chamber of Commerce | Bonded and Insured

SERVICES INCLUDE

- Window Cleaning
- Home Cleaning
- Carpet Cleaning
- Yard Maintenance
- New Construction Clean Up
- Handyman Service
- Concierge Service

ASK ABOUT OUR

Call for a **FREE** Estimate or Appointment.

(909) 337-7979

(LAKE ARROWHEAD)

"Formerly AI's Home Services" | In Business Since 1973

www.arhd-homeservices.com



COMPLETE PLUMBING SERVICE & REPAIRS
Bonded & Insured

O'BRIEN PLUMBING

ELECTRONIC Shut-off and Drainage Systems
Copper and PEX Repiping Specialists

- ☘ Frozen Pipe Repair ☘ Insulation of Pipes
- ☘ Courtesy Shut-off Valve
- ☘ Water Heaters "30, 40 and 50 Gallon in Stock"
- ☘ Gas Lines Installed or Repaired
- ☘ Video Pipe Inspections
- ☘ Leak Detection
- ☘ Clogged Sewer Drain Cleaning and Repair

Free Winterizing Estimates

909/337-3743





909/338-8885

LICENSE #375228




EMERGENCY SERVICE



OnTop ELECTRIC

Eddie Urban (Formerly of Urban Electric)

Winter Special!
Keep Your Family Safe from Electrical Fires!

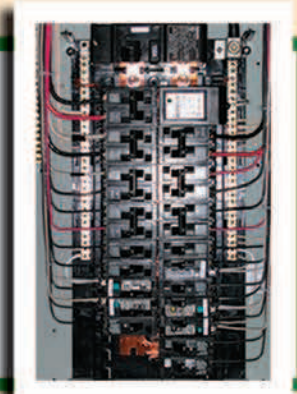
100 Amp Main Electrical Box Upgrade

New Breakers
Included!

\$999

Before

After



Save Money! Upgrade to LED Lights!

**20%
OFF**
 1st Service Call!

FREE ESTIMATES

7 Days a Week



**Get Ready for Winter with a
 Reliable Generator for the Family!**

Free Estimate • Professional Installation

**24
HOUR**
 Emergency Service

MILITARY DISCOUNT

Residential • Commercial • Industrial

Blessed to serve the mountain community from Crestline to Big Bear since 2008.



951•850•6521



Bonded & Insured • Lic. #1014232



Are You Ready for Winter?

Winter Dock Watch Program

Sign up for Dock Watch this winter to secure peace of mind for your investment, your dock and your stair extension.

Ready for a New Dock?

Take advantage of our Off-Season Rate!

MJS Docks offers the following services:

Aluminum Docks, Gangways & Piers

Aluminum Extension Stairs

Solar Boat Lifts

Padding and Re-Decking, PVC Decking

Canopies - Welding & Steel Fabrication

All Maintenance & Repairs, Painting, Dock Boxes, Ladders



Scorziell Development, Inc. • www.LakeArrowheadBuilder.com



Benefit From Owning a Generator

By Andrea Garcia

A generator is an appliance that almost needs an excuse for ownership—for those living on the mountain, that is reason enough. Though generators, and their service, can tend to be more on the expensive side, homeowners and business owners can really benefit from having one. It is a smart investment that can help during a stormy day when you need to use your computer to work, or for when the lights go out and your house begins to freeze. When a bad storm hits the mountain, and the mountain begins to lose power, owning a generator might making surviving a little bit easier.

Having a generator can help a household remain calm during a cold winter night storm. For example, homeowners are able to

use appliances, power the heater to warm up their house, maintain their food cold or frozen and, of course, have lights. There really is no way to tell when you will need the generator, or if you will need it, but investing in one for any emergency might just come in handy.

Some may think that having a generator is only a necessity for winter, so they choose to opt out of getting one. Though generators do become more useful during winter, it isn't always weather related. The truth is, living without power is not as easy as it may seem. The things we use all hours of the day are no longer accessible if the power is out, and a generator is not kicking in to power your home.

An important part in getting a generator is choosing one that is the right size for your house-

GENERATOR continued on page 8

Get Ready For THE SNOW

with these Great Deals:



Save Additional 10%
on **EASYHEAT** Tapes



LENGTH:	3 Feet	6 Feet	9 Feet	12 Feet	15 Feet	24 Feet	30 Feet
PART #:	549851	549878	549886	549894	549908	549924	549932
REGULAR:	27.99	30.99	32.99	38.49	39.99	44.99	46.99
SALE PRICE:	25.19	27.89	29.69	34.64	35.99	40.49	42.29



EASYHEAT Roof & Gutter
De-icing Cables

LENGTH:	20 Feet	60 Feet	80 Feet	100 Feet	120 Feet
PART #:	549940	549967	549975	549983	549991
REGULAR:	49.99	69.99	79.99	104.99	114.99
SALE PRICE:	44.99	62.99	71.99	94.49	103.49

We Also Carry A Large Assortment Of
Snow Poles & Markers!
Shoe Chains, Ice Scrapers
As Well As De-icing Chemicals.

**We Have
Fireplace
Accessories
in stock**



Firewood
Racks &
Covers



Firewood Grate



Fireplace
Screen, Tools
& Rack Set

Or See Us for Special Orders



Visit us at RimLumber.com • Shop online at DoltBest.com

909-337-6262 26491 Pine Avenue, Rim Forest, CA 92378

Open Monday to Friday: 7 a.m. to 5 p.m. • Saturday: 8 a.m. to 4 p.m.

Discounts apply to stock on hand. Prices and Coupon offers good until 12/30/16.

GENERATOR continued from page 6

hold or business. With help from Eddie Urban—owner of On Top Electric—and his team, homeowners can ensure they are getting a generator that will service their home the way they need, and expect.

“We install Generac generators, we service them and install them,” Urban said. “We are a full service electrical company.” Generac is one of the leading manufacturers of generators.

Along with getting generator services done with On Top Electric, Urban and his team install whole house surge protectors as well. Surge protectors protect against lightning strikes, and protect appliances and TVs.

If you are thinking about purchasing a generator, right now may be just the time for you. On Top Electric provides services

to residential, commercial and industrial clients. If interested, you can order a Generac generator and receive free freight, paid sales tax and free first-year service as part as On Top Electric’s winter special. The service includes oil, oil filter, spark plugs, air filter, and a check/cleaning of the battery. On Top Electric eases the process of installing and servicing generators for its customers.

“Together we want to try and take over as the top electrician on the mountain,” Urban said. “We want to make sure we are a strong team.”

When thinking about purchasing a generator, think about the following: fast delivery of power after power failure, staying in comfort during a blackout, food staying cold or frozen, and



COURTESY EDDIE URBAN

Eddie Urban, owner of On Top Electric and the team.

the ability to normally operate your home or business.

For more information on Generac generators, and On Top Electric, call (951) 850-6521. Customers can receive

a free estimate seven days a week, and On Top Electric offers military discounts as well. On Top Electric serves the mountain community from Crestline to Big Bear.

Are You Ready for Winter?



We Have the Coverage You Need

Homeowner / Auto / Renters / Landlord / Life & Boats and a large variety of other products!

Let me protect your assets.

Specializing in Senior Specific Needs.

Our experienced and customer service oriented staff will happily assist you with all your insurance needs.

Call Shelli at 909-337-7111

26432 Highway 18
Rim Forest, CA 92378

License #0K92384



We work with ALL insurance companies!



- Heavy collision repairs
- Alignments • Suspension
- Towing Available
- Student and fleet discounts*

AUTO BODY DAVIS AND PAINT

Monday - Friday 8-5

909-338-9008

23532 Crest Forest Drive • Top Town - Crestline

*Some restrictions apply.





San Bernardino Mitsubishi

(909) 884-7700 • www.SBMitsu.com

**Get ready
for what's
coming...**



OUTLANDER



**OUTLANDER
SPORT**



LANCER



**10-year
100,000-mile
POWERTRAIN LIMITED WARRANTY**

See retailer for details.



**Contact Sales Dept. • Se Habla Español
645 Auto Center Dr. • San Bernardino, CA 92408**

We provide new and pre-owned sales, service, parts and financing. Please visit us to view and test drive a new Mitsubishi. San Bernardino, CA, Rialto, Fontana, Colton, Grand Terrace, Highland, Redlands, Loma Linda, Yucaipa, Big Bear, Arrowhead, Cherry Valley, Beaumont, Banning, CA. **Manufacturer's Suggested Retail Price. Excludes destination/handling, tax, title, license etc. Retailer price, terms and vehicle availability may vary. See your Mitsubishi retailer for details.

All About *Alternatives for Traction*

An all-wheel drive (AWD) vehicle is ideal for quickly changing road conditions. Drivers can move from one kind of road surface to different conditions without pulling off the road, getting out of the vehicle and putting snow chains on—or taking them off. This is helpful when driving through snow before and after encountering roads without snow.

AWD cars have on-board computers that sense when wheels slip, and can assign power to wheels that still have traction.

Cars equipped with AWD have big advantages over two-wheel-drive vehicles. Most important is added traction. If one or two wheels lose traction due to snow, ice or mud, the vehicle keeps moving ahead. Two-wheel drive vehicles can flounder and spin wheels.

Other AWD pluses include performance and handling. Better

traction means faster acceleration if needed. Steering is better because front wheels can be devoted to steering and gaining sideways traction, instead of driving, which involves forward traction. AWD vehicles handle better because of even weight distribution, which results in consistent handling.

Another advantage is confidence about not getting stuck. Drivers can navigate uneven terrain where a wheel might lose touch with the ground. Assuming other wheels have enough contact with the road surface, the vehicle continues to move forward. AWD vehicles outshine two-wheel drive on muddy surfaces and in shallow water. However, when flood conditions are present, avoid driving through water. Unknown objects might be under the surface or the road beneath might be washed out.

Drivers in AWD vehicles generally cruise through the California Highway Patrol (CHP) checkpoints for chains, except when nature demands that all drivers put chains on.

CHAINS

Before buying chains or cables, check the vehicle manual for specific brands of tire chains or specifications for traction devices the auto manufacturer recommends. Check chains for proper fit right away, and again if you buy new tires.

Don't wait for a storm to discover the chains don't fit the tires. Check early in the season to be sure they're in working order. Keep chain repair links in your vehicle along with a flashlight and other necessities. (See related story.) Even if weather is mild, always

keep chains in your car.

Know if your vehicle is front or rear-wheel drive, and install chains on the drive wheels. Never install on non-drive wheels.

Before departure, check Caltrans at www.dot.ca.gov for road conditions. Or contact the Caltrans Highway Information Network (CHIN) at (800) 427-7623. Save this number in your cell phone to check for updates.

As you leave home, put an extra car key in a secure pocket to avoid locking yourself out of the car when putting on chains.

Check to be sure tread is in good condition and tires are inflated properly. If you need air in the tires, fill the gas tank, too; driving with chains reduces fuel efficiency.

TRACTION continued on page 12

You asked... We listened.

Mountain Transit will begin offering **Saturday Service on Route 2 & Sunday Dial a Ride Service**

In the RIM area beginning: **November 14th, 2016!**



For hours and service area information call 909-878-5200 or visit:

mountaintransit.org

Dial-a-Ride Service is not just for Seniors! - Anyone who lives more than 3/4-mile from a Mountain Transit fixed-route stop, but within the Dial-a-Ride service area may utilize this service!

Don't be left to wonder
"Where's my Bus?"



See your bus approaching
in real time!

1 Search for "Doublemap" in your smart phone's app Store to Download the FREE bus tracking app!



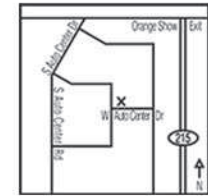
2 Select "Mountain Transit" as your transit system.

3 See all nearby route options and departures instantly!

SUBARU of San Bernardino

Contact Sales Department **(888) 457-8408**
 Se Habla Español

www.subaruofsanbernardino.com Like us on **facebook**



645 Auto Center Dr., San Bernardino 92408 215 Freeway, take S Auto Center Dr/Orange Show Rd West, Left on Camino, Right on W Auto Center Dr.



Winter is coming...

**Great Selection of All-wheel drive Subarus in Stock
 Call for current low financing offers**



Complimentary scheduled maintenance for 2 years or 24,000 miles.

Includes: Oil and filter changes, tire rotations, cabin filters, all recommended inspections, and road tire hazard coverage.

Purchase or lease any new (previously untitled) Subaru and receive a complimentary factory scheduled maintenance plan for 2 years or 24,000 miles (whichever comes first.) See Subaru Added Security Maintenance Plan for intervals, coverages and limitations. Customer must take delivery before 12-31-2016 and reside within the promotional area. At participating dealers only. See dealer for program details and eligibility.

Winter's Coming... ❄️



PROTECT YOUR INVESTMENT WITH KIWI DOCKS' DOCK WATCH PROGRAM



UNSURPASSED IN QUALITY CRAFTSMANSHIP
& CUSTOMER SATISFACTION

(909) 336-5494

www.KiwiDocksInc.com



Trex
Gold Pro
Contractor

Lic. # A793432

TRACTION continued from page 10

CONTROL ZONES

In winter, motorists might encounter chain controls in mountain areas. Signs posted along the road will indicate one of three requirements:

R1: Chains, traction devices or snow tires are required on the drive axle of all vehicles except four-wheel/all-wheel-drive vehicles.

R2: Chains or traction devices are required on all vehicles except four-wheel/all-wheel-drive vehicles that have snow tread tires on all four wheels. Snow tread tires have deep, aggressive tread patterns. These tires are identified on the sidewall with the words "mud and snow" or the letters MS, M/S or M+S stamped into the sidewall.

R3: Chains or traction devices are required on all vehicles, no exceptions.

Drivers must put chains on when required. CHP will cite and fine drivers who don't. The distance

between requirement signs and the checkpoint is about a mile. Pull completely off the road to the right to put on chains. Do not stop in a traffic lane and do not block traffic.

If you use the services of a chain installer, get a receipt and write the installer's badge number on it in case of a misunderstanding later. Chain installers are not Caltrans employees. They are independent business people, and are not allowed to sell or rent chains.

When chains are required, the speed limit is 25 or 30 miles per hour maximum. After driving a short distance, find a good place to pull over and check chains for tightness. It might be necessary to tighten them again. If a chain becomes loose, either refasten or remove it before it wraps around the drive axle.

When you pass signs reading "End of Chain Control," pull off where you can remove chains safely.

**30 Years
Experience**



**Contractor's
Lic. #663503**

SHAPE ELECTRIC

**BETTER "SHAPE"
... THAN SORRY!**

**Offering the Community
Reliable and Competent
Electrical Service at
Affordable Prices**

**I Specialize in:
Commercial • Industrial • Residential
Emergency Service Calls • Expert Troubleshooting**

*Please give me a
call and compare
my prices with
the competition*

909-337-4345
P.O. Box 1058, Blue Jay, CA 92317
Fax: 909-337-3857



Items To Carry *in Your Car*

You and your vehicle should be properly equipped all winter long, whether you are making short trips to the grocery store, if your commute to work is short or long, or if you anticipate a long road trip to visit distant family or friends.



- Cell phone (keep with you at all times) and charger
- A brightly colored cloth (tie to antenna or at top of rolled-up window to signal distress)
- Flashlight and extra batteries
- Compass
- Matches in a waterproof container
- Scissors and string or cord
- Duct tape and WD-40

SNOW SUPPLIES

- Ice scraper and snow brush
- Broom to brush snow off car
- Snow shovel
- Sand, kitty litter or burlap for traction

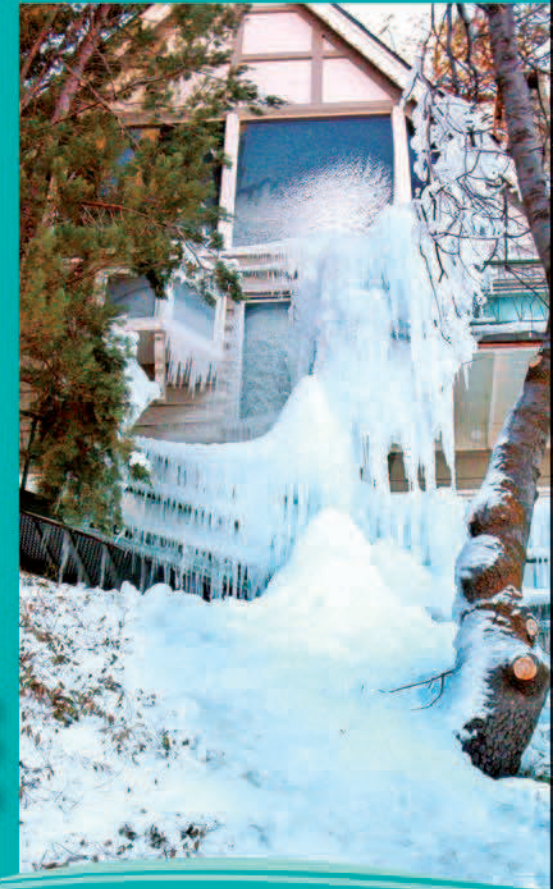
VEHICLE SUPPLIES

- Chains or cables that fit wheels properly
- Chain repair links
- Jumper cables
- Tool kit
- Properly inflated spare tire, wheel wrench, tripod jack
- Tire sealant
- Tow chains
- Reflective triangles or flares
- Windshield cleaner
- Seat belt cutter and window breaker
- Roadside flares

PERSONAL SUPPLIES

- Sunglasses
- First aid kit
- Small supply of any essential medication
- Water
- Nonperishable high-energy foods like unsalted nuts, dried fruits, hard candy
- Extra clothes, warm socks, gloves, hats
- Blankets
- Old towel for cleaning and drying hands

STOP WINTER in its *Cold, Cold Tracks:* WINTERIZE



LACSD and YOU: Working To Save Water Everyday

HERE ARE EASY STEPS TO WINTERIZE YOUR HOME.

- Install a customer shut off valve and shut off water to your home or cabin if you are not going to be there. If you don't have a customer shut off valve, call LACSD to have the water turned off at the meter
- Disconnect and drain hoses and water lines
- Insulate outside hose bibs
- Drain irrigation system
- Insulate pipes or faucets in unheated areas such as garages and cold crawl spaces
- Seal off access doors, air vents, and cracks in unheated areas

Freezing temperatures don't have to mean shattered pipes and frozen ice sculptures engulfing your home. Avoid costly repairs. Dodge unexpected high water bills. Before leaving the mountain, shut off water to your home or cabin.



www.lakearrowheadcsd.com

Protect Your Pets in Winter



Most of us live up in the mountains because we enjoy the four seasons, including winter. Our pets live up here because of us, their furless family members. Maybe they enjoy cold weather and snow—but only up to a point. Whatever the circumstances, they want to be safe, warm, dry and protected all season.

Domestic cats are susceptible to the cold and can freeze when left outdoors. Keep Kitty inside during cold winter weather.

Stray cats might hide under the car to keep warm. To avoid injuring a stray, alert the cat by banging on the car and check around it before getting in to start the engine.

Most pet birds are tropical varieties that do not tolerate low temperatures. Keep them inside with cages located away from drafty windows and doors.

After bathing your dog, dry thoroughly, especially

before going outside.

When grooming a dog in autumn and winter, don't shave the coat down too short. Fur on long-haired dogs provides some insulation, but a fur coat is not enough protection. Be sure an outdoor dog has a warm, dry shelter that is free of drafts and that complies with applicable state laws.

Some dogs feel the cold more than others. A sweater can keep short-haired breeds, puppies and older dogs warm. Consider an insulated turtleneck sweater that covers the belly and that protects to the tip of the tail.

Pets should have a cozy spot to sleep away from drafts and protected from the cold floor. A blanket and a down-filled pet bed will provide sufficient comfort.

Even an outdoor dog should be primarily indoors during cold winter weather. Only a few arctic breeds will prefer to spend more time outdoors if a house is kept too warm.

Warm indoor air can incubate and hatch flea eggs that are present on a pet. Don't skimp on flea and tick protection in winter.

Keep dogs on a leash when out in the snow. They can lose their scent on snow-covered roads and might be unable to find the way home. Be sure dog ID tags are current. According to the ASPCA, more dogs are lost in winter than any other season.

Prolonged exposure to ice, snow, salt and pavement can result in blisters and cuts on pads. Consider protecting paws with booties, a coating of petroleum jelly or a light spray of cooking oil.

Salt, antifreeze and other chem-

icals used to melt snow and ice will irritate your pet's feet. To soothe the feet, your pet might lick them, resulting in irritation to the mouth. Wipe all paw pads with a warm, damp washcloth and dry with a towel after each walk.

Antifreeze smells sweet to pets and can attract an inquisitive animal. Clean up spills from your vehicle because ingestion of antifreeze can be fatal. The ethylene glycol is a lethal poison to dogs and cats. Consider switching to products that contain propylene glycol instead.

Puppies are sensitive to the cold, making house-training difficult in winter. Be patient and consider paper-training until spring. Older dogs that are already housebroken should be walked outside only briefly to relieve themselves.

Just as pets should not be left in the car in summer when they can overheat, a vehicle can become cold enough that a pet might freeze to death. Unless you are traveling a long distance, your pet is better off left at home.

Don't Wait for the Temperature to DROP!

CALL Our Design Specialists for FREE QUOTES on New **LENNOX** Home Comfort Systems.



Robby Dustin Kevin Andy Rick

Stay Warm, Be Safe, Think Brrrgeson's!

Family Owned and Operated Since 1949!

Serving the Inland Empire and Beyond for Over 67 Years.



Call to Schedule Your 15 Point Premier Furnace Maintenance Appointment Today!

Burgeson's Specializes In:
Service Maintenance & Repair
Quality Installations
Zoning Systems/Air Balancing
Air Filtration/Purification
HVAC/Duct Design

Many Financing Options Available Including:



Up to **\$5,200** AVAILABLE in Rebates, Tax Credits, Discounts & Utility Incentives on Qualifying Equipment. But HURRY! \$750 in Rebates Expires November 15th.

Ask us about getting up to **\$3,000** in Rebates and incentives offered by Energy Upgrade California® Home Upgrade.

PARTICIPATING CONTRACTOR



Home Upgrade Energy Upgrade California®

909-792-2222



burgessons.com



951-683-1003

Lic. #683295



Full Concrete Services

- Remove/Replace Driveways
- Retaining Walls
- Concrete Foundations
- We Do Our Own Demolition

Free Estimates

Asphalt & Sealing Paving & Grading

Proudly Serving
the Mountain
Communities for
over 45 Years



(909) 338-5432 | Fax (909) 338-1717

www.MickHillEnterprises.com | MickHillEnterprises@yahoo.com

22912 Vista Lane, Crestline | P.O. Box 9208 | Cedarpines Park, CA 92322

Mountain Electric: *Get Ready For Winter*

**Submitted by
Mountain Electric & Lighting**

Mountain Electric & Lighting is celebrating its six-year anniversary this November.

As most know, the company changed its name to reflect where it is located, who they are and what they stand for.

Mountain Electric prides itself in

more than just "getting the sale." Workers want to educate customers by providing service for their electrical needs.

By focusing on the customers' needs, Mountain Electric has established a strong loyal following. "We execute what we promise," is Mountain Electric's motto. Customers will find that phone calls are always answered,

and the office is open six days a week. Mountain Electric believes a business is a place the customer can come and talk directly with the staff and even enjoy a bag of popcorn.

The customer base is varied from local businesses, contractors, a mix of second homeowners, and out-of-town leads from the Generac generator factory.

Today almost all homes use significantly more electrical power than 20 to 30 years ago. The home's electrical panel is the heart of the whole electrical system. Just like your heart, it must be maintained and cared for. When breakers or wires become loose, they heat up and can over time spark or worse short out or melt.

Two brands of electrical panels



WINTER PREPARATION

Serving From CRESTLINE to BIG BEAR and **ALL MOUNTAIN AREAS**
We Strive To Exceed Your Expectations!

**Don't Be Left in the Dark,
Be Prepared!**

**Add Peace
of Mind**

Factory Authorized

- Sales
- Service
- Warrantee
- Installation



**Anniversary
Special Package**

SAVE \$672⁰⁰

FREE ESTIMATES

We Have Financing Available*
and the 18 Month
No Interest Option
is GREAT!

synchrony
BANK
*O.A.C.

**HOME
ELECTRICAL
SAFETY
ANALYSIS**

OVER 50 Categories & Points
Inspection of All Vital Areas of
Your Home's Electrical System.

Includes **FREE ESTIMATE**
To Correct Any Deficiencies

Now Only \$59⁰⁰

Reg. \$129
Schedule Now • Valid to 12-15-16

**Mountain
Electric
& Light**

**Full Service
Electrical**



909 744-8838

Mountain.Electric@Yahoo.com
www.MtnElectric.net

26914 Hwy 189, Agu

made in the 1950 to 1970s that are obsolete now are the Federal Pacific Electric and Zinsco panels. If you have or suspect you have one of these panels and wish a free inspection and analysis, give Mountain Electric a call at (909) 744-8838.

Mountain Electric is proud of its ability to provide homeowners and commercial accounts with the most technically advanced electrical panels. Mountain Electric carries in stock a variety of Square D main electrical panels and breakers.

Reliable electric power in your home is essential for the safety and security of your family. To that end Mountain Electric offers a 50-point all inclusive home electrical safety inspection and analysis for \$129. For its six-year anniversary Mountain Electric is offering it at only \$59, and free with any Generac standby generator or main electrical panel up grade to a Square D panel.

Mountain Electric and Lighting is a full service authorized Generac generator, sales, service and warrantee

dealer. If you have been on the fence about purchasing a standby generator, now is the time. Mountain Electric & Lighting has an excellent financing program available, with an 18-month no-interest option.

County permits are required for new main electrical service panels and stand-by generators. Mountain Electric works closely with Edison and the building department to coordinate and expedite the requirements of both.

Mountain Electric's company structure has gone through a change this

year. Terry and Glenda Welch, owners of Mountain Electric and Lighting, wanted to reward loyalty, commitment, energy, passion and long hours of hard work for two key employees. Joel Saucedo and Hannah Pellegrini have both been with the company for years. Terry and Glenda felt the logical step was to bring them in as partners in the business. Hannah is the Office Manager, Joel Saucedo is Vice-President Field Operations. Their roles have been expanded and customers will hear more from them as the years go by.

STARTS WITH GREAT SAVING

- **QUALITY**...Of Products
- **VALUE**...In Pricing
- **SERVICE**...Exceeding Expectations
- **INTEGRITY**...In All Business Dealings

Mountain Electric & Lighting
Lic. #913835

Service Contractors



a Fria / Blue Jay, CA

SURGE PROTECTORS
For The Whole House
Washer, Dryer, Freezer,
Refrigerator, Microwave

\$25,000 Product
Loss Protection

SPECIAL
With Any Other Service

\$59⁰⁰

Reg \$129 • Whole House Version
Valid to 12-15-16

 Like us on
Facebook

**Don't Settle for Less.
Insist on the Best!**

HOMELINE  SQUARE D
PANELS & BREAKERS

**100 AMP MAIN
HOUSE SERVICE PANEL**

A Smart Choice for Homeowners & Business

Anniversary Special

- Remove Old/Obsolete Panel
- Install New Square D Panel
- All New Circuit Breakers
- Installation Labor
- **Includes Permit**



Based on typical location and conditions. Some installations may require additional materials and costs.

**ALL THIS
NOW \$969⁰⁰**

Valid to 12-15-16

**SAVE
OVER \$300**

Stay Snug with an *Impregnable Roof*

Getting a roof ready for winter ranges from inspecting for signs of wear to a full replacement if needed. Roofing professionals may perform a basic inspection at little or no charge to determine what is required to ensure your home will be snug and comfortable when winter makes its presence known.

Homeowners who need roofing work done have a short window of opportunity. Most roofing contractors are quite busy in October and November. Delaying until the first rain or snow can expose the home to more serious risks and less time to resolve problems, especially when roofers are handling other jobs and can't start your job for a few weeks or more.

Before engaging an inspector, most homeowners can handle some basic maintenance first. Note the pine needles and leaves that collect

in roof valleys. Allowing such debris to remain on the housetop will compromise strength and integrity of the roof, causing it to deteriorate.

If you are comfortable climbing a ladder, use a broom or blower to remove any debris you can reach comfortably without any safety risks. Remove leaves and pine needles that accumulate in rain gutters at the same time. In fact, gutters should be cleaned twice a year: in fall to remove autumn leaves, and in spring to remedy any winter damage.

After taking care of basic maintenance, do a visual inspection and make a note of everything you observe. Next, it's time to call a professional for a thorough inspection. Areas around vent pipes can admit water and should be evalu-

ROOF continued on page 20



Heavy snow loads and movement when snow melts can cause problems on your roof. Call in a professional when whether permits and get damaged shingles repaired or replaced.

24-Hour Resident Manager

OPEN DAILY 9-5

Don't Skip Kawell's

DART CANYON STORAGE

COMPARE OUR LOW RATES

LONG TERM PARKING AVAILABLE

Located in Crestline At Edelweiss

148 S. Dart Canyon Road 338-5124



John Simmons

(909) 336-2454

Cell: (909) 744-2747

P.O. Box 882 Twin Peaks, CA 92391

SimmonsRoofing@Excite.com

BONDED & INSURED

Roofing and Waterproofing

- NEW CONSTRUCTION
- REMODELS / REPAIRS
- SHAKE REPLACEMENT
- COMPOSITION
- TILE / METAL
- NATURAL SLATE
- SIMULATED SLATE



Superior Craftsmen of:

- ★ Docks,
- ★ Piers
- ★ Walkways
- ★ Gangplanks
- ★ Lake Weed Removal
- ★ Dock Houses
- ★ Canopies
- ★ Fences
- ★ Gates
- ★ Seawalls
- ★ Sunken Boat Retrieval
- ★ *And Much More!*

**Low Lake Level?
No Worries!**

Keep Your Dock Afloat
Move your dock out to deep water

★ **\$175⁰⁰** ★

(Some Restrictions Apply)

"Great work, fantastic price! They are the only company to use. They are DOCK PROS!" — George, Dock S2...

"Great attention to detail, Excellent workmanship! Very professional, Called back, Finished on time! Nice change!" — Mike, Dock N4...

"Great job on our steps. Turned out better than we imagined. Thanks guys!" — Tom, Dock PH...

**Let's Get
Ready for Winter!**

Sign up for our Winter Watch Program

Extension Stairs



New Piers



Fences & Gates



Access Stairs



New Docks



Dock Boxes



Email: aadockpros@aol.com 909-744-9664

Think *Snow!*

The Snow Valley team is getting ready for winter for skiers, snowboarders and snow play families. Over the summer, the team has been doing all the routine maintenance on their lifts and planning for the upcoming season. For example, five new snowmaking guns will be permanently mounted at the snow play area, and it will double their snowmaking capacity for snow. The snow play area is family friendly and sleds are provided free of charge.

In addition, Snow Valley has invested \$150,000 in its rental ski and snowboard equipment featuring improved features such as durability and efficiency. Snow Valley has also upgraded its Wi-Fi in the base area to better serve the skiers. "The Snow Valley Anytime Passes can be used at Mountain High Resort up to three times this season," said Kevin Somes, with holiday blackout days that apply. The 2016-17 season passes are on sale and can be purchased online at Snow-Valley.com.



ROOF continued from page 18

ated along with flashing that might have cracks and splits. Leaks also can develop around skylights.

Older roofs develop various problems based on age, normal wear and tear, and the materials originally used in construction. Roofing technology has improved in recent years. One example is the felt underlayment between the wood surface and the roofing materials. Newer underlayments resist moisture better and are stronger than their earlier counterparts.

Roofs over 10 years old should be inspected periodically, and those installed more than 20 years ago should be inspected every year in the fall without fail.

An unexpected problem that arises in winter might be damage to shingles when heavy snow loads slide to the ground. Another problem involves leaks caused when strong winds blow shingles away. If

either situation occurs, notify your roofing contractor immediately to have the damage repaired as soon as possible when weather permits.

Licensed roofing contractors are trained to make homes waterproof, from the buildup to the roofline. That's important on the mountain, because severe winter weather has caused many mountain homes to develop leaks over the years.

For help inspecting and gearing up your roof, check out the contractor before hiring. Be sure the roofer is licensed by the state, in good standing, bonded and has workers' compensation insurance. Bear in mind that if the contractor does not have workers' compensation insurance, the homeowner can be held liable for any injuries to workers and subcontractors.

John Simmons contributed to this article. Simmons Roofing can be reached at (909) 336-2454.

Working with AWAC

Every day in life we are faced with questions and answers, problems and solutions. It's not any different here at AWAC. We process hundreds of requests each year for painting, roofing, construction, fencing, tree trimming and removal and many other modifications. But, sometimes the answer to the request is No. Unfortunately, we live in a society where No is met with anger, indignation, excuses and sometimes all out meanness. AWAC never says NO without a reason and a solution to the problem. We want to work with you and find a comparable solution to issues which may arise.

Here are few examples:

A property owner wants to remove a very large seemingly healthy tree. They apply for a permit to remove the tree and AWAC says no; however, gives the property owner an option to obtain a report by a Certified Arborist regarding the health and safety of the tree. Although an Arborist report is not always required when it is, it is the responsibility of the property owner to obtain and pay for the report to be provided to AWAC. AWAC will then reevaluate the decision based on the information in the report.

A property owner wants to paint the house hot pink with purple trim and they apply for a permit to do so. The Committee says no; these colors are not in harmony with the surrounding area; however, the property owner is given the opportunity to submit an alternate color for review with no additional permit fee.

Sometimes individual wants or needs are not in accordance with the established CC&Rs or regulations and cannot be granted. Keep in mind that the area you live in, the area you fell in love with is the one we are protecting.

When considering modifications within Arrowhead Woods please read "A Guide for Owning Property in Arrowhead Woods" which includes guidelines for construction, and forest management and tree care. This publication is on line at www.awac.biz.

We look forward to working with you to meet your needs and wants while maintaining and preserving the character of the Arrowhead Woods.



**Arrowhead Woods
Architectural Committee**

(909) 336-2755 • www.awac.biz
P.O. Box 2026, Lake Arrowhead



If You Must Drive in Storms, *Be Careful*

Stay home! That's the best advice for handling winter driving conditions, especially during a storm.

Stock up on nonperishable foods and necessities in advance to eliminate the need to dash through the snow to the grocery store if you might be snowed in.

On the other hand, sometimes you must leave home: To drive to work, to take care of elder loved ones who live nearby, to go to a designated shelter if the power is out and you can't stay warm at home overnight. But for your safety and that of others, stay indoors during a storm.

Even if you are a good, experienced driver in snow, other drivers might be inexperienced,

nervous or fatigued. An incident might be the other guy's fault, but your best option is to avoid driving.

BEFORE DEPARTURE

Get proper rest before a long journey; don't drive while tired. Try to drive during the day. Avoid traveling alone. Another adult can keep you alert or take over driving if you get tired.

Keep a fully charged cell phone with you at all times.

Allow driving time plus at least 45 to 60 minutes extra during a storm. Road closures, heavy fog, icy patches and other situations will slow you down and cause delays.

Keep family or friends apprised of your destination, route



Plan to spend extra time scraping snow off all windows, plus sweeping off the roof and hood, before driving under winter conditions.

and arrival time. If you must detour from your established route, notify your contact person, who can arrange for help to be sent to you if your vehicle gets stuck.

Remove snow and ice from all windows and lights, roof and hood.

DURING THE DRIVE

Drive with headlights on during inclement weather. In addition to being a requirement by law, it helps avoid a collision with a driver who otherwise won't see you in time. This is especially true of white, gray or silver vehicles that blend in with the snow.

At the first opportunity, fill up your gas tank and refill as needed to ensure you don't run out.

NEED A LICENSED CONTRACTOR?

Call the Association of Building Contractors of the San Bernardino Mountains for your



FREE

2016

Membership Directory

(909) 337-6377

Check Our Website:
lakearrowhead-abc.com



Serving the Mountain Communities Since 1962

Will your floors be suffering
The Wintertime Blues?
Snow melt... Salt residue...
Sled scrapes... Mudslinging...
Holiday spillage...
And damage from
Frozen pipes or a Leaky roof?

**REDLANDS FLOORHOUSE
TO THE RESCUE!**
909.798.2644

36 Stuart Street, Redlands, CA 92374
A family tradition since 1938
Lic. #592931

A full tank will minimize condensation, providing maximum advantage in case of trouble.

Stay on main roads, avoiding back roads and shortcuts.

Delays are inevitable. Accept each circumstance with patience as it arises. Avoid anger, frustration and panic by being courteous to others. You never know which other drivers might have short tempers and road rage brewing.

Do not use cruise control if pavement is slippery and when rain, snow or ice are present.

Look and steer where you want to go. Distractions can cause you to steer off course.

Speed is the most significant factor while driving in snow. Going fast and stopping fast will get you in trouble. Slow down. Accelerate and decelerate slowly to maintain traction and avoid skids.

If possible, don't come to a complete stop. Slow down



Winter driving, especially in the mountains, demands extra preparation and careful driving techniques.

enough to keep rolling until the traffic light changes. Moving from a full stop is very different than proceeding from a slow roll.

Don't power up short hills. Get a little momentum before reaching the hill, and let a constant speed carry you up. Avoid stopping while going uphill because it's difficult to get moving again. At the crest, reduce speed and proceed slowly down the hill.

If you get stuck in a snow drift, put your gloves on and use the shovel that's in your trunk to create a pathway for getting out. Be sure to wear warm boots with a good tread while digging. Keeping feet warm and dry is imperative, especially because additional delays can arise. Don't be stranded in your car with wet feet.

FOG

Fog is usually a morning or evening occurrence. Try not to drive during those times (but getting to and from work can make this difficult to avoid). Know your

route well and be aware of which areas accumulate fog.

Allow greater distance between your vehicle and others. You need that distance if you must stop.

If you have fog lights, turn them on. Use only low beam lights—not high beams—in fog.

Be aware of outside temperatures because fog can freeze on contact with cold road surfaces, causing black ice.

Fog causes moisture to collect on the windshield. Adjust the defroster and windshield wipers for good visibility. Use the right edge of the road as a guide to avoid drifting toward oncoming traffic and to avert eyes from headlights.

Pull well off to the side of the road if you have no visibility. Turn hazard lights on to alert other drivers that you are stopped off the road.

Got Life?



FARMERS
INSURANCE

LIFE • BUSINESS • AUTO • BOAT • WORKERS COMP

Rita M. Price
909.337.2518
Blue Jay

Ca License #0544472

Eric E. Price
909.867.6462
Running Springs

Ca License #0E61299



Do it Best

Your Mountain Hardware Center

- ⊗ Hunting & Fishing
- ⊗ Home & Garden
- ⊗ Electrical
- ⊗ Tire Chains & Repair Parts
- ⊗ Hardware & Tools
- ⊗ Plumbing & Features
- ⊗ Paint Supplies

Open Daily 8 a.m. - 6 p.m.

909•337•3310
28946 Hook Creek Rd., Cedar Glen



I OFFER HOME INSURANCE OPTIONS

Around here, your choice is clear.

Everyone likes options. My office not only offers car insurance backed by a company with 80 years of experience, but also offers home insurance options from various unaffiliated companies, as well as North Light Specialty Insurance Company, a subsidiary of Allstate.



Danielle Self
909-267-3537
 9155 Archibald Ave., Ste. H
 Rancho Cucamonga
 danielleself2@allstate.com
 CA Insurance Agent #: OC55761



Allstate[®]
 You're in good hands.

Auto Home Life Retirement

Give Your Home a *Quick, Easy Facelift*

By Mike Harris

Mike Kemsy, who operates the Running Springs-based Lakeforest Siding, knows what's behind the colorful flyers that have appeared in recent issues of the *Mountain News*. He's lived locally for more than 30 years, works on the mountain and offers some deals that homeowners tired of painting may find hard to resist.

Lakeforest Siding is a siding and decking contractor especially serving the San Bernardino Mountains community including the towns of Lake Arrowhead, Crestline, Running Springs, Arrowbear, Green Valley Lake, Big Bear, Blue Jay and more. Lakeforest Siding also serves all of San Bernardino, Riverside and Orange counties.

Founded by Kemsy, Lakeside Siding has serviced customers in the greater San Bernardino mountain range since 1984. Kemsy has been in the home improvement business for over 40 years, starting his career working as part of a family business at 15 years of age. He is constantly modifying and improving product and trim installations to create unique signature installations and designs.

Lakeforest focuses on four main areas of construction: vinyl siding for the exterior walls; trim for the windows, doors and eaves; replacement windows and doors; and deck repair and replacement. All Lakeforest Siding crews have a minimum of 10 years of experience and each and every job site is supervised and inspected from start to completion.

Lakeforest Siding offers in writing a double labor guarantee. All homes are designed to meet

the maximum potential for energy efficiency and to increase value and visual enhancement. Each and every customer is guaranteed to receive the best products, installation, service, value and price. No one does it better for less, guaranteed.

Kemsy says customers find peace of mind from choosing the best company and product warranties in the industry. Serving the San Bernardino mountain region in Southern California for over 25 years, with more than a thousand satisfied customers and the list is still growing.

A typical job takes from seven to 10 days to complete, Kemsy says, and may also include vinyl shutters and trim, custom composite decks of Trex or Fiberon, fireproof fiberglass roofs and vinyl soffits and fascia.

Experience counts, Kemsy says. With decades of experience the company is dedicated to design and personalize your home to get that beautifully symmetrical design look, balancing your home with the finest manufactured products available: Mastic vinyl siding and trim products for the exterior of your home and "Simonton" windows and doors that offer more glass and less frame.

Kemsy says siding usually costs about two and a half

times the cost of a paint job, and it normally takes three to five years for siding to pay for itself.

"Remember, though, paint does not stop water leaks, woodpeckers, decomposing T1-11 siding, and adds no value or insulation," Kemsy says. "National studies report that siding returns 1.5 to two times the investment in increased value at time of installation and sale."

Kemsy says his company has thousands of referrals and he has never had a complaint about his company's work.

Lakeforest Siding offers dou-

ble labor warranty on all installations of vinyl siding, windows and doors, giving you that lasting assurance of an energy efficient home that will last for generations to come.

Kemsy says his price is guaranteed to beat any legitimate estimate for the installation of Mastic and Alside vinyl siding, James Hardie siding and natural wood and composite decking.

"We guarantee the best price, highest quality of materials, labor and service after the sale," he says. "No one can do it better or for less!"



Have You Had Your *Fireplace Inspected?*

Nolan Calkins Sweep's Luck Chimney Service

With cold temperatures and snow on the horizon, this is the most important time of the year to have your chimney inspected and cleaned by a licensed and certified fireplace company.

Creosote buildup from fireplace use can ignite and cause a flue or structure fire. According to the Chimney Safety Institute of America, more than \$200 million in damages occur each year due to unsafe fireplaces.

Did you know a major part of a professional fireplace company is fire prevention? Not only do they service and maintain your fireplace so it works efficiently, and per the manufacturer's instructions, they also look for

any red flags that could result in a chimney or home fire.

Fires can result from disconnected chimney pipes, missing spark screens or caps, a combustible material too close to your fireplace or stove, pipes with rusted holes in it, or from fireplaces or stoves that are not in-



Sweep's Luck gets up close and personal with every fireplace, inspecting it for any problems in addition to cleaning it.

stalled correctly. Just because you have not had a problem in the past does not mean you will not have a problem in the future.

You may be thinking, "I have been using this fireplace for 20 years and, if it was going catch my house on fire, it already would have." Most people who

have had a chimney fire will tell you, "I never had a problem until it happened."

The goal is to keep your fireplace serviced and maintained so you do not have a chimney fire. Once you have a chimney fire it is often too late to correct it. Remember, when you start a fire in your fireplace you are literally putting a fire inside your home.

The first big winter storm and holidays will be here before we know it, so plan ahead and, when the temperatures begin to drop, you can truly relax by the fire.

If you have any questions or would like a free inspection, give Sweep's Luck Chimney Service a call at (909) 337-0256 or visit www.sweepsluck.net.

HONEST | PROFESSIONAL | RELIABLE

Save up to **\$640**

Free Accessory
PROMOTION

September 16th – November 27th 2016

REGENCY
FIREPLACE PRODUCTS

FREE CERAMIC LOG SET



FREE BLOWER



FREE VENTING



FREE VENTING



Sweep's Luck[®]

A Sweep's Luck, Inc. Co.

Since 1982

Chimney • Dryer Vent • Air Duct Service

- Chimney Cleaning & Repair
- Dryer Vent Cleaning & Repair
- Air Duct Cleaning
- Fireplace Sales & Installations
- All Major and Minor Repairs



"Visit Our Showroom"

(909) 337-0256 | SweepsLuck.net

26882 State Hwy 189 | Blue Jay, California 92317



Plan Now for *Winter's Cold*

By Mike Harris

Fall means it's time to get ready for winter and it's also time to tackle that special indoor project that can get done whether it's raining or snowing outside.

"One of those fall projects to think about is adding heat into a room that needs it," said Scott D'Angelo, Rim Forest Lumber's general manager.

A typical room that might need a heating project would be a build-up area, an attic or a room you promised yourself to finish later.

"Or maybe you have a room that has heat but needs a little extra," he added.

Adding heat to a room is not that difficult if you're comfortable working with tools. D'Angelo said advice and tips on how to do the job—along with all the supplies you would need—is available at Rim Forest Lumber.

"Come on in and talk to us," he said.

Adding heat to a room can depend on whether your current heating ventilation and air conditioning (HVAC) system can accommodate another vent. If your HVAC system can't handle the demand, you may need to upgrade the system. But if your system can, installation is doable.

You may need to measure the square footage of your house to determine if your existing furnace has enough capacity to heat another room. The folks at Rim Forest Lumber can give you some ideas.

With HVAC, basically there are three types of air duct systems: sheet metal, insulated fiber duct and insulated flex duct.

Sheet metal has sharp edges,

and cutting with tin snips can add more edges so sheet metal should be handled carefully; use abrasion gloves and safety glasses, experts advise.

A lot of the work is simply adding an air take-off from an existing large branch or directly from a trunk or off the plenum. Bringing heat to a room is done using insulated fiber duct or insulated flex duct.

At the terminus you'll need something like a wye connection pipe on one end and a perimeter stack boot or register box on the other. You may need elbow piping for working around corners, but again Rim Forest Lumber's experts can help you.

Other get ready for winter ideas include making sure your garden hose is disconnected from the valve, and completely draining the hose to make sure there's no water inside to freeze and crack the hose.

A wintering checklist of things to do also can include some pretty simple steps, such as walking around your house to make sure leaves aren't piled up against the base of your house, or to see if dirt has built up against deck support posts.

Outdoor furniture should be stored away for next summer, or at least covered to protect it from ice and cold.

Check windows and exterior doors for proper weather stripping and, if it's cracked or worn, replace it with fresh.

"Are there attic vents that



MIKE HARRIS

Kevin Trapane, shed manager at Rim Forest Lumber in Rimforest, shows examples of two of the HVAC duct parts needed for bringing heat into an unfinished room—a wye connection pipe and a perimeter stack boot.

you opened for the summer that now need to be closed for winter?" asked D'Angelo. "If your water pipes have heating tapes wrapped around them, are they in good shape? While they tend to last a long time, they will fail eventually."

Replacing furnace air filters is another simple thing homeowners can do. Furnaces probably haven't been used since late spring, so dust and lint have had a chance to settle. Check your owner's manual for instructions.

Another good idea is to check for those items you don't want to go looking for when it's snowing outside.

"Now's the time to replace your outside burned out flood lights," said D'Angelo. "You don't want to try climbing up

a ladder to replace a light bulb when there's ice and snow on the ground."

Rim Forest Lumber has been seeing a surge in light bulb sales, he added.

"It's important also to have the usual things such as flashlights, lots of fresh batteries, and good old-fashioned matches," he said.

For mountain residents with irrigation systems, make sure the system has been drained. Any water remaining in the pipes will freeze, and homeowners may be looking at some unnecessary expenses.

Other items on your winter list include bringing out and inspecting snow removal equipment, from snow shovels to snow throwers.

Preparing for the *Cold Weather*

Sue Grove, San Bernardino Fireplace & Woodstove Specialties

This is a great time to get prepared for winter. All too soon the cold weather and the holidays will be here.

To help mountain residents prepare, San Bernardino Fireplace & Woodstove Specialties has added another manufacturer to their store. Travis Industries has three different brands: Avalon, Lopi and Xtrordinair.

"I am very pleased to add all three of their brands," said Jon Harman, manager. "We will have a wider range of products to assist our customers." Travis Industries is the largest privately owned wood, pellet and gas stove, insert or fireplace company in America. All of their products are manufactured in the United States. They

produce quality designs that have won awards.

More people are thinking about adding a natural gas fireplace, stove or insert to their home. Natural gas remains one of the most efficient, convenient, clean burning and economical fuel source. Gas fireplaces are the easiest to use with remotes or thermostats.

Direct vent fireplaces can be installed almost anywhere. They can vent directly out an outside wall and many do not need a hearth. The smaller fireplaces take up very little space. Direct vent means combustion air comes from outside the home through the pipe. No room air is used. This prevents any drafts coming from the fireplace.

Most direct vent stoves,

fireplace and inserts have a back-up battery so they operate in power outages. You can keep your living area heated during any storm. Direct vent inserts are also an excellent choice if you have a fireplace that is located where you spend most of your time. They are tested to the safety and efficiency of a wall heater. You can heat a large area while watching a beautiful flame. Direct vent gas stoves are excellent heaters and take very little space. They are two inches from the wall and only require a hearth under the legs. Gas stoves would be an excellent choice when the area requires something small.

San Bernardino Fireplace & Woodstove Specialties is ready to assist you with all your

fireplace needs. They have the largest showroom in the Inland Empire. The showroom is full of screens, tool sets and glass doors that complement the décor in your home. It is important to have a screen or glass door in good working order before you start the fire.

Harman recommends you come in with dimensions and pictures to help the staff better assist you. Before you come in, you can take a virtual tour of the store at sbfireplace.com. San Bernardino Fireplace & Woodstove Specialties is open from 9 a.m. to 5:30 p.m., Monday through Saturday. They are located at 2240 E. Highland Ave in San Bernardino off the 210 Freeway. Please drop by or call (909) 862-1330 for further assistance.



NEVER BE COLD AGAIN

The Best Gift of the Season is a Beautiful Wood, Pellet or Gas Appliance from

Avalon



Since 1914
San Bernardino Fireplace
 & WOODSTOVE Specialties

Mon. - Sat. - 9am to 5:30pm • Closed Sunday
 Serving the Inland Empire & the Mountains Since 1914

2240 East Highland Ave., San Bernardino
 210 Freeway at East Highland Ave.
 Off ramp, Between Sterling & Arden Aves.



Like us on Facebook
[facebook.com/sbfireplace](https://www.facebook.com/sbfireplace)

www.sbfireplace.com

(909) 862-1330



Cedar Glen Resale Boutique



Home Goods Store

Shop • Donate • Volunteer

Open Daily 11am – 6pm

(909) 336-3220

Cedar Glen Mall next to RB's Steakhouse Restaurant

All proceeds go to the
Boys & Girls Club of the Mountain Communities



Sponsored By

SUBARU of San Bernardino

Sales and Service Departments

(888) 457-8408

Donate To Us!

The Boys & Girls Club needs your old Furniture, working Appliances, Clothes, Jewelry, Cars, Boats, & Decoration items.

No Mattresses or broken T.V.s, etc.

Thank you for supporting the Boys and Girls Club of the Mountain Communities!

Get Your Boat and Dock Ready for Winter

By Mike Harris

Winter is right around the corner so now's the time to get your boat and dock ready for when winter storms and freezing temperatures finally arrive at Lake Arrowhead.

"All American Dock Pros' Winter Watch Service provides a sense of security to dock owners," said Aaron Lawler, owner of All American Dock Pros, speaking about his company's dock watch service. "All American Dock Pros' technicians are on the lake year-round watching over docks. They are looking for potential problems caused by the winter storms that blow through."

A dock watch program can be there when you're not, said Mike Scorziell, owner of MJS Dock Service.

"If your dock is already unhooked and we receive any rain or snow, or if there is high winds or rough water, your dock may shift or float away—damaging itself and the docks around it," Scorziell said. "People try to watch their own dock, but they find out they just can't do it. We will do that for you."

"Because of the ongoing drought, we just don't know if we're going to get a lot of rain or not," Scorziell said. "But I remember a few years ago when the lake came up 20 feet in a two-week period. And during the last drought when the lake level came back up, there were docks pinned under the water, staked to the ground."

Snow can be a serious factor because, if it builds up, it can weigh down your dock.

"If you have your boat on the lake in the winter, we have a special dock watch program where we will go out and remove snow on the

dock," Scorziell said.

Kiwi Docks at Lake Arrowhead also offers a winter dock watch program that can help owners keep their docks safe through the winter.

"When you join our Winter Dock Watch Program, you receive the piece of mind that our professional eyes are monitoring your dock, looking for problems and potential problems," according to Kiwi Docks. "We will periodically check on your dock throughout the winter months, especially after large storms. We will advise you if there are any problems that need attention at your dock, gangplank, or pier, and the cost of those repairs."

One of the main reasons for docks sustaining damage during storms is improper chain adjustment and missing cotter pins, Lawler said. "With our fully equipped barge on the lake year-round, All American Dock Pros is ready to tackle any problem that could arise. Another overlooked area is flotation. Fingers and main decks that are floating low today can easily become submerged under a snow load. This leads to wood rot and structural damage. Stain and paint do more than just look good; they also protect the wood and metal against the deteriorating forces of the elements.

"As the lake level lowers, docks can be beached," said All American Dock Pros' Lawler. "Floats that are meant to float are not meant to hold up on solid ground. They not designed to support that much dead weight."

Sometimes as the level drops hidden hazards are discovered.

"We sometimes find a dock

where there's a tree trunk under the dock," Lawler added. "If you don't move the dock that tree trunk could break the dock, so a dock owner needs to have someone watching it all winter long to protect their investment."

And if the winter turns out to be a relatively storm-free season, the issue for dock owners may be facing lake levels that just keep dropping.

"Now is the time to protect your investment against the ravages of the upcoming winter," according to Kiwi Docks. "As lake levels fluctuate, proper chain adjustment is crucial to the security of your dock. Multiple docks and docks with hard canopies are at an even greater risk."

Scorziell said his company is building aluminum docks with hard aluminum canopies, especially nice if people want to leave their boats on the lake year round. For keeping your boat on the lake during the winter, a boat lift and aluminum canopy

is a good combination, he added.

As part of its Winter Watch Service, All American Dock Pros will be checking regularly on the depth of the water under their customers' docks. Should they find that the depth under a dock is at a critical stage, All American Dock Pros' staff will try to notify the dock owner immediately and get authorization to move the dock as the situation warrants.

Lawler said there may be instances where pre-authorization is not possible.

"By signing up for our Winter Watch Service, the dock owner is giving All American Dock Pros authorization to move their dock at any time they feel it is necessary and giving their agreement to pay all expenses incurred to All American Dock Pros," he said. "By checking your dock on a regular basis, All American Dock Pros will find all small issues and correct them before a larger, more expensive, problem occurs."

Here's how I see it ...



**Tax Planning for next year
started April 16, so give your
Local Tax and Financial Experts
a call!**

909-337-9990

TRIPLE EDGE
FINANCIAL SERVICES
Serving: Individuals | Businesses | Corporations

LAKE ARROWHEAD
27307 Hwy 189, Ste. 103 | P.O. Box 2662 | CA 92352

REDLANDS | 710 Brookside Ave, Ste 3
RIVERSIDE OFFICE | 3890 Eleventh St, Ste 209

For All Your Home Improvement Needs



**Patrick
Brennan
Construction**

Specializing In:

All Your General Construction Needs

We Have the Insurance That Protects You! Worker's Compensation & Liability

Serving the Mountain Area for Over 30 Years

909.337.9460 • Fax 909.337.9519

P.O. Box 2304, Blue Jay, CA 92317 • Lic. #477283

We're here to make sure...

Nothing Stands Between You And Quality Health Care!



Landslides and road closures are a common threat to mountain residents. In the past, storms have made Highway 18 impassible. That's why, when you can't get there from here, it's good to know someone's got your back. MCH has the health care you need, when you need it most. Log on to MCHcares.com to learn more about the many services now available to you.



MOUNTAINS
COMMUNITY HOSPITAL
The Heart of Mountain Healthcare

MCHcares.com
(909) 336-3651

29101 Hospital Road
Lake Arrowhead, CA 92352

(909) 867-6341

31900 Hilltop Blvd.,
Running Springs, CA 92382



Upcoming Live Stage Plays and Musical Events

- Saturday, October 29th A Scary Weekend
 Saturday, November 5th Hwy 173 - Bands, Burgers & Brews!
 Friday, November 11th USO Tribute - A Salute to Our Troops
 Saturday, November 12th USO Tribute - A Salute to Our Troops
 Friday, November 18th The Rainmaker - Live Theater
 Saturday, November 19th The Rainmaker - Live Theater
 Saturday, November 26th American Parlor Songbook - Radio Production
 Saturday, December 3rd Thug Tunnel - Live Theater
 Thursday, December 15th American Parlor Songbook - Radio Production
 Friday, December 16th A Christmas Carol - Live Theater
 Saturday, December 17th A Christmas Carol - Live Theater
 Friday, December 23rd A Christmas Carol - Live Theater
 Saturday, December 24th A Christmas Carol - Live Theater
 Saturday, December 31st New Years Eve Diner & Dancing (6 pm 'til 1 am)

"The Best Night in Town!"

THE TUDOR HOUSE



Tudor Ville Friday Night Supper Club

**Steve Lawless for
Your Dining Pleasure 5:30-8:00
David Arellano & Fly Away 8:00-10:00**



Tudor Ville

Farmers Market & Art Affaire
Every Sunday, 9:00 to 2:00



Tudor House Champagne Brunch

Every Sunday, 9:00 to 2:00

**Featuring Continuous Live Music
by David Arellano**

**Ask
About
Our...**

Family and Group Private Events

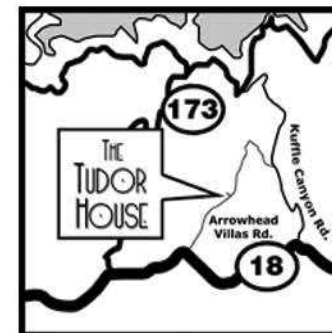
Holiday Family and Business Parties
 Wedding and Group Celebrations
 Family and Class Reunions



BANDS, BURGERS & BREWS!

Every Wednesday! Doors Open: 5:30 pm Close: Whenever!

800 Arrowhead Villa Road, Lake Arrowhead, CA • (909) 336-5000 ext. 1
 Visit our website for details: www.TudorHouseEntertainment.com





**2016 - 2017
Season Passes
On Sale!**

Passes valid for the rest of this season and all of the 2016–2017 season



**Two
Great
Ways to
Save!**

Anytime Pass**

**Anytime Season
Pass Type:**

Purchase Dates:

	June 1 - Dec. 6	Dec. 7 - Jan. 31
Adult (ages 22-64)	\$299.00	\$399.00
Young Adult (ages 13-21)	\$279.00	\$339.00
Senior (ages 65-69)	\$279.00	\$339.00
Child (ages 7-12)	\$189.00	\$209.00
Super Senior (ages 70+)	\$25.00	\$25.00
Family Add-on* *	\$159.00	\$169.00
Children 6 & under**	\$25.00	\$25.00

**With the purchase of an Adult or Teen Anytime Pass, a child (ages 7-12) may be added.

**With the purchase of an Adult or Teen Anytime Pass.

*** Anytime
Passes are
valid Anytime
throughout
the Season.**

Midweek Pass**

**Midweek Season
Pass Type:**

Purchase Dates:

	June 1 - Dec. 6	Dec. 7 - Jan. 31
Adult (ages 22-64)	\$219.00	\$229.00
Young Adult (ages 13-21)	\$209.00	\$219.00
Senior (ages 65-69)	\$209.00	\$219.00
Child (ages 7-12)	\$159.00	\$169.00
Super Senior (ages 70+)	\$25.00	\$25.00
Family Add-on* *	\$129.00	\$139.00
Children 6 & under**	\$25.00	\$25.00

**With the purchase of an Adult or Teen Anytime Pass, a child (ages 7-12) may be added.

**With the purchase of an Adult or Teen Anytime Pass.

*** Midweek
passes are only
valid Midweek.
Not valid
during Holiday
periods.**

Passes Valid for skiing, snowboarding and snow play!

We invite passholders from 2013-2014, 2014-2015 and 2015-2016 to enjoy our renewal rates.

(800) 680-SNOW • www.Snow-Valley.com