

Mammoth Cave Fun

Kentucky's Cave Country



- Diamond Caverns
- Plaza Theatre
- Kentucky Stonehenge
- Cycling • Hiking
- Nolin Lake State Park
- Ziplining • Rappelling
- Museums • Antique Shops
- Canoeing • Horseback Riding



Caveland Marketing Association

CMA

Kentucky
UNBRIDLED SPIRIT

Designed by Adman Marketing • 502.456.1300

www.mammothcavefun.com

Mammoth Cave Fun

Kentucky's Cave Country



MAMMOTH CAVE NATIONAL PARK
A World Heritage Site
National Biosphere Reserve

- Mammoth Cave National Park
- Kentucky Down Under Adventure Zoo
- Dinosaur World
- Barren River Lake State Park
- Hidden River Cave, Zip & Rappel
- Kentucky Action Park

www.mammothcavefun.com

WELCOME

to Kentucky's Cave Country

Within a one-day drive of
75% of the US population!



Welcome to Kentucky's Cave Country where below our beautiful rolling landscape lies the world's longest cave system to explore. Above ground you'll find your adventure—hiking, biking, canoeing, fishing, zip lining, rappelling, horseback riding, antiques, and historical sites.



Of course, you'll want to visit Mammoth Cave National Park and our beautiful privately-owned "show caves". We also have two of Kentucky's finest state parks—Barren River Lake State Resort Park and Nolin Lake State Park.



So venture off the interstate, take a drive through our countryside, visit a small town, stay at one of our B&Bs, campgrounds, or chain hotels. Try some local home cooking, fine dining, or Kentucky BBQ. Stop by a local shop, country store, or roadside market. Enjoy a local festival. Explore our Kentucky!



We're here to help you plan your trip.

Cave City Tourist & Convention Commission
270.773.3131 / www.cavecity.com

Edmonson County Tourism Commission
270.597.2222 / www.cavesandlake.com

Glasgow-Barren County Tourist & Convention Commission
270.651.3161 / www.visitglasgowbarren.com

Horse Cave/Hart County Tourist Commission
I-65 TOURIST INFORMATION CENTER
270.218.0356 / www.kygetaway.com

Mammoth Cave Area Welcome Center
270.773.8833 / www.cavecity.com

Mammoth Cave National Park
270.758.2180 / www.nps.gov/mac

Munfordville Welcome Center
270.524.4752 / www.visitmunfordville.com



Mammoth Cave National Park

A World Heritage Site and International Biosphere Reserve

Picture yourself at Mammoth Cave National Park, the longest cave system in the world! Go to www.nps.gov/mac to choose the ranger-led tour that suits you best. Difficulty levels range from easy to strenuous.

There's even a new tour for those with accessibility needs! Reservations are suggested.

The mysteries of the underworld beckon, but that's not all ... in addition to the many cave tours, you can hike, bike, ride your horse, canoe and kayak, enjoy a campfire program, and more.

Open daily year-round except Christmas Day.

1 Mammoth Cave Parkway
Mammoth Cave, KY 42259

Information/Reservations: nps.gov/mac
Cave Tour Information: 270.758.2180
Cave Tours/Reservations: 877.444.6777

www.mammothcavefun.com

Cave City • I-65, Exit 53

DINOSAUR WORLD: More than 150 life-size dinosaurs in an outdoor museum setting. Fossil dig, indoor Prehistoric Museum, unearth a life-size dinosaur in the Boneyard, Mammoth Gardens, Movie Cave, and picnic area, playground, and more. 711 Mammoth Cave Rd. 270-773-4345 dinosaurworld.com

KENTUCKY ACTION PARK: Longest twin zipline in Kentucky. Scenic chair lift climbs over 2,000 feet to top of a mountain. Ride down exciting ¼ mile Alpine Slide. Olde time photos, 18-hole Western-themed miniature golf. 3057 Mammoth Cave Rd. 270-773-2560 kentuckyactionpark.com

MAMMOTH CAVE ADVENTURES: Treetop zipline tours along the edge of Mammoth Cave National Park. Horseback riding, super swing, and 70 foot drop tower. 1994 Roy Hunter Rd. 270-773-6087 mammothcave-adventures.com

MAMMOTH CAVE WILDLIFE MUSEUM: Rustic cave-like atmosphere filled with Beautiful, exotic animals and birds from around the world. An amazing, educational experience for the entire family. 409 East Happy Valley St. 270-773-2255

OUTLAW CAVE: Beautiful stalactites, stalagmites and other breathtaking formations on this 45-minute non-strenuous guided tour. It has been said that famous outlaws like Jesse James hid out in area caves. Only Handicap-accessible. 3507 Mammoth Cave Rd. 270-773-2560 kentuckyactionpark.com

ONYX CAVE: Wide variety of onyx formation along easy walking trails. Tours available Mar – Dec. 101 Huckleberry Knob Rd. 270-773-3530

JESSE JAMES RIDING STABLES: Guided trail rides over 500 acres where Jesse James and his gang once rode. 3057 Mammoth Cave Rd. 270-773-2560 kentuckyactionpark.com

RAVEN'S CROSS HAUNTED VILLAGE: The year is 1349. Ghosts and haunts roam after the black death destroys the village. Seasonal. 901 Mammoth Cave Rd. 270-579-7343

YOGI BEAR'S WATER ZONE FUN AT JELLYSTONE PARK™: Coming summer 2017, Karst Beach! 2-acre swimming pond with an inflatable obstacle course, 2 wet willie slides and a beach. 1002 Mammoth Cave Rd. 270-773-3840 jellystonemammothcave.com

HEIRLOOM TRAIL: 125 vendors and 50,000 square feet of shopping in a unique retro destination for the ultimate experience in re-cycling, upcycling and green shopping; antiques, consignments, repurposed items and handmade crafts. Go to www.cavecity.com for brochure download.

CAVE COUNTRY GO-CARTS: Includes game room, bumper cars and mini roller coaster. Seasonal. 820 Sanders St. 270-773-2299

CAVE CITY INFORMATION, HISTORY CENTER & GIFT SHOP: 418 Mammoth Cave St. 270-773-8833

CAVE CITY
Kentucky

HOME OF
MAMMOTH CAVE NATIONAL PARK

ZIPLINE
CAPITAL OF KENTUCKY!

CAVE
CAPITAL OF KENTUCKY!

EXIT 53, I-65

CAVE CITY TOURISM & WELCOME CENTER
418 MAMMOTH CAVE ST. • CAVE CITY, KY 42127
270.773.8833 • CAVECITY.COM

Kentucky
UNBROKEN SPIRIT

65 Exit 53, 4 miles on right
856 Old Mammoth Cave Rd.
Cave City, KY 42127
Phone: (270) 773-5552

Cave country canoe

Canoe and kayak rental/livery ■ Day and overnight paddles
Beginner to experienced ■ Family and pet friendly ■ Scenic Green and Nolin Rivers
Licensed to operate in Mammoth Cave National Park

Cave Area Attractions



**MAMMOTH CAVE
YOGI BEAR'S
JELLYSTONE PARK™
FUN FOR THE ENTIRE FAMILY!**

Only 3 Miles to Mammoth Cave Entrance
200+ RV & Camping Sites • 90+ Cabins • Free WiFi
Waterslide • 2 Pools • Splash Pad • Jumping Pillow
Splash Beach coming in 2017



Where You Camp With Friends!®
www.jellystonemammothcave.com
1-800-523-1854

YOGI BEAR and all related characters and elements © & TM Hanna-Barbera. (s17)



819 Sanders St. • Cave City, KY 42127
270-773-3335
www.comfortinn.com/ky165



100% Smoke Free • Complimentary Hot Breakfast • Indoor Pool & Fitness Center



801 Mammoth Cave St. • Cave City, KY 42127
270-773-2030
www.sleepinn.com/ky088



100% Smoke Free • Complimentary Hot Breakfast • Indoor Pool & Fitness Center

Glasgow's newest & finest
lodging establishment



208 Wall St. • Glasgow, KY 42141
270-629-2900
www.hiexpress.com/glasgowky



100% Smoke Free • Complimentary Hot Breakfast • Indoor Pool & Fitness Center

KENTUCKY ACTION PARK

INTERSTATE 65 JESSE JAMES Riding Stables EXIT 53



HORSEBACK RIDING



1/4 MILE ALPINE SLIDE



LONGEST TWIN ZIPLINE
IN KENTUCKY



OUTLAW CAVE



18 HOLE MINI GOLF

Cabins - Climbing Wall - Trampoline Thing - Go-Carts
Bumper Boats - Bumper Cars - Chair Lift - Old Time Photos
Cave City • 800-798-0560 • 270-773-2560
www.kentuckyactionpark.com

Green River Canoeing

Paddle through Mammoth Cave National Park on scenic Green River or Nolin River. See majestic limestone cliffs, numerous springs and pristine forestland with abundant wildlife. The rivers are suitable for all levels of canoeists. No scouting or portages are required.



3057 Mammoth Cave Road
Cave City, KY 42127
(270) 773-5712
(270) 590-5335
Exit 53 from I-65

OLDEST CANOE LIVERY OPERATING IN MAMMOTH CAVE NATIONAL PARK
www.mammothcavecanoe.com

www.mammothcavefun.com

270-773-8833

Cave Area Attractions



SAVE \$1 PER PERSON MCF17
(Valid for up to 6 people)
Not valid with any other coupons,
discounts, or offers.
711 Mammoth Cave Rd Cave City, Kentucky 42127

Mammoth Cave Adventures

7 Line Canopy Adult & Kids
Zipline Tours . Horseback Rides
Giant Swing . Drop Tower
270-773-6087
www.mammothcave-adventures.com

WINNER
CERTIFICATE OF EXCELLENCE
Voted #1 attraction in Mammoth Cave Area
tripadvisor

Mammoth Cave Canoe & Kayak

See Mammoth Cave National Park
from the scenic Green River.

"Will not be undersold"
270-773-3366

www.mammothcavecanoe-k.com

MAMMOTH CAVE WILDLIFE MUSEUM

12,000 Square Feet to Explore
Over 1,600 Specimens of Wildlife!
409 Happy Valley Street
Cave City, KY 42127
270-773-2255

ONYX CAVE

ACROSS FROM DINOSAUR WORLD

Unique Cave Coral Formations
60 Degrees Year Round
93 Huckleberry Knob Road
Cave City, KY 42127
270-773-2323

Cave Country RV Campground

Big Rig Pull Thru Sites • Open Year Round

Cable TV • Propane • Fitness Room • WiFi
270-773-4678 • 216 Gaunce Dr. • Cave City, KY 42127
www.CaveCountryRV.com

The Narrow Way Bed & Breakfast

FULL COUNTRY BREAKFAST
1 MILE FROM BARREN RIVER LAKE
FISHERMEN WELCOME, WI-FI
270-646-2957
www.thenarrowwaybb.com

Diamond Caverns RV Resort & Golf Club

18 Hole Golf Course ~ RV Park ~ Condos
654 Doyle Road, Park City, KY 42160
At I-65 Exit 48 toward Mammoth Cave
270-749-2891
www.diamondcavernsgolf.com

Grand Victorian Inn

5 Old Dixie Highway
Park City, KY 42160
270-590-1935

Glasgow/Barren County • I-65, Exits 36, 43 & 53

BARREN RIVER LAKE: A 10,500-acre lake popular for fishing, boating and water fun. Offers a lodge, cottages, campgrounds, tennis, 18-hole golf course, pools, beach, marinas, boat rentals, riding stable, picnic areas, shelters, and trails. 1149 State Park Rd., Lucas, KY. 270-646-2151 <http://parks.ky.gov/parks/resortparks/barren-river/>

SOUTH CENTRAL KENTUCKY CULTURAL CENTER: Housed in historic 1928 Kentucky Pants Factory. Explore the heritage of the region, historic exhibits and genealogical library. This attraction formerly called the Museum of the Barrens tells the story of the Barrens. Barren County was named by early settlers who came through the northeast side of the county in the 1790's and found few trees and little greenery. Believing the land was barren, the county was given that name. In reality, Indians had cleared the land for easy hunting. 200 W. Water Street, Glasgow. 270-651-9792 www.kyculturalcenter.org

HISTORIC PLAZA THEATRE: A 1930s movie theatre restored to its original beauty. With stars twinkling overhead, the Plaza hosts cultural events-live concerts, plays, dance, movies and more. Top artists playing live at the Plaza Theatre include Chris Stapleton, Black Stone Cherry, Charlie Daniels, Kansas, The Tannahill Weavers, Blackberry Smoke, Greg Martin Band, Kentucky Headhunters, Loretta Lynn, The Steel Drivers, Randy Travis, and John Conlee, to name a few. 113 E. Main Street, Glasgow. Visit www.plaza.org or call 270-361-2101 for tickets and/or information.

FORT WILLIAMS: A Union fort built in spring 1863 to ward off attacks by Confederate General John Hunt Morgan. Confederate forces overtook the fort in October 1863. Located at rear of Glasgow Municipal Cemetery. 270-651-3161 www.trailsrus.com/morgan/glasgow.html

BRIGADOON STATE NATURE PRESERVE: Named for a mythical Scottish village that appears from the mist every hundred years, the unique character of this preserve makes it special. Hike through a mature forest, scenic ravines and observe more than 120 species of birds. Hiking and photography allowed. 270-651-3161 <http://naturepreserves.ky.gov>

RALPHIE'S FUN CENTER: Year-round fun. Bowling, Laser Tag, Black Light Mini-Golf, Cannon Blaster, Roller Skating, Time Freak, Inflatables, Arcade & Concessions. Hosts parties and events with three party rooms and a banquet room. 702 Happy Valley Road, Glasgow. 270-629-4263 www.ralphiesfuncenter.com

KENNY'S FARMHOUSE CHEESE: See artisanal cheeses being made at the Mattingly dairy farm and taste a delicious sample of homemade cheese. 2033 Thomerson Park Road, Austin, KY. 888-571-4029 www.kennyscheese.com

DIAMOND CAVERNS: Offering cave tours for over 150 years. Features intricate drapery deposits lining the walls in cascades of naturally colorful calcite with thousands of stalactites, stalagmites and flowstone deposits. Safe trails with knowledgeable guides. Open year-round. 1900 Mammoth Cave Parkway, Park City, KY. 270-749-2233 www.diamondcaverns.com



Experience ...
unmatched adventure and
soul-renewing relaxation –
where you least expect it.



- Historic Plaza Theatre
- Museum of the Barrens
- Fort Williams
- Veterans Wall of Honor
- Brigadoon State Nature Preserve
- Barren River Lake
- Mammoth Cave National Park
- Diamond Caverns

GLASGOW 1-800-264-3161
Barren County Tourist Commission
A little bit of Scotland in Kentucky
Kentucky
Kentucky's Official State Logo

WWW.VISITGLASGOWBARREN.COM





Cave Area Attractions

HISTORIC DIAMOND CAVERNS

DISCOVERED 1859 - REDISCOVERED DAILY!



Explore the natural beauty and fascinating history of this remarkable underground treasure with your family during the hour-long guided tour. Open year-round. One mile off  at .

PRESENT THIS AD TO RECEIVE YOUR FAMILY DISCOUNT

\$1.00 OFF

Adult or Child Admission.
Good for up to 6 persons.
Not valid with other offers.

(270) 749-2233 diamondcaverns.com

Ralphie's Fun Center
Parties
Roller Skating
Cyberquest
Laser Tag
Bowling
Inflatables
Blacklight Mini Golf
Arcade
Food Billiards

South Central Kentucky's Entertainment Center

702 Happy Valley Rd.
Glasgow, KY 42141
270.629.GAME (4263)

www.ralphiesfuncenter.com
info@ralphiesfuncenter.com

South Central Kentucky Cultural Center



SOUTH CENTRAL KENTUCKY CULTURAL CENTER

MUSEUM & BARRIS

200 West Water St. • Glasgow, KY 42141 • 270-651-9792
Hours: Monday-Friday 9am-4pm, Saturday 9am-2pm
www.kyculturalcenter.org



PLAZA THEATRE
Making Memories since 1934

115 East Main Street • Glasgow, KY 42141
270-361-2101 • www.plaza.org

Events Sampler

JANUARY

Sandhill Crane Watch Barren River Lake State Park 270-646-2151

FEBRUARY

Buffalo Night (in restaurant) Barren River Lake State Park 270-646-2151

APRIL

Cub Run Days Cub Run 270-537-4895

Cherry Blossom Colorful Run Munfordville 270-524-4752

MAY

Citywide Yard Sale Munfordville 270-524-4752

Woodson House Garden Festival Munfordville 270-531-2354

JUNE

Glasgow Highland Games Barren River Lake State Park 270-651-3141

400 Mile Sale (4 days) Along Hwy. 68-80 across KY 270-781-6858

Barren County Ag. Festival Barren County High, Glasgow 270-651-3161

Saddle Club Horse Show Brownsville 270-597-3429

Glasgow Community Band Concert Downtown Glasgow 270-651-3161

Family Fest Nolin Lake 270-272-8003

Freedom Festival & Fireworks Chalybeate Park 270-597-2222

JULY

Annual Holiday
Concert on the Square Downtown Glasgow 800-264-3161

Fireworks, July 3 Jellystone Park, Cave City 270-773-3840

Fireworks Extravaganza, July 4 Barren River Lake State Park 270-646-2151

July 4 Homecoming Bonnieville 270-531-3212

Barren County Fair Fairgrounds, Temple Hill 270-270-0024

Hart County Fair Munfordville 270-524-4752

Summer Splash/Houseboat Hop Nolin Lake 270-272-8003

AUGUST

Nolin Fest Nolin Lake 270-272-8003

Poker Run on the Lake,
1st Saturday Barren River Lake 270-646-2055

SEPTEMBER

Edmonson County Fair Brownsville 270-597-2222

Cave City Proud Day Downtown Cave City 270-773-5191

Global Fest in the Barrens Downtown Glasgow 270-651-7905

Glasgow B&PW Arts, Crafts,
& Gifts Fair Downtown Glasgow 800-264-3161

Hart County Civil War Days Munfordville 270-524-4752

SEPTEMBER (continued)

Horse Cave Heritage Festival Horse Cave 270-218-0386

Hill of Terror Bonnieville 270-774-1333

OCTOBER

Corn Maze & Haunted Forest Jellystone Park, Cave City 270-773-3840

Roller Coaster Yard Sale Along Highway 63 270-651-3161

Big Buffalo Crossing BBQ Cook-Off Downtown Munfordville 270-524-4752

Hill of Terror Bonnieville 270-774-1333

Cruise Into Fall Car Show
2nd Saturday Downtown Glasgow 270-651-7255

NOVEMBER

Light Up Glasgow,
Fri. after Thanksgiving Downtown Glasgow 270-651-3161

DECEMBER

Nighttime Christmas Parade,
1st Saturday Glasgow 270-651-3161

Nighttime Christmas Parade,
2nd Saturday Cave City 270-773-5191

Christmas Parades,
1st Saturday Horse Cave & Munfordville 270-524-4752

Big Mike's Rock Shop

Home of Big Mo



Amethyst
Book Ends ■ Fossils
Chess Sets ■ Crystals
Gem Trees ■ Geodes

Come See
Mystery House



Big Mo

Cave City • Exit 53 • 270-773-5144

Located 1 mile from Mammoth Cave National Park

Cave Country Kentucky VACATION MAP



www.mammothcavefun.com

270-773-8833

Edmonson County • I-65, Exits 38 & 48

ROCKCASTLE SHOOTING CENTER: The ultimate shooting destination resort in the US. Located on 2,000 acres, the Center offers a sporting clay course, rifle ranges, pistol ranges, one 20 3-D archery course, and a Cowboy Action shooting town. Hosts a variety of local, regional, national, and international shooting competitions. Offers a wide variety of classes year-round. Shooting calendar of events on web site. 585 Park Mammoth Rd., Park City. 270-749-4101 rockcastleshootingcenter.com

CAVE VALLEY WINERY: Established in the spring of 2011, our winery is the newest addition to Park Mammoth Resort. We have a two acre vineyard with Diamond and Chambourcin grapes that make a beautiful setting for outdoor weddings. Our tasting room features an assortment of award winning Ky wines. Whether you prefer dry or sweet - we have something for everyone. 585 Park Mammoth Rd. Park City. 270-749-4101 Facebook: Cave Valley Winery

NOLIN LAKE: Nestled in the scenic hills of Cave Country, spans 5,800 acres of crystal clear water. Facilities on the lake include wave runners, ski, pontoon and fishing boat rentals. Cottages, bed and breakfasts, a state park, as well as camping and picnic sites are available near the lake. In-season catches include smallmouth and largemouth bass, crappie, bluegill, walleye and catfish. Great festivals on event schedule at www.friendsofnolin.org. 270-286-4240 parks.ky.gov

DOUBLE J STABLES & HORSEMAN'S CAMP: Located at Mammoth Cave Trail head. Over Yonder' Event Room Rental. Bunk Room Rental in Barn. Expansive Calendar of Events. 542 Lincoln School Road, Mammoth Cave. 270-286-8167 doublejstables.com

MAMMOTH CAVE NATIONAL PARK: The world's longest cave systems celebrated its 75th anniversary as a national park in 2016. It is also a World Heritage Site and International Biosphere Reserve. Cave tours, above ground trails, campground, hotel, expanded gift shops, restaurant with new expanded menu. 270-758-2180 www.nps.gov/macac

MOUTARDIER MARINA: Camping, boat rentals, cabins on Nolin Lake. 270-286-4069 moutardiermarina.com

MAMMOTH CAVE HORSE CAMP: Camp with your horse. New facility with 50-stall horse barn. Bunk Room Rental. Expansive Calendar of Events. 2578 Ollie Rd., Mammoth Cave. 888-682-3958 mammothcavehorsecamp.com



Scenic hilltop home known for clean, comfortable accommodations, great food and hospitality.

Conveniently located just minutes from Mammoth Cave National Park Visitor Center and Diamond Caverns.

3600 Mammoth Cave Road • Brownsville, Kentucky 42210

(270) 597-9647 • www.serenityhillbedandbreakfast.com

3 Course Gourmet Breakfast • Private Baths • Wi-Fi



Park Mammoth Resort offers:

- Lodging
- Restaurant
- Shooting Sports
- Convention Center
- Golf
- Banquets
- Winery

Just minutes from Mammoth Cave National Park. Open year-round.



270-749-4101 or visit: www.parkmammothresort.us

Horse Cave/Hart County • I-65, Exit 58

KENTUCKY DOWN UNDER ADVENTURE ZOO/ MAMMOTH ONYX CAVE:

One of Kentucky's most unique family-friendly adventure parks where you can have interactive encounters with animals from Australia, Kentucky and around the world. Pet a kangaroo. Feed rainbow lorikeets. Watch sheep herding. Enjoy the horse-drawn wagon rides and bird show. Meet a rare white bison. Included in your admission price is a lantern tour of Mammoth Onyx Cave, one of the region's most beautiful caves. Now open year round. 3700 L&N Turnpike, Horse Cave 270-786-1010 www.kdu.com

HIDDEN RIVER CAVE, ZIP AND RAPPEL/AMERICAN CAVE MUSEUM:

Located right on Main Street in downtown Horse Cave and featured on the Discovery Channel's Dirty Job Series, this cave offers 45-minute guided tours along a subterranean river as well as optional off-trail Wild Cave Tours. Zipline across or rappel down the limestone face of the region's largest cave entrance. The American Cave museum's exhibits are a showcase of underground and natural history: bats, blind fish, cave animals, prehistoric and modern cave explorers, saltpeter mining, groundwater science and cave geology and more! Package deals available. Open year round. 119 E. Main St., Horse Cave 270-786-1466 www.hiddenrivercave.com

HORSE CAVE STORIES CELL PHONE TOUR: This award-winning tour traces the pathway of Hidden River Cave beneath your feet in downtown Horse Cave's National Register Historic District, telling stories of how a town developed on top of a cave. 270-854-3054 www.horsecavestories.com

JAMMIN' ON THE PORCH: Bluegrass Jam Session on Thursday nights at The Bookstore in downtown Horse Cave. Public jam sessions are free. Bring your acoustical instrument and join in or come by and enjoy the music! 6:00 pm - 9:00 pm CT every Thursday. Free. 111 Water St. 270-218-0386

DENNISON'S ROADSIDE MARKET: Seasonal flowers and plants, fruits and vegetables, jams and jellies, Amish baskets, locally made crafts, Chaney's Ice Cream, Penn's Country Hams. Pick your own berries and pumpkins in season. Autumn activities. Open daily April 1 through December 31. 5824 S. Jackson Hwy., Horse Cave 270-786-1663

HORSE CAVE CULTURAL DISTRICT: Check out the shops in this tiny town's National Register of Historic Places Commercial District - The Bookstore, Sims Studio & Art Shop, A Walk Through Time Antiques & Collectibles, Heart of Yoga Studio, American Cave Museum Gift Shop, Feed Shed Café and Turtlelini's Pizza & Pasta.

HART COUNTY BARN QUILT TRAIL: In the tradition of quilt trails throughout rural America, the artistry of the traditional quilts has been displayed on backdrops of historic barns and buildings in Hart County. Go to www.kygetaway.com to download a trail map.



Getaway...

crawlaway

canoeaway

smileaway

jamaway

hideaway

rappelaway

zipaway

Kentucky
UNIVERSITY OF SPANISH

Hart County
TOURISM

www.kygetaway.com 270-218-0386

Cave Area Attractions



**KENTUCKY
DOWN UNDER
ADVENTURE ZOO
MAMMOTH
ONYX CAVE**



Visit One of Kentucky's most unique family-friendly adventure parks!

EXIT 58

NOW OPEN YEAR ROUND!



- Interactive Animal Encounters
 - Feed Rainbow Lorikeets
 - Sheep Herding
 - Animal Shows
 - Miniature Farm
 - Horse-drawn Wagon Rides
 - Bird Shows - Exotic and Birds of Prey
- Pet a Kangaroo!



**KENTUCKY DOWN UNDER ADVENTURE ZOO
MAMMOTH ONYX CAVE**

3700 L&N Turnpike Rd. • P.O. Box 10 • Horse Cave, KY 42749
270-786-1010 • info@kentuckydownunder.com • Central Time Zone



www.kentuckydownunder.com

HIDDEN RIVER CAVE

**ZIP
CAVE
AND
RAPPEL**

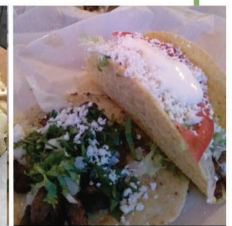
**\$5 OFF
ANY COMBO PASS
OR
\$2 OFF
PUBLIC CAVE
TOUR ONLY**

ASK ABOUT OUR CAVE ADVENTURE TOURS!

AMERICAN CAVE MUSEUM AND HIDDEN RIVER CAVE
OFF I-65 AT EXIT 58 IN DOWNTOWN HORSE CAVE
(270) 786-1466 | HIDDENRIVERCAVE.COM

NOT VALID WITH ANY OTHER PROMOTION OR DISCOUNT. DOES NOT APPLY TO CAVE ADVENTURE TOUR.

CMAYK



Hungry? We've got that covered.
Southern BBQ, homemade desserts,
country ham, delicious home cooking,
pizza, Mexican, and familiar chains.

www.mammothcavefun.com



www.mammothcavefun.com

270-773-8833

Munfordville • I-65, Exit 65

HART COUNTY HISTORICAL MUSEUM: Exhibits and collections of historical artifacts and records on Main St. 109 Main St. Monday – Friday 9 am-4 pm, Saturday 8 am-4 pm. Our Genealogical library is located at 113 Main St. 270-524-0101 hartcountymuseum.org

KENTUCKY STONEHENGE: See a bit of ancient society set up to reflect the points on a compass rose with additional rocks making the cardinal directions. Other rock displays include Earth Mysteries, the Garden of Gethsemane, Rock Gardens, Rock Park. Free dawn to dusk. 201 Lyn Ave. 270-524-4752 www.kystonehenge.com

MUNFORDVILLE WELCOME CENTER AND GIFT SHOP: Sample southern hospitality at the Welcome Center, in the restored turn-of-the-century Houk Drugstore Building at the corner of Main and South streets. Friendly and helpful staff, tourist information, shop for gifts and souvenirs. Open Monday – Friday 8 am-4 pm 113 Main St. 270-524-4752 www.visitmunfordville.com

MUNFORDVILLE CELL PHONE TOUR MEMORIES & MYTHS: Take a stroll around scenic Munfordville while listening to stories about this small town. Locals tell their stories and Civil War stories as you enjoy the beauty of the Civil War era homes and church. Start at the Welcome Center where you can get your guide for the tour. 113 Main St. 270-524-4752 www.munfordvillestories.com

THELMA STOVALL GREEN RIVER PARK AND ARBORETUM: Green River is one of the most biologically diverse rivers in North America. This historic site features an arboretum of native trees and plants, with interpretive exhibits and educational displays. Covered picnic pavilions, a children's playground, and primitive camping. Park entry and pavilion use are free of charge. 270-774-7883. Boat ramp available. Camping is permitted, no amenities. 270-524-4752 or 270-524-5701

BIG BUFFALO CROSSING CANOE & KAYAK: Trips include 5 of the state's largest springs, or travel by water into Mammoth Cave National Park. Day or overnight tours can include camping, fishing, swimming, caving, and/or sightseeing. Phone ahead: 866-233-2690 www.bigbuffalocrossing.com

BATTLE FOR THE BRIDGE HISTORIC PRESERVE: A stop on the Civil War Discovery Trail, the John Hunt Morgan in Kentucky Heritage Trail. Interpretive trail begins at the historic Anthony Woodson House, listed on the National Register of Historic Places. Free access from dawn to dusk daily. 270-524-0101 www.battleforthebridge.org

CUB RUN CAVE: With only 14 steps throughout. The ½ hour tour features: stalactites and stalagmites, rare boxwork, rimstone dams, cave pearls, cave bacon and more. Open Wed through Sun. Seasonal. Group rates available. I-65 Exit 65, then right on KY 88 for 13 miles. 270-524-1444 www.cubruncave.net

Visit Munfordville, Kentucky

Allow life to slow down in Munfordville, Kentucky. Our southern, small-town charm will win you over as you stroll the historic downtown, take a cellphone tour, explore the Hart County Historical Museum, dine at one of our locally-owned restaurants, relax at the Green River Park & Arboretum, or canoe the beautiful Green River.

While here, visit our Welcome Center to learn more about our area and shop for many unique and quality items from our gift shop.

We also host several events and festivals throughout the year. From Civil War history to a top KCBS BBQ Cook-Off, Munfordville offers plenty of fun!

For more information,
call 270-524-4752

or visit our website at
VisitMunfordville.com



Country Girl at Heart Farm
BED & BREAKFAST
www.countrygirlatheartfarmbandb.com
(877) STA-4AYL • (270) 531-5276
A TRUE COUNTRY EXPERIENCE AT OUR FARM

www.mammothcavefun.com

270-773-8833

Lodging

The county name of the communities listed below are noted as follows:

BC = Barren County
 EC = Edmonson County
 HC = Hart County

| | | | # ROOMS | # SUITES | RESTAURANT | CABINS | (IN OR OUT) | POOL | REFRIGERATOR | BREAKFAST | COMPLIMENTARY | ACCESS OR W/INT | INTERNET | PET FRIENDLY | MTG. ROOM(S) | BUSINESS CENTER | BUSINESS CENTER | FILTERS | CAMPsites | MARINA | |
|---|----------------|--------------|---------|----------|------------|--------|-------------|------|--------------|-----------|---------------|-----------------|----------|--------------|--------------|-----------------|-----------------|---------|-----------|--------|------|
| EDMONSON COUNTY: I-65, EXIT 48 & 53 (EC) | | | | | | | | | | | | | | | | | | | | | |
| Briar Creek Cottages | 502-741-8941 | | 2 | | | | | | | | | | | | | | | | | | |
| Double J Stables & Camp | 270-286-8167 | | | | | | | | | | | | | | | | | | | | X |
| Hickory Cabins | 270-246-5099 | | | | | 3 | | | X | | | X | | | | | | | | | |
| Lakeside Dreams | 765-349-9948 | | 1 | | | | | | | | | | | | | | | | | | |
| Mammoth Cave Horse Camp | 1-888-682-3958 | 288-682-8167 | | | X | | | | | | | | | | | | | | | | X |
| Mammoth Cave Hotel | 270-758-2225 | | 92 | | X | X | | | | | | | | | | | | | | | |
| Moutardier Resort & Marina | 270-286-4069 | | | | X | 10 | | | | | | | | | | | | | | | X |
| Nolin Army Corps of Engineers | 270-286-4511 | | | | | | | | | | | | | | | | | | | | X |
| Nolin State Park | 270-286-9864 | | | | | | | | | | | | | X | | | | | | | 32 |
| Nolin River Getaway | 302-554-3113 | | 1 | | | | | | | | | | | | | | | | | | |
| Reinecke's Cottage Cabins | 270-286-8029 | | 1 | | | | | | | | | | | | | | | | | | |
| Serenity Hill Bed & Breakfast | 270-597-9647 | | 4 | | | | | | | X | | | | | | | | | | | |
| CAVE CITY: I-65, EXIT 53 (BC) | | | | | | | | | | | | | | | | | | | | | |
| Baymont Inn & Suites | 270-773-2500 | | 50 | | | | | O | | | | | | | | | | | | | |
| Cave County RV Campground | 270-773-4678 | | 51 | | | | | | | | | | | | | | | | | | X |
| Caveland Motel | 270-773-2321 | | 14 | | | | | O | | | | | | | | | | | | | |
| Comfort Inn & Suites | 270-773-3355 | | 63 | | | | | I | | | | | | | | | | | | | |
| Countryside Inn | 270-773-3118 | | 22 | | | | | | | | | | | | | | | | | | |
| Days Inn | 270-773-5100 | | 60 | | | | | | | | | | | | | | | | | | |
| Holiday Motel | 270-773-2301 | | 23 | | | | | | | | | | | | | | | | | | |
| Jellystone Park Camp Resort | 800-523-1854 | 270-773-3840 | | | X | 71 | O (2) | | | | X | X | | | | | | | | | 130 |
| Jesse James Cabins & Campground | 800-798-0560 | | | | X | 5 | | | | | | | | | | | | | | | 18 |
| Motel 6 | 270-773-3101 | | 89 | | | | | O | | | | | | | | | | | | | |
| Mountain Top Retreat & Cabins | 270-773-2995 | | | | | 10 | | | | | | | | | | | | | | | |
| Red Roof Inn & Suites | 270-773-3121 | | 90 | | | | | O | | | | | | | | | | | | | |
| Rock Cabin Camping | 270-773-4740 | | 17 | | | 9 | | | | | | | | | | | | | | | 9-RV |
| Singing Hills RV & Campground | 270-773-3789 | | | | | | | | | | | | | | | | | | | | 39 |
| Sleep Inn & Suites | 270-773-2030 | | 61 | | | | | I | | | | | | | | | | | | | |
| Star Motel | 270-773-2983 | | 21 | | | | | | | | | | | | | | | | | | |
| Super 8 | 270-773-3161 | | 50 | | | | | O | | | | | | | | | | | | | |
| The Wayfarer Cottage | 270-773-3366 | | | | | 1 | | | | | | | | | | | | | | | |
| Travel Inn | 270-773-2138 | | 26 | | | | | | | | | | | | | | | | | | |
| Wigwam Village | 270-773-3381 | | 15 | | | | | | | | | | | | | | | | | | |

Lodging *(continued)*

The county name of the communities listed below are noted as follows:

BC = Barren County
 EC = Edmonson County
 HC = Hart County

| | | | | # ROOMS | # SUITES | RESTAURANT | CABINS | (I)N OR (O)UT | POOL | REFRIGERATOR | COOKING BREAKFAST | ACCESS TO INTERNET | PET FRIENDLY | MTG. ROOM(S) | BUSINESS CENTER | FILTERS | CAMPSITES | MARINA |
|--|--------------|-----------|-----|---------|----------|------------|--------|---------------|------|--------------|-------------------|--------------------|--------------|--------------|-----------------|---------|-----------|--------|
| GLASGOW: I-65, EXITS 36, 43 & 53 (BC) | | | | | | | | | | | | | | | | | | |
| Artist Pad Overnight Loft & Breakfast | 270-590-3445 | 270-629-3 | 463 | | | | | | | | | X | X | X | | | | |
| Barren River Lake State Resort Park | 800-225-0057 | 270-646-2 | 151 | 53 | | X | 22 | O | | | | X | | X | | X | 99 | X |
| Barren River Lake Condos (2-each sleeps seven) | | 270-646-0 | 724 | 2 | | | | | | X | | X | X | | | | | |
| Barren River Lake House (house sleeps eight) | | 270-434-4 | 182 | 1 | | | | | | X | | X | | | | | | |
| Beaver Creek Campground | | 270-646-2 | 055 | | | | | | | | | | | | | | X | |
| Comfort Inn | | 270-651-9 | 099 | 60 | | | | O | X | X | X | X | | | X | X | | |
| Days Inn | | 270-651-1 | 757 | 58 | | | | I | | X | | | | | | | | |
| Four Seasons Country Inn | 270-678-1000 | 877-806-6 | 340 | 21 | 2 | | | | | X | X | X | | | | | | |
| Hall Place B & B | | 866-651-3 | 176 | 4 | 1 | X | | | | | X | X | | X | | | | |
| Happy Valley Inn | | 270-651-5 | 177 | 15 | | | | | | | | | X | | | | | |
| Harston Hideaways | | 270-646-3 | 199 | | | | 3 | | | | | | | | | | | |
| Holiday Inn Express & Suites | | 270-629-2 | 900 | 74 | 20 | | | I | | X | X | | | X | X | | | |
| Main Street B & B | | 270-590-1 | 410 | 5 | | | | | | | X | X | | | | | | |
| Payne Farm Retreat (house with two bedrooms) | 270-427-4529 | 270-427-1 | 167 | 1 | | | | | | | | | | | | | | |
| The Narrow Way Bed & Breakfast | | 270-646-2 | 957 | 6 | 2 | | | | | 4 | X | X | X | | | | | |
| The Narrows Campground on Barren River | 800-444-6777 | 270-646-3 | 094 | | | | | | | | | | | | | | 92 | X |
| Towne Inn | | 270-651-2 | 169 | 28 | | | | O | | | | X | | | | | | |
| PARK CITY: I-65, EXIT 48 (BC) | | | | | | | | | | | | | | | | | | |
| Diamond Caverns Resort | | 270-749-2 | 891 | 44 | | | | O | | | | | | | | | 94 | |
| Grand Victorian Inn | | 270-590-1 | 935 | 11 | | X | | | | | | X | | | | | | |
| Park Mammoth Resort | | 270-749-4 | 101 | 92 | | X | | | | | | | | | | | | |
| The Bishop House (house with two bedrooms) | | 270-579-3 | 839 | 1 | | | | | | | | | | | | | | |
| HORSE CAVE: I-65, EXIT 58 (HC) | | | | | | | | | | | | | | | | | | |
| Hampton Inn | | 270-786-5 | 000 | 101 | | | | I | | X | X | | | X | X | X | | |
| Horse Cave Motel | | 270-786-2 | 151 | 23 | | | | | | X | | X | | | | | | |
| KOA Campground & Cabins | | 270-786-2 | 819 | | | | 8 | O | | | | X | X | | | | X | |
| Quality Inn & Suites | | 270-786-2 | 165 | 70 | 7 | | | O | X | X | X | X | | | X | | | |
| MUNFORDVILLE: I-65, EXIT 65 (HC) | | | | | | | | | | | | | | | | | | |
| Country Girl at Heart Farm B&B | | 877-782-4 | 295 | 5 | | | | | | | X | X | | X | | | | |
| Super 8 Motel | | 270-524-4 | 888 | 50 | | | | | | | X | X | X | | X | | | |

In the Region

  corvettemuseum.org | 270.781.7973
Open Daily, 8am-5pm CT
I-65 Exit 28



\$2 OFF
ADULT ADMISSION
Open Daily, 8am-5pm
Not valid with other discounts. Expires 12/31/19. PLU FUN

Corvette Plant Tours
Mon-Fri. 8:30am-1:45pm
Advanced Reservations Recommended
CorvettePlantTours.com

 **BOWLING GREEN, KENTUCKY**

LOSTRIVERCAVE
UNDERGROUND
BOAT TOUR



\$2 OFF
THE ENTIRE FAMILY!
Ride Kentucky's only underground boat tour!
Open All Year • lostrivercave.com • 270.393.0077 MCFB

Old Friends Visit retired racehorses at KY Downs



I-65 Exits 2 & 6 franklinky.com 866-531-2040



Hot Air Balloon Rides



www.eHotAir.com

- Rides starting @ \$195pp
- 100% safety record
- Sunrise Flights daily
- Mon-Thurs 10% discount
- Private or Group flights
- Up to 6 passengers per flight

Since 2004
Bowling Green,
Kentucky

270.246.2860

BEECH BEND PARK AND **Splash Lagoon**
BOWLING GREEN, KY

Save \$5
Rides & Slides Admission!
Good for up to six admissions.
Not valid with other discounts • MCFB

Amusement Park • Water Park
Campgrounds • Racetrack

KENTUCKY BUMBLER

Great Rides & Award Winning Water Slides!



FREE PARKING 270-781-7634 BEECHBEND.COM

Family Fun for all ages!

\$200 OFF ADULT ADMISSION
\$100 OFF CHILD ADMISSION

The Historic RAILPARK & TRAIN MUSEUM
401 KENTUCKY STREET
BOWLING GREEN, KY
270-745-7317
WWW.HISTORICRAILPARK.COM



Open: May - Oct., Mon. - Sat. 9am-6pm; Sun. 11am - 4pm • Nov. - Apr., Tue. - Sun. 10am-4pm; Mon. - Closed
MCF20172018

www.mammothcavefun.com

270-773-8833