

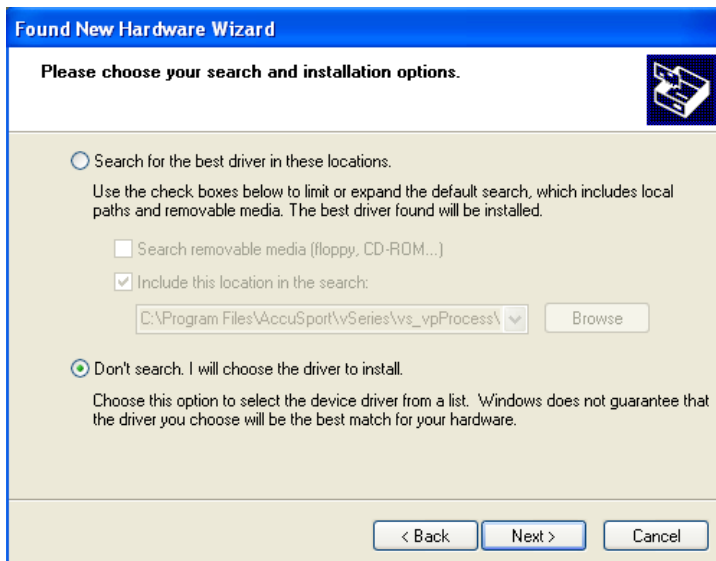
Hardware Installation (Windows XP)

Driver Installation procedure

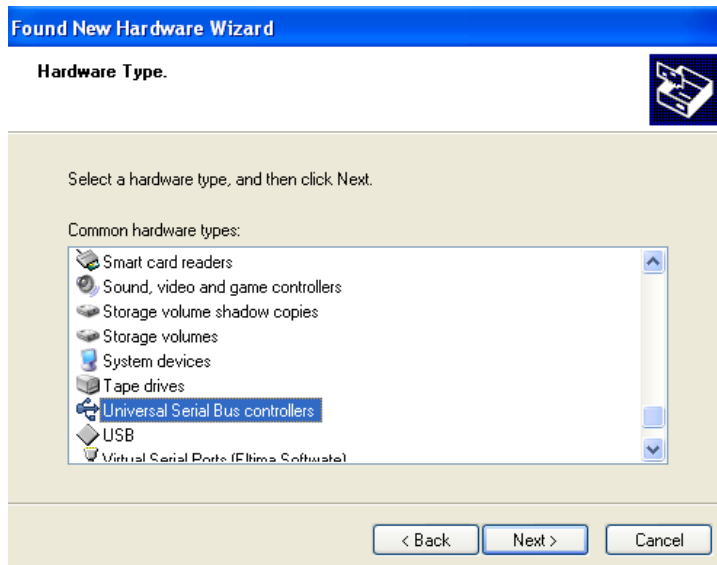
1. Ensure the VSeries Software is installed before starting this procedure.
2. Install the two Vector Pro protective shields. The product warranty will not cover the damages to the unit during use without shields.
3. Use the AC adapter to connect the Vector Pro to a power source.
4. Use the USB cable to connect the Vector Pro to the USB port on the computer.
5. Fold down the rear foot on the Vector Pro and set the unit on the ground.
6. Power on the Vector Pro and two High pitched beeps will sound.
7. The “Welcome to the Found New Hardware Wizard” page will appear select “Install From a Specific Location” and click “Next”



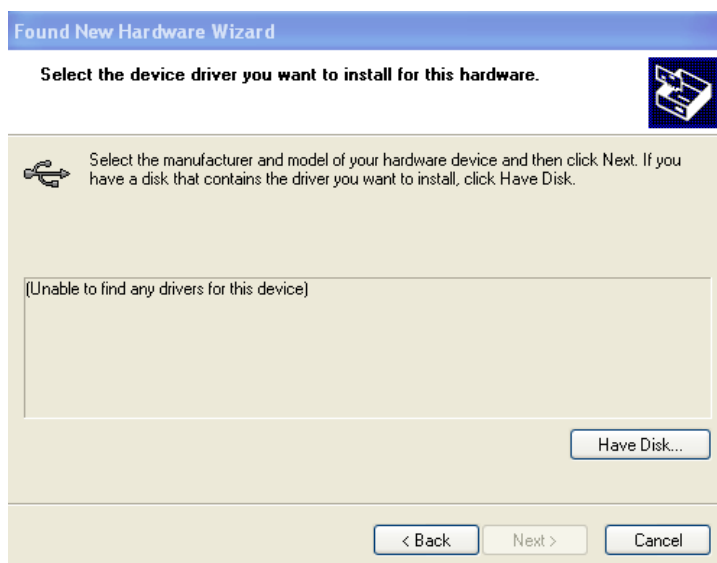
8. The “Please choose your search and Installation options” page will appear. Select “Don’t Search I will choose the driver to install.” Click “Next.”



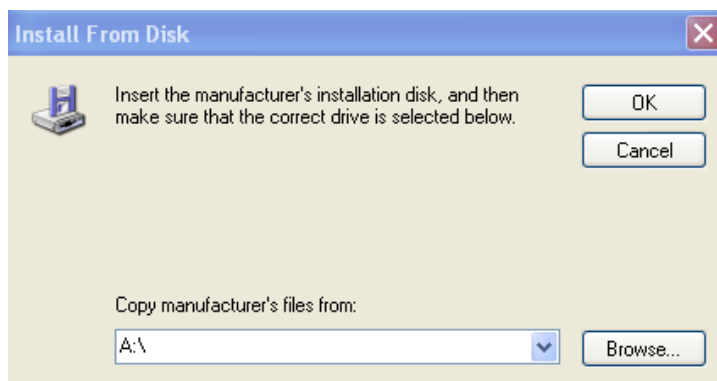
9. The “Hardware type” page will appear. Scroll down and Select the “Universal Serial Bus Controllers” label. Click “Next”



10. The “Select the device driver you want to install for this hardware” page will appear. Click “Have Disk”

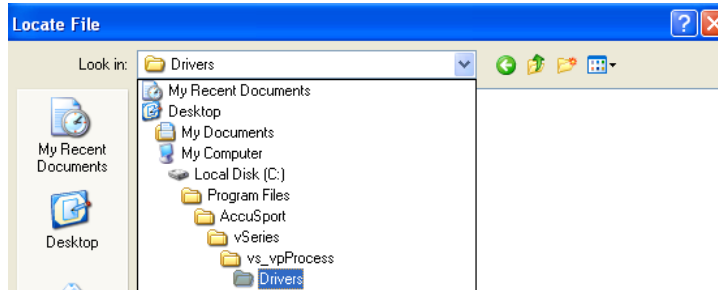


11. The “Install From Disk” page will appear. Click “Browse”

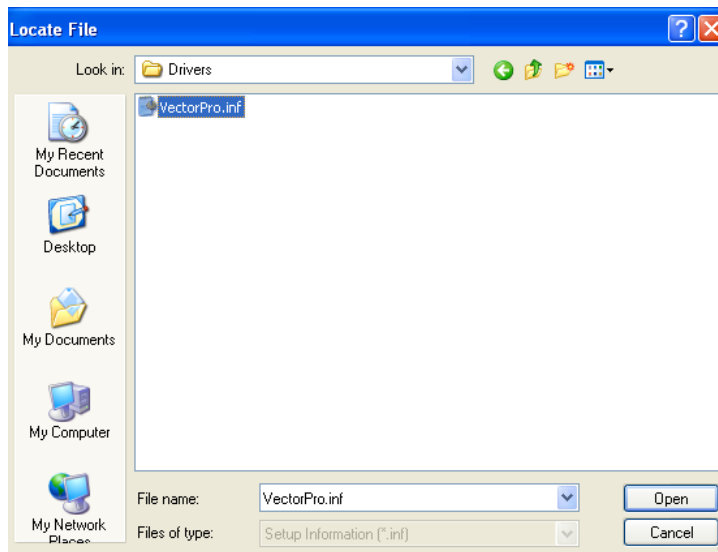


12. The “Locate File” page will appear. Click inside the “Look in” narrow drop down box.

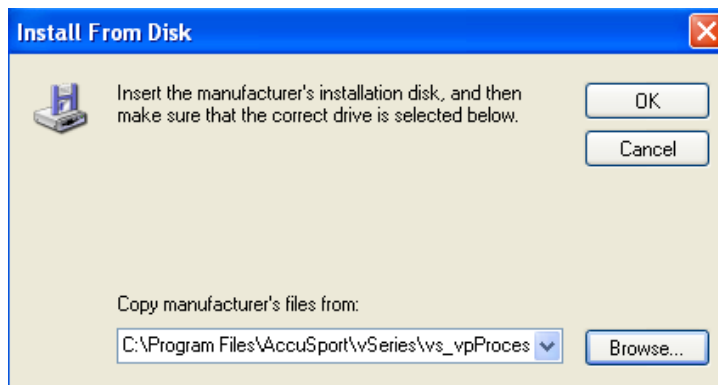
Navigate to the “C:\Program Files\AccuSport\vSeries\vs_vpProcess\Drivers” folder



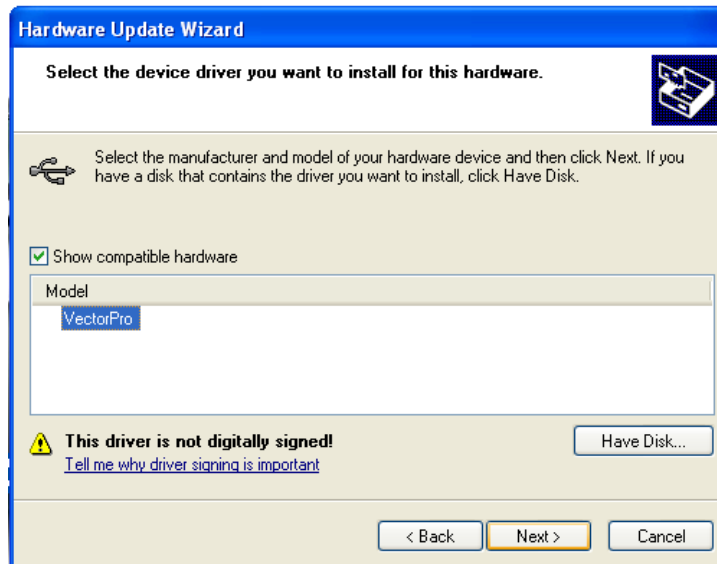
13. In the “Locate File” page Select the “VectorPro” file and click “Open”



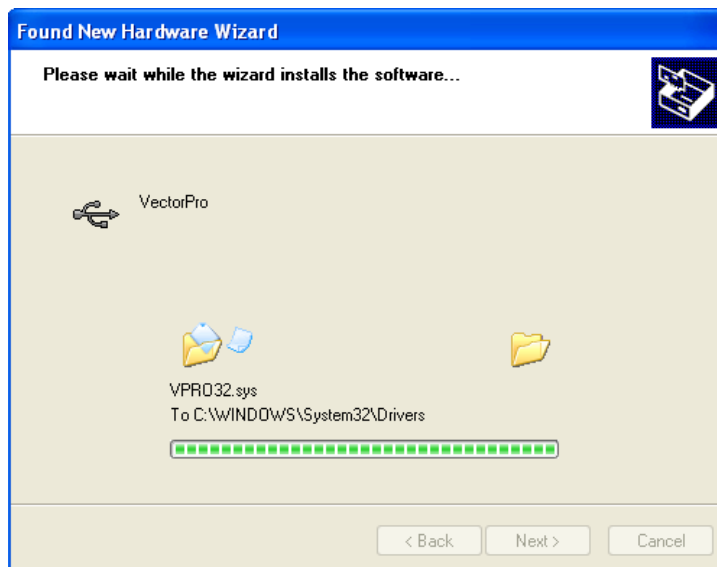
14. The “Install From Disk” page will appear again. Click “OK”



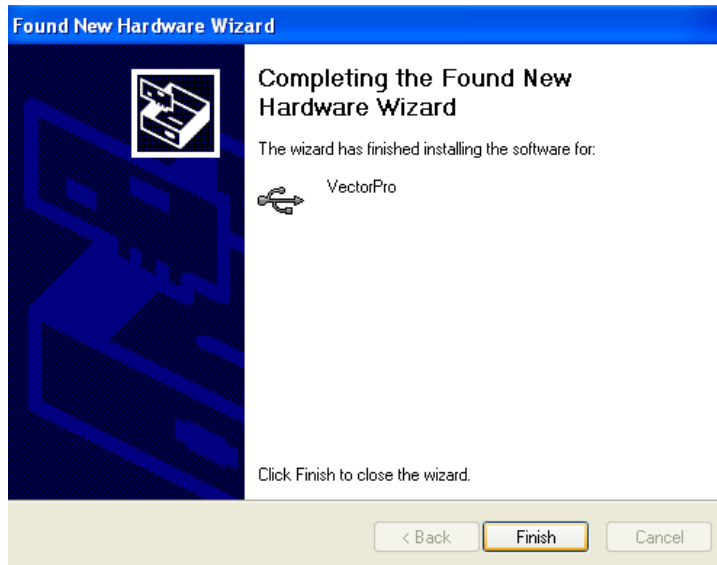
15. The “Select the device driver you want to install for this hardware” page will appear. Click “Next”



16. The first Vector Pro Driver will install.



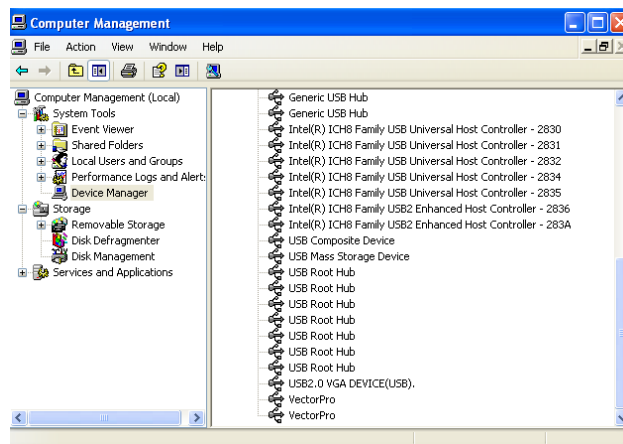
17. The “Found New Hardware Wizard page will appear. Click “Finish”



18. Once the first driver has installed a second found new hardware wizard should appear. Repeat steps 7 through 17 to install the second driver

19. To ensure both Vector Pro drivers have been installed:

- Left Click the Windows XP “Start” Button
- Right Click the “My Computer” label
- Left Click “Manage” in the context Menu
- In the “Computer Management” window select “Device Manager”
- On the right side of the “Computer Management” window scroll down to the “Universal Serial Bus Controller” label. Click on the plus (+) sign
- The Vector Pro drivers should both be listed and should have no exclamation or question marks over them, as shown below.



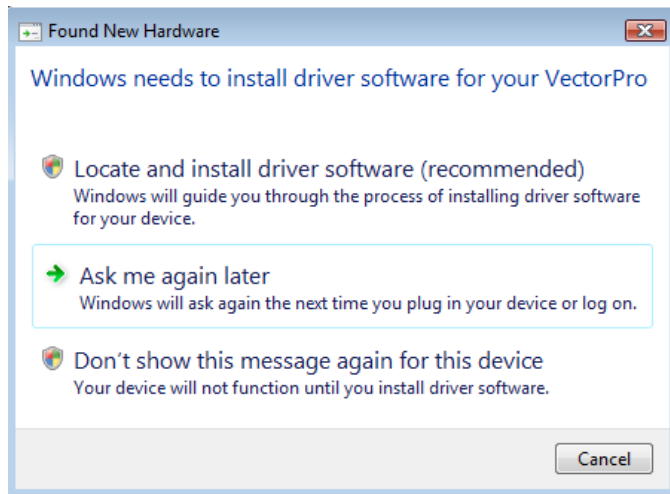
NOTE: If a driver is not installed, right-click on the driver and left-click on ‘Update Driver’ then repeat steps 7 through 16

NOTE: Always use the same USB port on the computer that the drivers were initially installed on. Otherwise, you may have to reinstall the drivers.

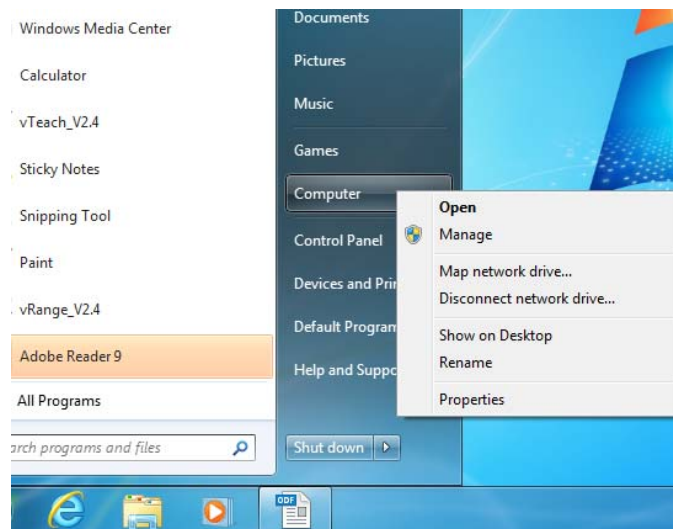
Hardware Installation (Windows Vista , Windows 7 (32/64 bit))

Driver Installation procedure

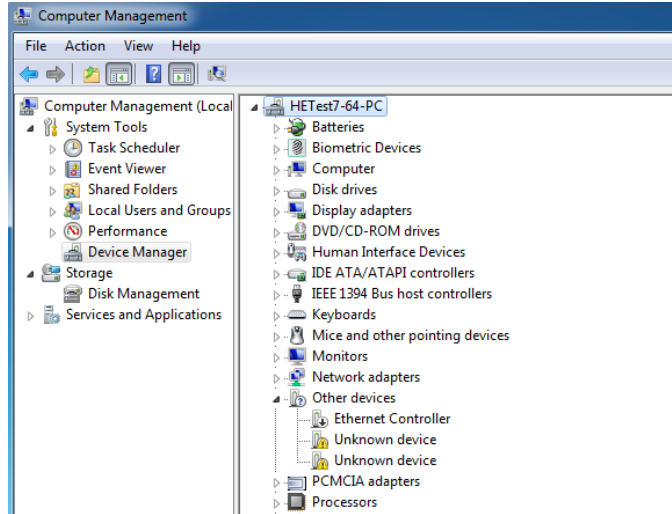
1. Ensure the VSeries Software is installed before starting this procedure.
2. Install the two Vector Pro protective shields. The product warranty will not cover the damages to the unit during use without shields.
3. Use the AC adapter to connect the Vector Pro to a power source.
4. Use the USB cable to connect the Vector Pro to the USB port on the computer.
5. Fold down the rear foot on the Vector Pro and set the unit on the ground.
6. Power on the Vector Pro and two High pitched beeps will sound.
7. If the “Found New Hardware” window appears, click **Don't show this message again for this device**.



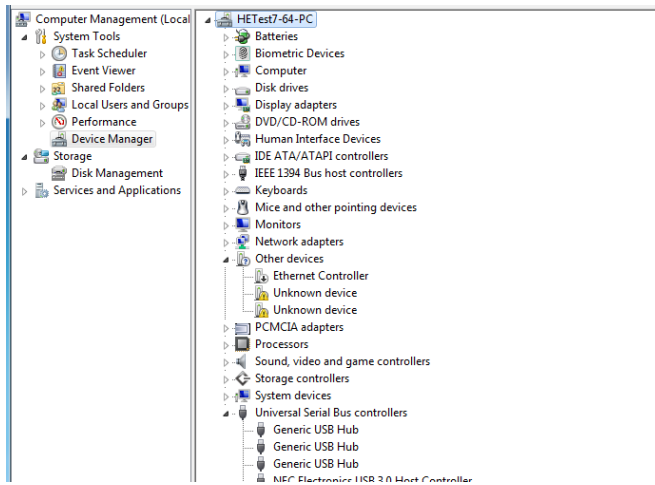
8. Go to the Start menu, right-click 'Computer' and choose **Manage**.



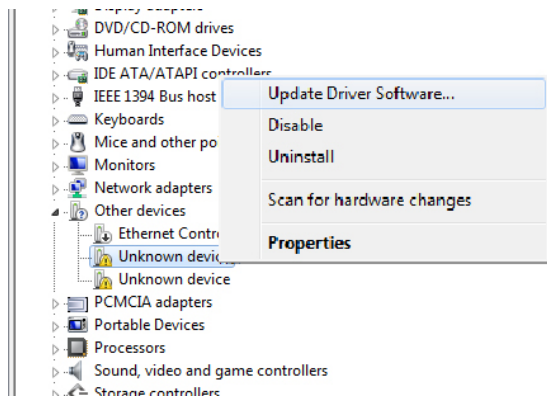
9. On the left, choose **Device Manager**.



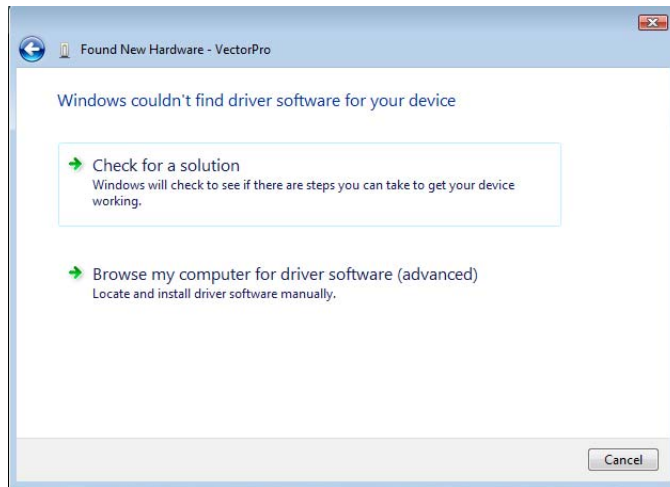
10. Locate the two '**Unknown Devices**' with yellow exclamation marks next to them. (Note: If you have installed the Vector Pro on this computer before, they may be listed as Vector Pro's with yellow exclamation marks, and found under 'Universal Serial Bus Controllers'. The procedure will be the same.)



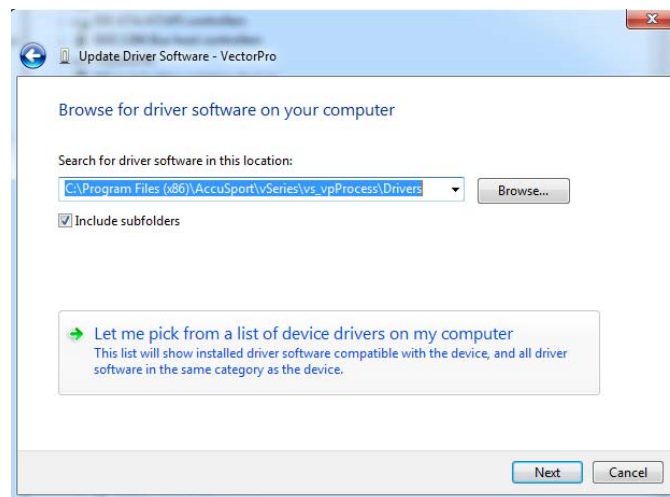
11. Right-click on the first "Unknown Device" and choose **Update Driver Software**



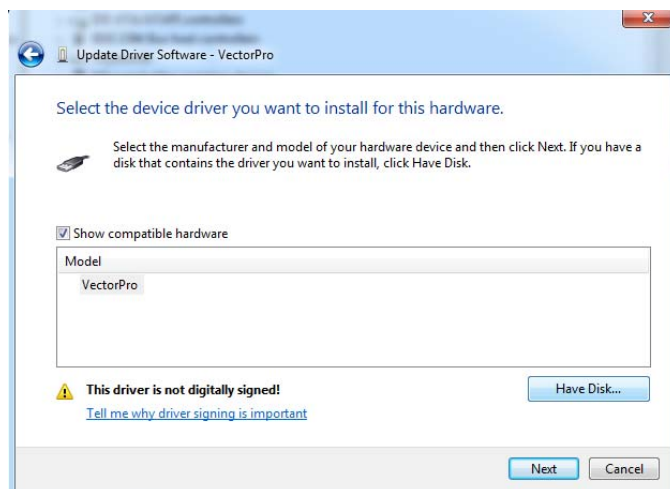
12. The “Found New Hardware” wizard will appear. Choose **Browse my computer for driver software (advanced)**.



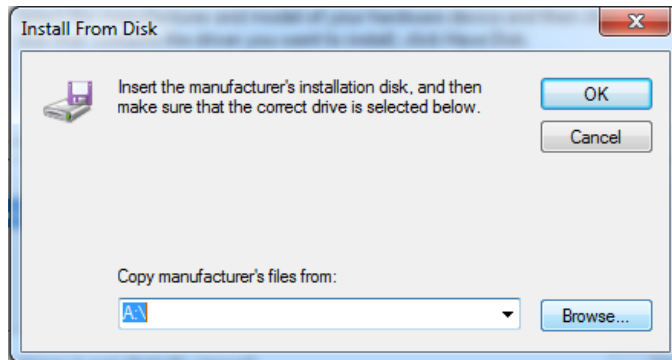
13. The “Browse for driver software on your computer” page appears. Choose **Let me pick from a list of device drivers on my computer**, and click **Next**.



14. The “Select the device driver” page will appear. Click **Have Disk**.

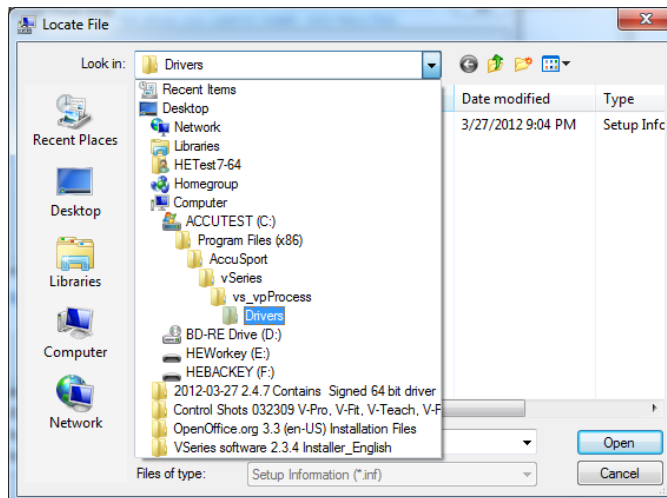


15. The "Install from disk" window will appear. Click **Browse**.

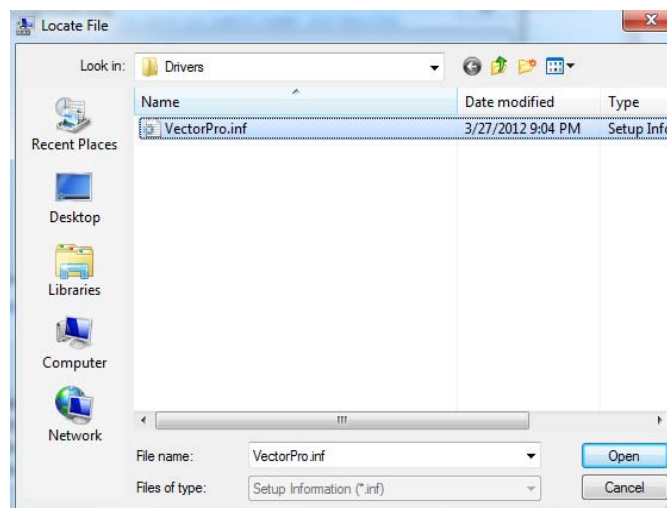


16. Browse to **C:\Program Files (x86)\AccuSport\VSeries\vs_vpProcess\Drivers**

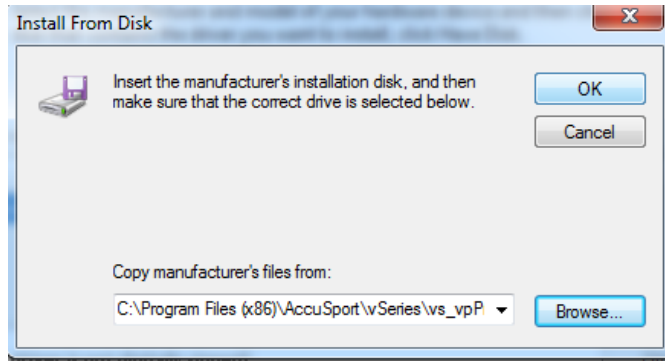
Note: On 32-bit operating systems, the Program Files folder will not have (x 86) and the folder will just be named 'Program Files'



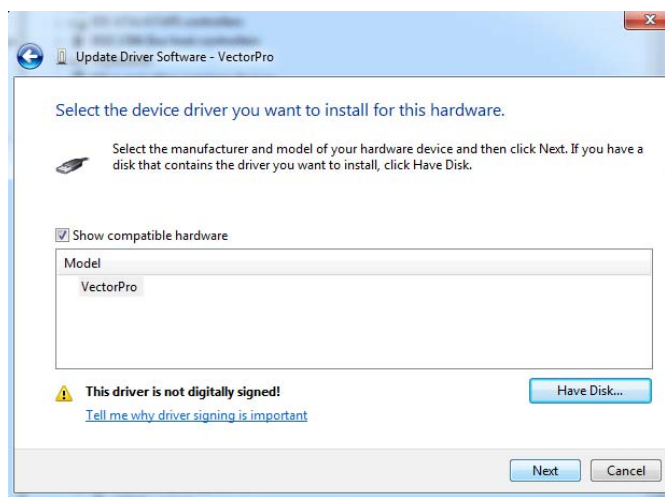
17. Select *VectorPro.inf* and click **Open**.



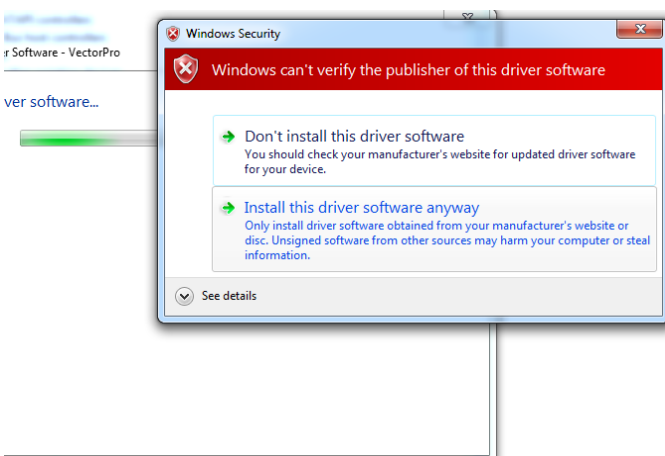
18. The “Install from Disk” window appears again. This time click **OK**.



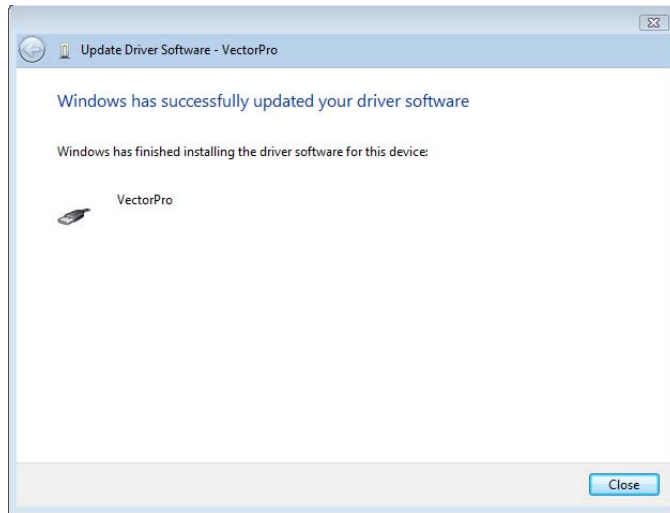
19. The “Select the device driver” page appears again. This time click **Next**.



20. If the “Windows Security” window appears, Click **Install this driver software anyway**

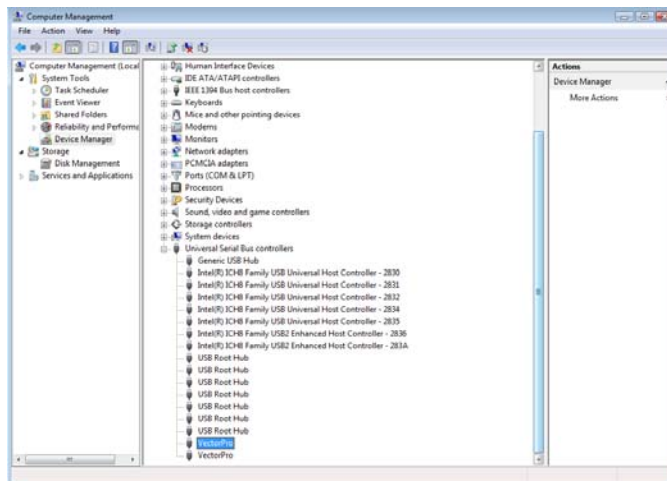


21. After the driver has installed, the “Windows has successfully updated your driver software” page appears. Click **Close** to complete the first driver installation.



22. **Go back to step 12** to install the driver for the second Unknown Device.

23. To verify that both drivers have been installed correctly, scroll down to the “Universal Serial Bus Controllers” label. Click on the plus (+) sign. The ‘Vector Pro’ drivers should both be listed and should have no exclamation or question marks over them, as shown below.



NOTE: If a driver is not installed (still has yellow exclamation mark), repeat steps 12 through 23

NOTE: Always use the same USB port on the computer that the drivers were initially installed on. Otherwise, you may have to reinstall the drivers.