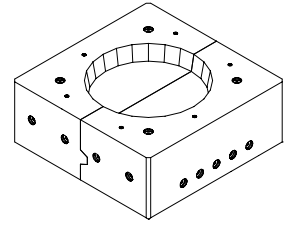


Pre Cast Bottom Custom Order Sheet



INSTRUCTIONS

1. FILL OUT PERTINENT INFORMATION LOCATED ON THE RIGHT OF THE DRAWING.
2. DRAW BOLT HOLE PATTERN & DIMENSIONS ON TOP VIEW & BOTTOM VIEWS.

PLEASE FILL IN THE FOLLOWING INFORMATION

Furnace Type:

- Ajax _____ Lbs Furnace
- Inducto _____ Lbs Furnace
- Duraline _____ Lbs Furnace
- Other, please specify _____

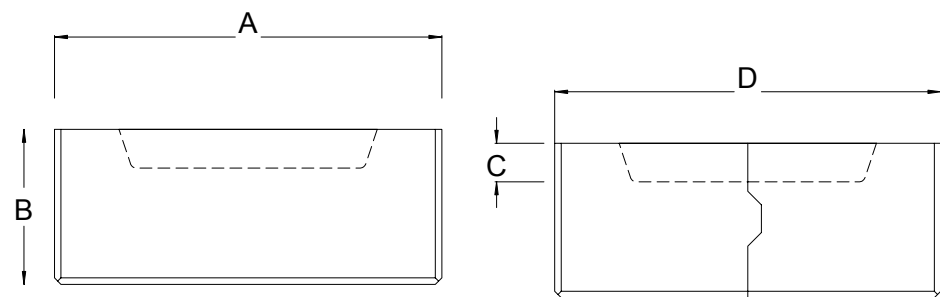
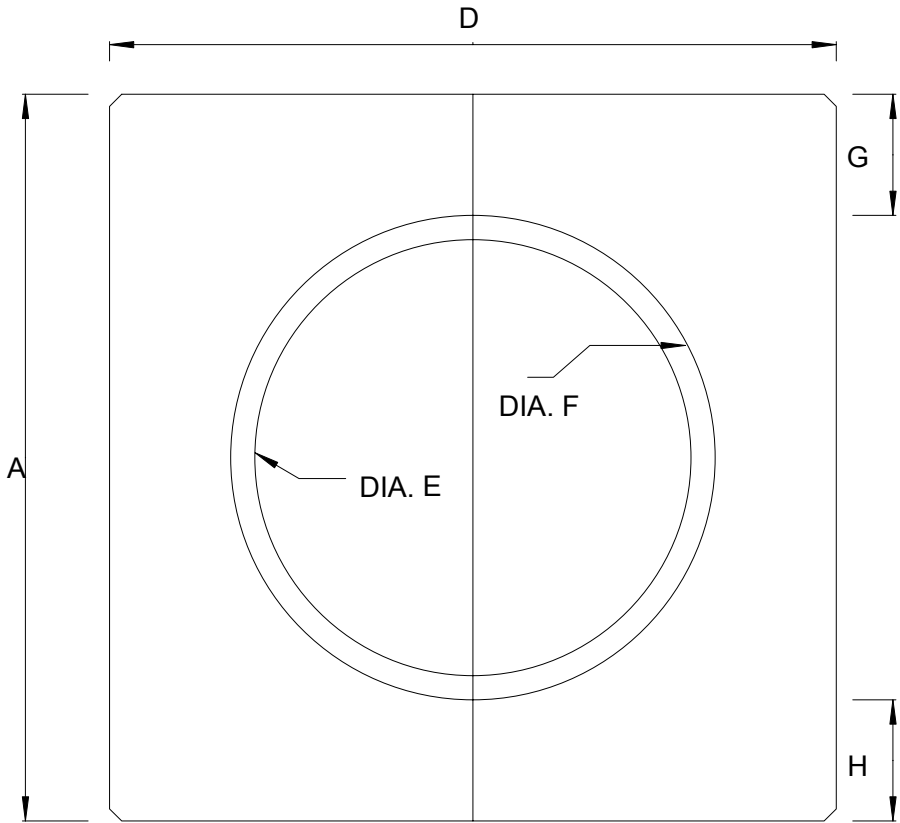
DIMENSIONS

A		E	
B		F	
C		G	
D		H	

BOLT HOLE DIAMETER	TOP	
	SIDE	

NOTE: COUNTERSINKS ARE 1 1/2" DIA X 1/2" DEPTH (TYP.) BOTTOM SIDE EDGES AND SIDE CORNERS ARE CHAMFERED 1/2" AT 45 DEG. (TYP.)

PLEASE NOTE ANY CHANGES IF NEEDED.



OFFICE USE ONLY

Material Used

Castable: _____

Needles

%: _____

Type: _____

Volume Needed: _____

DWG #: 107-_____ - _____

This drawing and all information is the property of Delta Refractories, Inc. It is confidential and given to you for a limited purpose. Neither this drawing nor any part of this document may be copied, exhibited, or furnished to others without the consent of Delta Refractories, Inc.