

The September 2016 Newsletter Gardens Gate



Port St. Lucie
Botanical Gardens
Florida

Welcome
Autumn!

PHOTOGRAPHING THE GARDENS

The Gardens is a wonderful place to photograph and many a photographer come through our doors to capture the beauty and grace that is the Port St. Lucie Botanical Gardens. One such photographer is **Wayne Goldenberg**, a local photography hobbyist who frequently photographs plants, flowers, insects, animals and birds here at The Gardens. He enjoys sharing his art in various formats as gifts to family and friends. Keep an eye on the Reader Snapshot of the St. Lucie Tribune – you will frequently see his works – and many of those were taken at The Gardens! *Editor*



Continued on Pg 3

CONTENTS :

President's Message
Board & Committees
Volunteers Needed & Wish List
Out & About with The Gardens
Shade House Update
September Calendar
September Planting Calendar

[Pg2](#)
[Pg2](#)
[Pg6](#)
[Pg7](#)
[Pg10](#)
[Pg11](#)
[Pg13](#)

Garden of The Month
Gift Shop Update
Can You Dig It
Horticulture Know How
How-To Series: Hibiscus & Orchids
Happenings @ The Gardens
How-To Series: Hydroponics
Trick or Treat Ramble Invite
Supporters & Jazz Jams

[Pg15](#)
[Pg16](#)
[Pg17](#)
[Pg19](#)
[Pg22](#)
[Pg25](#)
[Pg26](#)
[Pg27](#)
[Pg28](#)

R e m i n d e r

**HERBS, VEGETABLES & MORE
PLANT SALE
SEPTEMBER 24TH • 9AM - 1PM**



Port St. Lucie *Botanical Gardens*

2410 SE Westmoreland Blvd.

Port St. Lucie, FL 34952

Phone: 772.337.1959

Fax: 772.237.5952

E-mail: info@pslbotanicalgardens.org

Web: www.pslbotanicalgardens.org

Hours: Wednesday - Saturday 10am - 4pm

Sunday Noon - 4pm

Closed Monday, Tuesday & Holidays

Suggested Donations:

Adults \$5

Students \$2

Children 12 & Under Welcome

Members and Active Military

(with family) Welcome (IDs required)

Mission Statement . . .

Friends' mission is to create and maintain a beautiful, serene sanctuary in the center of Port St. Lucie that is environmentally sound and naturally diverse and to provide educational, cultural and recreational opportunities for all who visit.

Officers & Directors . . .

| | |
|-----------------|-----------------------|
| President: | Joleen King |
| Vice President: | Illona Christie |
| Secretary: | Claire Clark |
| Treasurer: | Cheri Mabry |
| Directors: | Brenda Gustafson |
| | Jeffrey Policar |
| | Gloria "Gigi" Norelli |
| | Kate O'Neill |
| | Jennifer Scee |
| | Tim Sutton |

Standing Committee Chairs . . .

| | |
|-----------------------------------|-----------------|
| Strategic Planning Committee: | Joleen King |
| Horticulture Committee: | TBD |
| Finance Committee: | Cheri Mabry |
| Membership & Volunteer Committee: | Illona Christie |
| Gift Shop Committee: | Jennifer Scee |
| Resource Development Committee: | Claire Clark |
| Election Committee: | Debby Augst |

Newsletter...

| | |
|---------|----------------|
| Editor: | Judy Nash-Wade |
| Design: | Mark Barnes |

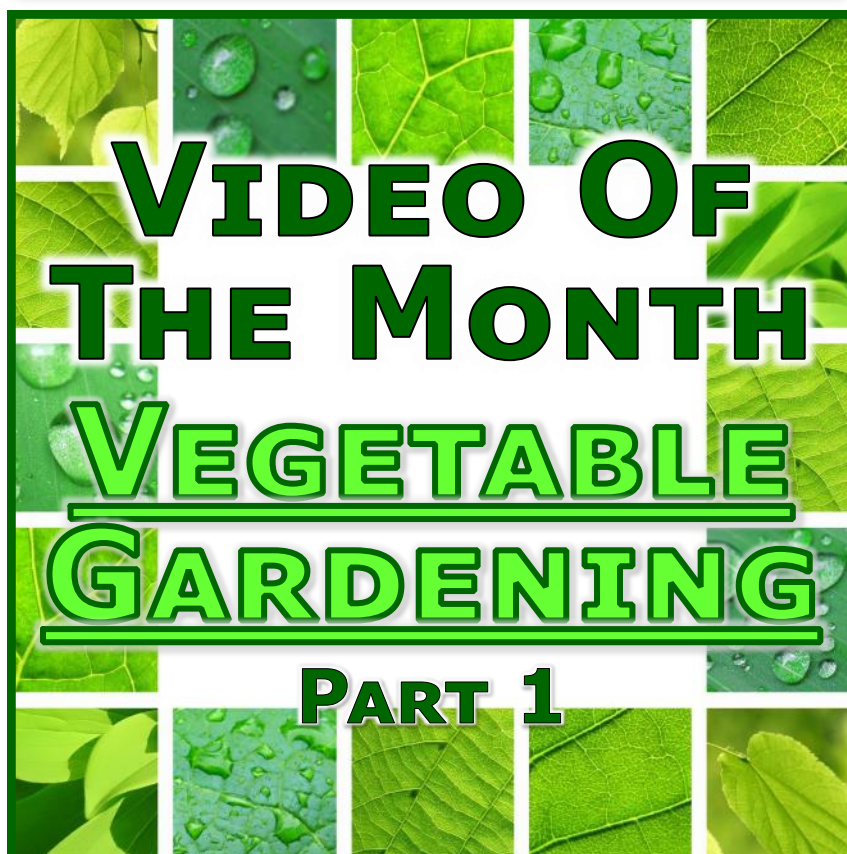
The Port St. Lucie Botanical Gardens is managed and operated by Friends of the Port St. Lucie Botanical Gardens, Inc. The Friends of the Port St. Lucie Botanical Gardens, Inc. receives no funding from any government agency. Your admission donations help us maintain and grow The Gardens.

PRESIDENT'S MESSAGE...

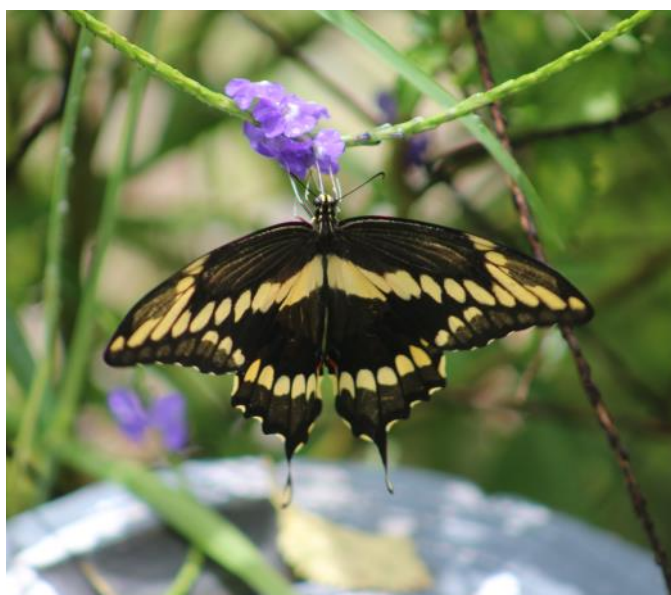
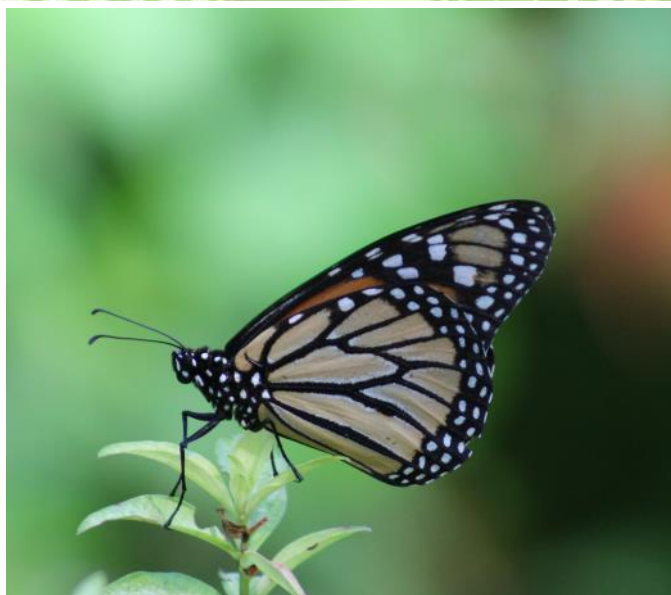
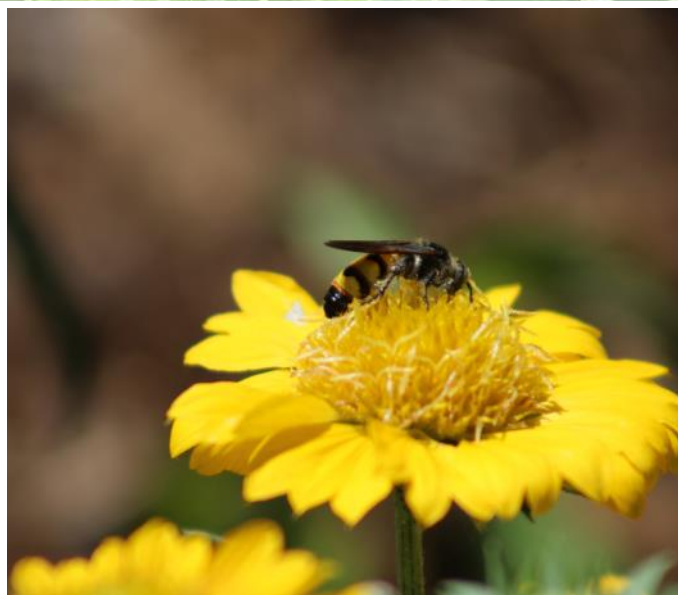
While much of the country is beginning to sense the change of seasons, we here in South Florida will experience a more gentle shift, but a genuine change. Sometimes we don't recognize the change until the stores drag out the holiday paraphernalia; a sure sign. You'll discover that this September newsletter is beginning to celebrate the coming of Fall with workshops on vegetables, the September planting calendar, and our Incredible Edibles plant sale at the end of the month. There is much to discover at the PSL Botanical Gardens. Come visit soon. And if you have a desire to volunteer, we'd love to talk! We're very much a 'growing community'.



Joleen King
President







Lobby Floral Design by Paul Renwick featuring Flowers from our Garden



September
Plant

SPECIALS

PSLBG Propagation

**Purchase 2 plants &
receive a small Plant FREE**

Our PSLBG Propagation Center has a large variety of plants starting at \$2 and trees at very reasonable prices.

We're open:

Sunday • 12pm – 4pm

Wednesday-Saturday • 10am – 4pm



Volunteer at the Friends of the Port St Lucie Botanical Gardens

Propagation:

Assist with propagation, plant sales and all areas of propagation techniques. No experience needed.

Bring gloves and clippers.

Thursday – Saturday 8:30AM – 12PM in the Propagation Area.

Please call Brenda Gustafson at 772-678-8523.



Center & Gift



If you enjoy greeting and meeting 'The Gardens' guests, handing out informational materials, answering the telephone and assisting with questions and requests this is the place for you. Assist in the selection and sales of books, gifts and other merchandise. Capable of handling money and accountable for gift shop receipts. Ability to work well with other volunteers and the public. Open Wednesday – Saturday – 10AM-4PM, Sunday 12AM-4PM. No experience needed. Retail experience in Gift Shop a plus.

Please Call Illona Christie at 772-337-1959



The Gardens

wish list

The Friends of the Port St. Lucie Botanical Gardens are always in need of the following materials to help our Gardens to Grow:

- Plant cuttings for Propagation
 - Yard and garden tools
- Halloween decorations in good condition
- Holiday decorations in good condition

Please contact Brenda Gustafson (772-678-8523) or Illona Christie (772-337-1959) for more information or to arrange for item drop off.

Out & About



With The Gardens



Illona Christie, Mark Barnes and Judy Nash-Wade (not shown) promoted The Gardens to a large number of prospective visitors at the Port St. Lucie Civic Center. Also shown: Table neighbor, Beth Allen.



Rare Fruit Club demonstration at the Taste of the Tropics Plant Sale 7/2/16



Kids Event 7/30/16: Helping Save The Planet





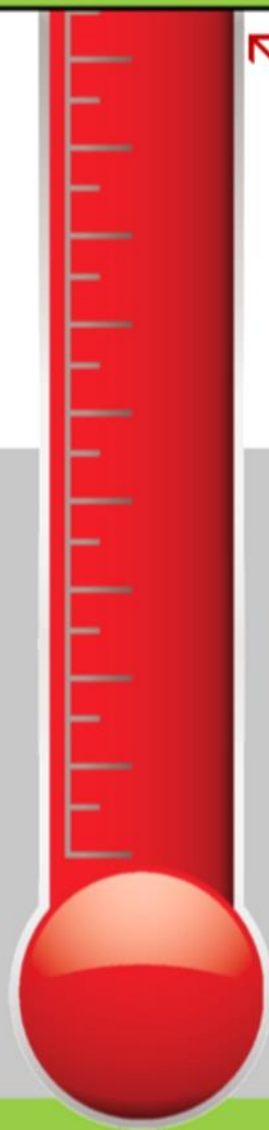
**Goal
\$5,000**

100%

Shade House Appeal

SUCCESS

Because of your wonderful support, we have met **100%** of our dollar goal for this important project and have raised the **\$5,000** necessary to begin construction of the Propagation Shade House!



THANK YOU FOR MAKING THIS FUNDRAISER SUCCESSFUL!

Donations are still appreciated and can be made on-line at:
www.pslbotanicalgardens.org

You can also mail your check to:
**Friends of the Port St. Lucie Botanical Gardens, Inc.
2410 SE Westmoreland Blvd., Port St. Lucie, FL 34952**

Donations are deductible to the extent allowed by law Friends is a 501(c)(3) non-profit organization



September

Calendar of Events

| | | | |
|------------------|--|---------------------------|--|
| 1 st | German American Chorus Rehearsal | 2:00 pm - 4:00 pm | Members Welcome |
| 7 th | Adv. Beginning Spanish Classes | 10:00 - 11:30 am | Fee info. call 772.924.1002 |
| 7 th | German American Club Board Mtg. | 2:00 - 4:00 pm | Members Welcome |
| 7 th | Ft Pierce Jazz & Blues Jazz Jams | 6:30 - 9:30 pm | \$ 5 Donation, Members \$4 |
| 8 th | PSL Anglers Club Meeting | 6:30 - 9:00 pm | All Welcome |
| 11 th | Crosstown Chapel Anniversary | 8:00 am - 1:00 pm | Members Only |
| 12 th | Rio Lindo Board Meeting | 10:00 am - 12:00 pm | Rio Lindo Board Members |
| 12 th | Board of Directors Meeting | 5:00 - 7:00 pm | Members Welcome |
| 13 th | Orchid Society Meeting | 11:00 am - 3:00 pm | Members Welcome |
| 14 th | Adv. Beginning Spanish Classes | 10:00 - 11:30 am | Fee info. call 772.924.1002 |
| 15 th | Hibiscus Society Meeting | 10:30 am - 1:00 pm | All Welcome |
| 15 th | German American Chorus Rehearsal | 2:00 - 4:00 pm | Members Welcome |
| 17 th | Keep St. Lucie Beautiful Tree Giveaway | 7:00 - 10:00 am | All Welcome |
| 21 st | Adv. Beginning Spanish Classes | 10:00 - 11:30 am | Fee info. call 772.924.1002 |
| 21 st | Ft Pierce Jazz & Blues Jazz Jams | 6:30 - 9:30 pm | \$5 Donation, Members \$4 |
| 22 nd | St. Lucie West Garden Club | 11:30 am - 2:00 pm | Members Only |
| 23 rd | New Horizon's Suicide Prevention | 10:00 - 11:00 am | All Welcome |
| 24 th | Vegetables, Herbs & More Plant Sale | 9:00 am - 1:00 pm | All Welcome |
| 24 th | Children's' Program: Garden in a Bag | 11:00 am - Noon | Children 4 - 12yrs old. Registration Required - Call 772.337.1959 |
| 24 th | How-To Series: Growing Vegetables Using Hydroponics | 9:30 am - 10:30 am | Members Free Non-Members \$10 - Registration Required. |
| 26 th | Rio Lindo Garden Club Meeting | 12:45 - 4:00 pm | Members Welcome |
| 28 th | Adv. Beginning Spanish Classes | 10:00 - 11:30 am | Fee info. call 772.924.1002 |

For more information on these & other events, please call 772.337.1959

Are you a Member of Friends? Friends Membership is...



Horticulture



Education



Preservation



Community



Become a Member of a Growing Community...
Friends of the Port St. Lucie Botanical Gardens, Inc.



**Click Here to
Join or Renew Your
Membership Today**

UF | IFAS Extension

UNIVERSITY of FLORIDA

University of Florida IFAS Extension
Central Florida Gardening Calendar — September

What to Plant

Annuals/Bedding plants: If summer beds need refreshing, try ageratum, coleus, celosia, zinnia, and wax begonia for color into fall. **See** *Annuals*: http://edis.ifas.ufl.edu/topic_annual_landscape_plants

Bulbs: Add color, texture, and pattern to the garden with the many varieties of elephant's ear that are available. **See** *Bulbs for Florida*: http://edis.ifas.ufl.edu/topic_bulbous_flowers

Herbs: Plant herbs that tolerate the warm temperatures of early fall, such as Mexican tarragon, mint, rosemary, and basil. **See** *Herbs*: http://edis.ifas.ufl.edu/topic_herbs

Vegetables: It is hot, but numerous cool-season (as well as warm-season) crops can be planted. **See** *Vegetable Gardening in Florida*: http://edis.ifas.ufl.edu/topic_vegetable_gardening

What to Do

Lawn problems: Continue to monitor the lawn for signs of insect damage. Fall armyworms, chinch bugs, mole crickets, and sod webworms are still active this month. **See** *Turfgrass Pest Insects*: http://edis.ifas.ufl.edu/topic_turf_pest_insects

Perennials and bulbs: Divide and replant perennials and bulbs that have grown too large or need rejuvenation. Add organic matter to new planting areas and monitor water needs during establishment. **See** *Seeds and Propagation (Lawn and Garden)*: http://edis.ifas.ufl.edu/topic_garden_propagation

Irrigation: Check that irrigation systems are providing good coverage and operating properly before summer rains taper off. **See** *Landscape Irrigation*: http://edis.ifas.ufl.edu/topic_landscape_irrigation

Citrus: Fertilize citrus with a balanced fertilizer either this month or in October. If the weather has been rainy, do not use soluble nitrogen as rains will leach it from the soil too quickly. **See** *Home Citrus Culture*: http://edis.ifas.ufl.edu/topic_citrus_home_citrus_culture

Vegetable gardens: Prepare the fall vegetable garden if not done in August. Using transplants from your local garden center will get the garden off to a fast start, but seeds provide a wider variety from which to choose. **See** *Vegetable Gardening in Florida*: http://edis.ifas.ufl.edu/topic_vegetable_gardening

Thank you **FOR YOUR SUPPORT**

Thank you to the following Donors who
are making our Shade House possible:



GL Homes - \$2,955
St. Lucie West Garden Club - \$1,000
Volunteerism Always Pays - \$250
Beatrice Cooper - \$100
Brenda Gustafson - \$100
Illona Christie - \$100
Joleen King - \$100
Judy Nash-Wade - \$100
Pat & Bob K. - \$100
Paul Renwick & Jerome Post - \$100
Anonymous - \$45
Pat Gerber - \$25
Renee & Brian Major - \$25

GARDEN OF THE MONTH: ROSE GARDEN

MAINTAINED BY MAINTAINED BY RIO LINDO GARDEN CLUB

Rio Lindo Garden Club of Port St. Lucie undertook the Rose Garden while Connie Lydon was President and current members continue to maintain and nurture it.

There are four different rose bushes growing in our Rose Garden. All are easy to grow - all they need is water, sun, food and pruning!

Prosperity performs consistently well without fuss and even performs well in shade. Its panicles of fragrant, fluffy blooms come frequently and are set off by darker stems and foliage. With support it will easily reach 8 or more feet, but with proper pruning can be held to hedge height as well. This is truly a gracious rose and often recommended where a backdrop for perennials or a wedding is desired.

Natchitoches Noisette, our antique rose, is medium sized with prolific blooms of cupped, light pink flowers that may bravely bloom even in mid-December. Their fragrance is outstanding immediately after opening.

Louis Philippe flowers are double, deep crimson with a touch of blush at the center with an occasional white streak through the petals. This rose is often confused with 'Cramoisi Superieur', but Louis Philippe is more compact and the color varies. This rose may also be known as the Zavala rose.

Clotilde Soupert is a truly amazing Polyantha rose. The blooms are beautiful and so distinctive that noted rosarians have identified it instantly from casual paintings. The flowers, from nearly spherical buds, reveal a warm rosy pink interior with more than 100 petals. As the blooms continue to open, the outer petals fade to pearly white, with the center petals retaining their soft pink color. Add to this an intoxicating fragrance, and you have a truly wonderful rose.

Linda Trottier, Rio Lindo Garden Club President

[Rio Lindo Garden Club on Facebook](#)



VISIT OUR GIFT SHOP

Refreshments!



Cold bottled water and fans!



For the Gardener!



Also see our:

- Décor
- Jewelry
- Gifts
- Books
- New Consignment Items
- Art from local artist Jaime Banta
- and items just for KIDS!

**Join the gift shop volunteer team – it's cool inside.
Lots of fun and rewarding!**



Can You Dig It?



MOUNTS BOTANICAL GARDEN

Mounts Botanical Garden is a botanical garden located in West Palm Beach, Florida. It is Palm Beach County's oldest and largest public garden with over 2,000 species of tropical and subtropical plants from six continents, including plants native to Florida, exotic trees, tropical fruit, herbs, citrus and palms. Mounts is a component of the Palm Beach County Cooperative Extension Service and is affiliated with the University of Florida / IFAS.

HISTORY

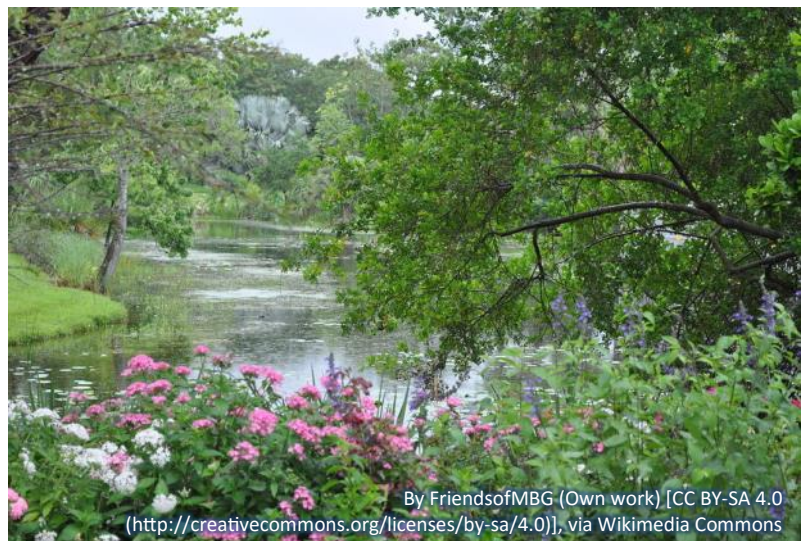
Botanical plantings began shortly after the Mounts Building was built and opened in 1954. Then Palm Beach County Cooperative Extension Director, Marvin Mounts, desired to create a tropical fruit tree arboretum on the adjacent three acres. This vision was never realized, but many tropical fruits were planted and a few remain to this day.

In 1975 Clayton Hutcheson, Palm Beach County Cooperative Extension Director, had a vision of creating a Horticultural Learning Center on the three acres surrounding the Mounts Building, which housed the Extension Service. This initiative was successfully supported by many local plant-focused organizations and volunteers and was created in 1983. Today's Garden was formed by a public-private partnership of Palm Beach County and the Friends of Mounts Horticultural Learning Center in 1985. Ten additional acres were added to the property in 1985, bringing the total acreage to fourteen. In 1986, the Friends voted to officially change the name to Mounts Botanical Garden for a more clear understanding of the organization and its mission driven purpose.

In 2004, the Friends funded a research grant to the University of Florida to produce a Master Plan to guide the Garden's future development. During 2004 and 2005 Hurricanes Frances, Jeanne and Wilma destroyed 70% of the property's mature tree canopy and virtually shattered the original Garden. Since 2006, The Friends and Palm Beach County have restored both the lost tree canopy and the Garden.

GARDENS

- **Butterfly Garden**, where you will commonly find a dozen or so different species of butterflies at any given time
- **Rainbow Garden**, arranged in a spectrum of color hues, this full sun garden showcases a wide variety of plants that grow well in Palm Beach County



By FriendsofMBG (Own work) [CC BY-SA 4.0
(<http://creativecommons.org/licenses/by-sa/4.0/>)], via Wikimedia Commons

- **Dry Stream Bed**, allows water a cleansing path flowing through the landscape
- **An Edible Landscape**, offers a wide variety of tropical fruits, seasonal vegetables, flowers and herbs that can be successfully grown in South Florida
- **Garden of Well Being**, showcases plants that have made our lives better through taste, cosmetics, teas, medicinal use, dyes, ceremonies and folk remedies
- **Tropical Foliage Border**, non-woody tropicals in two gently curving borders reliant on foliage color has a visual impact that lasts year-round
- **Garden of Extremes**, features plants and materials often unique to extremes such as light and weather conditions
- **Rose and Fragrance Garden**, pleases the eye while fragrance adds another level of indulgence
- **Our Island: Zimmerman Color and Shade Garden**, provides color in the shade through foliage, diverse texture and flowers
- **Tropical Forest**, lush foliage and ferns provide a feeling of a tropical forest, outdoor or living conservatory
- **Tropical Cottage Garden**, traditional elements include an abundance of colorful flowering perennials, annuals and vines, cascading over arbors and trellises
- **Begonia Garden**, highlights this popular plant which grows in the tropics along edges of forests or river banks
- **Florida Native Plant Garden**, comprises a Native Plant Initiative demonstrating the wide variety of plants native to South Florida in a traditional, easy to understand landscape design
- **Mediterranean Garden**, shows how to successfully grow Mediterranean plants or very reasonable substitutes that will thrive in the South Florida climate
- **O'Keeffe Rain Garden**, demonstrates how we can improve the quality of all runoff water in our region
- **Trial Garden**, where we evaluate plants for how well they will perform for the average gardener or landscape
- **Gazebo Garden**, covered in dappled shade, foliage and flower color, this is the setting for many of the weddings held in the Garden



By FriendsOfMBG (Own work) [CC BY-SA 4.0 (<http://creativecommons.org/licenses/by-sa/4.0/>)], via Wikimedia Commons

See More at: https://en.wikipedia.org/wiki/Mounts_Botanical_Garden



HORTICULTURE KNOW HOW...

Friends of the Port St. Lucie Botanical Gardens

Horticulture Class Series 2016

Vegetative Propagation

Air Layering

Air layering is a fun way to propagate a plant while it is still attached to the mother plant!



Step 1

Select a side branch on the mother plant. This area can be treated with a rooting hormone if the plant is very woody or difficult to root. Apply a large handful of wet sphagnum moss around the girdled stem. Be sure that the entire area is covered with the wet moss.

Step 2

Use a knife to peel off the outer layer of the stem. This “girdling” will encourage roots to form.



Step 3

Use foil to cover the moss. Mold the foil around the moss so that it fits tightly.



Step 5

Cut & plant.

Step 4

Cover the entire foil area with a clear plastic wrap. The ends can be secured with yarn or tape. This will keep your air-layer dark and moist to encourage new roots to grow.





⌘ Next month will feature “Division & Root Cuttings” ⌘



*The content of this lesson plan was provided by Propagation Resource an on-line service.

It should be noted that varying propagation resources have a variety of views and it is up to the individual to determine what information best fits one's own needs.

Orchids, Orchids & More...



**Please join us at the
Port St. Lucie Botanical
Gardens On Saturday,
August 27, 2016
for a plant sale featuring
Orchids, Orchids, & More...**

**The plant sale will begin at
9am and run through 1pm,
featuring everything
Orchids and much more,
Including numerous vendors
who are sure to delight
all who attend.**

**Saturday - August 27, 2016
9am - 1pm**

PROPAGATION SPECIALS: Plants starting at \$2 ~ AND ~ Buy two plants, get one small plant free

Horticulture How-To Series:
**The Hibiscus Enthusiast
&
Orchids, Orchids Galore**
Port St. Lucie Botanical Gardens

Saturday • August 27, 2016
Inside The Gardens Pavilion



The Hibiscus Enthusiast • 9:00am - 10:00am

Presenter Mike Overly has been a Hibiscus Hobbyist for over 25 Years. He gained his growing knowledge and enthusiasm alongside Hibiscus Hybridized Specialist and founding member of the Treasure Coast Hibiscus Society, Joe Lubbock. Mike has been involved with the American Hibiscus Society and local chapter of the Society in West Palm Beach for a number of years and also served as chapter President. He has won premium awards from the American Hibiscus Society Shows for growing and presenting vibrant colored hybrid flowers. In this presentation

he will focus on how to grow these wonderful flowers and present colored photos of his hobbyist work. Questions and answers will provide information that will give insight into the interest of Hibiscus lovers and our local members of the Treasure Coast Hibiscus Society.



Orchids, Orchids Galore • 10:15am - 11:15am

Presenters, Laurie Hart and Nan Rothschild are Master Gardeners and Orchid Addicts. They are active members of the Port St. Lucie Orchid Society and currently serve on the board of the Orchid Society. They have been collecting and growing orchids for 20 years and happily travel around the state to Orchid Shows and Rambles looking for new and unique orchids.

These very knowledgeable Orchid enthusiasts and aficionados will share valuable information on the basic care of Catleyas, Phalenopsis, Dendrobiums and Oncidiums. Be sure to attend this informative presentation!

(These workshops will be held in conjunction with the Orchids, Orchids & More Plant Sale)

Cost: PSLBG Members - **NO CHARGE** • Non-Members - **\$10**

Become an individual FPSLBG member for \$25 and you can attend the event **FREE!!**

CLICK HERE TO REGISTER

Keep Port St. Lucie Beautiful and St. Lucie County Master Gardeners

PRESENT

Give-a-Tree, Spread-the-Shade Tree Giveaway

September 17, 2016

7 to 10 a.m.



Port St. Lucie Botanical Gardens

2410 S.E. Westmoreland Blvd.



FREE BREAKFAST PROVIDED BY WALMART



In order to receive a tree, residents will be required to visit five out of seven educational booths. The trees being offered are easily grown in sunny Florida and have the ability to provide shade, food and homes to our native wildlife.

400 trees are given away to residents on a first-come, first-served basis and one per household.

For more information contact
Keep Port St. Lucie Beautiful:
772-873-6312; kpslb@cityofpsl.com



  "like" us on
facebook

**VISIT OUR
WEBSITE** 

JAZZ JAMS

AT THE GARDENS 

Wednesday

September 7th & 21st

6:30 - 9:30 pm

Presented By



Port St. Lucie

Botanical Gardens
Florida

**Saturday - September 24th
11:00 a.m. to Noon**

**Who says you need a backyard
to watch your garden grow?**

**Learn about growing a garden
in a bag and how to maintain it.**

Year round fun for the whole family.

**GARDEN
IN A BAG**

Please call 772.337.1959 to register.

*** FREE *
Ages 4-12
and Families**

The Incredible Edibles

HERBS, VEGETABLES & MORE PLANT SALE

Saturday - September 24, 2016
9am - 1pm



Please join us at the
Port St. Lucie
Botanical Gardens
for our plant
sale featuring

**THE
INCREDIBLE
EDIBLES:
HERBS,
VEGETABLES
& MORE.**



Horticulture How-To Series: **Growing Vegetables using Hydroponics**

Port St. Lucie Botanical Gardens

Saturday • September 24, 2016

9:30 - 10:30 am

In The Propagation Area

What You Will Learn:

- Introduction to Hydroponics
- Learn about Hydroponics Vertical containers that are self-contained
- Learn about the flood and drain system that uses a "Bell Syphon" that does not require any mechanical device.
- The Hydroponic Grow Bed
- The Liquid Fertilizer Tank



Dennis M. Grim: Dennis is the owner of Born Again Gardens LLC, and President of Synergy Education Research Farm, Inc. located in Fort Pierce, Florida. He provides education, design and installations of Vertical Container, Hydroponics and Aquaponics systems and farms. He graduated with highest honors from Indian River State College in 2012 with a Degree in Horticulture and Landscape Technology, and received the IRSC 2013 Associates Degree Academic Award. Dennis also received from IRSC a Technical diploma in Pest Control Operations, Landscape & Horticulture Professional Certificate, and recently a certificate in Aquaculture Technology. Dennis has taught numerous programs and seminars in Hydroponics and Aquaponics, S.T.E.M. program for school age children and recently co-taught a college credit course "Introduction to Aquaponics" through Indian River State College and Harbor Branch Oceanographic Institute. Previously Dennis was in the construction industry for over 30 years building and remodeling commercial and residential buildings. Now he uses his construction back ground to build growing systems and farms to provide fresh produce for the community.

This workshop will be held in conjunction with
The Incredible Edibles: Vegetables, Herbs & More Plant Sale

Cost: PSLBG Members - **NO CHARGE** • Non-Members - **\$10**

Become an individual FPSLBG member for \$25 and you can attend the event **FREE!!**

CLICK HERE TO REGISTER



Friends of the Port St. Lucie

Botanical Gardens

Florida

2410 SE Westmoreland Boulevard

Port Saint Lucie, FL 34952

772.337.1959

www.pslbotanicalgardens.org

2016

Board of Directors

Joleen King
President

Illona Christie
Vice President

Claire Clark
Secretary

Cheryl Mabry
Treasurer

Brenda Gustafson
Director

Gigi Norelli
Director

Kate O'Neill
Director

Jeff Policar
Director

Jennifer Scee
Director

Tim Sutton
Director

Attention: all Civic groups, garden societies, homeowners associations, local businesses, et al. Join the Friends of the Port St. Lucie Botanical Gardens this Halloween for a public "Trick or Treat" among the trees. We need your organization to join us in this fun hour and a half of welcoming the Ghouls and Goblins of Port St Lucie for trick or treating at the Gardens in a safe, controlled, no-cars atmosphere.



Trick or Treat Ramble in The Gardens
MONDAY • OCTOBER 31, 2016

Who's invited? Children, ages 0-13, in costume and their parents.
No admission - this is a free event.

What does your group have to do? Claim table space somewhere in the Gardens, set up a table, decorate as much as you'd like, staff your table with costumed volunteers who enjoy (and perhaps miss) the joy of Halloween and the costume parade we all remember from Halloweens past. And bring lots of candy! Your organization will be responsible for having sufficient candy, snacks or treats for the children.

Your area in the Garden is **FREE**. Your group must supply their own table. We have a limited supply of 8 ft. and 6 ft. tables available at \$10 each, first reserved, first served.

Are you an HOA, 55 and older? Miss seeing the children? Are you a City Department that would like to adopt a site to be manned by co-workers? A garden society of retired grandparents whose grandchildren are miles away, and are missed? Are you a local business that recognizes an opportunity for team building and community outreach? A civic group or club, looking for a fun, simple new event on your Fall calendar? This is an event for you!

Trick or treating will begin at 5:00 and end at 7:00 pm. Parents, accompanying their children will be required. No children without parents will be allowed on Garden property. Sunset on October 31st is 6:38 pm in Port St Lucie FYI. This is designed to be an evening/twilight event.

Please give this opportunity your attention; talk with friends and neighbors, decide to commit to this new Community event, and send us your commitment via email. Event will be advertised through the Gardens website & newsletter, on-line calendars, community radio and more.

For more Information or to register, please call the gardens at 772.337.1959.



S U P P O R T E R S

Royal Green

LANDSCAPE & PEST MGMT INC.

831 N.E. Dixie Hwy Jensen Beach Florida 34957

- * Rugose Spiraling White Fly Control
- * Interior Pest Control
- * Lawn, Tree & Shrub Fertilization
- * Disease Control
- * Insect & Weed Control
- * Fungus Control
- * Guaranteed Results
- * Locally Owned and Operated
- * Since 1996
- * Preventative Grub Control
- * Citrus & Palm Care
- * Commercial and Residential

* Licensed & Insured BMP State Certified Technicians

EXPERT LAWN, TREE
& SHRUB SPRAYING
(772) 334-1144

Free Inspection & Estimates
No Fine Print!!

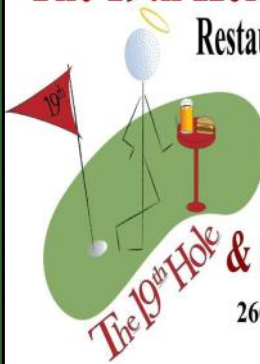
NEW CUSTOMER OFFER
\$30 CREDIT
To Redeem Mention This AD

Visit our new website:
www.RoyalGreenLandscapesandPest.com



The 19th Hole at the Saints

Restaurant & Banquet Hall



772-337-0180

Carl Bussett/Rick Aslin
Proprietors

& Sandpiper Room

2601 SE Morningside Blvd.
Port St. Lucie, FL 34952



Making You & Your business Look Great

772.801.8800

Mark@MarkBarnesMusic.com

Business Card Designs
Logo Designs
Graphic Designs
Specialty Cards
Real Estate Ads & Designs
Video Home Tours
Basic Web Sites
Copyright Services
ASCAP & Music Site Setup
QR Code Design
Video Bios and Resumes
Power Point Presentations
Virtual Assistant
Real Estate Services

RECREATION: (772) 807-4499 HOSPITALITY: (772) 807-4488

HUMANA FITNESS & WELLNESS CENTER: (772) 204-7101

Weekly Outdoor Market • Banquet Facilities
Membership Specials • Special Events



Port St. Lucie

Civic Center

Where the Research Coast Meets

9221 S.E. CIVIC CENTER PL
PORT ST. LUCIE, FL 34952

Say I Do - Wedding Ceremonies

www.maureendavisweddingofficiantllc.com

Maureen Davis * Wedding Officiant
Port Saint Lucie, Florida

772-323-0945 (c) 772-985-7946



Beach Weddings a Specialty

Maureen Ahern Davis
ipronounceu@gmail.com



Southern Branch, Inc.

Certified Arborist & Tree Care

Jamey Liddell

UT4358-A

239.229.7657

JAMEYLIDDELL@GMAIL.COM

Fully Licensed and insured



THE SAINTS

At Port St. Lucie Golf Course

www.CityofPSL.com/Golf

2601 SE Morningside Blvd. • (772) 398-2901
Port St. Lucie, FL 34952 • Fax: (772) 398-2778

PORT ST. LUCIE
PARKS & RECREATION



**BETH GRADY
REALTOR®**



**SWEET LIFE
REALTY GROUP**

718 SW PORT ST LUCIE BLVD #4
PORT ST LUCIE, FL 34953

DIRECT

772.361.1447

E-MAIL

BETH@SWEETLIFEREALTY.COM

"Home values have increased, call me
today for a free market evaluation."

The service you deserve, the lifestyle you desire...

EXPERIENCE COUNTS - AND SAVINGS ADD UP

Find out about the **Competitive Rates** and **Special Benefits** available
through the AARP® Auto Insurance Program from The Hartford.

Ready to learn more? Contact our agency now:

POST INSURANCE



SEE HOW MUCH YOU COULD SAVE!
Call today for your **FREE**, no-obligation quote:

772-878-8184

POST INSURANCE

146 NW Central Park Plaza, Suite 102
Port St. Lucie, FL, 34986

info@insurewithpost.com
www.InsureWithPost.com



Welcome to All Garden Goers...

This month our
Jazz Jams will be held on
September 7th
& September 21st
starting at 6:30 pm

**JAZZ
JAMS**

At The Gardens

Donation \$5 per person.
Gardens & Jazz Society
Members \$4 per person.

**Sponsored by the
Fort Pierce Jazz & Blues Society**

Advertise With Us

**Contact Mark Barnes
at 772.801.8800 or e-mail
NEWS@PSLBOTANICALGARDENS.ORG**