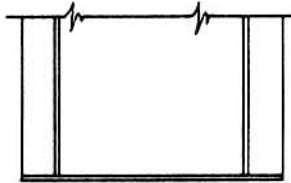


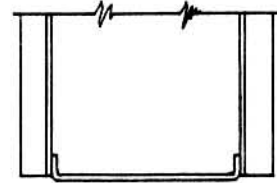
INSTALLATION OF FA279 LOCKING LATCH KIT

FOR MODELS: 28HR, FP28H, DTO28H, PT20H, WABU & JBBU

NOTE: This kit can only be installed on Two Post Rigid Equalized Lifts manufactured after February 1967. Equalizer housings on these models had formed end panels. See Sketch A & B for details.



Sketch A
Before Feb. '67



Sketch B
After Feb. '67

1. Remove housing cover(s). Raise lift to full rise, insert manual pins or two rods, disconnect frame and remove to work area where drilling and welding can be performed.
2. Measure from top plate on each beam, see Fig. 1 and hole locating chart for proper hole location. Layout hole pattern per Fig. 2 on outside flanges of beams. Using square layout hole for 5/8" dia. hole for inside beam flange. Drill 25/64" dia. hole thru (1) flange.

HOLE LOCATING CHART

59 3/4" — WABU, JBBU & 28HR — 60" Rise
65 3/4" — DTO, FP28 & PT20 — 68" Rise
67 3/4" — DTO & FP28 — 70" Rise

3. After drilling holes in both beams, clean beams and de-burr holes.

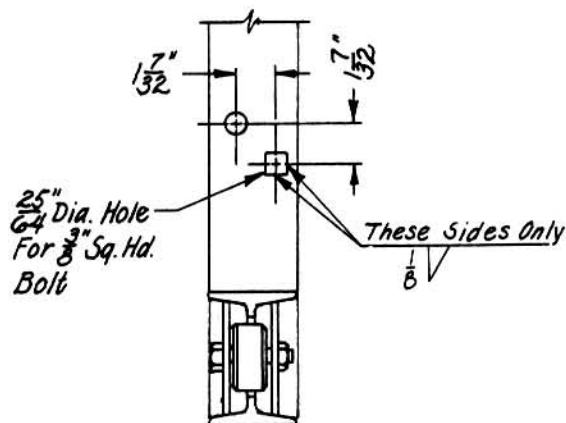


FIGURE 2

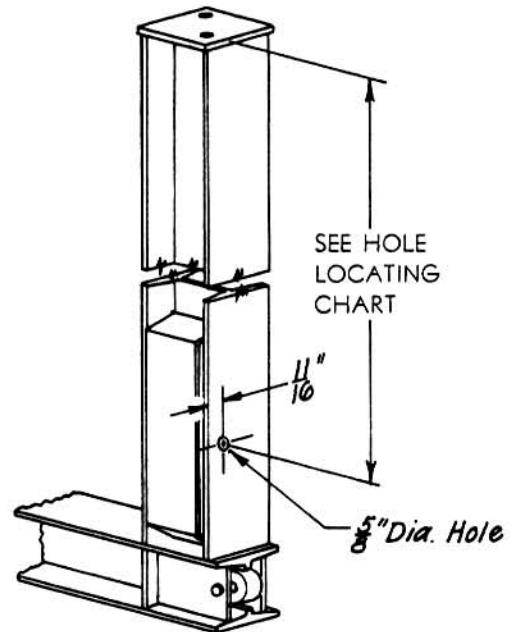


FIGURE 1

4. Install shaft and latch in beam per Fig. 3 & 4. Allow .015" total clearance between latch and beam. Plug weld shaft to beam flush on inside beam flange, see Fig. 3.
5. Install 3/8" Square Head Bolt, and tack weld to beam. See Fig. 3 & 4.
6. Stand frame upright, normal position, latch must rotate freely.

Rotary parts are stocked by Rotary Parts Depots throughout the United States

Use Genuine Rotary Parts for Safety—Low Cost

INSTALLATION OF FA279 LOCKING LATCH KIT

FOR MODELS: 28HR, FP28H, DTO28H, PT20H, WABU & JBBU

7. Remove weld slag and flux. Repaint repair area. DO NOT paint latch or beam flange under latch as paint may foul latch.
8. For smooth lift operation, it is important that the rollers on the lower corners of the equalizer frame be adjusted out equal amounts & 1/16" less than the inside width of the equalizer housing. This adjustment, if required, should be made before the equalizer frame is reinstalled. After adjustments, tighten roller retainer bolts to 50 ft. lbs. torque. Rollers must turn freely.
9. Replace frame in housing, Fig. 4. Bolt frame to yoke. Check to be sure frame is centered, fore & aft in housing. If not, loosen and shim between plate & yoke. Retighten bolts to 50 ft. lbs. torque.

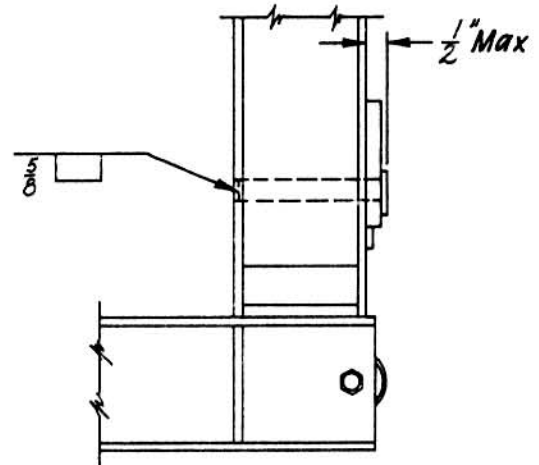


FIGURE 3

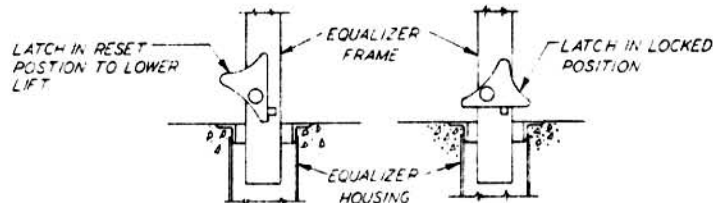


FIGURE 4

OPERATION. Latches automatically rotate to lock position at full rise. To lower lift: raise lift to full rise, rotate to reset position.

MAINTENANCE: Periodically lubricate latch and pins.

MATERIAL LIST

DESCRIPTION	PART NO.	QTY.
Locking Latches	FJ37-1	2
Support Pin		2
3/8" - N.C. Square Head Cap Screw x 1/2" Lg.		2

Rotary parts are stocked by Rotary Parts Depots throughout the United States

Use Genuine Rotary Parts for Safety—Low Cost

DOVER CORPORATION / ROTARY LIFT DIVISION
MEMPHIS TENNESSE 38130

FILE INDEX 12.3