

Maggie Stern Stitches

Mini masterpieces

Available as wearable art badges or framed in miniature black frames

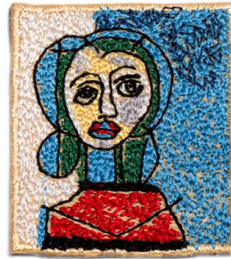
Mini masterpiece wearable art badges range in size from 1-1/2" square to 1-1/2" wide x 2" tall



Modigliani



da Vinci



Picasso



Matisse still life



Frames are either 2-1/2" square or 2" x 3"



Vermeer



Matisse woman



Rembrandt



Van Gogh



Chagall



Klee

Each wearable Mini masterpiece art badge has a safety clasp pin back

Original designs machine-embroidered on woven backing in Easton, MA.

Photographs by Joe Ofria