

Synology®

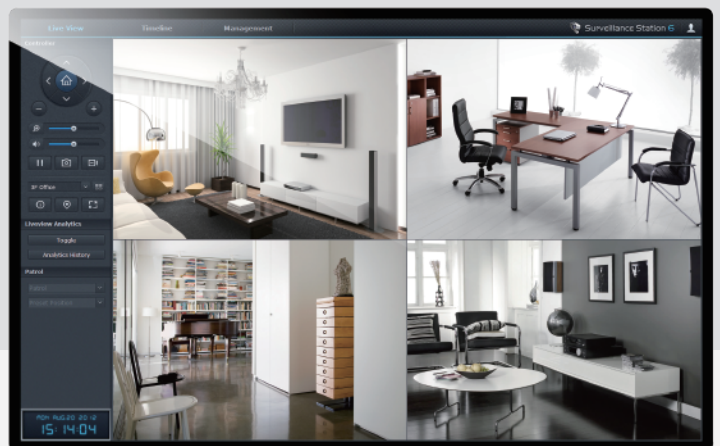
Command

Analyze

Record

Surveillance Station

The Synology NVR solution designed to offer the best surveillance experience



The Optimized NVR System to Ensure All-around Security

The goal of Surveillance Station is to deliver sophisticated security solutions through user-friendly management tools. From small to large scale, you can safeguard valuable assets with the versatile and intelligent monitoring tools. Surveillance Station can meet your deployment requirement and surveillance needs.

● Live View

Whether it's on Mac or PC, you can always monitor live happenings via Internet connection. Watch live view feeds on all major browsers – Firefox®, Google Chrome™, Internet Explorer®, & Safari®.

Concurrent Live View

Concurrent Live View

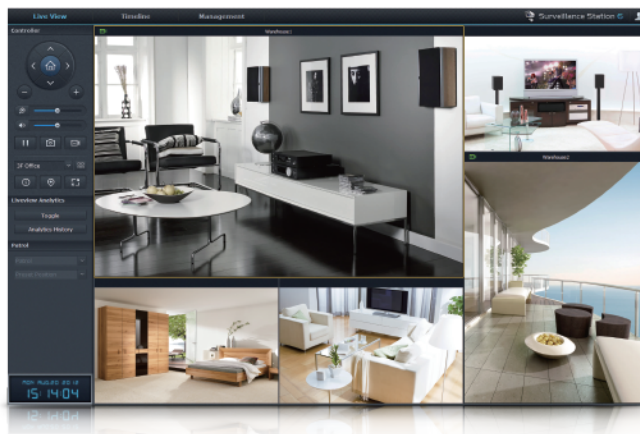
View up to 49 channels. Stream live feed from cameras hosted on different DiskStations and monitor on one single interface.

Flexible Layout

Optimize Live View layout to fit different camera resolution for the best monitoring experience.

Versatile Support

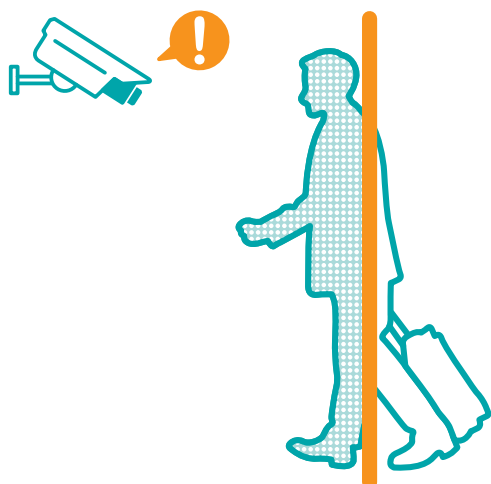
Install fisheye cameras for 360° monitoring; PTZ & snapshot are supported; E-map allows an overview of IP cam deployment.



Live View Analytics

Tally Counter

A single digit will be added to the linear count when an object crosses a predefined boundary.



Virtual Fence

An alert will be sent to you whenever an object goes beyond the virtual predefined border.

No-Idle Zone

Any object that stays in the no-idle zone over a set duration will trigger an instant alert.

More Useful Analytics

When there's motion detected, any object being removed or emerged, a focus lost or lens block of the IP cameras, you will receive immediate alerts. Nothing can go unnoticed.

Patrol Route

IP cam can move alongside preset positions to form a patrol route. Patrol action and recording can be scheduled to trigger when events occur.

● Event Management

Using Surveillance Station's interface, you can easily manage and browse through your library of recorded events. With the provided tools, you can call up any event with just a few clicks.

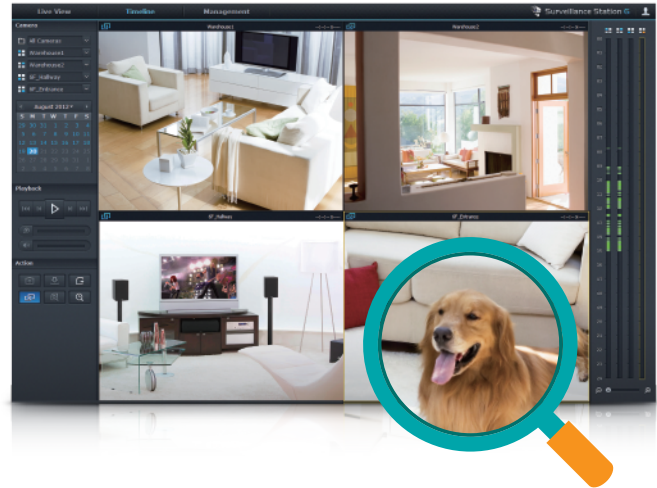
View Events

Event Playback

Use Sync mode to view all events with a single timeline and Non-Sync mode to eliminate the gaps between each recording, while Time Slice mode lets you split one event into 4 segments so playback can be more efficient.

Image Enhancement

You can adjust image attributes like brightness, saturation, contrast and sharpness to help you see images clearer. It works under Smart Search, too.



Archive & Authentication

Recorded events can be exported to archive for later review. The Evidence Integrity Authenticator can ensure the originality of videos to be legally admissible in court.

Smart Search

Smart Search offers 8 search modes to automatically track down targets during event playback – with customizable features like detection zone, object size and more.

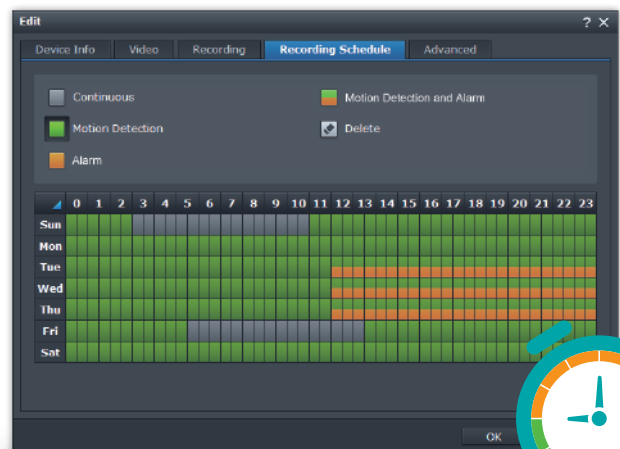
● Recording

Schedule & Archive

Create and customize a 24/7 recording schedule with different types of recording modes. The Archive Rotation system prevents past events from filling up storage space.

Versatile Recording Modes

Set up recording schedule that fits in the monitoring needs. You can choose modes such as Manual, Continuous, Motion Detection, Alarm, and Alarm with Motion Detection.



● Camera Management

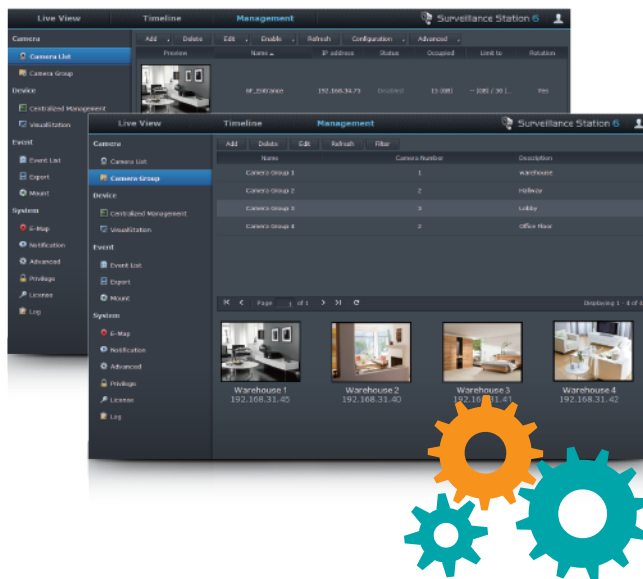
Whether it's for a single camera or for large-scale deployment, Surveillance Station offers versatile tools to help you manage IP camera settings efficiently.

Versatile Support

Choose between 1,200 cameras from well-known brands. In-depth integration with selected vendors, grants more options to customize your camera settings.

Notification

Receive alert notifications to respond to events in time. Notifications can be sent via SMS, email, Skype®, Windows Live™ Messenger, or push notification on mobile devices.



Camera Customization

Camera Optimization

IT managers can edit advanced settings for individual cameras directly on Surveillance Station, including video orientation, exposure mode, OSD overlap and more*.

Web API Integration

3rd-party developers and system integrators can easily integrate the Surveillance Station Web API with existing security system for a more complete and safer experience.

Easy and Comprehensive Deployment

CMS

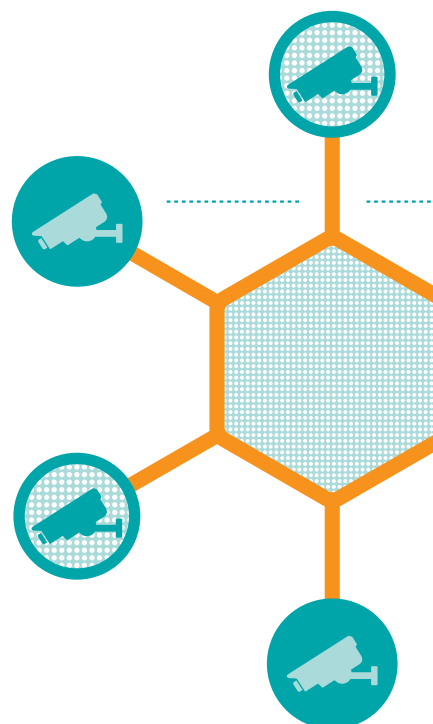
Centralize live feeds from multiple DiskStation and view from a single screen. It's ideal for surveillance coverage that extends to a number of different sites.

Batch Installation & Edit

Cameras of the same model can be installed at once. You can also group selected cameras so any edits made to the group can be applied universally.

Privilege & Security

Assign full-access privilege to administrators or "view-only" privilege to spectators. Surveillance Station is secured with SSL/TLS encryption and HTTPS support.



*Camera optimization is only available when the features are supported by cameras of selected brands. For more information please visit www.synology.com.

The Best Accessory & App That Make Surveillance Station Even More Powerful

In addition to Surveillance Station's robust features, you can also enjoy other useful tools from Synology's NVR solution. Whether you are looking to set up a monitoring station for your company's front desk or watch live feeds on mobile device, it can all be done in the most economical and intuitive way.

● VisualStation VS240HD

Light-weight, power saving & easy to use monitoring solution for office front desks and building security.

Surveillance Companion

Designed to work alongside Surveillance Station, VS240HD offers a cost effective way to monitor live view and watch recorded events without connecting to a PC.

Exceptional Surveillance Quality

With HDMI support, the VS240HD can stream up to 24 live view channels concurrently with 720p HD video quality to bring you the best viewing experience.



● Mobile

Mobile Surveillance

With DS cam, you can watch live view, playback events, take snapshot and perform PTZ actions right on your mobile device.

Push Notifications

DS cam lets you receive instant notifications right on your mobile device. There are a total of 9 events that can trigger the alert so you won't miss anything important.



Synology®



Synology Inc.
3F-3, No. 106,
Chang An W. Rd., Taipei,
Taiwan
Tel: +886 2 2552 1814

Synology America Corp.
13343 NE Bel-Red Road,
Bellevue, WA 98005,
USA
Tel: +1 425 818 1587

Synology France
9 rue Benoît Malon,
92150 Suresnes,
France
Tel: +33 1 46 14 87 73

Synology GmbH
Königsallee 92a,
40212 Düsseldorf,
Deutschland
Tel: +49 0211 5403 9658

Synology UK Ltd.
Etheridge Avenue,
Brinklow, Milton Keynes,
MK10 0BP, UK
Tel: +44 1908 587422