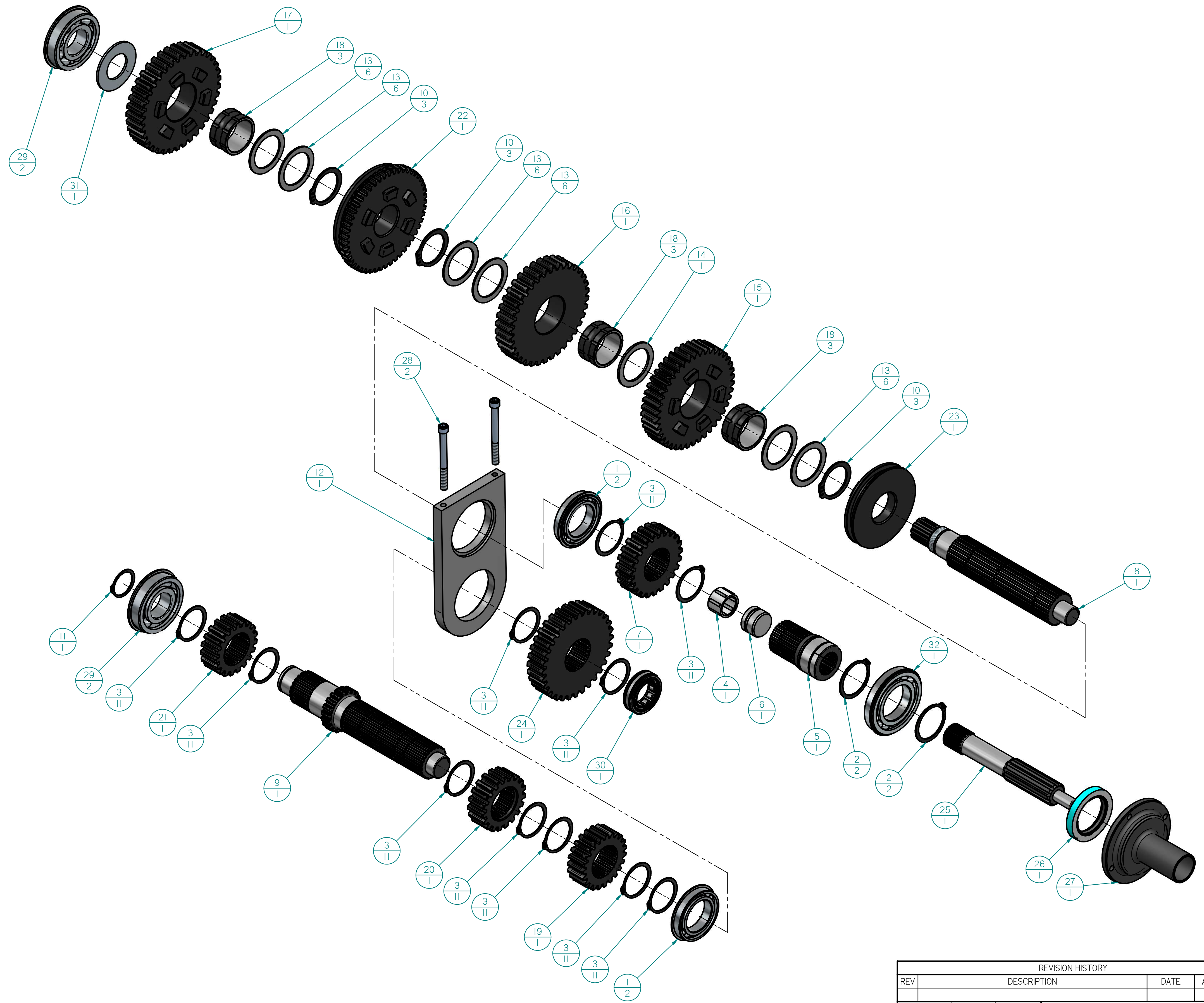


| Item Number | Title  | Document Number | Quantity |
|-------------|--|-----------------|----------|
| 1           | BEARING  | 6010NRJ         | 2        |
| 2           | 2.15 INCH SNAP RING                                  | SH-215-ST       | 2        |
| 3           | 2 INCH SNAP RING                                     | SH-200-ST       | 11       |
| 4           | BEARING  | WJ-182416       | 1        |
| 5           | DRIVEN INPUT SHAFT                                   | 40010           | 1        |
| 6           | DRIVEN INPUT SHAFT PLUG                              | 40010           | 1        |
| 7           | HEADSET GEAR   | HEATSET GEAR    | 1        |
| 8           | MAIN SHAFT 4WD                                       | 40012           | 1        |
| 9           | COUNTER SHAFT  | 40011           | 1        |
| 10          | 2 INCH HD SNAP RING                                  | JD T14931       | 3        |
| 11          | 1.56 INCH SNAP RING                                  | SH-156-ST       | 1        |
| 12          | BEARING SUPPORT PLATE                                | 40021           | 1        |
| 13          | SPACER   | TRC 3244        | 6        |
| 14          | SPACER   | TRD3244         | 1        |
| 15          | 42 TOOTH DRIVEN GEAR                                 | 40042           | 1        |
| 16          | 36 TOOTH DRIVEN GEAR                                 | 40036           | 1        |
| 17          | 37 TOOTH DRIVEN GEAR                                 | 40037           | 1        |
| 18          | BUSHING  | 3932274         | 3        |
| 19          | 23 TOOTH DRIVE GEAR                                  | 40023           | 1        |
| 20          | 19 TOOTH DRIVE GEAR                                  | 40019B          | 1        |
| 21          | 19 TOOTH DRIVE GEAR 19-37                            | 40019           | 1        |
| 22          | REVERSE CLUTCH GEAR                                  | 40050           | 1        |
| 23          | HIGH GEAR COUPLER                                    | 40051           | 1        |
| 24          | HEAD SET GEAR  | HEADSET GEAR    | 1        |
| 25          | INPUT SHAFT 8.125                                    | 18004           | 1        |
| 26          | SEAL   | 21538           | 1        |
| 27          | SNOUT 1.75   | 40052           | 1        |
| 28          | 3/8-16 x 4" Hexagon socket head cap screw ANSI B18.3 |                 | 2        |
| 29          | BEARING  | 6308NRJ         | 2        |
| 30          | BEARING  | M1305GGTVI      | 1        |
| 31          | SHIM   | STOCK SHIM      | 1        |
| 32          | BEARING  | N211-NRJ        | 1        |



| REVISION HISTORY |             |      |          |
|------------------|-------------|------|----------|
| REV              | DESCRIPTION | DATE | APPROVED |
|                  |             |      |          |
|                  |             |      |          |

|          |    |      |          |  |
|----------|----|------|----------|--|
| DRAWN    | BN | DATE | 07/29/15 | <b>PROFAB MACHINE INC</b><br>TITLE<br><b>MUNCIE 465 4WD ASSM</b> |
| CHECKED  |    |      |          |  |
| ENG APPR |    |      |          |  |
| MGR APPR |    |      |          |  |

|  |     |
|--|-----|
| MATERIAL   |     |
| FINISH   | N/A |
| PROPRIETARY AND CONFIDENTIAL<br>THE INFORMATION CONTAINED IN THIS DRAWING IS THE SOLE PROPERTY OF PROFAB MACHINE INC. ANY REPRODUCTION IN PART OR AS A WHOLE WITHOUT THE WRITTEN PERMISSION OF PROFAB MACHINE INC IS PROHIBITED. |     |

|  |                               |                 |
|--|-------------------------------|-----------------|
| UNLESS OTHERWISE SPECIFIED<br>DIMENSIONS ARE IN INCHES<br>3 PL ±0.001 4 PL ±0.0005 | SIZE DWG NO<br><b>D 40000</b> | REV<br><b>1</b> |
| SCALE: 1:3   | WEIGHT: 0.000 lbr             | SHEET 1 OF 1    |