

Application Data Sheet – TDI 80% mix (TDI 2.4 80% / TDI 2.6 20%)

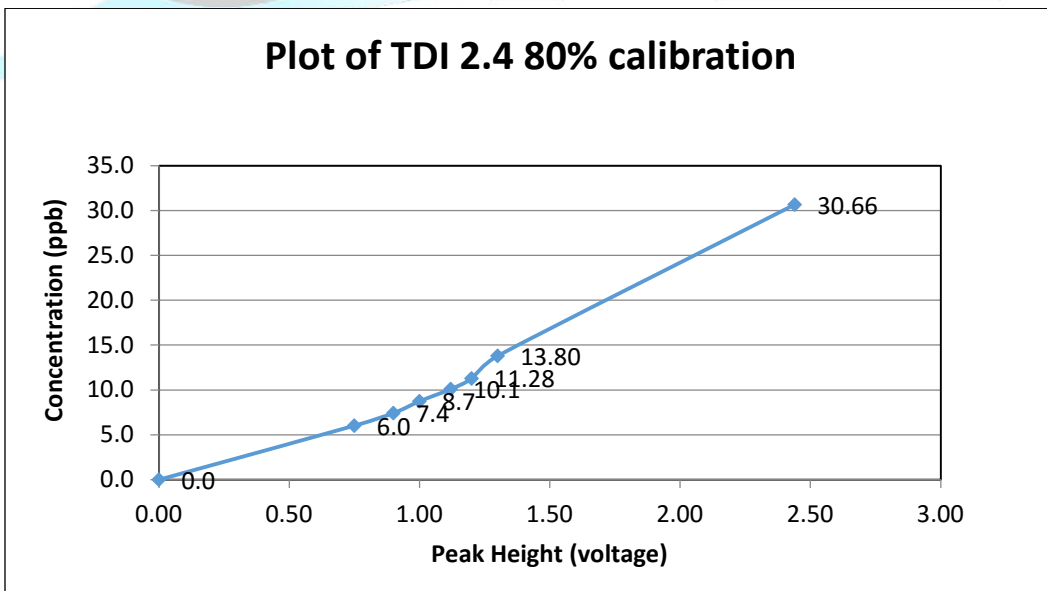


The STEP IMS system is able to baseline separate TDI 2.4 and TDI 2.6 in low PPB range of the standard TDI80 mixture in ambient air. Due to the special designed short path direct flooded Teflon inlet and ceramic Teflon cell the STEP IMS is much faster and more reliable analyzer. The separation for TDI 2.6 (1.53ms drift time) and the TDI 2.4 (1.68ms drift time) is a baseline separation of both compounds and allows the STEP IMS to be used for quality control as well as for environmental safety monitoring for TDI80%

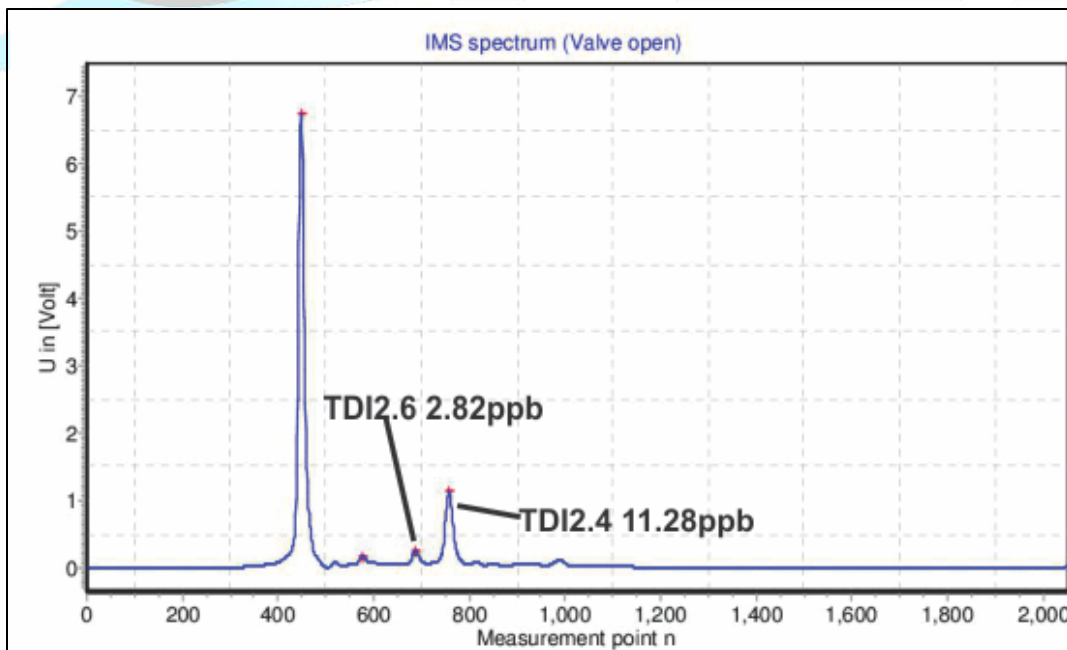
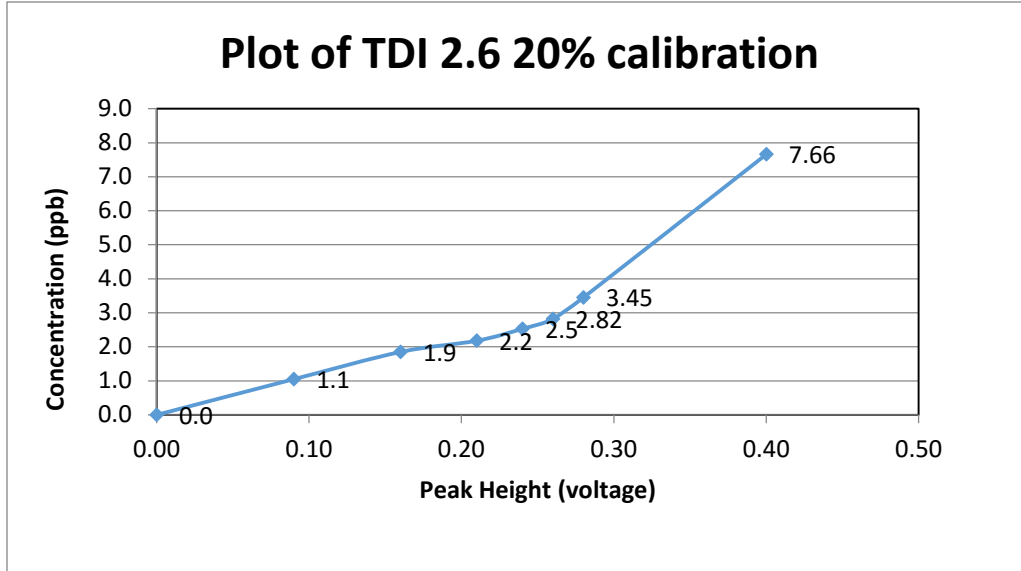


Example calibration TDI 2.4 80%

Plot of TDI 2.4 80% calibration



Example calibration TDI 2.6 20%



Plot of TDI 2.4 and 2.6 mixture (80%/20%)