

WHAT'S THE DIFFERENCE?

Parent Teacher Association (PTA) & Wiseburn Education Foundation (WEF)

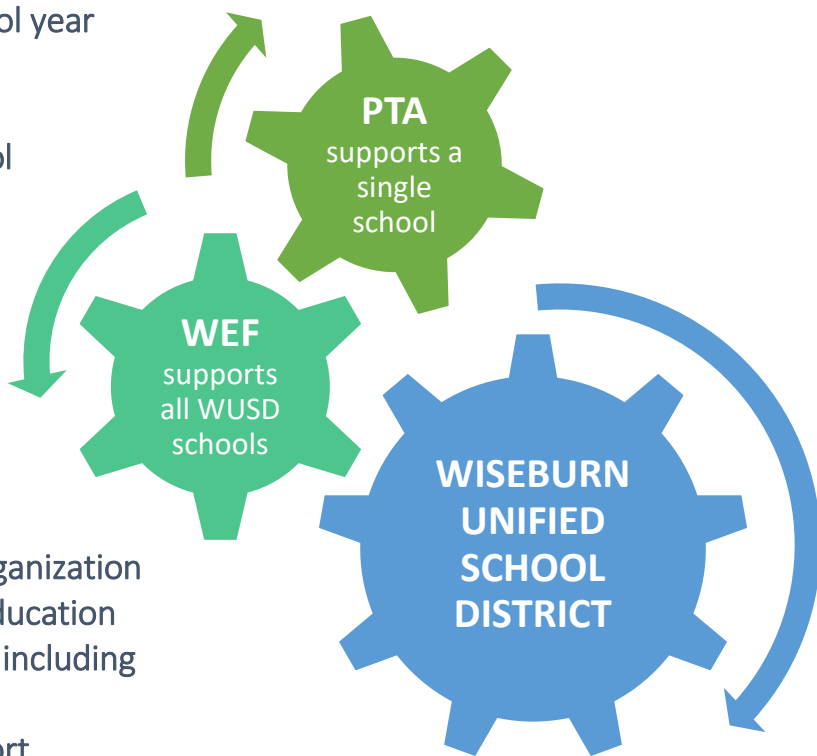


- National organization engaging and empowering families and school communities to advocate for all children
- Individual PTA unit focuses on current school year funding priorities
- Funds raised address site specific needs
- Organizes volunteers and activities at school
- Works directly with school administrators

Parents often ask for clarification between the organizations and why are two organizations needed.



- Wiseburn community-based fundraising organization
- Conducts long range planning to support education
- Raises funds for short and long-term needs including teacher salaries
- Generates corporate and community support
- Focuses on District-wide programs and events that support all WUSD schools



**WELL EDUCATED, COLLEGE BOUND,
COMMUNITY FOCUSED STUDENTS!**

THE BOTTOM LINE

Both organizations are here to support your child. California state funding for public schools is 44th in the Nation. We need your investment in our public schools to maintain quality public education and meet the needs of all Wiseburn students. Together we build better schools, brighter futures and a stronger community!