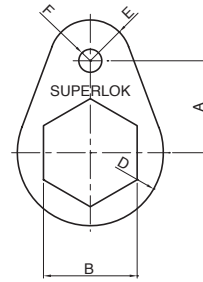


SBR Bulkhead Retainer



Part No.	A (inch)	B (inch)	C (inch)	D Dia (inch)	E Dia (inch)	F Dia (inch)
SBHU 1-RE	3/8	5/16	1/8	5/16	5/32	5/32
SBHU 2-RE	1/2	1/2	1/8	13/32	7/32	5/32
SBHU 3-RE ①	9/16	9/16	1/8	15/32	1/4	5/32
SBHU 4-RE ②	5/8	5/8	1/8	1/2	9/32	5/32
SBHU 5-RE	1/16	11/16	1/8	9/16	5/16	5/32
SBHU 6-RE	3/4	3/4	1/8	5/8	11/32	5/32
SBHU 8-RE ③	15/16	15/16	1/8	3/4	13/32	7/32
SBHU 10-RE ④	1	1-1/16	1/8	13/16	13/32	7/32
SBHU 12-RE ⑤	1-1/16	1-3/16	1/8	29/32	15/32	7/32
SBHU 14-RE	1-1/8	1-5/16	1/8	1-1/32	17/32	7/32
SBHU 16-RE	1-9/32	1-5/8	1/8	1-5/32	9/16	7/32
SBHU 8M-RE	11/16	18 mm	1/8	9/16	5/16	5/32
SBHU 10M-RE	15/16	22 mm	1/8	3/4	13/32	7/32

- ① Can be used with 3mm and 4mm bulkheads
- ② Can be used with 6mm bulkheads
- ③ Can be used with 12mm bulkheads
- ④ Can be used with 15mm and 16mm bulkheads
- ⑤ Can be used with 18mm bulkheads

• All dimensions in millimeters unless specified as "inch". Dimension are for reference only, subject to change