

Buckingham[®] Collection

Collection Overview

Buckingham® Collection Overview

Buckingham® Collection



R E D E F I N I N G

Luxury

The Buckingham Collection is a celebration of the finest traditions in American hand crafting.

Each piece begins as an exquisite, hand-cut jewel, and then is expertly cast from its original master carving.

Artists then brush, burnish and distress each piece by hand with meticulous attention to detail. Making each beautiful Kirsch finish a one of a kind treasure.

This cleverly curated collection presents a variety of designs from modern simplicity to classically ornate.

Custom program ships in 7-10 business days.

\$200 Three Day Production Rush Now Available

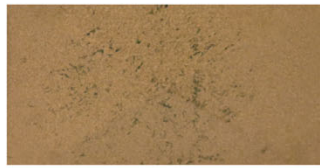
Buckingham® Collection

- Great for Stationary Draperies & Traversing Draperies
 - Rod Pocket
 - Tab Top
 - Tie Top
 - Grommet
 - Pleated
 - Ripplefold™



Buckingham® Collection

- Fifteen hand crafted finishes.



Aged Gold



Black Gold



Camden



Castle Rock



Cottage White



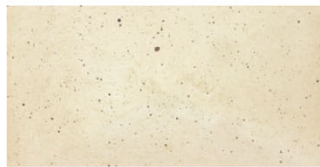
Dark Walnut



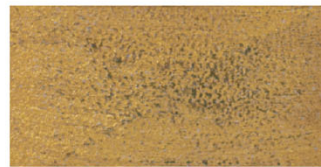
Distressed Oak



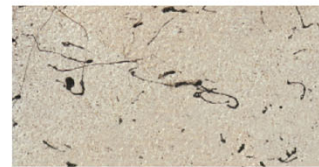
Moonglow



Old World White



Ornate



Shimmer



Slate



Sterling



Venetian



Winterwood

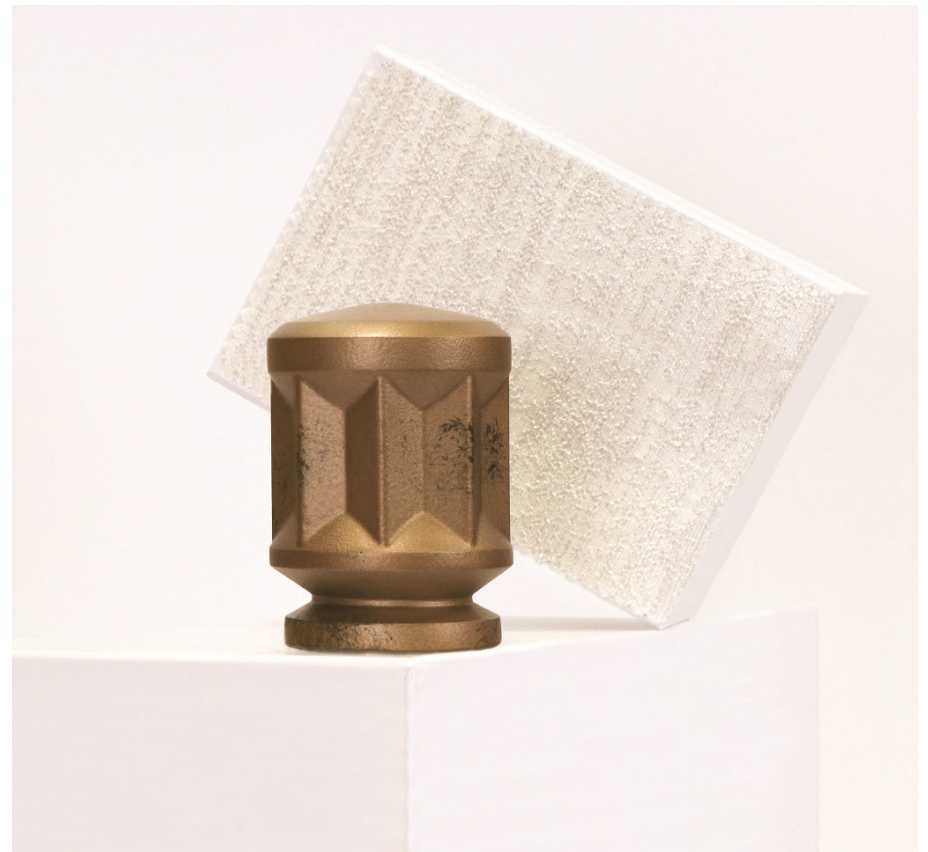
Buckingham® Collection

- Sixteen 1 3/8", 2" & 3" finials and endcaps



Aston in Moonglow & Stamford in Distressed Oak

Carrington in Aged Gold



Buckingham® Collection



Davenport in Camden & Hamilton in Slate



Harper in Sterling



Larkin in Cottage White

Buckingham® Collection



Twisted Ball in Distressed Oak, Concord in Venetian, Wood Ball in Castle Rock & Oxford in Sterling

Buckingham® Collection



Cross Geometric in Camden



Regal in Winterwood

Buckingham® Collection



Windsor in Slate



Berkshire in Winterwood

Fluted Endcap in Cottage White



Buckingham® Collection

- Estate™ Traverse Rods
 - Available diameters 1 3/8" & 2"
 - Heavy duty weight bearing track
 - Custom lengths to the nearest 1/8"
 - Cord, Hand/ Baton, Baton Duplex or Kirsch with AMP™ Motorization Operating Methods
 - Two configuration choices
 - Pleated
 - 16mm ball bearing carriers/ slides with three holes for easy pin adjustment and color coordinated
 - Ripplefold™
 - Two sided color coordinated pendants and color coordinated carriers



Buckingham® Collection

- All Estate Traverse rods use color coordinating components to allow for a more design friendly application.
 - Cords, tension devices, carriers and track are all color coordinated.



Buckingham® Collection



- Three stationary pole diameters
 - 1 3/8", 2" and 3" Smooth
 - 2" Fluted
 - Allows for versatility to fit any size window no matter the scale of the room
 - Multiple pole diameters allow for finish consistency between large & small windows
 - All pole diameters are available in all finishes
- Four stationary pole lengths
 - 4 ft, 6 ft, 8 ft and 12 ft
 - Poles can be cut down with fine tooth saw or spliced using pole connector (item # 5610E061)

Buckingham® Collection

- Stationary Pole Brackets
 - Transitional Bracket
 - Available in all three sizes
 - 1 3/8" Brackets
 - 3 1/2" or 6" Returns
 - 2" Brackets
 - 3 1/2" or 6" Returns
 - 3" Brackets
 - 4 1/2" or 6" Returns



Buckingham® Collection

- Stationary Pole Accessories
 - Transitional Ring
 - Standard Ring
 - Fluted or Smooth



Buckingham® Collection

- Four Decorative Holdbacks.



Benson in Distressed Oak, Harper in Venetian, Davenport in Slate, Larkin in Camden



@kirsch

Experience more, visit kirsch.com