

Starting Right In Beekeeping

Kristi Sanderson



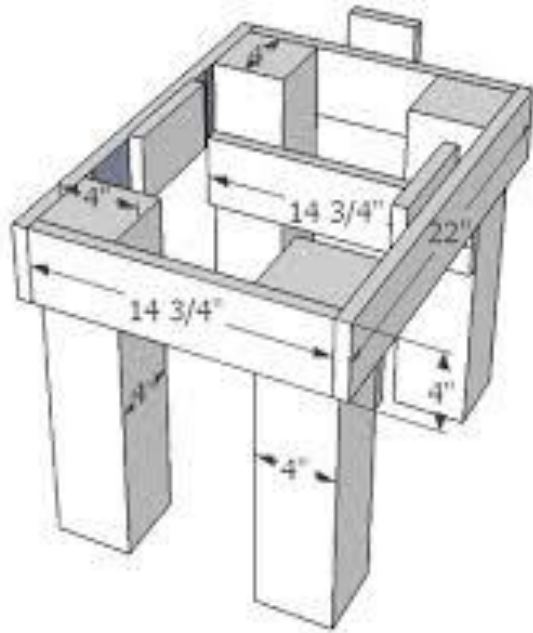
2025

Equipment Needed to Start

- Use standard Langstroth equipment
 - Hive stand
 - Bottom board
 - Hive body with 10 frames & foundation
 - Inner cover
 - Top cover
 - Feeder



Hive Stand



Bottom Board and Entrance Reducer



Hive Body, Frames and Foundation



Assembling Frames



Queen Excluder and Honey Super



Inner Cover and Top Cover



Feeders



The Rock On Top



Tools Needed

- Smoker
- Hive tool
- Bee brush



Protective Clothing



Hive Stands Dos And Don'ts



Ways to Acquire Bees

Package Bees

Nucs

Swarms



Swarms

- Free bees
- Unpredictable
 - Will you find one
 - How high is it
 - Unknown age of queen
 - Mite treatments needed?



Nucs

- Small established hive with laying queen
- Easy to install into your equipment
- 4-5 frames with queen, bees, brood of all ages and food
- Used frames and combs
- You are buying potential diseases of the parent hive
 - Ask what and when mite treatments were done



When Buying A Nuc Know

- What are you buying
 - How many frames
 - How many are brood
 - Age of the queen
- Have they treated for mites
 - What and when
- Where to buy
 - Look for a local reputable beekeeper
 - Ask for input from other good standing beekeepers
 - Don't buy from someone just passing through area



Installing Nuc in Your Hive

- Move frames from nuc box into your hive
- Place frames in center of brood box
- Look for queen while transferring frames
- Evaluate brood while transferring frames
 - Eggs, larva, sealed brood
- Start feeding right away



Continued Care of Nuc

- Place the frames in center of hive body and start feeding for optimum growth
- Move outside frames in on lower hive body once 7-8 frames are drawn out and then add 2nd hive body
- Continue feeding and doing inspections until supers are added



Buying Package Bees

- Buy from local supplier if possible
- Notify carrier if by mail order
- Fill out damage claim if excessive die off



When To Notify Your Supplier



Before Your Package Bees Arrive

Be prepared

- Equipment
 - Assembled
 - Painted
- Location
- Feed



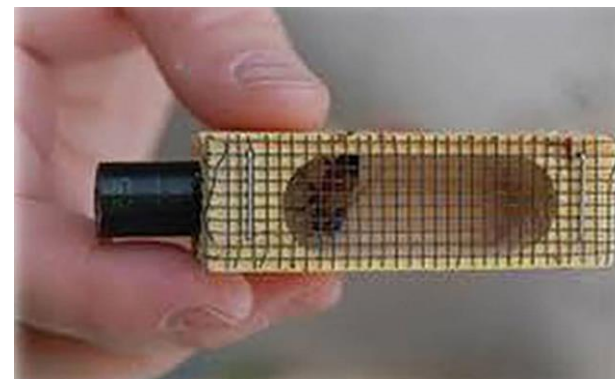
Care of Package

- Install ASAP
- No direct sun
- Keep cool
- Feed if needed



Queen Cage Styles

DO NOT PUNCTURE CANDY OR INSERT A MARSHMALLOW!

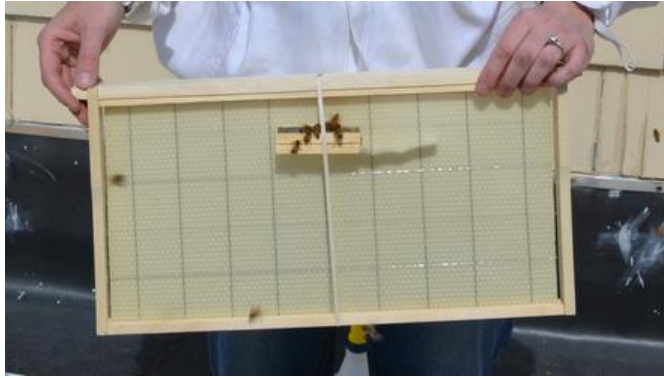


Check the Queen

Make sure she's alive and undamaged



Queen Placement



Shaking Into the Hive

- Spray with sugar syrup
- No smoke needed



No shake Method

- Works great on a windy day
- Helps prevent drifting when installing several packages
- Requires a 2nd visit next day for removal of package and placement of remaining frames



Cold Weather Installation



Positioning of Queen



Queen Positioned Above Bees



Food as Close as Possible

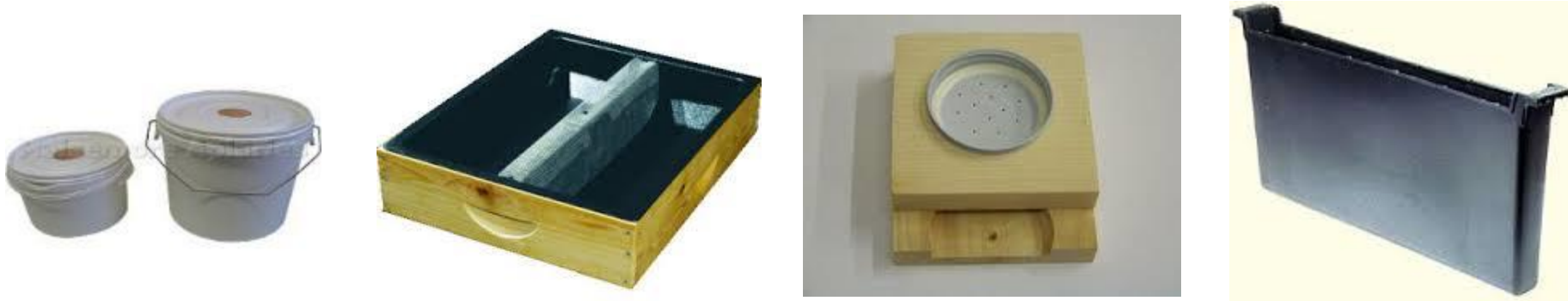


Reduce to One Hive Body



Start Feeding Immediately

- 1:1 white sugar and water by weight
- Heat water to near boiling
- Stir in sugar to dissolve --do not boil
- Cool before feeding
- Discard if syrup becomes moldy or fermented
- May feed high-fructose corn syrup



Why Feed?

- Improves queen acceptance
- Quick way to add food stores
- Stimulates queen to lay
- Stimulates nest cleaning
- Aids bees in comb building



Release Queen

- Wait 3-4 days
- Inspect queen before releasing



First Inspection

Wait 5-7 days & look for eggs



After Every Inspection



1



2



3

Continued Inspections

- Add 2nd box after 7-8 frames drawn out
- Brood will start emerging after 21 days



Frame Manipulation



1



2



3

How Often to Inspect and What to Look For

- Inspect every 7- 10 days
- Is the colony queen right
- All stages of brood including eggs
- How many drawn out frames
- How many frames of food (pollen and honey)
- Evidence of swarm activity



When To Add honey Supers

- When 2nd hive body has 8 frames built out into comb
- Add 1 super at a time when starting with foundation
- Stop feeding sugar syrup immediately
- Place queen excluder on the top of brood boxes



Keep Records

- Date of inspection
- Number of brood frames
- Frames with honey/pollen
- Queen presence?
- Are eggs present?
- Anything unusual
- Make distinctions between hives



What to Look for in a Mentor

- Find a successful beekeeper with 5 plus years of good beekeeping practices
- Find someone who keeps up to date with new university based research



Questions

Kristi Sanderson
Sweet Prairie Honey
Honey Bee Mentoring Service
Call or Text 913-768-4961
sandersonk09@gmail.com



Equipment Needed as Season Progresses

- 2nd hive body with 10 frames and foundation
- Queen excluder
- Honey super with 10 frames and foundation

