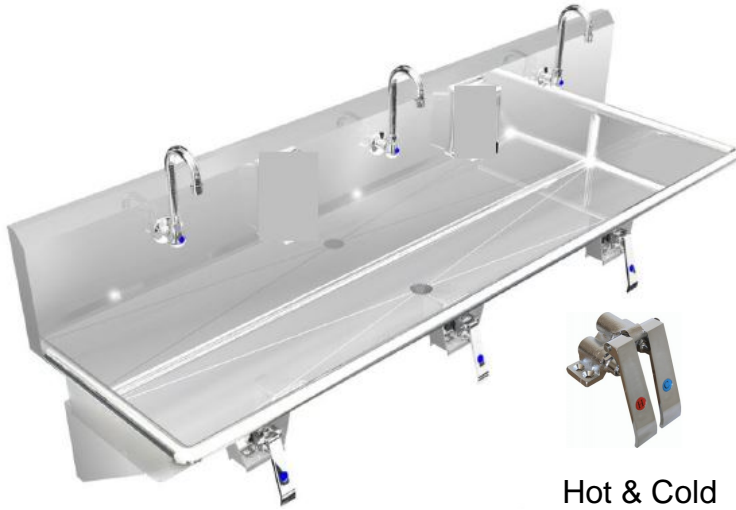


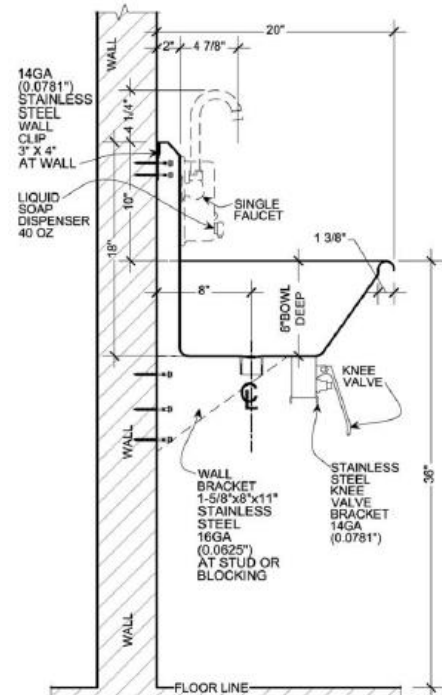
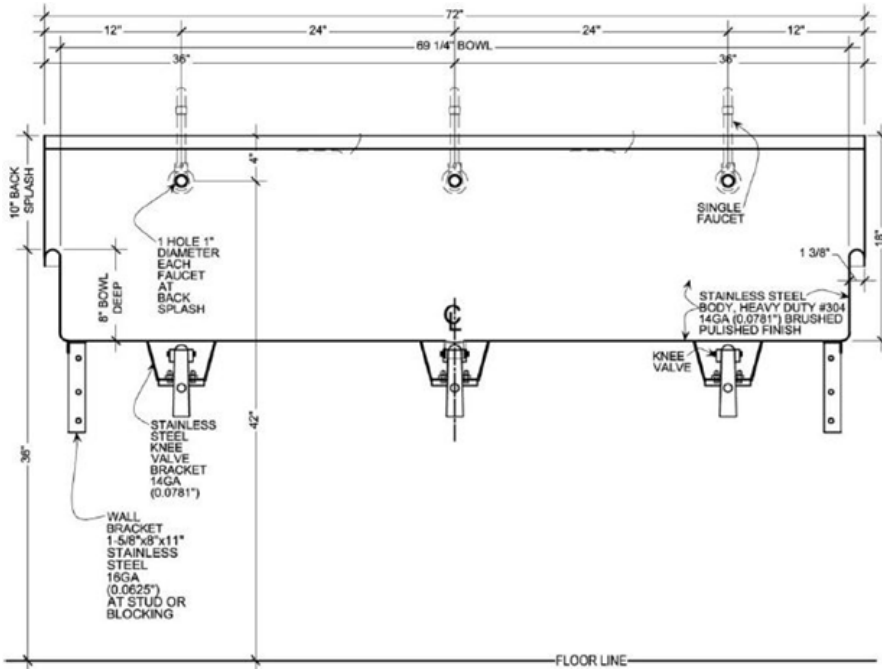
# Wicketts Stainless

## SPECIFICATION

Commercial Sink Heavy Duty  
Wash Up Sink



Hot & Cold



Model Number	A	B	C	D	F
WWT-7220-K-WB	72	20	69	8	10

### Engineering Specification:

14 gauge, type 304 stainless steel wash sink. 1 3/8" rolled rims. 1 1/2" welded in drain.  
Exposed surfaces polished to a satin finish. Supported on (2) wall brackets and clips.

**Wicketts Stainless, LLC**  
2618 San Miguel Dr. Bldg. # 376  
Newport Beach, CA 92660  
T. 951-858-2548  
F. 951-638-9059  
sales@wickettsstainless.com  
www.wickettsstainless.com



Approved for Manufacturing  
Company: \_\_\_\_\_  
Signature: \_\_\_\_\_  
Print: \_\_\_\_\_ Date: / /