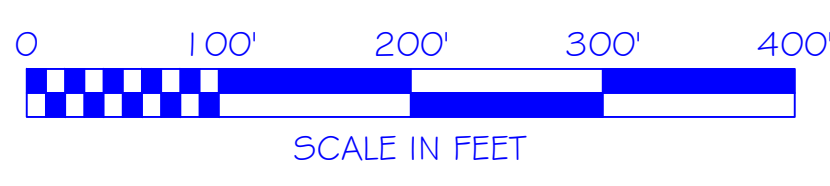
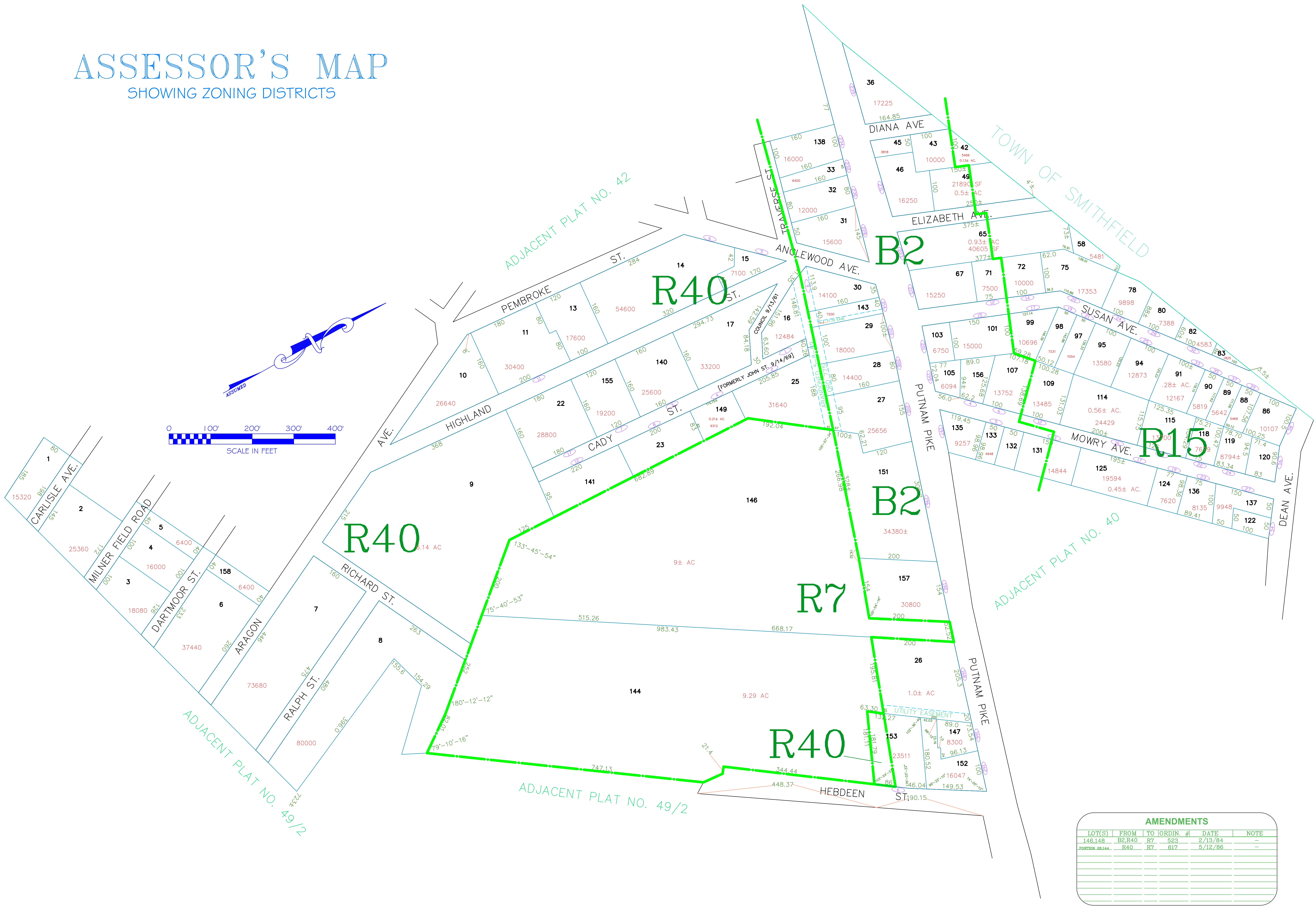


# ASSESSOR'S MAP

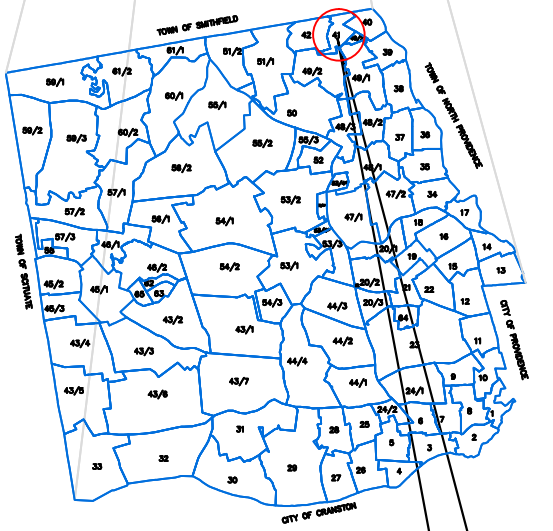
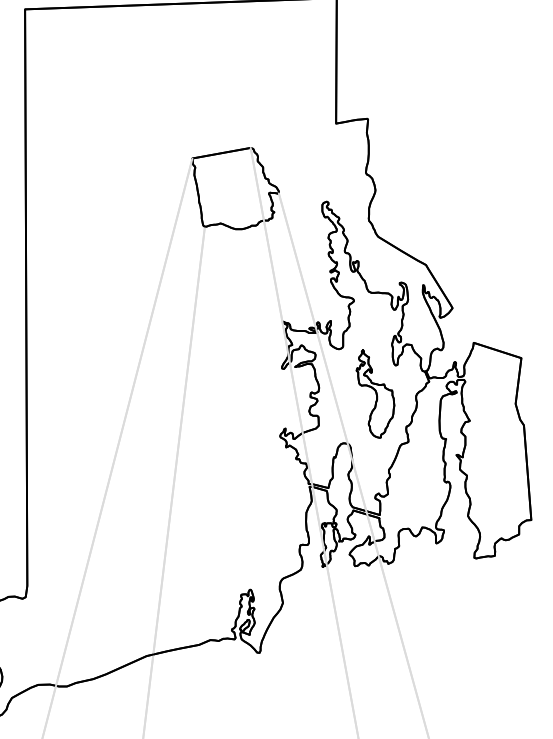
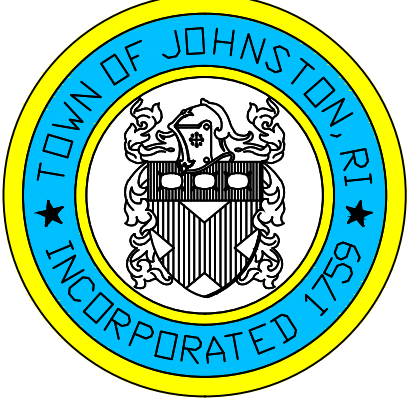
SHOWING ZONING DISTRICTS



Assessor's Plat Number

# 41

STATE OF RHODE ISLAND  
 TOWN OF JOHNSTON  
 PROVIDENCE COUNTY  
 INCORPORATED 1759  
 ASSESSOR'S OFFICE  
 1385 HARTFORD AVENUE  
 JOHNSTON, RHODE ISLAND  
 02919



PLAT INDEX  
 AREA

AMENDMENTS					
LOT(S)	FROM	TO	ORDIN. #	DATE	NOTE
148,149	B2,R40	R7	523	2/13/84	-
JOHNSTON 28,144	R40	R7	617	5/12/86	-

Scale: 1:100  
 Revised By: Benjamin Ng  
 Last updated: January 04, 2016  
 Date printed: January 04, 2016

For copies of plat maps, please go to the DPW at 100 Irons Avenue Johnston Rhode Island. Thank you.

NOTE: This map was prepared for the use of the Town of Johnston for assessment and illustrative purposes only. It does not represent a survey of the premises. No liability is assumed as to the sufficiency or accuracy of the data delineated hereon.