

Weekly Major Equity Indexes Charts Newsletter

August 6, 2018

The Weekly Equity Indexes Charts Newsletter provides Cornelius Luca's trade ideas, model signals, and absolute charts

© 2018 Luca Global Markets, LLC. All rights reserved. This content is provided as general information only and does not constitute investment advice or a representation that any investment, security or other product is suitable for any person. This content reflects the opinions only of the author and cannot be interpreted as advice.

This content is the intellectual property of Cornelius Luca. Any copying, distribution or redistribution of this content is expressly prohibited without the prior written consent of Cornelius Luca.

Cornelius Luca shall not be liable for any errors in the content, or for any actions taken in reliance thereon.

Trade Ideas

- G7: Long S&P 500 only *while above* the 21-day exponential moving average
- G7: Short DAX only *while below* the 5-day exponential moving average
- BRIC: Long Brazil's Bovespa & India's BSE Sensex *while above* the 5-day exponential moving average
- Middle East: Long Abu Dhabi Securities Exchange ADX سوق #أبو ظبي للأوراق المالية *while above* the 5-day exponential moving average

G7 Equity Indexes

Model Signals - Daily & Weekly

<i>G7 Index</i>	Daily Model	since	Daily Bias (> or < 21-day EMA)	Daily Risk	Weekly Model	since	Weekly Bias (> or < 21-week EMA)	Weekly Risk
S&P 500	L	2-Aug	bullish	bullish	L	5-Jul	bullish	bullish
Germany DAX	S	30-Jul	slightly bearish	slightly bearish	S	31-Jul	sideways	neutral
UK FTSE	L	3-Aug	sideways	neutral	S	31-Jul	sideways	neutral
France CAC	S	6-Aug	slightly bullish	slightly bearish	S	6-Aug	slightly bullish	slightly bearish
Italy Borsa Italiana	S	6-Aug	slightly bearish	slightly bearish	S	18-May	bearish	slightly bearish

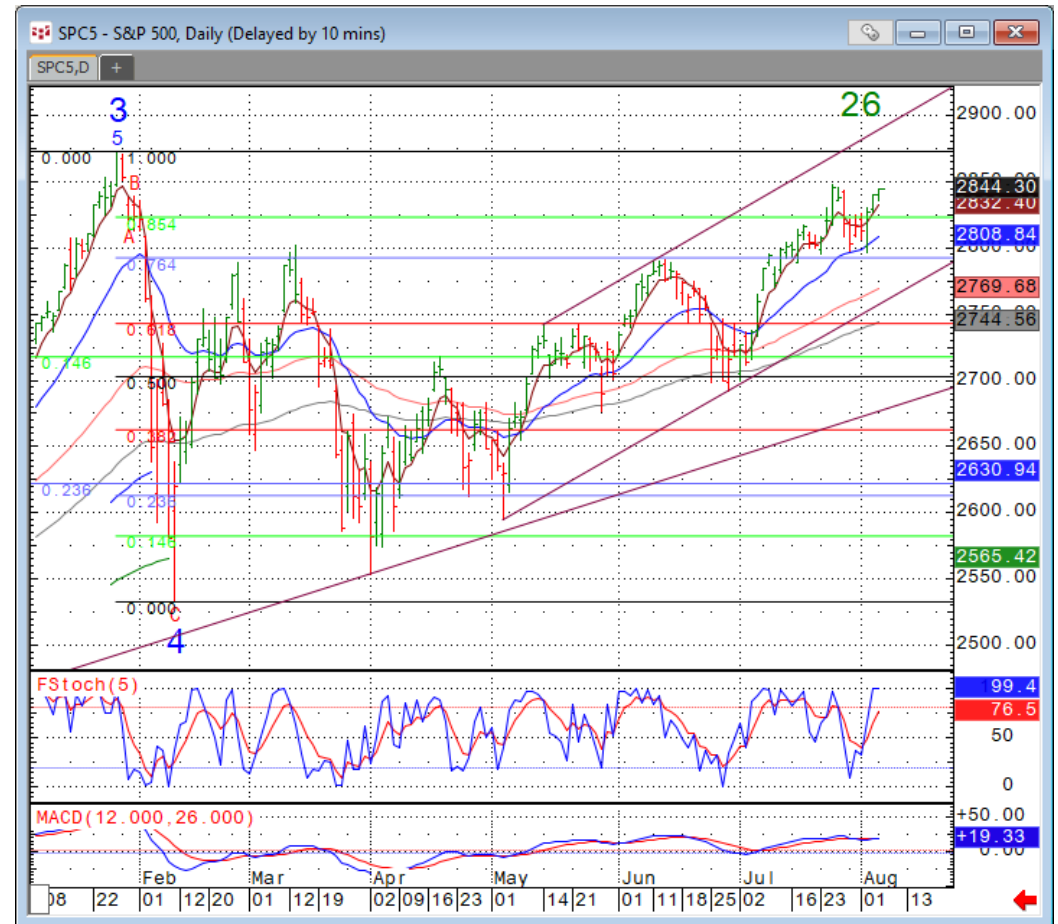
Source: Proprietary Luca Global Markets, LLC Model

S&P 500

Comment:

Long S&P 500 only while above the 21-day EMA

- The S&P 500 found support from the 76.4% Fibonacci and 21-day EMA is attempting another attack at its record high (1/26)
- It trades above its 5-, 21- & 60-day EMAs
- Only a break below the 21-day would raise concern
- Initial resistance: 2,848
- Further resistance: 2,873 & 2,892
- Immediate support: 2,823
- Further support: 2,798, 2,755, 2,722 & 2,663
- Fast stochastics: bullish
- MACD: bullish



CQG Inc. © 2018 All rights reserved worldwide. <http://www.cqg.com>

Mon Aug 06 2018 11:40:54, CQG 18.12.8080

G7 Equity Index Trade Idea

Comment:

Short DAX only *while below* the 5-day EMA

- The DAX is lacking direction, it can move either way, so it needs new information
- It slipped from a 1 ½-month & trades just below its 5- & 21-day EMAs
- Immediate support: 12,493
- Further support: 12,399 & 12,104
- Initial resistance: 12,716
Further resistance: 12,887 & 13,062
- Fast stochastics: bearish



BRIC Equity Indexes

Model Signals - Daily & Weekly

<i>BRIC Index</i>	Daily Model	since	Daily Bias (> or < 21-day EMA)	Daily Risk	Weekly Model	since	Weekly Bias (> or < 21-week EMA)	Weekly Risk
Brazil	L	2-Aug	bullish	bullish	L	29-Jun	bullish	bullish
Russia	S	1-Aug	slightly bearish	slightly bearish	S	2-Aug	slightly bearish	slightly bearish
India	L	3-Aug	bullish	bullish	L	6-Jul	bullish	bullish
China-Shanghai	S	1-Aug	slightly bearish	slightly bearish	S	1-Aug	slightly bearish	slightly bearish

Source: Proprietary Luca Global Markets, LLC Model

BRIC Equity Index Trade Idea

Comment:

Long Brazil's Bovespa while above the 5-day EMA

- Bovespa remains strong near a 2 ½-month high
- Enjoy the ride while above both its *divergent* 5- & 21-day EMAs
- Initial resistance: 81,792
- Further resistance: 86,678
- Immediate support: 79,655
- Further support: 75,890 & 73,450
- Fast stochastics: bullish



Middle East Equity Indexes Model Signals - Daily & Weekly

<i>Middle East Index</i>	Daily Model	since	Daily Bias (> or < 21-day EMA)	Daily Risk	Weekly Model	since	Weekly Bias (> or < 21-week EMA)	Weekly Risk
Saudi Arabia	S	23-Jul	slightly bearish	slightly bearish	S	24-Jul	bullish	slightly bearish
Abu Dhabi	L	6-Aug	bullish	bullish	L	5-Jul	bullish	bullish

Source: Proprietary Luca Global Markets, LLC Model

Middle East Equity Index Trade Idea

Comment:

Long Abu Dhabi Securities Exchange ADX

سوق #أبو ظبي للأوراق المالية

while above the 5-day EMA

- The ADX strengthened to an over 3 ½ -year high
- It holds above both its *divergent* 5- & 21-day EMAs
- Initial resistance: 4,932
- Further resistance: 5,004 & 5,255
- Immediate support: 4,799
- Further support: 4,783, 4,622 & 4,494
- Fast stochastics: bullish



How to Use the Heat Map

Bias: If the Candle > 21-period EMA = bullish
 If the Candle < 21-period EMA = bearish
 If the Candle around 21-period EMA = sideways

Long or Short

Since when

Risk: Bullish or Bearish
 Candle as of Monday am EST

	Commodities	Daily Model	since	Daily Bias (> or < 21-day EMA)	Daily Risk	Weekly Model	since	Weekly Bias (> or < 21-day EMA)	Weekly Risk
Energy	Crude (CLc1)	S	27-Apr	bullish	slightly bullish	L	23-Mar	slightly bearish	slightly bullish
	Brent (LCOc1)	L	21-Apr	slightly bullish	slightly bullish	L	6-Apr	slightly bearish	slightly bullish
	Natural gas (NGc1)	S	23-Apr	bearish	bearish	S	20-Apr	bearish	slightly bearish
	Palm oil (FCPOc1)	L	24-Apr	sideways	neutral	S	20-Apr	slightly bearish	slightly bearish
Metals	Gold (GCc1)	S	24-Apr	bearish	bearish	S	20-Mar	slightly bearish	slightly bearish
	Silver (SIc1)	S	22-Apr	bearish	bearish	S	24-Apr	bearish	bearish
	Platinum (PLc1)	S	20-Apr	bearish	bearish	S	20-Mar	bearish	slightly bullish
	Copper (HGc1)	L	24-Apr	slightly bearish	slightly bullish	S	24-Apr	slightly bearish	slightly bearish
Softs	Coffee (KCN5)	L	24-Apr	sideways	neutral	L	24-Apr	slightly bullish	slightly bullish
	Cocoa (LCCN5)	L	23-Apr	bullish	bullish	L	13-Apr	bullish	bullish
	Soy meal (SMN5)	S	24-Apr	bearish	slightly bearish	S	24-Apr	bearish	slightly bearish
	Wheat (WN5)	S	24-Apr	bearish	slightly bearish	S	24-Apr	bearish	bearish
	Corn (CN5)	S	20-Apr	bearish	bearish	S	6-Apr	bearish	bearish

Source: Proprietary Luca Global Markets, LLC Model

L = long
 S = short