

**24000 KW Condensing steam turbine generator set****TURBINE:**

Manufacturer/Type: General Electric straight condensing/ SC+4
Rated output: 24,000 KW
Maximum output: 26,500 kw
Inlet steam: 850 psig/900 deg F
Maximum design flow: 220,000 lbs/hr
Steam rate: 8.3 lbs/kwh
Extraction : 3 extraction for feed water heaters
Exhaust steam: 1.5" hga
Number of stages: 17
Speed: 3600 rpm
Inlet size: 10" -900#
Exhaust size: 90" SF down
Rotation: CCW (facing Governor end)
Last stage blade height: 17.5"
Control system: EHC Mark V

GENERATOR:

Manufacture/Type: General Electric/5A4 /TEWAC
Rating: 31,765 kva, 13800 v, 3 phase, 60 hz
Amps: 1,329
Field: 125 v dc, 715 amps
PF: 0.85
Exciter: Kato PMG , brushless type
Speed: 3600 RPM

CONDENSER:

Manufacturer: Graham surface condenser
Surface area: 38,345 sq. ft

HISTORY:

Unit built 1998 shutdown 2016, Last overhaul 2009

SCOPE OF SUPPLY:

Steam turbine, generator, trip and throttle valve
Lube oil system with lube oil tank, lube oil cooler, pumps.
Generator terminal box
Gland steam system
Air ejector system
Condenser
Mark V Control
Lube oil purification system
Manuals and drawings



NSV Energy, LLC

www.nsvenergy.com

Generator breaker and control panel

Approximate weights

Turbine skid 141,000 lbs

Generator 150,000 lbs.



sales@nsvenergy.com

908-421-4139



NSV Energy, LLC

www.nsvenergy.com



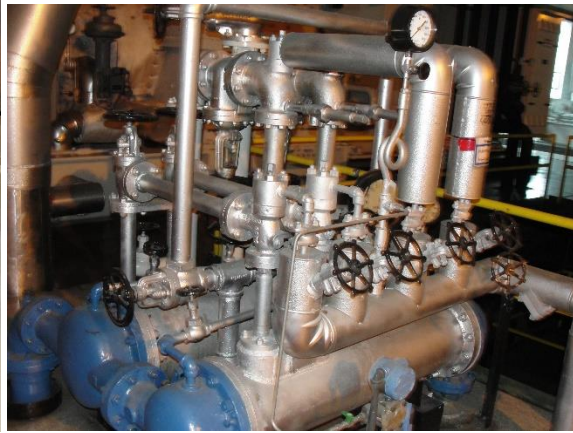
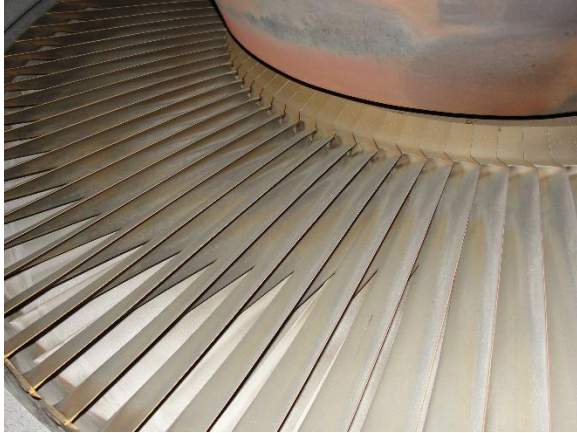
sales@nsvenergy.com

908-421-4139



NSV Energy, LLC

www.nsvenergy.com



sales@nsvenergy.com

908-421-4139