

Trombone 2

# Don't You (Forget About Me)

by Keith Forsey and Steve W. Schiff

arr. Rob Blankenship  
percussion arr. Matt Goves

Rock ♩ = 120

Measures 1-6. Bass clef, 4/4 time, key of Bb. Starts with a forte (*f*) dynamic. Notes include quarter notes, eighth notes, and a half note.

Measures 7-19. Bass clef, 4/4 time, key of Bb. Measure 11 has a 2-measure rest, measure 18 has an 8-measure rest. Dynamic is mezzo-piano (*mp*).

Measures 20-25. Bass clef, 4/4 time, key of Bb. Measure 23 has a 3-measure rest. Dynamic is forte (*f*).

Measures 26-30. Bass clef, 4/4 time, key of Bb. Notes include quarter notes and eighth notes.

Measures 31-35. Bass clef, 4/4 time, key of Bb. Measure 31 is boxed. Dynamic is mezzo-forte (*mf*).

Measures 36-40. Bass clef, 4/4 time, key of Bb. Measure 39 is boxed. Dynamic is mezzo-forte (*mf*).

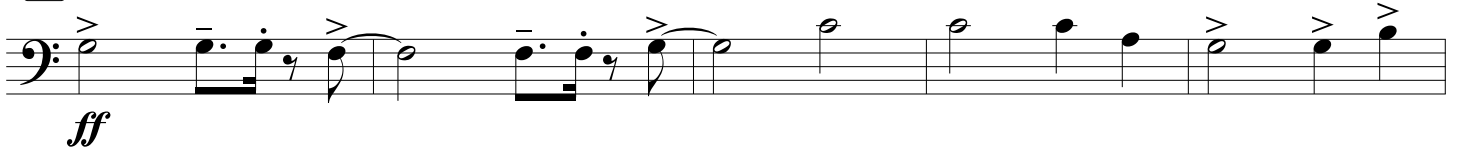
Measures 41-46. Bass clef, 4/4 time, key of Bb. Notes include quarter notes and eighth notes.

Measures 47-51. Bass clef, 4/4 time, key of Bb. Measure 47 is boxed. Dynamics are fortissimo (*ff*) and fortissimo piano (*fp*).

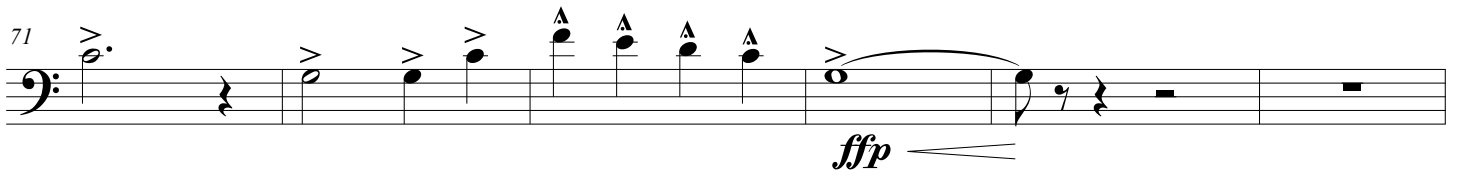
Measures 52-59. Bass clef, 4/4 time, key of Bb. Measure 52 is boxed. Measure 54 has a 3-measure rest. Dynamics are sforzando (*sffz*) and mezzo-piano (*mp*).

Measures 60-64. Bass clef, 4/4 time, key of Bb. Measure 60 is boxed. Measure 63 changes to 2/4 time, measure 64 changes to 4/4 time. Dynamic is forte (*f*).

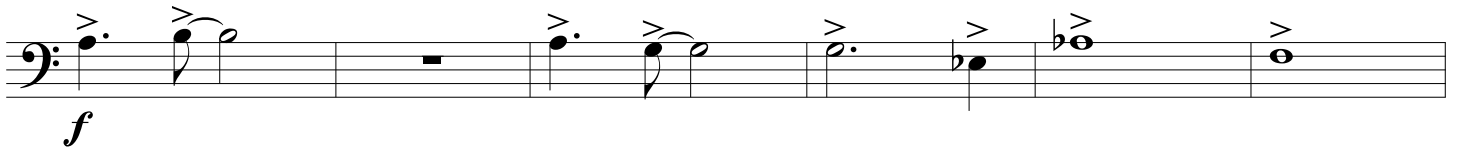
66



71



77



83

