

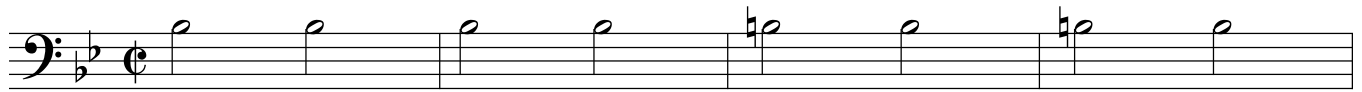
Baritone

NEW YORK

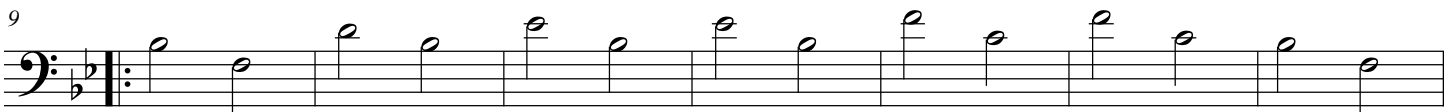
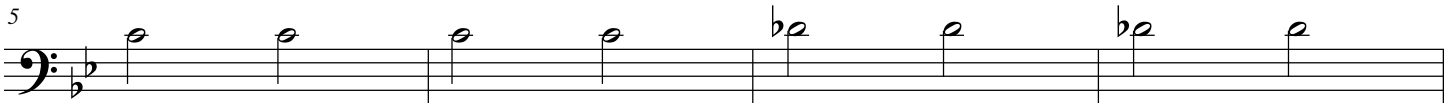
March

Arthur Lemos

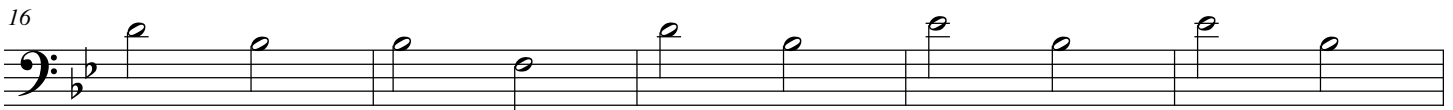
$\text{♩} = 128$



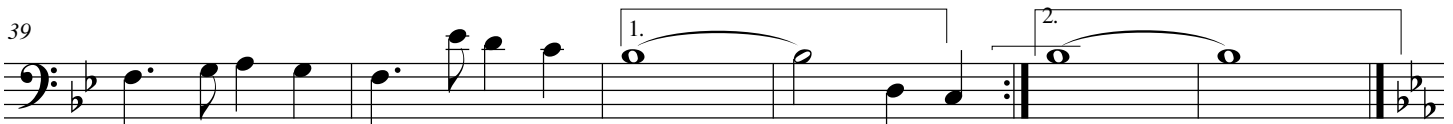
ff



f



ff



f

2 Baritone

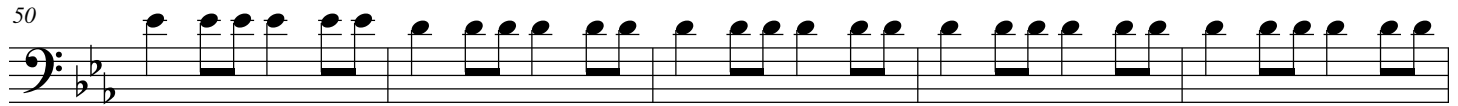
NEW YORK

45  Trio



Musical staff for measures 45-49, featuring a continuous eighth-note pattern in the bass clef.

50



Musical staff for measures 50-54, continuing the eighth-note pattern.

55



Musical staff for measures 55-59, continuing the eighth-note pattern.

60



Musical staff for measures 60-64, continuing the eighth-note pattern.

65



Musical staff for measures 65-69, continuing the eighth-note pattern.

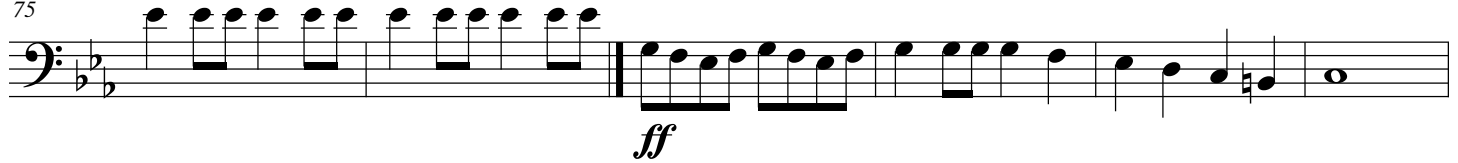
70



Musical staff for measures 70-74, continuing the eighth-note pattern.

To Coda

75



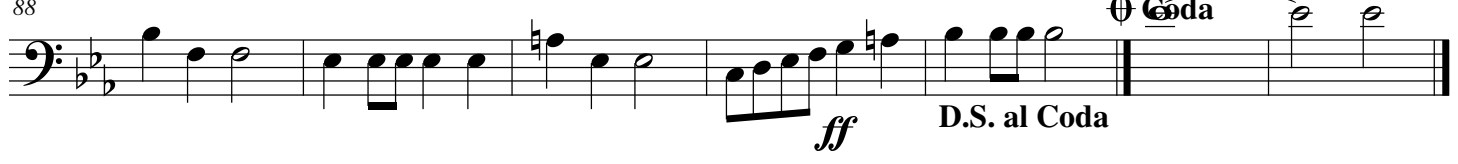
Musical staff for measures 75-80, featuring a change in rhythm and dynamics. A *ff* dynamic marking is present below the staff.

81



Musical staff for measures 81-87, continuing the melodic line.

88



Musical staff for measures 88-93, concluding with a *ff* dynamic marking and a *D.S. al Coda* instruction. A Coda symbol is placed above the final measure.