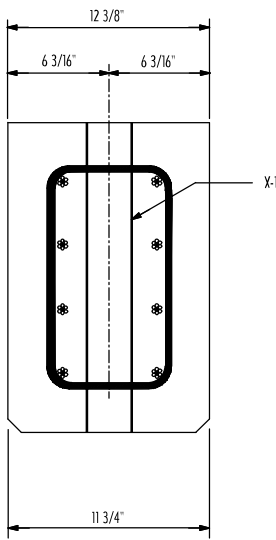
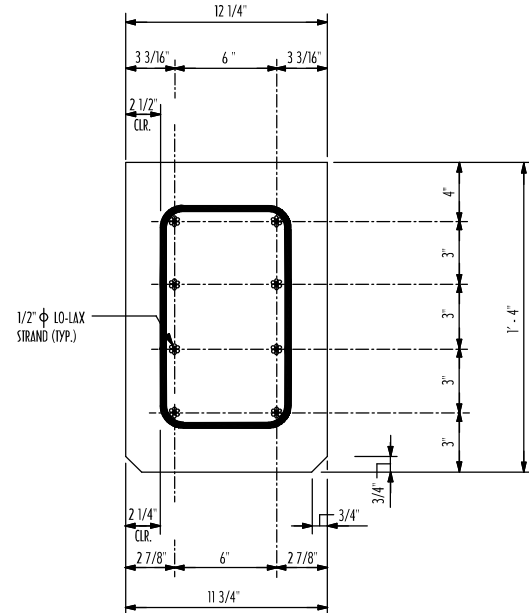


ELEVATION



SECTION AA



SECTION BB

CAST IN ITEMS		
MARK NO.	QTY.	DESCRIPTION
L1	2	1/2" STRAND LIFT HOOKS
X 1		3" Φ COOR. PLASTIC SLEEVE

SECTION PROPERTIES			
AREA (SQ. IN.)	192	WT. (LB/FT)	193
		PERIM. (FT.)	4.67

- GENERAL NOTES**
- 1) CONCRETE STRENGTH = 6000 PSI @ 28 DAYS
 - 2) 1/2 IN. DIA. STRAND TO HAVE A MINIMUM ULTIMATE STRENGTH OF 270 KSI AS PER ASTM A416 (A = 0.153 SQ. IN.)
 - 3) WIRE SPIRAL TO BE W3.4 (5 GAUGE) COLD DRAWN WIRE
 - 4) STRANDS TO BE CUT FLUSH WITH BEAM ENDS
 - 5) TENSION PER STRAND - 31.0 K
 - 6) TRANSFER OF PRESTRESS FORCE @ 3500 PSI CONCRETE STRENGTH
 - 7) BEAMS ARE DESIGNED TO HAVE A MINIMUM OF 3 BEARING POINTS

Prepared By:
RJW Consulting International, Inc.
 2518 Catalina Dr. Orlando, FL 32805
 (407) 493-7573

Prepared For:
HENDERSON PRESTRESSED CONCRETE, INC.
 822 ANCLOTE RD.
 TARPON SPRINGS, FL 34689
 (727) 938-2828
www.hendersonprestressedconcrete.com

DRAWN: **RJW** ISSUED (PRELIM.): **01/31/18**

CHECKED: ISSUED (PRODUCTION):

Project:

12" X 16" BEAM			
REV.	DATE	DESCRIPTION	MARK NO.
REVISIONS			QUANTITY
THIS DRAWING IS THE PROPERTY OF HENDERSON PRESTRESSED CONCRETE, INC. (HPC) AND SHALL NOT BE REPRODUCED BY ANY MEANS WITHOUT THE EXPRESSED WRITTEN CONSENT OF HPC			DWG. NO.