



STATE OF WASHINGTON
BOARD OF PILOTAGE COMMISSIONERS

2901 Third Avenue, Suite 500 | Seattle, Washington 98121 | (206) 515-3904 | www.pilotage.wa.gov

BPC SAFETY ADVISORY BULLETIN 21-01

November 18, 2021

The Washington State Board of Pilotage Commissioners, together with USCG and IMO, **requires compliance** with SOLAS V Reg 23 & IMO Resolution A.1045(27) requirements for pilot transfer arrangements (PTAs). Vessel Deck Officers and Crew should be well trained in these regulations to enable Pilots to safely embark and disembark.

Washington State pilots frequently encounter pilot ladders not in compliance with safety standards, including the examples shared in this notice, which were documented through our reporting process for dangerous ladders.

Noncompliant pilot ladders have caused serious injury and death. Be aware that pilots may refuse to board vessels with noncompliant ladders and that this may result in delays.

These occurrences (see next pages) are brought to your attention to remind you of the following requirements:

General:

- **A licensed Deck Officer must be present during Pilot transfers**
SOLAS V, Regulation 23, 2.2
- **Pilot ladder should rest firmly against ship's side.**
SOLAS V, Regulation 23, 3.3.1.3
- **Pilot ladder steps should be horizontal and evenly spaced.**
IMO Resolution A.1045(27) 2.1.2.6-7
- **Pilot ladder steps and spreaders should not be varnished or painted.**
ISO 799-1:2019(E), 4.1
- **Pilot ladders more than 30 months old must have a certificate of strength testing.**
ISO 799-1:2019(E), 10.4

Combination ladders:

- **Accommodation ladder should be well secured to the ship's side.**
IMO Resolution A.1045(27) 7.2.2.5
- **Pilot ladder should be rigged immediately adjacent to the lower platform of the accommodation ladder.**
IMO Resolution A.1045(27) 3.6
- **Pilot ladder should extend 2 meters above the lower platform of an accommodation ladder.**
IMO Resolution A.1045(27) 3.6
- **Pilot ladder should be secured 1.5 meters above platform.**
SOLAS V, Regulation 23, 3.3.2.1
- **Lower platform of an accommodation ladder should be at least 5 meters (16 feet) above sea level.**
IMO Resolution A.1045(27) 3.3



Pilot ladder should extend 2 meters above the lower platform of an accommodation ladder.

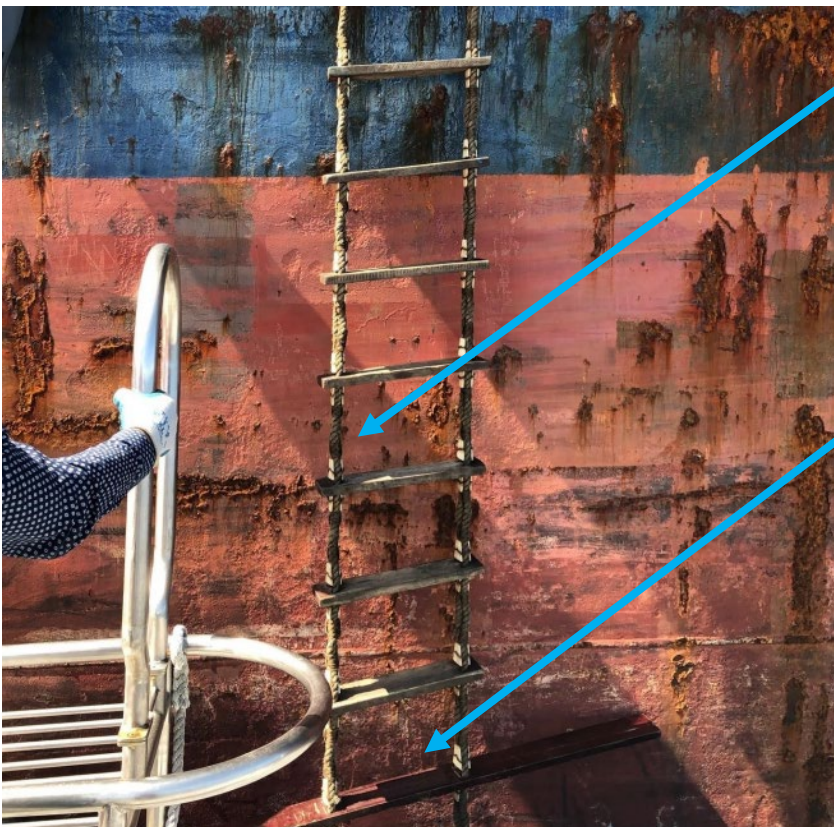
IMO Resolution A.1045(27) 3.6

Pilot ladder should be secured 1.5 meters above platform.

SOLAS V, Regulation 23, 3.3.2.1

Pilot ladder should rest firmly against ship's side.

SOLAS V, Regulation 23, 3.3.1.3



Pilot ladder steps should be horizontal and evenly spaced.

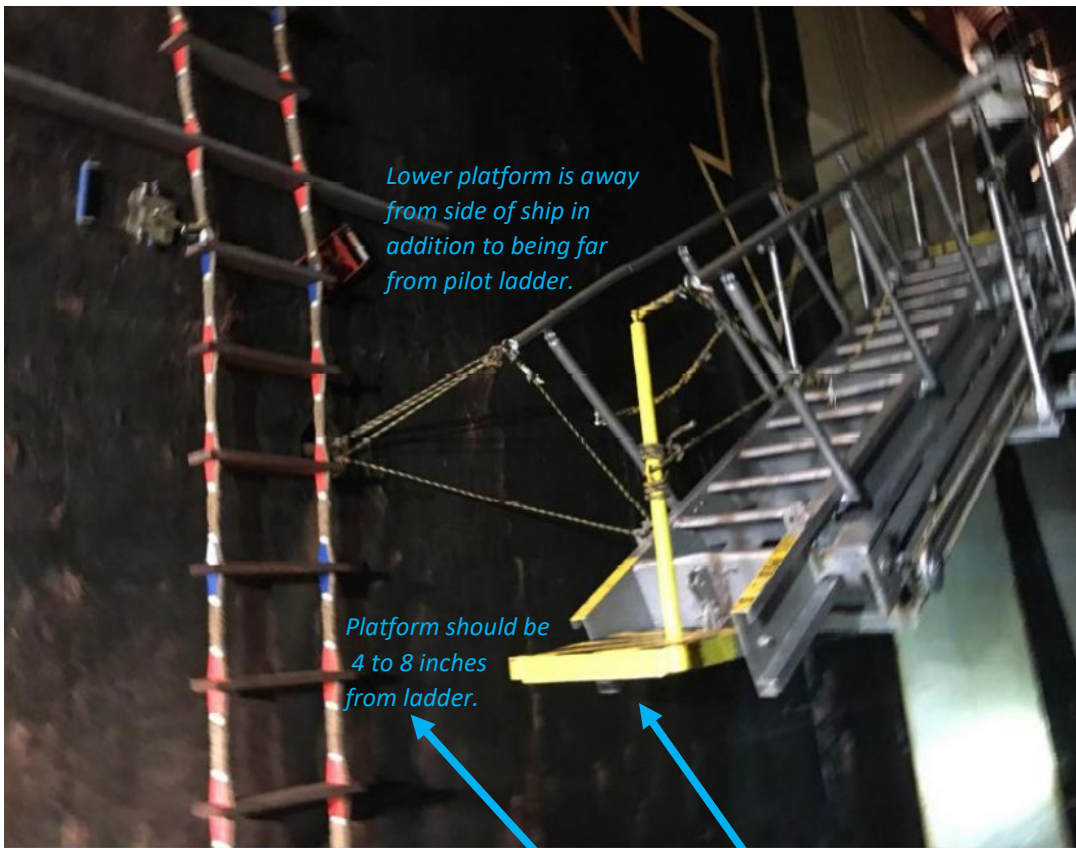
IMO Resolution A.1045(27) 2.1.2.6-7

Pilot ladder steps and spreaders should not be varnished or painted.

ISO 799-1:2019(E), 4.1

Note: This ladder was encountered on August 23. Its many problems were corrected in early September.

The issues being emphasized in this notice are not necessarily the only issues with this PTA.



Lower platform is away from side of ship in addition to being far from pilot ladder.

Platform should be 4 to 8 inches from ladder.

Accommodation ladder should be well secured to the ship's side.

IMO Resolution A.1045(27) 7.2.2.5

Pilot ladder should be rigged immediately adjacent to the lower platform of the accommodation ladder. The distance between ladder and platform should be 0.1 - 0.2 meters (4 to 8 inches).

IMO Resolution A.1045(27) 3.6

Lower platform of an accommodation ladder should be at least 5 meters (16 feet) above sea level.

IMO Resolution A.1045(27) 3.3



The issues being emphasized in this notice are not necessarily the only issues with this PTA.