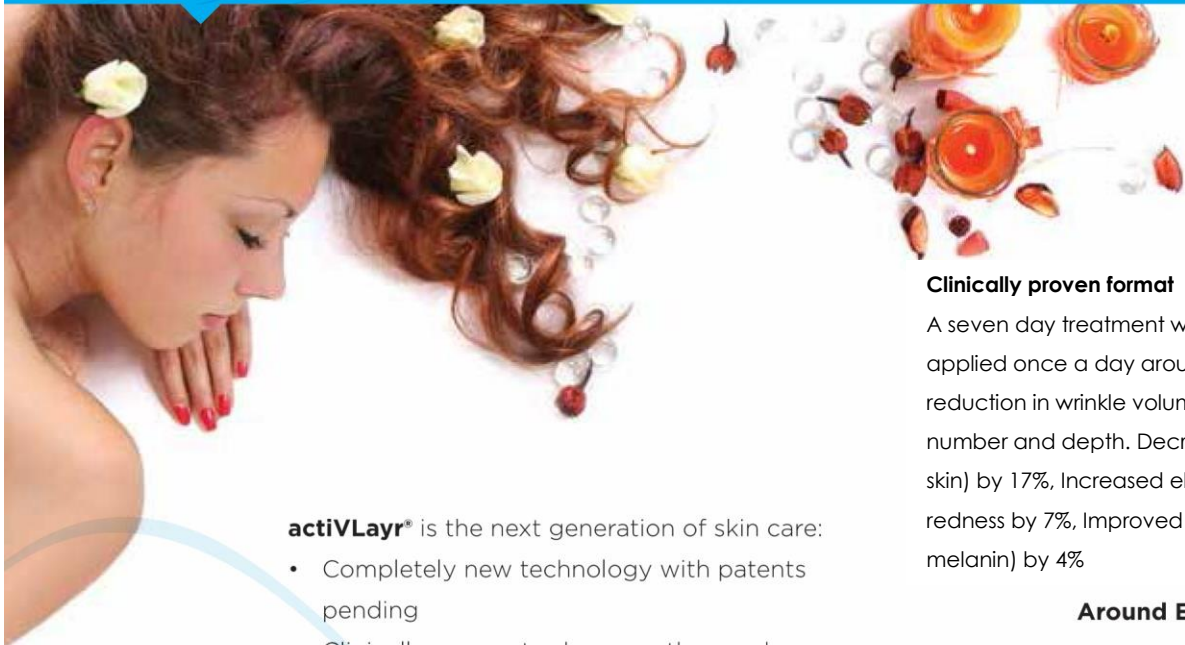


# actiVLayr®

revolutionary new anti-wrinkle skin care technology



**actiVLayr®** is the next generation of skin care:

- Completely new technology with patents pending
- Clinically proven to decrease the number and volume of wrinkles
- Delivering a measured dose of natural anti-aging fruit extracts and marine collagen
- Convenient and easy to apply

### Completely new technology

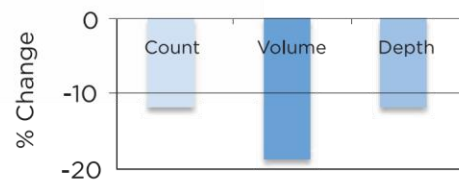
**actiVLayr®** is a patch on which a proprietary blend of fruit extracts and marine collagen have been immobilized in a dry stable format requiring no additives. The **actiVLayr®** patch has been especially shaped to go under and around the eye to concentrate treatment on around-eye wrinkles and under-eye darkness. During application on to moistened skin the ingredients are rapidly transferred from the patch and activated on the skin.



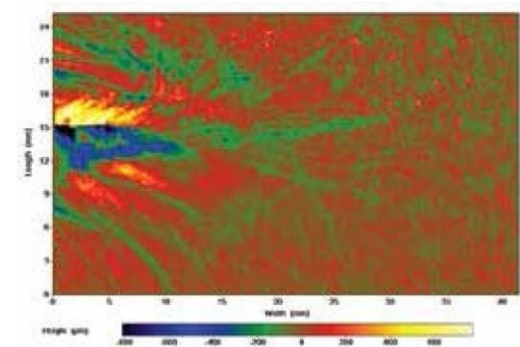
### Clinically proven format

A seven day treatment with an **actiVLayr®** patch applied once a day around the eye led to a 19% reduction in wrinkle volume, a 12% reduction in wrinkle number and depth. Decreased TEWL (water loss from skin) by 17%, Increased elasticity by 16%, Reduced skin redness by 7%, Improved skin whitening (decreased melanin) by 4%

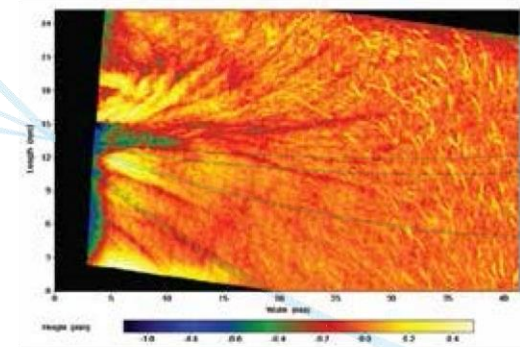
### Around Eye Wrinkles



### Before:



### After:



**OCEANIA**  
Nanofibre Distributors

P. O. Box 115, Palmerston North, New Zealand 4440  
[www.oceaniananofibres.com](http://www.oceaniananofibres.com)  
[info@oceaniananofibres.com](mailto:info@oceaniananofibres.com)

**Clinically proven ingredients**

**actiVLayr®** is made from a proprietary blend of just three natural ingredients, all sourced from New Zealand's pure and clean environment:



• **Vinanza® Kiwifruit Skin Extract** – this unique natural extract is made from the skins of kiwifruit grown in New Zealand. These kiwifruit have developed a range of highly active biomolecules in the skin that protect the fruit from the intense sunlight that penetrates the clear unpolluted skies of New Zealand. These same biomolecules have been extracted from the skin into the Vinanza® Kiwifruit Skin Extract and this extract has been clinically shown to decrease trans epidermal water loss and brighten skin of volunteers\*.



• **Vinanza® Grape Seed Extract** – a natural extract from the seeds of Sauvignon blanc grapes grown in the world renown wine region of Marlborough, New Zealand. Vinanza® Grape Seed Extract has been shown to increase elasticity and decrease the redness of the skin of volunteers\*.



• **Marine collagen.** Sourced from the skin by-product of deep water fish caught from New Zealand's pristine oceans. Collagen is well known for maintaining skin integrity and marine sources are sought after due to the purity of collagen from this origin.

**Simple application**

Convenient and easy application taking less than 1 minute. All participants in the clinical trial# found the product easy to use, appreciated the rapidness of the treatment and there were no reports of adverse reactions.

**Directions for use:**

1. Separate patch from backing layer
2. Wet the area under the eyes or around the lips
3. Dry hands thoroughly and press white side of patch to the treatment area for 5 seconds
4. Remove patch and pat-down treatment area with a damp cloth



**Pure and natural with no additives**

The fruit extracts and marine collagen in **actiVLayr®** are manufactured from raw materials harvested using sustainable and environmentally friendly practices, then extracted using natural processes, including 100% Aqua Pure® water based extraction technology. **actiVLayr®** delivers only these skin care biomolecules and nothing else – no carriers, detergents, thickening agents, emulsifiers, preservatives, fragrances or solvents.

**Effective and focused anti-wrinkle treatment**

**actiVLayr®** patches are formulated to deliver exactly the right dose of fruit extracts and collagen to exactly the right location, providing optimal skin care benefits and maximum effectiveness for around-eye wrinkles and under-eye darkness.

# 17 female volunteers from 35 years of age each applied a single patch around the eye once a day for 7 days. Wrinkle parameters were measured using a Primos® 3D microtopography imaging system (GF Messtechnik GmbH, Germany).

\* A double blind crossover trial of 10 volunteers with Vinanza® Kiwifruit Skin Extract and Vinanza® Grape Seed Extract applied in a cream base once a day for 8 days. Skin parameters were measured with a Tewameter, Cutometer and a Mexameter.

