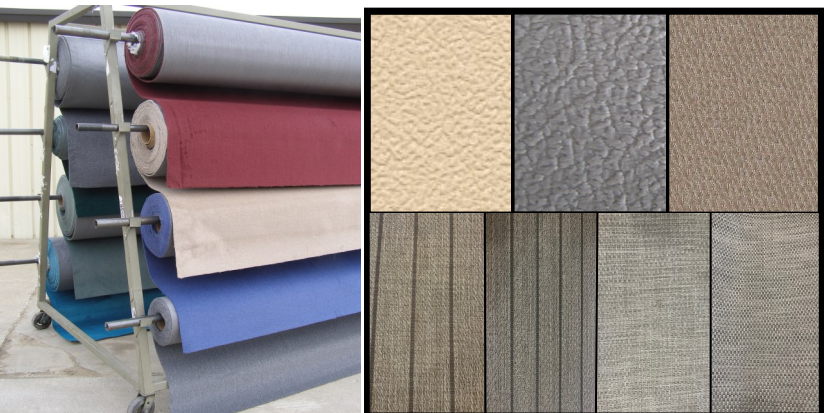


PONTOON REBUILD & ACCESSORIES

2023 Boat Show & Open House Pricing



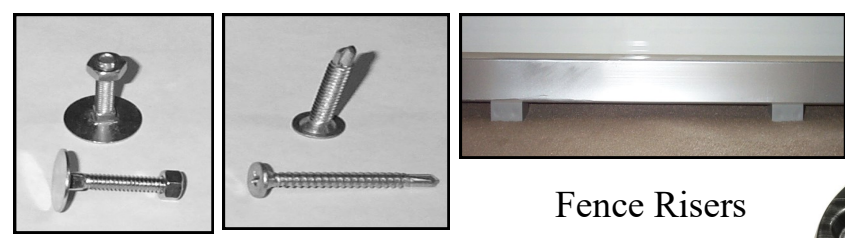
Complete Interiors, Fence Packages, Bimini Tops, *almost* **Everything for Pontoons**



Custom cut carpet to your size; up to 6 Colors in 3 styles
Vinyl Flooring in Tan or Gray, in 50 Mil thickness
Woven Vinyl available in Tan, Toffee, & Gray
Teak Look Woven Vinyl in Beige, Tan, & Gray



3/4" thick, 7 ply, True Marine Grade CCA Decking



Elevator Bolts, Deck Screws, Fence Bolts
Hard to Find Pontoon Hardware

Fence Risers



Dock & Pontoon Ladders



Steering Consoles



Captain Seats



Pontoon Furniture



LED Accent Lighting for Pontoon Boats



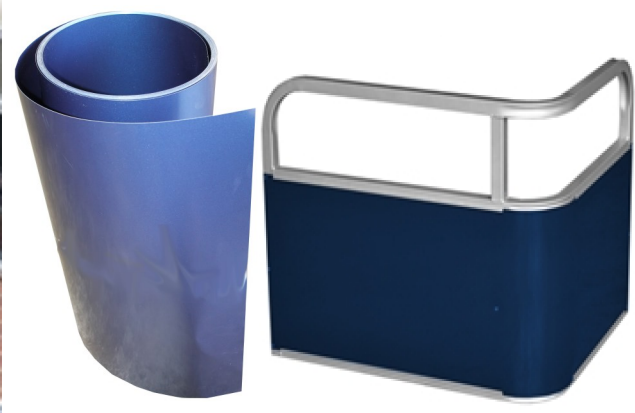
Hard to Find Pontoon Parts



Pontoon Tables and Parts



Pontoon Top Components



Replacement Fence, Fence Paneling, & Fence Graphics



Dock Bumpers



Your Local Dealer

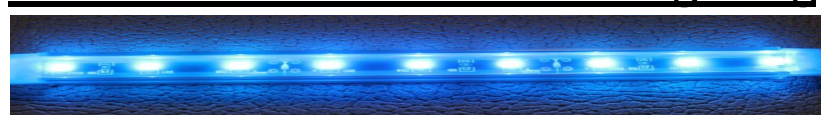
Lighting, Electrical, and Hard to Find Pontoon Parts



As seen on the new boats.
Bright, yet low voltage. Illuminate your deck at night. Mounts with adhesive backing and mounts in a clear C channel.



Under Deck LED Pontoon Lighting



20' and Under Pontoon Light Kit \$179

Kit includes two 19'7" long Blue LED lighting strips with ten 4' long mounting channels.

24' and Over Pontoon Light Kit \$199

Kit includes two 24'6" long Blue LED lighting strips with twelve 4' long mounting channels.

Wiring Harness for Under Deck Light Kits \$24.99

Allows for quick waterproof installation of Under Deck Light Kit.

LED Under Seat Lighting

Available in blue only.

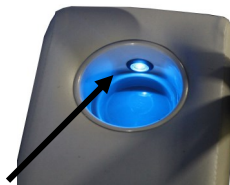
6" White or Blue Accent Light	\$9.50
8" Blue LED Strip, Corners, & Lean Backs	\$9.99
25" Blue LED Strip, for 28" Bench	\$22.99
36" Blue LED Strip, for 38" Bench	\$29.99
52" Blue LED Strip, for 55" Bench	\$35.99

Courtesy Lights \$16.99



1 1/2" x 1/2" Available in Blue or White. Mount inside or outside seats or anywhere else for light.

Recessed LED \$10.50



Light shown mounted in cup holder.

1" Round LED available in blue or white
Drill 7/8" hole, mounts flush with surface.

LED Docking Lights \$71.95



Sold as a set of two. 4 watt, 650 lumen. Water tight, with 36" wire lead.

Pontoon Wiring Harness \$125



Snaps into our switch panel, but adapts to many existing systems. Hooks up for red & green bow lights, stern light, docking lights, horn, and live well aerator. Fits up to a 28' pontoon.

LED Running Lights \$55.95



Sold as a set: Green-Starboard, Red-Port
USCG Approved, Waterproof sealed LED

Electric Horn \$24.99



106 decibels at one meter, draws 3 amps

Stainless Fence Brace \$15.99



13" Tall, 1" wide fence brace. Adds stability to your pontoon railing (fence) system.

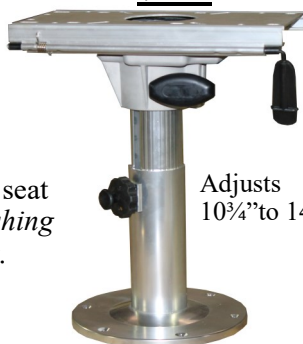
Hard to Find Pontoon Parts

3 Piece Pedestal \$69



Floor plate, removable pin, & seat mount with spring. Use on fishing seats to move around the boat.
Extra floor plate \$28.95

Adjustable Pedestal w/ Slider \$149



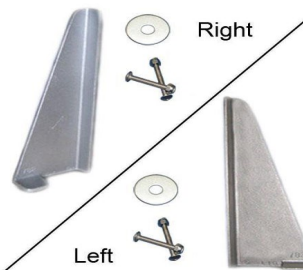
Adjusts 10 3/4" to 14 1/4"

Adjustable Pedestal \$109



Adjust 9" to 12"

Cast Fence Brace \$15.00



Cast aluminum fence brace, specify left or right when ordering.

Sequoia table leg system \$74.95



*Included with complete table packages

Table Mount \$18.95



Mount for under table

Sequoia Base \$19.95



Allows for multiple table mounting locations

Floor Mount \$18.95



2 1/4" hole

27" Table Leg \$29.50



TL-27
Fits most 2 1/4" diameter bases. Plastic on both ends for a snug fit. Designed to be used with floor plate.

Complete Table Packages

Table packages come with everything you need. Complete with the sequoia "no hole" table leg system. No need to drill a 2 1/4" hole in your floor. The chrome floor plate screws to the floor and the table leg locks into place, for a strong and secure table.

Blackwood Round Kit \$119.95



Oval Table Kit \$129.95

30" long x 18 1/4" wide



Mahogany Gloss



Matte Woodgrain



Blackwood Matte

White Round Kit \$99.95



Blue Steel Gloss
*black w/ silver streaks



Ivory Gloss



All complete table kits come standard with the Sequoia table leg system

See all table colors and styles at www.PMImarine.com/pontoon-parts

8' & 8'6" Wide Marine Carpet & Vinyl Flooring

Carpet & Vinyl is sold by the running foot. Measure the deck length and multiply by the cost per foot.



8' Wide 20 oz.

Cut Pile \$11.50 per foot



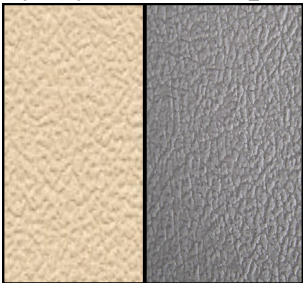
8' 6" Wide 22 oz.

Cut Loop \$13.50 per foot



8' 6" Wide 28 oz.

Luxury \$17.50 per foot

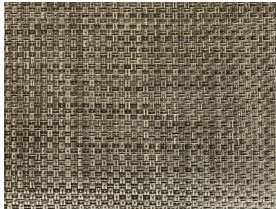


8' 6" Wide 50 Mil Thick
Tuf-Deck \$22.00 per foot
Tan, & Light Gray

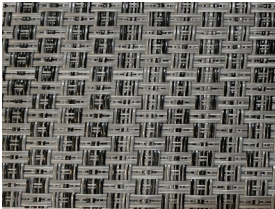
Woven Vinyl Seagrass Flooring \$36.95 per foot



Tan Seagrass



Toffee Seagrass



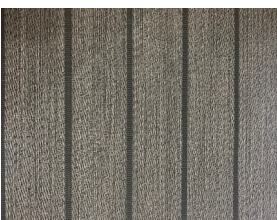
Gray Seagrass



Tan Teak



Beige Teak



Gray Teak

Our Woven Vinyl SeaGrass Flooring is 8'6" wide, thick 140 Mil construction with thick foam middle layer and felt backing for softness and durability. Uses our regular adhesive when installing on CCA treated wood decks. *If you're spending \$500-\$800 for a vinyl floor you must make certain that you're getting the "good stuff". Thin woven mil vinyl will show deck joints.*

Our flooring is the same as used by the new pontoon boat manufactures.

Carpet and Vinyl Flooring Prices

20 oz. Cut Pile Carpet	16'	\$184.00	20'	\$230.00	24'	\$276.00	28'	\$322.00
22 oz. Cut Loop Carpet	16'	\$216.00	20'	\$270.00	24'	\$324.00	28'	\$378.00
28 oz. Luxury Carpet	16'	\$280.00	20'	\$350.00	24'	\$420.00	28'	\$490.00
50 Mil Tuf-Deck Vinyl Flooring	16'	\$352.00	20'	\$440.00	24'	\$528.00	28'	\$616.00
140 Mil Woven Vinyl Flooring	16'	\$591.20	20'	\$739.00	24'	\$886.80	28'	\$1034.60



Carpet & Vinyl Adhesive \$36.95 per gallon

Low odor, can be used indoors, goes on thick, spread with a 1/8" V notched trowel. One gallon covers approximately 8'6" x 10'. Guaranteed when used on our CCA decking; works with our carpet and vinyl flooring.

Trowel for glue \$7.50



1/8" V notched trowel designed for applying our glue to your deck.

Deck Seam Tape \$20



50' roll, Seals the underside of your decking where two sheets meet.

Marine Grade Decking 4' x 8' \$125.00, 4' x 8'6" \$145.00 each + shipping

3/4" thick, 7 ply, CCA treated, smooth top surface with any voids filled and sanded flat. Each sheet is treated then kiln dried. Glue will stick and the sheets will not warp, plies will not delaminate, 50 year warranty.

Our decking is the same as used by new boat builders.

**Decking is a commodity so prices do fluctuate, call to confirm pricing.*

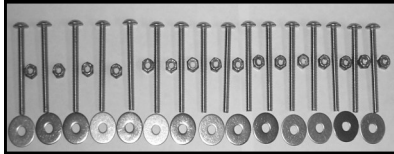


COMPLETE PONTOON REDECK PACKAGES

Everything needed except the carpet or vinyl; Decking, Glue, Deck Tape, Fence Bolts, Risers, & Hardware

	8' Wide	8'6" Wide
16' Re-Deck Kit 4 sheets of decking, 2 gal. glue, seam tape, deck and fence hardware	\$674.35	\$754.35
20' Re-Deck Kit 5 sheets of decking, 2 gal. glue, seam tape, deck and fence hardware	\$799.35	\$899.35
24' Re-Deck Kit 6 sheets of decking, 3 gal. glue, seam tape, deck and fence hardware	\$961.30	\$1,081.30
28' Re-Deck Kit 7 sheets of decking, 3 gal. glue, seam tape, deck and fence hardware	\$1,086.30	\$1,226.30

3 1/2" Fence Bolt Kit \$19.95



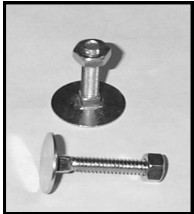
Kit of 26 Stainless Steel 3 1/2" bolts with washers & lock nuts.

Why fight with rusty old nuts & bolts?

4 1/2" Fence Bolt Kit \$21.95

For Crest Pontoons

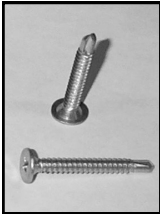
Elevator Bolts



1 1/2" \$49

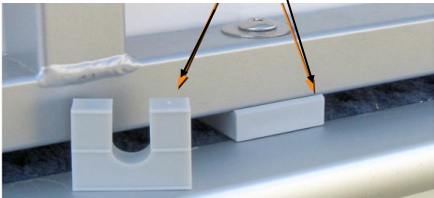
(sold in packs of 100)

Deck Screws



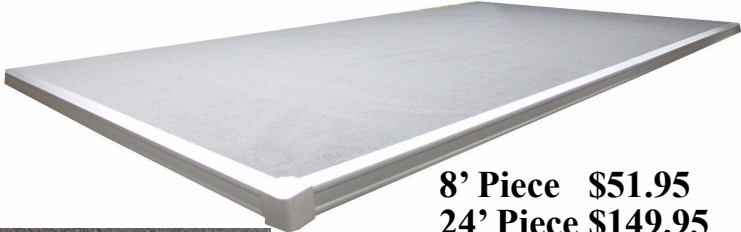
1 3/4" \$49

Fence Riser Kit \$11.50



Kit includes 26 risers. Risers lift fence off the carpet or vinyl floor. *Water runs off, helps to prevent mold & mildew.*

Replacement Pontoon Deck Trim



8' Piece \$51.95
24' Piece \$149.95

2 3/4" x 3 1/4" Anodized Aluminum
Replaces old damaged deck trim.
24' long piece may require additional freight charge do to its size.

Standard Corner Cap \$25

Available in Round or Square



Round Corner Cap



Square Corner Cap

Deluxe Corner Cap \$40

9" radius cast aluminum



Large 13" Round Corner Cap

Pontoon Steering Helm Consoles by PMI

Replacement Pontoon Helms are rotomolded plastic for years of maintenance free use

Premium Standard Helm \$270

27" wide, 33" tall, 16" deep

Premium helms are available in **Gray or Ivory base**, Color coordinated Front panel matches our upholstery.



Easy access thru 21" x 18" panel.
No standing on your head to run controls.



Luxury Standard Helm \$275

27" wide, 33" tall, 16" deep



Luxury helms are available in **Gray or Beige**

Standard 5 Switch Panel \$125



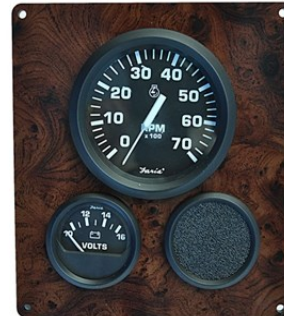
3 Standard switches, 1- 3 way switch for navigation & stern light, & 1- horn switch. 2- 5 amp & 3- 10 amp breakers included.

Standard Steering Wheel \$25.95



Standard black plastic steering wheel. 13½" diameter, three spoke design. Fits any ¾" tapered shaft steering system.

Standard Gauge Panel \$150



Gauge panel has 1 RPM gauge and 1 voltmeter. Also has blank for additional 2" gauge. 6½" wide, 7¼" tall

Large Deluxe Helm Stand for Premium or Luxury Furniture \$375

Available in Beige, Gray, or Ivory colors; dimensions are 42" wide, 40" tall, and 23" deep.



**Shown with optional Gauge Panel, Switch Panel, Glove box, & Steering*



Modern styling, Roto-mold plastic frame. No wood to rot.



Beige



Gray



Ivory

**Optional Blank Plastic Wood Grain Look Panels are available.*

Blank Switch Panel Area Panel: \$15

Blank Gauge Panel Area Panel: \$20

Deluxe Helm 7 Switch Panel \$225



Designed to work perfectly on the Deluxe Helm, Includes 5 standard switches, 1 3-way switch for navigation & stern light, and 1 horn switch. Also includes 1- 12v power adapter, and a dual USB port for charging only. Includes 2- 5 amp, and 5- 10 amp waterproof breakers. Plug & play design for use with our complete wiring harness

Premium Steering Wheel \$119



Faux-wood and leather steering wheel with stainless steel spokes. 15" diameter, fits any ¾" tapered shaft steering system.

Deluxe Helm Gauge Panel \$499



Designed to fit perfectly above the steering wheel on our Deluxe Helm. Includes, digital depth finder with wired transducer to be mounted on back of your pontoon tube, GPS Speedometer, RPM Gauge, and voltmeter. Works with all engines.

LED Courtesy Light \$16.99



Available in white or blue, waterproof LED light is perfect to add small amounts of accent light around the helm stand or under a bench. 1¾" wide, ½" tall, and only uses ¾ watts.

Pontoon Glove Box \$35



Locking glove box for your helm. 4¾" tall, 11¾" wide, 6¾" deep.

Pontoon Wiring Harness \$125



Snaps into our switch panel, but adapts to many existing systems. Hooks up for red & green bow lights, stern light, docking lights, horn, and live well aerator. Fits up to a 28' pontoon.

Premium Furniture Groupings *by PMI*

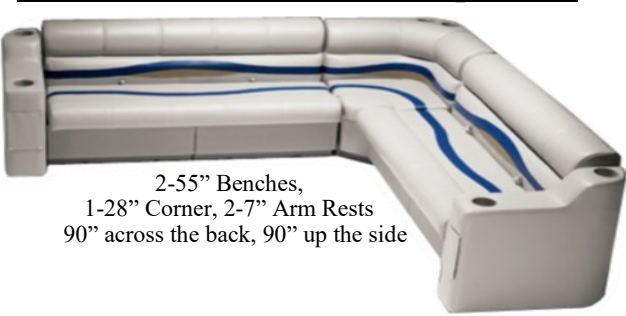
Premium Stern Furniture Groupings for 8' wide Pontoons

90" Straight Stern Group \$1028



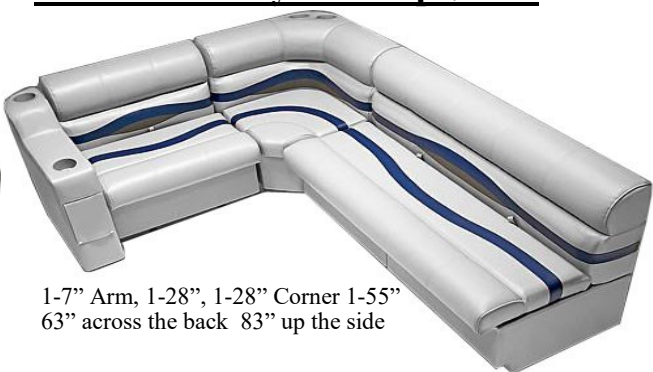
2-38" Benches, 1-L 1-R 7" Arm rest

90" Standard Stern L Group \$1697



2-55" Benches,
1-28" Corner, 2-7" Arm Rests
90" across the back, 90" up the side

63" Stern Entry L Group \$1432



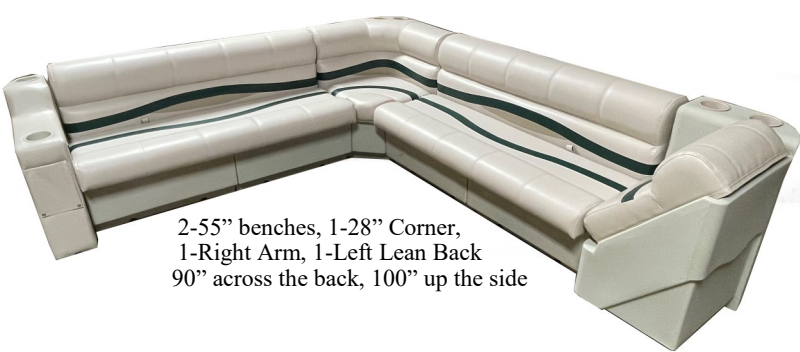
1-7" Arm, 1-28", 1-28" Corner 1-55"
63" across the back 83" up the side

Complete 90" L Stern Group \$2286



2-55", 1-28" Corner, Pair of 7" arms (1-R 1-L), Standard Helm & Bucket

100" Stern L Lean Back Group \$1891



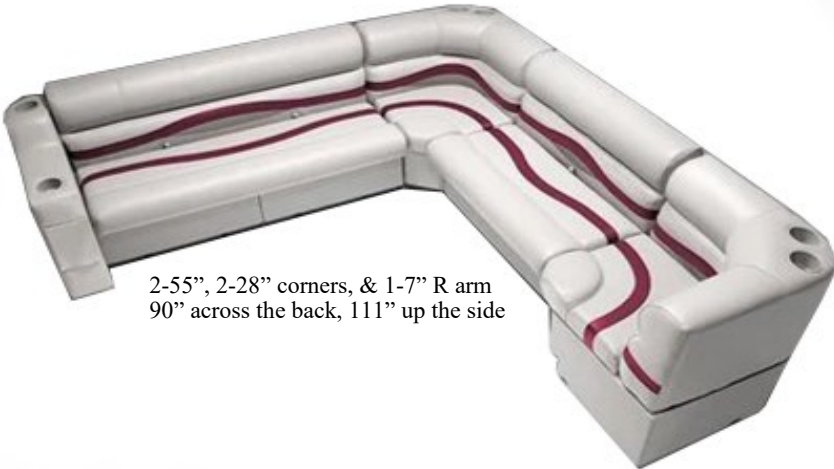
2-55" benches, 1-28" Corner,
1-Right Arm, 1-Left Lean Back
90" across the back, 100" up the side

Complete 90" Straight Stern Group \$1956



2-38", Pair of 7" arms, (1R 1-L), Flip Flop, Standard Helm & Bucket

111" Stern 2-Corner L Group \$2021



2-55", 2-28" corners, & 1-7" R arm
90" across the back, 111" up the side

Premium Furniture Bow Groupings

Bow Lean Back Groups

55" Bow Lean Back Group \$708
72" Bow Lean Back Group \$828



Left Lean back shown

55" Group is 1-38", 1- L or R Lean Back
72" Group is 1-55", 1- L or R Lean Back

**Specify Left or Right Lean Back*

***add a arm rest for only \$105 more to complete the group*

Bow Double Corner Groups

84" 2-CNR Group \$1237
94" 2-CNR Group \$1267
111" 2-CNR Group \$1387



84" Group is 2-28" corners, 1-28"
94" Group is 2-28" corners, 1-38"
111" Group is 2-28" corners, 1-55"

Bow Arm Groups

35" Arm Group \$484
45" Arm Group \$514
62" Arm Group \$634



Right arm shown

35" Group is 1-28", 1-7" Arm
45" Group is 1-38", 1-7" Arm
62" Group is 1-55", 1-7" Arm

Bow Corner Groups

63" 1-CNR Group \$913
73" 1-CNR Group \$943
90" 1-CNR Group \$1063



63" Group is 1-28" corner, 1-28", 1-7" arm
73" Group is 1-28" corner, 1-38", 1-7" arm
90" Group is 1-28" corner, 1-55", 1-7" arm

Premium Stern Furniture Groupings for 8'6" wide Pontoons

94" Stern L Lean Back Group \$2095



**For 8'6" wide Pontoons*
1-38", 2-28" corner, 1-55", & 1-L lean back

94" Straight Stern Group \$1028



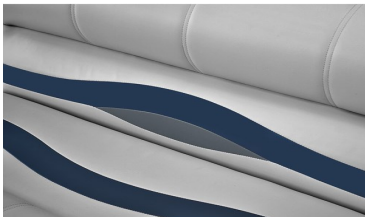
**for 8'6" wide pontoons*
2-28" Corners, 1-38" Bench

94" Standard Stern L Group \$1697

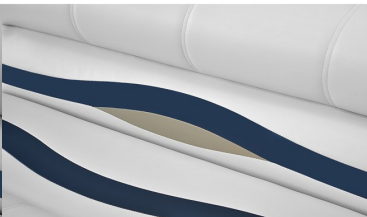


1-38", 1-55", 2-corners, & 1-7" L arm
94" across the back, 90" up the side
**for 8'6" wide pontoons*

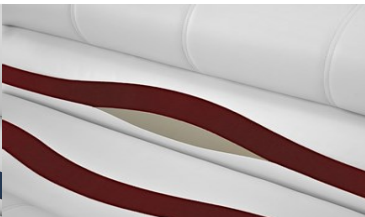
Available Colors for Premium Furniture



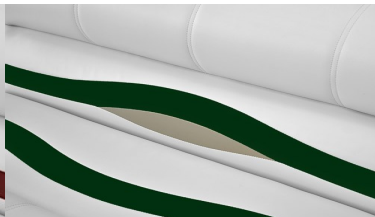
Gray, Blue, & Charcoal



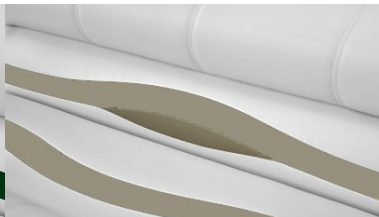
Ivory, Blue, & Tan



Ivory, Burgundy, & Tan



Ivory, Green, & Tan



Ivory, Tan, & Beige

Premium Pontoon Furniture *by PMI*

Seats you can buy with confidence: no fading, no torn seams (UV stitching), **3 year warranty.**

28" Bench \$379



DM-28 is 28" wide, 30" tall, 28" deep

38" Bench \$409



DM-38 is 38" wide, 30" tall, 28" deep

55" Bench \$529



DM-55 is 55" wide, 30" tall, 28" deep

28" Standard Corner \$429



DM-28 CNR has a 8" Standard Radius, 28" wide

30" Radius Corner \$469



DM-30 CNR has a 30" Large Radius, 30" wide
DM-36 CNR has a 36" Large Radius, 36" wide

36" Radius Corner \$509



DM-30 CNR

DM-36 CNR

Folding Seat \$99



No pinch
safety hinge

19" tall, 17" wide, 16" deep
Available in all colors

Premium Bucket \$319



Available in Ivory or Gray
*Requires Sliding Pedestal

22" tall, 20" wide, 21½" deep

Premium Recliner \$419



Available in Ivory or Gray
*Requires Sliding Pedestal

31" tall, 24" wide, 23" deep

Lean Back \$299

Contoured Left or Right w/ 8" radius



DM-LB

33" tall, 17" wide, 27" deep
Left or Right lean backs and arms are determined by which arm will rest on the seat arm or lean back when sitting on the bench.

Flip Flop Bench \$339



DM-FF

33" tall seat, 32.5" wide, 27" deep

Flip flop can also be used as helm seat.

Portable Cup Holders \$40



2 cup holders

Seat Arm \$105

Contoured Left or Right.



Easy access for installing bench arms. Arms without access holes are almost impossible to fasten to free standing benches.

28" tall, 7" wide, 27" deep

What's in a Seat Base?

Our bases are molded plastic frames with stainless steel hinges and hardware. No wood to rot in any of our seats; even our economy fishing seats have plastic bottoms and safety hinges. We use the same kind of seat bases you'll find only on new boats.

All of our bases carry a lifetime warranty

Luxury Pontoon Furniture *by PMI*

32 oz. vinyl with UV protectant & mildew inhibitor built in, virgin high density foam, 5 year warranty
Elegant top of the line, modern styling pontoon furniture with diamond cross-stitched inlay highlights.
Unique ergonomic design with plush top pillow will keep you comfortable for hours of fun on the water.

28" Bench \$430



27½" wide, 30" tall, 28" deep

38" Bench \$480



38" wide, 30" tall, 28" deep

55" Bench \$615



55" wide, 30" tall, 28" deep

28" Corner Bench \$495



Includes 2 stainless steel cupholders



8" Radius Corner

30" Corner Bench \$539



30" & 36" corners do not have cupholders

36" Corner Bench \$569



30" Radius Corner

36" Radius Corner

Left or Right Lean Back \$375

7" Left / Right Arm \$119



28" tall, 7" wide, 27" deep



Fully upholstered base & cushion
Includes 2 stainless cup holders
33" tall, 17" wide, 27" deep



Flip/Flop Bench \$389



2 part bottom cushion opens
from middle for extra storage

33" tall seat, 32½" wide, 27" deep

Luxury Recliner \$470



31" tall, 24" wide, 23" deep
Reclining with foldable arms

**Requires sliding pedestal to mount*

Luxury Bucket \$359



22" tall, 20" wide, 21½" deep
Non-Reclining with foldable arms
**Requires sliding pedestal to mount*

Luxury Folding Seat \$110



Luxury Cup Holder \$50



8" wide, 12" long. Use on any bench

Luxury Furniture Groupings by PMI

Luxury 8” Radius Bow Furniture Groupings

Groups are labeled with the length needed for installation

Bow Corner Lean Back Groups

73” 28CNR LB Group	\$1300
83” 28CNR LB Group	\$1350
100” 28CNR LB Group	\$1485



*Specify left or right Lean back when you order.
Left Lean back shown

Bow Corner with Arm Group

63” CNR Arm Group	\$1044
73” CNR Arm Group	\$1094
90” CNR Arm Group	\$1229



Specify left or right arm when you order

Bow Double Arm Groups

42” 2-Arm Group	\$668
52” 2-Arm Group	\$718
69” 2-Arm Group	\$853



Bow Double Corner Groups

84” Bow 2-CNR Group	\$1420
94” Bow 2-CNR Group	\$1470
111” Bow 2-CNR Group	\$1605



Bow Single Arm Groups

35” 1-Arm Group	\$549
45” 1-Arm Group	\$599
62” 1-Arm Group	\$734



*Specify left or right arm when you order.
Left arm shown

Bow Lean Back Groups

52” Lean Back Group	\$924
62” Lean Back Group	\$974
79” Lean Back Group	\$1109



*Specify left or right Lean Back when you order.
Left Lean Back shown

Luxury 30” Radius Bow Furniture Groupings

36” Radius front corners are also available, will add 6” in length to group, and \$30 to cost

Large Bow Radius Corner Lean Back Groups

75” 30CNR Lean Back Group	\$1344
85” 30CNR Lean Back Group	\$1394
102” 30CNR Lean Back Group	\$1529



*Specify left or right Lean back when you order.
Left Lean back shown

Large Bow Radius Double Corner Groups

86” 30/28 CNR Group	\$1464
96” 30/28 CNR Group	\$1514
113” 30/28 CNR Group	\$1649



30” Corner up front, 28” corner in the rear of group.

Luxury Furniture Stern Groupings *by PMI*

Luxury Stern Furniture Groupings for 8' wide Pontoons

100" Stern L Lean Back Group \$2219

2- 55", 1-corner, & 1 7" R arm, & L Lean Back



90" wide in stern
100" up the side

90" Standard Stern L Group \$1963

2- 55", 1-corner, & 2 7" arms (1-L & 1-R)



90" wide in stern
90" up the side

94" Double Corner L Group \$2204

1-R arm, 1-55", 1-28" corner, 1-38", 1-28" corner



90" wide in stern
94" up the side

66" Stern Entry L Group \$1709

1-38", 1-55", 1-28" Corner, & 1-7" Left Arm



66" wide in stern
90" up the side

111" Double Corner L Group \$2339

1-R arm, 1-55", 1-28" corner, 1-55", 1-28" corner



90" wide in stern
111" up the side

Standard 8' Straight Stern \$1198

2-38" & 2-7" arms (1-L & 1-R)



90" wide in stern

Luxury Stern Furniture Groupings for 8'6" wide Pontoons

8'6" Stern L Lean Back Group \$2460

1- 38 Bench", 2-28" corners, 55" Bench & L Lean Back



94" wide in stern
100" up the side

8'6" Standard Stern L Group \$2204

1- 55", 1-38" bench 2-28" corners, & 1 7" Left arm



94" wide in stern
90" up the side

Standard 8'6" Straight Stern \$1470

1-38" Bench & 2-28" Corners



94" wide in stern

8'6" Double Corner L Group \$2580

1-28" corner, 1-38", 1-28" corner, 1-55", 1-28" corner



94" wide in stern
111" up the side

Our Luxury 32 oz. Marine Grade vinyl has UV Protectant and Mildew inhibitor built right into the vinyl. When we claim that our vinyl is 32 ounce, it really is 32 ounce *not something less*. We use only virgin foam that stays firm for years. Luxury collection has a soft upper pillow allowing for superior comfort for everyone, making your time on the water that much more enjoyable. Diamond cross-stitch design gives the modern look you want, with the price that everyone can afford. ***PMI Luxury Furniture has a 5 year warranty.***

Bimini Top Parts & Replacement Pontoon Fence

Replace your old worn out Pontoon Bimini Top with our OEM Grade Fabric.

Available in Black, Blue, Burgundy, Gray, Green, Navy, Tan, & Teal

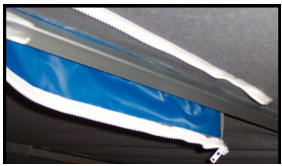
OEM Grade 8.8oz solution dyed polyester fabric, with mildew inhibitor. Includes storage boot at no extra charge.

Fabric has a five year no fade warranty.

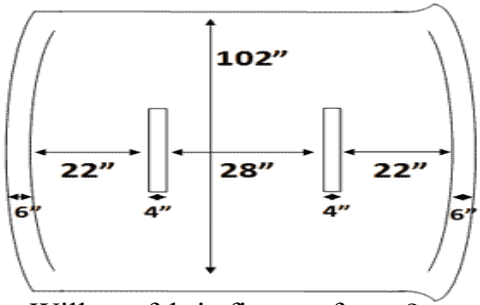
Universal Fit 8'x8' Fabric \$239



8' Universal top will fit most 88" to 92" wide,



Universal fabric ZIPS over bows. There is enough "give" in the sleeves to fit most frames.



Will our fabric fit your frame? Check your measurements above.

Universal replacement fabric will fit most 4-bow, 8'x8' frames. Each manufacturer has a slightly different frame. Our top attaches to the frame with four zippers. If the fabric doesn't fit perfectly, simply re-adjust the bows by moving the position of the jaw slides.

Hard to Find Parts and Accessories for Pontoon Bimini Tops

Adjustable Aluminum Strut Bars \$65



Replace front web straps with the durability of aluminum strut bars. Fully adjustable from 29" to 34" in length with aluminum mounting hardware.



Replacement Bimini Storage Boot



Full length zipper; has a hole for a stern light.

8'x8' Boot \$45
8'x10' Boot \$55
8'6"x10' Boot \$65
Made from the same 8.8oz material that our Deluxe bimini fabrics are made from.

LED Stern Light \$35



Replace old stern lights with modern LED technology. Guaranteed for 50,000 hours. Two mile 360° Visibility. USCG Approved

LED Accent Lights \$39.95



Four- 24" LED accent lights with 3M self adhering tape mounted on the back.

Strap Kit \$14.50



5' long by 1" wide

Mounting Kit \$39.95



Complete kit (4) of our High Rise brackets and hardware. Raises bimini frame 4" above rail.

Fence Parts & Components

Aluminum Replacement Fence Paneling

Smooth finish, paint on both sides. All panel is .032" thick, the same as new boats. Has a baked on enamel finish on both sides, clear coat protects finish.

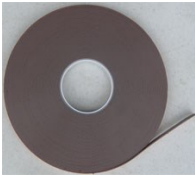
Available in Gloss Black, Metallic Bronze, Indigo Blue, Wineberry (Burgundy), Metallic White, & Champagne



16½" Tall, 20' Long \$115
24¾" Tall, 20' Long \$175
33" Tall, 20' Long \$235



Double Sided Fence Tape \$38.99



Doubled sided VHB tape is used to adhere new fence panel to existing railing. The same tape used to badge new vehicles.



Fence Foam Tape \$12.50

Use between panel and aluminum lip of railing to keep new panel tight and prevent rattling. 100' per roll

Pontoon Fence Graphics \$99



Navy/Smoke, Navy/Tan, Burgundy/Smoke, Burgundy/Tan, Green/Smoke, Green/Tan, Red/Smoke, Red/Tan, Smoke/Smoke, or Smoke/Tan. Replace the fence panel and graphics and friends will think you bought a new boat. Kit includes four 115" long sweeps, four 52" long swooshes, and squeegee.

Pinch Guards for Pontoon Gates \$10.99



Prevents fingers from getting trapped above the hinge. Kit includes hardware for three gates.

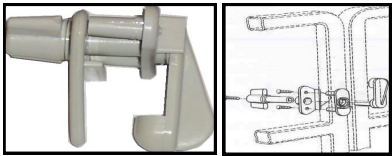
Vinyl Gimp Trim \$75

150' long, used to cover sharp edges on fence panel when you do not have the aluminum trim on the railing.

Available in Gray or Almond



Gate Latch \$12.99



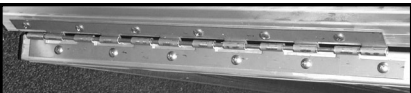
Bolts thru gate & securely fastens against the fence.

18" Piano Hinge \$10.50



Aluminum hinge for use with standard gate latch system.

18" Slip Hinge \$17.50



Stainless steel "slip" hinge for lift-lock style pontoon gates.

Gate Stop \$5.00

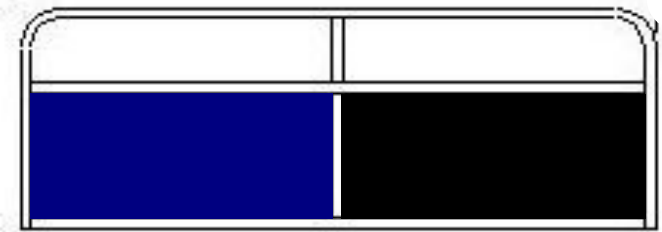


Used with slip hinges and holds the gate in place. Can be used on either side, no left or right confusion.

Pontoon Fence Components

Our fence is not "universal" replacement fence. That is, it may not specifically match your original Crest, SunCruiser, Godfrey, or Bennington pontoon fence. However, we may be able to get "close".

Straight Fence Pieces



48" \$200 72" \$225 92" \$265

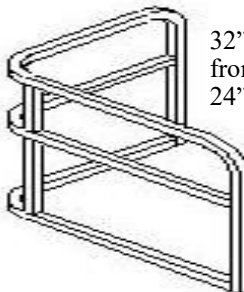
Fence Gates



20", 24", 28" \$105
30", 32", 34" \$110

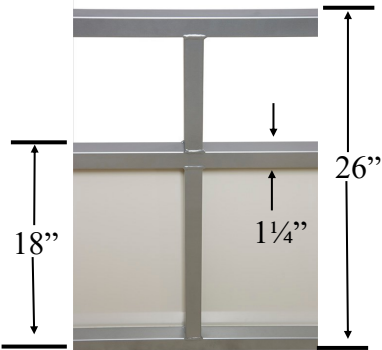
*Gates are ½" shorter than fence (25½" tall) to allow them to swing.

Corners Left or Right



32" across the front or back, 24" up the side

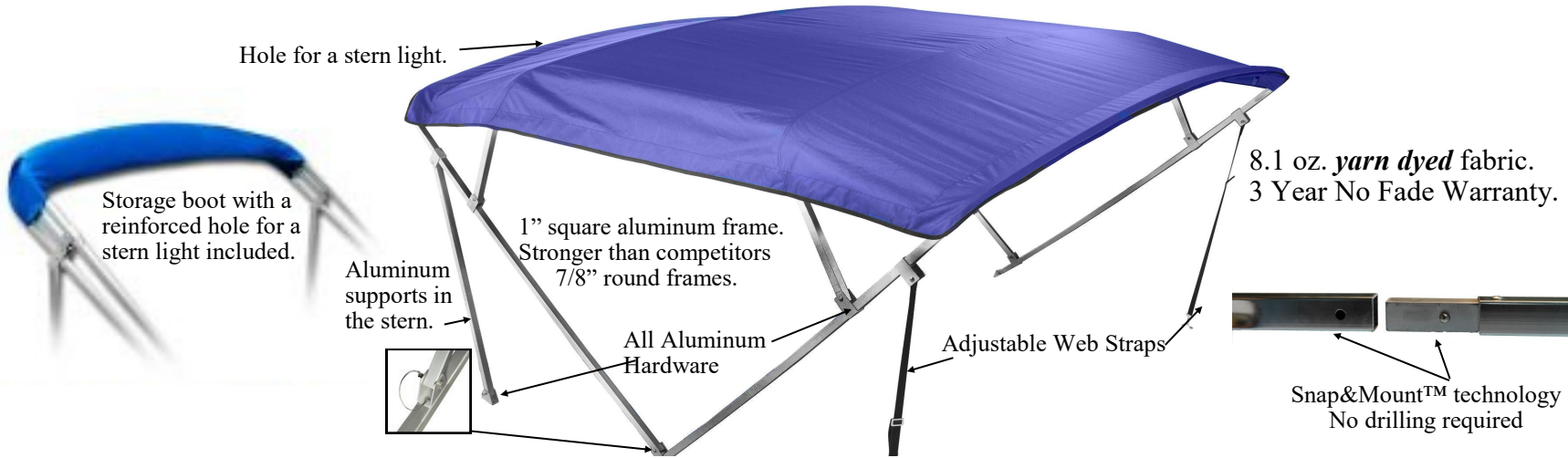
\$265 specify L or R and panel on inside or outside



For additional information on complete fence packages, see FenceForPontoons.com

8' Complete Economy Bimini Top \$319

Economy Tops Snap together in minutes with our exclusive Snap&Mount™ technology.



8' x 8', 4 Bow Economy Pontoon Top fits boats with 8' wide decks. 1" Snap&Mount™ square frame with mounting hardware included. Top installs with four zippers. Stern Supports and Storage Boot are Standard. Front secured with straps. The pontoon top fabric mounts with zippers, less hassle with assembly, and zips off for winter storage. The frame snaps together in minutes.

Available in Blue, Burgundy, Gray, Green, Navy, Tan, & Teal

Complete OEM Grade Deluxe Bimini Top Packages

8' DELUXE Complete Package \$525

10' DELUXE Complete Package \$625

Everything you need to put a new top on a pontoon boat, except the stern light.



- 1¼" square anodized frame
- H.D. anodized aluminum fittings
- Top zips over frame for easy on/off
- Reinforced hole for stern light
- Storage boot standard
- Front & Stern aluminum support bars
- **The strongest frame available.*
- Wiring for an optional stern light

8'6" wide 10' DELUXE Complete Package \$650
All features of the "regular" 8' wide x 10' top, but **8'6" wide**
Many newer pontoons are 8'6" wide, along with a few older JC's and Crests.



Zip On-Zip Off for easy cleaning or storage.
8.8 oz. **Solution Dyed Fabric**
5 Year No Fade Warranty



Frame assembles in minutes with our **Snap&Mount™** snap-button design. No drilling or cutting required.

Available in Black, Blue, Burgundy, Gray, Green, Navy, Tan, & Teal

Sure Shade Power Bimini Kit (formally the PWR Arm II) Raises/Lowers at the Touch of a Button



Fits 8' or 8'6" wide fence. Top is 10' Long, Mounts best on 1¼" fence



The Power Bimini is made by a different manufacturer than our Economy or Deluxe Package tops. But it has excellent features like the zip-on and off fabric. A strong 1¼" frame and all aluminum hardware. If you put your pontoon on a boat hoist with a canopy or boat on a body of water that has low bridges, the Power Bimini offers a real benefit.

Remote and RF receiver is available for true hands free operation, add \$155

Fabric Available in Black, Blue, Burgundy, Gray, Green, Navy, & Tan

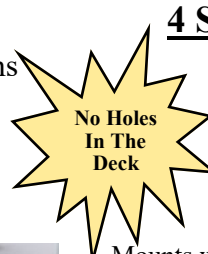
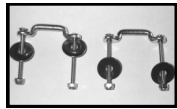
Pontoon Ladders & Dock Parts

4 Step Aluminum Folding Ladder \$139



Mounting Hardware \$10.50

Allows for extra mounting locations



Mounts with "key" fitting.
NO holes to cut in the floor.



Folds to 30"x16"
for easy storage

39"



Mounts into key holes installed on the floor. Rated up to 150 lbs.

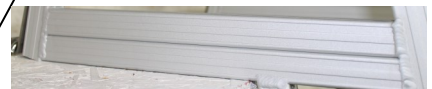
Pontoon or Dock Ladders

Use them on the front of the pontoon deck and also on the dock. Rated up to 400 lbs.

Mounts with LAK.



Reinforced frame. Two 1" bars together.



3 step extends 36" below the deck \$139

4 step extends 46" below the deck \$159

5 step extends 56" below the deck \$189

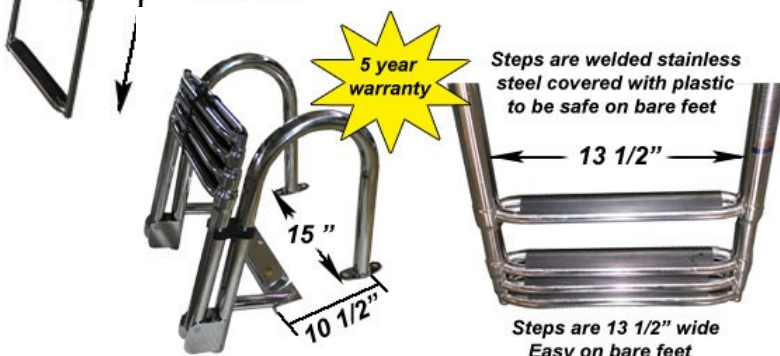


5 Step Economy Telescoping Stern Ladder \$239



5 step (extends 44" below the deck) stainless steel construction. Replaces specialty stern entry OEM aluminum pontoon ladders. Can be used anywhere on your boat or dock. Rated up to 300 lbs.

4 Step HD Telescoping Stern Ladder \$309



1 1/2" round tube frame, folds out of the way on pontoons. Four large telescoping steps, extends deep into the water 48" and steps are 13 1/2" wide. This is the same ladder used on new pontoon boats. Rated up to 400 lbs., use on your pontoon or on your dock.

Under-Deck 5 Step Ladder \$259



Five step extends 59" below the deck. Rated up to 300 lbs. Stows under the pontoon deck when not in use. Pulls out at an angle for easy boarding.

Torpedo Bumpers for dock \$26.95



Available in Black, White, & Blue. High gloss molded polypropylene. Sharp appearance, worth the money. High Strength molded polypropylene. Absorbs shocks, last for years. UV inhibitors and color throughout. Won't fade or lose color by abrasion. Air filled for superior protection for all boats.



30" Heavy-Duty Dock Bumper \$29.95

REAL Protection for your pontoon.

High impact poly resin bumper, 30" tall. Mounting hole slides over 2" pier pipe. Includes stainless steel hardware to secure to pier pipe. **WHITE** only.

