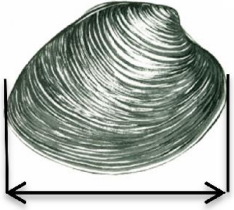


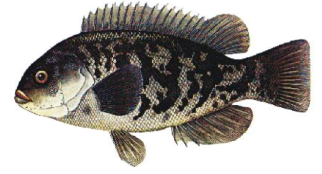
ATTENTION ANGLERS

2016 NJ Recreational Minimum Size, Possession Limits & Seasons



Hard Clam 1.5 inches
Recreational Limit – 150 clams
No harvest on Sunday
Shellfish license required

- Fish are measured from the tip of the snout to tip of the tail (except Black Sea Bass and Sharks).
- Cleaning or filleting of fish with a minimum size limit while at sea is prohibited. See the Marine edition of the Fish & Wildlife Digest or the Fish & Wildlife website for exceptions.



Tautog 15 inches
4 fish Jan. 1 – Feb. 28
4 fish Apr. 1 – Apr. 30
1 fish July 17 – Nov. 15
6 fish Nov. 16 – Dec. 31



Striped Bass or Hybrid Striped Bass

1 fish at 28 inches to less than 43 inches

1 fish at 43 inches or greater

See Digest for Striped Bass Bonus Program

Del. River and tributaries Calhoun St. Bridge, Trenton to Salem River and tributaries

Open Mar. 1 – Mar. 31 & June 1 – Dec. 31

Atlantic Ocean

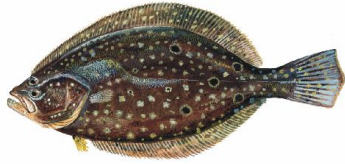
- 0-3 miles from shore, no closed season
- Greater than 3 miles from shore, closed

All other marine waters, open Mar. 1 – Dec. 31



Winter Flounder
2 fish at 12 inches

Open Season: Mar. 1 – Dec. 31



Summer Flounder (Fluke)

Del. Bay and Tributaries 4 Fish at 17 Inches

All Other Marine Waters 5 fish at 18 inches

See Digest for Island Beach State Park Program

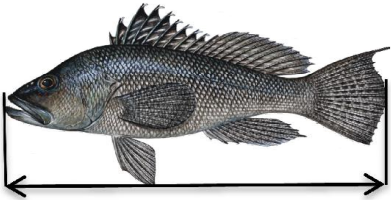
Open Season: May 21 – Sept. 25



Weakfish

1 fish at 13 inches

Open Season: Jan. 1 – Dec. 31

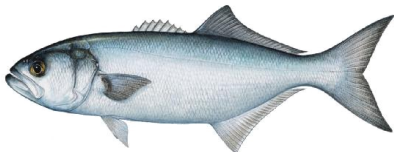


Black Sea Bass

10 fish at 12.5 inches May 23 – June 19

2 fish at 12.5 inches July 1 – August 31

15 fish at 13 inches Oct. 22 – Dec. 31



Bluefish

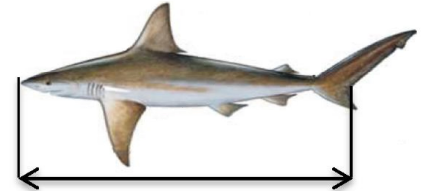
15 fish; No Minimum Size

Open Season: Jan. 1 – Dec. 31

PROHIBITED SPECIES

See the Marine edition of the NJ Fish & Wildlife Digest or Fish & Wildlife's website for a complete list.

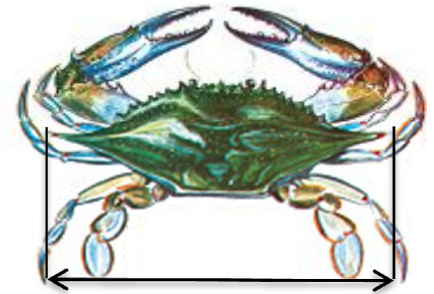
Other Species	Possession Limit	Total Length
American Eel	25	9"
Black Drum	3	16"
Cod	No Limit	21"
Haddock	No Limit	21"
Pollock	No Limit	19"
King Mackerel	3	23"
Red Drum	1	18-27"
River Herring	CLOSED	N/A
Scup (Porgy)	50	9"
<ul style="list-style-type: none"> • Open Season: Jan. 1 – Feb. 28 & Jul. 1 – Dec. 31 		
Shad	6	No Limit
<ul style="list-style-type: none"> • Not more than 3 American shad in Del. Bay, River & tributaries • No American shad in all other waters 		
American Lobster	6	3 3/8" to 5 1/4" Carapace Length
<ul style="list-style-type: none"> • Open Season: Jan. 1 - Apr. 29 & June 1 – Dec. 31 		
Jonah Crab	50	4 3/4" Carapace Width



Shark

1 fish per vessel at 54 inches

Seasons: see Marine Digest



Blue Crab

(measured point to point)

Peeler or Shedder – 3 inches

Soft – 3 ½ inches

Hard – 4 ½ inches

Recreation Limit – One Bushel

Crab pot/Trot line Seasons:

Delaware Bay & tributaries

Apr. 6 – Dec. 4

All other waters

Mar. 15 – Nov. 30

Register before fishing! It's free, easy, and required.

SaltwaterRegistry.nj.gov

New Jersey Department of Environmental Protection
 Division of Fish and Wildlife
www.njfishandwildlife.com

Revised 4/29/2016

