

/// Trans-Utility Services

Transformer Field Service



Trans-Utility Services

Field Service has always been a hallmark of Trans-Utility Services, providing the best and most comprehensive service available to ensure that your transformers operate at optimum performance. Trans-Utility Services offers full-service packages which include installation, processing, standard maintenance and specialized services. Trans-Utility Services focuses on preventive maintenance that minimizes future unscheduled maintenance and optimizes the life of the transformer.



Field Service Capabilities

Standard Services

- Oil Processing
- Vacuum Filling
- Hot Oil Degasification
- Transformer Dry Out
- Oil Testing and Analysis
- Dissolved Gas Analysis



Specialized Services

- Cooling Retrofit
- Thermal Upgrade
- Re-gasketing
- Turnkey Installations
- Relocations
- Fullers Earth

Technical Support & Analysis

- Failure Analysis
- Condition Assessment
- Life Assessment



Field Service Capabilities

Maintenance

- Painting
- Re-gasketing
- Re-clamping
- Cooling System Repairs
- Leak Repairs
- Bushing Replacement
- Oil Preservation System
- Replacement Parts



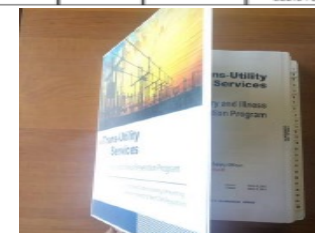
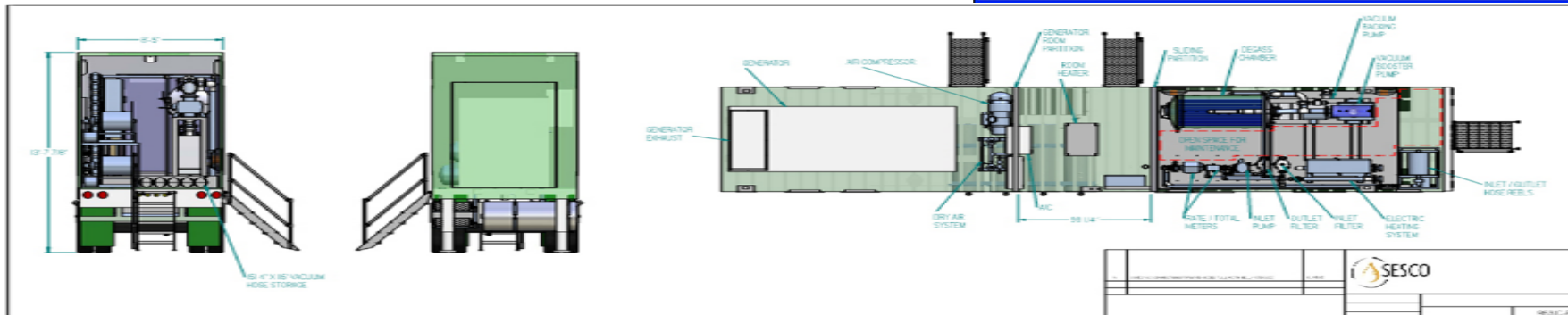
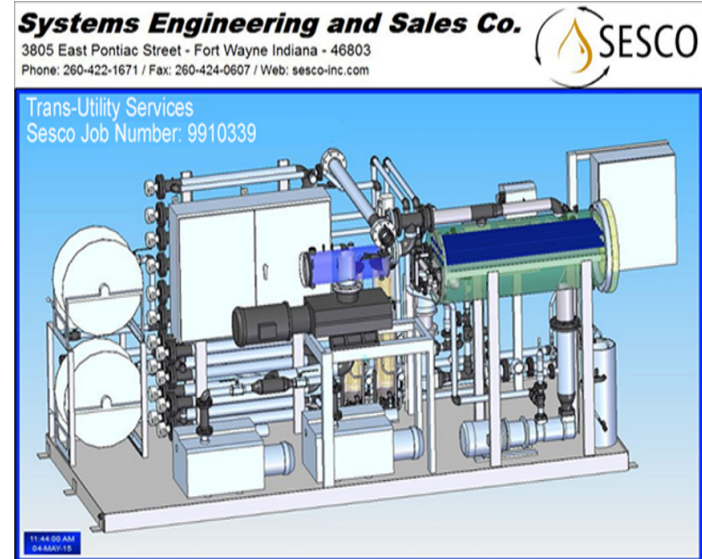
/// Trans-Utility Services

● **Reliable**

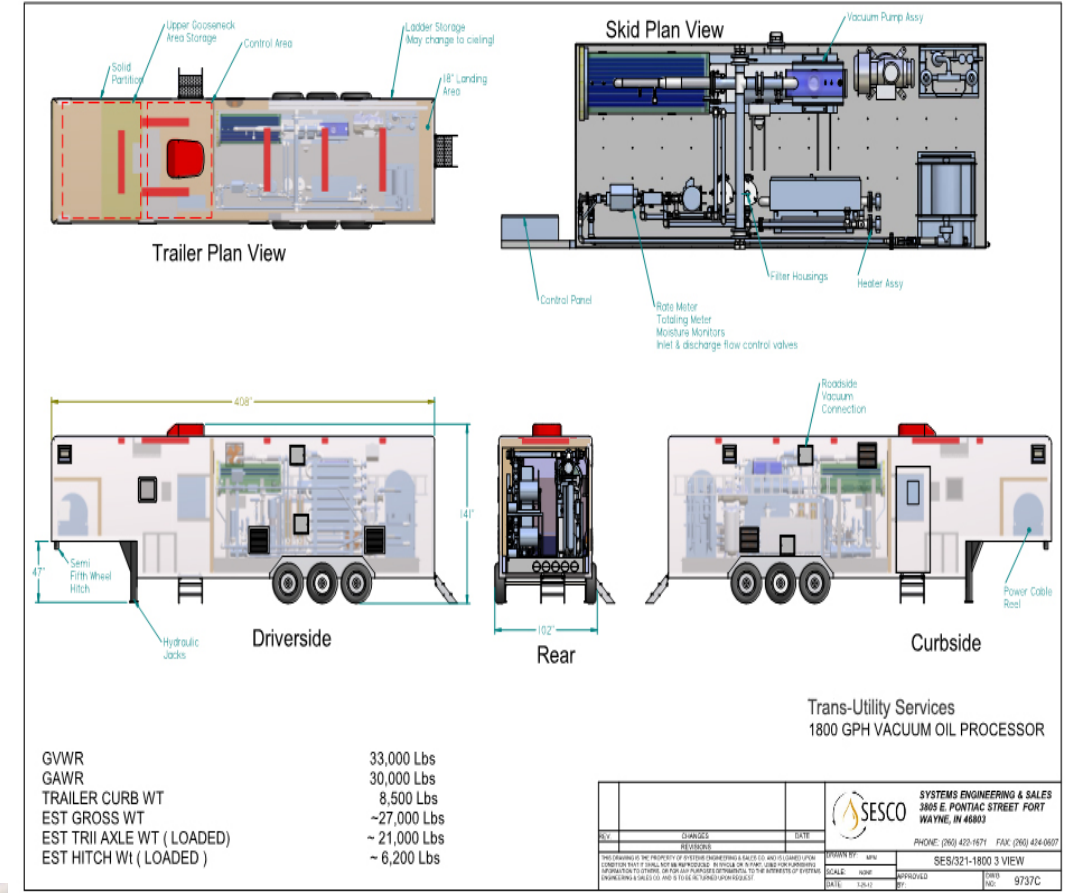
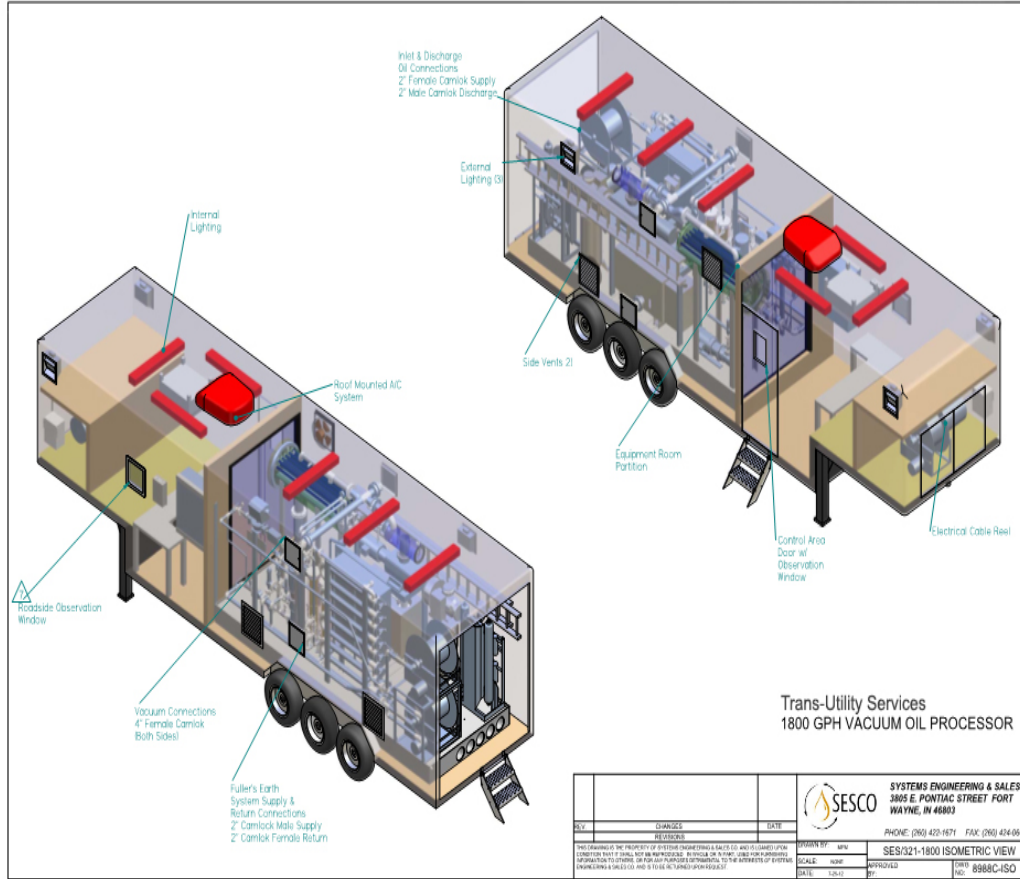
● **Technical**

● **Professional**

● **Sustainable**



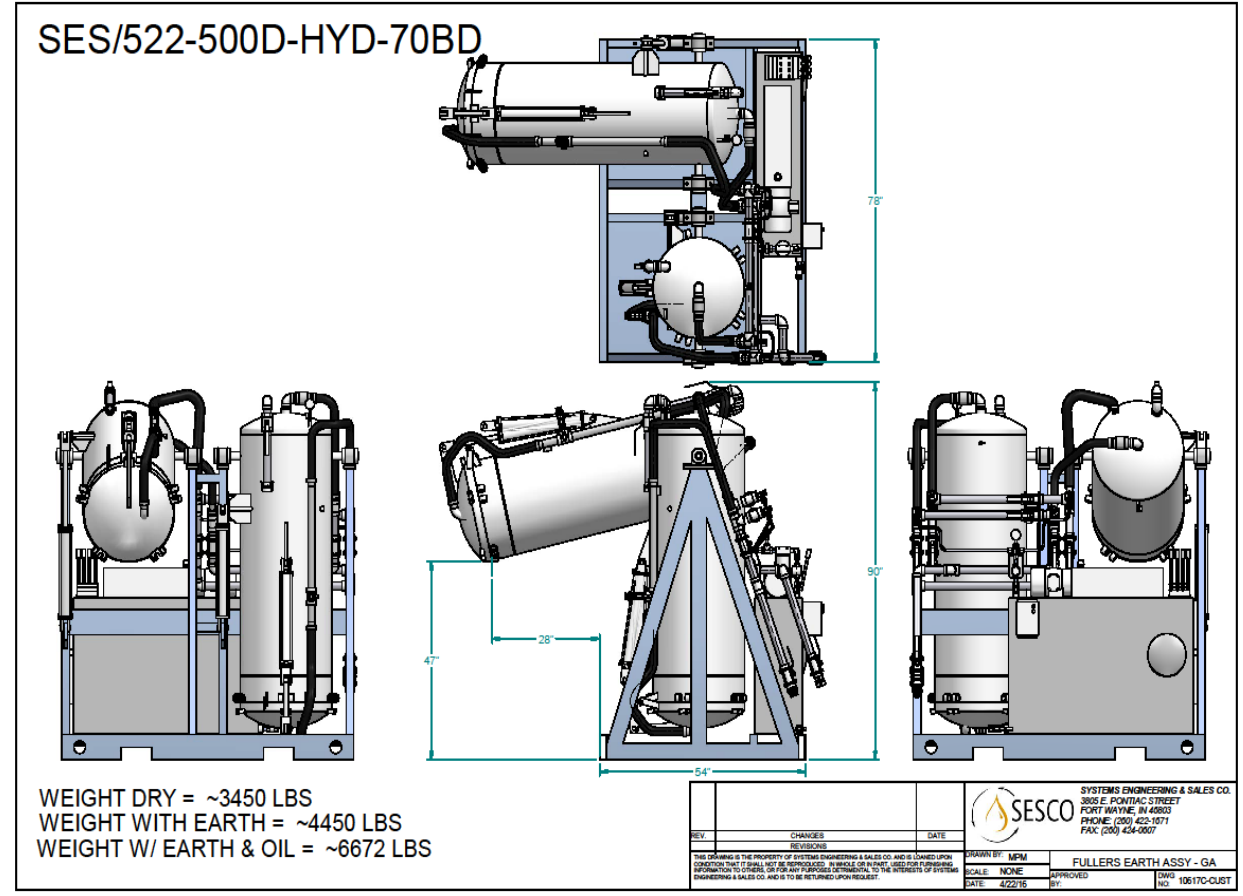
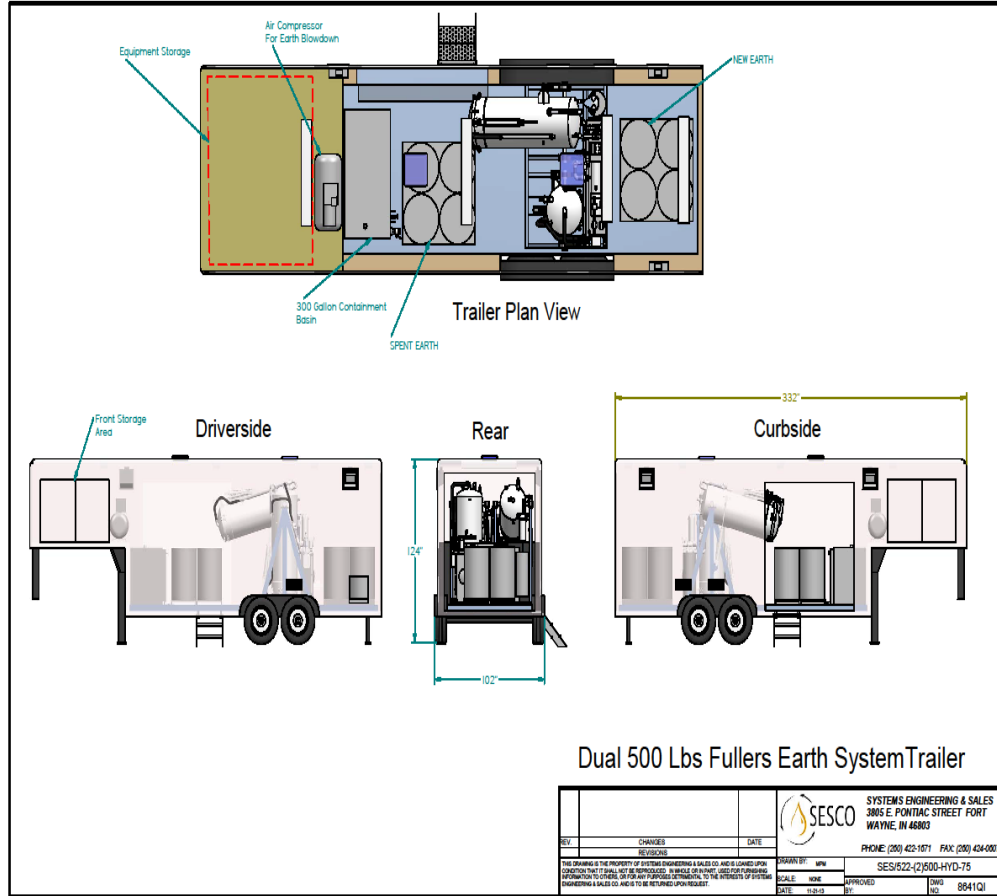
Trans-Utility Services



GVWR 33,000 Lbs
 GAWR 30,000 Lbs
 TRAILER CURB WT 8,500 Lbs
 EST GROSS WT ~27,000 Lbs
 EST TRI AXLE WT (LOADED) ~21,000 Lbs
 EST HITCH WT (LOADED) ~6,200 Lbs



Trans-Utility Services



Trans-Utility Services

OEM Onsite Experience



VIRGINIA TRANSFORMER CORP



Power and productivity
for a better world™



TRANSFORMERS | SERVICE | TRAINING | COMPONENTS



SUNBELT
Transformer®

SANIL



/// **Trans-Utility Services**

- 24-hour response time to emergency needs
- 1.800.796.4570
- **Field Analysis Team**
 - Consists of members from manufacturing, QA, engineering, materials & field service
 - Team meets monthly to analyze findings in the field
 - Feedback allows for better field support
- **Field Personnel**
 - Senior techs with over 150 years of combined experience
 - Salaried field supervisors.
 - Elite team of personnel rotate on field assignments that are specialized in their area of expertise (Assembly, Engineering, Testing)

