

WINDOW REPLACEMENT GUIDELINES

THE BELMONT CONDOMINIUMS

1 BELMONT ROAD

WEST HARWICH, MA

DRAWING INDEX:

C000	COVER SHEET AND DRAWING INDEX
A100	WINDOW ELEVATION
A200	WINDOW DETAILS
A201	WINDOW DETAILS
A202	WINDOW DETAILS
A203	WINDOW DETAILS

NOT FOR CONSTRUCTION

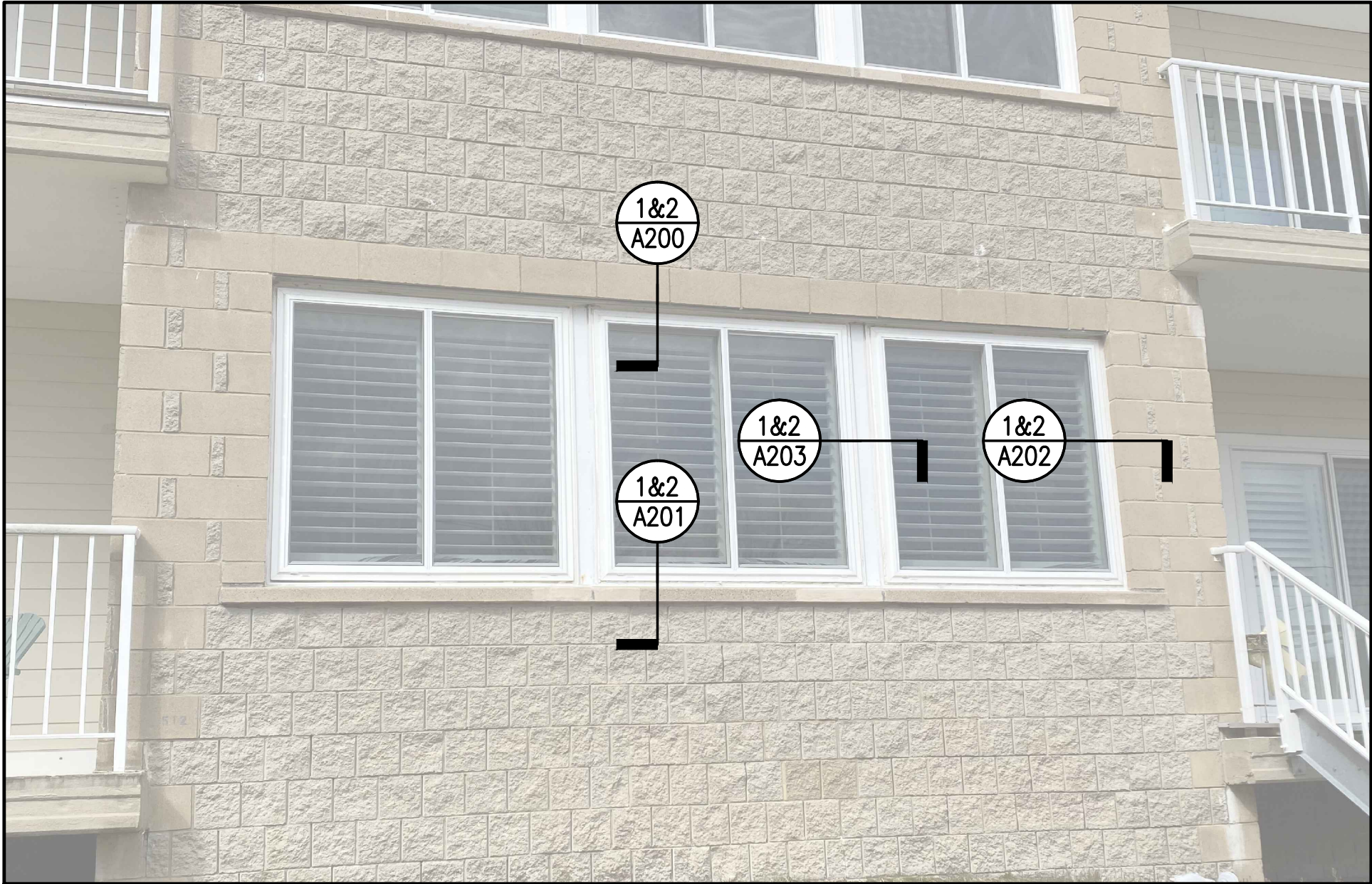
PAC
Consulting

121 Brick Kiln Road, Suite 101
Chelmsford, MA 01824

781-317-1700

Project: WINDOW REPLACEMENT GUIDELINES THE BELMONT CONDOMINIUMS			
Title: COVER SHEET AND DRAWING INDEX			
Drawn: GAS	Checked: DRP	Approved: GAS	Project No.: 210002

Drawing No.: C000
Scale: N/A
Date: 8/12/2021



GENERAL NOTES:

1. Contractor and/or window manufacturer to provide stamped structural calculations demonstrating that the new windows and all attachments meet the wind loads in the current building code. Provide shop drawings showing accurate perimeter conditions and accurate fastener information (material, length, spacing, etc.).
2. Information regarding existing dimensions was obtained by observations and approximate field measurement of two individual units – actual conditions may vary and the details shown herein may need to be modified accordingly. All dimensions, elevations and conditions shall be verified in the field by the Contractor and any discrepancies shall be brought to the attention of the Engineer for clarification before proceeding with the affected part of the work.
3. The drawings are based on the 250 Series vinyl sliding windows with corresponding aluminum receptor frames by Harvey Windows and Doors. Please note that other windows and receptor frames may require slight modifications due to differences in sizes and components.

MATERIALS:

1. Contractor to follow all manufacturer's preparation and installation instructions and recommended application techniques.
2. Contractor to use the following general list of products:

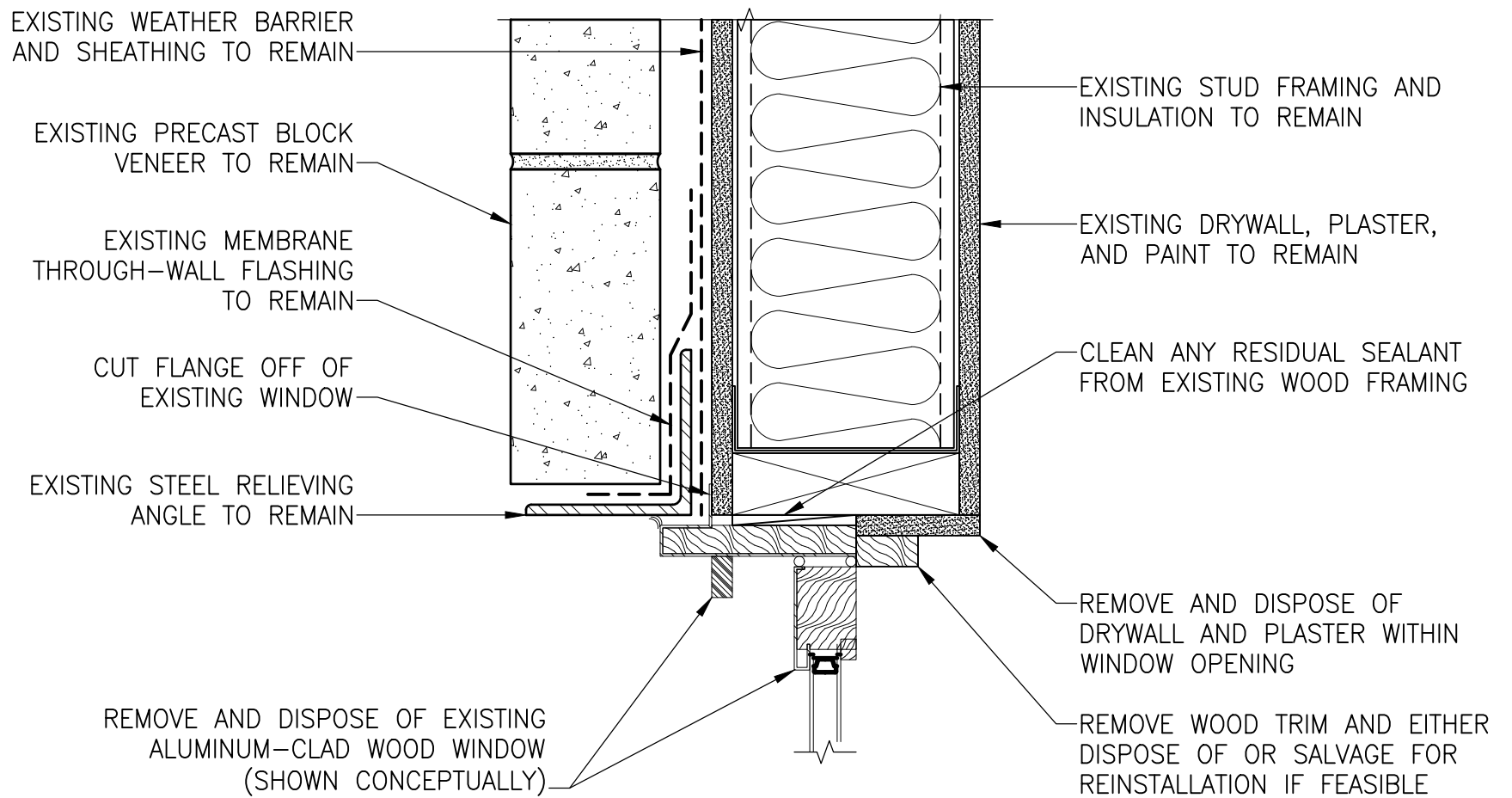
A. Windows and Receptor Frames:	In compliance with The Belmont's approved window list with manufacturer recommended receptor frames that meet current code wind load and industry standard water and air penetration resistances.
B. Self-adhered Wall Flashing Membrane:	Perm-A-Barrier Wall Flashing, 40 mil rubberized asphalt laminated to a 8 mil polyethylene film by GCP Construction Products with all primers and accessories.
C. AL Metal Flashing:	0.040 inch thick, painted with two-coat Kynar finish in color selected by Owner. Provide 0.050 inch thick hook strips where required.
D. Sealant:	Silicone sealant in standard color selected by Owner.
E. Backer Rod:	Closed-cell polyethylene foam rod.
F. Fasteners:	Corrosion resistant; material, size, and spacing per window manufacturer's shop drawings and calculations.
G. Weep Baffle:	Plastic honeycomb or reticulated foam.

1

WINDOW ELEVATION

NOT FOR CONSTRUCTION

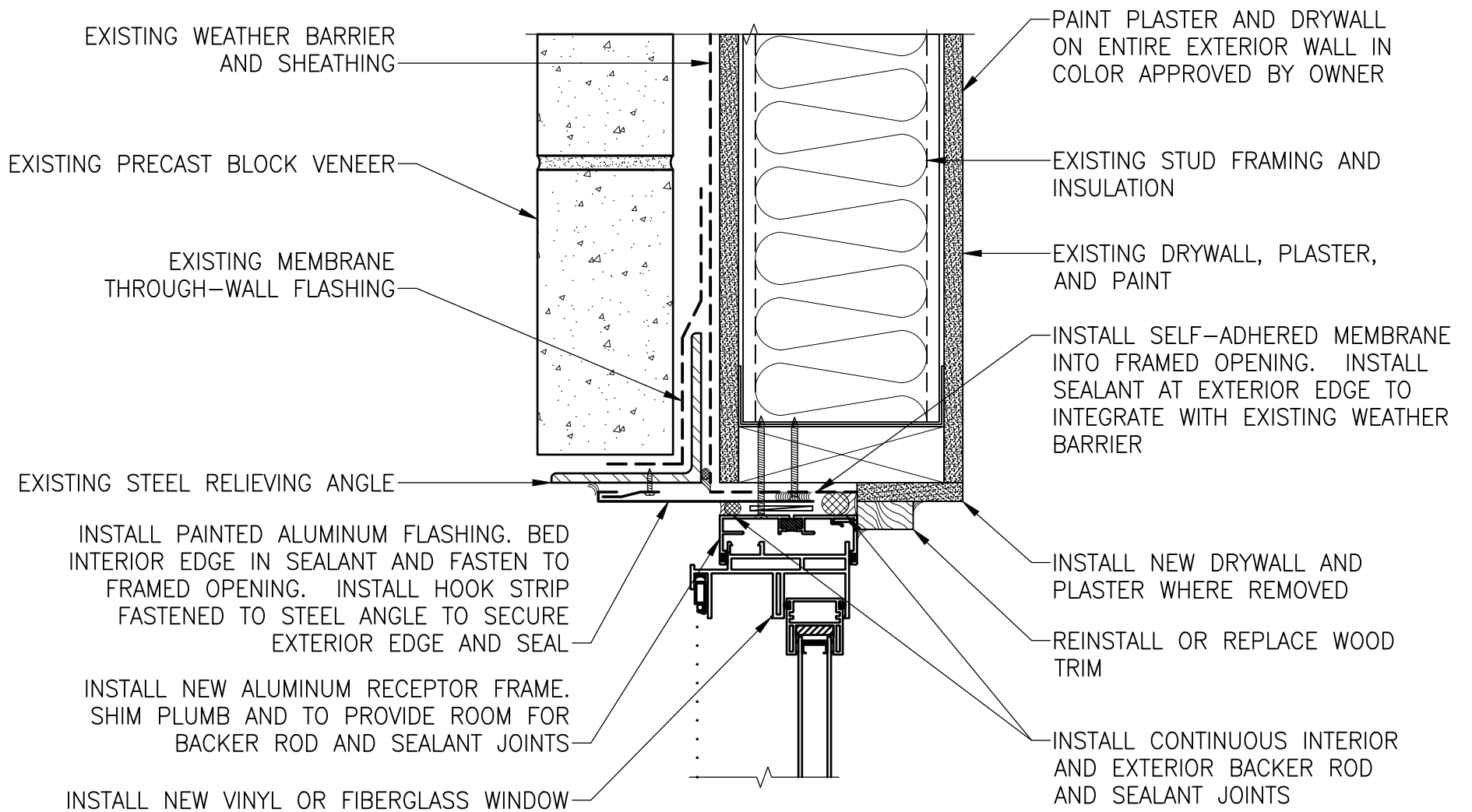
<div><div>PAC</div><div>Consulting</div></div> <div>121 Brick Kiln Road, Suite 101 Chelmsford, MA 01824</div> <div>781-317-1700</div>		Project: WINDOW REPLACEMENT GUIDELINES THE BELMONT CONDOMINIUMS		Drawing No.: A100
		Title: WINDOW ELEVATION		Scale: N/A
Drawn: GAS	Checked: DRP	Approved: GAS	Project No.: 210002	Date: 8/12/2021



1

EXISTING WINDOW HEAD DETAIL

SCALE: 3" = 1'-0"



2

NEW WINDOW HEAD DETAIL

SCALE: 3" = 1'-0"

NOTES:

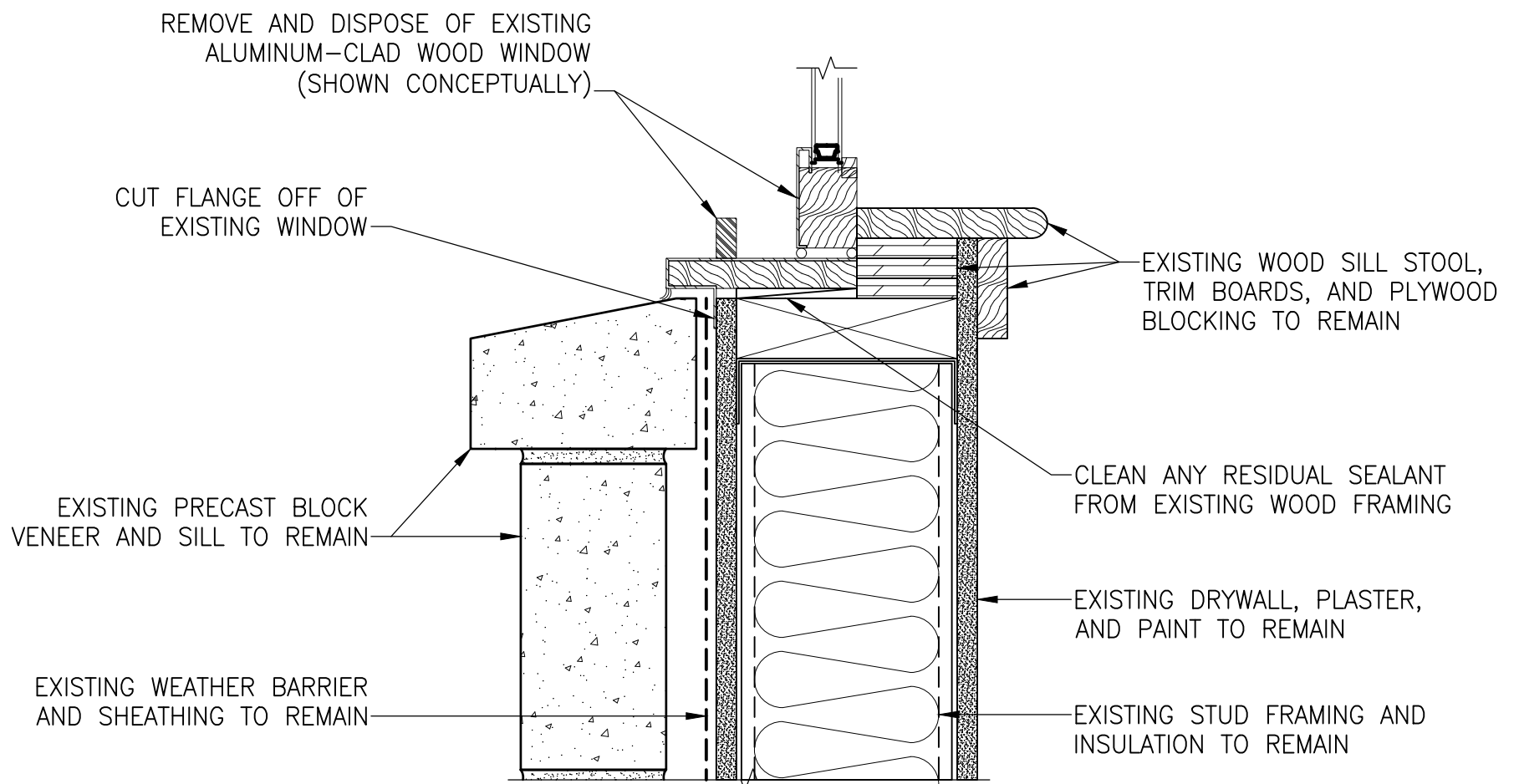
1. ALIGN FACE OF RECEPTOR FRAME WITH FACE OF EXISTING SHEATHING.
2. SEAL ALL JOINTS IN METAL PANNING WITH SEALANT OF MATCHING COLOR.
3. SEE ADDITIONAL NOTES ON A100.

**NOT FOR
CONSTRUCTION**



Project: WINDOW REPLACEMENT GUIDELINES THE BELMONT CONDOMINIUMS			
Title: WINDOW DETAILS			
Drawn: GAS	Checked: DRP	Approved: GAS	Project No.: 210002

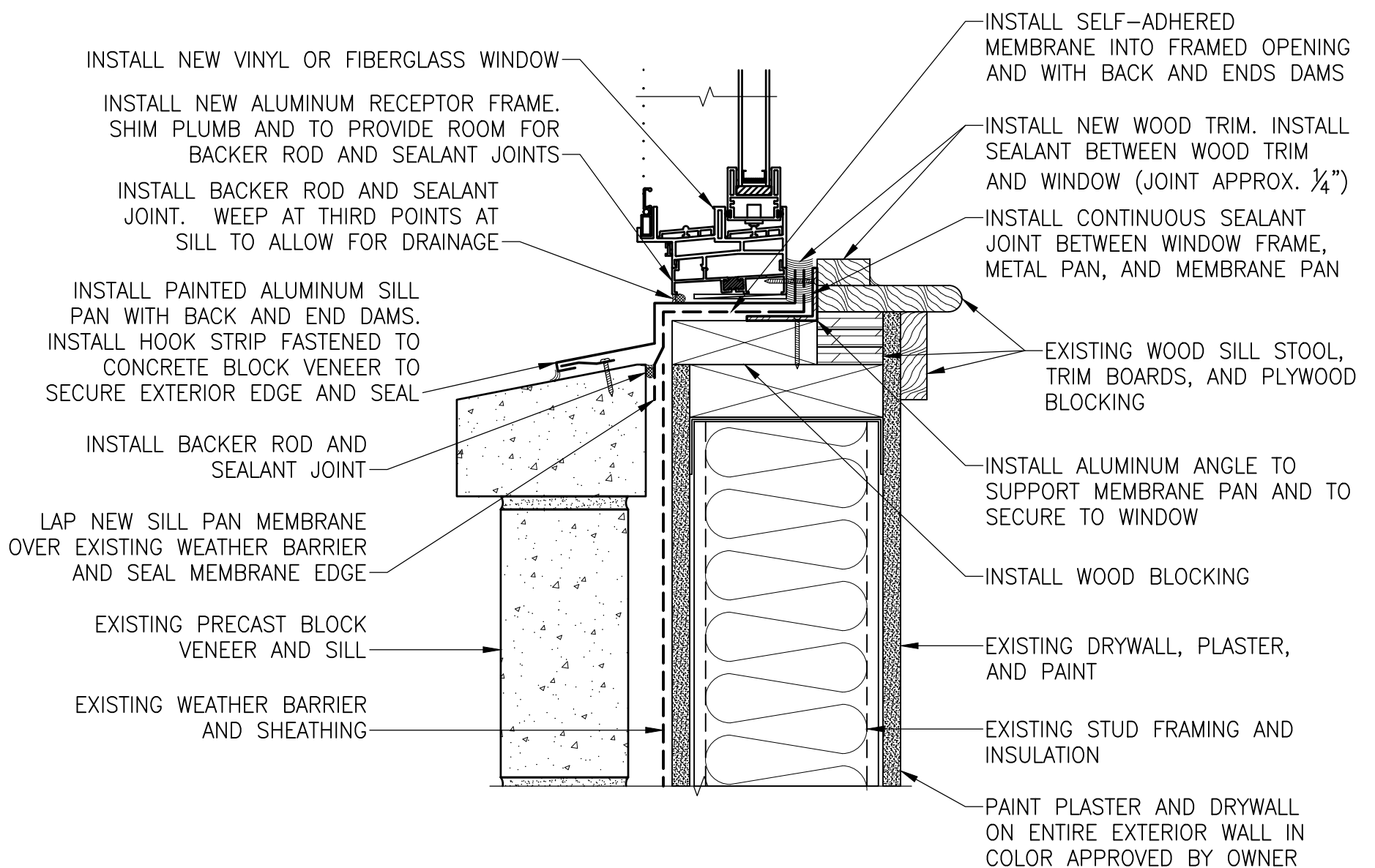
Drawing No.: A200
Scale: AS NOTED
Date: 8/12/2021



1

EXISTING WINDOW SILL DETAIL

SCALE: 3" = 1'-0"



2

NEW WINDOW SILL DETAIL

SCALE: 3" = 1'-0"

NOTES:

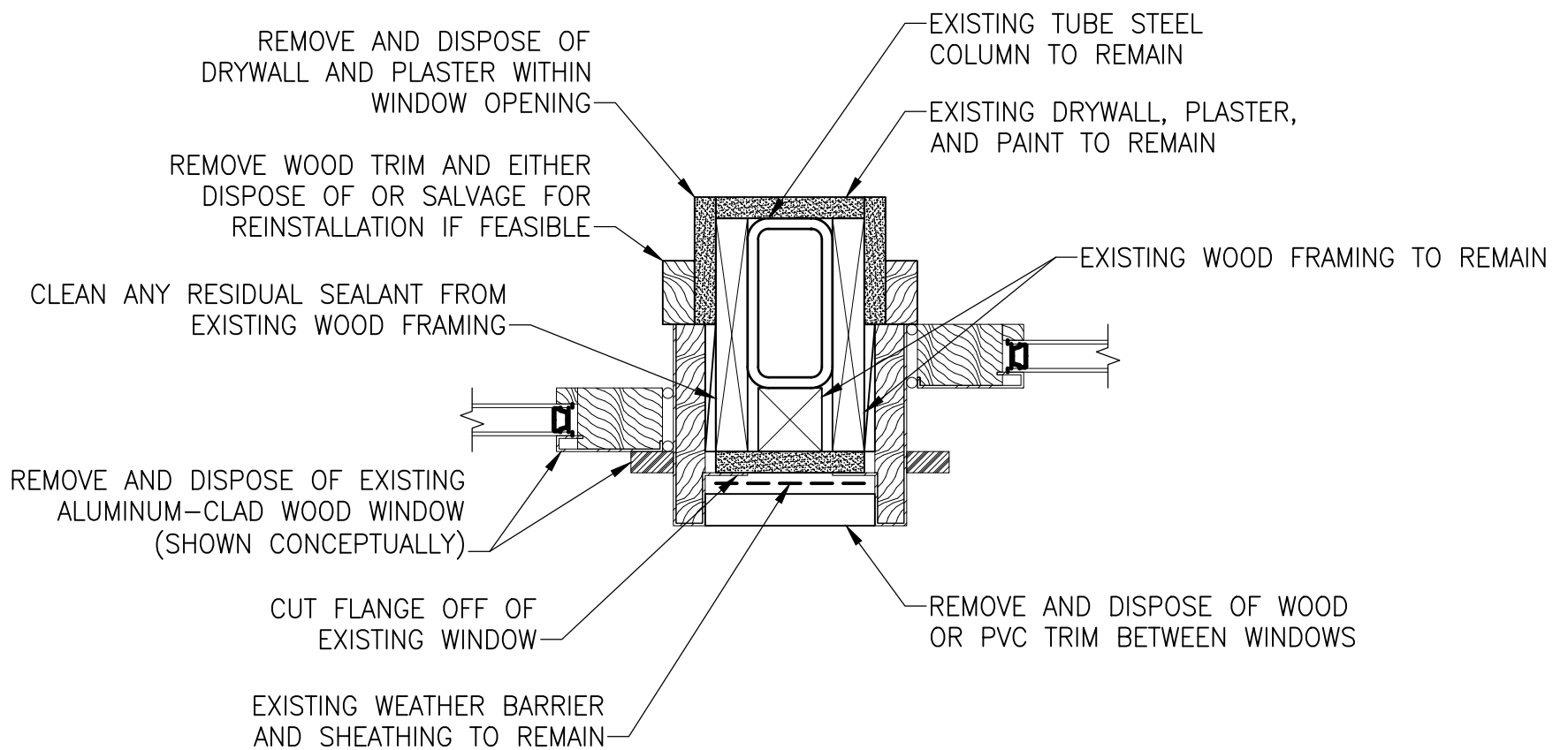
1. ALIGN FACE OF RECEPTOR FRAME WITH FACE OF EXISTING SHEATHING.
2. SEAL ALL JOINTS IN METAL PANNING WITH SEALANT OF MATCHING COLOR.
3. SEE ADDITIONAL NOTES ON A100.

**NOT FOR
CONSTRUCTION**



Project: WINDOW REPLACEMENT GUIDELINES THE BELMONT CONDOMINIUMS			
Title: WINDOW DETAILS			
Drawn: GAS	Checked: DRP	Approved: GAS	Project No.: 210002

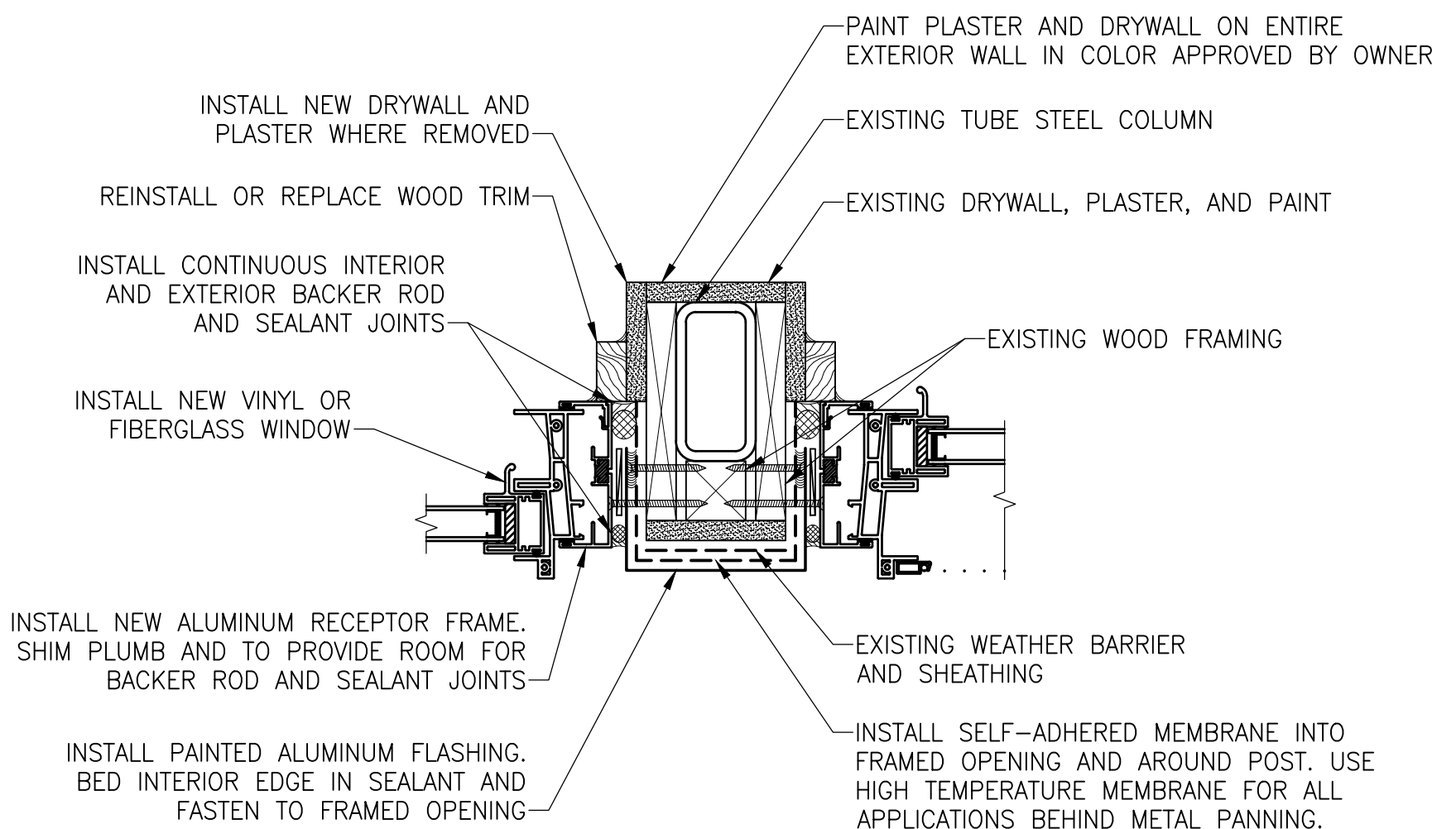
Drawing No.: A201
Scale: AS NOTED
Date: 8/12/2021



1

EXISTING WINDOW GANG DETAIL

SCALE: 3" = 1'-0"



2

NEW WINDOW GANG DETAIL

SCALE: 3" = 1'-0"

NOTES:

1. ALIGN FACE OF RECEPTOR FRAME WITH FACE OF EXISTING SHEATHING.
2. SEAL ALL JOINTS IN METAL PANNING WITH SEALANT OF MATCHING COLOR.
3. SEE ADDITIONAL NOTES ON A100.

**NOT FOR
CONSTRUCTION**



Project: WINDOW REPLACEMENT GUIDELINES THE BELMONT CONDOMINIUMS			
Title: WINDOW DETAILS			
Drawn: GAS	Checked: DRP	Approved: GAS	Project No.: 210002

Drawing No.: A203
Scale: AS NOTED
Date: 8/12/2021