

Rabbit Anti-MUC18/CD146/MCAM [EP54]: RM0026

Intended Use: For Research Use Only

Description: CD146 (melanoma-associated antigen A32), also known as MUC18, is a transmembrane glycoprotein expressed on endothelial cells and is located at the intercellular junction where it plays a role in cell adhesion, and in the cohesion of the endothelial monolayer. CD146 labels endothelial cells, smooth muscle cells, intermediate trophoblast, subpopulation of T cells, and peripheral neuronal cells. In tumor, CD146 is expressed on tumor cells derived from peripheral nerves system, melanoma and clear cell sarcoma. CD146 has been used as a marker for intermediate trophoblast. It has been reported that CD146 is useful in differentiation of mesothelioma (CD146 positive) and reactive mesothelium (CD146 negative). CD146 is associated with tumor progression and the development of metastasis in human malignant melanoma.

Specifications

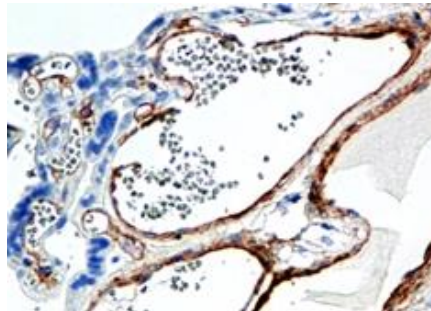
Clone: EP54
 Source: Rabbit
 Reactivity: Human
 Isotype: IgG
 Localization: Membrane, cytoplasm
 Formulation: Purified antibody in 0.2% BSA and 15mM sodium azide (NaN₃)
 Storage: Store at 2°- 8°C. For longer periods of storage, store at -20°C. Avoid repeat freeze-thaw cycles
 Applications: IHC
 Package:

| Description | Catalog No. | Size |
|-------------------------------|-------------|------|
| MUC18/CD146/MCAM Concentrated | RM0026 | 1 ml |

IHC Procedure*

Positive Control Tissue: Placenta, melanoma
 Concentrated Dilution: 50-200
 Pretreatment: Citrate pH6.0, 15 minutes using Pressure Cooker, or 30-60 minutes using water bath at 95°-99°C
 Incubation Time and Temp: 30-60 minutes @ RT
 Detection: Refer to the detection system manual

* Result should be confirmed by an established diagnostic procedure.



FFPE human placenta stained with anti-MUC18 using DAB