

FARM AUCTION

28402 Griessen Rd. - Sedalia, MO

Due to heath issues, I will sell the following at auction located from Broadway (50 Hwy) on the east side of Sedalia, take Engineer Str north 1.2 mile to Reine, then 2.5 mile (Reine turns into Greissen) to sale on:

Saturday, March 17th - 10 am



PICKUPS

2010 Ford F150 4 door, 4x4, 5.4 auto, 102k miles, near new Michelins, steel gray
2001 Ford F350 Super Duty Triton V-10 auto, 4x4, 197k miles, red, w/Beslar Series 3100 bale bed
2001 Ford F250 V-10 auto, 4x4, 185k miles, dark red
1999 Ford F250, extended cab, 7.3 diesel 4x4 automatic, 287k miles w/B&W flip-over ball gooseneck hitch, new Michelins, white

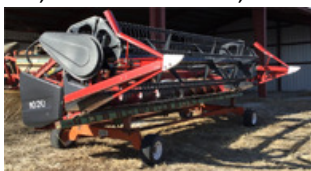


TRUCK

'77 Chevy C65 Grain truck, 366 motor, 5/2 trans. 400 bu 16' Parkhurst bed w/ hoist, near new rubber

COMBINE

'91 Case IH 1660 axial flow combine, rear wheel assist, 5513 hrs w/specialty rotor, exc. cond
Case IH 863 6 row corn head
6 row corn reel
1020 20' Grain table
Homemade header trailer



TRACTORS

1988 White 140, front wheel assist, New Michelin all around, 5513 hrs, 3 remotes, 540/1000 pto, axle mount dual hubs, less than 100 hrs on complete engine rebuild, clutch, and over/under
1988 White 140, 138 hp, 6 cyl. Diesel, 7982 hrs, near new rubber on back, 3 remotes, 540/1000 pto, axle mount dual hubs, less than 500 hrs on rebuilt over/under, recent clutch
1970 John Deere 4020, dual hydraulics, loader brackets, canopy, second owner
20 White suitcase weights



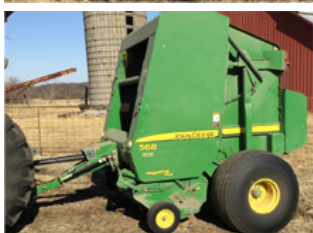
PLANTER

White 5100 6 row planter, no till coulters, dry fertilizer attachment, spiked closing wheels, new boom cylinder



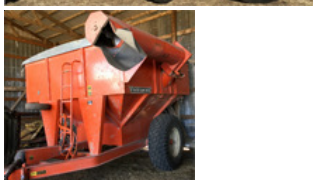
HAY AND SILAGE EQUIPMENT

John Deere 568 MegaWide Plus Big Round Baler, net wrap, silage kit, variable core, hydraulic pickup, 1000 pto, approx. 9730 bales
Reves In-Line Bale wrapper w/Honda 13 hp gas engine
Challenger PTD12 (Built by Hesston) Disc Mower
Conditioner, center pivot, 1000 rpm pto
Hesston 12' Mower Conditioner, hydro swing
M&W BF10 wheel rake
IHC 1150 Grinder-Mixer
United Farm Tool Grain Cart, 500 bu, 1000 rpm pto, roll over tarp, good cond
NH Super 717 Silage chopper, 2 row wide head, 540 pto hydraulic & electric spout controls
Swartz 191 silage feed wagon
Homemade gooseneck gravity flow wagon, 250 bu
Grain trailer for parts
Mulky 40' hay elevator
John Deere 6"x45' auger
8"x60' auger
6"x25' Load out auger



VAN TRAILER

40' Van Box storage trailer



LAWN MOWER

Gravely 144 0-turn mower, 19hp
Kawasaki, 44' commercial deck



FIELD SPRAYER

Willmar 6200 field sprayer, 60' booms, 2420 hrs, JD 4 cyl diesel engine, 2 spd hydrostat, 500 gal tank, air bag suspension, Raven rate controller & guidance system



ATV

2017 Honda Recon 250cc 4 wheeler, elect. Shift. New- purchased a few months ago from Dick's Honda

UTILITY VEHICLE

Kubota RTV1140 CPX diesel side by side, power steering, hyd. dump bed, exc. cond. canopy, actual hrs. 144, used very little



SKID STEER MOWER

Bradco model 17880 skid steer 60" mower, near new, manuals



STOCK TRAILERS

Diamond 2000 7x20 gooseneck stock trailer
Boss 7x20 gooseneck stock trailer



FIELD MAINTENANCE

Case IH 4200 field finisher hydraulic disk, 5 bar spike w/tooth harrow
MF 820 disc, tandems on wings
Delta 24' pasture harrow, hyd fold
Bush Hog 2615 Legend Batwing cutter, 540 pto
Rhino SR15 Batwing cutter, 1000 rpm pto
300 gal pickup sprayer, like new
Dual axle sprayer trailer, Pintel hitch
Baltic grass seeder, 3 pt pto
Kraus 10 shank chisel plow
13' 3 pt field finisher
Ford 5-16 mow board
John Deere Model H manure spreader



BLADES

Henke 12' Box blade, hyd tilt, near new
6' 3 pt Blade



TANKS

300 gal poly tank
1700 gal poly tank

TIRES AND OTHER FARM RELATED ITEMS

2- Goodyear 800/65/R32 combine tires
4- 9 hole floater tires, Firestone 48x/25/20, for sprayer
2 sets 18/4/38 duals for White tractors
2- Rice tires 28L26 for gleaner
7-9-20 tires and wheels • Various used tires
50 gal upright air compressor
Mach SM 33 semen tank • Chemical shuttle pump
Sev. hay ring feeders & feed troughs
Sprayer mixing cone • Gas engine water pump



ROB SNEED 660-620-1718

Terms: Cash, approved check (non-local buyers unknown to auctioneer furnish letter of credit from bank) and credit/debit cards (convenience fee applied).
Nothing to be removed until settled for. Not responsible for accidents. Statements made day of sale take precedence over printed material. Lunch served.

LARRY
DRENON AUCTION

Larry
660-596-8515

Lacey
660-723-1104

Laramie
660-221-4386

660-547-2646

