

POWERS' PICKS \$15

Volume 8 Issue 15

October 29th-November 2nd, 2020

© 2020 BP Sports, LLC

CFB/NFL Best Bets Still Lead Newsletter Contest! Week 9 CFB Best Bets Pg 3, Week 8 NFL Best Bets Pg 7

Week 8 News and Notes!

For those of you that are new, in this section we'll recap what happened last week specifically, the misleading finals, the key injuries, the bad beats and the line moves. We'll include most of these recaps here, therefore you don't have to waste time reading about them in my game-by-game write-ups for the upcoming week. Without further adieu, here's a run down of what happened last week in the world of CFB.

Week 8 Trends

Favorites-Dogs

Straight Up 33-14
ATS 25-21-1

Home-Away

Straight Up 33-14
ATS 24-22-1

Totals (O/U)

Over-Under 23-23-1

Season To-Date

Favorites-Dogs

Straight Up 159-56
ATS 99-112-4

Home-Away

Straight Up 136-78
ATS 105-105-4

Totals (O/U)

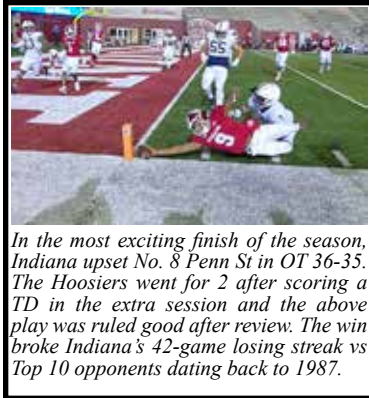
Over-Under 112-100-4

Largest Favorites to Cover:

Army (-30.5) vs Mercer, 49-3
BYU (-30) vs Texas St, 52-14
Ohio St (-27.5) vs Nebraska, 52-17
Alabama (-22) at Tennessee, 48-17

Biggest Money line Upsets:

Wake Forest +320 won 23-16 vs Virginia Tech (+10.5)
Jacksonville St +310 won 19-10 at FIU (+10)
Rutgers +310 won 38-27 at Michigan St (+9.5)
San Jose St +250 won 17-6 vs Air Force (+7.5)



In the most exciting finish of the season, Indiana upset No. 8 Penn St in OT 36-35. The Hoosiers went for 2 after scoring a TD in the extra session and the above play was ruled good after review. The win broke Indiana's 42-game losing streak vs Top 10 opponents dating back to 1987.

ATS Notables

Arkansas is 4-0 ATS this year covering by an average of 12 ppg.
WKU is 0-6 ATS this year failing to cover by an average of 11 ppg.
Georgia St games are 4-0 to the OVER this year by an average of 13 ppg.
UL-Monroe games are 5-1 to the UNDER this year.

Misleading Finals

Jacksonville St (+10) upset FIU 19-10 but it was much worse than the final. Jacksonville St had 26-6 first down and 444-156 yard edges including 285-72 on the ground. Jacksonville St also played most of the game without their star QB who got hurt early.

Boston College (-3) beat Georgia Tech 48-27. However, BC only had 23-19 first down and 409-362 yard edges but were +3 in TO's. Those three TO's all led to BC TD drives.

Wake Forest (+10.5) upset Virginia Tech 23-16. However, Virginia Tech had 28-17 first down and 433-316 yard edges but were -3 in TO's.

Indiana (+6.5) upset Penn St 36-35. However, Penn St had 27-16 first down and 488-211 yard edges including 250-41 on the ground. Penn St saw three red-zone

possessions end without points, three missed field goals, two interceptions, one lost fumble, a muffed punt and a fumbled kickoff return in addition to a late TD run where they should have taken a knee to run out the clock.

Rutgers (+9.5) upset Michigan St 38-27. However, MSU had 23-16 first down and 369-276 yard edges. The Spartans had 7 TO's (Rutgers had 3)!

Memphis (-14) beat Temple 41-29. However, Temple had 30-24 first down and 500-489 yard edges. The two teams combined for 7 TO's (Temple had 4). In one span of seven plays after halftime Memphis turned an interception into a touchdown, forced and recovered a fumble and scored another touchdown, turning a five-point halftime deficit into a 27-15 lead, which the Tigers never surrendered.

Kansas St (-19) crushed rival Kansas 55-14. However, Kansas St only had a 381-320 yard edge. The Wildcats got a 55-yard punt return TD, a 24-yard interception return TD and another 52-yard punt return TD all in the first half!

South Alabama (-14.5) beat ULM 38-14. However, the first downs were even at 20-20 and South Alabama only had a 415-380 yard edge. South Alabama got a 95-yard interception return TD in the 1Q (a 14-point swing). ULM also missed a FG and were stopped on downs twice in USA territory.

Charlotte (-17.5) beat UTEP 38-28. However, UTEP had 24-17 first down and 374-329 yard edges but were -3 in TO's.

Missouri (+3) dominated Kentucky much more than the 20-10 final with 26-8 first down and 421-145 yard edges including 220-95 on the ground. Missouri had a 43:10-16:50 TOP edge! They also had a 21-play drive in the 3Q that resulted in zero points!

Bad Beats

Chattanooga was +475 on the money-line vs WKU as 14-point underdogs. However, Chattanooga had a kick return TD called back in the final seconds after WKU's final score. It was a questionable call at best considering they called a fair catch signal was made by a Chattanooga player off the ball.

Wisconsin kicked a FG with :56 left that put the game over the 51.5-point total by a 0.5-point. **UCF** (-21) took a knee at the one-yard line at the end of the game vs Tulane in a 51-34 win.

Injuries/COVID Cases

The **Colorado St/New Mexico** game was postponed due to positive cases at NM. This week's **Marshall/FIU** game was cancelled due to positive cases at FIU. This week's **San Jose St/New Mexico** game was moved to San Jose St. **FAU** brought only 57 players on their first trip of the season to Marshall.

Coastal Carolina QB Grayson McCall is downgraded to doubtful vs Georgia St. East Carolina QB Holton Ahlers is probable Friday vs Tulsa (COVID). LSU QB Myles Brennan is ? vs Auburn (Abdominal).

Southern Miss QB's Tate Whatley and Jack Abraham are ? vs Rice.

Temple QB Anthony Russo is ? vs Tulane (Shoulder).

Troy QB Gunnar Watson is ? vs Arkansas State (Upper Body).

Wisconsin QB's Graham Mertz and Chase Wolf are out indefinitely (COVID).

Wyoming QB Sean Chambers is out indefinitely (leg).

Recapping Week Five Best Bets

We went 2-4-1 on these pages last week but if you wait and bet on gameday, you could have went as bad as 1-6. Pitt (+10.5) over ND was our worst pick on these pages this year. Iowa St (+3.5) got the back-door late but the line moved to as low as +2.5 on gameday. La Tech/UTSA OVER pushed but if you waited you lost. South Carolina/LSU UNDER had no shot. In the NFL, Carolina won but the UNDER in the KC/Denver game lost thanks to a pair of non-offensive TD's. The Raiders were another big loser.

2020 Nationwide Football Newsletter Contest (Regular Season Only)

We are happy to provide you with the records, standings and plays used from the Power Sweep (3★, 4★ & Underdog), Gold Sheet (Key Releases), Power Plays (4.5★ for College 4★ for NFL), Sports Reporter (Best & Super Bests), Winning Points (Best Bets & Preferred), Playbook (3-5★'s), Pointwise (Ratings 1-4), Powers' Picks (1-4★'s) and the Sunday Night Owl Report (1-4★'s).

College						NFL						College/NFL Combined					
Newsletter	W	L	T	%	Net	Newsletter	W	L	T	%	Net	Newsletter	W	L	T	%	Net
Powers' Picks	12	7	1	63.16%	5	Gold Sheet	17	11	0	60.71%	6	Powers' Picks	22	18	1	55.00%	4
Power Plays	5	4	0	55.56%	1	Playbook	11	10	0	52.38%	1	Power Plays	8	8	0	50.00%	0
Winning Points	17	15	1	53.13%	2	Pointwise	11	10	0	52.38%	1	Playbook	13	14	0	48.15%	-1
Power Sweep	12	12	1	50.00%	0	Powers' Picks	10	11	0	47.62%	-1	Pointwise	25	27	0	48.08%	-2
Pointwise	14	17	0	45.16%	-3	Power Plays	3	4	0	42.86%	-1	Winning Points	27	32	1	45.76%	-5
Playbook	2	4	0	33.33%	-2	Sports Reporter	6	8	0	42.86%	-2	Power Sweep	16	22	1	42.11%	-6
Sports Reporter	5	14	1	26.32%	-9	Winning Points	10	17	0	37.04%	-7	Gold Sheet	23	32	1	41.82%	-9
Gold Sheet	6	21	1	22.22%	-15	Power Sweep	4	10	0	28.57%	-6	Sports Reporter	11	22	1	33.33%	-11
Combined	73	94	5	43.71%	-21	Combined	72	81	0	47.06%	-9	Combined	145	175	5	45.31%	-30

CFB and NFL Schedules with Vegas and Brad Powers Lines Week 9 Oct 29th-Nov 2nd

NFL/CFB Thursday, Oct 29th		Line	BP	All Times Eastern		Saturday, October 31st		Line	BP	All Times Eastern	
101 ATLANTA	8:20 p.m. FOX/NFL Net	50.5	49			179 IOWA ST	12:00 p.m. FS1	-28.5	-27		
102 CAROLINA		-2.5	-3			180 KANSAS		52	53		
103 SOUTH ALABAMA	7:30 p.m. ESPN	51	53			181 LSU	3:30 p.m. CBS	-3	61		
104 GEORGIA SOUTHERN		-5	-7			182 AUBURN		65	-1		
157 COLORADO ST	10:00 p.m. CBSSN	-1.5	59			183 UAB	3:30 p.m.	-12	-10		
158 FRESNO ST		59	-1			184 LOUISIANA TECH		46.5	50		
Friday, October 31st		Line	BP	All Times Eastern		Line	BP				
107 EAST CAROLINA	9:00 p.m. ESPN2	61	61			185 OLE MISS	4:00 p.m. SEC Network	-16.5	-21		
108 TULSA		-17	-19			186 VANDERBILT		64	61		
131 MINNESOTA	7:30 p.m. ESPN	-20	-18			187 APPALACHIAN ST	4:00 p.m. ESPNU	-32	-28		
132 MARYLAND		60.5	58			188 UL-MONROE		55	56		
141 HAWAII	1:00 p.m. FS1	-1	55			189 MISSISSIPPI ST	7:00 p.m. ESPN	63.5	64		
142 WYOMING		60	-1			190 ALABAMA		-30.5	-30		
Saturday, October 31st		Line	BP	All Times Eastern		Line	BP				
109 MICHIGAN ST	12:00 p.m. FOX	53	52			191 ARKANSAS	7:30 p.m. SEC Network	54.5	54		
110 MICHIGAN		-24.5	-24			192 TEXAS A&M		-12.5	-14		
111 WAKE FOREST	12:00 p.m. ACC Network	-11	-14			193 MISSOURI	7:30 p.m. SEC Alt	61.5	59		
112 SYRACUSE		59	60			194 FLORIDA		-13	-11		
113 NORTH CAROLINA	8:00 p.m. ACC Network	-6.5	-9			195 GEORGIA	12:00 p.m. SEC Network	-15	-17		
114 VIRGINIA		61.5	61			196 KENTUCKY		42.5	37		
115 UTSA	12:00 p.m.	47	50			199 NEW MEXICO	7:00 p.m. FS1	58	55		
116 FLORIDA ATLANTIC		-5	-4			200 SAN JOSE ST		-13.5	-13		
117 KANSAS ST	12:00 p.m. ESPN2	46	48			NFL Wk 8 Sunday, Nov 1st		Line	BP	All Times Eastern	
118 WEST VIRGINIA		-3.5	-4			251 INDIANAPOLIS	1:00 p.m. CBS	-2.5	-1		
119 BOSTON COLLEGE	12:00 p.m. ABC	61	65			252 DETROIT		50	47		
120 CLEMSON		-31	-31			253 MINNESOTA	1:00 p.m. FOX	52.5	50		
121 VIRGINIA TECH	4:00 p.m. ACC Network	-3.5	-1			254 GREEN BAY		-6.5	-8		
122 LOUISVILLE		67.5	65			255 NEW ENGLAND	1:00 p.m. CBS	42.5	39		
123 NOTRE DAME	3:30 p.m. ABC	-20	-18			256 BUFFALO		-3.5	-3		
124 GEORGIA TECH		57	58			257 TENNESSEE	1:00 p.m. CBS	-5.5	-5		
125 CHARLOTTE	7:00 p.m. ESPN3	56	56			258 CINCINNATI		53.5	53		
126 DUKE		-9.5	-12			259 LAS VEGAS	1:00 p.m. FOX	52.5	51		
129 COASTAL CAROLINA	12:00 p.m. ESPNU	-2.5	-1			260 CLEVELAND		-2.5	-3		
130 GEORGIA ST		61.5	61			261 N.Y. JETS	1:00 p.m. CBS	49	50		
133 INDIANA	3:30 p.m. Big Ten	-10	-17			262 KANSAS CITY		-19.5	-18		
134 RUTGERS		52.5	51			263 L.A. RAMS	1:00 p.m. FOX	-4	-6		
135 OHIO ST	7:30 p.m. ABC	-12	-11			264 MIAMI		46	48		
136 PENN ST		63.5	59			267 NEW ORLEANS	4:25 p.m. FOX	-4	-7		
137 MEMPHIS	12:00 p.m. ESPN	55.5	58			268 CHICAGO		43.5	41		
138 CINCINNATI		-6.5	-10			269 SAN FRANCISCO	4:25 p.m. FOX	53.5	53		
139 PURDUE	12:00 p.m. Big Ten	-7	-9			270 SEATTLE		-3	-1		
140 ILLINOIS		58.5	57			271 DALLAS	8:20 p.m. NBC	NL	43		
143 SAN DIEGO ST	9:30 p.m. CBSSN	-7.5	-6			272 PHILADELPHIA		NL	-9		
144 UTAH ST		43.5	42			275 L.A. CHARGERS	4:05 p.m. CBS	-3	-1		
145 WKU	10:15 p.m. ESPN	52.5	55			276 DENVER		44	44		
146 BYU		-28.5	-31			281 PITTSBURGH	1:00 p.m. CBS	46.5	47		
149 NORTH TEXAS	2:00 p.m. CBSSN					282 BALTIMORE		-3.5	-7		
150 UTEP		Postponed				Monday, November 2nd		Line	BP	All Times Eastern	
151 BOISE ST	6:00 p.m. CBSSN	-14	-13			273 TAMPA BAY	8:15 p.m. ESPN	-10.5	-10		
152 AIR FORCE		49	49			274 N.Y. GIANTS		46	44		
153 NEVADA	10:30 p.m. FS1	-14	-13			<h2 style="text-align: center; margin: 0;">Betting CFB World Openers</h2> <p>Every week while most of you are watching the NFL on Sundays, we are preparing for the upcoming week. Here in Vegas at 11am PT, Circa Sports is the first book in the world to release CFB lines and we bet them every week. We think it's the best value bets we make all week. So far this season we are 42-29-2 (59%) on these Sunday bets with an average line value of 2.8 ppg! Below is what we bet this week but we want to say that winning is very hard in this industry. So even though we have the best of the number on most of these bets by significant margins...there are no locks and there are no guarantees!</p> <p>Here's the 15 Circa bets we made Sunday (in rotation order):</p> <ul style="list-style-type: none"> (111) Wake Forest -10...now -11. Still lean Wake. (113) North Carolina -4...now -6.5. Still lean NC. (117/118) Kansas St/West Virginia OVER 46.5...now 46. Bad Bet! (133) Indiana -12...now -10. We still like the Hoosiers! (135) Ohio St -8...now -12. No play at current number. (139) Purdue -4...now -7. We still lean Boilers. (139/140) Purdue/ILLINOIS UNDER 63...now 58.5. No play now. (147/148) San Jose St/New Mexico UNDER 65...game moved to San Jose. (151) Boise St -8...now -14. No play at current number. (153) Nevada -8...now -14. No play at current number. (155) Rice +2...now +1.5. We like Rice. (165) Nebraska +10.5...now +3. Now game cancelled. (170) Tulane PK...now -3.5. No play at current number. (185) Ole Miss -18...now -16.5. We like Ole Miss. (191/192) Arkansas/Texas A&M UNDER 62.5...now 54.5. No play now. 					
154 UNLV	3:00 p.m. ESPN3	59.5	55								
155 RICE		57	-3								
156 SOUTHERN MISS	7:30 p.m. ESPN2	-1.5	59								
159 NAVY		58.5	61								
160 SMU		-13	-13								
161 NORTHWESTERN	3:30 p.m. ESPN	46.5	44								
162 IOWA		-2.5	-4								
163 TEXAS	4:00 p.m. FOX	58.5	59								
164 OKLAHOMA ST		-3.5	-3								
165 WISCONSIN	3:30 p.m. FS1										
166 NEBRASKA		Cancelled									
167 OKLAHOMA	8:00 p.m. FOX	-14.5	-17								
168 TEXAS TECH		68.5	65								
169 TEMPLE	12:00 p.m. ESPN+	59.5	62								
170 TULANE		-3.5	-4								
171 UL-LAFAYETTE	8:00 p.m. ESPNU	-16.5	-17								
172 TEXAS ST		55.5	57								
173 TROY	3:00 p.m. ESPN3	72	71								
174 ARKANSAS ST		-2.5	-3								
175 TCU	3:30 p.m. ESPN2	-2.5	51								
176 BAYLOR		48	-1								
177 UCF	2:00 p.m. ESPN+	-2.5	-3								
178 HOUSTON		82.5	79								

4★ = BEST 3★ = BETTER 2★ = GOOD 1★ = FAIR	THE POWERS' PACK 2★ Indiana (-10) over RUTGERS 2★ CINCINNATI (-6.5) over Memphis 2★ Rice (+1.5) over SOUTHERN MISS 2★ Ole Miss (-16.5) over VANDERBILT 1★ UNDER 60 Hawaii/WYOMING
--	--

Games in Rotation Order **HOME TEAM IN CAPS**
Thursday, October 29th

GEORGIA SOUTHERN 30 South Alabama 23. The two teams have played similar strength of schedules so far and have similar statistical profiles as Georgia Southern is +2 ypg and South Alabama is -3 ypg. Georgia Southern is off the loss to Coastal Carolina who was playing their backup at QB. Meanwhile, South Alabama is 4-1 ATS this season but did have a misleading blowout win over ULM last week (see page 1). Georgia Southern is 6-0 SU/5-1 ATS in the series and doesn't have to travel on a short week.

FRESNO ST 30 Colorado St 29. Colorado St saw their game vs New Mexico cancelled last week due to COVID issues at NM and this is their first game of the season. Teams playing their first game of the season are 25-10-2 ATS (+5 ppg) vs teams that have already played this year. The Rams have a new head coach in Steve Addazio and have had some off-field issues this year. Meanwhile, Fresno lost their first game new coach Kalen DeBoer last week. The Bulldogs were outgained 552-409 including 323-120 on the ground. Fresno QB Jake Haener was 17 of 31 for 289 yards but 3 INT's. Our ratings say Fresno is the slight play here.

Friday, October 30th
Marshall at FIU was cancelled due to COVID issues at FIU.

TULSA 40 East Carolina 21. Tulsa has been super impressive so far this season at 3-0 ATS covering their games by nearly 20 ppg. The Golden Hurricane are +1.4 in yards per play differential (No. 16 in the country) and that is saying something considering they have played Oklahoma St and UCF already. They've also played all 3 games on the road so far. Meanwhile, it looks like East Carolina will get back QB Holton Ahlers who missed their last game (a loss to Navy). Not much value here.

Minnesota 38 MARYLAND 20. Last week the Gophers were crushed on Saturday Night ABC as Michigan had a 8.5-4.5 yards per play advantage vs them! The Gophers played without two starting offensive linemen, right tackle Daniel Faaelele and right guard Curtis Dunlap. Positive COVID-19 tests depleted their specialists, Fleck said, with punter Mark Crawford, kicker Michael Lantz and kickoff specialist Grant Ryerse all held out. Linebacker Braelen Oliver, an expected starter, suffered an unspecified injury in spring practice and did not play. They're taking on a Maryland team that was dominated by Northwestern just like the 43-3 final would indicate with 31-14 first down and 537-207 yard deficits including 325-64 on the ground. Terps' QB Taulia Tagovailoa was just 14 of 25 for 94 yards and 3 INT's in his debut. Minnesota should easily get a bounce back win here but this line seems steep for a less than 100% Minny team.

1★ UNDER 60 WYOMING 28 Hawaii 27. Hawaii is staying in Denver for the week so they "should" be acclimated to the cold weather and the altitude. The Rainbow Warriors easily won and covered as 3-point underdogs last week in a 34-19 win at Fresno St. Hawaii had 27-22 first down and 552-409 yard edges including 323-120 on the ground. QB Chevan Cordeiro threw for 229 yards and ran for 116 yards and 2 TD's. Meanwhile, Wyoming is off an upset loss at Nevada in OT. Wyoming QB Sean Chambers was hurt on the first possession and Levi Williams was 16 of 31 for 227 yards with a 1-1 ratio. Trailing 28-6 with 3:26 left in the third quarter, Williams led the Cowboys on three consecutive scoring drives. That should give them some confidence in this one. We're taking the UNDER here. There are 15 mph winds in the forecast. Also we think Hawaii will be a run-first team this year.

Saturday, October 31st

MICHIGAN 38 Michigan St 14. Michigan St was on a 10-0 ATS run in this series but Michigan has easily won and covered the last two games including 44-10 last year. This is the 2nd straight year they will be playing in the Big House but this year there will 110,000 less fans. Last week these teams had disparate results in their openers. First, Michigan lost outright to Rutgers as a 9.5-point favorite. It was a misleading final as MSU had 23-16 first down and 369-276 yard edges. However, the Spartans had 7 TO's (Rutgers had 3). "Turnover margin is the largest determining factor in winning and losing games, college and pro," new head coach Mel Tucker said. Meanwhile, Michigan crushed Minnesota. UM had a 478-326 yard edge including 256-129 on the ground. It could have been worse but Michigan did miss 3 FG's in the game. QB Joe Milton was 15 of 22 for 225 yards and a TD in his first start while also adding 52 rush yards and another TD. We were looking to bet this game a week ago at this time but we're guessing the line would have been in the -17 range or so. Now it's been priced out in our opinion.

WAKE FOREST 37 Syracuse 23. Wake has revenge for losing outright to Syracuse in OT last year. The Demon Deacons have exceeded expectations so far this year as last week they pulled an outright upset over Virginia Tech as 10.5-point underdogs. Please note that VT had 28-17 first down and 433-316 yard edges and Wake has been out-gained on the season at -24 ypg. Meanwhile, Syracuse had one of their best performances of the season easily covering as 47.5-point underdogs at Clemson. It was only 27-21 late 3Q before Clemson pulled away. The best thing Syracuse has done so far this year is force TO's on defense. The problem is Wake only has one turnover on offense this whole year!

North Carolina 35 VIRGINIA 26. The Tar Heels got back on track in a blowout win over rival NC State. North Carolina had 34-23 first down and 578-392 yard edges including 326-34 on the ground. NC is now +156 ypg (No. 14) and +1.8 yards per play (No. 11) for the season. They're taking on a Virginia team that got back QB Brennan Armstrong last week in a cover vs Miami, FL. Armstrong threw for 181 yards and two TD's and also ran for 91 yards. It was the fourth straight loss for the Cavaliers, and this marks the first time since 2013 that they've played four consecutive games without ever holding a lead. Make it 5 straight.

FLORIDA ATLANTIC 27 Utsa 23. We've been impressed with UTSA so far as they are 4-3 SU/ATS this season. Last week we needed the OVER in the game (some of you pushed, some of you lost) and the two teams settled for 6 FG's including 4 of less than 30 yards. UTSA RB Sincere McCormick ran for 165 yards and 3 TD's as he entered with a nation-leading 702 yards rushing. Frank Harris got the start at QB for UTSA but threw 2 INT's. On the other side, the Owls should be commended for staying in the Marshall game as long as they did. A total of 43 players who began fall camp did not make the trip, including 28 related to COVID-19. Five of the Owls' first six games were canceled by the pandemic so it's tough to get a read on them so far. We lean with the dog.

WEST VIRGINIA 26 Kansas St 22. Looking at the statistical profiles of each team, it screams there is value on West Virginia here. The Mountaineers are +199 ypg while Kansas St is -60 ypg. The problem is Kansas St does all the little things well like turnover margin (+8) and the Wildcats have the best special teams in the country. Last week, Kansas St got a 55-yard punt return TD, a 24-yard interception return TD and another 52-yard punt return TD all in the first half in their blowout win over rival Kansas. Meanwhile, the key play in West Virginia's loss to Texas Tech was a 56-yard fumble return TD by TT with 8:44 left that was the final score. Kansas St is the best underdog team in the country at 47-23-1 ATS (67%, +4.6 ppg) since 2009. That keeps us off the Mountaineers here.

CLEMSON 48 Boston College 17. Last week Clemson as a 47.5-point favorite only led Syracuse 27-21 late 3Q (eventually won 47-21). It was shocking considering the spread and also the fact they were +3 in TO's. QB Trevor Lawrence was 27 of 43 for 289 yards and 2 TD's but threw the first "Pick 6" of his career. Meanwhile BC has certainly exceeded expectations this year at 4-2 and last week beat Georgia Tech 48-27. However, they are -5 ypg on the season. One positive is they finally got their ground game going. They came in averaging just 66 rush ypg but ran for 264 yards led by QB Jurkovec who had 94 rush yards! Our power ratings have this one exactly at 31. On one hand, Clemson should be sharper after last week's effort but they also have the big game vs Notre Dame on deck.

Virginia Tech 33 LOUISVILLE 32. Statistically these teams are similar as Louisville is +30 ypg while VT is +28 ypg. The Cardinals are +0.6 yards per play while the Hokies are +0.7. The reason why Louisville is only 2-4 is a -8 TO margin. However, they've cleaned it up recently and are off their two best performances of the season including last week's blowout win over Florida St. Meanwhile, Virginia Tech is off an upset loss to Wake Forest. It was misleading as VT had 28-17 first down and 433-316 yard edges but were -3 in TO's. We trust Louisville head coach Satterfield more than VT HC Fuente and Louisville has more weapons on offense.

Notre Dame 38 GEORGIA TECH 20. It doesn't get any worse than our Pitt recommendation on these pages last week. We thought ND's pass game which had struggled all season would struggle with a really good Pitt defense. We were wrong as Ian Book threw for 312 yards! We thought Pitt QB Joey Yellen would hold his own. We were wrong as Yellen threw 3 INT's! The Irish played one of their best games in years as it was only the 12th time since 1980 they covered a game by 28 points or more. They're taking on a mistake-prone Georgia Tech team that last week again was -3 in TO's in their blowout loss to Boston College. GT allowed 264 rush yards to a terrible BC rush offense and now face a powerful ND ground attack that averages 232 rush ypg. Do the Irish look ahead in the second half to Clemson?

DUKE 34 Charlotte 22. We think there is value in this Duke team. They are +11 ypg on the season, yet are 1-5. They get to hit re-set on the season after a bye and hopefully they can work on a nation-worst -11 TO margin. Meanwhile, Charlotte is off back-to-back wins but were outgained last week vs UTEP and couldn't cover despite a +3 TO margin. While Charlotte will be excited in taking on a Big in-state Brother, Duke is stepping down in class and the only time that has happened so far this season, they outgained Syracuse by 359 yards and won by 14 despite a -4 TO margin. They get the cover here.

Coastal Carolina 31 GEORGIA ST 30. First time Coastal Carolina has ever had to play on the road as a ranked team. Kudus to them last week for beating Georgia Southern 28-14 without starting QB Grayson McCall. Fred Payton was 15 of 28 for 252 yards and 3 TD's for Coastal and it looks like McCall will be out for this game as well. Meanwhile, Georgia St is off a small upset of Troy last week. Troy had a 447-379 yard edge but Georgia St a 210-40 rushing yard edge and the Panthers are out-rushing their opponents on average 237-97. We want to take Georgia St here but are waiting for a key "3" number to show back up.

2★ Indiana 34 RUTGERS 17. While it is not the perfect scenario playing on Indiana after their first win over a Top 10 team in 33 years, this line doesn't make sense to us. Too much credit is being given to Rutgers for beating Michigan St last week. Newsflash...MSU is a really bad team this year and the Spartans spotted the Scarlet Knights 7 TO's! Yes, Indiana was out-gained 488-211 and somehow beat Penn St last week. However, Penn St is a Top 10 team! Let's compare lines...Rutgers was +10 at Michigan St. You flip home/away (2 points of HFA this year) and the Scarlet Knights would've been +6 vs Michigan St at home. That means Indiana is only 4 points better than MSU on a neutral field!?! Again, that doesn't make sense to us. We have this one power-rated at Indiana -17 and keep in mind we have upgraded Rutgers as much as any team in the country since the end of last year! Note Indiana won by 35 last year and had an incredible 557-75 yard edge. Have the two teams closed the gap that much in just one year? We don't think so.

Ohio St 35 PENN ST 24. This game lost a lot of its luster when Penn was upset by Indiana last week. However, Penn St had 27-16 first down and 488-211 yard edges including 250-41 on the ground. Head coach James Franklin will be on major clean-up duty this week after seeing three red-zone possessions end without points, three missed field goals, two interceptions, one lost fumble, a muffed punt and a fumbled kickoff return in addition to a late TD run when Indy was letting them score. Meanwhile, Ohio St blew out Nebraska and looked like a legit National Title contender. QB Justin Fields was 20 of 21 for 276 yards and 2 TD's. Note Penn St has covered 4 straight in the series with all of them decided by 11 points or less. We'd feel more confident in backing the Nittany Lions here but they won't have that raucous "White Out" crowd for this one.

2★ CINCINNATI 34 Memphis 24. Cincinnati comes in off their best performance of the season. Despite not playing for 3 weeks, they had a 439-290 yard edge including 313-75 on the ground and beat SMU 42-13. Cincy QB Desmond Ridder ran for 179 yards and 3 TD's including a 91-yarder! That was the same SMU team that beat Memphis a few weeks back. The Bearcats are +104 ypg on the season and their defense is allowing just 13 ppg. Meanwhile, Memphis is only +2 ypg on the season and is allowing 568 ypg on defense. While potent on offense, this the type of game where RB Kenneth Gainwell and WR Damonte Coxie would come in handy but both opted out. We will back the better defense who has double-revenge for a pair of close losses to Memphis last year.

Purdue 33 ILLINOIS 24. Last week, Purdue managed to upset Iowa without head coach Jeff Brohm and WR Rondale Moore. Jeff's brother Brian filled in nicely and Purdue WR David Bell was the star with 13 receptions for 121 yards and 3 TD's. Meanwhile, Illinois was crushed at Wisconsin 45-7. Illinois QB Brandon Peters was only 8 of 19 for 87 yards but did run for 75 yards. Purdue has revenge for an embarrassing loss to Illinois last year in a driving rain storm. They will get back their head coach here and maybe even their star WR. We will back them.

San Diego St 24 UTAH ST 18. Two teams come in off disparate results last week. San Diego St had 21-11 first down and 424-186 yard edges including 287-80 on the ground. They led 27-0 at halftime and UNLV only had 15 yards at that point. Meanwhile, Utah State trailed 28-0 at halftime to Boise St but it was 28-13 with under 12 left in the 4Q! Utah St QB Jason Shelley was 14 of 27 for only 92 yards and an INT. With a very low total, we will take the home team getting "the hook" here as we liked the fact they didn't throw in the towel last week.

BYU 43 Western Kentucky 12. Two teams on clear ends of the spectrum. We've upgraded BYU more than any team in the country this year. The Cougars are 6-0 SU outscoring their opponents by 31 ppg, outgaining them by 263 ypg and are 5-1 ATS covering by 13 ppg. Meanwhile, we have downgraded WKU more than any other team in the country as the Hilltoppers, a preseason CUSA contender are 0-6 ATS (-10 ppg). They are getting outscored by 10 ppg, outgained by 93 and nearly lost to an FCS team last week. We would take BYU here as a play but we are worried they might pull the starters early with a huge game at Boise St on deck on Friday. Note this is the longest road trip for WKU since 1997!

North Texas at UTEP has been postponed.

Boise St 31 AIR FORCE 18. Boise has routinely struggled vs Air Force after joining the Mountain West as they are 5-3 SU out-scoring them by only 6.4 ppg. We don't think this year's short-handed Air Force team will give them a scare. The Falcons were outright upset at San Jose St last week but note AF actually had a 298-294 yard edge. The biggest sequence of game came right before the half. With the game tied 0-0, Air Force had a first and goal at the 3-yard line but were stopped on downs! The Falcons had their nine-game win streak snapped. Meanwhile, Boise had 25-12 first down and 450-203 yard edges, led 28-0 at halftime and cruised to a win and cover over Utah St. Boise QB Hank Bachmeier was 20 of 28 for 268 yards and 3 TD's. This line was Boise -8 at the Circa world openers. Obviously, there has been so much value lost especially with BYU on deck on Friday for the Broncos.

Nevada 34 UNLV 21. First ever game in Allegiant Stadium for the Rebels and why not the Battle for the Fremont Cannon against their arch rival. The two teams had disparate results in their openers. Nevada led Wyoming 28-6 late 3Q and it could have been worse as they were stopped on downs at the Wyoming 1-yard line and fumbled at the Wyoming 29. Despite a big Wyoming comeback, the Wolf Pack managed the upset in OT. QB Carson Strong was 39 of 52 for 420 yards and 4 TD's. On the other side, San Diego St led 27-0 at halftime and UNLV only had 15 yards at that point. Max Gilliam got the shocking start at QB for the Rebels and was 13 of 21 for 105 yards and a TD. Kenyon Oblad and Justin Rogers also played but were a combined 4 of 8 for 1 yard! Another game that has seen significant value lost since the Circa World opener which saw Nevada -8.

2★ Rice 31 SOUTHERN MISS 28. Rice had to wait a long time to play their season opener and it was heartbreak for them losing in two overtimes. We never thought it was possible but a game-winning FG was no good after it remarkably hit the uprights and cross-bars four times already being hailed as the "quadruple doink". We think they will have more "luck" in this one against a Southern Miss team that is down to a 3rd string head coach with Jay Hopson resigning after game one and now interim coach Scotty Walden off to Austin Peay. Tim Billings will be their third coach this season. They could also be without their top 2 QB's as Tate Whatley took a hard hit at the end of the Liberty game and normal starter Jack Abraham didn't make the trip. The Golden Eagles already are just 1-4 ATS this season failing to cover by 13 ppg. Meanwhile we expect improvement from Rice in game 2.

SMU 37 Navy 24. Tough to get a handle on this Navy team. Despite their 3-3 record, they are getting outscored by 16 ppg and are -139 ypg and last week fell to Houston 37-21 as Navy actually passed for 206 yards. They are only averaging 186 rush ypg, their worst since 2001, the year before Paul Johnson arrived. Meanwhile, SMU might have some "bubble burst" after losing to Cincinnati 42-13 ending their perfect season. They allowed 313 rush yards which isn't a great look facing the option. Navy actually has owned the series going 12-2 SU (+15.6 ppg) and 10-4 ATS (+13.7 ppg) but we don't see much value here.

IOWA 24 Northwestern 20. We thought Northwestern might be one of the most improved teams in the country this year but we didn't anticipate how good they would look in destroying Maryland 43-3 last week. NW dominated just like the final would indicate with 31-14 first down and 537-207 yard edges including 325-64 on the ground. Meanwhile, Iowa was upset at Purdue, their first loss in 22 games as a road favorite. However, the Hawkeyes had a 460-386 yard edge including 195-104 on the ground. With Iowa up 20-17 late in 4Q and driving, the Hawkeyes fumbled at the Purdue 28. If this were a typical season and the two teams had played 6-7 games already, this would have been a solid bounce back spot to take Iowa here.

OKLAHOMA ST 31 Texas 28. Texas got a much-needed win last week as they led Baylor 27-3 entering the 4Q. Meanwhile, Oklahoma St was "back-doored" by Iowa St as we cashed on these pages. That's if you played the Cyclones earlier in the week. If you waited until gameday to bet, you either pushed or lost and note you are taking the worst of the number usually if you wait. Still, it was an impressive win as OSU had 24-18 first down and 461-389 yard edges. Oklahoma St has fared well vs Texas the last decade going 7-3 SU (+4.9 ppg) and 6-4 ATS (+3.3 ppg) and the whole play on Texas head coach Tom Herman as an underdog is starting to get priced out as he is just 4-5 ATS in that role his last 9 (was 12-1). However, we have to take "the hook" again here with the underdog.

Wisconsin 23 NEBRASKA 20. Obviously, the dynamics for this game have changed dramatically. First, Wisconsin crushed Illinois last week as they had 23-8 first down and 430-218 yard edges. QB Graham Mertz was 20 of 21 for 248 yards and 5 TD's in his debut! However, Mertz and Chase Wolf are out indefinitely due to testing positive for COVID and will miss the next 3 games. Remember, the Badgers area already down starting QB Jack Coan to a foot injury which means they will turn to 4th string Danny Vanden Boom who has one career pass attempt. The 6-foot-5 Vanden Boom was 28-0 as a starter in high school and was the Wisconsin Gatorade Player of the Year. We downgraded the Badgers 7 points in our power ratings. Meanwhile, Nebraska was crushed at Ohio St 52-17. Still, their QB's played well as Adrian Martinez and Luke McCaffrey combined to go 16 of 20 for 160 yards and also ran for 165 yards. Right now, we lean UNDER.

Right before we went to press on Wednesday, this game has been cancelled due to COVID issues at Wisconsin.

Oklahoma 41 TEXAS TECH 24. After losing two close games to Kansas St and Iowa St, the Sooners have now won and covered back-to-back games. Last week OU had 23-18 first down and 498-351 yard edges in a 33-14 win at TCU. "I'm excited about where this team can go," Riley said. "I hope the team senses it. We're still not even scratching the surface of what we feel like we can be. But we're getting closer." Meanwhile, Texas Tech is off their best performance of the season as they beat West Virginia despite a -90 yard deficit. The key play was a 56-yard fumble return TD by TT with 8:44 left that was the final score! QB Henry Colombi in his first start completed 22 of 28 passes for 168 yards and one score. He also ran for 40 yards and another TD. We think Oklahoma may be a "play-on" team down the stretch.

TULANE 33 Temple 29. If you're wondering why the line has moved a bit this week in the direction of Tulane, note that Temple QB Anthony Russo is questionable (Shoulder). The Owls haven't really impressed us so far this season but they did out-gain Memphis last week on the road. Meanwhile, Tulane was fortunate to cover vs UCF last week in the big underdog role as they had 36-21 first down and 689-340 yard deficits. Their young QB Pratt does have a 7-2 ratio so far. We're passing until Russo's status clears. The OVER might worth a look.

UL-LAFAYETTE 37 Texas St 20. ULL has taken a ton of money in the market each of the last two weeks and against two solid teams in Coastal Carolina and UAB. We think that money has been misguided. The Ragin' Cajuns lost outright to Coastal and last week ended UAB's 21-game home win streak, but it was due to +2 TO's and a 100-yard kick return TD. Meanwhile, Texas St probably needs a week off after a 5-game road trip and they're not scheduled to get one until the regular season is over (keep that in the back of your minds for later). The Bobcats are now 1-6 SU on the season and have failed to cover in 3 straight games after a 3-1 ATS start. UL-Lafayette is 7-0 SU (+22 ppg) and 7-0 ATS (+13.5 ppg) vs Texas St. We could only look their way here.

ARKANSAS ST 37 Troy 34. Arkansas St was humbled last week in a 28-point loss at Appalachian St. App St had a 521-368 yard edge including 305-73 on the ground and both Arkansas St QB's struggled. The Red Wolves defense continues to struggle allowing 41 ppg and 488 ypg. They're taking on a Troy team off a loss to Georgia St at home. Troy got a TD with :37 left but their 2-point conversion failed. Starting quarterback Gunnar Watson left with under minute remaining in the first quarter (check status) and Jacob Free was 24 of 38 for 329 yards, two touchdowns and two picks replacing him. We don't anticipate being involved here especially until Watson's situation clears up.

BAYLOR 26 TCU 25. We want to play against both of these teams. TCU has lost two straight and were easily handled at home to Oklahoma last week. Meanwhile, it sounds like a broken record but Baylor is an inexperienced team with a first-year coach and have been dealing with major COVID issues. They were fortunate to push at Texas last week as they trailed 27-3 entering the 4Q. With that being said, we are a bit surprised to see TCU laying 2.5 here. We agreed with the opener which had the game "pick".

Ucf 41 HOUSTON 38. This total in this game is 82.5. That's the highest total in any college football game since November 23, 2018 when the total was 88 in the Oklahoma/West Virginia game. Totals of 80 or more are 18-17-1 to the OVER all-time. UCF games are 4-1 to the OVER this year as they are averaging 78 ppg. Last week UCF had 36-21 first down and 689-340 yard edges but couldn't cover vs Tulane. QB Gabriel already has thrown for 2,178 yards and a 19-2 ratio. Meanwhile, UH did get a win and cover at Navy. We want to take UCF here but think this is a last team with the ball wins type of game.

Follow Brad on Twitter: @BradPowers7

Iowa St 40 KANSAS 13. This is the biggest road favorite role ever for Iowa St as they are only 1-4 ATS all-time laying 14 or more points on the road. It's also the biggest conference favorite role for them ever! Even after a loss last week to Oklahoma St (we cashed on these pages with them as long as you bet it before gameday), the spread is deserved considering how bad Kansas has been. The Jayhawks are 0-4-1 ATS and are failing to cover by 14.5 ppg. However, last week they had a misleading blowout loss as Kansas St only had a 381-320 yard edge. Kansas St got a 55-yard punt return TD, a 24-yard interception return TD and another 52-yard punt return TD all in the first half! We don't like playing on teams in historical outliers, so we'd actually take the "hook" on the 28.5 here.

AUBURN 31 Lsu 30. We are surprised to see LSU laying 3 on the road here. Yes, they looked mighty impressive in their win and cover over South Carolina last week. Yes, TJ Finley was 17 of 21 for 265 yards and 2 TD's in his first start and they could get back Myles Brennan here. BUT this is asking much of a LSU defense that has struggled. On the other side, we are no fans of Auburn this year as they have been extremely fortunate to get to 3-2. They have benefited from controversial calls in all three of their wins! However, Auburn QB Bo Nix directed two fourth-quarter touchdown drives last week and they should be playing with more confidence. Note the home team in the series is on a 17-3 SU run.

Uab 30 LOUISIANA TECH 20. Both teams blew double-digit second half leads last week. UAB should be plenty angry after seeing their 21-game home win streak come to an end. They led ULL 20-10 and at that point the only TD they allowed was a 100-yard kick return TD right before the half. However, they allowed UL-Lafayette a couple of long scoring drives and QB Lucero threw a couple of INT's. Meanwhile, we had the OVER in the Louisiana Tech/UTSA game and the two teams settled for six FG's including 4 of less than 30 yards (some of you pushed). Head coach Skip Holtz is profitable long-term as an underdog but is only 1-5 ATS as home dog here since 2013 failing to cover by 10.3 ppg. Still, we can't lay doubles on the road with a struggling UAB offense.

2★ Ole Miss 41 VANDERBILT 20. We're going to take the road chalk here. Ole Miss is better than their 1-4 record as they are only -35 ypg on the season but have been done in by a -7 TO margin in their last two games. Sure, their defense is atrocious allowing 556 ypg and 45 ppg but their offense is averaging 521 ypg and we expect a bounce back from QB Matt Corral here (3-8 TD-to-INT ratio last two games after a 9-1 ratio the first three). They're taking on a short-handed Vanderbilt team that hasn't played in three weeks due to COVID issues. The Dores are -24 ppg and -195 ypg on the season and we don't think their offense can keep pace here. Lane Kiffin doesn't seem like a "take the foot off the gas" pedal type of guy.

Appalachian St 42 UL-MONROE 14. Historical number here. Appalachian St is in their largest away favorite role in school history while UL-Monroe is in their largest home underdog role in school history. Yes, ULM has been arguably the worst team in the country so far at 0-6 SU (-23 ppg) and 1-5 ATS (-13 ppg). However, they've shown signs of life in a couple recent games including losing at the goal line to Georgia Southern at home and then last week were only -35 yards vs South Alabama. Our numbers (see page 6) say ULM is worth a look here. Put the clothespin on and take the stinky dog.

ALABAMA 47 Mississippi St 17. Mississippi St comes in off a much-needed bye. After the LSU game, their offense has been stuck in neutral averaging only 10 ppg and 304 ypg. Their defense has exceeded expectations so far allowing only 296 ypg despite being put in really bad positions as they are -10 in TO's on the season. Meanwhile, The Tide offense continues to roll as they are averaging 48 ppg and 566 ypg. QB Mac Jones is completing 79% of his passes. However, they did lose leading receiver Jaylen Waddle (22.3 yards per catch) to injury last week. Despite his pass defense 280 yards per game this season, we expect Nick Saban to have a solid game-plan in defending the "Air Raid". However, we don't want to lay 31.

TEXAS A&M 34 Arkansas 20. Both teams come in off a bye. This game is being played in College Station for the first time since 2012 and since the Aggies joined the SEC, they are a perfect 8-0 SU (+14 ppg) in the series. Arkansas has been one of the most improved teams in the country this year under new coach Sam Pittman who made two outstanding hires in O.C. Kendal Briles and D.C. Barry Odom. The Hogs are 4-0 ATS covering by 12 ppg. Still they are -72 ypg and have benefitted from +6 TO's. We think they are starting to get a little over-priced in the market. Meanwhile, Texas A&M is starting to live up to that lofty preseason hype. The Aggies are 3-1 and could be favored in each of their remaining 6 games.

FLORIDA 35 Missouri 24. Welcome back Florida Gators who haven't played the last couple of weeks due to COVID issues. In fact, the Gators didn't even practice for two weeks. They take on a Missouri team that is starting to find themselves under first year head coach Eli Drinkwitz. Last week Missouri dominated Kentucky much more than the 20-10 final with 26-8 first down and 421-145 yard edges including 220-95 on the ground. Missouri had a 43:10-16:50 TOP edge! "Both sides of the ball, they played the game exactly the way we wanted to be able to win, and that doesn't happen very often against a really good team," Missouri coach Eli Drinkwitz said. "I'm shocked by these stats. I've never been in a game like that." We lean towards the dog here as Florida could be a bit rusty.

Georgia 27 KENTUCKY 10. Georgia is 35-5 SU vs Kentucky since 1980 including a current 10-0 SU (+19.5 ppg) and 7-3 ATS (+2 ppg) run. Georgia comes in off the bye after allowing the final 24 points to Alabama, a game UGA still led 24-20 late 3Q. We're not sure the Bulldogs can win the National Title with Stetson Bennett at QB, but their defense is good enough to shutdown a Kentucky offense that is struggling as they have failed to top 300 yards in any of their last 3 games and now takes on the best defense in the country. Last week Missouri dominated them much more than the final (see above Missouri write-up). QB's Terry Wilson and Joey Gatewood combined for 5 of 15 for 50 yards and it doesn't get any easier here. Does Kentucky score more than 10?

SAN JOSE ST 34 New Mexico 21. This game was moved to San Jose as New Mexico continues to deal with COVID issues. Their game last week vs Colorado St was cancelled. We do think they will be an interesting team this year as we love their new head coach Danny Gonzalez who hired Rocky Long as his D.C. Meanwhile, San Jose St comes in off the upset win over Air Force from last week. AF actually had a 298-294 yard edge and the biggest sequence of game came right before the half. With the game tied 0-0, Air Force had a first and goal at the 3-yard line but were stopped on downs! Nick Starkel got the start at QB for San Jose and was 22 of 29 for 226 yards and 2 TD's. San Jose State has won back-to-back games for the first time since 2014! Make it 3 straight here but we can't lay the near 2 TD's. We do lean with the UNDER.

Updated College Football Power Ratings for Week 9

Rank	Team	Pre	10/28	Rank	Team	Pre	10/28	Rank	Team	Pre	10/28	Rank	Team	Pre	10/28	Rank	Team	Pre	10/28	Biggest Movers Since Preseason	Pts
1	Clemson	96.42	99.92	33	Boise State	74.07	75.57	65	UCLA	68.16	67.66	97	San Jose State	57.00	59.00		Marshall			+9.0	
2	Ohio State	98.16	99.16	34	South Carolina	74.35	75.35	66	Buffalo	67.60	67.60	98	Georgia State	54.99	58.99		BYU			+9.0	
3	Alabama	94.97	98.47	35	Ole Miss	76.12	75.12	67	UAB	67.13	66.63	99	Maryland	61.98	58.48		Liberty			+8.0	
4	Georgia	89.50	92.00	36	Louisville	75.84	74.84	68	Duke	67.85	66.35	100	Charlotte	56.97	58.47		Arkansas			+7.0	
5	Notre Dame	86.16	86.66	37	Memphis	76.61	74.61	69	Georgia Tech	69.11	66.11	101	Florida Atlantic	62.31	58.31		Tulsa			+6.5	
6	Florida	87.90	85.90	38	Nebraska	75.01	74.51	70	Illinois	67.52	66.02	102	Utah State	59.25	57.75		Coastal Carolina			+6.0	
7	Oklahoma	88.77	85.77	39	TCU	75.70	74.20	71	San Diego State	64.12	65.62	103	Kent State	56.69	56.69		Miami (FL)			+5.0	
8	Michigan	83.60	85.10	40	Stanford	74.98	73.98	72	Tulane	66.41	64.91	104	Syracuse	62.38	56.38		Wake Forest			+5.0	
9	Oregon	86.52	85.02	41	California	74.06	73.56	73	Ohio	64.80	64.80	105	USF	62.65	56.15		UTEP			+5.0	
10	Penn State	86.17	84.17	42	Houston	71.01	73.51	74	Colorado	64.73	64.73	106	East Carolina	57.91	55.41		UTSA			+4.5	
11	Texas A&M	86.23	83.73	43	Missouri	69.95	73.45	75	Michigan State	67.71	64.71	107	Northern Illinois	55.23	55.23		Georgia State			+4.0	
12	USC	83.71	83.71	44	Baylor	74.37	73.37	76	Arizona	65.24	64.24	108	Vanderbilt	58.19	55.19		Pittsburgh			-4.0	
13	North Carolina	81.71	82.71	45	Purdue	72.85	73.35	77	Army	62.22	64.22	109	Western Kentucky	66.17	55.17		Florida Atlantic			-4.0	
14	Oklahoma State	81.00	81.50	46	Arizona State	73.17	73.17	78	Coastal Carolina	57.39	63.39	110	South Alabama	52.51	55.01		Auburn			-5.5	
15	LSU	87.88	81.38	47	Kansas State	72.07	73.07	79	Liberty	55.20	63.20	111	Eastern Michigan	54.74	54.74		Syracuse			-6.0	
16	Texas	84.24	81.24	48	Virginia	72.59	72.09	80	Hawaii	60.86	62.86	112	Rice	54.94	54.44		FIU			-6.0	
17	Miami (FL)	76.16	81.16	49	Boston College	68.90	71.90	81	Temple	63.46	62.46	113	UTSA	49.66	54.16		LSU			-6.5	
18	Iowa State	79.87	80.87	50	West Virginia	72.34	71.84	82	Wyoming	64.53	62.03	114	Southern Miss	61.74	53.24		Middle Tenn			-6.5	
19	Auburn	85.95	80.45	51	Appalachian State	72.03	71.53	83	Colorado State	62.10	61.60	115	Louisiana Tech	60.07	53.07		Florida State			-7.0	
20	BYU	70.88	79.88	52	Tulsa	64.97	71.47	84	Air Force	64.74	61.24	116	Middle Tennessee	59.02	52.52		Wisconsin			-8.0	
21	Utah	79.56	79.56	53	Wake Forest	66.46	71.46	85	Nevada	60.11	61.11	117	North Texas	54.76	52.26		Kansas			-8.0	
22	Wisconsin	87.48	79.48	54	Marshall	62.12	71.12	86	Toledo	60.87	60.87	118	Texas State	49.20	52.20		Southern Miss			-8.5	
23	Virginia Tech	78.94	79.44	55	Arkansas	63.97	70.97	87	Central Michigan	61.17	60.67	119	Kansas	59.13	51.13		UL-Monroe			-10.0	
24	UCF	81.20	79.20	56	Mississippi State	69.67	70.67	88	Georgia Southern	63.00	60.50	120	UNLV	52.54	50.54		Navy			-11.0	
25	Indiana	78.68	78.68	57	Pittsburgh	73.92	69.92	89	Western Michigan	60.41	60.41	121	New Mexico	49.98	49.48		W. Kentucky			-11.0	
26	Washington	78.81	78.31	58	Florida State	76.86	69.86	90	Rutgers	57.87	60.37	122	FIU	55.27	49.27						
27	Iowa	79.68	77.68	59	Washington State	70.25	69.75	91	Fresno State	62.75	60.25	123	UTEP	40.04	45.04						
28	Cincinnati	74.79	76.79	60	SMU	69.06	69.56	92	Ball State	59.71	59.71	124	Akron	43.46	43.46						
29	Kentucky	78.24	76.74	61	Texas Tech	72.54	69.54	93	Arkansas State	60.16	59.66	125	Bowling Green	43.28	43.28						
30	Minnesota	78.17	76.67	62	Oregon State	68.53	68.53	94	Troy	60.01	59.51	126	UL-Monroe	51.86	41.86						
31	Northwestern	73.72	75.72	63	NC State	69.38	68.38	95	Navy	70.10	59.10	127	Massachusetts	36.36	34.86						
32	Tennessee	78.63	75.63	64	UL-Lafayette	68.86	67.86	96	Miami (OH)	59.52	59.02										

Week 9 Computer Projected Lines for Every CFB Game

For the past three seasons we have posted computer projected lines for every game. Games where there was of difference of more than 3 points saw our computer lines actually beat the Vegas line at a 302-252-12 (55%) clip the last three years. That's pretty solid and actually better than our own handicapping in some seasons. Last week's plays went 2-2 and now the record for this year is 25-17. Keep in mind, these computer lines don't take into consideration off-the-field factors like revenge or flat spots. They are basically a power-rating number difference between the two teams that also takes into consideration the home field advantage.

Of the 6 games where our computer is off more than 3 points compared to the Vegas line (highlighted), our favorite team this week to back would be **Indiana -10**.

The Comp column is the computer projected line and the Diff column is the difference between the Vegas line and the Computer line. "+" numbers in the difference column say back the underdog. "-" numbers in the difference column say back the favorite. Let us know if you have questions.

Thursday, Oct 29th	Line	Comp	Diff	Saturday, Oct 31st	Line	Comp	Diff
103 South Alabama				151 Boise State			
104 Georgia Southern	-5	-7.7	-2.7	152 Air Force	+14	+11.8	+2.2
157 Colorado State				153 Nevada			
158 Fresno State	+1.5	-0.6	+2.1	154 UNLV	+14	+9.3	+4.7
Friday, October 30th	Line	Comp	Diff	155 Rice			
105 Marshall				156 Southern Miss	-1.5	-0.8	+0.7
106 FIU	Cancelled			159 Navy			
107 East Carolina				160 SMU	-13	-12.5	+0.5
108 Tulsa	-17	-17.8	-0.8	161 Northwestern			
131 Minnesota				162 Iowa	-2.5	-4.2	-1.7
132 Maryland	+20	+16.7	+3.3	163 Texas			
141 Hawaii				164 Oklahoma State	-3.5	-2.8	+0.7
142 Wyoming	+1	-1.4	+2.4	165 Wisconsin			
Saturday, Oct 31st	Line	Comp	Diff	166 Nebraska	Cancelled		
109 Michigan State				167 Oklahoma			
110 Michigan	-24.5	-22.9	+1.6	168 Texas Tech	+14.5	+14.2	+0.3
111 Wake Forest				169 Temple			
112 Syracuse	+11	+13.1	-2.1	170 Tulane	-3.5	-4.5	-1.0
113 North Carolina				171 UL-Lafayette			
114 Virginia	+6.5	+8.4	-1.9	172 Texas State	+16.5	+14.4	+2.1
115 UTSA				173 Troy			
116 Florida Atlantic	-5	-5.9	-0.9	174 Arkansas State	-2.5	-2.4	+0.1
117 Kansas State				175 TCU			
118 West Virginia	-3.5	-1.0	+2.5	176 Baylor	+2.5	-0.9	+3.4
119 Boston College				177 Central Florida			
120 Clemson	-31	-31	0.0	178 Houston	+2.5	+3.4	-0.9
121 Virginia Tech				179 Iowa State			
122 Louisville	+3.5	+2.6	+0.9	180 Kansas	+28.5	+28.5	0.0
123 Notre Dame				181 LSU			
124 Georgia Tech	+20	+18.6	+1.4	182 Auburn	+3	-1.8	+4.8
125 Charlotte				183 UAB			
126 Duke	-9.5	-9.6	-0.5	184 Louisiana Tech	+12	+11.3	+0.7
129 Coastal Carolina				185 Ole Mis			
130 Georgia State	+2.5	+3.2	-0.7	186 Vanderbilt	+16.5	+18.4	-1.9
133 Indiana				187 Appalachian St			
134 Rutgers	+10	-16.8	-6.8	188 UL-Monroe	+32	+28.4	+3.6
135 Ohio State				189 Mississippi St			
136 Penn State	+12	+12.0	0.0	190 Alabama	-30.5	-30.8	-0.3
137 Memphis				191 Arkansas			
138 Cincinnati	-6.5	-4.7	+1.8	192 Texas A&M	-12.5	-15.0	-2.5
139 Purdue				193 Missouri			
140 Illinois	+7	+5.8	+1.2	194 Florida	-13	-14.7	-1.7
143 San Diego State				195 Georgia			
144 Utah State	+7.5	+5.1	+2.4	196 Kentucky	-15	-13.3	+1.7
145 Western Kentucky				199 New Mexico			
146 BYU	-28.5	-26.7	+1.8	200 San Jose St	-13.5	-10.8	+2.7
149 North Texas							
150 UTEP	Postponed						

Top 20 CFB ATS Trends for Week 9

- Georgia Southern is 6-0 SU (+27.5 ppg) and 5-1 ATS (+18.4 ppg) vs South Alabama. This week the Golden Eagles are 5.5-point home favorites.
- Teams playing their first game of the season are 25-10-2 ATS (+5 ppg) vs teams that have already played this year. Colorado St and New Mexico qualify for this trend this week.
- Michigan St is on a 10-2 ATS run vs rival Michigan but has failed to cover the last two. This week the Spartans are 24.5-point underdogs which is tied for the most in the rivalry since 1992.
- Kansas St is the best underdog team in the country at 47-23-1 ATS (67%, +4.6 ppg) since 2009. This week the Wildcats are 3.5-point underdogs at West Virginia.
- Penn St has covered 4 straight vs Ohio St and all of the games have been decided by 11 points or less. This week Penn St is a 11.5-point underdog vs Ohio St.
- WKU is 0-6 ATS (-10 ppg) this year and are making their longest road trip since 1997 this week. The Hill-toppers are 28.5-point underdogs at BYU.
- Navy has owned the SMU going 12-2 SU (+15.6 ppg) and 10-4 ATS (+13.7 ppg) since 1995. This week the Midshipmen are 14-point road underdogs.
- Northwestern is 27-11 ATS (+5 ppg) as a road underdog since 2009. This week the Wildcats are 2.5-point underdogs at Iowa.
- The whole play on Texas head coach Tom Herman as an underdog is starting to get priced out as he is just 4-5 ATS in that role his last 9 (was 12-1). This week the Horns are 3.5-point underdogs at Oklahoma St.
- Oklahoma St has fared well vs Texas the last decade going 7-3 SU (+4.9 ppg) and 6-4 ATS (+3.3 ppg).
- Wisconsin is 8-1 SU (+18.2 ppg) and 7-2 ATS (+11.9 ppg) vs Nebraska since the Huskers joined the Big Ten in 2011. This week the Badgers are 3-point favorites at Nebraska even with a 4th-string QB.
- UL-Lafayette is 7-0 SU (+22 ppg) and 7-0 ATS (+13.5 ppg) vs Texas St. This week the Ragin' Cajuns are 16.5-point road favorites at Texas St.
- This week's total in the UCF/Houston game is 82.5! That's the highest total in any college football game since November 23, 2018 when the total was 88 in the Oklahoma/West Virginia game. Totals of 80 or more are 18-17-1 to the OVER all-time.
- Iowa St is a 28.5-point favorite at Kansas this week. That is the biggest road favorite role ever for Iowa St as they are only 1-4 ATS all-time laying 14 or more points on the road. It's also the biggest conference favorite role for them ever!
- The home team in the LSU/Auburn series is on a 17-3 SU run. However, this week Auburn finds themselves a 3-point home underdog.
- Louisiana Tech head coach Skip Holtz is profitable long-term as an underdog but is only 1-5 ATS as home dog since 2013 failing to cover by 10.3 ppg.
- Appalachian St is a 32-point favorite at UL-Monroe this week. That's the largest away favorite role for them in school history.
- UL-Monroe is in their largest home underdog role in school history this week catching 32 points to Appalachian St.
- Notre Dame is a 20-point favorite at Georgia Tech. That's their largest away favorite role since 2013.
- Georgia is 35-5 SU vs Kentucky since 1980 including a current 10-0 SU (+19.5 ppg) and 7-3 ATS (+2 ppg) run. This week the Bulldogs are 15-point favorites at UK.

4★ = BEST
3★ = BETTER
2★ = GOOD
1★ = FAIR

THE POWERS' PACK

2★ BALTIMORE (-3.5) over Pittsburgh
1★ New Orleans (-4) over CHICAGO
1★ UNDER 42.5 New England/BUFFALO

Games in Rotation Order

HOME TEAM IN CAPS

Thursday, October 29th

CAROLINA 26 Atlanta 23. Two franchises heading in opposite directions. The Panthers just upset the Falcons a couple weeks ago 23-16 as 2.5-point road underdogs cashing on these pages. Last week the Falcons lost another heart-breaker in the final seconds to the Lions. That's now 3 games this season where Atlanta lost a game where they had a 96% win probability or higher in the 4Q! Meanwhile, Carolina got the cover for us on these pages in a loss at New Orleans. This is their lone primetime match-up of the season and we have a slight lean on them.

Sunday, November 1st

Indianapolis 24 DETROIT 23. The Colts come in off a bye after they nearly lost outright to Cincinnati. Give them credit for rallying from a 21-0 deficit as QB Rivers had season highs in pass yards (371) and TD passes (3). While these two don't often play, note Rivers played here last year and lost with the Chargers 13-10. Meanwhile, the Lions finally have some positive momentum as they have won and covered 3 of their last 4 and won on the final play of the game last week. They're now .500 on the season and starting to live up to those preseason expectations where the sharps were betting them in the summer. If you can find +3 with Detroit, that's the play.
GREEN BAY 29 Minnesota 21. Note early forecast has 26 mph wind! The Packers got a nice bounce-back win last week in Houston as QB Rodgers threw for 4 TD's. Meanwhile, the Vikings are off a bye and we will see if they can jump-start what has been a very disappointing 1-5 SU campaign. Cousins had a multi-interception game and he is 0-20 now when doing so. The Packers won the season-opening match-up between the two teams in a game that wasn't as close as the 43-34 score. That's now 5 straight covers in the series for Green Bay. A remarkable stat is that Minnesota is 0-16-1 SU since 2016 outdoors against teams with a winning record. We lean with the Packers and UNDER.

1★ UNDER 42.5 Buffalo 21 NEW ENGLAND 18. We simply can't believe how inept the Pats have been the last few weeks. Last week was their worst home loss ever under Belichick and they've now lost 3 straight games for the first time since 2002. We've always been under the mindset that it was more Belichick than Brady as far as the New England dynasty but this year is starting to sway our opinion. The Patriots have won 11 consecutive division titles and this is the game where Buffalo can put some real distance between them. The Bills somehow only managed 6 FG's despite reaching the red zone 8 times in a non-cover vs the Jets last week. New England is 35-4 SU (+12.2 ppg) and 24-13-2 ATS (+5.2 ppg) in the series since late 2000. Can't decide on a side but we do like the UNDER. New England is a dead-nut UNDER team right now and Buffalo hasn't had much success vs New England defense failing to top 17 points any of their last 6 meetings. Add in 17 mph wind and some rain and you have our top total.

Tennessee 29 CINCINNATI 24. The Titans come in off their first loss of the season as they were dominated early by Pittsburgh before rallying in the second half. Another missed FG by Gostowski (now 6 on the year)! Meanwhile, Cincinnati just can't win close games and sooner or later it's not bad luck, it's just a reflection of poor coaching. Still, the Bengals are 5-1-1 ATS on the season and obviously the only time they didn't cover a game was when we bet them on these pages vs Baltimore. Rookie QB Joe Burrow looks like a keeper as he threw for 406 yards and 3 TD's last week and now is completing 67% of his passes for the season. However, he is playing behind a banged up OL and there are rumors of many veterans being disgruntled with the team. We're not getting involved here.

CLEVELAND 27 Las Vegas 24. Note early forecast has 24 mph wind! The Browns are now 5-2 on the season and appear to be heading to their first playoff berth since 2003. Last week QB Baker Mayfield completed 20 straight passes at one point and threw 5 TD passes. However, last week's dramatic win in the final seconds did come at a cost as WR Odell Beckham is lost for the season with a torn ACL. Meanwhile, we had a bad pick on these pages with Las Vegas last week. COVID news hit hard for them after our release and their OL didn't practice all week. It looked like their defense didn't practice either as they allowed 454 yards and 45 points to Tampa Bay. We lean Browns.

KANSAS CITY 34 N.Y. Jets 16. 19-point or more favorites are 16-0 SU (+19 ppg) and 6-10 ATS (-2 ppg) since 1989. This line makes sense considering the Chiefs are the best team in football and the 0-7 SU and 1-6 ATS Jets are the worst. Last week, somehow the Chiefs managed 43 points despite not converting a single 3rd down! That's what a pair of non-offensive TD's will do for you which sank our UNDER recommendation. Meanwhile, the Jets did get that first cover of the season but note the Bills only scored 6 FG's on EIGHT, that's right EIGHT trips to the red zone vs them. Not sure we will be involved here, but we do not want to lay the historic number, that's for sure.

L.A. Rams 27 MIAMI 21. It's Tua time for the Dolphins who have surprisingly decided to go with the rookie QB here even after back-to-back wins by Ryan Fitzpatrick (70% completions this year). Will be interesting to see how Tua does against a fearsome L.A. Rams front that just dominated the Bears on MNF. It is also interesting to see Tua's replacement Mac Jones post similar numbers at Alabama this year without four first-round WR's like Tua had. However, it's not an ideal spot for L.A. as they are on a short week, traveling across country for the fourth time already and playing an early start time. But hey, that's why this line is only 4. We think it should be 6! Lean Rams.

1★ New Orleans 24 CHICAGO 17. Note early forecast has 24 mph wind! We told you the Bears were frauds as they were exposed on MNF vs the Rams. Chicago has now been outgained by an average of 34 ypg for the season despite their 5-2 record. Their offense hasn't topped 280 yards in any of the their last 4 games as they can't consistently run the football averaging only 44 rush ypg in those games. Meanwhile, they're taking on a Saints team that is starting to feel good about themselves with 3 straight wins. Chicago might be without WR Robinson and he is their entire offense.

Seattle 27 SAN FRANCISCO 26. Just when we were ready to write off the 49ers, here they come! Now off back-to-back outright upset wins over the Rams and Patriots in convincing fashion. Last week they had a 467-241 yard edge handing the Pats their worst home loss ever under Bill Belichick. They have a chance to really make things interesting if they can beat the Seahawks here who come in off their first loss of the season. The Seahawks are an overrated team getting outgained by 54 ypg and they have the worst defense in the NFL allowing 479 ypg. We lean with the dog.
PHILADELPHIA 26 Dallas 17. The Cowboys are now 0-7 ATS this season after a disastrous blowout loss to the Redskins where Andy Dalton was KO'd on a vicious hit. Ben DiNucci could get the start here for them. The Cowboys defense is so bad that it just gave up 125 rushing yards in the first half to a Washington team that had the worst rush attack in the NFL. The Cowboys have trailed by 14 or more points in each of their last 6 games. Meanwhile, the Eagles have new life after a comeback win over Giants. We will take the Eagles here but there is no concrete line up at press-time. You can bet the Eagles -7.5 in New Jersey.

L.A. Chargers 23 DENVER 21. The Chargers have been impressive under rookie QB Justin Herbert who finally got his first SU win of his career last week over Jacksonville. He has topped 250 yards in each of his five starts, something only Patrick Mahomes can say. Meanwhile, they're taking on a Broncos team that somehow lost by 26 to the Chiefs last week despite a 411-286 yard edge. Do you really want to lay 3 (-120) on the road with a Chargers team that is just 3-13 SU in one-possession games under head coach Anthony Lynn? Lean Broncos.

2★ BALTIMORE 27 Pittsburgh 20. Showcase game here between two long-time rivals. Shockingly, this is only the 2nd time ever Pittsburgh is off to a 6-0 start. The other came in 1978 when they won the Super Bowl. They dominated Tennessee early last week and then hung on for dear life. That's two weeks after a rivalry game with Philly and a week after a big effort in a blowout over Cleveland. How many more big efforts can they give? Meanwhile, Baltimore comes in off a bye and Harbaugh is 12-3 SU (+8.3 ppg) and 10-5 ATS (+5.6 ppg) in that role since taking over here in 2008. They haven't been overwhelming as much as last season but we still have them No. 2 in our power ratings. The look-ahead line for this game was Baltimore -6? Did Pittsburgh really get upgraded that much?

Monday, November 2nd

Tampa Bay 27 N.Y. GIANTS 17. A big number here for Tampa Bay who is off back-to-back blowout wins. Last week Tom Brady threw for 369 yards and 4 TD's while the offense put up 45 points in Vegas (much to our dismay on these pages). Meanwhile, the Tampa defense has held opponents to season-lows in 6 of their 7 games. Yes, the Giants are a miserable 1-6 SU but they have covered 3 of their last 4 games and both times they were getting more than a TD. They have extra rest here. The worry is Daniel "Fumbling and Stumbling" Jones vs the best defense he has seen this year. There's better value elsewhere on the card.

Kansas St (SU: 4-1, ATS: 4-1, O/U: 3-2)

Table with columns: Date, Opponent, Line Score, ATS, O/U. Rows include games against Arkansas State, Oklahoma, Texas Tech, TCU, Kansas, West Virginia, Oklahoma State, Iowa State, Baylor, Texas.

Kent State (SU: 0-0, ATS: 0-0, O/U: 0-0)

Table with columns: Date, Opponent, Line Score, ATS, O/U. Rows include games against Eastern Michigan, Bowling Green, Akron, Buffalo, Miami (OH), Ohio.

Kentucky (SU: 2-3, ATS: 2-3, O/U: 1-4)

Table with columns: Date, Opponent, Line Score, ATS, O/U. Rows include games against Auburn, Ole Miss, Mississippi State, Tennessee, Missouri, Georgia, Vanderbilt, Alabama, Florida, South Carolina.

Liberty (SU: 6-0, ATS: 4-2, O/U: 4-2)

Table with columns: Date, Opponent, Line Score, ATS, O/U. Rows include games against WKU, FIU, North Alabama, UL-Monroe, Syracuse, Southern Miss, Virginia Tech, Western Carolina, NC State, Coastal Carolina.

Louisiana Tech (SU: 3-3, ATS: 2-4, O/U: 3-3)

Table with columns: Date, Opponent, Line Score, ATS, O/U. Rows include games against Southern Miss, Houston Baptist, BYU, UTEP, Marshall, UTSA, UAB, North Texas, Rice, UL-Monroe, FIU.

Louisville (SU: 2-4, ATS: 3-2-1, O/U: 4-2)

Table with columns: Date, Opponent, Line Score, ATS, O/U. Rows include games against W. Kentucky, Miami (FL), Pittsburgh, Georgia Tech, Notre Dame, Florida State, Virginia Tech, Virginia, Syracuse, Boston College, Wake Forest.

LSU (SU: 2-2, ATS: 2-2, O/U: 3-1)

Table with columns: Date, Opponent, Line Score, ATS, O/U. Rows include games against Mississippi State, Vanderbilt, Missouri, South Carolina, Auburn, Alabama, Arkansas, Texas A&M, Ole Miss, Florida.

Marshall (SU: 5-0, ATS: 4-1, O/U: 3-2)

Table with columns: Date, Opponent, Line Score, ATS, O/U. Rows include games against East. Kentucky, Appalachian St, South Carolina, Auburn, Alabama, Arkansas, Texas A&M, Ole Miss, Florida, Massachusetts, Middle Tennessee, Charlotte.

Maryland (SU: 0-1, ATS: 0-1, O/U: 0-1)

Table with columns: Date, Opponent, Line Score, ATS, O/U. Rows include games against Northwestern, Minnesota, Penn State, Ohio State, Michigan State, Indiana, Michigan, Rutgers.

Massachusetts (SU: 0-1, ATS: 0-1, O/U: 0-1)

Table with columns: Date, Opponent, Line Score, ATS, O/U. Row: 10/17 at Ga Southern +30* 0-41 L u61

Memphis (SU: 3-1, ATS: 1-3, O/U: 1-2-1)

Table with columns: Date, Opponent, Line Score, ATS, O/U. Rows include games against Marshall, Arkansas State, UCF, Temple, Cincinnati, USF, Navy, Tulane.

Miami, FL (SU: 5-1, ATS: 4-2, O/U: 3-3)

Table with columns: Date, Opponent, Line Score, ATS, O/U. Rows include games against UAB, Louisville, Florida State, Clemson, Pittsburgh, Virginia, NC State, Virginia Tech, Georgia Tech, Wake Forest, North Carolina.

Miami, OH (SU: 0-0, ATS: 0-0, O/U: 0-0)

Table with columns: Date, Opponent, Line Score, ATS, O/U. Rows include games against Ball State, Buffalo, Ohio, Akron, Kent State, Bowling Green.

Michigan (SU: 1-0, ATS: 1-0, O/U: 1-0)

Table with columns: Date, Opponent, Line Score, ATS, O/U. Rows include games against Minnesota, Michigan State, Indiana, Wisconsin, Rutgers, Penn State, Maryland, Ohio State.

Michigan State (SU: 0-1, ATS: 0-1, O/U: 1-0)

Table with columns: Date, Opponent, Line Score, ATS, O/U. Rows include games against Michigan, Iowa, Indiana, Maryland, Northwestern, Ohio State, Penn State.

Middle Tennessee (SU: 2-5, ATS: 4-3, O/U: 3-3)

Table with columns: Date, Opponent, Line Score, ATS, O/U. Rows include games against Army, Troy, UTSA, West. Kentucky, FIU, North Texas, Rice-2ot, Charlotte, Marshall, Troy, Florida Atlantic.

Minnesota (SU: 0-1, ATS: 0-1, O/U: 1-0)

Table with columns: Date, Opponent, Line Score, ATS, O/U. Rows include games against Michigan, Maryland, Illinois, Iowa, Purdue, Wisconsin, Northwestern, Nebraska.

Mississippi St (SU: 1-3, ATS: 1-3, O/U: 1-3)

Table with columns: Date, Opponent, Line Score, ATS, O/U. Rows include games against LSU, Arkansas, Kentucky, Texas A&M, Alabama, Vanderbilt, Auburn, Georgia, Ole Miss, Missouri.

Missouri (SU: 2-2, ATS: 3-1, O/U: 2-2)

Table with columns: Date, Opponent, Line Score, ATS, O/U. Rows include games against Alabama, Tennessee, LSU, Kentucky, Florida, Georgia, South Carolina, Arkansas, Mississippi St, Vanderbilt.

Navy (SU: 3-3, ATS: 3-3, O/U: 4-1-1)

Table with columns: Date, Opponent, Line Score, ATS, O/U. Rows include games against BYU, Tulane, Air Force, Temple, East Carolina, Houston, SMU, Tulsa, Memphis, USF, Army.

NC State (SU: 4-2, ATS: 4-2, O/U: 5-1)

Table with columns: Date, Opponent, Line Score, ATS, O/U. Rows include games against Wake Forest, Virginia Tech, Pittsburgh, Virginia, Miami (FL), Florida State, Liberty, Syracuse, Georgia Tech.

Nebraska (SU: 0-1, ATS: 0-1, O/U: 0-1)

Table with columns: Date, Opponent, Line Score, ATS, O/U. Rows include games against Ohio State, Wisconsin, Northwestern, Penn State, Illinois, Iowa, Purdue, Minnesota, Wyoming-ot, UNLV, Utah State, New Mexico, San Diego State, Hawaii, Fresno State, San Jose State.

New Mexico (SU: 0-0, ATS: 0-0, O/U: 0-0)

Table with columns: Date, Opponent, Line Score, ATS, O/U. Rows include games against Colorado State, San Jose State, Hawaii, Nevada, Air Force, Utah State, Wyoming, Fresno State, San Jose State.

North Carolina (SU: 4-1, ATS: 3-2, O/U: 2-3)

Table with columns: Date, Opponent, Line Score, ATS, O/U. Rows include games against Syracuse, Charlotte, Boston College, Michigan, Florida State, NC State, Virginia, Duke, Wake Forest.

North Texas (SU: 2-3, ATS: 2-3, O/U: 4-1)

Table with columns: Date, Opponent, Line Score, ATS, O/U. Rows include games against Houston Baptist, SMU, Houston, Southern Miss, Charlotte, Middle Tenn, UTEP, Louisiana Tech, UAB, Rice, UTSA, Northern Illinois, Buffalo, Central Michigan, Ball State, Western Michigan, Toledo, Eastern Michigan.

Northwestern (SU: 1-0, ATS: 1-0, O/U: 0-1)

Table with columns: Date, Opponent, Line Score, ATS, O/U. Rows include games against Maryland, Nebraska, Notre Dame, Michigan State, Oklahoma, Tulsa, West Virginia, Kansas, Iowa State, Texas, Kansas State, Oklahoma, Texas Tech, TCU, Baylor, Florida, Kentucky-ot, Alabama, Arkansas, Auburn, Vanderbilt, South Carolina, Texas A&M, Mississippi State, LSU.

North Texas (SU: 2-3, ATS: 2-3, O/U: 4-1)

Table with columns: Date, Opponent, Line Score, ATS, O/U. Rows include games against Houston Baptist, SMU, Houston, Southern Miss, Charlotte, Middle Tenn, UTEP, Louisiana Tech, UAB, Rice, UTSA.

Northern Illinois (SU: 0-0, ATS: 0-0, O/U: 0-0)

Table with columns: Date, Opponent, Line Score, ATS, O/U. Rows include games against Buffalo, Central Michigan, Ball State, Western Michigan, Toledo, Eastern Michigan.

Notre Dame (SU: 5-0, ATS: 2-3, O/U: 3-2)

Table with columns: Date, Opponent, Line Score, ATS, O/U. Rows include games against Duke, USF, Florida State, Louisville, Pittsburgh, Georgia Tech, Clemson, Boston College, North Carolina, Syracuse, Wake Forest.

Ohio (SU: 0-0, ATS: 0-0, O/U: 0-0)

Table with columns: Date, Opponent, Line Score, ATS, O/U. Rows include games against Central Michigan, Akron, Miami (OH), Bowling Green, Buffalo, Kent State, Nebraska, Penn State, Rutgers, Maryland, Indiana, Illinois, Michigan State, Michigan.

Ohio State (SU: 1-0, ATS: 1-0, O/U: 0-1)

Table with columns: Date, Opponent, Line Score, ATS, O/U. Rows include games against Nebraska, Penn State, Rutgers, Maryland, Indiana, Illinois, Michigan State, Michigan, Oklahoma, Missouri State, Kansas State, Iowa State, Texas-4ot, TCU, Texas Tech, Kansas, Oklahoma State, West Virginia, Kansas, Iowa State, Texas, Kansas State, Oklahoma, Texas Tech, TCU, Baylor.

Oklahoma (SU: 3-2, ATS: 2-3, O/U: 3-2)

Table with columns: Date, Opponent, Line Score, ATS, O/U. Rows include games against Missouri State, Kansas State, Iowa State, Texas-4ot, TCU, Texas Tech, Kansas, Oklahoma State, West Virginia, Baylor.

Oklahoma St (SU: 4-0, ATS: 3-1, O/U: 1-3)

Table with columns: Date, Opponent, Line Score, ATS, O/U. Rows include games against Tulsa, West Virginia, Kansas, Iowa State, Texas, Kansas State, Oklahoma, Texas Tech, TCU, Baylor.

Ole Miss (SU: 1-4, ATS: 2-3, O/U: 3-2)

Table with columns: Date, Opponent, Line Score, ATS, O/U. Rows include games against Florida, Kentucky-ot, Alabama, Arkansas, Auburn, Vanderbilt, South Carolina, Texas A&M, Mississippi State, LSU.

Oregon (SU: 0-0, ATS: 0-0, O/U: 0-0)

Table with columns: Date, Opponent, Line Score, ATS, O/U. Rows include games against Stanford, Washington State, UCLA, Oregon State, California, Washington.

Oregon State (SU: 0-0, ATS: 0-0, O/U: 0-0)

Table with columns: Date, Opponent, Line Score, ATS, O/U. Rows include games against Washington State, Washington, California, Oregon, Utah, Stanford.

Penn State (SU: 0-1, ATS: 0-1, O/U: 1-0)

Table with columns: Date, Opponent, Line Score, ATS, O/U. Rows include games against Indiana-ot, Ohio State, Maryland, Nebraska, Michigan, Rutgers, Michigan State.

Pittsburgh (SU: 3-4, ATS: 0-5-1, O/U: 4-2)

Table with columns: Date, Opponent, Line Score, ATS, O/U. Rows include games against Austin Peay, Syracuse, Louisville, NC State, Boston Coll-ot, Miami (FL), Notre Dame, Florida State, Georgia Tech, Virginia Tech, Clemson.

Purdue (SU: 1-0, ATS: 1-0, O/U: 0-1)

Table with columns: Date, Opponent, Line Score, ATS, O/U. Rows include games against Iowa, Illinois, Wisconsin, North-western, Minnesota, Rutgers, Nebraska, Indiana.

Rice (SU: 0-1, ATS: 0-1, O/U: 1-0)

Table with columns: Date, Opponent, Line Score, ATS, O/U. Rows include games against Marshall, UAB, Middle Tenn-2ot, Southern Miss, UTSA, Louisiana Tech, North Texas, UTEP.

Rutgers (SU: 1-0, ATS: 1-0, O/U: 1-0)

Table with columns: Date, Opponent, Line Score, ATS, O/U. Rows include games against Michigan St, Indiana, Ohio State, Illinois, Michigan, Purdue, Penn State, Maryland.

San Diego State (SU: 1-0, ATS: 1-0, O/U: 0-1)

Table with columns: Date, Opponent, Line Score, ATS, O/U. Rows include games against UNLV, Utah State, San Jose State, Hawaii, Nevada, Fresno State, Colorado State, BYU.

San Jose State (SU: 1-0, ATS: 1-0, O/U: 0-1)

Table with columns: Date, Opponent, Line Score, ATS, O/U. Rows include games against Air Force, New Mexico, UNLV, Fresno State, Boise State, Hawaii, Nevada.

SMU (SU: 5-1, ATS: 3-3, O/U: 3-3)

Table with columns: Date, Opponent, Line Score, ATS, O/U. Rows include games against Texas State, North Texas, Stephen F. Austin, Memphis, Tulane-ot, Cincinnati, Navy, Temple, Tulsa, Houston, East Carolina.

