

Rabbit Anti-PR [MD8R]: RM0264

Intended Use: For Research Use Only

Description: The human progesterone receptor (PR), is a ligand-activated transcription factor and is a member of the steroid receptor family. PR exists in humans as two isoforms. PR is predominantly expressed in female sex steroid responsive tissues such as the mammary gland, uterus and ovary, but is also found in other tissues such as prostate stromal cells, anterior pituitary gland, and endocrine cells of the Langerhans' islets.

Specifications

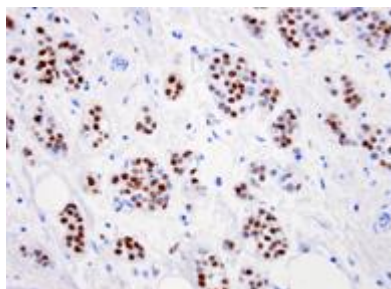
Clone: MD8R
Source: Rabbit
Isotype: IgG
Reactivity: Human
Localization: Nucleus
Formulation: Tissue culture supernatant in PBS pH7.5, containing 0.2% BSA, 15mM sodium azide (NaN₃)
Storage: Store at 2°- 8°C. For longer periods of storage, store at -20°C. Avoid repeat freeze-thaw cycles
Applications: IHC
Package:

Description	Catalog No.	Size
PR Concentrated	RM0264	1 ml

IHC Procedure*

Positive Control Tissue: Breast cancer
Concentrated Dilution: 200-300
Pretreatment: Citrate pH6.0, 15 minutes using Pressure Cooker, or 30-60 minutes using water bath at 95°-99°C
Incubation Time and Temp: 30-60 minutes @ RT
Detection: Refer to the detection system manual

* Result should be confirmed by an established diagnostic procedure.



Human FFPE breast carcinoma stained with anti-PR using DAB