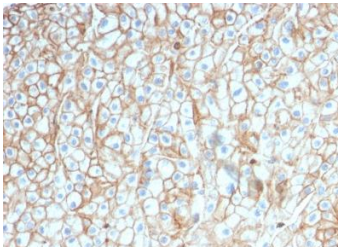


Medaysis

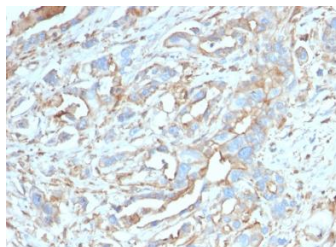
PD-L1 Monoclonal Antibodies



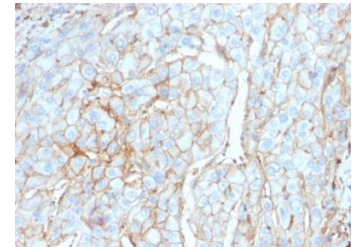
Programmed cell death 1 ligand 1 (PD-L1) also known as CD274 or B7-H1, a member of the B7 family of cell surface ligands, involved in regulation of T cell activation and humoral immune responses. PD-L1 is expressed in activated T and B cells, placenta and some tumors including melanoma, diffused large B-cell lymphoma, lung, ovary, colon, breast, rectum and renal cell carcinomas. When bound to its ligands, PD-1, it plays an immunosuppressive role by inhibiting T-cell activity. Overexpression of PD-L1 by cancer cells may enable them to evade the host immune response, conferring a growth advantage to such tumors.



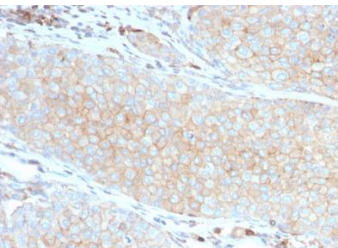
FFPE human lung SCC stained with anti-PD-L1 [PDL1/2746]



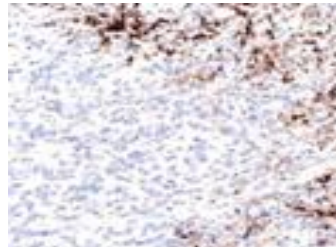
FFPE human breast ca. stained with anti-PD-L1 [PDL1/2746]



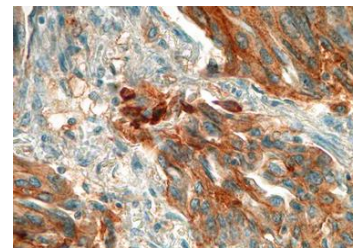
FFPE human cervical ca. stained with anti-PD-L1 [PDL1/2746]



FFPE human lung adenoca stained with anti-PD-L1 [PDL1/2746]



FFPE human lung melanoma stained with anti-PD-L1 [MD21R]



FFPE human lung SqCC stained with anti-PD-L1 [MD21R]

PD-L1 [MD21R]
PD-L1 [PDL1/2746]

Cat. No.: RM0324
Cat. No.: MC0300

Research Use Only
Research Use Only