



Volume 1, Issue 1

Fall/Winter 2013

Inside this issue:

<i>Economic Development</i>	1
<i>Newark Real Estate Market</i>	2
<i>Snowman Building Contest</i>	2
<i>Bushels of Apples</i>	2
<i>New Businesses in Newark</i>	3
<i>Tourism</i>	3
<i>Light up the Community</i>	4
<i>Newark... For All Seasons</i>	4

New Website Promotes the Village

<https://villageofnewark.com>

The Village of Newark's web site has a new look! The web site will help assist the Village Board to communicate with the community and, in turn offers citizens a way to communicate with the Board. To help facilitate this, we have included several links to Village Departments, Village information, Ordinances, Community Events, and information about Local Businesses. We hope you will find this new web site informative and helpful in communicating with the Village of Newark.

Newark Economic Development News



Newark... Growing Business

Often we are asked what is economic development and how do you measure its successes. Wikipedia defines economic development as the sustained concerted actions of policy makers and communities that promote the standard of living and economic health of a specific area.

The Village Board along with such groups as the Village of Newark Economic Development Alliance (VONEDA), the Chamber of Commerce, and the Wayne County Industrial Development Agency are working to strengthen the Village's economic development efforts.

In 2013 the Village of Newark was fortunate enough as a community to see significant large scale development such as two (2) new dialysis facilities, renovation and an addition to the Arcadia Shopping Center, a new daycare facility, a new state of the art emergency room at Newark Wayne Community Hospital, along with major investments in machinery and property at IEC. There were also significant renovations to

Mike Barnard's car dealership and to the new location of Salvatore's Pizzeria.

As a community we continue to see new and existing small businesses utilizing vacant commercial space to grow their companies. Many businesses and property owners have chosen to invest in their current locations, such as Mane Attraction, Chez Suzette and Nana's Restaurant. While businesses such as V Technical Textiles, Finewood Enterprises and Refuel fitness facility have decided to come and be part of the community.

As 2013 winds down and we look forward to 2014 we are very optimistic during these somewhat difficult economic times. We continue to receive calls from interested companies wanting to be part of the Village of Newark. It is through the continued efforts of each resident, business owner, and community group whereby we will see sustained economic development growth. Please feel free to contact our office at 331-4773 ext. 106 to further discuss economic development in the Village of Newark and what we may be able to do to

further improve the business environment in the Village of Newark.

Sincerely,
Mark A Peake
Village of Newark
Economic Development Facilitator

The Village of Newark Economic Development Alliance (VONEDA) is an advisory group comprised of local business leaders. The Alliance works with the Village of Newark and Chamber of Commerce to stimulate economic growth, promote Village assets, preserve the Village's history and encourage a diversity of uses to serve residents, businesses and visitors. V O N E D A m a k e s recommendations to the Village Trustees on economic development issues and strategic initiatives. Alliance members identify and recruit new industry and businesses seeking to start-up, relocate or expand in Newark while offering expertise in the retention of existing industry, thus ensuring that the local climate is functional for business enterprise. The Alliance reviews existing programs and offers support on new programs that stimulate the Village's economy and quality of life.

Newark Real Estate Market

The real estate market in the US has been an interesting economic force for the last several years with the market flying high in many regions around the US back in 2006. Most of those regions experienced the largest decrease in value in decades, in 2008. Many regions around the US have been trying to climb back up but had not reached the price levels seen back in early 2006.

Newark did not ride the wave with double-digit appreciation during the years of 2000 to 2006 like many regions of the country experienced. Newark was seeing single digit appreciation and a steady real estate market. Since Newark did not experience a huge

upswing, it did not see a huge plummet in prices, but did see a decrease of about 10% in 2008. Since then the market has reverted back to our stable single digit appreciation. Since that time mortgage rates have



continued to be at record low levels and Newark continues to have a steady real estate market.

More specifically in the Newark School District we saw over 100 residential sales in

2012 and are currently on pace to surpass that figure for 2013 closings. To the date the average sales price is \$96,057 a \$1.3% increase from the 2012 average sales price. We are seeing a steady demand for large vacant farmland parcels and strong demand for commercial real estate.

In 2013 there has been three times the number of closed commercial transactions compared to 2012. Some of sales resulted in new businesses moving to Newark and others were simply investors feeling confident in the Newark economy and investing in the Newark community. Many of the local commercial rental units were also filled during the second half of this year.

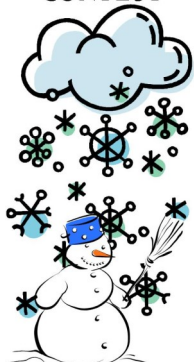
Many of these rentals were used to establish new business, businesses looking for more visibility, or for businesses that needed space to expand. A strong commercial market is always a good sign for a community and is a leading indicator of the health of a community's economy. Newark continues to be a wonderful community to work in and raise a family. Home buyers can find a nice home at a comfortable, fair price and have a stable investment for their future.

Submitted by

David Doebler
Doebler Realty Inc.
614 S. Main St., Newark
315-331-7070

Snowman Building Contest

The Village of Newark will Celebrate this Winter with a **SNOWMAN BUILDING CONTEST**



Judging will take place on Saturday, December 28th
In case of no snow in December the contest will be held Saturday, January 18th

The Village of Newark will celebrate this winter with a Snowman Building Contest. Snowman Enthusiasts...Winter is here so let's play! Gather your family and friends to show your snowman building skills. Judging will take place on Saturday, December 28th. In case of no snow in December the contest will be held Saturday, January 18th.

Rules: Entry must be located in the Village of Newark. Build a snowman, sculpture or whatever you like, it's up to you. Snow creation must be suitable for all audiences.

Residential entries must be located on property's front lawn area in clear view from the road and may not block sidewalks or driveways. Business entries must be located in front of the business on lawn area, or on sidewalk (no more than 3ft. from building), and may not block sidewalk or building entrance. Only food coloring can be used to color entry. No wood or metal framework can be incorporated in the structure of the snow sculpture. Sculptures should be of a non-interactive nature (this means no areas are

intended for people to walk on, crawl, stand, sit under or climb.)

To Enter or for more information,

call 315-331-4770 ext. 108 by Friday, December 20th.

***Best Business Entry will receive the Snowman Trophy and Pizza.**

***Resident First Place \$100**

***Resident Second Place \$50**

2013 New Businesses and Major Renovation Projects

- Herb Philipson's
- Refuel
- Metro Mattress
- Newark-Wayne Dialysis
- Mike Barnard Chevrolet
- Newark Wayne Community Hospital's New Emergency Room
- Candy Apple Pre-School and Early Childhood Learning Center
- V Technical Textiles
- IEC Electronics
- Finewood Enterprises
- John A. Greene & Associates
- Zoom Tan
- Sally Beauty Supply
- Nana's Restaurant
- Tolleson's Pizza
- Fresenius Medical Care
- Salvatore's Pizzeria
- Clock Works Games and Comics
- S & S Pickers
- C & J
- Filetti Furniture
- Terry's Treasures & More
- Super Gen Products
- Reed Eye Center



Reed Eye Center

Bushels of Apples

The apple harvest season will soon be coming to a close in New York State and growers are reporting a vintage crop according to the New York Apple Association, Inc. The state's nearly 700 apple growers are now expecting to pick about 32 million bushels by the time harvest concludes, a modern record. New York is the second largest apple

producing state in the United States. Excellent weather conditions—beginning during this year's bloom and growing season, and continuing into harvest have for Wayne County Farmers.

"The weather has been great for tree crops this year, while ground crops suffered due to a very wet growing season," said Gary Wells

Owner, The Apple Shed, 3391 Fairville Maple Ridge Rd., Newark. Farm markets across Wayne County are stocked with large and juicy apples and consumers will find more of the varieties that they love along with some new tasty new comers!

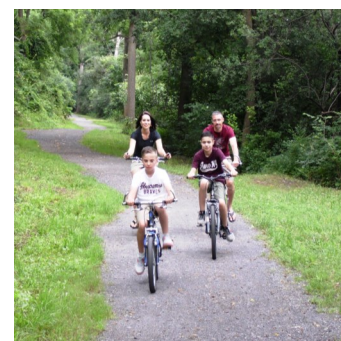


Tourism

Wayne County sees hundreds of bicycle tourists throughout the year. The Erie Canalway Trail along with the Seaway Trail are both well traveled. Wayne County has been chosen as one of four counties that will divide a \$6000 grant to create bike loop trails along the Erie Canal. Christine

Worth, Director of Tourism, is working with Harvey Botzman from the New York Bicycling Coalition who received the grant from the Erie Canalway Heritage Corridor Fund. The funds for this grant will be used to publish bike trail map guides. In October, Wayne County Tourism brought

together individuals that were interested in creating bike loop trails in Wayne County. Harvey Botzman, the project manager said, "the proposed bike loop trails have to reach the canal corridor. The loops will run north south or east west. The objective is to create loops which will travel through



local communities, farm markets, and other interesting destinations in the county."

The trail map will be completed by January 30, 2014.

Village Of Newark Monday—Friday

100 East Miller Street
Newark, New York 14513
(315) 331-4770

Stay connected and see more community events
calendar on the Village website.
www.villageofnewark.com



LIGHT UP THE COMMUNITY

**Join us in
lighting up our
Village this
Holiday Season!**

**We invite our Newark Merchants to
decorate the exterior of their business with
White Lights and make our community
shine for the holidays.**

Thanksgiving to the New Year

For more information contact
The Village of Newark Economic Development Alliance (VONEDA)
331-4770

Newark... For All Seasons



This past summer the Newark Chamber of Commerce unveiled the community banners that promote the four seasons in our community. The banners help to promote local business with the businesses names prominently displayed on the banners for residents and visitors to see.

The Greater Newark Chamber of Commerce was organized in October of 1924, and since that time has evolved into a true community organization. The main purpose of the organization has been to advance the civic, commercial, industrial and agricultural interests of the Village of Newark and the surrounding areas. To stimulate public sentiments for the protection of the general welfare

and prosperity of the Village of Newark and the Town of Arcadia, as well as Wayne County.

The Greater Newark Chamber of Commerce is located at

199 Van Buren Street in Newark.
315-331-2705

Email: support@newarknychamber.org

