

The May 2017 Newsletter Gardens Gate



Port St. Lucie
Botanical Gardens



NATIONAL PUBLIC GARDENS DAY CELEBRATION

A Celebration of the Nation's Public Gardens occurs each May and this year the celebration will occur on May 12th. National Public Gardens Day was created in 2008, with then partners Rain Bird, to drive local and national exposure to the importance of building vibrant, relevant gardens committed to community enrichment and environmental responsibility through community engagement, sustainable practices and conversation.



NATIONAL PUBLIC GARDENS DAY

This annual tradition of celebrating public gardens historically takes place on the Friday preceding Mother's Day weekend each year. The intent is to raise awareness of public gardens and the important role they play in their communities and on a global scale.

Many of the nation's public gardens mark the day with special events and activities for schools, families and thousands of visitors to explore and support their local public garden.

Continued on Pg 3

Contents

President's Message [Pg2](#)
Board & Committees [Pg2](#)
Video Of The Month [Pg2](#)
Garden Center Update [Pg5](#)
Gift Shop Update [Pg6](#)
Volunteer Spotlight [Pg7](#)

Out & About with The Gardens [Pg6](#)
Sponsor A Bonsai Garden Pedestal [Pg20](#)
May Calendar [Pg21](#)
2017 Plant Sale & How-To Series [Pg24](#)
Wacky Weeders [Pg27](#)
April Planting Calendar [Pg28](#)
Thank You Lowes & ThreeBestRated [Pg30](#)
River Nights at The Gardens [Pg31](#)
Events at The Gardens [Pg32](#)
How-To: Flower Arrangement [Pg33](#)

Reminder

RED, WHITE & BLUE PLANT SALE
SATURDAY • MAY 27TH
9:00AM - 1:00PM



2410 SE Westmoreland Blvd.
Port St. Lucie, FL 34952
Phone: 772.337.1959
Fax: 772.237.5952
E-mail: info@pslbotanicalgardens.org
Web: www.pslbg.org
Hours: Wednesday - Saturday 10am - 4pm
Sunday Noon - 4pm
Closed Monday, Tuesday & Holidays

Suggested Donations:
Adults \$5
Students \$2
Children 12 & Under Welcome
Members and Active Military
(with family) Welcome (IDs required)

Mission Statement . . .

Friends' mission is to create and maintain a beautiful, serene sanctuary in the center of Port St. Lucie that is environmentally sound and naturally diverse and to provide educational, cultural and recreational opportunities for all who visit.

Officers & Directors . . .

President: Joleen King
Vice President: Illona Christie
Secretary: Claire Clark
Treasurer: Cheri Mabry
Directors: Mike Alexander
Melinda Demarco
Brenda Gustafson
Gloria "Gigi" Norelli
Jeffrey Policar
Glenn Ryals
Tim Sutton

Standing Committee Chairs . . .

Election Committee: TBD
Finance Committee: Cheri Mabry
Gift Shop Committee: Mike Aleander
Horticulture Committee: Brenda Gustafson
Membership & Volunteer Committee: Illona Christie
Resource Development Committee: Claire Clark
Strategic Planning Committee: Glenn Ryals

Newsletter...

Editor: Judy Nash-Wade
Design: Mark Barnes

The Port St. Lucie Botanical Gardens is managed and operated by Friends of the Port St. Lucie Botanical Gardens, Inc. The Friends of the Port St. Lucie Botanical Gardens, Inc. receives no funding from any government agency. Your admission donations help us maintain and grow The Gardens.

PRESIDENT'S MESSAGE...

Volunteers are the heart and soul of our Botanical Gardens. Visitors express surprise that our Gardens are maintained and supported by a totally volunteer crew. The sense of "ownership" is palatable throughout the various departments and areas: the Garden Societies who maintain their areas, our Propagation team, busy 'potting up', shifting merchandise, interacting with the public as they ask about potential purchases. The Pavilion greeters and gift shop volunteers, who have the privilege of being the "first contact" for our visitors, take their responsibilities seriously. And of course, the elected Board of Directors whose responsibility is the long term guidance and day-to-day running of the Gardens.



And who are our visitors? While we certainly see our local PSL neighbors, we have had people walk through the doors from England, France, Canada, the West Indies, Wales, Italy, etc. Visitors arrive on a daily basis from Miami, Vero Beach, Tampa – all over the state.

If you haven't visited The Gardens lately, plan to stop by. Take a look around. I'm confident you'll be pleased. And say 'hello' to our volunteers!

Joleen King
President

VIDEO OF THE MONTH

RIVER NIGHTS
DRUM CIRCLE
PREVIEW

This year, the Port St. Lucie Botanical Gardens has partnered with the Port St. Lucie Parks and Recreation Department for a day full of education fun and an evening of enjoyment for the whole family.

The day will feature free admission to The Gardens, with the evening featuring River Nights from 5pm to 8pm. River Nights will include Classic Cars you can browse and an

exciting Drum Circle you can join and participate in. You can also paint rocks with PSL Rocks, enjoy the live music by the River as well as enjoy food, drinks or an adult beverage or two which will be available for sale.

Come join us and enjoy the fun as we celebrate National Public Gardens Day and River Nights at the Port St. Lucie Botanical Gardens, Friday, May 12, 2017.



NATIONAL PUBLIC GARDENS DAY

May 12, 2017

Join Us!

National Public Gardens Day is an annual celebration of the nation's public gardens to raise awareness of our important role in promoting environmental stewardship, plant and water conservation, green spaces, and education in communities nationwide.

Celebrate Mom this Mother's Day Weekend with a visit to your local public garden!

Butterfly GARDENING

If you Plant
They
will come!

**FREE
CLASSES**

Complete List Of
All Classes At
www.pindersnursery.com
Must Register Online



**Pinder's
Nursery**
Palm City, Florida



Monday-Saturday 9-5 • Sunday 10-4
Since 1975, Locally Owned & Operated
5500 SW Martin Hwy. Palm City

...growing flowers, food and friendships!

772-781-8085

Propagation Garden Center

at the Port St. Lucie Botanical Gardens

SPRING & SUMMER PLANT SALES

The Garden Center volunteers have been very busy preparing for our Spring & Summer plant sales with over 1000 plants to choose from. There are many variety of plants, including many different varieties of Coleus, Copper Leaf, Bromeliads, Penta's, and too many more to include. Stop in to Visit & Support the Gardens by purchasing a special plant or two or three for your garden. Don't forget that special plant for Mother's Day, Earth Day, Memorial Day & July 4th.



Most prices from \$1.00 to \$5.00

OPEN

Thursday, Friday, & Saturday
10AM - 1PM.

We have plants for every occasion!



**WE NEED
ONE GALLON POTS**

The Propagation Gardens Center is desperately in need of one gallon pots.

Our propagation expert, Ben Woodruff has been really busy propagating plants and we have over 1000 cuttings that when ready and rooted need gallon containers. Our budget is almost depleted. If you would like to donate one gallon pots or a monetary donation to the Garden Center, we would be so appreciative. Call Brenda at 772.337.1959.



The Gift Shop

at the Port St. Lucie Botanical Gardens



WE NOW CARRY LOVEPOP CARDS!!!





VOLUNTEER

SPOTLIGHT

Phyllis Brown...AKA the “Butterfly Lady”? – to some she sure is! Phyllis has been a volunteer in the Gardens “since the beginning” when it opened in 2010. Before starting in our Butterfly Garden, as a new Master Gardener, Phyllis volunteered in the Butterfly Garden at the Master Gardeners’ Butterfly Garden at the UF/IFAS Extension in Fort Pierce. She has since been involved with the design, purchasing, planting and of course maintaining our Butterfly Garden as it has developed and expanded over the years. She leads an active and friendly



**Volunteer: Phyllis Brown
AKA The Butterfly Lady**

group of volunteers who have collectively made the Butterfly Garden an enchanting and beautiful place to visit.

When asked what she likes about her experience with the Butterfly Garden, Phyllis had no hesitancy in answering: “watering and deadheading!”. More seriously she says she “loves it when the garden comes together – like now. It is the fruition of seven years of work. Spring has sprung!”

Out & About



With The Gardens

Rio Lindo Garden Club Blue Star Memorial Highway Marker

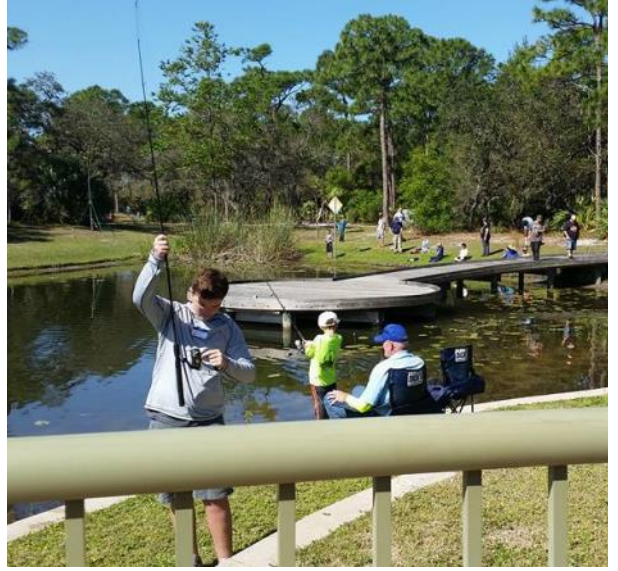


Blue Star Memorial Highway Marker sponsored by the Rio Lindo Garden Club on Veterans Memorial Highway

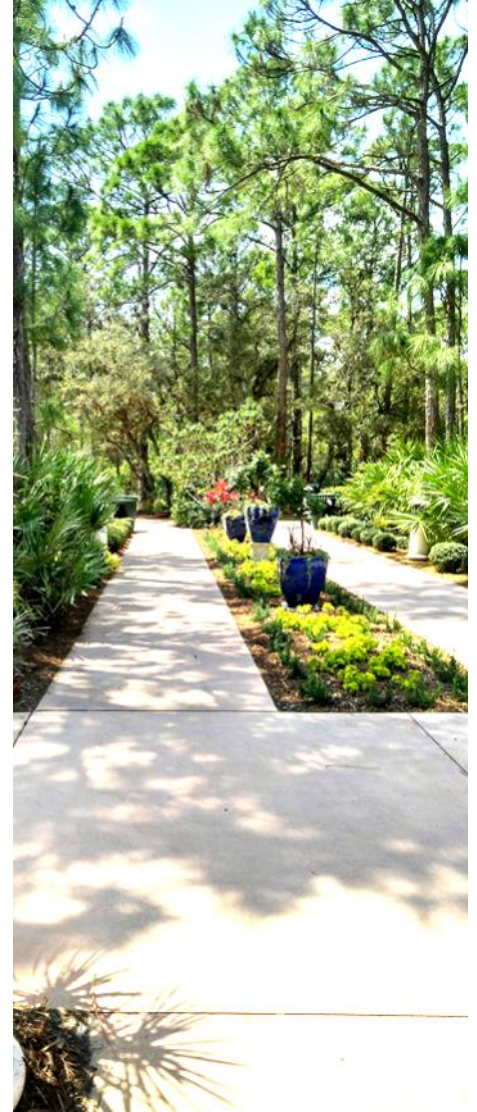


Joleen King presenting at the Blue Star Memorial Highway Marker Dedication

Port St. Lucie Angler's Club Kids Fishing Tournament



The Spring Promenade



EXPERIENCE COUNTS - AND SAVINGS ADD UP

Find out about the **Competitive Rates** and **Special Benefits** available through the AARP® Auto Insurance Program from The Hartford.

Ready to learn more? Contact our agency now:

POST INSURANCE



SEE HOW MUCH YOU COULD SAVE!
Call today for your **FREE, no-obligation quote:**

772-878-8184

POST INSURANCE

146 NW Central Park Plaza, Suite 102
Port St. Lucie, FL, 34986

info@insurewithpost.com
www.InsureWithPost.com



PSL Rocks Easter Rock Hunt







The Propagation Garden Center is Ready with Oodles of Plants.

Earth Day Ladybug Launch

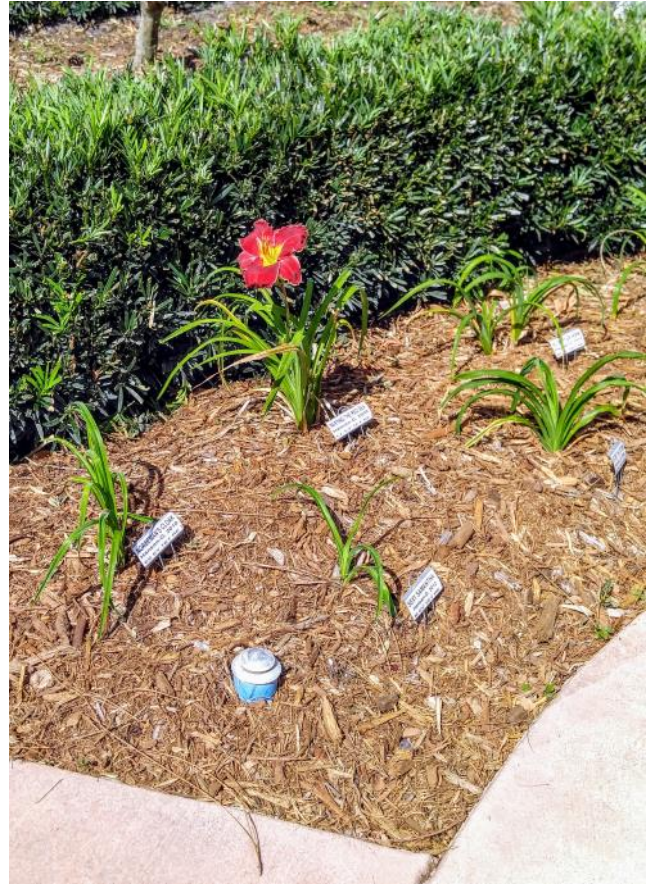




Resident Gopher Tortoise at The Gardens



Daylilies Popping Up!



In Bloom at The Gardens



**Picture Taken by
Betsy Alexander Stibal**



**Picture Taken by
Betsy Alexander Stibal**



**Picture Taken by
Ilona Berzups**



**See Me in the
Butterfly Garden**



Promenade Floral Design by Paul Renwick



Joleen King testing prospective Gift Shop Products



Melinda Demarco climbing high in the Gift Shop for Creativity



Pavilion dressed to impressed

Ben Woodruff teaching the High School Horticulture Club



High School Horticulture Club cleanup project

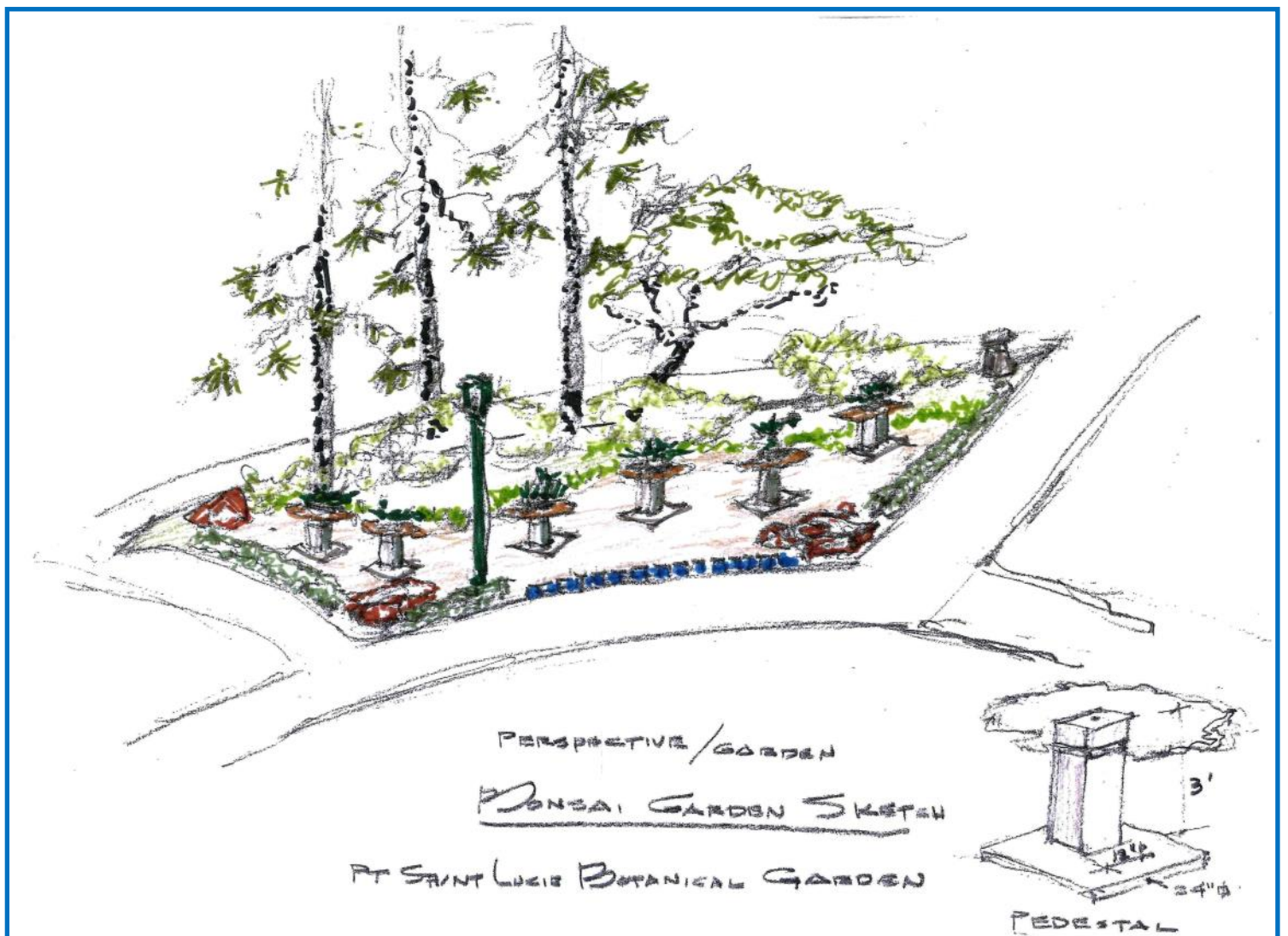
Sponsor a Pedestal in our new Bonsai Garden

The Port St. Lucie Botanical Gardens is in the process of finalizing the new Bonsai Garden which will be maintained by the Treasure Coast Bonsai Club.

We have the opportunity for up to six (6) sponsors to memorialize or honor a loved one with a Pedestal donation of \$300. Each donation will provide a sturdy bollard pedestal which will be anchored in the Bonsai Gardens and affixed with a 4x6 aluminum plaque engraved with your dedication.

This is a wonderful way to honor Mom's for Mother's day, Dad for Father's Day, someone special on their birthday or even a lasting memorial. A group or Club could split the cost to honor a past president or your top volunteer.

For more information or to make a donation, please contact Joleen King at 772-337-1959 or email at info@pslbotanicalgardens.org.





Calendar of Events

1 st	Horticulture Committee Meeting	11:15 am	All welcome
3 rd	Intermediate Spanish Classes	10:00 - 11:30 am	All Welcome
3 rd	German American Club Board Mtg.	2:00 - 4:00 pm	Members Welcome
3 rd	Ft Pierce Jazz & Blues Jazz Jams	6:30 - 9:30 pm	\$6 Donation, Members \$5
4 th	German American Chorus Rehearsal	2:00 - 4:00 pm	Members Only
8 th	FPSLBG Board Meeting	4:30 - 6:30 pm	Members Welcome
9 th	PSL Orchid Society Meeting	11:00 am - 3:00 pm	Members Welcome
10 th	Intermediate Spanish Classes	10:00 - 11:30 am	All Welcome
11 th	PSL Anglers Club Meeting	6:30 - 9:00 pm	All Welcome
12 th	American Public Gardens Association Day	All Day	All Welcome
12 th	River Nights at the Botanical Gardens	5:00 - 8:00 pm	All Welcome
13 th	Master Gardeners Plant Sale Ft. Pierce	9:00 am - 1:00 pm	All Welcome
16 th	Crosstown Chapel Mother's Day Service	8:00 am - 12 Noon	All Welcome
17 th	Intermediate Spanish Classes	10:00 - 11:30 am	All Welcome
17 th	Ft Pierce Jazz & Blues Jazz Jams	6:30 - 9:30 pm	\$6 Donation, Members \$5
18 th	German American Chorus Rehearsal	2:00 - 4:00 pm	Members Only
20 th	Wacky Weeders	8:00 am - 12 Noon	All Welcome
21 st	So. Florida Daylily Society Meeting	2:00 - 4:00 pm	Members Welcome
22 nd	Rio Lindo Garden Club Meeting	12:30 - 4:00 pm	Members Welcome
24 th	Intermediate Spanish Classes	10:00 - 11:30 am	All Welcome
27 th	Red, White & Blue Plant Sale	9:00 am - 1:00 pm	All Welcome
31 st	Intermediate Spanish Classes	10:00 - 11:30 am	All Welcome
31 st	Ft Pierce Jazz & Blues Jazz Jams	6:30 - 9:30 pm	\$6 Donation, Members \$5

Are you a Member of Friends? Friends Membership is...



Horticulture



Education



Preservation



Community



Become a Member of a Growing Community...
Friends of the Port St. Lucie Botanical Gardens, Inc.



**Click Here to
Join or Renew Your
Membership Today**



  "like" us on
facebook

**VISIT OUR
WEBSITE** 



Connect. Integrate. Simplify.

Technology for every workplace delivering advanced functionality, ease of use and peace of mind.

TOSHIBA
BUSINESS SOLUTIONS



Pleased to be in
your office

Proud to be in
your community

**THINK OF US AS YOUR OFFICE
SOLUTIONS PARTNER!**

**Toshiba Business Solutions
Proud To Sponsor
Friends of the
Port St. Lucie
Botanical Gardens**

It's not just a slogan; they're words we live by. Our local Toshiba team lives in this community just like you. Let us help you save as much as 40% on your document management needs.



To learn more please contact:

Daniel Pimpo
772-402-4878
daniel.pimpo@tbs.toshiba.com

Lets
grow
together





2017 Plant Sale Series



May 27, 2017

Red, White & Blue Plant Sale

June 24, 2017

Taste of the Tropics Plant Sale



July 29, 2017

Bromeliads & More Plant Sale

August 26, 2017

Orchids, Orchids & More Plant Sale



September 23, 2017

Herbs, Vegetables & More Plant Sale

December 16, 2017

Delights of December Plant Sale





Horticulture How-To Series:

UPCOMING PROGRAMS

Port St. Lucie Botanical Gardens

Presented In the Propagation Garden Center

May 27, 2017

Elegant, Exquisite, Easy Flower Arrangements by Paul Renwick

June 24, 2017

Growing Tropical Fruit Trees, one-two-three by Mike Luciano

September 23, 2017

Herbs - From the Garden to Your Tummy! – TBD

October 7, 2017

Scary Creepy Decorated Plants for Halloween – TBD

November 11, 2017

Make Your Own Thanksgiving Cornucopia– by Paul Renwick

December 9, 2017

Unique & Delightful Holiday Wreaths by Paul Renwick
(back by popular demand)



PORT ST. LUCIE

CIVIC CENTER

ELEGANT • FULL-SERVICE • EVENT FACILITY

9221 SE Civic Center Pl PSLCivicCenter@cityofpsl.com
Port St Lucie, FL 34952 www.cityofpsl.com/civic
772-807-4488



PORT ST. LUCIE
**PARKS &
RECREATION**



THE SAINTS

At Port St. Lucie Golf Course
www.CityofPSL.com/Golf

2601 SE Morningside Blvd. • (772) 398-2901
Port St. Lucie, FL 34952 • Fax: (772) 398-2778

Welcome to All Garden Goers...

This month our
Jazz Jams will be held on
**April 5th,
& April 19th**
starting at 6:30 pm

JAZZ JAMS

At The Gardens

Donation \$6 per person.
Gardens & Jazz Society
Members \$5 per person.

**Sponsored by the
Fort Pierce Jazz & Blues Society**

The 19th Hole at the Saints

Restaurant & Banquet Hall

772-337-0180

Carl Bussett/Rick Aslin
Proprietors

& Sandpiper Room

2601 SE Morningside Blvd.
Port St. Lucie, Fl. 34952



Mark A. Barnes

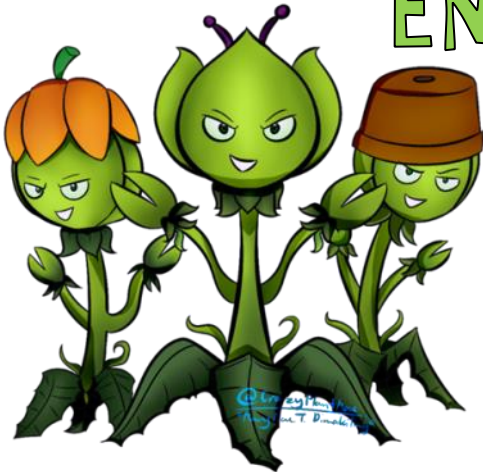
Making You & Your business Look Great

772.801.8800

Mark@MarkBarnesMusic.com

- Business Card Designs
- Logo Designs
- Graphic Designs
- Speciality Cards
- Real Estate Ads & Designs
- Video Home Tours
- Basic Web Sites
- Copyright Services
- ASCAP & Music Site Setup
- QR Code Design
- Video Bios and Resumes
- Power Point Presentations
- Virtual Assistant
- Real Estate Services

ENLIST: JOIN THE Saturday Wacky WeederS'



When: May 20, 2017
Where: PSL Botanical Gardens
Time: 8:00AM - 12:00PM

LUNCH Served

Earn Double volunteer hours (Core & School Students)

The Gardens need your help! The Weeds are still winning the war! And the vines are strategizing for a world take-over! We're making headway, but still need to show 'em who's boss. This is our last time before it get's too hot to continue sprucing up the Gardens for Spring & Summer events!



Join US For a FUN MORNING – ALL VOLUNTEERS INVITED

Consider yourself less than able-bodied? There are jobs for everyone, no matter age or ability. Bring gloves, clippers and any personal tools you prefer.

**GET
INVOLVED
VOLUNTEER**



Propagation
Garden Center
at the Port St. Lucie Botanical Gardens

If you enjoy gardening and want to learn more about propagating your Florida plants, increase your plant knowledge and other gardening techniques, then join our team at the Propagation Garden Center. We're there to work and learn together. We're a friendly group who would like you to join us even if it's for only a couple of hours a week. Call Brenda Gustafson at 772-678-8523 or visit us any Thursday, Friday or Saturday from 9:30AM to 12:00PM.

University of Florida IFAS Extension Central Florida Gardening Calendar — May

What to Plant

Annuals/Bedding plants: Plants that can take summer heat include coleus, salvia, torenia, wax begonia, and ornamental pepper. **See Annuals:** http://edis.ifas.ufl.edu/topic_annual_landscape_plants

Bulbs: Some lilies do better when their roots are crowded. Try planting Amazon, Aztec, and Clivia lilies in containers to increase blooming. **See Bulbs for Florida:** http://edis.ifas.ufl.edu/topic_bulbous_flowers

Herbs: Plant heat-loving herbs, including basil, Mexican tarragon, ginger, cumin, summer savory, and rosemary. **See Herbs:** http://edis.ifas.ufl.edu/topic_herbs

Vegetables: Sweet potatoes, boniato, hot peppers, and tropical “spinach” such as Sisso, Malabar, and New Zealand can be planted now. **See Vegetable Gardening in Florida:** http://edis.ifas.ufl.edu/topic_vegetable_gardening

What to Do

Pests: Watch for thrips, scale, and mites on ornamental plants because they become more active in warm weather. **See Landscape Pest Management:** http://edis.ifas.ufl.edu/topic_landscape_pests

Gardenias and ixora: Distinguish between the normal yellowing of older leaves and the yellowing of new growth, which usually indicates a micronutrient deficiency. **See Nutrient Deficiency (Landscape Plants):** http://edis.ifas.ufl.edu/topic_nutrient_deficiencies_landscape_plants and *Gardenias at a Glance:* <http://edis.ifas.ufl.edu/ep338>

Oleanders: Inspect chewed or ragged leaves for oleander caterpillars at work. **See Oleander Pest Management:** http://edis.ifas.ufl.edu/topic_oleander_ipm

Lawns: Watch for damage from chinch bugs in St. Augustinegrass and begin scouting for newly hatched mole crickets in bahiagrass lawns. **See Turfgrass Pest Insects:** http://edis.ifas.ufl.edu/topic_turf_pest_insects

Tomatoes: Watch for pests, disease, and nutritional disorders on tomato plants. **See Home Tomato Gardening:** http://edis.ifas.ufl.edu/topic_tomato_gardening

Trees: Prepare for hurricane season by checking trees for damaged or weak branches and prune if needed. Hire an ISA-certified arborist. **See International Society of Arboriculture:** <http://isa-arbor.com/> and *Pruning Landscape Trees and Shrubs:* http://edis.ifas.ufl.edu/topic_tree_pruning

Lawns: Prevent or minimize disease by following proper cultural practices when caring for lawns. **See Turf Diseases:** http://edis.ifas.ufl.edu/topic_turf_diseases

WHAT'S FLOWERING in Florida?

MAY

**NORTH/
CENTRAL**

-  **Hibiscus***
Native and non-native, evergreen (*Hibiscus spp.*)
-  **Southern Magnolia**
Native, evergreen (*Magnolia grandiflora*)
-  **Oleander**
Non-native, evergreen (*Nerium oleander*)
-  **Gardenia**
Non-native, evergreen (*Gardenia jasminoides*)
-  **African Iris**
Non-native, herbaceous (*Diets vegeta*)

* In both North and South.

SOUTH

-  **Hibiscus***
-  **Bougainvillea**
Non-native, evergreen (*Bougainvillea spp.*)
-  **Royal Poinciana**
Non-native, semi-evergreen (*Delonix regia*)
-  **Frangipani**
Non-native, deciduous (*Plumeria rubra*)
-  **Yesterday-Today-and-Tomorrow**
Non-native, evergreen (*Brunfelsia grandiflora*)




UF IFAS Extension
UNIVERSITY of FLORIDA



Gardening SOLUTIONS

For more information, please visit
GardeningSolutions.ifas.ufl.edu

EDIBLES TO PLANT IN MAY

	North	Central	South
 Survives Transplanting	Eggplant, Sweet Potatoes	Sweet Potatoes	Sweet Potatoes
 Transplant With Care	Mustard		
 Use Seeds	Beans (lima) Okra Peas (Southern)	Okra Peas (Southern)	



UF IFAS Extension
UNIVERSITY of FLORIDA



Gardening SOLUTIONS

For more information, please visit
GardeningSolutions.ifas.ufl.edu

THANK YOU LOWES

A BIG Thank You to Lowe's in Jensen Beach, Florida.

Lowe's Garden Center has been very supportive of the Port St. Lucie Botanical Gardens and our garden needs. Manager, Sherry Heveion, takes time to answer questions, show us the latest and best plants and assist with our purchasing requirements. She has a great support team with Jill and Trevor. It's always an excellent experience shopping at Lowe's.

Thanks for being a great community partner.



THREEBESTRATED.COM SELECTS THE GARDENS

The Port St. Lucie Botanical Gardens was chosen as one of the Top 3 Places To See in Port St. Lucie. Together with the Treasure Coast Model Railroad Club and First Data Field (home of the Mets), The Gardens was given the distinctive honor to be handpicked for the Top 3 Places To See in Port St Lucie, FL.

Three Best Rated® was created with a simple goal to find folks looking for the best, the top 3 local businesses, professionals, restaurants, health care providers and places to see in any city. Their employees Handpick top 3 local businesses, checking business's reviews, history, complaints, ratings, satisfaction, trust, cost, general excellence, reputation using a 50-Point Inspection. They display only businesses that are verified by their employees. Their website is updated on a regular basis for quality and latest business information.

A promotional poster for "Jazz Jams at The Gardens". The background is dark with a vibrant, fiery image of a saxophone. The text is in a bold, distressed blue font. The event is presented by the Port St. Lucie Jazz & Blues Society.

JAZZ JAMS
AT THE GARDENS 

Wednesday
May 3rd, 17th & 31st
6:30 - 9:30 pm

Presented By


River Nights

12
MAY

At the Port St. Lucie Botanical Gardens

5:00 - 8:00 pm



Friends of the Port St. Lucie Botanical Gardens in cooperation with the City of Port St. Lucie Parks & Recreation Department present River Nights at the Port St. Lucie Botanical Gardens

Relax, recharge, enjoy a tranquil evening among nature and enjoy the fire.

- Browse the Classic Cars
- Join the Drum Circle
- Enjoy Live Music



- Paint Rocks with PSL Rocks
- Cash Bar & Food will be available for Purchase

This event is held in partnership with APGA National Public Gardens Day

PORT ST. LUCIE BOTANICAL GARDENS • WWW.PSLBG.ORG
2410 SE WESTMORELAND BLVD., PORT ST. LUCIE, FL 34952



NATIONAL PUBLIC GARDENS DAY



May 12th, 2016

National Public Gardens Day is Friday May 12, 2017 and our Port St. Lucie Botanical Gardens will be celebrating. On this day, Public Gardens across the United States have special activities to celebrate their existence. Admission is Free. We hope you will join us, tour The Gardens and get advice from the Experts. Our Propagation area will have beautiful plants on sale for you to take home as well as our gift shop will entice you with a selection of hand picked Garden related crafts and jewelry. We look forward to seeing you there.



Red, White & Blue Plant Sale

Come join us for our NEW Red, White & Blue Plant Sale. We have many propagated plants from The Gardens' Propagation Gardens Center as well as from numerous Vendors who are sure to delight with their beautiful plants, arrangements and more.

It's also a good time to purchase an annual membership for yourself or as a gift. Membership to The Gardens offers exclusive members only benefits and much more. While at The Gardens, be sure to check out the special gifts and other garden surprises waiting for you in our lovely gift shop located inside The Pavilion.

Saturday • May 27, 2017

9 am to 1 pm



Port St. Lucie Botanical Gardens
2410 SE Westmoreland Blvd.
Port St. Lucie, FL 34952
www.PSLBG.org • 772.337.1959

Horticulture How-To Series: **Eloquent, Exquisite, Edible & Easy Flower Arrangements**

Port St. Lucie Botanical Gardens

Saturday • May 27, 2017

9:00 - 10:30 am

In The Propagation Garden Center



If you have enjoyed the flower arrangements that have been displayed in our pavilion, then this is a 'don't miss workshop'. Paul Renwick, a floral designer, not only does the weekly flower displays at the Gardens, but is responsible for the Seasonal Walkway and Co-Chairs the Propagation/Garden Center. Paul was the owner of a Floral Design Shop in California for 35 years as well as was a designer and event planner for many of the Hollywood stars.

Paul will demonstrate three very different flower arrangements and how you can easily use available plants at home to make a stunning arrangement for your table or garden. You will have a chance to purchase one of these displays for your home. Don't miss this great workshop.



This workshop will be held in conjunction with the

RED, WHITE & BLUE PLANT SALE

Cost: FPSLBG Members - Free • Non-Members - \$20.00

Become a Friends of the Port St. Lucie Botanical Gardens
Member attend the event **FREE!!**

CLICK HERE TO REGISTER



Got Junk In Your Trunk?

sell it at the

GARDENS COMMUNITY TRUNK SALE

Saturday • June 10, 2017 • 8am - 1pm

Looking to get rid of that extra stuff cluttering your home, garage, or storage area? Then join us at the Gardens Community Trunk Sale. Your accepted contract entitles you to 2 parking spaces in the sales area 18x18 feet. One space is for your vehicle (load it up - trailers welcome) and the 2nd for your sales area (tent, tables, whatever).

- Space is limited - Contracted Vendors, accepted by the committee, only.
- No Day-of, walk up vendors will be allowed.
- Arrive late, you'll be sent home. All vehicles must be in place before sales open at 8am. No Exceptions!

Contracts must be received by committee by June 5, 2017

Carry in, carry out policy. Didn't sell everything? All unsold merchandise Must be removed and taken with you: not left, donated or put in our dumpster.



PORT ST. LUCIE BOTANICAL GARDENS
2410 SE WESTMORELAND BLVD.
PORT ST. LUCIE, FL 34952
772-337-1959 • WWW.PSLBG.ORG

