



**STROMMEN**  
RANCH

ANGUS BULLS BACKED BY  
**MATERNAL POWER™**

Selling 100 Yearling & 2-Year-Old Angus Bulls  
**Feb. 17, 2024 • 3 p.m.**  
At the Ranch, Solen, ND



We are **COMMITTED** to raising the type of Angus seedstock that will have a **LASTING, POSITIVE IMPACT** *on your bottom line.*



**PROVEN, BALANCED  
COW-MAKERS**  
Our cattle are backed by generations of proven, efficient genetics, emphasizing calving ease, fleshing ability, productivity, udder & foot quality, disposition, structure and fertility.



# MATERNAL POWER™ ANGUS BULL SALE

AT THE RANCH · FEB 17, 2024 · 3 P.M. · SOLEN, ND

## SALE DAY PHONES

Aaron's Cell.....(701) 290-7983  
Sheyna's Cell.....(701) 290-3886  
Kayla's Cell.....(612) 723-9776

## SALE STAFF

Kyle Shobe, Auctioneer.....(406) 366-0472  
Kris Peterson.....(701) 339-0305  
Scott Ressler.....(701) 391-7310  
Todd Finke.....(701) 240-7711

**SALE ORDER** • We will follow consecutive sale book order.

**TERMS AND CONDITIONS** • All animals sell under the standard terms and conditions of the American Angus Association. Terms of the sale are cash. Full payment is due on sale day, unless prior arrangements have been made.

**BASE PRICE** • All bulls will have a minimum price of \$3,000 on sale day. Bidding will begin at the base price.

**BULL DEVELOPMENT** • These bulls have been handled correctly and developed without ANY creep. They have been fed just enough to express genetic differences, but not overfed as to compromise soundness or longevity. We want you to have a bull that will do his job and last for years. We believe our 90-day breeding season guarantee, detailed below, is among the best in the industry.

**EPDS** • EPDs are current as of Jan. 27, 2024.

**SALE TIME & LUNCH** • The sale starts at 3 p.m. CST. Please join us for lunch beginning at 1 p.m. and remain with us after the sale for fellowship and refreshments.

**FEEDING & DELIVERY** • We will keep all bulls free of charge until delivery. Deliveries start May 1st. We ask that you work with us so that we can deliver bulls in the most efficient manner. We offer free delivery within 500 miles of the ranch.

**HEALTH** • All bulls have been on a complete health program as prescribed by Dr. Pat Bierman of the Mandan Vet Clinic, Mandan, N.D. Bulls have been given a vaccination for foot rot and will be boosted when they are fertility tested.

**FERTILITY** • All bulls will pass a fertility exam performed by Dr. Bierman before delivery.

**SIGHT UNSEEN PURCHASES** • If you are unable to attend the sale, but wish to place a bid, feel free to call us and we will handle your bid as if you were here. If you wish to be on the phone during the sale, we will try to accommodate your request. Please let us know in advance so arrangements can be made. We have also partnered with DVAuction to offer online bidding and purchasing options. All sight unseen purchases are fully guaranteed.

**SIRE GROUPS** • For our customers who are looking to put together a set of closely related herd sires, we are offering many 1/2, 3/4 and full brothers.

**LIABILITY** • Anyone attending this sale does so at their own risk. Neither the owners nor anyone connected to this sale, assumes any liability, legal or otherwise.



**DIRECTIONS TO THE SALE** • From the city of Solen, ND, go North on Rice Street for 1 mile. Turn East on 70th Street (just before the cemetery at the crest of the hill) for 3 miles.

**DVAuction**  
Broadcasting Real-Time Auctions

We've partnered with DVAuction.  
See page 35 for details.

Videos of the bulls will be available on our website [www.StrommenRanch.com](http://www.StrommenRanch.com)

**GUARANTEE** • Strommen Ranch is very confident that we have developed these bulls safely. They have been fed just enough to express genetic differences, but not overfed as to compromise soundness or longevity. **We want you to have a bull that will do his job and last for years.** It is important to us that these bulls not only perform from birth to yearling, but from birth through breeding. It is with this confidence in our bulls that we can give our full 90-day breeding season guarantee. We understand that these are animals and that injuries do occur, but we have the utmost confidence that we have developed these bulls in the best way to protect your investment. If an injury or death occurs, Strommen Ranch will guarantee them for the purchase price minus salvage value (\$2,000), or we will provide a replacement bull, if a suitable bull is available.

We don't make you take out an insurance policy and add that to the purchase price. We don't have a formula to take away half of the value of the bull if injury occurs. At the same time, these are not 'disposable' bulls. We expect you to care for your investment in your Strommen Ranch bull, so that if a problem does occur, the most appropriate and timely care is taken. If the bull happens to get injured, or you are unsatisfied with your purchase for any reason, we want to know so we can take care of the issue in a timely manner. All injured bulls must be diagnosed by a veterinarian and any claims must be made by Sept. 15, 2024. **We are committed to our customers and your success.**

Catalog/ads/website by *Strommen Livestock Services* • Solen, ND • (701) 290-3886



# OUR 2024 SALE FEATURES SONS OF THESE **POWERFUL, PROVEN BULLS**



BC ROBUST 0807 • AAA 18456252  
CE +3 • BW +2.2 • WW +66 • YW +96 • MILK +9



SITZ STELLAR 726D • AAA 18397542  
CE +5 • BW -0.1 • WW +69 • YW +126 • MILK +18



BRUIN TORQUE 5261 • AAA 18248293  
CE +6 • BW +2.5 • WW +58 • YW +115 • MILK +25



S A V LANDMARK 9148 • AAA 19542356  
CE -3 • BW +3.2 • WW +84 • YW +142 • MILK +9



BASIN RAINMAKER 4404 • AAA 19932195  
CE +6 • BW +1.3 • WW +59 • YW +107 • MILK +35



S A V GLORY DAYS 1832 • AAA 20161297  
CE +0 • BW +5.2 • WW +75 • YW +134 • MILK +19





LOT 1 • S R STELLAR 342

LOT 1

## S R STELLAR 342

BD: 03/09/23

Reg #: 20845407

#Mohnen Substantial 272  
**Sitz Stellar 726D**  
 SITZ Pride 200B  
 S A V Rainfall 6846  
**S R Dorothy Ideal 144**  
 S R Dorothy Ideal 815

#Benfield Substance 8506  
 Mohnen Glyn Mawr Elba 1758  
 #Connealy Final Product  
 #Sitz Pride 308Y  
 #Coleman Charlo 0256  
 S A V Blackcap May 4136  
 #Soo Line Motive 9016  
 S R Dorothy Ideal 6112

Dam's Prod.	1/120
Calving Int.	1st calf
Udder	8
Docility	9

BW	Adj. 205	WWR	CE	BW	WW	YW	Milk
76	827	120	5	0.7	72	129	23

**Recommended for use on heifers.** Great Granddam in our Donor Pen WR 5/107. Excellent, wide-bodied bull here. All 3 females on the bottom side of his pedigree are very good.



S R Dorothy Ideal 6112 • Maternal Great Granddam of Lot 1

## BUILDING A *profitable cow herd* TAKES GENERATIONS.

It's not as easy as using a big-numbered bull that hopefully stands up to the maternal traits the EPDs say he has. **The proof is in the cow herd that remains.**



S R Dorothy Ideal 815 • Maternal Granddam of Lot 1



LOT 2 • S R ROBUST 366

LOT 2

**S R ROBUST 366**

BD: 03/11/23

Reg #: 20851323

BC Surveyor 680D  
**BC Robust 0807**  
 BC 327-8 CP Belle 0-807

#C C A Emblazon 702  
**S R Bonnie Belle 9106**  
 #S R Bonnie Belle 7131

#BC Eagle Eye 110-7  
 BC 2266 Prides Lass 4132 680  
 BC Pure Pride 327-8  
 BC 607 CP Belle MF 807  
 #O C C Emblazon 854E  
 Limestone Blackcap R128  
 #Sinclair Emulation XXP  
 #S R Bonnie Belle 104

Dam's Prod.	3/100
Calving Int.	350
Udder	10
Docility	10

BW	Adj. 205	WWR	CE	BW	WW	YW	Milk
86	728	104	7	1.1	63	102	15

Dam and Granddam have settled to AI service every year. Pathfinder Granddam WR 5/102. Pathfinder Great Grandam 4/116. One of the favorites all summer.



CCA Emblazon 702 • Maternal Grandsire of Lot 2



S R Polly 804  
 Dam of Lot 3

LOT 3

**S R ROBUST 333**

BD: 03/08/23

Reg #: 20851493

BC Surveyor 680D  
**BC Robust 0807**  
 BC 327-8 CP Belle 0-807

#Sitz Alliance 6595  
**S R Polly 804**  
 #SR Polly 323

#BC Eagle Eye 110-7  
 BC 2266 Prides Lass 4132 680  
 BC Pure Pride 327-8  
 BC 607 CP Belle MF 807  
 #Sitz Traveler 8180  
 #Sitz Barbaramere Jet 2698  
 #O C C Emblazon 854E  
 #M H Polly 817

Dam's Prod.	6/113
Calving Int.	352
Udder	10
Docility	10

BW	Adj. 205	WWR	CE	BW	WW	YW	Milk
78	658	ET	4	1.6	58	91	21

Donor Dam WR 6/113. Pathfinder Great Granddam.



LOT 3 • S R ROBUST 333





LOT 4 • S R ROBUST 336

**LOT 4**

**S R ROBUST 336**

BD: 03/08/23

Reg #: 20851467

BC Surveyor 680D  
**BC Robust 0807**  
 BC 327-8 CP Belle 0-807

#S A V Resource 1441

**S R Betty 613**

S R Betty 3208

#BC Eagle Eye 110-7  
 BC 2266 Prides Lass 4132 680  
 BC Pure Pride 327-8  
 BC 607 CP Belle MF 807  
 Rito 707 of Ideal 3407 7075  
 S A V Blackcap May 4136  
 #O C C Great Plains 943G  
 M H Betty 916

Dam's Prod.	6/102
Calving Int.	366
Udder	7.5
Docility	8

BW	Adj. 205	WWR	CE	BW	WW	YW	Milk
95	747	107	-1	3.5	66	108	16

Dam and Granddam have settled to AI service every year. Dam WR 6/102. Granddam WR 8/104. Great cow family.



S R Betty 3208 • Dam of Lot 5, Maternal Granddam of Lot 4

**LOT 5**

**S R ROBUST 3104**

BD: 03/14/23

Reg #: 20851477

BC Surveyor 680D  
**BC Robust 0807**  
 BC 327-8 CP Belle 0-807

#O C C Great Plains 943G

**S R Betty 3208**

M H Betty 916

#BC Eagle Eye 110-7  
 BC 2266 Prides Lass 4132 680  
 BC Pure Pride 327-8  
 BC 607 CP Belle MF 807  
 #N Bar Emulation EXT  
 Dixie Erica of C H 1019  
 #Papa Durabull 9805  
 V D A R Betty 23

Dam's Prod.	8/104
Calving Int.	365
Udder	7
Docility	8

BW	Adj. 205	WWR	CE	BW	WW	YW	Milk
99	673	ET	1	2.6	52	81	19

Dam has settled to AI service every year.



BC Robust 0807 • Sire of Lots 2-5 and 29-32



LOT 6 • S R TORQUE 3742

LOT 6

**S R TORQUE 3742**

BD: 03/28/23

Reg #: 20854062

#S A V 004 Density 4336  
**Bruin Torque 5261**  
Falcon Blackbird 6071

#S A V 8180 Traveler 004  
S A V May 7238  
#Connealy Dateline  
#Vermilion Blackbird 5044  
#GDAR Game Day 449  
DR Emma 1122  
#Mytty In Focus  
Reich Eliminator Erica 645

S R Game Day 359  
**Reich Eliminator Erica D240**  
Reich Eliminator Erica 0162

Dam's Prod.	6/105
Calving Int.	369
Udder	
Docility	

BW	Adj. 205	WWR	CE	BW	WW	YW	Milk
78	705	115	10	0.4	60	108	24

Recommended for use on heifers.

LOT 7

**S R TORQUE 3723**

BD: 03/25/23

Reg #: 20854053

#S A V 004 Density 4336  
**Bruin Torque 5261**  
Falcon Blackbird 6071

#S A V 8180 Traveler 004  
S A V May 7238  
#Connealy Dateline  
#Vermilion Blackbird 5044  
#O C C Emblazon 854E  
Limestone Blackcap R128  
#S A V Final Answer 0035  
Reich Rose 4202

#C C A Emblazon 702  
**Reich Rose F519**  
Reich Rose D009

Dam's Prod.	4/106
Calving Int.	368
Udder	
Docility	

BW	Adj. 205	WWR	CE	BW	WW	YW	Milk
86	662	108	10	1.1	56	105	25

LOT 8

**S R TORQUE 3747**

BD: 03/30/23

Reg #: 20855562

#S A V 004 Density 4336  
**Bruin Torque 5261**  
Falcon Blackbird 6071

#S A V 8180 Traveler 004  
S A V May 7238  
#Connealy Dateline  
#Vermilion Blackbird 5044  
#GDAR Game Day 449  
DR Emma 1122  
LT Right Time 7855 of EA  
Reich Malinda 423

S R Game Day 359  
**Reich Malinda 5306**  
#Reich Malinda 0238

Dam's Prod.	6/102
Calving Int.	369
Udder	
Docility	

BW	Adj. 205	WWR	CE	BW	WW	YW	Milk
96	682	111	1	4	66	121	25

Pathfinder Granddam WR 11/103. Great Granddam 6/104. Longevity and Fertility.



Strommen Ranch delivers! We truly enjoy visiting our customers at their ranches and seeing our genetics at work in their herds.



LOT 9 • S R TORQUE 3724

LOT 9

**S R TORQUE 3724**

BD: 03/26/23

Reg #: 20854054

#S A V 004 Density 4336  
**Bruin Torque 5261**  
 Falcon Blackbird 6071

#Basin Payweight 1682  
**Reich Enchantress 508**  
 Reich Enchantress 3257

#S A V 8180 Traveler 004  
 S A V May 7238  
 #Connealy Dateline  
 #Vermilion Blackbird 5044  
 #Basin Payweight 006S  
 21AR O Lass 7017  
 S R Paxton 128  
 Reich Enchantress 004

Dam's Prod.	7/105
Calving Int.	369
Udder	
Docility	

BW	Adj. 205	WWR	CE	BW	WW	YW	Milk
86	723	118	9	1	64	115	27



Basin Payweight 1682 • Maternal Grand sire of Lot 9

LOT 10

**S R TORQUE 3737**

BD: 03/28/23

Reg #: 20854059

#S A V 004 Density 4336  
**Bruin Torque 5261**  
 Falcon Blackbird 6071

#S A V Resource 1441  
**Reich Rachel D092**  
 #Reich Sara 273

#S A V 8180 Traveler 004  
 S A V May 7238  
 #Connealy Dateline  
 #Vermilion Blackbird 5044  
 Rito 707 of Ideal 3407 7075  
 S A V Blackcap May 4136  
 Reich Matrix 8113  
 Reich Sara 0196

Dam's Prod.	5/100
Calving Int.	368
Udder	
Docility	

BW	Adj. 205	WWR	CE	BW	WW	YW	Milk
80	618	101	9	0.7	52	98	23

Pathfinder Granddam WR 6/103.



LOT 10 • S R TORQUE 3737



**LOT 11 • S R SILVERADO 351**



**LOT 12 • S R SILVERADO 3716**

**LOT 11 S R SILVERADO 351**

BD: 03/09/23

Reg #: 20842682

S A V Rainfall 6846  
**S R Silverado 083**  
 #S R Dorothy Ideal 604  
 Bruin Torque 5261  
**S R Lady Blue 1103**  
 S R Lady Blue 665

#Coleman Charlo 0256  
 S A V Blackcap May 4136  
 #Connealy Capitalist 028  
 S R Dorothy Ideal 471  
 #S A V 004 Density 4336  
 Falcon Blackbird 6071  
 #S A V Resource 1441  
 #S R Lady Blue 203

Dam's Prod.	1/116
Calving Int.	1st calf
Udder	9.5
Docility	8

BW	Adj. 205	WWR	CE	BW	WW	YW	Milk
87	804	116	5	3	75	137	25

Dam and Granddam have settled to AI service every year.  
 Granddam WR 5/102. Great Granddam WR 5/104.

**LOT 12 S R SILVERADO 3716**

BD: 03/23/23

Reg #: 20854049

S A V Rainfall 6846  
**S R Silverado 083**  
 #S R Dorothy Ideal 604  
 #Connealy Reflection  
**V Reich Annie F540**  
 V Reich Annie D145

#Coleman Charlo 0256  
 S A V Blackcap May 4136  
 #Connealy Capitalist 028  
 S R Dorothy Ideal 471  
 #Bon View New Design 878  
 Happy Grill of Conanga 6260  
 Reich BC Pure Pride 477  
 #V Reich Annie 447

Dam's Prod.	4/107
Calving Int.	372
Udder	
Docility	

BW	Adj. 205	WWR	CE	BW	WW	YW	Milk
88	734	120	7	1.9	70	125	25

**LOT 13 S R SILVERADO 3738**

BD: 03/28/23

Reg #: 20854060

S A V Rainfall 6846  
**S R Silverado 083**  
 #S R Dorothy Ideal 604  
 #Connealy Reflection  
**Reich Annie F164**  
 Reich Annie 111

#Coleman Charlo 0256  
 S A V Blackcap May 4136  
 #Connealy Capitalist 028  
 S R Dorothy Ideal 471  
 #Bon View New Design 878  
 Happy Grill of Conanga 6260  
 #S A V Final Answer 0035  
 Reich Annie 9147

Dam's Prod.	4/109
Calving Int.	375
Udder	
Docility	

BW	Adj. 205	WWR	CE	BW	WW	YW	Milk
92	729	119	4	2.9	75	134	25

Granddam WR 7/99.



**LOT 14 • S R SILVERADO 3719**

**LOT 14**

**S R SILVERADO 3719**

BD: 03/24/23

Reg #: 20854050

S A V Rainfall 6846  
**S R Silverado 083**  
 #S R Dorothy Ideal 604  
 #Connealy Mentor 7374  
**Reich Forever Lady D130**  
 Reich Forever Lady 1180

#Coleman Charlo 0256  
 S A V Blackcap May 4136  
 #Connealy Capitalist 028  
 S R Dorothy Ideal 471  
 #G A R Retail Product  
 #Executa of Conanga 939  
 #LT Territory 5824 of EA  
 Reich Forever Lady 829

Dam's Prod.	5/107
Calving Int.	368
Udder	
Docility	

BW	Adj. 205	WWR	CE	BW	WW	YW	Milk
82	739	121	8	2.2	72	131	26

Granddam WR 5/103. Great Grandam 7/101.

**LOT 15**

**S R SILVERADO 3727**

BD: 03/26/23

Reg #: 20854055

S A V Rainfall 6846  
**S R Silverado 083**  
 #S R Dorothy Ideal 604  
 #Connealy Mentor 7374  
**Reich Blackcap D039**  
 Reich Blackcap 0199

#Coleman Charlo 0256  
 S A V Blackcap May 4136  
 #Connealy Capitalist 028  
 S R Dorothy Ideal 471  
 #G A R Retail Product  
 #Executa of Conanga 939  
 S A V Alliance 6850  
 #Leachman Blackcap 0121

Dam's Prod.	4/110
Calving Int.	369
Udder	
Docility	

BW	Adj. 205	WWR	CE	BW	WW	YW	Milk
84	649	106	8	1.8	57	105	25

**LOT 16**

**S R SILVERADO 3721**

BD: 03/25/23

Reg #: 20854051

S A V Rainfall 6846  
**S R Silverado 083**  
 #S R Dorothy Ideal 604  
 #Connealy Mentor 7374  
**Reich Enchantress 546**  
 Reich Enchantress 694

#Coleman Charlo 0256  
 S A V Blackcap May 4136  
 #Connealy Capitalist 028  
 S R Dorothy Ideal 471  
 #G A R Retail Product  
 #Executa of Conanga 939  
 #B C C Bushwacker 41-93  
 Reich Enchantress 948

Dam's Prod.	6/104
Calving Int.	366
Udder	
Docility	

BW	Adj. 205	WWR	CE	BW	WW	YW	Milk
84	698	114	7	1.7	61	111	25

**LOT 17**

**S R SILVERADO 3739**

BD: 03/28/23

Reg #: 20854061

S A V Rainfall 6846  
**S R Silverado 083**  
 #S R Dorothy Ideal 604  
 HF Rebel 53Y  
**#Reich Miss Rebel F205**  
 #Reich Miss Equal 0149

#Coleman Charlo 0256  
 S A V Blackcap May 4136  
 #Connealy Capitalist 028  
 S R Dorothy Ideal 471  
 #HF Tiger 5T  
 HF Tibbie 103T  
 #LT Territory 5824 of EA  
 Reich Miss Equal 7156

Dam's Prod.	4/107
Calving Int.	373
Udder	
Docility	

BW	Adj. 205	WWR	CE	BW	WW	YW	Milk
90	688	112	5	2.7	67	122	26

Granddam WR 8/104.

*Photos of the sale Lots and the vast majority of the support photos in this book were captured by us. We are far from being professional livestock photographers, and make no apologies for it. We enjoy giving you a realistic, jeans-and-boots representation of our cattle.*





LOT 18 • S R SILVERADO 3702



LT Bandwagon 3105 • Maternal Great Grand sire of Lots 18 and 19

We place **extensive pressure** on our cow herd and ourselves as breeders to generate the **RIGHT GENETICS** that will positively impact our customer's herds.

**LOT 18 S R SILVERADO 3702**

BD: 03/18/23 Reg #: 20854047

S A V Rainfall 6846  
**S R Silverado 083**  
 #S R Dorothy Ideal 604

Reich Bandwagon 906  
**Reich Jaynbee Alice 4113**  
 Jaynbee Alice 516P

#Coleman Charlo 0256  
 S A V Blackcap May 4136  
 #Connealy Capitalist 028  
 S R Dorothy Ideal 471  
 #L T Bandwagon 3105  
 Reich Malinda 775  
 Thomas Precision E161 2105  
 Jaynbee Alice 382

Dam's Prod.	8/101
Calving Int.	366
Udder	
Docility	

BW	Adj. 205	WWR	CE	BW	WW	YW	Milk
74	717	117	9	-0.3	60	102	27

Recommended for use on heifers. Granddam WR 12/105.

**LOT 19 S R SILVERADO 3733**

BD: 03/26/23 Reg #: 20854058

S A V Rainfall 6846  
**S R Silverado 083**  
 #S R Dorothy Ideal 604

Reich Bandwagon 906  
**Reich Lady 456**  
 Reich Lady 718

#Coleman Charlo 0256  
 S A V Blackcap May 4136  
 #Connealy Capitalist 028  
 S R Dorothy Ideal 471  
 #L T Bandwagon 3105  
 Reich Malinda 775  
 #B C Matrix 4132  
 Reich Lady 5121

Dam's Prod.	7/100
Calving Int.	430
Udder	
Docility	

BW	Adj. 205	WWR	CE	BW	WW	YW	Milk
90	662	108	5	2.1	61	108	25

Granddam WR 4/109.





**LOT 20 • S R STELLAR 332**

**LOT 20 S R STELLAR 332**  
 BD: 03/08/23 Reg #: 20845397

#Mohnen Substantial 272 <b>Sitz Stellar 726D</b> SITZ Pride 200B	#Benfield Substance 8506 Mohnen Glyn Mawr Elba 1758 #Connealy Final Product #Sitz Pride 308Y	Dam's Prod. 1/115
S A V Estocolmo 8331	#Coleman Charlo 0256	Calving Int. 1st calf
<b>S R Beauty 1158</b> S R Beauty 560	S A V Blackcap May 3501 #S A V Resource 1441 S R Beauty 706	Udder 8
		Docility 9

BW	Adj. 205	WWR	CE	BW	WW	YW	Milk
78	795	115	5	0.4	67	119	19

**Recommended for use on heifers.** Granddam has settled to AI service every year.

**LOT 22 S R STELLAR 310**  
 BD: 03/04/23 Reg #: 20845399

#Mohnen Substantial 272 <b>Sitz Stellar 726D</b> SITZ Pride 200B	#Benfield Substance 8506 Mohnen Glyn Mawr Elba 1758 #Connealy Final Product #Sitz Pride 308Y	Dam's Prod. 1/104
S A V Estocolmo 8331	#Coleman Charlo 0256	Calving Int. 1st calf
<b>S R Blackbird 1143</b> S R Blackbird 873	S A V Blackcap May 3501 #Sinclair Emulation XPP #S R Blackbird 531	Udder 8
		Docility 8

BW	Adj. 205	WWR	CE	BW	WW	YW	Milk
70	717	104	8	-1.2	60	107	19

**Recommended for use on heifers.** Dam has settled to her AI service every year.

**LOT 23 S R STELLAR 368**  
 BD: 03/11/23 Reg #: 20845429

#Mohnen Substantial 272 <b>Sitz Stellar 726D</b> SITZ Pride 200B	#Benfield Substance 8506 Mohnen Glyn Mawr Elba 1758 #Connealy Final Product #Sitz Pride 308Y	Dam's Prod. 4/98
#Sitz 4 Aces 4551	#Jauer 353 Traveler 589 27	Calving Int. 361
<b>S R Lady Blue 8116</b> S R Lady Blue 118	Sitz Pride 2561 #O C C Paxton 730P #S R Lady Blue 631	Udder 8.5
		Docility 8

BW	Adj. 205	WWR	CE	BW	WW	YW	Milk
72	697	100	8	-1.5	61	105	20

**Recommended for use on heifers.** Granddam WR 5/115. Pathfinder Great Granddam WR 7/106.



*S A V Estocolmo • Maternal Grand sire of Lots 20-22*

**LOT 21 S R STELLAR 302**  
 BD: 03/01/23 Reg #: 20845401

#Mohnen Substantial 272 <b>Sitz Stellar 726D</b> SITZ Pride 200B	#Benfield Substance 8506 Mohnen Glyn Mawr Elba 1758 #Connealy Final Product #Sitz Pride 308Y	Dam's Prod. 1/113
S A V Estocolmo 8331	#Coleman Charlo 0256	Calving Int. 1st calf
<b>S R Barbaramere Nell 1180</b> S R Barbaramere Nell 9111	S A V Blackcap May 3501 #S A V Raindance 6848 S R Barbaramere Nell 7155	Udder 8.5
		Docility 8

BW	Adj. 205	WWR	CE	BW	WW	YW	Milk
70	782	113	9	-0.8	68	121	21

**Recommended for use on heifers.**



*S R Lady Blue 118 • Maternal Granddam of Lot 23*



**LOT 23 • S R STELLAR 368**

LOT 24

## S R STELLAR 312

BD: 03/04/23

Reg #: 20845408

#Mohnen Substantial 272  
Sitz Stellar 726D  
SITZ Pride 200B

#Benfield Substance 8506  
Mohnen Glyn Mawr Elba 1758  
#Connealy Final Product  
#Sitz Pride 308Y  
#Coleman Charlo 0256  
S A V Blackcap May 4136  
#S A V Regard 4863  
S R Lady Blue 118

Dam's Prod.	1/113
Calving Int.	1st calf
Udder	9.5
Docility	9

S A V Rainfall 6846  
S R Lady Blue 149  
S R Lady Blue 841

BW	Adj. 205	WWR	CE	BW	WW	YW	Milk
72	782	113	6	-0.2	68	119	23

Recommended for use on heifers. Dam has settled to AI service every year.



S A V Rainfall 6846 • Maternal Grand sire of Lots 24-28

LOT 25

## S R STELLAR 313

BD: 03/04/23

Reg #: 20845413

#Mohnen Substantial 272  
Sitz Stellar 726D  
SITZ Pride 200B

#Benfield Substance 8506  
Mohnen Glyn Mawr Elba 1758  
#Connealy Final Product  
#Sitz Pride 308Y  
#Coleman Charlo 0256  
S A V Blackcap May 4136  
#Mohnen Substantial 272  
S R Clova Pride 732

Dam's Prod.	1/99
Calving Int.	1st calf
Udder	9
Docility	8

S A V Rainfall 6846  
S R Clova Pride 110  
S R Clova Pride 915

BW	Adj. 205	WWR	CE	BW	WW	YW	Milk
72	683	99	8	-0.8	61	112	20

Recommended for use on heifers. Dam has settled to AI service every year.

LOT 26

## S R STELLAR 369

BD: 03/11/23

Reg #: 20845411

#Mohnen Substantial 272  
Sitz Stellar 726D  
SITZ Pride 200B

#Benfield Substance 8506  
Mohnen Glyn Mawr Elba 1758  
#Connealy Final Product  
#Sitz Pride 308Y  
#Coleman Charlo 0256  
S A V Blackcap May 4136  
Bruin Torque 5261  
#S R Lucy 535

Dam's Prod.	1/113
Calving Int.	1st calf
Udder	9.5
Docility	10

S A V Rainfall 6846  
S R Lucy 157  
S R Lucy 993

BW	Adj. 205	WWR	CE	BW	WW	YW	Milk
79	779	113	4	1.5	72	130	23

Recommended for use on heifers. Dam has settled to AI service every year. Granddam WR 3/108. Pathfinder Great Granddam. 7/104

LOT 27

## S R STELLAR 319

BD: 03/07/23

Reg #: 20845396

#Mohnen Substantial 272  
Sitz Stellar 726D  
SITZ Pride 200B

#Benfield Substance 8506  
Mohnen Glyn Mawr Elba 1758  
#Connealy Final Product  
#Sitz Pride 308Y  
#Coleman Charlo 0256  
S A V Blackcap May 4136  
Bruin Torque 5261  
S R Blackcap 5109

Dam's Prod.	1/97
Calving Int.	1st calf
Udder	10
Docility	10

S A V Rainfall 6846  
S R Blackcap 192  
S R Blackcap 964

BW	Adj. 205	WWR	CE	BW	WW	YW	Milk
77	671	97	6	0.7	53	103	19

Recommended for use on heifers.

LOT 28

## S R STELLAR 303

BD: 03/02/23

Reg #: Pending

#Mohnen Substantial 272  
Sitz Stellar 726D  
SITZ Pride 200B

#Benfield Substance 8506  
Mohnen Glyn Mawr Elba 1758  
#Connealy Final Product  
#Sitz Pride 308Y  
#Coleman Charlo 0256  
S A V Blackcap May 4136  
#C A Emblazon 702  
#S R Bonnie Belle 7131

Dam's Prod.	1/105
Calving Int.	1st calf
Udder	10
Docility	9

S A V Rainfall 6846  
S R Bonnie Belle 1172  
S R Bonnie Belle 9106

BW	Adj. 205	WWR	CE	BW	WW	YW	Milk
67	729	105	8	-0.1	58	110	22

Recommended for use on heifers.



*"You've got to have some STOCKMAN SKILLS."*

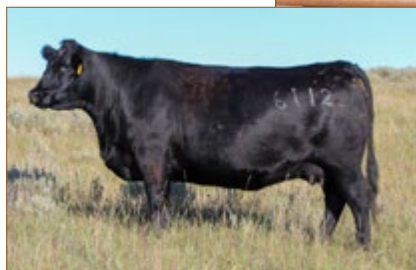
"IF ALL YOU'RE GOING TO DO IS CHASE NUMBERS, you're going to get in trouble real quick out here in these more arid environments. These cattle have to fit the environment. It takes too much money to get them into production and when we do get them into production, they need to stay in the herd for these ranchers. That means they've got to be fertile and good footed and everything that keeps a cow in production - good udders, teats."

"The numbers aren't going to tell you if the cattle are going to fit in your environment. People like numbers because they are simple, whether its EPDs or genomics or whatever. When it doesn't fit, it's not the numbers' problem. It's the way you used the tool. You've got to know how the cattle and the phenotypes fit your environment. I can't say that enough. Everybody wants things quick and simple. It doesn't work that way. . . THEY WANT THE NUMBER TO SOLVE THEIR PROBLEMS AND IT DOESN'T WORK THAT WAY. You've got to have some stockman skills."

- LEO MCDONNELL, former American Angus Association board member on the Angus Conversation podcast "McDonnells on Efficiency, Innovation, Abundant Opportunities and Disagreeing Gracefully"



**LOT 29  
S R ROBUST  
3526**



*S R Dorothy Ideal 6112  
Dam of Lots 29 and 30.*

*Flush Brothers*

**LOT 29**

**S R ROBUST 3526**

BD: 03/20/23 Reg #: 20851459

BW	Adj. 205	WWR	CE	BW	WW	YW	Milk
95	716	ET	3	2.1	63	104	17

**LOT 30**

**S R ROBUST 3528**

BD: 03/20/23 Reg #: 20851462

BC Surveyor 680D  
**BC Robust 0807**  
BC 327-8 CP Belle 0-807

#BC Eagle Eye 110-7  
BC 2266 Prides Lass 4132 680  
BC Pure Pride 327-8  
BC 607 CP Belle MF 807  
Rito 707 of Ideal 3407 7075  
S A V Blackcap May 4136  
#O C C Great Plains 943G  
Ideal 4637 of 452 285

#S A V Resource 1441  
**S R Dorothy Ideal 6112**  
S R Dorothy 968

Dam's Prod.	5/107
Calving Int.	457
Udder	10
Docility	10

BW	Adj. 205	WWR	CE	BW	WW	YW	Milk
97	677	ET	3	2.1	63	104	17



**LOT 32 • S R ROBUST 3117**

**LOT 31**

**S R ROBUST 3101 - OUT OF SALE**

BD: 03/14/23 Reg #: 20851471

**LOT 32**

**S R ROBUST 3117**

BD: 03/15/23 Reg #: 20851420

BC Surveyor 680D  
**BC Robust 0807**  
BC 327-8 CP Belle 0-807

#BC Eagle Eye 110-7  
BC 2266 Prides Lass 4132 680  
BC Pure Pride 327-8  
BC 607 CP Belle MF 807  
Rito 707 of Ideal 3407 7075  
S A V Blackcap May 4136  
#Sitz Alliance 6595  
#SR Polly 323

#S A V Resource 1441  
**S R Polly 7110**  
S R Polly 804

Dam's Prod.	5/110
Calving Int.	365
Udder	10
Docility	10

BW	Adj. 205	WWR	CE	BW	WW	YW	Milk
87	712	ET	3	2.5	67	110	19



*S R Polly 7110 • Dam of Lot 32*

Dam settled to AI service every year. Donor Granddam WR 6/113. Pathfinder Great Granddam.



**LOT 33 • S R GLORY DAYS 3126**



*S R Lucy 951 • Maternal Great Granddam of Lot 33*

**LOT 33 S R GLORY DAYS 3126**

BD: 03/17/23

Reg #: 20843724

S A V America 8018  
**S A V Glory Days 1832**  
 #S A V Madame Pride 3145

Bruin Torque 5261  
**S R Lucy 993**  
 #S R Lucy 535

S A V President 6847  
 S A V Madame Pride 0075  
 #S A V Priority 7283  
 S A V Madame Pride 1171  
 #S A V 004 Density 4336  
 Falcon Blackbird 6071  
 #S A V Resource 1441  
 S R Lucy 951

Dam's Prod.	3/108
Calving Int.	365
Udder	8.5
Docility	9

BW	Adj. 205	WWR	CE	BW	WW	YW	Milk
105	783	112	-4	6.2	80	144	22

Dam has settled to AI service every year. Pathfinder Granddam WR 7/104. Great Granddam WR 6/102.

**LOT 34 S R GLORY DAYS 343**

BD: 03/09/23

Reg #: 20843707

S A V America 8018  
**S A V Glory Days 1832**  
 #S A V Madame Pride 3145

Bruin Torque 5261  
**S R Dorothy Ideal 043**  
 S R Dorothy Ideal 7168

S A V President 6847  
 S A V Madame Pride 0075  
 #S A V Priority 7283  
 S A V Madame Pride 1171  
 #S A V 004 Density 4336  
 Falcon Blackbird 6071  
 #S A V Resource 1441  
 S R Dorothy Ideal 3116

Dam's Prod.	2/106
Calving Int.	367
Udder	7.5
Docility	9

BW	Adj. 205	WWR	CE	BW	WW	YW	Milk
90	755	108	3	3.9	74	133	23

Granddam WR 5/105



*S R Dorothy Ideal 7168 Maternal Granddam of Lot 34*



S R Betty 3210 • Maternal Great Granddam of Lot 36

**LOT 35**

**S R GLORY DAYS 395**

BD: 03/13/23

Reg #: 20843706

S A V America 8018  
**S A V Glory Days 1832**  
 #S A V Madame Pride 3145  
 Bruin Torque 5261  
**S R Beauty 0111**  
 S R Beauty 799

S A V President 6847  
 S A V Madame Pride 0075  
 #S A V Priority 7283  
 S A V Madame Pride 1171  
 #S A V 004 Density 4336  
 Falcon Blackbird 6071  
 #S A V Resource 1441  
 #S R Beauty 230

Dam's Prod.	2/104
Calving Int.	373
Udder	9
Docility	8

BW	Adj. 205	WWR	CE	BW	WW	YW	Milk
102	732	105	-5	6.4	73	134	21

Dam has settled to AI service every year. Pathfinder Great Granddam.

**LOT 36**

**S R GLORY DAYS 321**

BD: 03/07/23

Reg #: 20843625

S A V America 8018  
**S A V Glory Days 1832**  
 #S A V Madame Pride 3145  
 Bruin Torque 5261  
**S R Betty 0161**  
 S R Betty 741

S A V President 6847  
 S A V Madame Pride 0075  
 #S A V Priority 7283  
 S A V Madame Pride 1171  
 #S A V 004 Density 4336  
 Falcon Blackbird 6071  
 #S A V Resource 1441  
 S R Betty 3210

Dam's Prod.	2/106
Calving Int.	365
Udder	10
Docility	10

BW	Adj. 205	WWR	CE	BW	WW	YW	Milk
89	730	105	4	3.3	67	122	22

**LOT 37**

**S R GLORY DAYS 397**

BD: 03/14/23

Reg #: 20843747

S A V America 8018  
**S A V Glory Days 1832**  
 #S A V Madame Pride 3145  
 #Sinclair Emulation XXP  
**#S R Travette 7158**  
 S R Travette 223

S A V President 6847  
 S A V Madame Pride 0075  
 #S A V Priority 7283  
 S A V Madame Pride 1171  
 #N Bar Emulation EXT  
 #N Bar Primrose Y3051  
 #O C C Paxton 730P  
 S R Travette 818

Dam's Prod.	5/105
Calving Int.	365
Udder	10
Docility	10

BW	Adj. 205	WWR	CE	BW	WW	YW	Milk
101	722	104	-4	5.1	68	123	20

Dam has settled to AI service every year. Pathfinder Dam WR 5/105.



S A V Glory Days 1832 • Sire of Lots 33-37



S R Travette 7158 • Pathfinder Donor Dam of Lot 37



Bruin Torque 5261 • Maternal Grandsire of Lots 33-36

*Here's why* RATIOS MATTER

**CALF RATIOS** - Ratios tell you how that individual did in relation to his contemporaries. 100 is average. Most breeders don't list ratios. We list them because we want you to know exactly what you are buying.

**COW PRODUCTION RATIOS** - Most breeders don't list this data, either. What good is data unless you share it? Dam production shows you how many calves that cow has had and how they compare to the rest of the herd at either birth or weaning (BR vs WR).

---

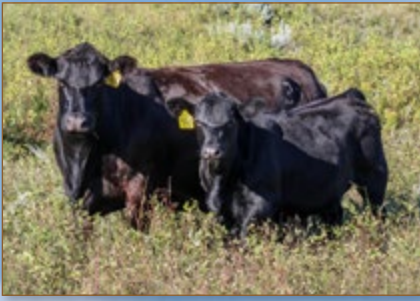


---

## **PROVEN, BALANCED COW-MAKERS**

Our cattle are backed by generations of proven, efficient genetics, emphasizing calving ease, fleshing ability, productivity, udder & foot quality, disposition, structure and fertility.





“IF YOU CAN’T PUT YOUR HEAD ON YOUR PILLOW AT NIGHT AND **VISUALIZE YOUR IDEAL COW**, THE ODDS OF YOU MAKING ONE ARE VERY, VERY SLIM.”

“I AM ANGUS: ED OLIVER, GEORGIA”




## OUR CATTLE *Thrive* IN A GRASS-BASED, NO-FRILLS ENVIRONMENT

From the beginning, we’ve been laser-focused on producing Angus cattle that prosper in a no-frills environment: moderate-framed, high-volume, easy-fleshing, productive cows with good feet, great udders and a quiet disposition. We expect our cows to re-breed quickly and wean a calf that is a high percentage of its dam’s bodyweight, year after year. Our cows have consistently increased weaning weights while increasing the percentage of cows that re-breed in the first 21 days. You won’t find any lick tubs or creep feeders hidden behind the hills of our pastures. **Cattle that can do more with less – that’s our definition of MATERNAL POWER™!**

From the beginning, we’ve also been very particular about the sires we select. **We hate surprises.** That’s why we use a small group of proven, balanced-trait AI sires on our cows each year. We conduct a tremendous amount of research – evaluating the generations of genetics behind a bull, as well as his progeny – before we commit. A powerful, consistent cowherd cannot be

built using a “little-bit-of-this-little-bit-of-that” strategy to sire selection. You must have a plan and a clear vision of what your ideal cow is.

**We know what it is like to start from scratch** – and how important it is to make cattle work for you, instead of the other way around. As your seedstock provider, we want your operations to be profitable and sustainable for generations – regardless of the market. **We believe you can achieve this by developing your own herd of efficient, problem-free livestock backed by Strommen Ranch MATERNAL POWER™ Angus genetics.**

We invite you to attend our Maternal POWER™ Angus Bull Sale, **Feb. 17, 2024**, starting at 3 p.m. at the ranch, Fort Rice, N.D. Our bulls’ pedigrees are stacked with six to eight generations of proven, balanced, female-making genetics and we stand behind them with an industry-leading guarantee, exceptional customer service, and a powerful, maternally oriented herd. 



LOT 38 • S R EPITOME 3705

LOT 38

**S R EPITOME 3705**

BD: 03/19/23

Reg #: 20861102

#O C C Paxton 730P  
**O C C Epitome 630E**  
 O C C Dixie Erica 730W

O C C Focus 813F  
 O C C Blackbird 736K  
 O C C Rear End 751R  
 O C C Dixie Erica 776M  
 #Baldrige Kaboom K243 KCF  
 #Parka of Conanga 241  
 Reich Final Answer 902  
 Reich Lady N23

Dam's Prod.	8/104
Calving Int.	365
Udder	
Docility	

#Connealy Thunder  
**Reich Lady 303**  
 Reich Lady 149

BW	Adj. 205	WWR	CE	BW	WW	YW	Milk
76	679	111	11	-1	56	94	23

Recommended for use on heifers. Granddam WR 3/106.

LOT 39

**S R EPITOME 3714**

BD: 03/23/23

Reg #: 20861042

#O C C Paxton 730P  
**O C C Epitome 630E**  
 O C C Dixie Erica 730W

O C C Focus 813F  
 O C C Blackbird 736K  
 O C C Rear End 751R  
 O C C Dixie Erica 776M  
 #LT Territory 5824 of EA  
 #Reich Miss wix 708  
 #Vermilion Dateline 7078  
 #Jaynbee Patricia 795G

Dam's Prod.	4/105
Calving Int.	374
Udder	
Docility	

Reich Territory 1155  
**Reich Patricia F273**  
 Reich Patricia N21

BW	Adj. 205	WWR	CE	BW	WW	YW	Milk
76	670	109	12	-0.6	55	89	23

Recommended for use on heifers. Granddam WR 14/100.

LOT 40

**S R EPITOME 3713**

BD: 03/23/23

Reg #: 20861043

#O C C Paxton 730P  
**O C C Epitome 630E**  
 O C C Dixie Erica 730W

O C C Focus 813F  
 O C C Blackbird 736K  
 O C C Rear End 751R  
 O C C Dixie Erica 776M  
 #LT Territory 5824 of EA  
 #Reich Miss wix 708  
 #Sitz Alliance 6595  
 BT MS Pride 24L

Dam's Prod.	3/99
Calving Int.	554
Udder	
Docility	

Reich Territory 1155  
**Reich Pride F263**  
 Reich Pride 637

BW	Adj. 205	WWR	CE	BW	WW	YW	Milk
84	617	101	10	0	50	85	24

Granddam WR 11/104.

LOT 41

**S R EPITOME 3725**

BD: 03/26/23

Reg #: 20861103

#O C C Paxton 730P  
**O C C Epitome 630E**  
 O C C Dixie Erica 730W

O C C Focus 813F  
 O C C Blackbird 736K  
 O C C Rear End 751R  
 O C C Dixie Erica 776M  
 #O C C Paxton 730P  
 S R Eldorene 966  
 Reich Bandwagon 906  
 #Reich Blackcap Lady 5103

Dam's Prod.	9/102
Calving Int.	364
Udder	
Docility	

S R Paxton 128  
**Reich Blackcap 3134**  
 Reich Blackcap Lady 161

BW	Adj. 205	WWR	CE	BW	WW	YW	Milk
78	664	108	8	0.7	56	92	22

Recommended for use on heifers.

*In 2023, we had the distinct pleasure of welcoming international visitors from Argentina, Brazil, New Zealand and Australia.*





LOT 42 • S R EPITOME 3720

LOT 42

**S R EPITOME 3720**

BD: 03/24/23

Reg #: 20861046

#O C C Paxton 730P  
**O C C Epitome 630E**  
 O C C Dixie Erica 730W  
  
 Ellingson Attraction 3326  
**V Reich Annie F207**  
 #V Reich Annie 447

O C C Focus 813F  
 O C C Blackbird 736K  
 O C C Rear End 751R  
 O C C Dixie Erica 776M  
 E A Main Attraction 8014  
 E A Landmark 823  
 #Connealy Thunder  
 V Reich Annie 231

Dam's Prod.	4/106
Calving Int.	366
Udder	
Docility	

BW	Adj. 205	WWR	CE	BW	WW	YW	Milk
76	658	107	10	-0.4	58	96	25

Recommended for use on heifers. Pathfinder Granddam WR 7/103. Great Granddam WR 8/101. Longevity and Fertility.

LOT 43

**S R EPITOME 3705**

BD: 03/27/23

Reg #: 20861097

#O C C Paxton 730P  
**O C C Epitome 630E**  
 O C C Dixie Erica 730W  
  
 Ellingson Attraction 3326  
**Reich Patricia 5242**  
 Reich Patricia N21

O C C Focus 813F  
 O C C Blackbird 736K  
 O C C Rear End 751R  
 O C C Dixie Erica 776M  
 E A Main Attraction 8014  
 E A Landmark 823  
 #Vermilion Dateline 7078  
 #Jaynbee Patricia 795G

Dam's Prod.	7/104
Calving Int.	370
Udder	
Docility	

BW	Adj. 205	WWR	CE	BW	WW	YW	Milk
88	643	105	7	0.7	55	89	24

LOT 44

**S R EPITOME 3708**

BD: 03/19/23

Reg #: 20861045

#O C C Paxton 730P  
**O C C Epitome 630E**  
 O C C Dixie Erica 730W  
  
 Ellingson Attraction 3326  
**Reich Miss Wix F169**  
 Reich Miss Wix 533

O C C Focus 813F  
 O C C Blackbird 736K  
 O C C Rear End 751R  
 O C C Dixie Erica 776M  
 E A Main Attraction 8014  
 E A Landmark 823  
 #Basin Payweight 1682  
 Reich Miss Wix 3260

Dam's Prod.	4/103
Calving Int.	374
Udder	
Docility	

BW	Adj. 205	WWR	CE	BW	WW	YW	Milk
70	664	108	12	-1.6	61	100	24

Recommended for use on heifers. Granddam WR 5/104.

LOT 45

**S R EPITOME 3718**

BD: 03/23/23

Reg #: 20861106

#O C C Paxton 730P  
**O C C Epitome 630E**  
 O C C Dixie Erica 730W  
  
 LT In Reach 7806 of EA  
**Reich Forever Lady 0258**  
 Reich Forever Lady 829

O C C Focus 813F  
 O C C Blackbird 736K  
 O C C Rear End 751R  
 O C C Dixie Erica 776M  
 #Mytty In Focus  
 EA Emblynette 5001  
 #B C Matrix 4132  
 #Reich Forever Lady 6132

Dam's Prod.	12/104
Calving Int.	366
Udder	
Docility	

BW	Adj. 205	WWR	CE	BW	WW	YW	Milk
84	649	106	8	0.7	54	94	24

Granddam WR 7/101. Longevity and Fertility.





LOT 46 • S R LANDMARK 317

LOT 46

**S R LANDMARK 317**

BD: 03/07/23

Reg #: 20842676

S A V Territory 7225  
**S A V Landmark 9148**  
 S A V Blackcap May 1420

#S A V Resource 1441  
 S A V Emblynette 3293  
 Rito 707 of Ideal 3407 7075  
 S A V Blackcap May 4136  
 HF Kodiak 5R  
 TLA Beauty 5R  
 #Connealy Capitalist 028  
 S R Dorothy Ideal 471

Dam's Prod.	4/106
Calving Int.	352
Udder	8
Docility	10

#Soo Line Motive 9016  
**S R Dorothy Ideal 804**  
 #S R Dorothy Ideal 604

BW	Adj. 205	WWR	CE	BW	WW	YW	Milk
77	706	101	6	0.9	67	115	17

Recommended for use on heifers. Pathfinder Granddam WR 6/106.



GENEX

S R Silverado 083 is a Maternal Brother to the Dam of Lot 46.

*"The work of breeding animals is a work for a long-time, requiring pluck, patience, a high degree of intelligence and a **close practical judgement.**"*

*W.D. Hoard, 1885*



LOT 47

**S R LANDMARK 372**

BD: 03/12/23

Reg #: 20842686

S A V Territory 7225  
**S A V Landmark 9148**  
 S A V Blackcap May 1420

#S A V Resource 1441  
 S A V Emblynette 3293  
 Rito 707 of Ideal 3407 7075  
 S A V Blackcap May 4136  
 #S A V 004 Density 4336  
 Falcon Blackbird 6071  
 #Soo Line Motive 9016  
 #S R Clova Pride 5105

Dam's Prod.	2/103
Calving Int.	350
Udder	8
Docility	9

Bruin Torque 5261  
**S R Clova Pride 070**  
 S R Clova Pride 732

BW	Adj. 205	WWR	CE	BW	WW	YW	Milk
95	742	106	0	3.2	72	128	17

Granddam WR 4/104. Pathfinder Great Granddam 6/103.



*Flush Brothers*

**LOT 48 S R LANDMARK 3501**

BD: 03/13/23 Reg #: 20843830

BW	Adj. 205	WWR	CE	BW	WW	YW	Milk
87	658	ET	-4	3.5	74	128	16

**LOT 49 S R LANDMARK 3505**

BD: 03/14/23 Reg #: 20843815

<b>S A V Landmark 9148</b>	S A V Territory 7225	#S A V Resource 1441	<b>Dam's Prod.</b>	4/106
	S A V Blackcap May 1420	S A V Emblynette 3293		
<b>#S R Rachel 8110</b>	#Sinclair Emulation XXP	Rito 707 of Ideal 3407 7075	<b>Calving Int.</b>	365
	Reich Rachel 588	S A V Blackcap May 4136		
		#N Bar Emulation EXT	<b>Udder</b>	10
		#N Bar Primrose Y3051		
		#S A V Resource 1441	<b>Docility</b>	10
		#Reich Eota Lass 798		

BW	Adj. 205	WWR	CE	BW	WW	YW	Milk
95	666	ET	-4	3.5	74	128	16

Dam has settled to AI service every year. Pathfinder Dam WR 4/106. Granddam WR 6/104. Pathfinder Great Granddam WR 11/104

**LOT 50 S R LANDMARK 3107**

BD: 03/14/23 Reg #: 20842692

<b>S A V Landmark 9148</b>	S A V Territory 7225	#S A V Resource 1441	<b>Dam's Prod.</b>	7/99
	S A V Blackcap May 1420	S A V Emblynette 3293		
<b>S R O Lass 550</b>	#Connealy Thunder	Rito 707 of Ideal 3407 7075	<b>Calving Int.</b>	364
	S R O Lass 383	S A V Blackcap May 4136		
		#Baldridge Kaboom K243 KCF	<b>Udder</b>	9
		#Parka of Conanga 241		
		Ox Bow Revival 1313	<b>Docility</b>	10
		S R O Lass 119		

BW	Adj. 205	WWR	CE	BW	WW	YW	Milk
86	726	104	3	2.1	67	117	16

Dam has settled to AI service every year. His Thunder dam is a beautiful cow.

**LOT 51 S R LANDMARK 359**

BD: 03/10/23 Reg #: 20842684

<b>S A V Landmark 9148</b>	S A V Territory 7225	#S A V Resource 1441	<b>Dam's Prod.</b>	7/100
	S A V Blackcap May 1420	S A V Emblynette 3293		
<b>S R Betty 578</b>	#Connealy Thunder	Rito 707 of Ideal 3407 7075	<b>Calving Int.</b>	365
	S R Betty 3207	S A V Blackcap May 4136		
		#Baldridge Kaboom K243 KCF	<b>Udder</b>	7
		#Parka of Conanga 241		
		#O C C Emblazon 854E	<b>Docility</b>	8
		M H Betty 916		

BW	Adj. 205	WWR	CE	BW	WW	YW	Milk
83	685	98	4	1.1	57	97	17

Dam has settled to AI service every year.



*S R Rachel 8110 • Dam of Lots 48-49*



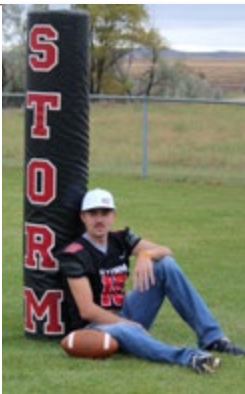
*S R Rachel 588 • Maternal Granddam of Lots 48-49*



*S R O Lass 550 • Dam of Lot 50*



*Cooper will graduate from Flasher High School on May 19, 2024. After high school, he plans on attending Western Welding Academy in Gillette, Wyo., then travel the country welding pipelines.*





**LOT 53 • S R LANDMARK 3520**



*S R Polly 804 • Dam of Lots 52-54*

*Flush Brothers*

**LOT 52**

**S R LANDMARK 3511**

BD: 03/18/23 Reg #: 20849730

BW	Adj. 205	WWR	CE	BW	WW	YW	Milk
105	704	ET	1	2.1	66	113	21

**LOT 53**

**S R LANDMARK 3520**

BD: 03/20/23 Reg #: 20843836

S A V Territory 7225  
**S A V Landmark 9148**  
 S A V Blackcap May 1420

#S A V Resource 1441  
 S A V Emblynette 3293  
 Rito 707 of Ideal 3407 7075  
 S A V Blackcap May 4136  
 #Sitz Traveler 8180  
 #Sitz Barbaramere Jet 2698  
 #O C C Embazon 854E  
 #M H Polly 817

Dam's Prod.	6/113
Calving Int.	352
Udder	10
Docility	10

#Sitz Alliance 6595  
**S R Polly 804**  
 #SR Polly 323

BW	Adj. 205	WWR	CE	BW	WW	YW	Milk
97	758	ET	1	2.1	66	113	21

Pathfinder Granddam WR 5/110. Pathfinder Great Granddam WR 11/102.



*Maternal Brother to Lots 52-53 and Full Brother to Lot 54  
 Purchased by Alan Hendrickson*



*Maternal Brother to Lots 52-54  
 Purchased by Roger Harstad*



*Maternal Brother to Lots 52-54  
 Purchased by Pine Coulee Angus*



*Maternal Brother to Lots 52-54  
 Purchased by Cody Staiger*

**LOT 54**

**S R TERRITORY 3527**

BD: 03/18/23 Reg #: 20843814

#S A V Resource 1441  
**S A V Territory 7225**  
 S A V Emblynette 3293

Rito 707 of Ideal 3407 7075  
 S A V Blackcap May 4136  
 #S A V 004 Density 4336  
 S A V Emblynette 7411  
 #Sitz Traveler 8180  
 #Sitz Barbaramere Jet 2698  
 #O C C Embazon 854E  
 #M H Polly 817

Dam's Prod.	6/113
Calving Int.	352
Udder	10
Docility	10

#Sitz Alliance 6595  
**S R Polly 804**  
 #SR Polly 323

BW	Adj. 205	WWR	CE	BW	WW	YW	Milk
88	754	ET	4	1.9	64	110	26

Pathfinder Granddam WR 5/110. Pathfinder Great Granddam WR 11/102.

*“As input costs continue to rise, profitability in the beef business will be driven by cowherds that have the genetics to do more with less.”*

# MARKETING *opportunities*

## THROUGH THE BADLANDS ANGUS ALLIANCE

If you have cattle heavily influenced by , Strommen Ranch, Talkington Angus or Best Angus genetics and you'd like assistance in marketing them, please contact us!

In addition to helping our customers capture added value for their bred heifers and replacement heifer calves, we are working to help you capture added value for your entire calf crop.

*Contact us about these marketing options:*

### **BADLANDS ANGUS ALLIANCE BULL & BRED HEIFER SALE**

Dec. 4, 2024 • Stockmen's West, Dickinson  
Featuring commercial bred heifers that are out of and bred back to Strommen, Talkington or Best genetics.

### **BADLANDS ANGUS ALLIANCE REPLACEMENT HEIFER CALF SPECIAL**

Jan. 23, 2025 • Stockmen's Livestock, Dickinson  
Featuring commercial replacement heifers that are heavily influenced by Strommen, Talkington or Best genetics. (These heifers directly qualify for our bred heifer sale when they are bred back to Strommen, Talkington or Best Angus bulls.)

We have the utmost confidence in the following representatives. They have extensive experience and will represent your cattle with honesty and integrity to help you capture the most value for your operation:

### **SUPERIOR LIVESTOCK AUCTION VIDEO SALES**

Lewistown Livestock Auction • Lewistown, MT  
Kyle Shobe ..... 406-366-0472

### **STOCKMEN'S LIVESTOCK • DICKINSON, ND**

John Fischer ..... 701-290-1606  
Austin Henderson ..... 701-471-2673  
Dan O'Donnell ..... 406-939-0526

### **NORTHERN LIVESTOCK VIDEO SALES**

Jarvis Sorenson ..... 701-570-6680



**BEST ANGUS**  
PETE & VAWNITA BEST

Watford City, ND • (701) 570-6959 •   
[www.BestAngusAndQuarterHorses.com](http://www.BestAngusAndQuarterHorses.com)



**STROMMEN RANCH**  
AARON & SHEYNA STROMMEN

Solen, ND • (701) 290-7983  
 • [www.StrommenRanch.com](http://www.StrommenRanch.com)



**TALKINGTON ANGUS**  
SHANE & AMANDA TALKINGTON

Belfield, ND • (701) 290-7222 •   
[www.TalkingtonAngusRanch.com](http://www.TalkingtonAngusRanch.com)

*Flush Brothers*

LOT **55**

**S R RAINMAKER 3130**

BD: 03/17/23

Reg #: 20848303

BW	Adj. 205	WWR	CE	BW	WW	YW	Milk
93	758	ET	6	1.2	54	96	34

LOT **56**

**S R RAINMAKER 3135**

BD: 03/18/23

Reg #: 20848310

Basin Rainmaker 2704  
**Basin Rainmaker 4404**  
Basin Joy 1036

#Basin Rainmaker P175  
#Basin Erica 7520 BV  
#Basin Payweight 107S  
Basin Joy 566T  
#Sitz Traveler 8180  
#Sitz Barbaramere Jet 2698  
#O C C Emblazon 854E  
#M H Polly 817

Dam's Prod.	6/113
Calving Int.	352
Udder	10
Docility	10

#Sitz Alliance 659S  
**S R Polly 804**  
#SR Polly 323

BW	Adj. 205	WWR	CE	BW	WW	YW	Milk
95	739	ET	6	1.2	54	96	34

Dam WR 6/113. Pathfinder Granddam WR 5/110. Pathfinder Great Granddam 11/104.



*Basin Rainmaker 4404 • Sire of Lots 55-63*

LOT **57**

**S R RAINMAKER 3106**

BD: 03/14/23

Reg #: 20848187

Basin Rainmaker 2704  
**Basin Rainmaker 4404**  
Basin Joy 1036

#Basin Rainmaker P175  
#Basin Erica 7520 BV  
#Basin Payweight 107S  
Basin Joy 566T  
#Tehama Blackcap Revolution  
#Tehama 717 Band 876  
#Tehama Blackcap E406  
#Sinclair Emulation XXP  
S R Lady Blue 118

#S R Lady Blue 7107  
**S R Lady Blue 095**

Dam's Prod.	2/111
Calving Int.	365
Udder	10
Docility	8

BW	Adj. 205	WWR	CE	BW	WW	YW	Milk
84	765	110	4	1.9	73	121	31

Dam has settled to AI Service to 4404 every year. Pathfinder Granddam WR 5/105. Donor Great Granddam WR 5/115



*S R Bonnie Belle 7102 • Pathfinder Granddam of Lot 58*

LOT **58**

**S R RAINMAKER 3131**

BD: 03/17/23

Reg #: 20848185

Basin Rainmaker 2704  
**Basin Rainmaker 4404**  
Basin Joy 1036

#Basin Rainmaker P175  
#Basin Erica 7520 BV  
#Basin Payweight 107S  
Basin Joy 566T  
#Tehama 717 Band 876  
#Tehama Blackcap E406  
#Sinclair Emulation XXP  
#S R Bonnie Belle 104

Dam's Prod.	2/103
Calving Int.	369
Udder	9
Docility	9

#Tehama Blackcap Revolution  
**S R Bonnie Belle 0120**  
#S R Bonnie Belle 7102

BW	Adj. 205	WWR	CE	BW	WW	YW	Milk
94	719	103	-2	4.4	69	120	29

Dam has settled to AI Service every year. Pathfinder Granddam WR 5/108. Pathfinder Great Granddam 4/116.

LOT **59**

**S R RAINMAKER 3112**

BD: 03/15/23

Reg #: 20848173

Basin Rainmaker 2704  
**Basin Rainmaker 4404**  
Basin Joy 1036

#Basin Rainmaker P175  
#Basin Erica 7520 BV  
#Basin Payweight 107S  
Basin Joy 566T  
#Tehama 717 Band 876  
#Tehama Blackcap E406  
#B C C Bushwacker 41-93  
Sitz Emma E 2552

#Tehama Blackcap Revolution  
**S R Emma E 196**  
S R Emma E 4210

Dam's Prod.	1/113
Calving Int.	1st calf
Udder	9.5
Docility	8

BW	Adj. 205	WWR	CE	BW	WW	YW	Milk
93	779	113	-6	5	70	115	29





LOT 60 • S R RAINMAKER 324

LOT 60

**S R RAINMAKER 324**

BD: 03/07/23

Reg #: 20842678

Basin Rainmaker 2704  
**Basin Rainmaker 4404**  
 Basin Joy 1036

#Basin Rainmaker P175  
 #Basin Erica 7520 BV  
 #Basin Payweight 107S  
 Basin Joy 566T  
 S A V Territory 7225  
 S A V Blackcap May 1420  
 #Sinclair Emulation XXP  
 S R Emma E 4210

Dam's Prod.	1/107
Calving Int.	1st calf
Udder	10
Docility	10

S A V Landmark 9148  
**S R Emma E 165**  
 S R Emma E 851

BW	Adj. 205	WWR	CE	BW	WW	YW	Milk
73	748	107	5	1	67	114	26

**Recommended for use on heifers.** Granddam has settled to AI service every year.



*Cassidy is pursuing a degree in Agricultural Communication with minors in Advertising and Animal Science at South Dakota State University. This summer she worked as the communications intern at Ag Management Solutions, a division of MN Soybean Growers, in Mankato, MN. She continues to work for them remotely on a part-time basis while at college.*



Coleman Donna 186 • Maternal Great Granddam of Lot 61



S R Polly 804 • Maternal Great Granddam of Lot 62

**LOT 61**

**S R RAINMAKER 354**

BD: 03/09/23

Reg #: 20842683

Basin Rainmaker 2704  
**Basin Rainmaker 4404**  
Basin Joy 1036

#Basin Rainmaker P175  
#Basin Erica 7520 BV  
#Basin Payweight 107S  
Basin Joy 566T  
S A V Territory 7225  
S A V Blackcap May 1420  
#O C C Juneau 807J  
Coleman Donna 186

Dam's Prod.	1/103
Calving Int.	1st calf
Udder	9
Docility	10

S A V Landmark 9148  
**S R Donna 167**  
S R Donna 7111

BW	Adj. 205	WWR	CE	BW	WW	YW	Milk
74	714	103	6	0.8	63	107	25

**Recommended for use on heifers.** Dam has settled to AI service every year.

**LOT 62**

**S R RAINMAKER 344**

BD: 03/09/23

Reg #: 20842680

Basin Rainmaker 2704  
**Basin Rainmaker 4404**  
Basin Joy 1036

#Basin Rainmaker P175  
#Basin Erica 7520 BV  
#Basin Payweight 107S  
Basin Joy 566T  
S A V Territory 7225  
S A V Blackcap May 1420  
#O C C Juneau 807J  
S R Polly 804

Dam's Prod.	1/99
Calving Int.	1st calf
Udder	10
Docility	9

S A V Landmark 9148  
**S R Polly 108**  
S R Polly 674

BW	Adj. 205	WWR	CE	BW	WW	YW	Milk
81	682	99	5	1.4	59	104	27

Dam and Granddam have settled to AI service every year. Granddam WR 4/109. Great Granddam WR 6/113.



2023 FHS Homecoming Queen Alivia and King Cooper. #10 had quite a cheering section for that night's game!



Koupal Advance 28 • Maternal Grandsire of Lot 63

**LOT 63**

**S R RAINMAKER 379**

BD: 03/12/23

Reg #: 20848190

Basin Rainmaker 2704  
**Basin Rainmaker 4404**  
Basin Joy 1036

#Basin Rainmaker P175  
#Basin Erica 7520 BV  
#Basin Payweight 107S  
Basin Joy 566T  
#Koupal Advance 28  
Koupal Ebonette 734  
#Leachman Right Time  
B C C Ambush Anita 41-158

Dam's Prod.	3/106
Calving Int.	365
Udder	8
Docility	8

#Koupal Advance 28  
**#S R Anita 807**  
#S R Anita 679

BW	Adj. 205	WWR	CE	BW	WW	YW	Milk
75	715	103	12	-1.1	54	93	36

**Recommended for use on heifers.** Settled to AI service every year. Pathfinder Dam WR 3/106. Pathfinder Granddam WR 6/105 and also has settled to AI service every year.



# SOMETHING FOR EVERYONE?

## NOT HERE. LET ME EXPLAIN:

A lot of pride and effort goes into building our cowherd. Our goal is to have very similar phenotype in each and every animal with a slightly different, but very similar, pedigree base. We believe you can go home with any of our bulls and get a consistent product. We don't have something for everyone. We don't have terminal, carcass-type cattle. We also don't have the extreme high-performance cattle. They require too many profit-scalping inputs. They simply don't work for us financially, in our environment, or in our customers' environment.

What we do have is genetics with a maternally focused base that have been selected and sorted for the profitable traits that commercial cattlemen need to generate income. We think the value of buying genetics from someone that has a designed breeding program is knowing what you are getting and expecting that every bull will have a maternal lineage that fits our standards for what we value in good Angus females. We also believe that your herd will look very similar to the seedstock provider you buy your bulls from. If you buy from someone that has a shotgun, mix-and-match approach to breeding cattle, it will show in your cow herd and in your calf crop with extreme inconsistency.



*Pictured are a few of the Strommen Ranch Bulls we've sold since 2019.*





**LOT 64 • S R TORQUE 382**



*Bruin Torque 5261 • Sire of Lots 64-70*

**LOT 64 S R TORQUE 382**

BD: 03/13/23 Reg #: 20842689

#S A V 004 Density 4336 <b>Bruin Torque 5261</b> Falcon Blackbird 6071	#S A V 8180 Traveler 004 S A V May 7238 #Connealy Dateline #Vermilion Blackbird 5044 #Coleman Charlo 0256 S A V Blackcap May 4136 #Koupal Advance 28 S R Betty 613	<b>Dam's Prod.</b> 2/104 <b>Calving Int.</b> 370 <b>Udder</b> 7 <b>Docility</b> 7
--	---	--

S A V Rainfall 6846  
**S R Betty 036**  
S R Betty 812

BW	Adj. 205	WWR	CE	BW	WW	YW	Milk
85	753	108	6	2.3	64	121	27

Dam has settled to AI service every year.

**LOT 65 S R TORQUE 378**

BD: 03/12/23 Reg #: 20842688

#S A V 004 Density 4336 <b>Bruin Torque 5261</b> Falcon Blackbird 6071	#S A V 8180 Traveler 004 S A V May 7238 #Connealy Dateline #Vermilion Blackbird 5044 #Coleman Charlo 0256 S A V Blackcap May 4136 #Soo Line Motive 9016 S R Clova Pride 6160	<b>Dam's Prod.</b> 2/100 <b>Calving Int.</b> 353 <b>Udder</b> 7.5 <b>Docility</b> 8
--	---	--

S A V Rainfall 6846  
**S R Clova Pride 0142**  
S R Clova Pride 823

BW	Adj. 205	WWR	CE	BW	WW	YW	Milk
91	747	107	1	3	63	119	24

Dam has settled to AI service every year.



*S R Lady Blue 118 • Maternal Granddam of Lot 66*

**LOT 66 S R TORQUE 314**

BD: 03/04/23 Reg #: 20842675

#S A V 004 Density 4336 <b>Bruin Torque 5261</b> Falcon Blackbird 6071	#S A V 8180 Traveler 004 S A V May 7238 #Connealy Dateline #Vermilion Blackbird 5044 #Jauer 353 Traveler 589 27 Sitz Pride 2561 #O C C Paxton 730P #S R Lady Blue 631	<b>Dam's Prod.</b> 4/104 <b>Calving Int.</b> 363 <b>Udder</b> 6 <b>Docility</b> 10
--	--	---

#Sitz 4 Aces 4551  
**S R Lady Blue 819**  
S R Lady Blue 118

BW	Adj. 205	WWR	CE	BW	WW	YW	Milk
95	738	106	2	3.2	62	112	25

Granddam WR 5/115. Great Granddam WR 7/106



**LOT 67**

**S R TORQUE 392**

BD: 03/13/23

Reg #: 20842691

#S A V 004 Density 4336  
**Bruin Torque 5261**  
 Falcon Blackbird 6071

#S A V 8180 Traveler 004  
 S A V May 7238  
 #Connealy Dateline  
 #Vermilion Blackbird 5044  
 Rito 707 of Ideal 3407 7075  
 S A V Blackcap May 4136  
 #O C C Paxton 730P  
 #S R Lady Blue 631

Dam's Prod.	7/98
Calving Int.	363
Udder	8.5
Docility	10

#S A V Resource 1441  
**S R Lady Blue 585**  
 S R Lady Blue 118

BW	Adj. 205	WWR	CE	BW	WW	YW	Milk
93	701	101	6	2.3	57	107	23

Dam has settled to AI service every year. Granddam WR 5/115.



S R Lady Blue 585 • Dam of Lot 67

**LOT 68**

**S R TORQUE 3715**

BD: 03/23/23

Reg #: 20854048

#S A V 004 Density 4336  
**Bruin Torque 5261**  
 Falcon Blackbird 6071

#S A V 8180 Traveler 004  
 S A V May 7238  
 #Connealy Dateline  
 #Vermilion Blackbird 5044  
 #S A V Resource 1441  
 S A V Elba 9806  
 #L T Bandwagon 3105  
 Reich Lady 796

Dam's Prod.	4/103
Calving Int.	368
Udder	
Docility	

S A V Resource 5181  
**Reich Lady F337**  
 Reich Lady 904

BW	Adj. 205	WWR	CE	BW	WW	YW	Milk
84	631	103	8	1.7	49	96	26

Granddam WR 9/99. Great Granddam WR 6/102.

**LOT 69**

**S R TORQUE 3728**

BD: 03/26/23

Reg #: 20854056

#S A V 004 Density 4336  
**Bruin Torque 5261**  
 Falcon Blackbird 6071

#S A V 8180 Traveler 004  
 S A V May 7238  
 #Connealy Dateline  
 #Vermilion Blackbird 5044  
 #O C C Emblazon 854E  
 Limestone Blackcap R128  
 #B C Matrix 4132  
 Reich Enchantress 7105

Dam's Prod.	6/100
Calving Int.	368
Udder	
Docility	

#C C A Emblazon 702  
**Reich Enchantress D099**  
 Reich Enchantress 1187

BW	Adj. 205	WWR	CE	BW	WW	YW	Milk
80	614	100	11	0.3	51	97	22

Recommended for use on heifers.

**LOT 70**

**S R TORQUE 3730**

BD: 03/26/23

Reg #: 20854057

#S A V 004 Density 4336  
**Bruin Torque 5261**  
 Falcon Blackbird 6071

#S A V 8180 Traveler 004  
 S A V May 7238  
 #Connealy Dateline  
 #Vermilion Blackbird 5044  
 #S A V Final Answer 0035  
 Prides Pita of Conanga 8821  
 BC Pure Pride 755-1  
 Reich Blackcap 6117

Dam's Prod.	4/101
Calving Int.	362
Udder	
Docility	

#Connealy Capitalist 028  
**Reich Blackcap F108**  
 Reich Blackcap 460

BW	Adj. 205	WWR	CE	BW	WW	YW	Milk
92	638	104	5	3.1	58	108	21



Since 2015, we've worked with 10 young Angus enthusiasts through our ranch-sponsored summer internship program. The internship focuses on bovine reproduction and provides extensive exposure to embryo transfer and artificial insemination projects, not only at Strommen Ranch but for our customers, as well. This year, we hired Amber Staab of Ord, NE, who became an invaluable part of the team. Amber is quite a go-getter. While attending the University of Nebraska, Lincoln (UNL), she competed on the UNL Livestock Judging Team, launched her own farm-to-table beef business and earned her bachelors of science degree in agribusiness/livestock industries and entrepreneurship, all in a matter of 3.5 years!

**ANNUAL INTERN UPDATE**



We've been very fortunate that every one of our interns has become a part of our extended family. We were able to see many of them in person in 2023, including Jacob Klaudt, Katherine Voegel, Lacy (Meister) Griffin, Tracy Davis, Erica Gilmore, Cora (Huss) Smith and of course, Kayla Weinzierl. We caught up with Katherine



(top left) and her fiancée Denton Erickson during the National Angus Convention this fall in Orlando, FL. After the convention, we drove south of Orlando to tour the ranch Lacy's husband Jarrett manages (second from top). How neat to see black cattle and palm trees! We kept our eyes peeled for alligators, but didn't catch a glimpse. Earlier in the year we celebrated with Cora (third from top) and her husband Frank as they tied the knot, and continue to cheer for Jacob as he pursues his livestock judging goals. As



a member of the Kansas State Livestock Judging Team, Jacob has had an exceptional year, being named the High Individual in Reasons at the NAILE in Louisville, KY and the Reserve High Individual Overall at the 2024 Cattleman's Congress in Oklahoma City, OK!

If you know of someone in search of an internship focusing on bovine reproduction, invite them to apply for our 2024 Summer Internship! Details can be found on our website in March.



LOT 71 • S R EPITOME 3732

LOT 71

**S R EPITOME 3732**

BD: 03/26/23

Reg #: 20861041

#O C C Paxton 730P  
**O C C Epitome 630E**  
 O C C Dixie Erica 730W  
 Reich 3323 Game Day 5210  
**Reich Forever Lady G199**  
 Reich Forever Lady 5236

O C C Focus 813F  
 O C C Blackbird 736K  
 O C C Rear End 751R  
 O C C Dixie Erica 776M  
 Ox Bow Game Day 3323  
 #Reich Beauty 1158  
 BC Pure Pride 755-1  
 Reich Forever Lady 0258

Dam's Prod.	3/97
Calving Int.	368
Udder	
Docility	

BW	Adj. 205	WWR	CE	BW	WW	YW	Milk
92	662	108	3	2.7	59	100	23

Granddam WR 7/99.

LOT 72

**S R EPITOME 3729**

BD: 03/26/23

Reg #: 20861096

#O C C Paxton 730P  
**O C C Epitome 630E**  
 O C C Dixie Erica 730W  
 Ox Bow Game Day 3323  
**Reich Blackcap Lady D269**  
 Reich Blackcap Lady 326

O C C Focus 813F  
 O C C Blackbird 736K  
 O C C Rear End 751R  
 O C C Dixie Erica 776M  
 #GDAR Game Day 449  
 Ox Bow Lucy 433  
 #Connealy Thunder  
 Reich Blackcap Lady 1217

Dam's Prod.	6/103
Calving Int.	368
Udder	
Docility	

BW	Adj. 205	WWR	CE	BW	WW	YW	Milk
84	671	109	7	1.4	57	97	25

LOT 73

**S R EPITOME 3731**

BD: 03/26/23

Reg #: 20861032

#O C C Paxton 730P  
**O C C Epitome 630E**  
 O C C Dixie Erica 730W  
 Reich 3323 Game Day 5210  
**Reich Winsome G216**  
 Reich Winsome D194

O C C Focus 813F  
 O C C Blackbird 736K  
 O C C Rear End 751R  
 O C C Dixie Erica 776M  
 Ox Bow Game Day 3323  
 #Reich Beauty 1158  
 #S A V Final Answer 0035  
 Reich Winsome 1202

Dam's Prod.	3/106
Calving Int.	368
Udder	
Docility	

BW	Adj. 205	WWR	CE	BW	WW	YW	Milk
92	710	116	4	2.5	62	103	25



LOT 73 • S R EPITOME 3731

“THE GOAL ISN'T TO LIVE FOREVER,  
 BUT TO CREATE SOMETHING *that will!*”

-CHUCK\_PALAHNIUK

What  
**MATERNAL  
 POWER™**

means to us:

Scan this QR code with  
 your smart phone's  
 camera app to watch  
 a short video about  
 Strommen Ranch!



## LOT 74 S R EPITOME 3710

BD: 03/19/23

Reg #: 20860956

#O C C Paxton 730P  
**O C C Epitome 630E**  
 O C C Dixie Erica 730W

O C C Focus 813F  
 O C C Blackbird 736K  
 O C C Rear End 751R  
 O C C Dixie Erica 776M  
 #N Bar Emulation EXT  
 #N Bar Primrose Y3051  
 #Basin Payweight 1682  
 V Reich Annie 231

Dam's Prod.	3/112
Calving Int.	377
Udder	
Docility	

#Sinclair Emulation XXP  
**W Reich Annie G127**  
 W Reich Annie 5141

BW	Adj. 205	WWR	CE	BW	WW	YW	Milk
82	668	109	8	0.1	58	98	25

Recommended for use on heifers.



LOT 74 • S R EPITOME 3710

## LOT 75 S R EPITOME 3704

BD: 03/18/23

Reg #: 20860957

#O C C Paxton 730P  
**O C C Epitome 630E**  
 O C C Dixie Erica 730W

O C C Focus 813F  
 O C C Blackbird 736K  
 O C C Rear End 751R  
 O C C Dixie Erica 776M  
 Varilek Product 2010 04  
 Zebo Queen 1072  
 FairView Rito 7075 3084  
 Reich Lady 5134

Dam's Prod.	2/111
Calving Int.	364
Udder	
Docility	

#3F Epic 4631  
**Reich Rita G516**  
 Reich Rita E518

BW	Adj. 205	WWR	CE	BW	WW	YW	Milk
88	658	107	7	0.7	60	105	22



LOT 75 • S R EPITOME 3704

## LOT 76 S R EPITOME 3734

BD: 03/27/23

Reg #: 20861104

#O C C Paxton 730P  
**O C C Epitome 630E**  
 O C C Dixie Erica 730W

O C C Focus 813F  
 O C C Blackbird 736K  
 O C C Rear End 751R  
 O C C Dixie Erica 776M  
 #B C Matrix 4132  
 #Reich Patricia 909  
 #LT Territory 5824 of EA  
 Reich Heroine 781

Dam's Prod.	10/102
Calving Int.	366
Udder	
Docility	

Reich Matrix 8113  
**Reich Heroine 2135**  
 Reich Heroine 0186

BW	Adj. 205	WWR	CE	BW	WW	YW	Milk
84	703	115	8	1.1	57	91	24



Can't make the sale? Bid from home with DVAuction's "real-time" internet bidding service! Buying online is as easy as 1, 2, 3...

1. Create an account at [www.dvauction.com](http://www.dvauction.com) under the "register" tab.
2. Apply for bidding approval by clicking on the "details" tab at least 24 hours prior to the auction - a DV representative will notify you when you are approved.
3. Tune in for the sale and make your purchases!

After the sale, contact Aaron to arrange transportation and payment. High speed internet is required for successful bidding - be sure to check the lag-time monitor in the top left corner to ensure real-time broadcasts.

**Proxy Bidding:** If you can't make time to watch the sale, register a proxy bid and DVAuction will represent your bid while you're away. Look for the "proxy bid" tab on the auction listing and fill in your maximum bids. They'll handle the rest!

**Having troubles?** During the auction, you can type a message to the operator at any time for assistance. DVAuction support can always be reached at (402) 474-5557.



LOT 77 • S R EPITOME 3743

LOT 77

**S R EPITOME 3743**

BD: 03/29/23

Reg #: 20861093

#O C C Paxton 730P  
**O C C Epitome 630E**  
 O C C Dixie Erica 730W

O C C Focus 813F  
 O C C Blackbird 736K  
 O C C Rear End 751R  
 O C C Dixie Erica 776M  
 Ellingson Scotsman 0010  
 EA Queen Dolly 7813  
 Reich Territory 1155  
 Reich Emmy 2189

Ellingson Statistics 2168  
**Reich Emmy F518**  
 Reich Emmy D275

Dam's Prod.	4/102
Calving Int.	376
Udder	
Docility	

BW	Adj. 205	WWR	CE	BW	WW	YW	Milk
90	635	104	9	0.9	54	92	23

LOT 78

**S R EPITOME 3707**

BD: 03/19/23

Reg #: 20861094

#O C C Paxton 730P  
**O C C Epitome 630E**  
 O C C Dixie Erica 730W

O C C Focus 813F  
 O C C Blackbird 736K  
 O C C Rear End 751R  
 O C C Dixie Erica 776M  
 #GDAR Game Day 449  
 Ox Bow Eola 02  
 #BC Eagle Eye 110-7  
 Reich Lady 622

Ox Bow Game Changer 4425  
**#Reich Lady D166**  
 Reich Lady 385

Dam's Prod.	6/102
Calving Int.	369
Udder	
Docility	

BW	Adj. 205	WWR	CE	BW	WW	YW	Milk
78	598	98	11	-0.8	47	80	25

Recommended for use on heifers. Pathfinder Dam.

LOT 79

**S R EPITOME 3740**

BD: 03/28/23

Reg #: 20861078

#O C C Paxton 730P  
**O C C Epitome 630E**  
 O C C Dixie Erica 730W

O C C Focus 813F  
 O C C Blackbird 736K  
 O C C Rear End 751R  
 O C C Dixie Erica 776M  
 Ellingson Scotsman 0010  
 EA Queen Dolly 7813  
 Reich 8113 Matrix 4216  
 Reich Malinda 775

Ellingson Statistics 2168  
**Reich Malinda F509**  
 Reich Malinda D286

Dam's Prod.	4/99
Calving Int.	368
Udder	
Docility	

BW	Adj. 205	WWR	CE	BW	WW	YW	Milk
92	631	103	7	1.2	48	81	23

LOT 80

**S R EPITOME 3726**

BD: 03/26/23

Reg #: 20861100

#O C C Paxton 730P  
**O C C Epitome 630E**  
 O C C Dixie Erica 730W

O C C Focus 813F  
 O C C Blackbird 736K  
 O C C Rear End 751R  
 O C C Dixie Erica 776M  
 #LT Territory 5824 of EA  
 #Reich Miss wix 708  
 #BC Eagle Eye 110-7  
 Reich Heroine 781

Reich Territory 1155  
**Reich Heroine 5161**  
 #Reich Heroine 3171

Dam's Prod.	7/99
Calving Int.	369
Udder	
Docility	

BW	Adj. 205	WWR	CE	BW	WW	YW	Milk
80	653	107	11	0	55	93	21

Recommended for use on heifers. Pathfinder Granddam WR 8/103.

The ideal Angus cow is hard to make, but when she's backed by **MATERNAL POWER™**, SHE'S HARD TO BEAT!

*Flush Brothers*

LOT **81**

**S R REVOLUTION 3138**

BD: 03/19/23 Reg #: 20842705

BW	Adj. 205	WWR	CE	BW	WW	YW	Milk
89	781	ET	2	2.6	62	94	26

LOT **82**

**S R REVOLUTION 3154**

BD: 03/23/23 Reg #: 20842707

BW	Adj. 205	WWR	CE	BW	WW	YW	Milk
99	785	ET	2	2.6	62	94	26

LOT **83**

**S R REVOLUTION 3538**

BD: 03/22/23 Reg #: 20842712

#Tehama 717 Band 876 <b>#Tehama Blackcap Revolution</b> #Tehama Blackcap E406	Tehama Band 717 #Tehama Echo B287 #Paramont Ambush 2172 Blackcap of Tehama C161 O C C Focus 813F O C C Blackbird 736K Oak Hollow 7709 of 1318 1118 Farview Lady Blue 2228	<b>Dam's Prod.</b> 5/115 <b>Calving Int.</b> 375 <b>Udder</b> 8 <b>Docility</b> 9
---	--	--

#O C C Paxton 730P  
**S R Lady Blue 118**  
#S R Lady Blue 631

BW	Adj. 205	WWR	CE	BW	WW	YW	Milk
89	710	ET	2	2.6	62	94	26

LOT **84**

**S R BEST YET 3748**

BD: 03/30/23 Reg #: 20861116

O C C Work of Art 766W <b>O C C Best Yet 766B</b> O C C Dixie Erica 817Y	#O C C Great Plains 943G O C C Dixie Erica 662J #O C C Eureka 865E O C C Dixie Erica 612H #Sitz Traveler 8180 S A V Emulous 8145 #S A V Resource 1441 Reich Elba 043	<b>Dam's Prod.</b> 6/101 <b>Calving Int.</b> 370 <b>Udder</b> <b>Docility</b>
--	---	--

#S A V Final Answer 0035  
**Reich Elba D012**  
Reich Elba 493

BW	Adj. 205	WWR	CE	BW	WW	YW	Milk
94	650	106	1	3	57	104	21

LOT **85**

**S R BEST YET 3736**

BD: 03/28/23 Reg #: 20861117

O C C Work of Art 766W <b>O C C Best Yet 766B</b> O C C Dixie Erica 817Y	#O C C Great Plains 943G O C C Dixie Erica 662J #O C C Eureka 865E O C C Dixie Erica 612H #Paramont Ambush 2172 R C Anita T Bando 918903 #S A V 8180 Traveler 004 Reich Patricia N21	<b>Dam's Prod.</b> 13/98 <b>Calving Int.</b> 363 <b>Udder</b> <b>Docility</b>
--	---	--

#B C C Bushwacker 41-93  
**Reich Patricia 938**  
Reich Patricia 502

BW	Adj. 205	WWR	CE	BW	WW	YW	Milk
96	715	117	-6	5.2	64	109	22

Granddam WR 4/109. Great Granddam 14/100. Longevity and fertility!

LOT **87**

**S R JAILBREAK 3741**

BD: 03/28/23 Reg #: 627462139

Deer Valley Growth Fund <b>HHR Jailbreak H111</b> HHR Bonnie 31A	#Basin Payweight 1682 Deer Valley Rita 36113 #Connealy Confidence 0100 HHR Bonnie 42Y Ellingson Statistics 2168 Reich Lady D158 S A V Resource 5181 Reich Blackbird 0235	<b>Dam's Prod.</b> 2/102 <b>Calving Int.</b> 367 <b>Udder</b> <b>Docility</b>
--	---	--

Reich Statistics F516  
**Reich Blackbird H524**  
Reich Blackbird F296

BW	Adj. 205	WWR	CE	BW	WW	YW	Milk
82	694	113					



*S R Lady Blue 118 • Dam of Lots 81-83*



*Tehama Blackcap Revolution • Sire of Lots 81-83*

LOT **86**

**S R BEST YET 3746**

BD: 03/30/23 Reg #: 20861111

O C C Work of Art 766W <b>O C C Best Yet 766B</b> O C C Dixie Erica 817Y	#O C C Great Plains 943G O C C Dixie Erica 662J #O C C Eureka 865E O C C Dixie Erica 612H Rito 707 of Ideal 3407 7075 Bohi Lady 1165 Reich Territory 1155 Reich Miss Maid 7119	<b>Dam's Prod.</b> 4/94 <b>Calving Int.</b> 366 <b>Udder</b> <b>Docility</b>
--	---	---

FairView Rito 7075 3084  
**Reich Rita E238**  
Reich Miss Maid 4232

BW	Adj. 205	WWR	CE	BW	WW	YW	Milk
78	650	106	5	1.1	52	91	19

Recommended for use on heifers. Granddam WR 5/101.

LOT **88**

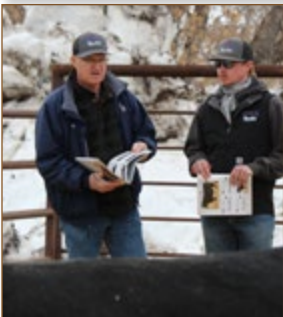
**S R JAILBREAK 3749**

BD: 03/30/23 Reg #: 627462144

Deer Valley Growth Fund <b>HHR Jailbreak H111</b> HHR Bonnie 31A	#Basin Payweight 1682 Deer Valley Rita 36113 #Connealy Confidence 0100 HHR Bonnie 42Y #C C A Emblazon 702 Reich Elimination Erica 476 Ox Bow Game Day 3323 Reich Alice 1200	<b>Dam's Prod.</b> 2/121 <b>Calving Int.</b> 365 <b>Udder</b> <b>Docility</b>
--	--	--

Reich Emblazon D013  
**Reich Alice H540**  
Reich Alice F306

BW	Adj. 205	WWR	CE	BW	WW	YW	Milk
90	740	121					



Customers and friends, you're at the **CENTER** of every decision we make.

*Thank you*  
FOR PLACING YOUR  
TRUST IN US!





WE'RE IN THIS TOGETHER!



**STROMMEN RANCH DELIVERS:**

- Two sales with two ages of bulls:  
**Spring Sale:** Yearlings & 2-Year-Olds  
**Fall Sale:** Coming 2-Year-Olds
- Free delivery within 500 miles.
- Full 90-day breeding season guarantee.
- Fertility tested; Freeze branded.
- Bulls that aren't overfed.
- Large sire groups.
- **Exclusive marketing assistance.**
- Badlands Angus Alliance Sales.
- Commercial Female Listing.
- *Your satisfaction is our top priority.*

**OUR CUSTOMERS' SUCCESS MEANS A GREAT DEAL TO US.**

**Every decision we make is weighed against one question: Will this positively impact the operations of our customers?** Our commitment to customer service is year-long, beginning with genetic selection all the way through marketing assistance for our customers' bred heifers and replacement heifer calves.

**AT STROMMEN RANCH, WE:**

- Take a balanced approach to genetic improvement - on both sides of the pedigree.
- Develop our bulls responsibly.
- Require our cowherd to excel in a no-frills environment. No creep. Ever.
- Stand behind our bulls with one of the strongest guarantees in the industry.
- Build demand for Strommen Ranch-influenced females through exclusive marketing venues such as the Badlands Angus Alliance Sales and our Commercial Female List.



**BUILDING DEMAND FOR YOUR HEIFERS**

We are proud of the herds our customers are developing with Strommen Ranch genetics and that is why **we strive to help them capture additional value for their females** through the Badlands Angus Alliance, where customers of Strommen Ranch, Talkington Angus and Best Angus have marketed more than 3,000 bred females since 2018. Many of those heifers have commanded a \$200 to \$500 per head premium over other bred heifer sales in the region! The Badlands Angus Alliance continues to be the **premier sale in western North Dakota for source and genetic verified Angus replacement females.** It demonstrates the strong demand we've helped build for genetically sourced cattle of maternal pedigree.

## **ABOUT THE 2-YEAR-OLDS**

Beginning in 2016, we started retaining a portion of our bulls to be offered as two-year-olds, due to an increase of requests from customers. This year, our sale is offering 14 outstanding two-year-old bulls aimed to meet your satisfaction. They were developed as yearlings in a similar manner as the bulls that were sold in our previous Maternal POWER™ sales.

These boys are stout, rugged, masculine and ready for heavy service in big country. We are excited to continue expanding this part of our operation, as it gives us the chance to see our genetics as they age and develop.







LOT 89 • S R RAINMAKER 2123

**LOT 89** **S R RAINMAKER 2123**

BD: 03/15/22

Reg #: 20534246

Basin Rainmaker 2704  
**Basin Rainmaker 4404**  
 Basin Joy 1036

#Basin Rainmaker P175  
 #Basin Erica 7520 BV  
 #Basin Payweight 107S  
 Basin Joy 566T  
 #O C C Emblazon 854E  
 Limestone Blackcap R128  
 #Connealy Thunder  
 S R Sky Tee Lass 431

Dam's Prod.	1/99
Calving Int.	370
Udder	9.5
Docility	10

#C C A Emblazon 702  
**S R Sky Tee Lass 025**  
 S R Sky Tee Lass 626

BW	Adj. 205	WWR	CE	BW	WW	YW	Milk
95	684	99	2	2.4	59	108	27

CCA  
 Emblazon  
 702  
 Maternal  
 Grand sire of  
 Lot 89



*Cooper and Clint had a really good year showing pigs, goats and sheep at fairs across North Dakota last summer. Cooper picked up several top showmanship awards and made a ton of new friends, in true Cooper style. Clint and his market lamb, Timmy, made it into the final drive at the North Dakota State Fair, using the wheel chair attached showing stand that Cooper designed and fabricated. The brothers plan to make it to as many shows as possible this summer.*

**LOT 90** **S R RAINMAKER 2182**

BD: 03/08/22

Reg #: 20537384

Basin Rainmaker 2704  
**Basin Rainmaker 4404**  
 Basin Joy 1036

#Basin Rainmaker P175  
 #Basin Erica 7520 BV  
 #Basin Payweight 107S  
 Basin Joy 566T  
 #Benfield Substance 8506  
 Mohnen Glyn Mawr Elba 1758  
 #Sitz 4 Aces 4551  
 S R Lady Blue 118

Dam's Prod.	1/100
Calving Int.	378
Udder	7
Docility	5

#Mohnen Substantial 272  
**S R Lady Blue 011**  
 S R Lady Blue 819

BW	Adj. 205	WWR	CE	BW	WW	YW	Milk
86	624	100	8	0.5	62	108	28



Granddam WR 4/104. Donor Great Granddam WR 5/115.



LOT 91 • S R STELLAR 2101

LOT 91

**S R STELLAR 2101**

BD: 03/13/22

Reg #: 20536912

#Mohnen Substantial 272	#Benfield Substance 8506	Dam's Prod.	3/96
<b>Sitz Stellar 726D</b>	Mohnen Glyn Mawr Elba 1758	Calving Int.	354
SITZ Pride 200B	#Connealy Final Product	Udder	7.5
	#Sitz Pride 308Y	Docility	7
#S A V Raindance 6848	#Coleman Charlo 0256		
<b>S R Bonnie Belle 997</b>	S A V Blackcap May 4136		
S R Bonnie Belle 782	#S A V Resource 1441		
	#S R Bonnie Belle 104		

BW	Adj. 205	WWR	CE	BW	WW	YW	Milk
89	679	101	4	1.7	64	118	19

LOT 92

**S R STELLAR 2717**

BD: 03/01/22

Reg #: 20838304

#Mohnen Substantial 272	#Benfield Substance 8506	Dam's Prod.	1/103
<b>Sitz Stellar 726D</b>	Mohnen Glyn Mawr Elba 1758	Calving Int.	1st calf
SITZ Pride 200B	#Connealy Final Product	Udder	
	#Sitz Pride 308Y	Docility	
Reich Statistics F516	Ellingson Statistics 2168		
<b>Reich Miss Rito H0106</b>	Reich Lady D158		
Reich Miss Rito F157	FairView Rito 7075 3084		
	Reich Annie 3119		

BW	Adj. 205	WWR	CE	BW	WW	YW	Milk
70	692	103	8	-0.7	56	101	20

Recommended for use on cows or heifers.

LOT 93

**S R STELLAR 2712**

BD: 03/02/22

Reg #: 20771703

#Mohnen Substantial 272	#Benfield Substance 8506	Dam's Prod.	1/100
<b>Sitz Stellar 726D</b>	Mohnen Glyn Mawr Elba 1758	Calving Int.	1st calf
SITZ Pride 200B	#Connealy Final Product	Udder	
	#Sitz Pride 308Y	Docility	
FairView Rito 7075 3084	Rito 707 of Ideal 3407 7075		
<b>Reich Rose H056</b>	Bohi Lady 1165		
#Reich Rose 1128	Reich Territory 995		
	Jaynee Rose 531P		

BW	Adj. 205	WWR	CE	BW	WW	YW	Milk
72	684	100	9	-1.2	54	96	19

Recommended for use on cows or heifers.

Thank you to Kayla Weinzierl, who has earned the Strommen Ranch employee-of-the-month award for 18 months in a row! Kayla brings an outstanding work ethic to every day and cares for our livestock as if they were her own. She's got a good mind for cattle and is always willing to pitch-in wherever she's needed, whether that's the working pens, the AI corrals or editing bull videos into the wee hours of the morning.



"I RECENTLY BOUGHT A TOILET BRUSH...  
LONG STORY SHORT,  
I'M GOING BACK TO TOILET PAPER."  
-ANONYMOUS



Sitz Stellar 726D • Sire of Lots 94-95



Sinclair Emulation XXP • Maternal Great Grand sire of Lot 95

**LOT 94 S R STELLAR 211**

BD: 03/06/22 Reg #: 20536962

#Mohnen Substantial 272 <b>Sitz Stellar 726D</b> SITZ Pride 200B	#Benfield Substance 8506 Mohnen Glyn Mawr Elba 1758 #Connealy Final Product #Sitz Pride 308Y	Dam's Prod. 8/95
#B C C Bushwacker 41-93 <b>S R Emma E 4210</b> Sitz Emma E 2552	#Paramont Ambush 2172 R C Anita T Bando 918903 #G D A R Traveler 044 Sitz Emma E 447	Calving Int. 364
		Udder 7
		Dolcility 8

BW	Adj. 205	WWR	CE	BW	WW	YW	Milk
71	685	ET	3	1.4	57	96	18

**LOT 95 S R STELLAR 2763**

BD: 03/15/22 Reg #: 20838303

#Mohnen Substantial 272 <b>Sitz Stellar 726D</b> SITZ Pride 200B	#Benfield Substance 8506 Mohnen Glyn Mawr Elba 1758 #Connealy Final Product #Sitz Pride 308Y	Dam's Prod. 2/105
Reich Emulation XXP E164 <b>Reich Lady H044</b> Reich Lady 277	#Sinclair Emulation XXP BT Missey 265N #Connealy Thunder Reich Lady 622	Calving Int. 385
		Udder
		Dolcility

BW	Adj. 205	WWR	CE	BW	WW	YW	Milk
72	650	97	5	0	50	92	19

Recommended for use on cows or heifers.

**LOT 96 S R SILVERADO 2722**

BD: 03/11/22 Reg #: 20553964

S A V Rainfall 6846 <b>S R Silverado 083</b> #S R Dorothy Ideal 604	#Coleman Charlo 0256 S A V Blackcap May 4136 #Connealy Capitalist 028 S R Dorothy Ideal 471 #GDAR Game Day 449	Dam's Prod. 6/103
Ox Bow Game Day 3323 <b>Reich Blackcap Lady D269</b> Reich Blackcap Lady 326	Ox Bow Lucy 433 #Connealy Thunder Reich Blackcap Lady 1217	Calving Int. 368
		Udder
		Dolcility

BW	Adj. 205	WWR	CE	BW	WW	YW	Milk
82	679	103	7	1.8	60	108	26

**LOT 97 S R SILVERADO 2729**

BD: 03/13/22 Reg #: 20843257

S A V Rainfall 6846 <b>S R Silverado 083</b> #S R Dorothy Ideal 604	#Coleman Charlo 0256 S A V Blackcap May 4136 #Connealy Capitalist 028 S R Dorothy Ideal 471 #Sitz Traveler 8180	Dam's Prod. 9/94
#S A V Final Answer 0035 <b>Reich Fawn 3113</b> Reich Fawn 0204	S A V Emulous 8145 S A V Alliance 6850 Jaynbee Fawn 518P	Calving Int. 367
		Udder
		Dolcility

BW	Adj. 205	WWR	CE	BW	WW	YW	Milk
80	631	96	8	0.6	55	99	21



LOT 96 • S R SILVERADO 2722



S R Silverado 083 • Sire of Lots 96-97





**LOT 98 • S R REVOLVER 2723**

**LOT 98**

**S R REVOLVER 2723**

BD: 03/12/22

Reg #: 20553965

Rito 707 of Ideal 3407 7075 #R R Rito 707  
**FairView Rito 7075 3084** Ideal 3407 of 1418 076  
 Bohi Lady 1165 #N Bar Emulation EXT  
 Reich Territory 1155 Ideal 4465 of 6807 4286  
**Reich Blackcap Lady D215** #LT Territory 5824 of EA  
 Reich Blackcap Lady 1120 #Reich Miss wix 708  
 Reich Matrix 8113  
 #Reich Blackcap Lady 965

Dam's Prod.	5/94
Calving Int.	368
Udder	
Dolcility	

BW	Adj. 205	WWR	CE	BW	WW	YW	Milk
78	634	96	13	-2.1	40	70	18

**Recommended for use on cows or heifers.** Pathfinder Great Granddam.



**LOT 98 • S R REVOLVER 2723**



*Reich Rachel 588  
Maternal  
Granddam of  
Lot 99*



*S R Rachel 703  
Dam of Lot 99*



LOT 100 • S R LANDMARK 284

**LOT 100 S R LANDMARK 284**

BD: 03/12/22 Reg #: 20534320

S A V Territory 7225  
**S A V Landmark 9148**  
 S A V Blackcap May 1420  
 #Sinclair Emulation XXP  
**S R Beauty 827**  
 S R Beauty 430

#S A V Resource 1441  
 S A V Emblynette 3293  
 Rito 707 of Ideal 3407 7075  
 S A V Blackcap May 4136  
 #N Bar Emulation EXT  
 #N Bar Primrose Y3051  
 #S A V Resource 1441  
 S R Beauty 706

Dam's Prod.	3/95
Calving Int.	358
Udder	7.5
Docility	10

BW	Adj. 205	WWR	CE	BW	WW	YW	Milk
99	596	88	-4	3.7	61	111	13

**LOT 101 S R LANDMARK 2191**

BD: 04/05/22 Reg #: 20534344

S A V Territory 7225  
**S A V Landmark 9148**  
 S A V Blackcap May 1420  
 #S A V Resource 1441  
**S R Beauty 560**  
 S R Beauty 706

#S A V Resource 1441  
 S A V Emblynette 3293  
 Rito 707 of Ideal 3407 7075  
 S A V Blackcap May 4136  
 Rito 707 of Ideal 3407 7075  
 S A V Blackcap May 4136  
 #Leachman Right Time  
 M H Beauty 807

Dam's Prod.	6/91
Calving Int.	365
Udder	8.5
Docility	9

BW	Adj. 205	WWR	CE	BW	WW	YW	Milk
92	604	90	0	2.5	60	109	11

**LOT 102 S R COMMERCIAL 2899**

BD: 0415/22 Reg #:

**Multi-Sire**  
 Sitz 4 Aces 4551  
**S R Lady Blue 899**  
 S R Lady Blue 118

Jauer 353 Traveler 589 27  
 Sitz Pride 2561  
 O C C Paxton 730P  
 S R Lady Blue 631

Dam's Prod.	3/103
Calving Int.	384
Udder	7
Docility	8

BW	Adj. 205	WWR	CE	BW	WW	YW	Milk
84	644	110					



LOT 99 • S R TORQUE 2196

**LOT 99 S R TORQUE 2196**

BD: 04/18/22 Reg #: 20532388

#S A V 004 Density 4336  
**Bruin Torque 5261**  
 Falcon Blackbird 6071  
 #Connealy Reflection  
**#S R Rachel 703**  
 Reich Rachel 588

#S A V 8180 Traveler 004  
 S A V May 7238  
 #Connealy Dateline  
 #Vermilion Blackbird 5044  
 #Bon View New Design 878  
 Happy Grill of Conanga 6260  
 #S A V Resource 1441  
 #Reich Eota Lass 798

Dam's Prod.	5/106
Calving Int.	371
Udder	9
Docility	10

BW	Adj. 205	WWR	CE	BW	WW	YW	Milk
89	601	89	5	2.1	52	101	25

Pathfinder Dam WR 5/106. Granddam WR 6/104. Pathfinder Great Granddam.



# DATA COLLECTION:

There are many viewpoints on how to correctly collect data and turn it into something useful for customers.

**Just because a breeder 'collects data' for maternal traits, doesn't make his or her cowherd inherently maternal.** Merely 'collecting the data' does not make every female on a ranch genetically superior for maternal traits as some breeders would like to suggest. Likewise, data collection for terminal traits (marbling, ribeye and fat) or performance traits (weaning and yearling weights) does not make cattle genetically superior in those areas.

We believe data collection is important, but, even more important, is how that data is used in our herd - and in your herds. **This is why we give our customers access to meaningful data you can use to make informed decisions.** Making informed decisions is the only way meaningful genetic progress is made.

We collect - and provide access to - data on traits our customers have requested. Let's explore what we collect and why we give you access to it:

# HOW DO WE USE IT AT STROMMEN RANCH?



**WEANING RATIO:** Why don't more seedstock suppliers provide ratios? For every bull above 100 (which is average), there is 1 below 100. Many seedstock suppliers don't show ratios because they don't want you to see how many below-average bulls they are selling. We think it's extremely important to be up front and honest and provide weaning ratios on every bull to show our customers how they rank within their contemporary group.

**CALVING INTERVAL:** An indicator of the most profitable trait in the beef business—Fertility. We believe this is the best measure of a cow's fertility and longevity. A calving-interval combined with annual production shows that a cow has had a calf every year and on schedule. In my experience working and traveling for Genex for many years, I was able to see, first-hand, countless purebred females that didn't pay their way. They were open or didn't raise a calf and rolled into the next year getting a free pass for sub-par fertility or poor mothering ability. There is no room for a dry cow at Strommen Ranch. If they are open or dry, they are culled. Our donor cows are also expected to calve annually, which isn't common practice. We don't believe in a free pass.

**DISPOSITION SCORE:** We are one of the only breeders that provides a disposition score for the mothers to our bulls. This score is taken the day they calve on a scale from 1-10. 10 denotes perfect mothering ability in all facets from getting the calf pushed out, to getting the calf licked off and up to nurse, then standing calmly and quietly for that first suckle. We don't make any excuses for cows that can't get their job done. We don't have 15 employees here to watch every cow at every minute. We expect them to absolutely do it on their own and in a manner that is safe for the cow, the calf and us while we weigh and tag the calves.

**UDDER SCORE:** We also provide an udder score. Udder quality is very important to us. We like a beautiful Angus female with a feminine front, big bodied with excellent feet and a superb udder. Our udder score is collected the day the calf is born, which is the day it matters the most. We score udders from 1-10 with a 10 being level-uddered with excellent forward attachment, small teat size placed evenly apart and equal quarters with definite distinction between each quarter. We don't tolerate swing-bags, large teats, tilted or uneven quarters. We also don't want those huge bags that are so low

to the ground that it takes a calf 4-6 hours to figure it out. I've seen it and don't want anything to do with it. Milking ability and volume is good, to a point, but it is no longer desirable when a calf can't attach and nurse or mastitis sets in because of the volume. If we have to get a cow in to touch her udder, she is automatically culled and her calf is immediately pulled off. We don't have the time and know our customers don't either.

**FOOT SCORES:** This is a score you won't find here. I think foot scoring is laughable. They are either good or gone. Period. End of story. And, let me tell you, the EPD's don't tell the story. It's nearly impossible for us to find an outside bull to use because we are that skeptical of others' ability to accurately collect and report foot scores. This problem is exacerbated by those breeders who are rapidly turning generations on the next latest-and-greatest sire before knowing or understanding what they have on the ground today. We aren't perfect for foot quality, no breeder is. There is a difference though! If a breeder tells you they don't have any issues with foot quality, run away fast. We are doing our due diligence to select cattle that have excellent foot quality and we will not compromise our standards.



# BRUIN TORQUE 5261

**AAA #: 18248293** • There are three things Torque does better than any bull we have ever used – he adds body length, stands on a tremendous foot and improves fertility and udder quality in his daughters. He works great on those big-bodied, easy-fleshing females that need spine length and extension up front. He improves disposition and foot quality, all while maintaining maternal function and power.

His sons consistently sell at the top of our sales and we truly believe the best is yet to come with the 60+ Torque daughters we've retained in our herd.





**AAA #: 19932195** • This moderate-framed, tank of a bull is backed by generations of Maternal POWER™ His productive and fertile Pathfinder dam has settled to A.I. every year and posts BWR 6/93 and WWR 6/106. For docile, good-footed, moderated sized cows that wean a high percentage of their body weight, look no further than **SILVERADO!**



# SR SILVERADO 083

Born & raised at Strommen Ranch. Owned by Genex, CRI.



# SAV EASY STREET 2289

**AAA #: 20473600** • We acquired SAV Easy Street 2289 with our friends at Select Sires Argentina & Juan Debernardi-Carne. We thought he was the true highlight calving ease bull of the 2023 Schaff Angus Valley sale.

Easy Street's beautifully uddered President dam has a birth ratio of 2/87. His maternal granddam has a birth ratio of 10/93 and his great granddam has a birth ratio of 10/95. His second and third dams both produced beyond 12 years of age, proving not only their fertility, but their longevity, as well. This makes us very confident in Easy Street's potential to be a long-term calving-ease bull that will leave behind beautiful, productive, long-lasting females.

We expect this gentle-disposition bull to make beautiful females in a calving-ease package.



**For semen on these bulls or to book custom AI services, contact us!**  
 Aaron & Sheyna Strommen • Solen, N.D. • (701) 290-7983 • [f](#) [t](#) [i](#)

[www.StrommenRanch.com](http://www.StrommenRanch.com)

THESE BULLS AND FEMALES ARE THE **BACKBONE OF OUR COWHERD!**



TORQUE



EMBLAZON 702



RAINFALL



RESOURCE



CAPITALIST



XXP



EMBLAZON 854E



PAXTON



BLACKCAP REVOLUTION



RIGHT TIME



EXT



THUNDER



BC ROBUST



RAINMAKER 4404



GLORY DAYS

IT'S NOT HARD TO  
**MAKE DECISIONS**  
WHEN YOU KNOW WHAT  
YOUR *values* ARE.

WE VALUE **OUR CUSTOMERS.** We know that our success is wholly dependent on your success. This is why we are committed to raising the type of Angus seedstock that will have a lasting, positive impact on your bottom line, and why we will continue to build a market for Maternal POWER™ females.

WE VALUE **INTEGRITY IN BUSINESS.** It is why we offer such a thorough bull guarantee. It's simple. We want you to have a bull that does his job and lasts for years. Our guarantee tells you we still have 'skin in the game,' after the sale and that we stand behind our bulls. We feel blessed that our customers also embody this same level of integrity and do their best to protect their investment in their Strommen Ranch bulls.

# REPRESENTING 20 YEARS OF BREEDING FOR MATERNAL GENETICS



S R LADY BLUE 118



S R CLOVA PRIDE 315



S R LADY BLUE 585



S R BARBARAMERE NELL 412



S R EMMA E 695



S R RACHEL 703



S R RACHEL 8110



S R DOROTHY IDEAL 6112



S R TRAVETT 666



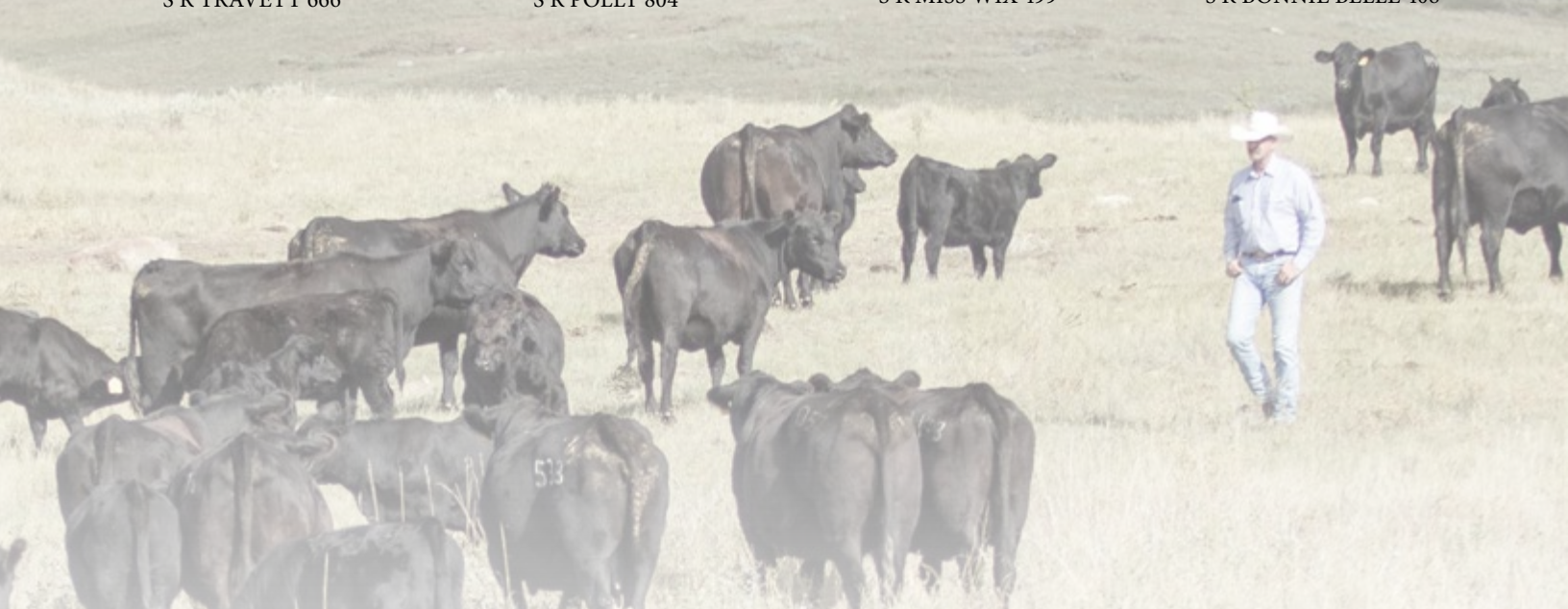
S R POLLY 804



S R MISS WIX 499



S R BONNIE BELLE 408



WE VALUE **QUALITY**. Bulls that make our February and December sales are the top-cut of the calf crop and have been retained specifically for these sales.

Strommen Ranch calves grow out on grass. We DO NOT creep feed or use lick tubs. We choose to run our seedstock operation like a no-nonsense commercial operation. We want your calves to perform in your environment – that’s why we ask our bulls and females to shine in a similar one. Our cows consistently improve weaning weights, while increasing the percentage of cows that re-breed in the first 21 days, maintaining mature cow size and placing downward pressure on our input costs. We are continually asking our cattle to do more with less.

WE VALUE **MATERNAL POWER™**. Strommen Ranch cows must calve annually and wean a calf that is a high percentage of its dam’s bodyweight. They must also possess the basic phenotypic traits to cover country, breed on time, have the smarts and mothering ability to do it on their own, all the while performing under the conditions that Mother Nature has dealt us. We select for fertility, longevity, sound structure and realistic performance in the cowherd.

**Cattle that breed early in the cycle, are structurally sound and can raise big calves efficiently in a practical environment with minimal inputs are the kind of cattle we produce and believe will have a positive impact on your bottomline now and into the future.**



**Aaron & Sheyna Strommen**  
 1550 70th St Box 7  
 Solen, ND 58570  
[www.StrommenRanch.com](http://www.StrommenRanch.com)

**Time Sensitive Material  
 Please Deliver Immediately!**



*We invite you to join us for the*  
**MATERNAL POWER™**  
**ANGUS BULL SALE**  
 3 PM · FEB. 17, 2024 · SOLEN, N.D.

**YOU'RE ALWAYS  
 WELCOME AT  
 STROMMEN RANCH!**

Join us on a virtual tour  
 simply by scanning this  
 QR code with your smart  
 phone's camera app.



*Selling* **100** Yearling &  
 2-Yr Old  
 ANGUS Bulls  
 Many full, 3/4 & 1/2 brothers sell!



**Aaron & Sheyna Strommen**  
 Solen, N.D. • (701) 290-7983  
[strommen@westriv.com](mailto:strommen@westriv.com)

**VISITORS ALWAYS WELCOME!**  
 Visit us online and follow us  
 on social media for updates.

**www.StrommenRanch.com**