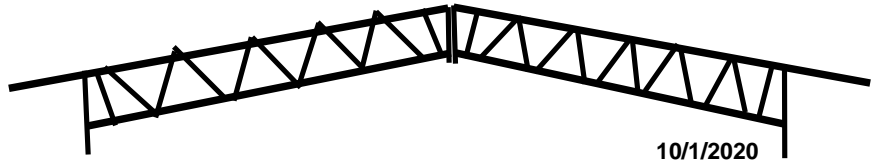




Metal Roofing Wholesalers LLC
 Tel: (865) 379-7777 • Fax 865-982-4222
 1170 Topside Road • Louisville, TN 37777
www.MetalRoofingWholesalers.com



Steel Truss Price Sheet



10/1/2020

Standard Gable Steel Trusses

Our Gable Trusses come in sizes from 10' - 80' wide. The standard pitch is 4/12 we can custom build steeper if needed.

Length	10' - 18' Steel Truss		\$10.50	Lin. Ft.	Chord Size	Typical
				Each		
20	Gable Steel Truss	4/12 Pitch		\$200.00	1.5" X 1.5"	10' Spacing
22	Gable Steel Truss	4/12 Pitch		\$205.00	1.5" X 1.5"	10' Spacing
24	Gable Steel Truss	4/12 Pitch		\$219.00	1.5" X 1.5"	10' Spacing
26	Gable Steel Truss	4/12 Pitch		\$245.00	1.5" X 1.5"	10' Spacing
28	Gable Steel Truss	4/12 Pitch		\$265.00	1.5" X 1.5"	10' Spacing
30	Gable Steel Truss	4/12 Pitch		\$279.00	1.5" X 1.5"	10' Spacing
32	Gable Steel Truss	4/12 Pitch		\$305.00	1.5" X 1.5"	10' Spacing
34	Gable Steel Truss	4/12 Pitch		\$325.00	1.5" X 1.5"	10' Spacing
36	Gable Steel Truss	4/12 Pitch		\$345.00	1.5" X 1.5"	10' Spacing
38	Gable Steel Truss	4/12 Pitch		\$365.00	1.5" X 1.5"	10' Spacing
40	Gable Steel Truss	4/12 Pitch		\$385.00	1.5" X 1.5"	10' Spacing
40	Gable Steel Truss	4/12 Pitch		\$430.00	2" X 2"	12' Spacing
42	Gable Steel Truss	4/12 Pitch		\$452.00	2" X 2"	12' Spacing
44	Gable Steel Truss	4/12 Pitch		\$475.00	2" X 2"	12' Spacing
46	Gable Steel Truss	4/12 Pitch		\$506.00	2" X 2"	10' Spacing
48	Gable Steel Truss	4/12 Pitch		\$528.00	2" X 2"	10' Spacing
48	Gable Steel Truss	4/12 Pitch		\$600.00	2" X 2" Part Dbl	12' Spacing
50	Gable Steel Truss	4/12 Pitch		\$550.00	2" X 2"	10' Spacing
50	Gable Steel Truss	4/12 Pitch		\$625.00	2" X 2" Part Dbl	12' Spacing
60	Gable Steel Truss	4/12 Pitch		\$875.00	1.5" X 1.5" Double Chord	18" Deep
60	Gable Steel Truss	4/12 Pitch		\$1,050.00	2" X 2" Double Chord	18" Deep
65	Gable Steel Truss	4/12 Pitch		\$1,425.00	2" X 2" Double Chord	24" Deep
70	Gable Steel Truss	4/12 Pitch		\$1,650.00	2" X 2" Double Chord	24" Deep
80	Gable Steel Truss	4/12 Pitch		\$1,895.00	2" X 2" Double Chord	24" Deep



Trusses have pre-welded cups 2' on center to hold 2X6 Lumber purlins used to fasten metal panels to.
 Metal Roofing Wholesalers / Tel:865-379-7777 / Fax 865-982-4222 / Price Subject to change without prior notice



Metal Roofing Wholesalers LLC
 Tel: (865) 379-7777 • Fax 865-982-4222
 1170 Topside Road • Louisville, TN 37777
www.MetalRoofingWholesalers.com



Steel Truss Price Sheet

10/1/2020

Lean- To Shed Trusses 1/12 or 2/12 pitch

Our lean-To Trusses come in sizes from 4' - 40' Long. The standard pitch is 1/12 or 2/12 Pitch

Lean- To Shed Trusses will typically mount to the side of an existing building post.

Length		Each	Chord Size	
4' - 20'	Lean-To Shed Truss	\$10.00	1.5" X 1.5"	Single Chorded
21' - 30'	Lean-To Shed Truss	\$12.00	2" X 2"	Single Chorded
21' - 30'	Lean-To Shed Truss	\$15.50	1.5" X 1.5"	Double Chorded
30' - 40'	Lean-To Shed Truss	\$17.50	2" X 2"	Double Chorded

Free Standing Shed Trusses 1/12 or 2/12 pitch

Our Free Standing Shed Trusses come in sizes from 10' - 40' Long. The standard pitch is 1/12 or 2/12 Pitch

Free Standing Shed Trusses will usually have a overhang on each side and there will a post seat on each side of the truss.

Length		Each	Chord Size	
4' - 20'	Free Standing Shed Truss	\$10.00	1.5" X 1.5"	Single Chorded
21' - 30'	Free Standing Shed Truss	\$12.00	2" X 2"	Single Chorded
21' - 30'	Free Standing Shed Truss	\$15.50	1.5" X 1.5"	Double Chorded
30' - 40'	Free Standing Shed Truss	\$17.50	2" X 2"	Double Chorded

Bar Joist - Header Truss

Our bar Joist is a steel beam that takes place of a post. This will enable you to have up to a 30' opening between post.

30' Max	Bar Joist Header Truss	\$15.00	1.5" X 1.5"	Double Chorded
30' Max	Bar Joist Header Truss	\$17.00	2" X 2"	Double Chorded

Lean- To Shed Trusses



Free Standing Shed Trusses



Bar Joist-Header Truss



Trusses have pre-welded cups 2' on center to hold 2X6 Lumber purlins used to fasten metal panels to.
 Metal Roofing Wholesalers / Tel:865-379-7777 / Fax 865-982-4222 / Price Subject to change without prior notice