

Rabbit Anti-CD8 [SP16]: RM0239, RM0239RTU7

Intended Use: For Research Use Only

Description: CD8 molecule consists of two chains, termed α and β chain, which are expressed as a disulphide-linked α/β heterodimer or as an α/α homodimer on T cell subset, thymocytes and NK cells. The majority of CD8+ T cells express CD8 as α/β heterodimer. CD8 functions as a coreceptor in concert with TCR for binding the MHC class I/peptide complex. The HIV-2 envelope glycoprotein binds CD8 α chain (but not β chain).

Specifications:

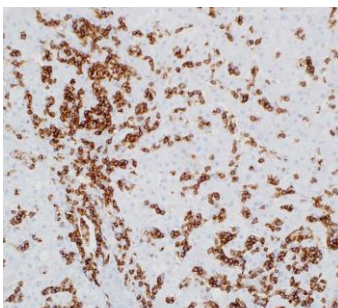
Clone: SP16
 Source: Rabbit
 Isotype: IgG
 Reactivity: Human
 Localization: Membrane
 Formulation: Antibody in PBS pH7.4, containing BSA and $\leq 0.09\%$ sodium azide (NaN₃).
 Storage: Store at 2°- 8°C
 Applications: IHC
 Package:

Description	Catalog No.	Size
CD8 Concentrated	RM0239	1 ml
CD8 Prediluted	RM0239RTU7	7 ml

IHC Procedure*:

Positive Control Tissue: Tonsil
 Concentrated Dilution: 25-50
 Pretreatment: Citrate pH6.0, 15 minutes using Pressure Cooker, or 30-60 minutes using water bath at 95°-99°C
 Incubation Time and Temp: 30-60 minutes @ RT
 Detection: Refer to the detection system manual

* Result should be confirmed by an established diagnostic procedure.



FFPE human liver stained with anti-CD8 using DAB

References:

1. Cytoplasmic expression of C-MYC protein is associated with risk stratification of mantle cell lymphoma. Gong Y, et al. PeerJ 5:e3457, 2017.
2. Molecular Subtypes of Clear Cell Renal Cell Carcinoma Are Associated With Outcome During Pazopanib Therapy in the Metastatic Setting. Verbiest A, et al. Clin Genitourin Cancer N/A:N/A, 2017.
3. Prognostic Implication of M2 Macrophages Are Determined by the Proportional Balance of Tumor Associated Macrophages and Tumor Infiltrating Lymphocytes in Microsatellite-Unstable Gastric Carcinoma. Kim KJ, PLoS One. Dec 29;10(12):e0144192, 2015.

Doc. 100-RM0239
Rev. B

Orders: customercare@medaysis.com Support: techsupport@medaysis.com Tel: 877-524-9167 www.medaysis.com

© Medaysis Company