

GCE96
SINGLE STAGE GAS FURNACE

HIGH-EFFICIENCY, MULTI-SPEED ECM

UP TO 96% AFUE PERFORMANCE

Downflow/Horizontal



Air Conditioning & Heating



Thank goodness
for Goodman.®



At Goodman, we believe in American dependability. Units are designed, engineered and assembled in the U.S.A.





Goodman is one of the biggest names in home heating and energy-efficient home comfort. That's because Goodman lives up to its name in a big way, with time-tested energy-efficient technology, highly-durable materials and spot-on manufacturing. So, no matter where you live or whether your home is small or large, Goodman probably has a gas furnace to help keep your home warm and comfortable.

Goodman is a brand you can really warm up to.

The best gas furnace is the kind you don't have to think or worry about. It comes on the moment you need it and then runs quietly and efficiently all winter long as needed. The **Goodman** GCES96 is loaded with features designed to provide outstanding performance for years to come. We use advanced techniques and materials so you know the cozy, even heat you feel in every corner of your home is an energy-efficient warming trend that's designed to stay for many years.

Don't high utility bills make you hot under the collar?

High heating bills burn us up, too. Our complete line of gas furnaces are priced to help add comfort to your budget from a local independent dealer. And that's only the beginning. We want you to smile every time you open your utility bill, so we design into our units proven energy-efficient technology.

Taking pride in our company heritage.

Goodman brand heating and cooling systems are designed to provide refreshingly affordable and energy-efficient indoor comfort solutions using advanced technology. But the company ultimately adheres to some old-fashioned values too. Goodman believes in the integrity of the American worker. That's why **Goodman** brand heating and cooling systems are designed, engineered and assembled in the United States.

Experience reliable indoor comfort for everyone in your home winter after winter after winter.





A LOT GOES INTO EVERY GOODMAN BRAND GCES96 GAS FURNACE

The art of precision

Aluminized Steel Tubular Primary Heat Exchanger – Distinctive tubular aluminized steel construction formed using wrinkle-bend technology results in an extremely durable heat exchanger. Paired with a stainless-steel secondary heat exchanger, this combination provides reliability, durability and efficiency.

Efficient and Quiet Multi-Speed ECM Circulator Motor – Provides quiet system startup and shutdown with highly-efficient performance.

Goodman gas furnaces simply work the way they're supposed to, making each one a thing of beauty.

Single-Stage Gas Valve – Reduces energy needed during moderate demand to deliver outstanding comfort and efficiency as compared to natural draft furnaces.

Quiet, Single-Speed, Induced-Draft Blower – Provides precise control and enhanced energy-efficient performance as compared to a natural draft furnace.

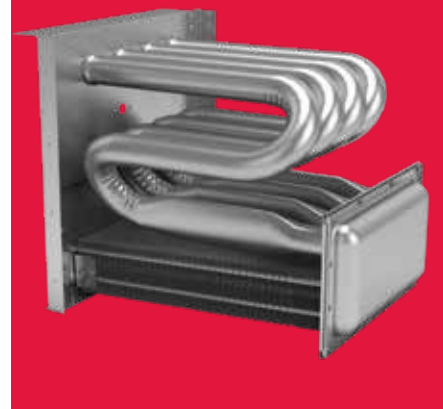
Durable Silicon Nitride Igniter – Eliminates the need for an energy-wasting pilot light.

Self-Diagnostic Control Board – Continuously monitors the system for consistent, reliable operation, stores last diagnostic codes in memory and indicates condition through a dual 7-segment display for quick troubleshooting.

Thermally-Insulated Cabinet – The fully insulated cabinet means air leakage of less than 2% to maximize the heat transfer efficiency and lower blower noise.

COMPONENT UPGRADE OFFERS BETTER PERFORMANCE

The aluminized steel, tubular primary heat exchanger featured in Goodman brand gas furnaces is likely the most essential component in a gas furnace's performance. This distinctive heat exchanger employs wrinkle-bend technology which was developed to deliver extraordinary durability and long-term reliability.



When your current furnace breaks, it's good to know that your local, independent **Goodman** brand contractor has financing options available to help defray what might be considered an emergency purchase for your home.

Thank goodness for Goodman.®



COUNT ON OUTSTANDING LIMITED WARRANTY* PROTECTION

10 YEAR **UNIT REPLACEMENT LIMITED WARRANTY***

LIFETIME **HEAT EXCHANGER LIMITED WARRANTY***

10 YEAR **PARTS LIMITED WARRANTY***

* Complete warranty details available from your local dealer or at www.goodmanmfg.com. To receive the 10 Year Unit Replacement Limited Warranty, Lifetime Heat Exchanger Limited Warranty (good for as long as you own your home) and 10-Year Parts Limited Warranty, online registration must be completed within 60 days of installation. Online registration is not required in California or Quebec.

EXTENDED SERVICE PLANS AVAILABLE

For even greater peace of mind, ask your dealer or visit our website at www.goodmanmfg.com for more details about AsureSM, an affordable Parts and/or Labor Extended Service Plan for your entire **Goodman** brand HVAC system.

AsureSM
EXTENDED SERVICE PLAN

Ask your dealer for full details.

PERFORMANCE

UP TO
96%
AFUE

The 96% AFUE rating on this gas furnace means that 96 cents of every energy dollar warms your home. The Department of Energy (DOE) established the AFUE (Annual Fuel Utilization Efficiency) system to calculate the annual operating cost of residential gas furnaces.

Independent, dependable, courteous, prompt, honest, highly-skilled and respectful of you and your home. That's why all the time homeowners say,

"These guys are good – really good."



Why does Goodman have such a large fan base?

Many of your neighbors may have discovered that a reliable and energy-efficient home comfort system doesn't have to cost a fortune. **Goodman** brand whole-house systems feature many of the latest and greatest money-saving technology benefits that we can offer. They are designed and engineered to run quietly and pretty much worry-free.

ONCE YOU CHOOSE THE **GOODMAN BRAND**,
YOU'LL PROBABLY BE A FAN FOR LIFE.



YOU COULD BECOME ONE, TOO!

Just go to
www.goodmanmfg.com/reviews

and find out why you'll say
"Thank goodness for Goodman®."

GOODMAN IS SOCIAL!



Like us on **Facebook!**
facebook.com/GoodmanMfg



Follow us on **Twitter!**
twitter.com/Goodman_Mfg

ComfortBridge™
technology

HVAC Communicating Control

ComfortBridge technology offers off-the-wall smart communicating systems capable of customizing energy-efficient performance, use of any single-stage thermostat, and more.



www.comfortbridge.com

CLEAN COMFORT®
INDOOR AIR ESSENTIALS

Pure. Clean. Air.

Indoor comfort in your home is about more than just adjusting the temperature on the thermostat. Many homeowners overlook the need for necessary components and systems that can improve the indoor air you breathe.



www.cleancomfort.com



GOODMAN – A MEMBER OF DAIKIN GROUP

Daikin Industries, Ltd. (DIL) is a global Fortune 1000 company. It is a worldwide leader for residential and commercial HVAC. DIL is engaged primarily in the development, manufacture, sale, and aftermarket support of heating, ventilation, air conditioning and refrigeration equipment, refrigerants and other chemicals, as well as oil hydraulic products. DIL is headquartered in Osaka, Japan.

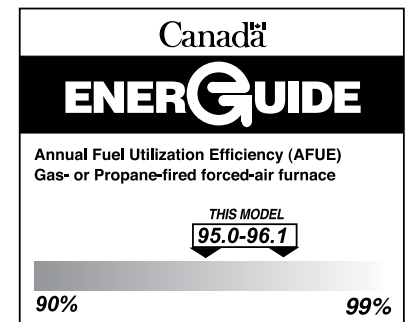
The company provides innovative, premium quality indoor climate management solutions to meet the changing needs of residential, commercial, and industrial customers.

Can no longer be installed in California's South Coast Air Quality Management District (SCAQMD) on or after October 1, 2019.



Additional Information

Before purchasing this appliance, read important information about its estimated annual energy consumption, yearly operating cost, or energy efficiency rating that is available from your retailer.



Goodman®

a member of **DAIKIN** group

Our continuing commitment to quality products may mean a change in specifications without notice. © 2019 Goodman Manufacturing Company, L.P. Houston, Texas • USA
www.goodmanmfg.com