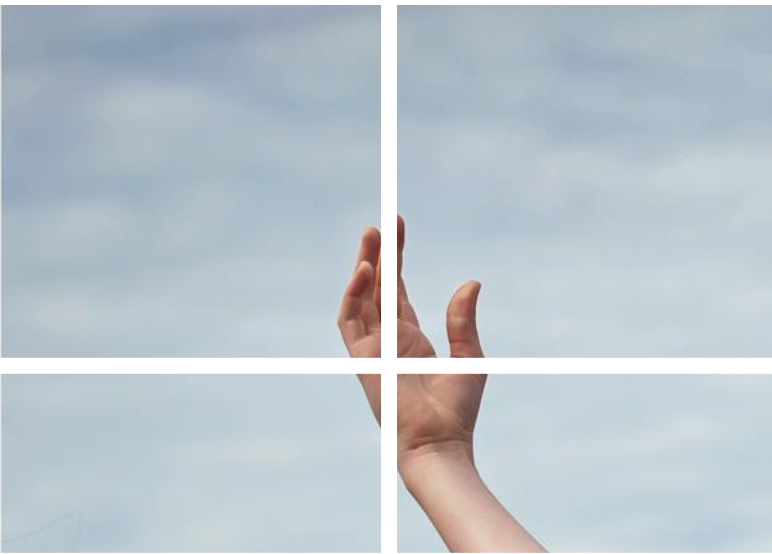


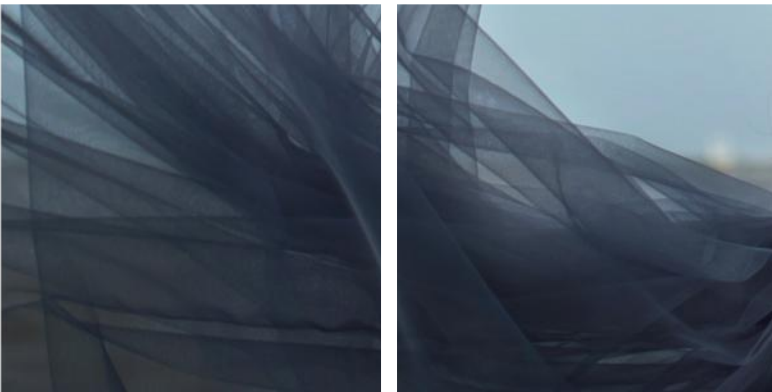
GRADE 6 - ADULT



DANCE ENDEAVORS



2019-2020
SEASON



REGISTRATION OPENS JUNE 25TH AT 7PM



10820 Nesbitt Avenue South
Bloomington, MN 55437
952-212-4456
www.danceendeavors.com
info@danceendeavors.com

More Than Just Great Dancing!
Affiliated Dance Studios



CLASS SCHEDULE



Grade 6-9

Monday	3:45-4:45p	Gr 6-12 Danceline
Monday	4:45-5:45p	Gr 6-12 Lyrical
Monday	5:45-6:45p	Ballet
Monday	6:45-7:15p	Beginning Pointe*
Monday	7:15-8:15p	Jazz
Tuesday	3:00-4:00p	Gr 6-12 Skills/Conditioning [#]
Tuesday	4:00-5:00p	Ballet
Tuesday	5:00-5:30p	Intermediate Pointe**
Tuesday	5:30-6:30p	Tap
Tuesday	6:30-7:30p	Jazz
Tuesday	7:30-8:30p	Gr 6-12 Modern
Tuesday	7:45-8:30p	Gr 6-12 Acro
Tuesday	8:30-9:15p	Gr 6-12 Lyrical
Wednesday	4:00-5:00p	Contemporary
Wednesday	5:00-6:00p	Lyrical
Wednesday	6:00-7:00p	Jazz
Wednesday	7:00-8:00p	Hip Hop
Wednesday	8:00-8:45p	Gr 6-12 POM Dance Squad
Thursday	4:00-5:00p	Gr 6-12 Ballet
Thursday	5:00-5:30p	Gr 6-12 Intermediate Pointe**
Thursday	5:30-6:30p	Tap
Thursday	7:30-8:15p	Gr 6-12 Skills/Conditioning [#]
Saturday	9:15-10:15a	Gr 6-12 Contemporary
Saturday	10:15-11:45a	Gr 6-12 Ballet
Saturday	11:45-12:45p	Gr 6-12 Int II/Adv/Variations ⁺⁺
Saturday	12:45-1:45p	Gr 6-12 Skills/Conditioning [#]

Grade 8-12

Monday	3:45-4:45p	Gr 6-12 Danceline
Monday	4:45-5:45p	Gr 6-12 Lyrical
Monday	5:45-6:45p	Jazz
Monday	6:45-8:00p	Ballet
Monday	8:00-8:30p	Intermediate Pointe**
Tuesday	3:00-4:00p	Gr 6-12 Skills/Conditioning [#]
Tuesday	4:30-5:30p	Tap
Thursday	4:00-5:00p	Gr 6-12 Ballet
Thursday	5:00-5:30p	Gr 6-12 Intermediate Pointe**
Tuesday	7:30-8:30p	Gr 6-12 Modern
Tuesday	7:45-8:30p	Gr 6-12 Acro
Tuesday	8:30-9:15p	Gr 6-12 Lyrical
Wednesday	4:00-5:00p	Contemporary
Wednesday	5:00-6:00p	Lyrical
Wednesday	6:00-7:00p	Jazz
Wednesday	7:00-8:00p	Hip Hop
Wednesday	8:00-8:45p	6-12 POM Dance Squad
Thursday	4:00-5:00p	6-12 Ballet
Thursday	5:00-5:30p	6-12 Intermediate Pointe**
Thursday	6:30-7:30p	Jazz
Thursday	7:30-8:15p	Gr 6-12 Skills/Conditioning [#]
Saturday	9:15-10:15a	Gr 6-12 Contemporary
Saturday	10:15-11:45a	Gr 6-12 Ballet
Saturday	11:45-12:45p	Gr 6-12 Int II/Adv/Variations**
Saturday	12:45-1:45p	Gr 6-12 Skills/Conditioning [#]

Adults

Monday	8:00-9:00p	Hip Hop
Tuesday	12:00-12:45p	Yoga
Wednesday	8:00-9:00p	Jazz/Tap



[#] non-performing class

⁺adult classes discounted to \$46/mo for 1 hour class

Pointe Requirements: Pointe dancers are REQUIRED to take at least TWO ballet technique classes per Week.

* Beginning pointe students are required to have a minimum of two years ballet experience immediately preceding the year they begin pointe, permission from Juli to attend the class, and attendance in the ballet class immediately preceding the pointe class.

** Intermediate & Intermediate II/Advanced Pointe classes require one year of previous pointe experience, permission from Juli to attend the class, and attendance in the ballet class immediately preceding the pointe class.

FEE SCHEDULE

Curriculum

Our dance curriculum is based on a 32-week program. Classes begin on Thursday, September 5th and end with our annual Spring Recitals in May. The first third of the year, dancers will focus on proper technique and skills; in December we begin winter show choreography and rehearsals for the January performance; in February instructors will announce spring recital songs and begin choreography in class.

Monthly Tuition

Monthly installment payments are for class tuition:

- 30 minute class = \$35.00/month
- 45 minute class = \$44.00/month
- 1 hour class = \$54.00/month
- 1.25 hour class = \$64.00/month
- 1.5 hour class = \$74.00/month



- ⌋ Payment is due by the 1st of every month and is the same regardless of how many classes there are in a month. A student is not registered until the first payment is made in full.
- ⌋ All payments are made electronically. After your initial payment with registration remaining monthly installments will be run automatically October - May.
- ⌋ Payments are non-transferable and non-refundable. A \$20 late fee is assessed for all payments received after the 8th of the month. DE has the right to suspend a student if payments are delinquent.
- ⌋ A charge of \$25/dancer/change will be automatically charged for class changes made after September 1.
- ⌋ No refunds for spring performance costs after November 15. No refunds for winter performance costs after December 15.

Registration Fee

An annual \$30 per family registration fee is due with your initial registration payment of the school year season.

Discounts

Dancers taking more than one class will receive 5% off each additional class each month (discount taken on lesser amount). Family Member Discounts occur when students from the same immediate family enroll in classes. We will discount 5% from the lowest tuition amount for the 2nd & additional dancers.

Performance Fees

All students will participate in Winter Shows in January and Spring Recitals in May. Performances include the following fees:

- ⌋ SPRING RECITALS (Due November 15th):
 - Payments can be divided into 3 payments due the 1st of Sept, Oct, Nov
 - Grades 4-Adults = \$100 first class, \$75 each additional class
 - Dancers must have the appropriate color and style of tights and shoes.
 - Performance fees includes costume purchase, recital tshirt, digital download of all shows and production costs (\$180-value). No refunds for spring fees after November 15.
- ⌋ WINTER SHOWS (Due December 15th):
 - Grade 6-12 = \$97/dancer
 - Cast = \$93/dancer
 - DE rents out most costumes and there are additional rehearsals on Saturdays (Sundays if in grade 6-12 cast). Dancers must have the appropriate color and style of tights and shoes. The Winter Show performance fee includes costume rental, winter show tshirt, digital download of all shows and production costs. No refunds for winter fees after December 15.

Additional Policies

You will be required to electronically sign consent to all of our studio policies with your registration. Please review these carefully.

Join us at an Open House!
August 8th or 13th , 6:00-8:00pm