

Restaurant Space Available In The Heart of Keego Harbor!

Details

- Located in prime, highly desirable Oakland County, Michigan with great area demographics
- Move in ready space that can accommodate interior dining
- Existing restaurant equipment- hood, grill, walk-in refrigerator/freezer - available at location
- Convenient storefront parking with high parking ratio
- Fiber internet connection available
- Traffic Count: 17,222 Vehicles/day (Costar, 2018)
- Ideal location for franchise restaurant, catering, local cafe, coney island, pizza shop, deli, sandwich/sub shop, take-out food service concepts.
- 1,500 SF contiguous space available
- Walk-up window option available
- Within minutes from Cass Lake, Sylvan Lake, Orchard Lake and Elizabeth Lake
- Great location for national tenants or local food service restaurant with dedicated entrance & building signage

Demographics

- Population: 170,178 | Households: 66,796 | Employees: 68,109
 - Average household income: \$103,544/ annually





WALK-IN REFRIGERATOR & FREEZER



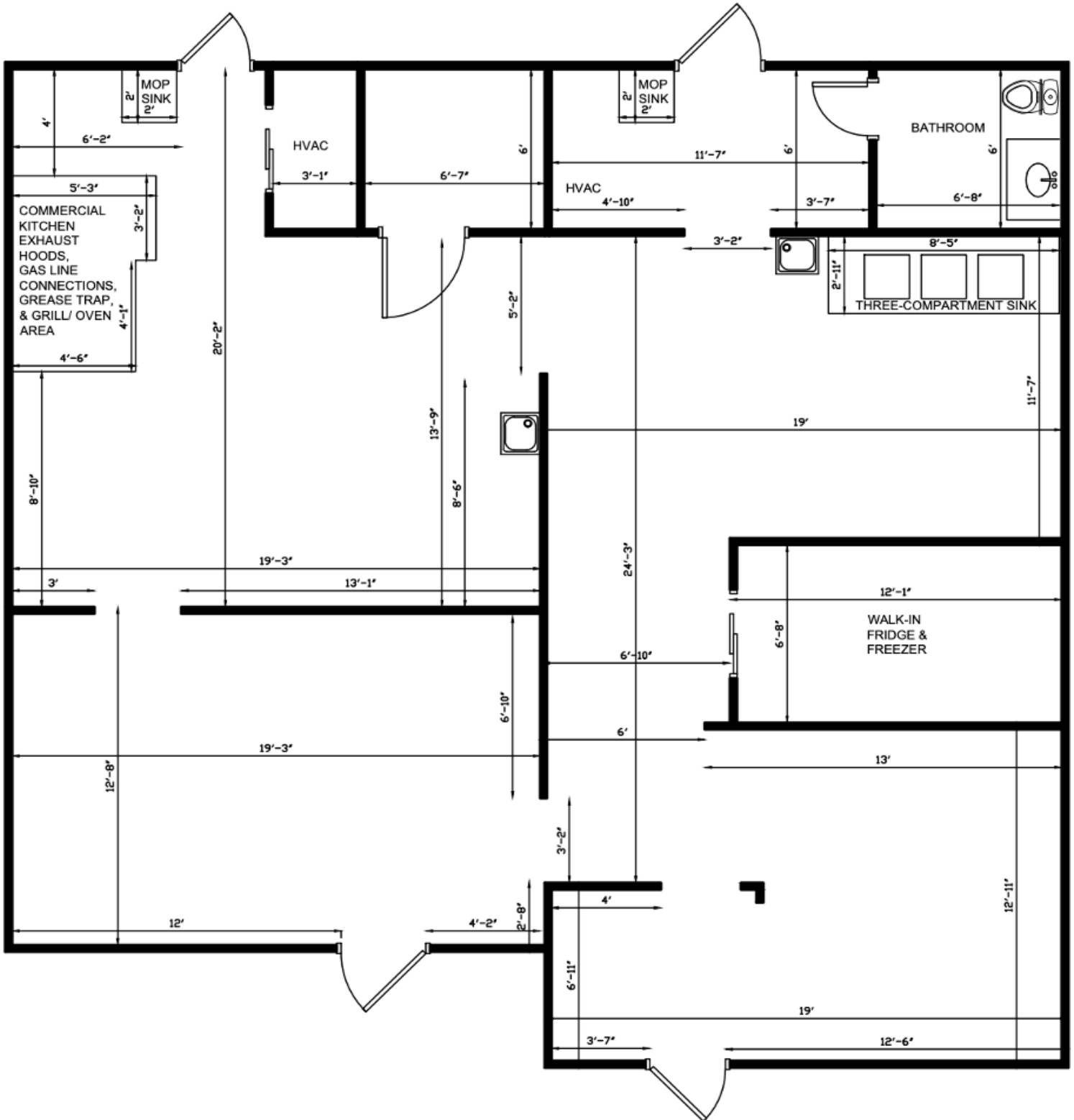
THREE COMPARTMENT SINK



PREP AREA



EXHAUST HOODS





Gibbs Planning Group is currently leading a six-month master planning process to explore the transformation of Cass Lake Road into a traditional walkable village.