

REVELATIONS

HIGH PERFORMANCE

WOVEN FABRICS

- OPERABLE PARTITIONS
- ACCORDION DOORS

COMMITMENT TO THE ENVIRONMENT

ALL REVELATIONS FABRICS ARE VOC, ODS AND PVC FREE.
THEY CONTAIN NO HEAVY METALS OR FORMALDEHYDE.



HUF COR Inc.

P.O. Box 5591, 2101 Kennedy Rd.

Janesville, WI 53547

Tel: 608-756-1241 or 800-356-6968

FAX: 608-758-8253

Website: www.hufcor.com

Email: info@hufcor.com

FACADE
102-10
Bluefrost



MATRIX
100-11
Caraway



SAHARA
109-07
Lava



SILK ROAD
22-07
Copper



GLITZ
110-01
Diamond



NOTION
106-02
Tealight



CONFETTI
101-07
Sesame



DELIGHT
48-03
Coin



REVELATIONS

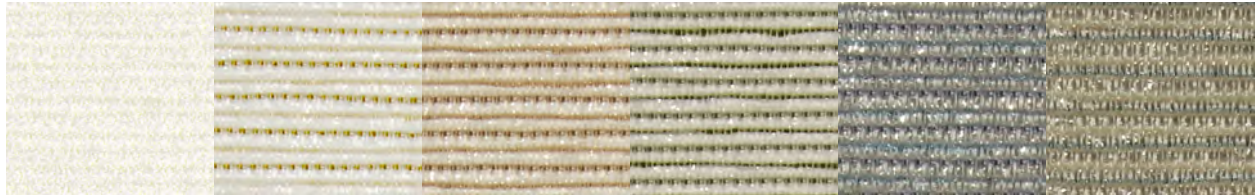
COMMITMENT TO THE ENVIRONMENT
ALL REVELATIONS FABRICS ARE VOC, ODS AND PVC FREE.
THEY CONTAIN NO HEAVY METALS OR FORMALDEHYDE.



HUF COR Inc.
P.O. Box 5591, 2101 Kennedy Road
Janesville, WI 53547
Tel: 608-756-1241 or 800-356-6968
FAX: 608-758-8253
Website: www.hufcor.com
Email: info@hufcor.com

REVELATIONS

GLITZ



110-01
Diamond

110-02
Candlelight

110-03
Calypso

110-04
Palm

110-05
Ice Blue

110-06
Mediterranean



110-07
Grey Mist

110-08
Ocean Grey

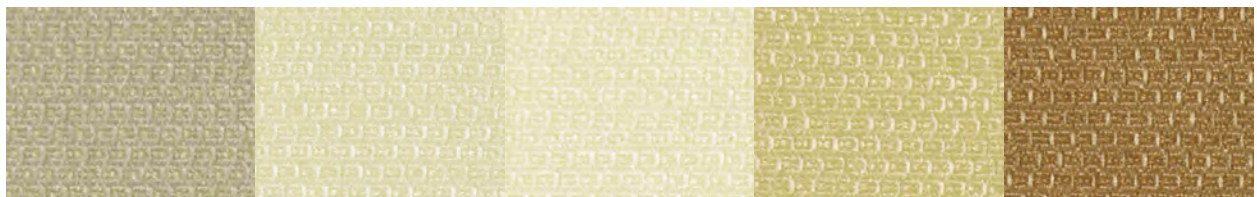
110-09
Sunset

110-10
Penny

110-11
Dorset Gold

110-12
Safari

MATRIX



100-12
Moonstone

100-03
Antique Bone

100-02
Pearl

100-04
Buttercream

100-09
Honey



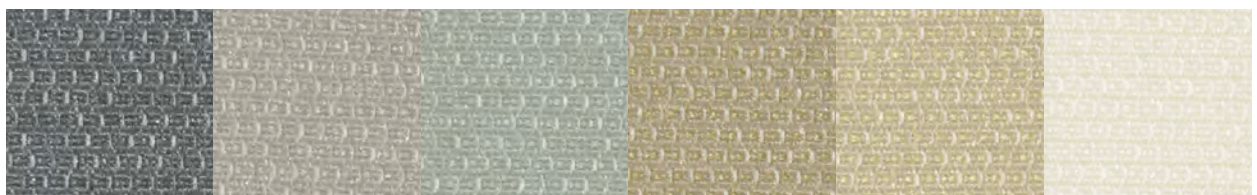
100-16
Platinum

100-08
Quarry

100-10
Brownstone

100-11
Caraway

100-05
Wild Wheat



100-14
Glacier

100-13
Quicksilver

100-15
Mystique

100-07
Hopsack

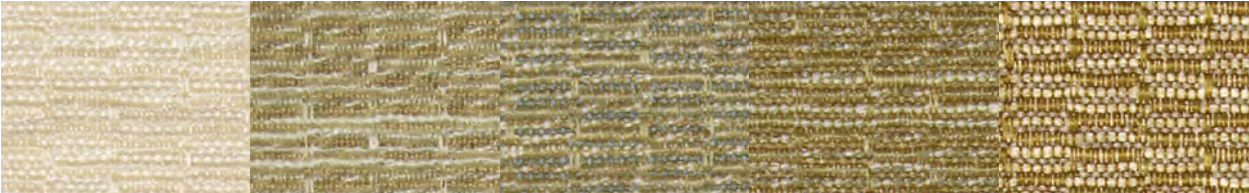
100-06
Water Chestnut

100-01
Cosmos

FACADE



102-01 Flax 102-03 Bisque 102-05 Dusk 102-06 Driftwood 102-10 Bluefrost

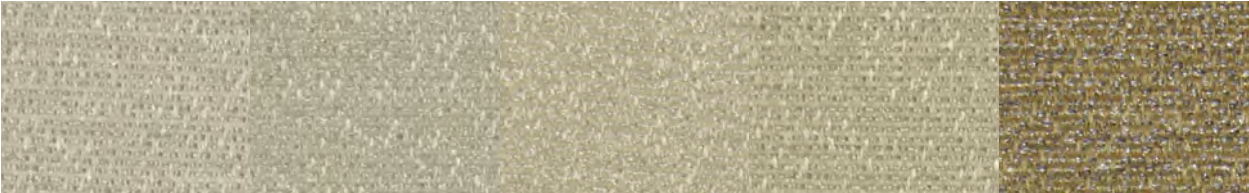


102-02 Glow 102-04 Truffle 102-09 Caraway 102-07 Amber 102-08 Toffee

DELIGHT



48-10 Steel 48-05 Fog 48-07 Nutmeg 48-04 Ecru 48-06 Leaf 48-08 Oceanic

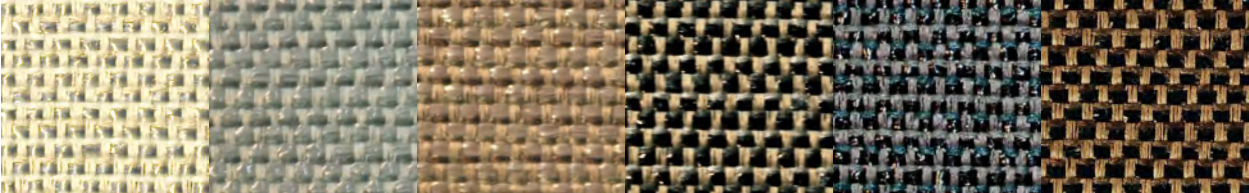


48-02 Birch 48-11 Tarragon 48-09 Sepia 48-01 Antique 48-03 Coin

NOTION



106-01 Glimmer 106-02 Tealight 106-03 Macadamia 106-04 Fennel 106-05 Tassel 106-06 Sierra 106-07 Leaf



106-08 Koi 106-09 Stone 106-10 Coffee Bean 106-11 Newsprint 106-12 Night Sky 106-13 Hazelnut

CONFETTI



101-08
Blush

101-04
Sand

101-01
Shell

101-02
Spa

101-03
Shimmer



101-05
Cork

101-07
Sesame

101-06
Desert

101-09
Copper

101-10
Canyon

SAHARA



109-01
Malt

109-02
Barley

109-03
Papaya

109-04
Gold Dust

109-05
Sienna



109-06
Spruce

109-07
Lava

109-08
Ink

109-09
Barrista

SILK ROAD



22-01
Tusk

22-02
Rawsilk

22-04
Platinum

22-08
Mist

22-05
Dune



22-09
Storm

22-10
Lake

22-07
Copper

22-06
Sandcastle

22-03
Raffia

REVELATIONS

PHYSICAL SPECIFICATIONS

CONFETTI, DELIGHT, FACADE, MATRIX, SILK ROAD

CONTENTS: WOVEN OF OLEFIN/POLYESTER YARNS
WIDTH: 54" PLUS (SELVAGE)
BACKING: ACRYLIC/LATEX WITH MILDEW INHIBITOR
ROLL SIZE: 50 YARDS
FINISH: TEFLON® FABRIC PROTECTION BY DUPONT

GLITZ, NOTION, SAHARA

CONTENTS: WOVEN OF OLEFIN/POLYESTER YARNS/RECYCLED YARNS
RECYCLED CONTENT:
SAHARA: 100% - 43% POST-CONSUMER, 57% PRE-CONSUMER
GLITZ: 43% - 10% POST-CONSUMER, 33% PRE-CONSUMER
NOTION: 30% PRE-CONSUMER
WIDTH: 54" PLUS (SELVAGE)
BACKING: ACRYLIC LATEX
ROLL SIZE: 50 YARDS
FINISH: CRYPTON® "GREEN" SOIL & STAIN REPELLANT

FLAMMABILITY AND PERFORMANCE

CONFETTI, DELIGHT, FACADE, MATRIX, SILK ROAD

PASSES: CLASS A
PASSES: CORNER BURN
PASSES: VERTICAL BURN
TOXICITY: MEA #279-90M
CIGARETTE IGNITION: UFAC CLASS 1

COLORFASTNESS TO LIGHT: CLASS 5
ABRASION RESISTANCE: UP TO 100,000 DOUBLE RUBS

GLITZ, NOTION, SAHARA

PASSES: CLASS A
PASSES: CORNER BURN
PASSES: VERTICAL BURN
PASSES: CAsEc01350
PASSES: CHPS
PASSES: GREENGUARD
TOXICITY: MEA #279-90M
CIGARETTE IGNITION: UFAC CLASS 1

COLORFASTNESS TO LIGHT: CLASS 5
ABRASION RESISTANCE: UP TO 100,000 DOUBLE RUBS

COMMITMENT TO THE ENVIRONMENT

ALL REVELATIONS FABRICS ARE VOC, ODS AND PVC FREE. THEY CONTAIN NO HEAVY METALS OR FORMALDEHYDE.

MAKE AN ENVIRONMENTAL SOLUTION, A SUSTAINABLE CHOICE WITH GLITZ, NOTION AND SAHARA.

BREATHABLE

THE PERMEABILITY OF REVELATIONS FABRICS HELPS REDUCE MILDEW ON AND WITHIN WALLS BY **NOT** ACTING AS A MOISTURE BARRIER.

ASTM E-96, PROCEDURE B: 114.6 US PERMS

ANTIMICROBIAL

FABRIC WILL NOT MILDEW, ROT OR SUPPORT THE GROWTH OF BACTERIA AND IS NON-ALLERGENIC.

MAINTENANCE

FABRIC IS EASY TO CLEAN. DEPENDING UPON THE EXTENT OF SOILAGE, USE TRADITIONAL METHODS. IE., WASHING, WIPING, VACUUMING. IF PROMPTLY TREATED, MOST INDELIBLE STAINS CAN BE REMOVED BY USING UNDILUTED CHLORINE BLEACH (CLOROX) OR SELECTED CLEANING AGENTS WITH NO DAMAGING EFFECTS.

REPREVE®

recycled yarns by unifi
Repreve is a registered trademark of Unifi, Inc.

 CRYPTON®

© 2012 Crypton, Inc., Crypton and the planet logo are a registered trademarks of Crypton, Inc.

 HUF COR®

P.O. Box 5591 • 2101 Kennedy Road • Janesville, WI 53547
Toll-Free 800-542-2371 ext. 214 • Or Telephone 608-756-1241
FAX: 608-758-8253 • E-mail: info@hufcor.com

Web: www.hufcor.com

 DU PONT®

Teflon®
fabric protector
Only by DuPont

®DuPont registered trademark for textile finish.