



**CONTEST:** Saturday, March 7, 2020

**HOST:** Seagraves Student Organizations

**LOCATION:** Seagraves High School (1801 Ave K, Seagraves, TX)  
Seagraves Junior High (1601 Ave K, Seagraves, TX)

**CONTEST COORDINATOR:** Kami Miller, [kami.millert@seagravesisd.com](mailto:kami.millert@seagravesisd.com), 806-241-2959

**ADMISSION:** \$10 adults, \$5 8 years-high school  
Free for Children 7 and under  
Band Directors, Bus Drivers, Truck Drivers, may use a school issued I.D. to enter the show for free.

**CONTEST SPECIFICS:**

Check in Time: Please make sure to check in at your designated time. Check in is at the High School band Hall. Should you check in early prop/floor storage, concessions, and a holding area will be available.

Bus Parking: Please see the parking map. There will be a Seagraves Band parent working the parking lot. We ask that you follow their instructions at all times. Safety first.

Dressing Rooms: Unit members will NOT be allowed to change in the restrooms next to the cafeteria/performance gym as they will be the only restrooms available for audience use. There are restrooms in the holding area for units to change clothes ONLY. Make up and accessorizing must be done in the holding area. Units are highly encouraged to arrive in full uniform.

Timing line: **GUARDS:** This contest will utilize a Horizontal timing line. Guards will enter from the East left and exit from the judges West. Please see the maps below. **PERCUSSION:** This contest will use a horizontal timing line. Units will enter from the North and exit to the South. **ALL FLOORS WILL NEED TO BE CARRIED OUT OF THE PERFORMANCE FLOOR IN THE INTEREST OF TIME.**

Guard Contest Flow: Units will enter the Body Warm up at their designated time, followed by the Equipment Warm up, and finally the Performance Gym. The circuit will provide a detailed schedule. (see map) Please keep in mind that the Body Warm up is on an auditorium stage. The Equipment Warm up



will take place in the junior high gym. Performance will take place in the High School gym. A floor will be provided for all Guard Performances. **Please keep in mind that there are basketball goals on the ends of the performance gym that DO NOT move.**

Percussion Contest Flow: Percussion units are allowed open warm up in the parking lot South of the Junior High. Units will enter the building through the doors on the East side of the building. There are stairs or a ramp to get up to the building entrance. (See Map) Before their designated performance time, percussion units should report to the Percussion Performance Entrance where they will be staged for prior to their performance. A Vinyl Floor WILL be provided for Percussion Performances. **Please keep in mind that there are basketball goals on the ends of the performance gym that DO NOT move.**

Inclement Weather: There will be no inclement weather plan. Percussion Units, please plan on warming up outside unless there is severe weather. In the event of severe weather please keep an eye on communications from CCGC for up to the minute details.

Performance Access: After leaving the equipment warm up the guards will enter the gym from the North door via the hallway and will exit via the South door. Guards may exit the building from there and load equipment OR continue through the hall behind the visitors stands and return equipment to the holding area. Anything that does not fit through a single door will enter through the visitor stands (will have to be carried up the stairs and lowered on to the gymnasium floor.

Floor Folding: Time will be added to the schedule to allow for floor folding in the performance gym after your performance.

Props Storage Area: Props and floors will have a designated storage area in a hallway at the High School. See map. Should you so desire, we will provide a floor crew to assist with any floors or large props.

Video Taping: There is NO VIDEO RECORDING ALLOWED. Please refer to the CCGC Website or Facebook Directors page to see the policy.

Props: All props should be properly taped, padded, and secured. Equipment and props will be checked immediately after you check in. Please comply with any host or circuit request to tape additional edges, surfaces, etc

Floor Carts: Floor carts will NOT be allowed in the gym.

First Aid: A first aid station will be set up in the training room beside the high school gym.

Participant Seating: All participants will be able to watch the remainder of the show from the visitor side of the gym only. See the map.



**Local Restaurants:**

Dixie Dog  
801 Railroad Ave  
Seagraves, TX 79359  
806-546-2731

Main Street Pizza  
304 Main St  
Seagraves, TX 79359  
806-752-7191

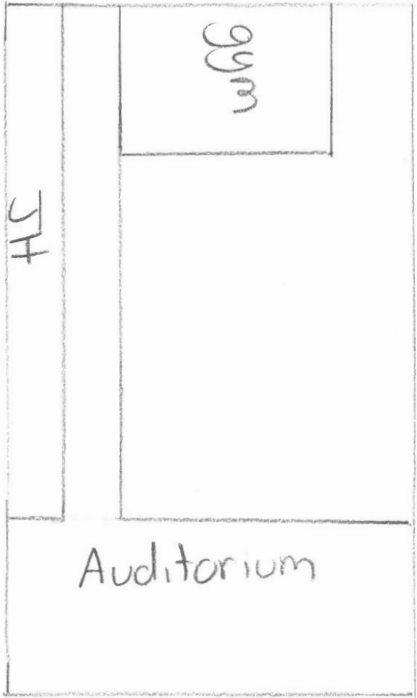
Amigos  
304 12<sup>th</sup> St  
Seagraves, TX 79359  
806-387-3287

Rositas  
201 Railroad Ave  
Seagraves, TX 79359  
806-387-3620



47705  
FS 4+91

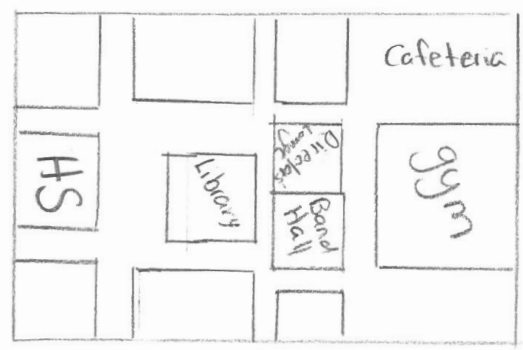
spectator parking



Ave K  
East

West

Parking



North



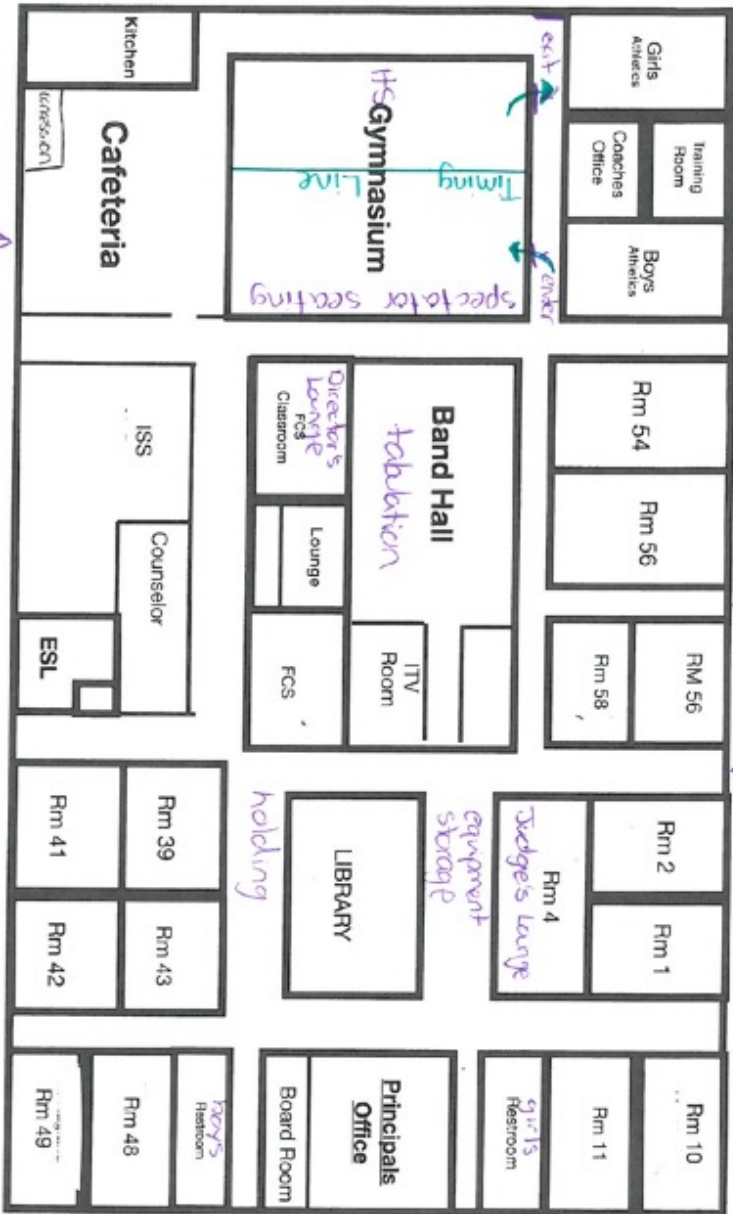
Seagraves High School

North

West

Bus Parking

check-in



South

East

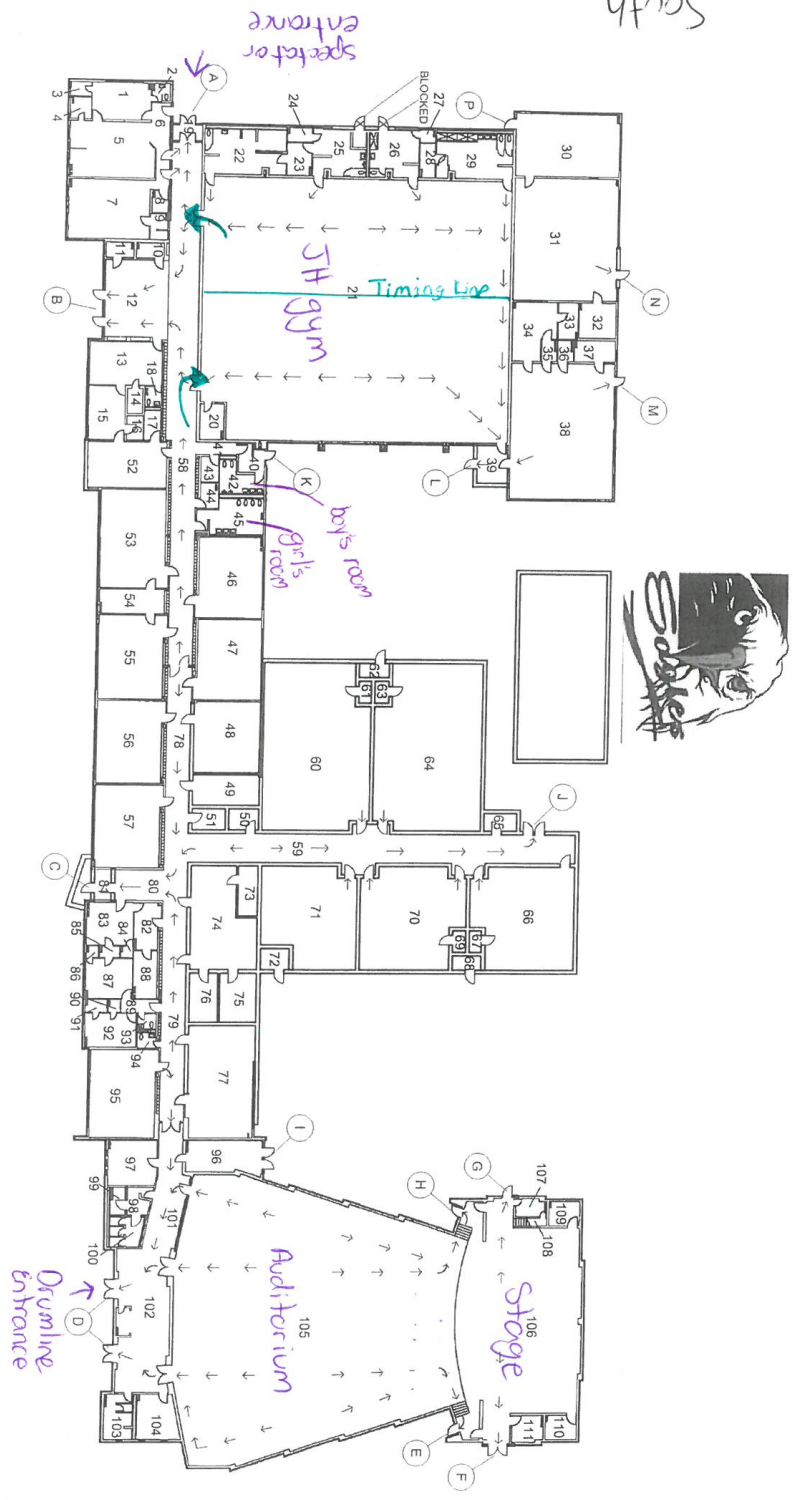


Seagraves Junior High

West

North

South



Drumline warm-up

Fast