



## PREMIER SERIES CAST IRON CLOSER OPTIONAL ARMS, COMMERCIAL CLOSERS & ACCESSORIES

### DC6800 SERIES CAST IRON CLOSER OPTIONAL ARMS & SEX BOLTS



**DC6816CUARM DU**

**DC6816HOARM AL**

**DCSEXNUTS**

- For through bolt mounting (package of 4)

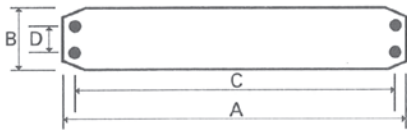
MFG #	DESCRIPTION	FINISH	EZ #
DC6816CUARM AL	Cush Arm	Aluminum	087842
DC6816CUARM DU	Cush Arm	Duranodic	087843
DC6816HOARM AL	Cush Hold Open Arm	Aluminum	087921
DCSEXNUTS	Through Bolts	Nickel	082822

### DC6120 SERIES MULTI SIZED DOOR CLOSER, OPTIONAL ARMS, DROP PLATE, BRACKET & SEX BOLTS

**GRADE 2**



Specifically designed for high traffic situations. Can be installed on aluminum storefront doors, interior wood, and hollow metal doors. Ideal for offices, apartments, restaurants, shopping malls and other commercial applications.



A	B	C	D
9-5/8"	1-3/4"	9"	3/4"

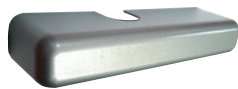
#### FEATURES & APPLICATIONS

- Adjustable power door closer from 1 to 4 with adjustable backcheck
- Adjustable sweep & latch speeds
- Handicap compliant
- Tri-pack mounting options: Regular arm, parallel arm or top jamb mounting
- Available with optional full cover MFG# DCCO K06AL
- For doors up to 187lbs, 42" wide with 180° opening

#### CONSTRUCTION & TECHNICAL DETAILS

- Constructed with precision aluminum die-cast body & steel arm
- Installed precision needle bearings for high efficiency, smooth operation, and durability
- Built-in pressure relief valve protects the closer against rough use
- Heat treated steel rack & pinion is immersed in high grade oil to give a smooth and precise action with minimum wear
- ANSI Grade 2 compliant, UL listed

\* Can be adjusted to size 5 with alternate mounting on door



**DCCO K06AL**



**DCSEXNUTS**

- For through bolt mounting (package of 4)



**DCAR B54AL**



**DCAR A44AL**

MFG #	FINISH	EZ #
DC6124PA BC AL	Aluminum	082792
DC6124PA BC DU	Duranodic	082793



**DCMO K02AL**

- For top jamb applications where rail is less than 1-3/4"



**DCMO K07AL**

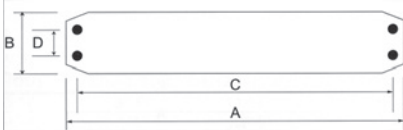
- For push side mounting on top jamb applications

MFG #	DESCRIPTION	FINISH	EZ #
DCAR A44AL	Standard Arm	Aluminum	082806
DCAR B54AL	Ratchet Hold Open Arm	Aluminum	082808
DCCO K06AL	Full Cover	Aluminum	082812
DCMO K02AL	Top Rail Drop Plate	Aluminum	082816
DCPA K07AL	Angle Bracket	Aluminum	082818
DCSEXNUTS	Through Bolts	Nickel	082822



### DC84 SERIES SIZE 4 DOOR CLOSER & ACCESSORIES

**GRADE 3**



A	B	C	D
9-7/8"	1-7/8"	9"	3/4"

- Specifically designed for medium traffic situations
- Ideal for light commercial or residential applications
- Suitable for interior and exterior usage, not recommended where backcheck is required
- Adjustable sweep & latch speeds
- Supplied with parallel arm mounting bracket
- Maximum opening angle of 180°
- Constructed with precision aluminum die cast body & steel arm
- Heat treated rack & pinion is immersed in high grade oil operates a nest of coils to give a smooth precise action with minimum wear
- Oil tempered alloy steel springs
- Max. door size: up to 41" door, 150 lbs
- ANSI Grade 3 compliant
- UL listed: R25967, conforms to UL10C

MFG #	FINISH	EZ #
DC84PA AL	Aluminum	082794
DC84PA DU	Duranodic	082795

**DCAR A07AL**



**DCMO K07AL**



- For push side mounting on top jamb applications



**DCSEXNUTS**

- For through bolt mounting (package of 4)

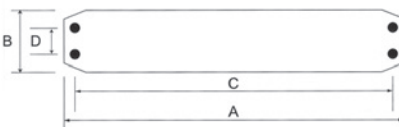


**DCMO K02AL**

- For top jamb applications where rail is less than 1-3/4"

MFG #	DESCRIPTION	FINISH	EZ #
DCAR A07AL	Standard Arm	Aluminum	082823
DCAR A07DU	Standard Arm	Duranodic	082824
DCMO K02AL	Top Rail Drop Plate	Aluminum	082816
DCPA K07AL	Angle Bracket	Aluminum	082818
DCSEXNUTS	Through Bolts	Nickel	082822

### DC724 SERIES ECONOMY DOOR CLOSER & ACCESSORIES



A	B	C	D
7"	1-3/4"	6-1/2"	3/4"

- Designed for light to medium traffic situations
- Can be installed on interior wood doors and interior metal doors
- Perfect for low traffic light commercial and residential applications such as office, apartment and hotel unit doors
- Fixed closing force with selectable sizes 2-4
- The closing force settings are altered by changing the position of the closer on the door
- Adjustable sweep & latch speeds
- Supplied with parallel arm mounting bracket
- Constructed with precision aluminum die-cast body & steel arm
- Heat treated rack & pinion is immersed in high grade oil operate a nest of coils to give a smooth precise action & minimum wear
- Oil tempered alloy steel springs
- Max. door size:
  - » Size 2: Door width 33-1/2", weight 88 lbs, opening angle 180°
  - » Size 3: Door width 37-1/2", weight 132 lbs, opening angle 180°
  - » Size 4: Door width 43", weight 176 lbs, opening angle 170°
- UL listed: R25967, conforms to UL 10C

MFG #	FINISH	EZ #
DC724PA AL	Aluminum	082785
DC724PA DU	Duranodic	082786

**DCAR A13AL**



**DCSEXNUTS**

- For through bolt mounting (package of 4)

**DCPA K06AL**



MFG #	DESCRIPTION	FINISH	EZ #
DCAR A13AL	Standard Arm	Aluminum	082800
DCPA K06AL	Parallel Arm Bracket	Aluminum	082820
DCSEXNUTS	Through Bolts	Nickel	082822

# MISCELLANEOUS

## ASA STRIKES, FLUSH BOLTS, FASTENER SEXBOLT, PUSH & PULL HANDLES

### ASA STRIKES



- Meets the ASA strike specification size of A115.2 of 4-7/8"H x 1-1/4"W
- Used for knob & lever sets in commercial applications

MFG #	TYPE	FINISH	EZ #
ASA C15	Standard	Brushed Nickel	035224
ASAC3	Standard	Polished Brass	082308
ASAC15T	Adjustable Lip	Brushed Nickel	083790

### FLUSH BOLTS



DC840



DC860

- For keeping the inactive door of a pair of doors stationary
- DC840 supplied in pairs
- DC860 sold individually

MFG #	FOR	HEIGHT	WIDTH	THROW	EZ #
DC840 C15	Steel	6-1/4"	1'	5/8'	086322
DC860C28	Aluminum	5-1/4"	15/16"	5/8"	039421

### FASTENER SEXBOLT



- Zinc plated thru-bolt for affixing door closers, exit devices and other hardware on 1-3/4" doors where a blind bolt fastener is required on exterior side
- Allen key nut interior

MFG #	EZ #
SF710ZCB	039649

### PUSH & PULL PLATES



1410



H1413

#### 1410

- Push/pull plate combination with a 9" pull mounted on a 4" x 16" push plate
- Aluminum finish

#### H1413

- Pull handle only

MFG #	DESCRIPTION	EZ #
1410 AL	Push Pull Handle Set	035220
H1413	9" Pull Handle Only	067805

M