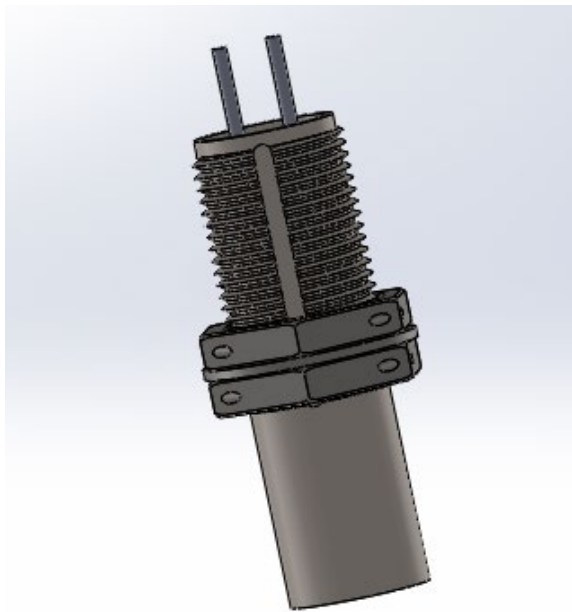




PRODUCT RELEASE

*PMA Aeroparts P/N 8-950-01AP, Proximity Sensor
FAA Approved Replacement for
Crane Eldec 8-950-01*



PMA Aeroparts announces the release of our latest FAA PMA product, Proximity Sensor P/N 8-950-01AP. This product is an approved replacement for the Crane-Eldec 8-950-01. This Proximity Sensor is used throughout various locations in the MHI RJ Aviation ULC CL-600-2C10, CL-600-2C11, CL-600-2D15, CL-600-2D24 and CL-600-2E25 series aircraft.

The PMA Sensors numerous improvements over the OEM and other PMA sensors include improved strain relief and wire seal, as well as improved stability at temperature extremes due to an improved inductor design.

Original OEM Issue	Design improvement
Moisture Intrusion through wiring entry	Addition of internal Teflon wire seals and improved construction of wire seal.



Performance Instability at temperature extremes.

Use of a more stable magnetic core in order to facilitate better inductor stability at temperature extremes.

This PMA was granted on the basis of Test and Computation per 14 CFR 21.303.



U.S. Department of Transportation
Federal Aviation Administration

FEDERAL AVIATION ADMINISTRATION - PARTS MANUFACTURER APPROVAL

PMA Aeroparts LLC
11350 66th Street N, Suite 102
Largo, Florida 33773

PMA No.: PQ04309CE
Supplement No.: 18
Date: September 9, 2020


Article Name	Article Number	Approved Replacement for Article Number	Approval Basis and Approved Design Data	Make/TCE Eligibility	Model/Series Eligibility
Proximity Sensor	8-642-02AP	8-642-02	Test & Computation per 14 CFR 21.305 DWG No: 8-642-02AP Rev: IR Date: 4/21/2020 or later FAA-approved revisions	MHI RJ Aviation ULC De Havilland Aircraft of Canada Limited	CL-600-2B19 (Regional Jet Series 100 & 440) DHC-8-100 Series DHC-8-300 Series
Proximity Sensor	8-950-01AP	8-950-01	Test & Computation per 14 CFR 21.305 DWG No: 8-950-01AP Rev: IR Date: 4/21/2020 or later FAA-approved revisions	MHI RJ Aviation ULC	CL-600-2C10 (Regional Jet Series 700) CL-600-2C11 (Regional Jet Series 550) CL-600-2D15 (Regional Jet Series 705) CL-600-2D24 (Regional Jet Series 900) CL-600-2F25 (Regional Jet Series 1000)

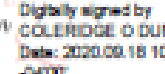
END OF DATA

GENERAL NOTES:

Provide minor design changes in a manner as determined by the ACO. Process major design changes to drawings and specifications in the same manner as that for an original FAA-PMA.

The FAA accepted the ICA approach for the above articles with their designs. These ICA may refer to those of the respective articles from the holders of type certificates. Otherwise, provide supplemental ICA for differences in the replacement articles. Make referral statements or supplemental ICA readily available per 14 CFR 21.50.


(for) Digitally signed by
DARBY J MIROCHA
Date: 2020.09.09
12:45:14 -04'00'


(for) Digitally signed by
COLERIDGE O DUNCAN
Date: 2020.09.18 10:30:11
-04'00'

John Kolin
Manager, Orlando MIDO Section
System Oversight Division