

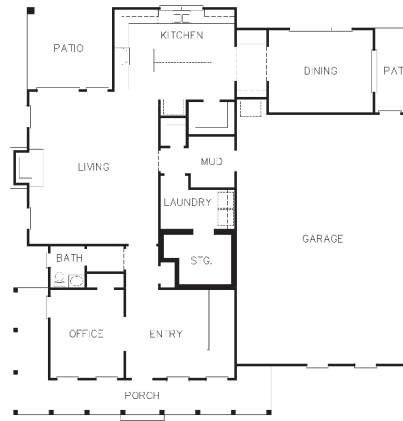


ABOUT THE HOME

- Classic farmhouse style with traditional layout.
- Lovely, partial wrap-around front porch.
- Inviting front entry and stairway.
- All bedrooms and huge bonus room upstairs.
- Large kitchen and sun-filled dining room separated by butler's pantry.
- FEMA-designed safe room.
- Conveniently located home office.
- Shiplap, wainscoting, and heavy crown molding throughout.

SUPPORTED BY

- Acme Brick Company
- All-Service Window & Door Co.
- Bostock Drafting and Design
- Cooks Lighting & Flooring
- East Texas Professional Credit Union
- FastSigns
- Gans & Smith Insurance
- Harry's Building Materials
- Hidalgo Granite Group
- Jack's Air Conditioning and Heating
- JLBJ Septic Services
- JMH Electric
- Johnnys Carpet
- One Flooring & Home
- Longview Glass Company
- National Wholesale Supply
- R & L Insulating
- Satterwhite Log Homes
- Sherwin-Williams Paint
- Suzy's Paper Hanging



BED	BATH	GARAGE	SQ. FT.	SCHOOLS
4	2.5	3	3,687	Gilmer ISD

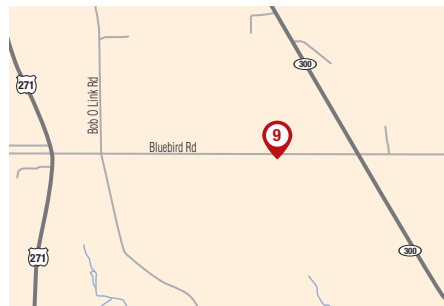
MEET THE BUILDER



**GOFORTH CUSTOM BUILDERS**  
Tommy & Allison Goforth

C: 903-424-6589  
tommy@goforthcustombuilders.com  
www.goforthcustombuilders.com

DIRECTIONS



From intersection of Texas Highway 300/Gilmer Road and FM 1844/Seven Pines Road, continue North on Texas Highway 300 for 9.4 miles. Turn left on Bluebird Road and follow for 0.4 miles, home will be on the left.

ACREAGE • 1305 BLUEBIRD ROAD, GILMER, TX