

**MATERNAL POWER ANGUS BULL SALE**

At the Ranch | Feb. 23, 2019, 3 p.m. | Fort Rice, N.D.





---




---

## **PROVEN, BALANCED COW-MAKERS**

Our cattle are backed by generations of proven, efficient genetics, emphasizing calving ease, fleshing ability, udder quality, disposition, structure and fertility.

---



---



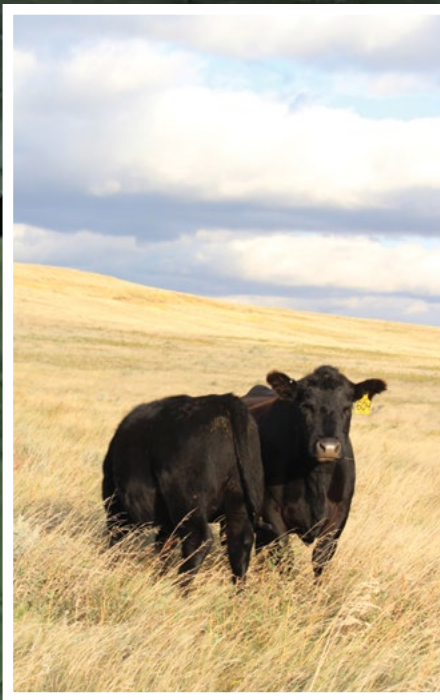
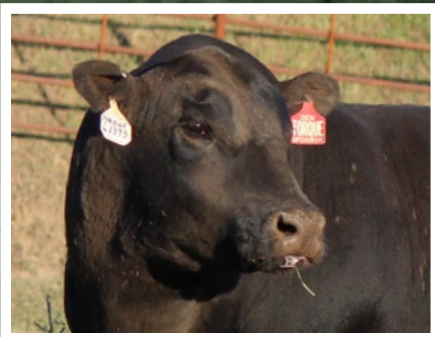
## A BALANCING ACT:

Chasing fads or using one-trait selection is a really good way to hurt the important traits we all need to survive in the beef industry. The important traits every cowherd needs are fertility, longevity and fleshing ability, as well as sound feet, legs and udders. It is our intention to breed cattle that excel at certain traits, but not at the expense of other important traits.

- We want fleshing ability, but not at the expense of fertility.
- We want cattle to perform, but not to an extreme that it diminishes the cows' ability to breed back and maintain her condition in our environment.
- We want to continually improve weaning weights, but not with the expense of added input cost.
- We want cattle with acceptable carcass merit, but not at the expense of maternal traits.
- We select cattle that are moderate in frame, but we demand that they perform and have ample muscle.

This all sounds like a perfect game plan, but is really a juggling act of sorts. We do extensive research and appraise lots of cattle so that we can make the best informed decision about the genetics we bring in to keep our program moving in the right direction.

**Every decision we make is based on our customers.** If you won't benefit from our decisions, we won't benefit from our decisions. By taking a balanced approach to genetic improvement, we hope to manage our risk – and help you manage yours.







**AARON & SHEYNA  
CASSIDY, COOPER & CLINT**



#### **DIRECTIONS TO THE RANCH**

From Cenex on Main Street in Mandan, take Highway 1806 South 27.5 miles. Turn West onto County Road 135. Go West about 4 miles. The road curves South. Continue South 3.5 miles. The ranch is on the West side of the road. Roads will be marked.

From Solen, go North on County Road 81 for 5 miles, then turn East onto County Road 134 for 7 miles.

Fellow cattlemen -

It is our pleasure to welcome you to our 2019 Strommen Ranch Maternal Power Angus Bull Sale. We are pleased with the potential and the quality of the yearling bulls in this sale. Each one is backed by generations of **MATERNAL POWER**.

From the beginning, we've been laser-focused on producing Angus cattle that prosper in a no-frills environment: moderate-framed, high-volume, easy fleshing cows with good feet, great udders and a quiet disposition. We expect our cows to re-breed quickly and wean a calf that is a high percentage of its dam's bodyweight, year after year. Our cows have consistently improved weaning weights, while increasing the percentage of cows that re-breed in the first 21 days. In 2018, 100% of our cowherd calved within 37 days. You won't find any lick tubs or creep feeders hidden behind the hills of our pastures. **Cattle that can do more with less - that's our definition of MATERNAL POWER!**

From the beginning, we've also been very particular about the sires we bring into the mix. **We hate surprises.** That's why we use a small group of proven, balanced-trait AI sires on our cows each year. We conduct a tremendous amount of research – evaluating the generations of genetics behind a bull, as well as his progeny – before we commit. We believe that a powerful, consistent cowherd can't be built with a "little-bit-of-this-little-bit-of-that" approach to sire selection. You must have a plan and a clear vision of what your ideal cow is. For us, she must exude Maternal Power.

We know what it is like to start from scratch – and how important it is to make cattle work for you, instead of the other way around. As your seedstock provider, we want your operations to be profitable and sustainable for generations – regardless of the market. We believe you can achieve this by developing your own herd of efficient, problem-free livestock backed by **Strommen Ranch MATERNAL POWER genetics.**

We are beyond excited to present this year's offering, which includes an impressive set of calving-ease bulls. The selection of bulls that can be used on heifers is truly the best that we have produced to date and in volume. We have a great, balanced set of bulls for those looking for the female-making kind and will lead off with one of the best to ever walk the ranch in Lot 1, S R Torque 840.

We invite you to attend our 17<sup>th</sup> Annual Maternal Power Angus Bull Sale on Saturday, Feb. 23, 2019, at 3 p.m. at the ranch. The bulls will be penned in small groups outside the sale facility to make viewing and selection easier. Once the auction starts, a large screen will play a video of each bull as he sells. Videos are available at [www.StrommenRanch.com](http://www.StrommenRanch.com).

Thank you to our repeat customers for your trust and confidence in our cattle. We invite new and returning customers to come take a look at this year's offering and the females behind them. **We are committed to your success** and will work to gain your trust, friendship and business. We take a tremendous amount of pride in our cattle and feel fortunate to be raising our family doing what we love most – being your source for Maternal Power Angus seedstock.

- Aaron & Sheyna Strommen







## 2019 ANGUS BULL SALE

AT THE RANCH • FEB 23, 2019 • 3 P.M.

### SALE DAY PHONES

Aaron's Cell.....(701) 290-7983  
Sheyna's Cell.....(701) 290-3886

**SALE ORDER** • We will follow consecutive sale book order.

**TERMS AND CONDITIONS** • All animals sell under the standard terms and conditions of the American Angus Association. Terms of the sale are cash. Full payment is due on sale day, unless prior arrangements have been made.

**BASE PRICE** • All bulls will have a minimum price of \$2,500 sale day. Bidding will begin at the base price.

**BULL DEVELOPMENT** • These bulls have been handled correctly and developed without ANY creep. They have been fed just enough to express genetic differences, but not overfed as to compromise soundness or longevity. We want you to have a bull that will do his job and last for years. We believe our 90-day breeding season guarantee, detailed below, is among the best in the industry.

**DISCOUNTS** • We will offer a \$50/head discount if you purchased a bull last year and a \$50/head discount for volume purchases of 2 or more head.

**EPDS** • EPDs are current as of Jan. 26, 2019.

**SALE TIME & LUNCH** • The sale starts at 3 p.m. CST. Please join us for lunch beginning at 1 p.m. and remain with us after the sale for fellowship and refreshments.

### SALE STAFF

Kyle Shobe, Auctioneer.....(406) 366-0472  
Kris Peterson.....(701) 339-0305  
Scott Ressler.....(701) 391-7310

**FEEDING & DELIVERY** • We will keep all bulls free of charge until delivery. Deliveries start May 1st. We ask that you work with us so that we can get bulls delivered in the most efficient manner. We will offer free delivery within 500 miles of the ranch.

**HEALTH** • All bulls have been on a complete health program as prescribed by Dr. Pat Bierman of the Mandan Vet Clinic, Mandan, N.D. Bulls have been given a vaccination for foot rot and will be boosted when they are fertility tested.

**FERTILITY** • All bulls will pass a fertility exam performed by Dr. Bierman before delivery.

**SIGHT UNSEEN PURCHASES** • If you, for some reason, are unable to attend the sale, but wish to place a bid, feel free to call us and we will handle your bid as if you were here. If you wish to be on the phone during the sale, we will try to accommodate your request. Please let us know in advance so arrangements can be made. All sight unseen purchases are fully guaranteed.

**LIABILITY** • Anyone attending this sale does so at their own risk. Neither the owners nor anyone connected to this sale, assumes any liability, legal or otherwise.

**SIRE GROUPS** • For our customers who are looking to put together a set of closely related herd sires, we are offering many 1/2, 3/4 and full brothers. Groups are highlighted in the footnotes.

**GUARANTEE** • Strommen Ranch is very confident that we have developed these bulls safely. They have been fed just enough to express genetic differences, but not overfed as to compromise soundness or longevity. **We want you to have a bull that will do his job and last for years.** It is important to us that these bulls not only perform from birth to yearling, but from birth through breeding. It is with this confidence in our bulls that we can give our full 90-day breeding season guarantee. We understand that these are animals and that injuries do occur, but we have the utmost confidence that we have developed these bulls in the best way to protect your investment. If an injury or death occurs, Strommen Ranch will guarantee them for the purchase price minus salvage value (\$1,500), or we will provide a replacement bull, if a suitable bull is available.

We don't make you take out an insurance policy and add that to the purchase price. We don't have a formula to take away half of the value of the bull if injury occurs. At the same time, these are not 'disposable' bulls. We expect you to care for your investment in your Strommen Ranch bull, so that if a problem does occur, the most appropriate and timely care is taken. If the bull happens to get injured, or you are unsatisfied with your purchase for any reason, we want to know so we can take care of the issue in a timely manner. All injured bulls must be diagnosed by a veterinarian and any claims must be made by Sept. 15, 2019. **We are committed to our customers and your success.**

Videos of the bulls are available on our website

[www.StrommenRanch.com](http://www.StrommenRanch.com)

Catalog, print advertisements and website designed by **Strommen Livestock Services** • Fort Rice, N.D. • (701) 445-2020 • (701) 290-3886





## INTERNATIONAL GUESTS VISIT STROMMEN RANCH



*Thank you, Juan Debernardi SRL and Genex, CRI for including Strommen Ranch on your 2018 international beef tour!*



*These ranchers from south-central Argentina meet monthly to discuss their operations, share knowledge and advise each other. They toured operations in North Dakota this summer, including Strommen Ranch and Prairie Diamond Ranch of Hebron, below.*



*Aaron shares details about the Strommen Ranch breeding philosophy as tour guests appraise our bred heifers, cow herd and breeding bulls.*







## BRUIN TORQUE 5261

REFERENCE  
SIRE

BD: 8/2/2015

Reg #: 18248293

#S A V 8180 Traveler 004

#S A V 004 Density 4336

S A V May 7238

#Connealy Dateline

Falcon Blackbird 6071

#Vermilion Blackbird 5044

#Sitz Traveler 8180

Boyd Forever Lady 8003

#Leachman Right Time

#S A R Prospector May 9124

#D H D Traveler 6807

#Eila Eila of Conanga

#Leachman Right Time

Vermilion Blackbird 3525

| CE | BW  | WW | YW  | Milk |
|----|-----|----|-----|------|
| 3  | 1.8 | 59 | 115 | 29   |

There are three things Torque does better than any bull we have ever used – he adds body length, improves disposition and he stands on a tremendous foot. He works great on those big-bodied, easy-fleshing females that need spine length and extension up front. He improves disposition and feet quality, all while maintaining maternal function and power. We feel the best is yet to come with the daughters he is leaving us. We are excited about the impact Torque will have here and we have over 50 calves coming in the spring of 2019.



*Torque's disposition is second-to-none. Before we took the top photo, we combed out his tail and wiped his face down with a wet cloth – all while he stood like a gentleman out in the pasture.*



*"We place extensive pressure on our cowherd and ourselves to generate the right genetics that will positively impact our customers herds."*



Lot 1 • S R Torque 840





*Lot 28  
S R Emulation  
8122*

**REFERENCE  
SIRE**

## SINCLAIR EMULATION XXP

BD: 3/3/2006

Reg #: 15355048

#Emulation N Bar 5522  
**#N Bar Emulation EXT**  
N Bar Primrose 2424

#N Bar Emulation EXT  
**#N Bar Primrose Y3051**  
#N Bar Primrose 2429

#Emulation 31  
Ankony 8F78 Lass 8F275  
#Emulation 31  
Primrose N Bar 9962  
#Emulation N Bar 5522  
N Bar Primrose 2424  
#Nichols Trademark S1  
Primrose N Bar 9962

| CE | BW  | WW | YW  | Milk |
|----|-----|----|-----|------|
| 2  | 1.5 | 57 | 105 | 13   |

XXP bulls are remarkably long and deep with an abundance of muscle, along with being docile. We are most excited about the mark his daughters will make in our herd. They are super attractive and feminine-made with depth-of-rib and an easy-fleshing, maternal look. The XXP daughters we have seen were all near-perfectly uddered. We were tentative about using a double-bred EXT, but have been well satisfied with the docility of his progeny.

XXP cattle excel in commercially important traits like calf survivability and they offer superior mothering ability. Of special note is the longevity of his dam – a cow that remained productive into her late teens. This is our last set of XXP-sired calves, as his semen was \$100/straw and we have used up our inventory.



*Lot 2  
S R Capitalist  
848*

**REFERENCE  
SIRE**

## CONNELLY CAPITALIST 028

BD: 1/10/2010

Reg #: 16752262

#Sitz Traveler 8180  
**#SAV Final Answer 0035**  
SAV Emulous 8145

#CRA Bextor 872 5205 608  
**Prides Pita of Conanga 8821**  
Prides Trav of Conanga 6499

#GDAR Traveler 71  
Sitz Everelda Entense 1137  
#Bon View Bando 598  
SAV Sky Emulous 2124  
#BAR Ext Traveler 205  
CRA Lady Jaye 608 498 S Easy  
Traveler of Conanga  
#Pretty Pet of Conanga

| CE | BW  | WW | YW | Milk |
|----|-----|----|----|------|
| 11 | 0.3 | 57 | 99 | 19   |

Capitalist is a high-ranking member of the Select Sires A.I. stud and consistently ranks in the top 25 annually for registrations. This balanced-trait and calving-ease bull left us with large-scrotaled, deep, easy-fleshing, very moderate-framed bulls in an attractive, masculine package. His daughters are a tremendous set, and they are very broody in their appearance. They look to be the Strommen Ranch kind! The daughters we have calved are very productive, raising big calves while staying moderate in their mature frame and maintaining their flesh.





*Lot 6  
SR Advance  
830*

**REFERENCE  
SIRE**

## KOUPAL ADVANCE 28

BD: 1/15/2012

Reg #: 17314326

#OCC Juneau 807J  
**#Koupal Juneau 797**  
Koupals Elba 187

#SAV Initiative 4406  
**Koupal Ebonette 734**  
#Koupals Ebonette 545

#OCC Emblazon 854E  
OCC Dixie Erica 903E  
#OCC Glory 950G  
Beeftand Elba 7119  
#SAV 8180 Traveler 004  
SAV Miss Bobbie 0405  
Bluegrass New Design 203  
Koupals Ebonette 3214

| CE | BW   | WW | YW  | Milk |
|----|------|----|-----|------|
| 14 | -0.3 | 68 | 114 | 30   |

Koupal Advance 28 offers our long-time customers a new genetic calving-ease line. Advance sires calves that are light at birth and have as much vigor as any sire we have used at birth. The bulls have tremendous muscle shape for a calving-ease sire, but his lasting legacy will be the females he has left here.



*Lot 4  
SR Motive  
822*

**REFERENCE  
SIRE**

## SOO LINE MOTIVE 9016

BD: 1/7/2009

Reg #: 16568189

Sandy Bar Advantage 43M  
**HF Kodiak 5R**  
Wilbar Ruby 955N

RR 7407 Rainmaker 2154  
**TLA Beauty 5R**  
Terriene Beauty 35F

#TC Advantage  
Sandy Bar Jemina 44K  
#Vermilion Yellowstone  
Wilbar Ruby 161J  
#A A R Rainmaker 7407  
#H A Concepciona 0224  
Tarrlene Executive Pride 10D  
KBJ Berauty 257B

| CE | BW  | WW | YW | Milk |
|----|-----|----|----|------|
| 6  | 0.4 | 47 | 84 | 20   |

Low birth, unmatched character and eye appeal

Motive is proving to be one of the leading outcross, low birth and strong phenotype bulls in the industry and his progeny are proving to be remarkably consistent.

He owns that extra flare to his muscle design that is so rare with his low birth combination and even more importantly, he stands on superior feet that are 100% perfect and passes it on to his progeny. This will be our last set of Motive calves. We are excited to move on with his daughters in our herd.

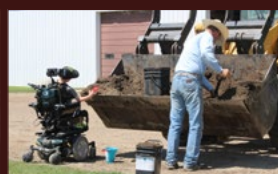




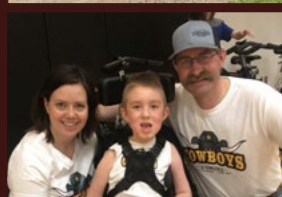
## NORTH DAKOTA ANGUS FALL TOUR



*More than 200 individuals from 12 states and two Canadian provinces visited Strommen Ranch during the 2018 North Dakota Angus Association Fall tour. It was one of the most well-attended tours ever hosted by the North Dakota Angus Association.*



*Enjoy* the little things in life for one day, you'll look back & realize they were the **BIG THINGS.**







**LOT 1 ~ S R TORQUE 840**

**LOT 1**

## S R TORQUE 840

BD: 03/05/18

Reg #: 19333027

#S A V 004 Density 4336  
**Bruin Torque 5261**  
Falcon Blackbird 6071

#GDAR Game Day 449  
**S R Beauty 333**  
S R Beauty 706

#S A V 8180 Traveler 004  
S A V May 7238  
#Connealy Dateline  
#Vermilion Blackbird 5044  
#Boyd New Day 8005  
#G D A R Miss Wix 474  
#Leachman Right Time  
M H Beauty 807

|         |     |
|---------|-----|
| BW      | 82  |
| ADJ 205 | 732 |
| WWR     | 104 |

| CE | BW  | WW | YW | Milk | Dam's Production |
|----|-----|----|----|------|------------------|
| 4  | 1.2 | 51 | 96 | 27   | 3/105            |

We lead off this year's sale with a tremendous Torque calf. He is thick made, nice-fronted, extremely long-bodied and has great foot structure. He is out of a really productive Game Day daughter that scores a 9 for udder and has achieved a BR of 3/97, a WR of 3/105 and a calving interval of 364 days. She has stuck to her AI service every year. In the pen, S R Torque 840 has a herd bull presence and is line-bred to one of the all-time great female-makers in the Angus breed, Leachman Right Time.



*Sheyna and  
Bruin Torque  
5261, Sire of  
Lot 1.*

*"Every decision we make is based on our customers.*

*If our customers don't benefit from our  
decisions, we won't benefit from our decisions.  
By taking a BALANCED APPROACH to GENETIC  
IMPROVEMENT, we hope to **manage our risk and  
help you manage yours.**"*



*Cooper and Bruin Torque 5261 • Sire of Lot 1*



*Lot 1 is line-bred to Leachman Right Time four times.*





**LOT 2 ~ S R CAPITALIST 848**

**LOT 2**

## S R CAPITALIST 848

BD: 03/06/18

Reg #: 19334311

#S A V Final Answer 0035  
#Connealy Capitalist 028  
Prides Pita of Conanga 8821

#Sitz Traveler 8180  
S A V Emulous 8145  
#C R A Bextor 872 5205 608  
Prides Trav of Conanga 6499  
#Baldridge Kaboom K243 KCF  
#Parka of Conanga 241  
Ox Bow Revival 1313  
S R O Lass 119

|         |     |
|---------|-----|
| BW      | 69  |
| ADJ 205 | 751 |
| WWR     | 107 |

#Connealy Thunder  
S R O Lass 550  
S R O Lass 383

| CE | BW   | WW | YW  | Milk | Dam's Production |
|----|------|----|-----|------|------------------|
| 13 | -1.3 | 61 | 103 | 21   | 2/99             |

**Recommended for use on heifers.** If this calf wouldn't be related to a lot of what we already have, he wouldn't be going anywhere. Here is a moderate-framed, easy-fleshing beef wagon that shows tremendous Angus breed character. He is a sure-fire heifer bull with a 69 lb. birth weight and his dam has a progeny BR of 2/94. She scores an 8 on udder quality and a perfect 10 on disposition. He was a standout all summer and is one of the best calving-ease bulls we have ever produced. **3/4 brother to Lots 3, 17 and 18.**



*Miss Wix 1209 of Mc Cumber • Granddam of Lot 3.*



**LOT 3 ~ S R CAPITALIST 845**

**LOT 3**

## S R CAPITALIST 845

BD: 03/06/18

Reg #: 19334313

#S A V Final Answer 0035  
#Connealy Capitalist 028  
Prides Pita of Conanga 8821

#Connealy Thunder  
S R Miss Wix 499  
Miss Wix 1209 of Mc Cumber

#Sitz Traveler 8180  
S A V Emulous 8145  
#C R A Bextor 872 5205 608  
Prides Trav of Conanga 6499  
#Baldridge Kaboom K243 KCF  
#Parka of Conanga 241  
Sitz JLS Emulation Ext 536P  
Miss Wix 7051 OF Mc Cumber

|         |     |
|---------|-----|
| BW      | 78  |
| ADJ 205 | 755 |
| WWR     | 107 |

| CE | BW  | WW | YW | Milk | Dam's Production |
|----|-----|----|----|------|------------------|
| 10 | 0.1 | 51 | 89 | 23   | 2/102            |

**Recommended for use on heifers.** The Capitalist X Thunder mating worked very well here and Lot 3 is a perfect example. This calving-ease sire weaned off with an Adj. 205 of 755 lbs. to ratio 108. His quiet-natured dam scores a 7 on udder quality and a perfect 10 for disposition. She carries a 366 day calving interval and is due again in the first cycle AI to Emblazon 702. **3/4 brother to Lots 2, 17 and 18.**





**LOT 4 ~ S R MOTIVE 822**

**LOT 4 S R MOTIVE 822**

BD: 03/04/18

Reg #: 19334294

HF Kodiak 5R  
#Soo Line Motive 9016  
TLA Beauty 5R

#S A V Resource 1441  
S R Miss Wix 680  
#S R Miss Wix 3110

Sandy Bar Advantage 43M  
Wilbar Ruby 955N  
RR 7407 Rainmaker 2154  
Terrlene Beauty 35F  
Rito 707 of Ideal 3407 7075  
S A V Blackcap May 4136  
#GDAR Game Day 449  
#Miss Wix 145 of Circle V

|         |     |
|---------|-----|
| BW      | 84  |
| ADJ 205 | 750 |
| WWR     | 108 |

| CE | BW  | WW | YW  | Milk | Dam's Production |
|----|-----|----|-----|------|------------------|
| 1  | 2.2 | 58 | 105 | 23   | 1/108            |

Certainly one of the top bulls in the sale, Lot 4 comes by the way of the Miss Wix cow family. His dam is a tremendous first-calf heifer by Resource and her dam and granddam both achieved Pathfinder status. He is wide-based, thick and deep. He is attractive fronted and is impressive from all angles. No holes here for maternal and performance. Granddam has a progeny WR of 4/108, great granddam has a progeny WR of 4/104 and his dam is due first cycle to her AI service with a Torque heifer calf.

**3/4 brother to Lots 5, 11, 12, 13, 14 and 15.**



*Lot 4 and his dam S R Miss Wix 680 on summer pasture.*

**LOT 5 S R MOTIVE 838**

BD: 03/05/18

Reg #: 19334301

HF Kodiak 5R  
#Soo Line Motive 9016  
TLA Beauty 5R

#S A V Resource 1441  
S R Erianna 631  
S R Erianna 335

Sandy Bar Advantage 43M  
Wilbar Ruby 955N  
RR 7407 Rainmaker 2154  
Terrlene Beauty 35F  
Rito 707 of Ideal 3407 7075  
S A V Blackcap May 4136  
#GDAR Game Day 449  
Erianna 1141 of Mc Cumber

|         |     |
|---------|-----|
| BW      | 84  |
| ADJ 205 | 743 |
| WWR     | 107 |

| CE | BW  | WW | YW  | Milk | Dam's Production |
|----|-----|----|-----|------|------------------|
| 1  | 1.9 | 59 | 106 | 21   | 1/107            |

Again, we have a Motive out of a Resource by Game Day. Lot 5 weaned off his dam with an Adj. 205 day weight of 743 lbs., to ratio 107. This combination seems to be working very well and gives us a maternal package that will leave a tremendous set of females, but will also put a set of scale-pounding steers on the ground, too! **3/4 brother to Lots 4, 11, 12, 13, 14 and 15.**



Photos of sale lots and many of the support photos were captured by Aaron or Sheyna. We are far from being professional livestock photographers, but we usually enjoy the experience – at least by the time we're done.





**LOT 6 ~ S R ADVANCE 830**

**LOT 6 S R ADVANCE 830**

BD: 03/05/18

Reg #: 19335905

#Koupal Juneau 797  
**Koupal Advance 28**  
Koupal Ebonette 734

#Connealy Thunder  
**S R Beauty 6146**  
S R Beauty 430

#O C C Juneau 807J  
Koupals Elba 187  
#S A V Initiative 4406  
#Koupals Ebonette 545  
#Baldrige Kaboom K243 KCF  
#Parka of Conanga 241  
#S A V Resource 1441  
S R Beauty 706

|         |     |
|---------|-----|
| BW      | 80  |
| ADJ 205 | 748 |
| WWR     | 108 |

| CE | BW   | WW | YW  | Milk | Dam's Production |
|----|------|----|-----|------|------------------|
| 11 | -0.1 | 63 | 110 | 27   | 1/108            |

**Recommended for use on heifers.** "Cowboy's Kind" is how I describe this first of the Advance sons. Advance, Thunder, Resource, Right Time are all in his maternally stacked pedigree. His first time dam ratioed 108, is due first cycle to her AI date with an Emblazon 702 bull calf. She is from the same Beauty cow family as the impressive Lot 1 bull. Take home Lot 6 to stack generations of **Maternal Power! 3/4 brother to Lots 7 and 38.**

**LOT 7 S R ADVANCE 896**

BD: 03/10/18

Reg #: 19335936

#Koupal Juneau 797  
**Koupal Advance 28**  
Koupal Ebonette 734

#Connealy Thunder  
**S R Clova Pride 519**  
S R Clova Pride 725

#O C C Juneau 807J  
Koupals Elba 187  
#S A V Initiative 4406  
#Koupals Ebonette 545  
#Baldrige Kaboom K243 KCF  
#Parka of Conanga 241  
#B C C Bushwacker 41-93  
M H Clova Pride 834

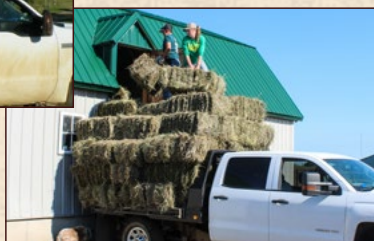
|         |     |
|---------|-----|
| BW      | 77  |
| ADJ 205 | 750 |
| WWR     | 107 |

| CE | BW   | WW | YW | Milk | Dam's Production |
|----|------|----|----|------|------------------|
| 12 | -0.6 | 61 | 99 | 27   | 2/104            |

**Recommended for use on heifers.** Those wanting calving-ease genetics with plenty of vigor need to get ahold of these Advance sons. Lot 7 is a deep, thick, long-spined bull that stems from our Clova Pride cow family. He weaned off his Thunder dam at 750 lbs. to ratio 107, and is recommended for heifers. His dam has bred to her first-cycle AI service every year and is due with an Emblazon 702 heifer. She maintains a 363-day calving interval. **3/4 brother to Lots 6 and 38.**



*Cassidy and Cooper immersed in the 'joy' of stacking square bales, circa July, 2009 (top) and July, 2018 (right).*



*Bigger kids. . .  
Bigger stack. . .  
Fewer snack breaks!*



*S R Clova Pride 725 • Granddam of Lot 7.*

*"Cattle that excel in the **convenience traits** are cattle that **SUPPORT THE BOTTOM LINE.**"*





*S R Polly 804 • Maternal granddam of Lots 8 and 9 and maternal great granddam of Lot 11.*

LOT 8

## S R ADVANCE 852

BD: 03/07/18

Reg #: 19335921

#Koupal Juneau 797  
**Koupal Advance 28**  
Koupal Ebonette 734

#Leachman Right Time  
**S R Polly 681**  
S R Polly 804

#O C C Juneau 807J  
Koupals Elba 187  
#S A V Initiative 4406  
#Koupals Ebonette 545  
#N Bar Emulation EXT  
Leachman Erica 0025  
#Sitz Alliance 6595  
#SR Polly 323

|         |     |
|---------|-----|
| BW      | 84  |
| ADJ 205 | 768 |
| WWR     | 111 |

| CE | BW  | WW | YW  | Milk | Dam's Production |
|----|-----|----|-----|------|------------------|
| 8  | 1.4 | 61 | 102 | 29   | 1/111            |

Here is an Advance son with more scale and frame; his performance off of his first-time dam shows it. Lot 3 weaned off with an Adj. 205 of 768 lbs. to be one of the heaviest calves from the first-calf heifers. His granddam is our ever-popular and dominant S R Polly 804. She has passed her maternal power on to her Right Time daughter. She did a great job with a 111 WR on her first calf, scoring a 10 for udder, a 10 for disposition and sticking to her AI service with a heifer calf coming by Raindance. **3/4 brother to Lots 9, 10, 40 and 41.**

LOT 9

## S R ADVANCE 846

BD: 03/06/18

Reg #: 19335910

#Koupal Juneau 797  
**Koupal Advance 28**  
Koupal Ebonette 734

#Leachman Right Time  
**S R Polly 6123**  
S R Polly 804

#O C C Juneau 807J  
Koupals Elba 187  
#S A V Initiative 4406  
#Koupals Ebonette 545  
#N Bar Emulation EXT  
Leachman Erica 0025  
#Sitz Alliance 6595  
#SR Polly 323

|         |     |
|---------|-----|
| BW      | 79  |
| ADJ 205 | 703 |
| WWR     | 101 |

| CE | BW  | WW | YW | Milk | Dam's Production |
|----|-----|----|----|------|------------------|
| 6  | 0.5 | 54 | 92 | 28   | 1/101            |

**Recommended for use on heifers.** A full brother in blood to Lot 8, this Advance son is from a Right Time daughter of Polly 804 who carries a progeny WR of 6/113 and is a prominent donor in our herd. Lot 9's dam scored a perfect 10 for udder quality and disposition and shows the fertility of the Polly cow family in the fact that she is due to first cycle AI service with a Raindance heifer. **3/4 brother to Lots 8, 10, 40 and 41.**

*"As input costs continue to rise, profitability in the beef business will be driven by cowherds that have the genetics to do more with less."*

LOT 10

## S R ADVANCE 878

BD: 03/08/18

Reg #: 19335913

#Koupal Juneau 797  
**Koupal Advance 28**  
Koupal Ebonette 734

#Leachman Right Time  
**S R Anita 6117**  
B C C Ambush Anita 41-158

#O C C Juneau 807J  
Koupals Elba 187  
#S A V Initiative 4406  
#Koupals Ebonette 545  
#N Bar Emulation EXT  
Leachman Erica 0025  
#Paramont Ambush 2172  
R C Anita T Bando 918903

|         |     |
|---------|-----|
| BW      | 75  |
| ADJ 205 | 675 |
| WWR     | 97  |

| CE | BW   | WW | YW | Milk | Dam's Production |
|----|------|----|----|------|------------------|
| 10 | -0.2 | 49 | 81 | 26   | 1/97             |

**Recommended for use on heifers.** Smooth-made, calving-ease bull out of a Right Time daughter that scored a 9 for udder quality and a perfect 10 for disposition. She is due to her AI service with a Raindance bull calf. His granddam is a full sister to one of the Angus breed's greatest sires, BCC Bushwacker 41-93. **3/4 brother to Lots 8, 9, 40 and 41.**



*Leachman Right Time, Maternal Grandsire of Lot 10.*



*BCC Bushwacker 41-93, Full brother to Lot 10's maternal granddam.*





**LOT 11 ~ S R MOTIVE 858**

**LOT 11 S R MOTIVE 858**

BD: 03/07/18

Reg #: 19334298

HF Kodiak 5R  
#Soo Line Motive 9016  
TLA Beauty 5R

#S A V Resource 1441  
**S R Polly 646**  
S R Polly 341

Sandy Bar Advantage 43M  
Wilbar Ruby 955N  
RR 7407 Rainmaker 2154  
Terlene Beauty 35F  
Rito 707 of Ideal 3407 7075  
S A V Blackcap May 4136  
#GDAR Game Day 449  
S R Polly 804

|         |     |
|---------|-----|
| BW      | 89  |
| ADJ 205 | 741 |
| WWR     | 107 |

| CE | BW  | WW | YW  | Milk | Dam's Production |
|----|-----|----|-----|------|------------------|
| 0  | 2.6 | 56 | 102 | 22   | 1/107            |

We used Motive for the traits commercial cattlemen need to be profitable: sound structure, fertility and realistic performance. Lot 11 is a deep, thick bull with above-average bone and good foot structure. His dam stems from the Polly cow family and ratioed 107 with her first calf and scored a 9 for udder and 7 for disposition. She is due to her AI service with a Torque bull. His granddam had a progeny WR of 3/101 and great granddam, S R Polly 804, has a progeny WR of 6/113. **3/4 brother to Lots 4, 5, 12, 13, 14 and 15.**

**LOT 12 S R MOTIVE 829**

BD: 03/05/18

Reg #: 19334293

HF Kodiak 5R  
#Soo Line Motive 9016  
TLA Beauty 5R

#S A V Resource 1441  
**S R Emma E 695**  
S R Emma E 339

Sandy Bar Advantage 43M  
Wilbar Ruby 955N  
RR 7407 Rainmaker 2154  
Terlene Beauty 35F  
Rito 707 of Ideal 3407 7075  
S A V Blackcap May 4136  
#Leachman Right Time  
Sitz Emma E 2552

|         |     |
|---------|-----|
| BW      | 84  |
| ADJ 205 | 738 |
| WWR     | 106 |

| CE | BW | WW | YW | Milk | Dam's Production |
|----|----|----|----|------|------------------|
| 5  | 2  | 55 | 98 | 20   | 1/106            |

Another Motive bull from a Resource daughter with a quiet disposition and great structure. He is attractive in his profile and long-bodied. His dam from the Emma E cow family at Sitz scored a perfect 10 for udder and a 10 for disposition. She is due with a first-cycle heifer calf by Torque. **3/4 brother to Lots 4, 5, 11, 13, 14 and 15.**



*S R Polly 804 • Maternal great granddam of Lot 11.*



*S R Travett 801 with S R Travett 666 • Maternal Power behind Lot 13.*





**LOT 13 ~ S R MOTIVE 865**

**LOT 13 S R MOTIVE 865**

BD: 03/07/18

Reg #: 19334295

HF Kodiak 5R  
#Soo Line Motive 9016  
TLA Beauty 5R

#S A V Resource 1441  
**S R Travett 666**  
S R Travett 801

Sandy Bar Advantage 43M  
Wilbar Ruby 955N  
RR 7407 Rainmaker 2154  
Terrlene Beauty 35F  
Rito 707 of Ideal 3407 7075  
S A V Blackcap May 4136  
#Sitz Alliance 6595  
S R Travett 501

|         |     |
|---------|-----|
| BW      | 84  |
| ADJ 205 | 789 |
| WWR     | 114 |

| CE | BW  | WW | YW  | Milk | Dam's Production |
|----|-----|----|-----|------|------------------|
| 2  | 2.5 | 63 | 110 | 23   | 1/114            |

This is one of my favorite Motives we have in the sale. He is stout in his design and wide from all angles. His Resource dam scored an 8 for udder and an 8 for disposition. She is due to her AI Service to Torque. Lot 13's dam is out of an Alliance daughter that has a progeny WR of 7/102 and his great granddam carries a progeny WR of 8/102. He was the heaviest 205 day weight of the first calvers and ratioed 114. The Cowboys will find this guy. **3/4 brother to Lots 4, 5, 11, 12, 14 and 15.**

**LOT 15 S R MOTIVE 892**

BD: 03/10/18

Reg #: 19334297

HF Kodiak 5R  
#Soo Line Motive 9016  
TLA Beauty 5R

#S A V Resource 1441  
**S R Lady Blue 661**  
S R Lady Blue 118

Sandy Bar Advantage 43M  
Wilbar Ruby 955N  
RR 7407 Rainmaker 2154  
Terrlene Beauty 35F  
Rito 707 of Ideal 3407 7075  
S A V Blackcap May 4136  
#O C C Paxton 730P  
#S R Lady Blue 631

|         |     |
|---------|-----|
| BW      | 92  |
| ADJ 205 | 671 |
| WWR     | 97  |

| CE | BW  | WW | YW | Milk | Dam's Production |
|----|-----|----|----|------|------------------|
| 0  | 2.4 | 49 | 89 | 21   | 1/97             |

Motive is known for producing cattle that are phenotypically sound: feet, udders, disposition all being superior traits. Lot 15 is moderate-framed and his dam is a daughter of our Lady Blue donor 118. 661 scored a 9 for udder quality and a 9 for disposition. She is due first-cycle to her AI service with a Torque heifer calf. **3/4 brother to Lots 4, 5, 11, 12, 13 and 14.**

**LOT 14 S R MOTIVE 835**

BD: 03/05/18

Reg #: 19334291

HF Kodiak 5R  
#Soo Line Motive 9016  
TLA Beauty 5R

#S A V Resource 1441  
**S R Beauty 6151**  
#S R Beauty 3215

Sandy Bar Advantage 43M  
Wilbar Ruby 955N  
RR 7407 Rainmaker 2154  
Terrlene Beauty 35F  
Rito 707 of Ideal 3407 7075  
S A V Blackcap May 4136  
#N Bar Emulation EXT  
M H Beauty 723

|         |     |
|---------|-----|
| BW      | 75  |
| ADJ 205 | 666 |
| WWR     | 96  |

| CE | BW  | WW | YW | Milk | Dam's Production |
|----|-----|----|----|------|------------------|
| 8  | 0.4 | 46 | 84 | 21   | 1/96             |

**Recommended for use on heifers.** This Motive X Resource combination gives a nice package of maternal and realistic performance in an attractive, stout phenotype. We really like the heifer calves of this same mating. We think they possess the traits we like and try to replicate from one generation to the next. SR Motive 835's Resource dam scored an 8 for udder and a 9 for disposition and is due to her first-cycle AI service to Torque. She stems from the Pathfinder cow Beauty 723 that has a progeny WR of 4/105. **3/4 brother to Lots 4, 5, 11, 12, 13 and 15.**



*Above: M H Beauty 723, Maternal great granddam of Lot 14.*



*Left: S R Lady Blue 118, Maternal granddam of Lot 15.*





**LOT 16 ~ S R CAPITALIST 849**

**LOT 16**

## S R CAPITALIST 849

BD: 03/06/18

Reg #: 19334314

#S A V Final Answer 0035  
#Connealy Capitalist 028  
Prides Pita of Conanga 8821

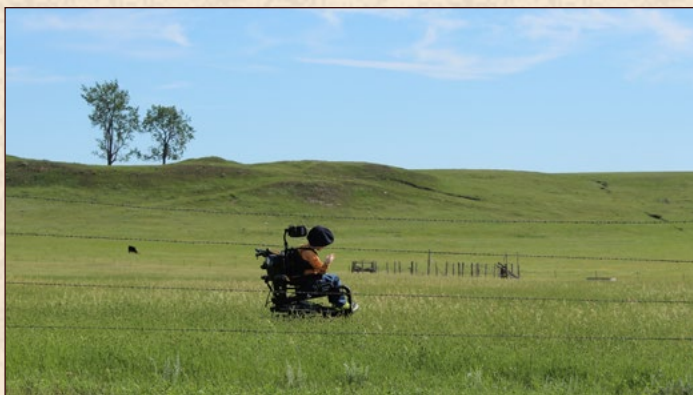
#H A Image Maker 0415  
S R Barabamere Nell 412  
Sitz Barabamere Nell 798

#Sitz Traveler 8180  
S A V Emulous 8145  
#C R A Bextor 872 5205 608  
Prides Trav of Conanga 6499  
#Hero 6267 of R R 2418  
H A Rito Blackcap 9038  
#O C C Bonanza 880B  
Sitz Barabamere Nell 2075

|         |     |
|---------|-----|
| BW      | 71  |
| ADJ 205 | 755 |
| WWR     | 107 |

| CE | BW   | WW | YW | Milk | Dam's Production |
|----|------|----|----|------|------------------|
| 13 | -1.5 | 60 | 99 | 24   | 3/101            |

**Recommended for use on heifers.** The first of three 3/4 brothers by Capitalist, Lot 16 weaned with an Adj. 205 of 755 lbs. to ratio 107 as his dam's third calf. She sports a progeny BR of 3/92 and a progeny WR of 3/101. S R Barabamere Nell 412 has stuck to her AI service every year with a 356-day calving interval and is due again first-cycle AI with a Raindance bull calf. S R Capitalist 849 is one of the top Capitalist sure-fire heifer bulls we have produced to date and a full sister raised one of the top Advance heifer calves this year that ratioed 119.



*'Six wheelin' through the pasture isn't as easy as Clint makes it look, but he loves to be out there with us as much as he can!*

**LOT 17**

## S R CAPITALIST 801

BD: 02/25/18

Reg #: 19334310

#S A V Final Answer 0035  
#Connealy Capitalist 028  
Prides Pita of Conanga 8821

#Connealy Thunder  
S R Betty 578  
S R Betty 3207

#Sitz Traveler 8180  
S A V Emulous 8145  
#C R A Bextor 872 5205 608  
Prides Trav of Conanga 6499  
#Baldridge Kaboom K243 KCF  
#Parka of Conanga 241  
#O C C Emblazon 854E  
M H Betty 916

|         |     |
|---------|-----|
| BW      | 75  |
| ADJ 205 | 774 |
| WWR     | 110 |

| CE | BW   | WW | YW | Milk | Dam's Production |
|----|------|----|----|------|------------------|
| 11 | -0.4 | 54 | 91 | 22   | 2/102            |

**Recommended for use on heifers.** Long, smooth, larger-outlined Capitalist son that has an EPD profile that you count on to calve easily. He weaned off his Thunder dam with an Adj. 205 of 774 to ratio 110. The Thunder daughters have been extremely fertile and S R Capitalist 801's dam has stuck to her AI service every year and is due to Emblazon 702 with a bull calf. **3/4 brother to Lots 2, 3 and 18.**

**LOT 18**

## S R CAPITALIST 8126

BD: 03/16/18

Reg #: 19334308

#S A V Final Answer 0035  
#Connealy Capitalist 028  
Prides Pita of Conanga 8821

#Connealy Thunder  
S R Sky Tee Lass 626  
S R Sky Tee Lass 431

#Sitz Traveler 8180  
S A V Emulous 8145  
#C R A Bextor 872 5205 608  
Prides Trav of Conanga 6499  
#Baldridge Kaboom K243 KCF  
#Parka of Conanga 241  
#S A V Resource 1441  
S R Sky Tee Lass 159

|         |     |
|---------|-----|
| BW      | 76  |
| ADJ 205 | 743 |
| WWR     | 107 |

| CE | BW   | WW | YW  | Milk | Dam's Production |
|----|------|----|-----|------|------------------|
| 11 | -0.3 | 58 | 101 | 22   | 1/107            |

**Recommended for use on heifers.** Another Capitalist X Thunder combination that has been very successful at producing calving-ease bulls and females that handle our environment and wean big calves in the fall. Lot 18's Thunder X Resource dam scored a 7 for udder quality and a 9 for disposition. She is due to her AI service with an Emblazon 702 heifer calf. **3/4 brother to Lots 2, 3 and 17.**



## LOT 19 S R ADVANCE 8142

BD: 03/27/18

Reg #: 19335943

#Koupal Juneau 797  
**Koupal Advance 28**  
 Koupal Ebonette 734  
 #GDAR Game Day 449  
**#S R Miss Wix 3110**  
 #Miss Wix 145 of Circle V

#O C C Juneau 807J  
 Koupals Elba 187  
 #S A V Initiative 4406  
 #Koupals Ebonette 545  
 #Boyd New Day 8005  
 #G D A R Miss Wix 474  
 S R Alliance 904  
 Miss Wix 6227 of Mc Cumber

|         |     |
|---------|-----|
| BW      | 67  |
| ADJ 205 | 762 |
| WWR     | 108 |

| CE | BW   | WW | YW  | Milk | Dam's Production |
|----|------|----|-----|------|------------------|
| 14 | -1.5 | 60 | 103 | 30   | 4/108            |

**Recommended for use on heifers.** S R Advance 8142 is the youngest bull in the sale, but is an exceptionally high quality bull. His second-generation Pathfinder dam is perfect footed and carries a progeny WR of 4/108 with an udder score of 7 and a perfect disposition score of 10. She has stuck to her AI service every year and is due with a first-cycle AI heifer calf by Torque. He exploded from his 67 lbs. birth weight to wean off with an Adj. 205 of 762 lbs., ratioing 108. **3/4 brother to Lot 20.**

## LOT 21 S R ADVANCE 897

BD: 03/10/18

Reg #: 19335926

#Koupal Juneau 797  
**Koupal Advance 28**  
 Koupal Ebonette 734  
 #Connealy Capitalist 028  
**S R Burgette 634**  
 S R Burgette 446

#O C C Juneau 807J  
 Koupals Elba 187  
 #S A V Initiative 4406  
 #Koupals Ebonette 545  
 #S A V Final Answer 0035  
 Prides Pita of Conanga 8821  
 Ox Bow Revival 1313  
 S R Burgette 240

|         |     |
|---------|-----|
| BW      | 79  |
| ADJ 205 | 727 |
| WWR     | 105 |

| CE | BW   | WW | YW  | Milk | Dam's Production |
|----|------|----|-----|------|------------------|
| 13 | -0.1 | 63 | 108 | 26   | 1/105            |

**Recommended for use on heifers.** Double-digit calving-ease and a 79 lbs. birth weight make this moderate-framed dude a candidate for turn-out with heifers. Calf vigor is important to survival and this bull is three generations of sires that excel for calf vigor at birth.

## LOT 20 S R ADVANCE 885

BD: 03/09/18

Reg #: 19335945

#Koupal Juneau 797  
**Koupal Advance 28**  
 Koupal Ebonette 734  
 #GDAR Game Day 449  
**#S R Beauty 230**  
 S R Beauty 605

#O C C Juneau 807J  
 Koupals Elba 187  
 #S A V Initiative 4406  
 #Koupals Ebonette 545  
 #Boyd New Day 8005  
 #G D A R Miss Wix 474  
 #O C C Emblazon 854E  
 M H Beauty 807

|         |     |
|---------|-----|
| BW      | 81  |
| ADJ 205 | 714 |
| WWR     | 102 |

| CE | BW  | WW | YW | Milk | Dam's Production |
|----|-----|----|----|------|------------------|
| 9  | 0.9 | 56 | 95 | 27   | 5/107            |

**Recommended for use on heifers.** Here is one for the Cowboys that will also work on heifers. He is a big, level-topped rascal that is heavy muscled and masculine at an early age. He is out of a Pathfinder Game Day daughter that has a progeny WR of 5/107 and his maternal granddam has a progeny WR of 5/106. Beauty 230 scored a 7 for udder and an 8 for disposition. She has bred to her AI service every year of her life and is due with a first-cycle heifer. **3/4 brother to Lot 19.**

## LOT 22 S R ADVANCE 869

BD: 03/08/18

Reg #: 19335933

#Koupal Juneau 797  
**Koupal Advance 28**  
 Koupal Ebonette 734  
 #S A V Resource 1441  
**S R Clova pride 525**  
 S R Clova Pride 202

#O C C Juneau 807J  
 Koupals Elba 187  
 #S A V Initiative 4406  
 #Koupals Ebonette 545  
 Rito 707 of Ideal 3407 7075  
 S A V Blackcap May 4136  
 #O C C Paxton 730P  
 S R Clova Pride 725

|         |     |
|---------|-----|
| BW      | 81  |
| ADJ 205 | 765 |
| WWR     | 109 |

| CE | BW  | WW | YW  | Milk | Dam's Production |
|----|-----|----|-----|------|------------------|
| 12 | 0.1 | 65 | 109 | 26   | 2/105            |

**Recommended for use on heifers.** Nice calving-ease bull that has it all: phenotype, pedigree, EPD profile and performance. His easy-natured dam has a progeny WR of 2/105 with a progeny BR of 2/90. S R Advance 869's great granddam was a highlight of our 2016 female sale with a progeny WR of 8/101.



*Bull & Bred Female Sale*  
**DEC. 3, 2019**  
 STOCKMEN'S WEST - DICKINSON, ND

*Selling:* **65**  
 COMING  
 2-YR-OLD  
 ANGUS BULLS  
 and  
**500+**  
 BRED FEMALES

Last year's sale was a resounding success and we are **EXCITED TO HELP OUR CUSTOMERS** market their females in 2019, as space allows. To participate in the 2019 sale, females must be out of and bred to Strommen Ranch, Talkington Angus or Best Angus genetics.

We'll also sell 65 stout, rugged, fully guaranteed, coming 2 year-old registered Angus bulls, including 30 from Strommen Ranch. Individually, we strive to produce balanced trait, maternally oriented Angus cattle with phenotypic appeal, good feet, great udders and outstanding docility, which **MEANS FEWER PROBLEMS FOR YOU!**



*Arvon & Sherry Strommen*  
 FORT RICE, ND  
 (701) 290-7988



*Sherry & Amanda Talkington*  
 BELFIELD, ND  
 (701) 290-7222



*Pete & Vannita Best*  
 WATFORD CITY, ND  
 (701) 570-6959



*S R Clova Pride 202, maternal granddam of Lot 22, pictured with her 2017 bull calf by Emulation XXP.*



*S R Clova Pride 725, Great granddam of Lot 22.*



# CATTLE THAT *Thrive* IN A GRASS-BASED, NO-FRILLS ENVIRONMENT

From the beginning, we've been laser-focused on producing Angus cattle that prosper in a no-frills environment: moderate-framed, high-volume, easy-fleshing cows with good feet, great udders and a quiet disposition. We expect our cows to re-breed quickly and wean a calf that is a high percentage of its dam's bodyweight, year after year. Our cows have consistently increased weaning weights while increasing the percentage of cows that re-breed in the first 21 days. You won't find any lick tubs or creep feeders hidden behind the hills of our pastures. **Cattle that can do more with less – that's our definition of MATERNAL POWER!**

From the beginning, we've also been very particular about the sires we bring into the mix. **We hate surprises.** That's why we use a small group of proven, balanced-trait AI sires on our cows each year. We conduct a tremendous amount of research – evaluating the generations of genetics behind a bull, as well as his progeny – before we commit. We believe that a powerful, consistent cowherd can't be built with a "little-bit-of-this-little-bit-of-that" approach to sire selection. You must have a plan and a clear vision of what your ideal cow is.



The Strommens from Left: Cassidy, Aaron, Clint, Sheyna & Cooper

**We know what it is like to start from scratch** – and how important it is to make cattle work for you, instead of the other way around. As your seedstock provider, we want your operations to be profitable and sustainable for generations – regardless of the market. **We believe you can achieve this by developing your own herd of efficient, problem-free livestock backed by Strommen Ranch MATERNAL POWER Angus genetics.**

We thank you for your interest in our Maternal Power Angus Bull Sale, **Feb. 23, 2019**, starting at 3 p.m. at the ranch, Fort Rice, N.D., and invite you to the Badlands Angus Alliance Bull & Bred Females Sale in December. Our bulls' pedigrees are stacked with six to eight generations of proven, balanced, female-making genetics and we stand behind them with an industry-leading guarantee, exceptional customer service, and a powerful, maternally oriented herd.





# PROVEN *Balanced* COW-MAKERS:

Our cattle are backed by generations of proven, efficient genetics, emphasizing calving ease, fleshing ability, udder quality, disposition, structure and fertility.



"IF YOU CAN'T PUT YOUR HEAD ON YOUR PILLOW AT NIGHT AND VISUALIZE YOUR IDEAL COW, THE ODDS OF YOU MAKING ONE ARE VERY, VERY SLIM."

"I AM ANGUS: ED OLIVER, GEORGIA"



**CUSTOMER SERVICE • Every decision we make is based on our customers.** By taking a BALANCED APPROACH to Genetic Improvement, we hope to manage our risk and help you manage yours. We also strive to help you manage your risk by developing our bulls responsibly and by standing behind them with one of the **strongest guarantees in the industry.**

Our customer service goes beyond genetic improvement and guarantees. We are proud of the herds our customers are developing with Strommen Ranch genetics and that is why **we help them capture additional value for their females** through our exclusive Commercial Female Listing and the Badlands Angus Alliance Bull & Bred Female Sale held annually in Dickinson. Through the Badlands Angus Alliance, we helped customers of Strommen Ranch, Best Angus and Talkington Angus **market 431 bred females** influenced by our genetics and that number will grow in 2019!

We invite you to put Strommen Ranch Maternal Power Angus genetics and our exclusive customer service to work for YOU! **Contact Aaron (701) 290-7983 or visit [www.StrommenRanch.com](http://www.StrommenRanch.com).**







## LOT 23 ~ S R EMULATION XXP 8122

*Flush Brothers*

### LOT 23 S R EMULATION XXP 8122

BD: 03/14/18

Reg #: 19335744

BW 99

| CE | BW  | WW | YW | Milk | Dam's Production | ADJ 205 | WWR | ET |
|----|-----|----|----|------|------------------|---------|-----|----|
| 6  | 1.2 | 55 | 94 | 19   | 4/116            |         |     |    |

### LOT 24 S R EMULATION XXP 816

BD: 03/03/18

Reg #: 19335741

BW 78

| CE | BW  | WW | YW | Milk | Dam's Production | ADJ 205 | WWR | ET |
|----|-----|----|----|------|------------------|---------|-----|----|
| 6  | 1.2 | 55 | 94 | 19   | 4/116            |         |     |    |

### LOT 25 S R EMULATION XXP 8108

BD: 03/12/18

Reg #: 19335736

BW 83

| CE | BW  | WW | YW | Milk | Dam's Production | ADJ 205 | WWR | ET |
|----|-----|----|----|------|------------------|---------|-----|----|
| 6  | 1.2 | 55 | 94 | 19   | 4/116            |         |     |    |

### LOT 26 S R EMULATION XXP 863

BD: 03/07/18

Reg #: 19335738

#N Bar Emulation EXT  
Sinclair Emulation XXP  
#N Bar Primrose Y3051

#O C C Paxton 730P  
#S R Bonnie Belle 104  
#S R Bonnie Belle 980

#Emulation N Bar 5522  
N Bar Primrose 2424  
#N Bar Emulation EXT  
#N Bar Primrose 2429  
O C C Focus 813F  
O C C Blackbird 736K  
S R Canyon 712  
MH Bonnie Belle 945

| BW      | 84  |
|---------|-----|
| ADJ 205 | 669 |
| WWR     | ET  |

| CE | BW  | WW | YW | Milk | Dam's Production |
|----|-----|----|----|------|------------------|
| 6  | 1.2 | 55 | 94 | 19   | 4/116            |

A set of ET bulls that are full brothers to the high-selling Lot 1 of the 2018 sale. These bulls will give you performance and leave a maternal legacy with their daughters. Their deceased Pathfinder dam was a forage-efficient powerhouse that posts a progeny WR of 4/116 and has been the mother to many top sellers here. She will continue to leave her mark at Strommen Ranch through the females she has left behind. She was the dam to the lead-off and top-selling bulls of the 2016 sale and the two high-sellers from the 2017 sale, along with numerous other sons working in some great herds across North Dakota and Montana. Their Pathfinder granddam had a progeny WR of 3/109 with a 370-day calving interval.



*O C C Paxton  
730P,  
Maternal  
 grandsire of  
Lots 23-26.*



*The high-seller  
from our 2018  
sale is a full  
brother to  
Lots 23-26*





## LOT 27 ~ S R EMULATION XXP 8117

### LOT 27 S R EMULATION XXP 8117

BD: 03/13/18

Reg #: 19332629

#N Bar Emulation EXT  
**Sinclair Emulation XXP**  
#N Bar Primrose Y3051

#S A V Resource 1441  
**S R Clova Pride 5105**  
S R Clova Pride 260

#Emulation N Bar 5522  
N Bar Primrose 2424  
#N Bar Emulation EXT  
#N Bar Primrose 2429  
Rito 707 of Ideal 3407 7075  
S A V Blackcap May 4136  
#GDAR Game Day 449  
S R Clova Pride 958

|         |     |
|---------|-----|
| BW      | 84  |
| ADJ 205 | 798 |
| WWR     | 114 |

| CE | BW  | WW | YW  | Milk | Dam's Production |
|----|-----|----|-----|------|------------------|
| 4  | 1.5 | 65 | 116 | 18   | 2/107            |

"BEEF BULL" is how I describe Lot 27. This bull is made for efficient, grass-based beef production. He has as much Angus breed character as any bull selling. He is moderate-framed, strong-topped, thick, stout and wide-based. His Resource dam brought him in with a 798 lbs. Adj. 205 day weight to ratio 114 and she has stuck to her AI service every year and is due with a Torque heifer calf. **3/4 brother to Lots 28, 29 and 30.**

### LOT 28 S R EMULATION XXP 8111

BD: 03/12/18

Reg #: 19332630

#N Bar Emulation EXT  
**Sinclair Emulation XXP**  
#N Bar Primrose Y3051

#S A V Resource 1441  
**S R Rachel 594**  
K N M Rachel 070

#Emulation N Bar 5522  
N Bar Primrose 2424  
#N Bar Emulation EXT  
#N Bar Primrose 2429  
Rito 707 of Ideal 3407 7075  
S A V Blackcap May 4136  
Rockin Horse Tailor Made 456  
K N M Rachel 430

|         |     |
|---------|-----|
| BW      | 85  |
| ADJ 205 | 664 |
| WWR     | 94  |

| CE | BW  | WW | YW | Milk | Dam's Production |
|----|-----|----|----|------|------------------|
| 4  | 1.3 | 44 | 85 | 17   | 2/94             |

We are going to calve the first set of XXP females this spring and it is hard to contain the excitement. Lot 33 will leave you with a great set of females that will drive profitability and excel at the traits that matter at the ranch level. His dam has stuck to her AI service every year. She scored a 9 on udder quality and 7 on disposition with a 370-day calving interval. **3/4 brother to Lots 27, 29 and 30.**

### LOT 29 S R EMULATION XXP 8101

BD: 03/07/18

Reg #: 19335700

#N Bar Emulation EXT  
**Sinclair Emulation XXP**  
#N Bar Primrose Y3051

#S A V Resource 1441  
**S R Beauty 447**  
S R Beauty 196

#Emulation N Bar 5522  
N Bar Primrose 2424  
#N Bar Emulation EXT  
#N Bar Primrose 2429  
Rito 707 of Ideal 3407 7075  
S A V Blackcap May 4136  
S R Alliance 908  
S R Beauty 605

|         |     |
|---------|-----|
| BW      | 88  |
| ADJ 205 | 666 |
| WWR     | 95  |

| CE | BW  | WW | YW  | Milk | Dam's Production |
|----|-----|----|-----|------|------------------|
| 1  | 2.7 | 53 | 102 | 15   | 3/96             |

When trying to improve weaning weight, the one thing you can select for that will add weight the fastest is body length. The XXP cattle are long-spined and will fool you when they step on the scale. XXP, Resource, Alliance and Emblazon all are members of Lot 29's pedigree. **3/4 brother to Lots 27, 28 and 30.**

### LOT 30 S R EMULATION XXP 862

BD: 03/07/18

Reg #: 19335700

#N Bar Emulation EXT  
**Sinclair Emulation XXP**  
#N Bar Primrose Y3051

#S A V Resource 1441  
**S R Beauty 560**  
S R Beauty 706

#Emulation N Bar 5522  
N Bar Primrose 2424  
#N Bar Emulation EXT  
#N Bar Primrose 2429  
Rito 707 of Ideal 3407 7075  
S A V Blackcap May 4136  
#Leachman Right Time  
M H Beauty 807

|         |     |
|---------|-----|
| BW      | 79  |
| ADJ 205 | 616 |
| WWR     | 88  |

| CE | BW | WW | YW | Milk | Dam's Production |
|----|----|----|----|------|------------------|
| 4  | 1  | 46 | 88 | 15   | 2/94             |

A long-bodied, smooth-made individual with a maternal pedigree that includes some of the best female-makers the Angus breed has ever known. His dam has stuck to her first-cycle AI service every year and is due to Torque. **3/4 brother to Lots 27, 28 and 29.**





## LOT 31 ~ S R SEEDSTOCK 884

*Flush Brothers*

**LOT 31**

### S R SEEDSTOCK 884

BD: 03/09/18

Reg #: 19348521

| CE | BW  | WW | YW  | Milk | Dam's Production | ADJ 205 | BW  |
|----|-----|----|-----|------|------------------|---------|-----|
| 7  | 1.2 | 60 | 104 | 27   | 5/103            | 744     | 98  |
|    |     |    |     |      |                  | WWR     | 100 |

**LOT 32**

### S R SEEDSTOCK 806

BD: 03/01/18

Reg #: 19348520

S A V Registry 2831  
**S A V Seedstock 4838**  
 S A V Blackcap May 4136

#S A V Final Answer 0035  
**Boyd Forever Lady 9002**  
 Boyd Forever Lady 5125

Rito 707 of Ideal 3407 7075  
 S A V Madame Pride 0075  
 #S A V 8180 Traveler 004  
 #S A V May 2397  
 #Sitz Traveler 8180  
 S A V Emulous 8145  
 #Wulffs Ext 6106  
 S V F Forever Lady 57D

| BW      | 68  |
|---------|-----|
| ADJ 205 | 700 |
| WWR     | 99  |

| CE | BW   | WW | YW | Milk | Dam's Production |
|----|------|----|----|------|------------------|
| 7  | -0.5 | 57 | 99 | 26   | 5/103            |

A little different pedigree for our long-time customers in these Seedstock ET sons, but we think you'll like them. They are long-bodied, bigger outlined bulls that have great dispositions. They are backed by a tremendous female that is a full sister to the Genex sire Boyd Resume 9008. Her dam, 5125, is phenotypically as good as you can make. These bulls will make great females and still have tremendous performance. You'll find some of the who's who of Angus females stacked in this pedigree.



*Strommen Ranch delivers! We truly enjoy visiting our customers at their ranches and seeing our genetics at work in their herds.*



## LOT 32 ~ S R SEEDSTOCK 806

*The females behind Lots 31-32*



Boyd Forever Lady 9002  
 Dam of Lots 31-32.



Boyd Forever Lady 5125  
 Maternal granddam.



SAV Blackcap May 4136  
 Paternal granddam.



SAV Madame Pride 0075  
 Paternal great granddam.



## LOT 33 S R TORQUE 8106

BD: 03/11/18

Reg #: 19333025

#S A V 004 Density 4336  
**Bruin Torque 5261**  
Falcon Blackbird 6071

#Sitz Alliance 6595  
**#S R Everelda Entense 376**  
Sitz Everelda Entense 4968

#S A V 8180 Traveler 004  
S A V May 7238  
#Connealy Dateline  
#Vermilion Blackbird 5044  
#Sitz Traveler 8180  
#Sitz Barbaramere Jet 2698  
#High Valley 4C6 Ambush  
Sitz Everelda Entense 023

|         |     |
|---------|-----|
| BW      | 85  |
| ADJ 205 | 757 |
| WWR     | 108 |

| CE | BW  | WW | YW  | Milk | Dam's Production |
|----|-----|----|-----|------|------------------|
| 2  | 2.5 | 55 | 103 | 29   | 4/107            |

Here is a Torque son that has performance and maternal traits tied into one neat package. He ratioed 108 as the fourth calf from his Pathfinder dam. She scored an 8 for udder quality and a 10 for disposition. She has stuck every year to her AI service - even after being flushed this year. She will calve to her AI date with a Raindance heifer calf. I can't say enough about this cow and the qualities she possesses, not only for production, but also phenotype. Keep every female from this bull.



*This year Aaron called on Cassidy and Cooper to help draft footnotes. Here, they are assessing the phenotype and docility of bulls in the offering.*



## LOT 34 S R TORQUE 8113

BD: 03/13/18

Reg #: 19333023

#S A V 004 Density 4336  
**Bruin Torque 5261**  
Falcon Blackbird 6071

#GDAR Game Day 449  
**S R Dorothy Ideal 3116**  
S R Dorothy Ideal 102

#S A V 8180 Traveler 004  
S A V May 7238  
#Connealy Dateline  
#Vermilion Blackbird 5044  
#Boyd New Day 8005  
#G D A R Miss Wix 474  
#O C C Paxton 730P  
S R Dorothy 972

|         |     |
|---------|-----|
| BW      | 84  |
| ADJ 205 | 754 |
| WWR     | 107 |

| CE | BW  | WW | YW  | Milk | Dam's Production |
|----|-----|----|-----|------|------------------|
| 5  | 1.4 | 56 | 103 | 28   | 3/109            |

Another high ratioing calf at weaning by Torque and from a dam with a progeny WR of 3/109. She scores an 8 for udder quality and a 10 on disposition.

## LOT 35 S R TORQUE 814

BD: 03/03/18

Reg #: 19333004

#S A V 004 Density 4336  
**Bruin Torque 5261**  
Falcon Blackbird 6071

#Connealy Thunder  
**S R Clova Pride 523**  
#S R Clova Pride 315

#S A V 8180 Traveler 004  
S A V May 7238  
#Connealy Dateline  
#Vermilion Blackbird 5044  
#Baldridge Kaboom K243 KCF  
#Parka of Conanga 241  
#O C C Paxton 730P  
S R Clova Pride 725

|         |     |
|---------|-----|
| BW      | 89  |
| ADJ 205 | 674 |
| WWR     | 96  |

| CE | BW  | WW | YW | Milk | Dam's Production |
|----|-----|----|----|------|------------------|
| 3  | 1.9 | 50 | 94 | 26   | 2/97             |

A Torque calf that stems from the Clova Pride cow family. We flushed Lot 35's Pathfinder granddam this spring. S R Clova Pride 315 has a progeny WR of 4/109 and her dam has a progeny WR of 8/101. His dam has stuck to her first-cycle AI service every year. Capture the Maternal Power behind this smooth-made, attractive Torque son.

# Maternal POWER Promotes Profitability

We've said it for years: true profitability in the beef business is driven by cattle that have the **Maternal Power** to do more with less.

As your seedstock provider, we want your operation to be profitable and sustainable for generations – regardless of the market. That is why we require our stock to thrive in a Northern Plains, grass-based environment with minimal supplementation. **They must do more with less.**

Strommen Ranch cows must calve annually and wean a calf that is a high percentage of its dam's bodyweight. They must also possess the basic phenotypic traits to cover country, breed on time, have the smarts and mothering ability to do it on their own, all the while performing under the conditions that Mother Nature has dealt us. We select for fertility, longevity, sound structure and realistic performance in the cowherd.

Strommen Ranch calves grow out on grass. We DO NOT creep feed or use lick tubs. It would be easy for us to consistently achieve 800-900 lb. weaning weights if we used creep feed, but we choose to run our seedstock operation like a real-world

commercial operation. We want your calves to perform in your environment – that's why we ask our bulls and females to shine in a similar one. Our cows have consistently improved weaning weights, while increasing the percentage of cows that re-breed in the first 21 days, maintaining mature cow size and placing downward pressure on our input costs. We are continually asking our cattle to do more with less.

Similarly, in our development program we also begin with the end in mind. We don't need to know which calf can eat the most – we need to know which calf can do the most in his natural environment. **This helps us protect your investment in a Strommen Ranch bull.** In order for you to have a bull that lasts and has longevity, he should not be pushed at an early age. It is our intention to identify optimum gains. We hope to have allowed the bulls to express their genetic potential without pushing so much energy through them that feet, hock or liver damage occur. Our ultimate goal is to have the bulls range-ready, sound-footed and ready to go to work for you.

As your seedstock source, we are fully committed to producing the type of cattle that will positively impact your bottomline. Having traveled extensively as an A.I. rep. for Genex and looking at cowherds throughout the region, I have learned that cattle with phenotypic appeal, fleshing ability and fertility are the most profitable.

**Cattle that breed early in the cycle, are structurally sound and can raise big calves efficiently in a practical environment with minimal inputs are the kind of cattle we produce and believe will have a positive impact on your bottomline now and into the future.**







*Mystic Hill  
Elba 746,  
Dam of  
Lot 36.*

## LOT 37 S R EMULATION XXP 876

BD: 03/08/18

Reg #: 19335727

#N Bar Emulation EXT  
**Sinclair Emulation XXP**  
#N Bar Primrose Y3051

#Emulation N Bar 5522  
N Bar Primrose 2424  
#N Bar Emulation EXT  
#N Bar Primrose 2429  
O C C Focus 813F  
O C C Blackbird 736K  
Oak Hollow 7709 of 1318 1118  
Farview Lady Blue 2228

#O C C Paxton 730P  
#S R Lady Blue 203  
#S R Lady Blue 631

|         |     |
|---------|-----|
| BW      | 85  |
| ADJ 205 | 702 |
| WW      | 100 |

| CE | BW  | WW | YW | Milk | Dam's Production |
|----|-----|----|----|------|------------------|
| 4  | 1.2 | 55 | 95 | 17   | 5/104            |

Nice set of female-making bulls by XXP towards the end of the sale. This bull is made for efficient beef production in a grass system. He is likely the biggest-barreled bull with as much rib shape and body depth. His second generation Pathfinder dam is a certified belly-dragger that has a progeny WR of 5/104 and his Pathfinder granddam has a progeny WR of 7/106.

## LOT 39 S R ADVANCE 881

BD: 03/08/18

Reg #: 19335928

#Koupal Juneau 797  
**Koupal Advance 28**  
Koupal Ebonette 734

#O C C Juneau 807J  
Koupals Elba 187  
#S A V Initiative 4406  
#Koupals Ebonette 545  
#S A V Final Answer 0035  
Prides Pita of Conanga 8821  
Ox Bow Revival 1313  
S R Beauty 218

#Connealy Capitalist 028  
**S R Beauty 627**  
S R Beauty 469

|         |     |
|---------|-----|
| BW      | 85  |
| ADJ 205 | 696 |
| WW      | 100 |

| CE | BW  | WW | YW  | Milk | Dam's Production |
|----|-----|----|-----|------|------------------|
| 9  | 1.1 | 62 | 107 | 24   | 1/100            |

Another well-balance Advance son that will make females with perfect udders.

## LOT 41 S R ADVANCE 867

BD: 03/07/18

Reg #: 19335915

#Koupal Juneau 797  
**Koupal Advance 28**  
Koupal Ebonette 734

#O C C Juneau 807J  
Koupals Elba 187  
#S A V Initiative 4406  
#Koupals Ebonette 545  
#N Bar Emulation EXT  
Leachman Erica 0025  
#O C C Traveler 723Z  
Farview Lady Erica 282

#Leachman Right Time  
**S R Lady Erica 6113**  
#Farview Lady Erica 756

|         |     |
|---------|-----|
| BW      | 73  |
| ADJ 205 | 697 |
| WW      | 100 |

| CE | BW   | WW | YW | Milk | Dam's Production |
|----|------|----|----|------|------------------|
| 11 | -0.3 | 50 | 83 | 29   | 1/100            |

**Recommended for use on heifers.** From a first-calf heifer weaned near 700 lbs. and from a dam that scored a perfect 10 for udder quality and a perfect 10 for disposition. His fertile dam stuck again to her AI service with a Raindance heifer and his Pathfinder granddam has a progeny BR of 8/100 and a progeny WR of 8/106 with a 370-day calving interval on 8 calves before she went into embryo production. **3/4 brother to Lots 8, 9, 10 and 40.**

## LOT 36 S R EMULATION XXP 8114

BD: 03/13/18

Reg #: 19335754

#N Bar Emulation EXT  
**Sinclair Emulation XXP**  
#N Bar Primrose Y3051

#H A Image Maker 0415  
#**Mystic Hill Elba 746**  
Mystic Hill Elba 5T20

#Emulation N Bar 5522  
N Bar Primrose 2424  
#N Bar Emulation EXT  
#N Bar Primrose 2429  
#Hero 6267 of R R 2418  
H A Rito Blackcap 9038  
#BT Right Time 24J  
Mystic Hill Elba 013

|         |     |
|---------|-----|
| BW      | 83  |
| ADJ 205 | 676 |
| WW      | 100 |

| CE | BW  | WW | YW | Milk | Dam's Production |
|----|-----|----|----|------|------------------|
| 5  | 0.4 | 50 | 90 | 23   | 5/109            |

Here is a bull we think could work on heifers, if you keep an eye on them. His Pathfinder dam shows a progeny BR of 5/88 and a progeny WR of 5/109. Elba 746 is a super, long-bodied, massive female and this bull is loaded with female makers throughout his pedigree: XXP, Image Maker and Right Time 24J. Help yourself to one of the best female-making bulls in the sale!

## LOT 38 S R ADVANCE 891

BD: 03/09/18

Reg #: 19335938

#Koupal Juneau 797  
**Koupal Advance 28**  
Koupal Ebonette 734

#Connealy Thunder  
**S R Lady Blue 512**  
S R Lady Blue 323

#O C C Juneau 807J  
Koupals Elba 187  
#S A V Initiative 4406  
#Koupals Ebonette 545  
#Baldridge Kaboom K243 KCF  
#Parka of Conanga 241  
#O C C Paxton 730P  
#S R Lady Blue 631

|         |     |
|---------|-----|
| BW      | 86  |
| ADJ 205 | 733 |
| WW      | 104 |

| CE | BW  | WW | YW  | Milk | Dam's Production |
|----|-----|----|-----|------|------------------|
| 8  | 1.4 | 58 | 100 | 27   | 2/106            |

Nicely balanced bull that is out of an even-tempered Thunder daughter with a progeny WR of 2/106. His granddam has a progeny WR of 3/101 and his Pathfinder great granddam has a progeny WR of 7/102. He weaned off with an Adj. 205 of 733 lbs. and his dam has stuck to her first-cycle AI service every year. She is due with an Emblazon 702 bull. **3/4 brother to Lots 6 and 7.**

## LOT 40 S R ADVANCE 866

BD: 03/07/18

Reg #: 19335900

#Koupal Juneau 797  
**Koupal Advance 28**  
Koupal Ebonette 734

#Leachman Right Time  
**S R Lady Erica 6148**  
#Farview Lady Erica 756

#O C C Juneau 807J  
Koupals Elba 187  
#S A V Initiative 4406  
#Koupals Ebonette 545  
#N Bar Emulation EXT  
Leachman Erica 0025  
#O C C Traveler 723Z  
Farview Lady Erica 282

|         |     |
|---------|-----|
| BW      | 86  |
| ADJ 205 | 721 |
| WW      | 104 |

| CE | BW  | WW | YW | Milk | Dam's Production |
|----|-----|----|----|------|------------------|
| 6  | 1.9 | 54 | 91 | 29   | 1/104            |

A pair of full brothers in blood out of Advance and a nicely made Right Time daughter that scored a 10 on udder and a 9 on disposition. These Right Time daughters are great on their feet, have wonderful dispositions and perfect udders. Keep every female. His dam's progeny WR is 1/104; his Pathfinder granddam posts a progeny BR of 8/100 and a progeny WR of 8/106 with a 370-day calving interval. His dam is due to first-cycle AI with a Raindance heifer calf. **3/4 brother to Lots 8, 9, 10 and 41.**



*Farview  
Lady Erica  
756,  
Dam of  
Lots 40-41.*





## AT STROMMEN RANCH, WE MEASURE OUR SUCCESS BY 3 THINGS:

- 1 **The ability of our cowherd to set the bar for Maternal Power.**  
They must go out and work every day, maintain a tight calving interval through tremendous fertility and raise big calves year after year – without being pampered.
- 2 **Watching our customers reap the rewards** of using our genetics and the demand we've helped build for their feeder calves and their replacement females, as well.
- 3 The lasting relationships we are building with our customers and the reputation that comes from helping them reach their goals of developing successful and profitable cowherds. **Our customers' success remains our highest priority.**

## FOR OUR VALUED CUSTOMERS, WE OFFER:

- Spring Sale: Yearling Bulls • Fall Sale: Coming 2-Yr-Old Bulls
- Free delivery within 500 miles of Strommen Ranch.
- Full 90-day breeding season guarantee.
- Freeze branded.
- Fertility tested.
- Bulls that aren't overfed.
- Discounts for volume purchases and repeat buyers.
- Exclusive commercial female marketing assistance.
- Badlands Angus Alliance Sale • Commercial Female Listing







Time-Sensitive Material. Please Deliver Immediately!

Aaron & Sheyna Strommen  
6485 County Road 80  
Fort Rice, N.D. 58554

[www.StrommenRanch.com](http://www.StrommenRanch.com)

Return Service Requested



LOT 1

**STROMMEN**  
RANCH

*HARD WORKING, MODERATE-FRAMED,  
EASY-FLESHING, MATERNALLY ORIENTED  
ANGUS CATTLE.*

*Maternal* **POWER**  
**ANGUS BULL SALE**  
FEB. 23, 2019 | 3 P.M. | FORT RICE, N.D.

*Selling* **40** Yearling  
ANGUS  
Bulls

**Sires include:**  
Bruin Torque 5 261  
Koupal Advance 28  
Sinclair Emulation XXP  
Connealy Capitalist 028

Many full, 7/8, 3/4 and 1/2 brothers sell!



Ranch: (701) 445-2020

VIDEOS OF THE BULLS ARE AVAILABLE ON OUR WEBSITE  
[www.STROMMENRANCH.COM](http://www.STROMMENRANCH.COM)

Aaron: (701) 290-7983