

Atwater High School FFA

Atwater High School Agriculture Department



2018 - 2019

Program of Activities

Overview / Budgets

Table of Contents

President’s Message	2
Officer’s Message	3
Advisor’s Message	4
2018 – 2019 Chapter Goals	5
Calendar of Activities	7
FFA and Agricultural Education	13
FFA Mission and Strategies	14
FFA Emblem	15
FFA Creed	16
FFA Colors and Motto	17
FFA Official Dress	18
FFA Code of Ethics	19
SAE	20
Cooperation	22
Community Service	23
Leadership / Committees	24
Webpage, Links, and Applications	26
Earnings and Savings	27
Conduct of Meetings	28
Scholastic Achievements and Scholarships	29
Recreation	30
Public Relations	31
Alumni Relations	32
Fairs and Official Show Uniforms	33
Merced County Fair SAE Budgets	35
Point Awards System	36
Chapter Constitution	40
Atwater FFA History- State FFA Degrees	47
Atwater FFA History- State/National Recognition	53
Atwater High School Enrollment History	57
Atwater High School Course Enrollment Data	58
Atwater High School Primary Agriculture Pathways	59
Atwater High School Agriculture Department / FFA Budgets	60
Department Staff Assignments and Responsibilities	61
Department Address, Telephone, and Website Information	64

President's Message

Dear FFA Members,

We are looking forward to another great, productive, and fun year with the Atwater High School FFA. The Atwater High School Agriculture Program has a long history of promoting students' success and character development through agricultural education, events, and activities. As we continue to exceed expectations, we can look forward to a school year full of teamwork, passion, success and, involvement. We have had the pleasure of adding many new agriculture courses, members, teams, teachers and ideas to our program this past year and will continue to enhance our program to best serve the students of Atwater High.



This year's officer team has and will continue to face the many challenges and obstacles thrown their way throughout the year, but with every challenge comes opportunity. I speak for the officer team when I say we look forward to guiding each member in every way possible, so they can have the greatest experience in FFA and in our Chapter. Our organization is comprised of 1100+ involved members, which hold the power to make a difference in our school and community while upholding the rich traditions within the FFA organization.

The Atwater High School Agriculture program is a growing, productive and nationally recognized agriculture program. This recognition is in direct correlation to student involvement, staff commitment, and our community's support.

I look forward to working each and every day with my officer team and fellow FFA members to preserve and enhance our contributions to our school and our community.

Sincerely,

Emmanuel Mejia

Emmanuel Mejia
2018-2019 Chapter President

Officer's Message



Left to Right: Emmanuel Mejia (President), Kaya Briscoe (Treasurer), Cristal Venegas (Vice President), Elisabeth Garner (Secretary), Alyssa Carrillo (Reporter), Luz Soto (Historian), and Jasmine Sandoval (Alfredo Elizarraraz).

Dear Members,

Our 2018-2019 Atwater FFA theme is, "It Starts Now"! The FFA provides us with many opportunities that expand our academic success, personal growth, leadership, skill development, career exploration and there is no better time to start than now.

The 2018-2019 Atwater FFA chapter officer team strives to serve all students within the Atwater High School agriculture program. We want each of you to start now, by taking every opportunity offered. You are all encouraged to learn, grow, and develop in agriculture education and the FFA through chapter meetings, judging teams, community service activities, fundraisers, team competitions, recreational activities, and much more! Every event we hold is bound to be enjoyable, enlightening and dynamic to all involved!

Our established goal is to ensure that all stakeholders are aware of the agriculture industry and its importance in our everyday life. There is so much to explore in the agriculture industry including; agriculture mechanics, animal anatomy, horticulture, agriculture business, biotechnology, agronomy, floriculture, vet science, and computer technology. As a chapter, we want to strive to meet our goals of getting more students involved in our activities and FFA knowledge, becoming active members of our community, and create a fun open environment. We encourage students to be a part of the many opportunities the agriculture industry and the FFA have to offer.

*Emmanuel Mejia, Cristal Venegas, Elisabeth Garner, Kaya Briscoe,
Alyssa Carrillo, Alfredo Elizarraraz, and Luz Soto*

2018-2019 Chapter Officers

Advisor's Message



Sam Meredith, Shelby West, Kaylyn Davenport, Taylor Helton, Dave Gossman, Jose Vargas, Natalie Borba, Kim Macintosh, and Dan Flatt

Dear Chapter Members,

The Advisors of the Atwater FFA would like to welcome each and every new and old member alike to the Atwater FFA and Agriculture program for the 2018-2019 school year.

The mission of the Atwater FFA and Atwater High School Agriculture Department is to lead, assist, and motivate the members of the FFA in providing high quality agricultural education that is equitable and efficient, that prepares students for higher education, employment, and citizenship, and promotes students' intellectual, ethical and cultural growth.

We are committed to make a positive difference in the lives of young people through the variety of resources and opportunities agriculture education and the FFA have to offer. We believe we have something of academic, personal, or career value for all of our students and we encourage all of you to take advantage of the opportunities that have made the Atwater High School agriculture program one of the most productive programs in the state and nation!

We look forward to working with all of you and experience all the successes and adventures that the 2018-2019 school year has ahead!

Sincerely,

*Dan Flatt, Kaylyn Davenport, Dave Gossman, Kim Macintosh, Natalie Borba,
Taylor Helton, Shelby West, Jose Vargas and Sam Meredith*

The Atwater FFA Advisors

Chapter Goals

Our 2018-2019 FFA officer team created the following chapter goals during our annual FFA Chapter Officer Retreat held in South Lake Tahoe, CA in August 2018:

1. Develop Strong and Effective Chapter Leadership

- Develop and strengthen communication skills
- Implement/expand digital FFA scrapbook (ordering opportunities for students)
- Expand/improve web, media, social media, and marketing photos
- Increase student involvement & participation
- Increase & improve agriculture leadership curriculum & resource

2. Develop and Strengthen Agriculture Resources and Curriculum

- Implement plan/vision for various agriculture/CTE funding grants
- Proposal/approval of NEW “Turfgrass and Sports Field Management” course
- Create, implement, and build Ag Soil and Chemistry course curriculum
- Expand curriculum technology resources (ex. - digital microscopes, animal science models, etc...) – teaching/learning tools
- Explore expanding “Ag Business” pathway full time
- Implement expanded technology practices w/ new /revised Ag Earth curriculum
- Increase and expand variety of large and medium ag mechanics projects
- Implement/expand CTEIG/CRAECP funded equipment/supplies into curriculum
- Promote and implement expansion of school periods/opportunities for students

3. Expand Student Involvement and Participation

- Increase student attendance and participation at chapter meetings
- Increase SAE projects (animal, plant, and ag mech)
- Expand and strengthen FFA competition opportunities / teams
- Improve organization and planning of events/activities
- Continue to expand, revise and improve development of National Chapter Award application and develop new activities / events to enhance application/process

4. Develop Strong Recruitment & Retention Program

- Strengthen and expand middle school relationships & communication
- Maintain / improve recruitment presentations & education
- Strengthen expanded courses/pathway enrollment within new “7 period” school day
- Maintain/strengthen agriculture “foundation” (9th grade) courses
- Create new program marketing resources (example - banner displays)

5. **Expand & Develop Agriculture Facilities / Resources**

Agriculture Mechanics / Shops

- Replace/upgrade old power mechanics equipment
- Replace/upgrade shop electrical for new downdraft tables

Agriculture Facility

- Explore expanded usage of N (back) area of school (farm a crop)
- Purchase of a new metal shed for expanded current/future equipment

Arnold's Farm

- "Fine-tune" sheep/swine pen/facility operation equipment/layout

Fair Projects

- Purchase new/expanded fair/show equipment for expanded student SAE's

Horticulture / Floriculture

- CRAECP Grant equipment (expand growing benches, etc...)
- Implement/utilize portable fertilizer injector
- Expand variety of plant stock for sales and long term growing/stock
- Expand county fair horticulture entries
- Set-up and utilization of new floral trailer
- Expand floral business credit card payment process

Pole Barn

- Reorganize and clean pole barn area for improved operation efficiency

Poultry Facility

- Expand/strengthen turkey SAE operation/facility

Rabbit Facility

- Expand and revise current pole barn rabbit facility
- Develop and improve rabbit cleaning/maintenance operation

Science Room/Lab Equipment

- Utilize new microscopes and implement into biology curriculum

Calendar of Activities

August 2018

Sun	Mon	Tue	Wed	Thu	Fri	Sat
			01	02	03	04
05	06	07	08	09	10	11
12	13	14	15	16	17	18
			1 st Day of School			
19	20	21	22	23	24	25
			FFA Greenhand Conference	FFA Jacket Orders Begin	FFA Football BBQ's (West) FFA BBQ #1 Ticket Sales	FFA Sectional Leadership Conference
26	27	28	29	30	31	
	FFA Placement Ad Sales Begin		AHS Back to School Night FFA Ice Cream Social		FFA Football BBQ's (Davenport)	

September 2018

Sun	Mon	Tue	Wed	Thu	Fri	Sat
						1
2	3	4	5	6	7	8
	School Holiday- No School				Take Out BBQ #1 Ticket Sales END	
9	10	11	12	13	14	15
	FFA Placement Ad Sales END	FFA COLC MMS CATA Meeting		Take Out BBQ #1	ABC Morning Rally	
16	17	18	19	20	21	22
		FFA Castle Air 'Museum' Meeting		Madera FFA Cotton Contest	FFA Football Game BBQ (Vargas)	
23 / 30	24	25	26	27	28	29
	State FFA Exec, Advisory, and Adult Brd Mtg	FFA National Delegate Training				

Calendar of Activities

October 2018

Sun	Mon	Tue	Wed	Thu	Fri	Sat
	01	02	03	04	05	06
	Atwater High School Homecoming Week	Atwater High School Homecoming Week	Atwater High School Homecoming Week	Atwater High School Homecoming Week	Atwater High School Homecoming Week	Fall Fest VII
07	08	09	10	11	12	13
			El Cap FFA Opening/closing Ceremonies Practice/Conte		FFA Fall Plant Sale 8:00am-4:00pm	FFA Corcoran Cotton Contest FFA Fall Plant Sale
14	15	16	17	18	19	20
	FFA Sate Conference Applications Released	FFA ALA/MFE Applications Released	Opening/Closing Ceremonies -Gustine	Atwater FFA Beautification Day	End Of 1 st Quarter FFA Football Game BBQ	FFA MJC Cotton Contest
21	22	23	24	25	26	27
	FFA National Convention	FFA 'Corn Maze' Meeting FFA National Convention	FFA National Convention	FFA National Convention	FFA ALA/MFE Applications DUE FFA National	FFA National Convention
28	29	30	31			
	Greenhand Officer Applications Available					

November 2018

Sun	Mon	Tue	Wed	Thu	Fri	Sat
				01	02	03
04	05	06	07	08	09	10
			New Professional Institute	New Professional Institute Sectional Cata	Greenhand Officer Applications DUE	
11	12	13	14	15	16	17
	School Holiday- No school	Greenhand Officer- Interviews Local FFA	Greenhand / Chapter Degree Ceremony Mtg @ Atwater High		Central Region CATA Road Show	Central Region CATA Mtg
18	19	20	21	22	23	24
	Thanksgiving Recess-No school	Thanksgiving Recess-No School	Thanksgiving Recess- No School	Thanksgiving Recess-No School	Thanksgiving Recess-No School	
25	26	27	28	29	30	
	NAAE Convention Take Out BBQ #2 Ticket Sales	NAAE Convention	NAAE Convention	MM FFA Project Competition day	NAAE Convention	

Calendar of Activities

December 2018

Sun	Mon	Tue	Wed	Thu	Fri	Sat
						01
						FFA Mariposa Creed/Impromptu Contest NAAE
02	03	04	05	06	07	08
		FFA Dairy Heifer Project Parent/student MGT 6:00pm-		Advanced Leadership Institute	Advanced Leadership Institute AHS' Miricals	
09	10	11	12	13	14	15
				FFA BBQ Takeout #2		FFA Stockton Heat Hockey Game
16	17	18	19	20	21	22
	FFA "Morning Wave" meeting		End of 1 st semester	Muhsd Non Instructional Day No school sudents	Winter Recess - > No school	Winter Recess - > No school
23/30	24/31	25	26	27	28	29
Winter Recess - > No school	Winter Recess - > No school	Winter Recess - > No school	Winter Recess - > No school	Winter Recess - > No school	Winter Recess - > No school	Winter Recess - > No school

January 2019

Sun	Mon	Tue	Wed	Thu	Fri	Sat
		01	02	03	04	05
		Winter Recess - > No school	Winter Recess - > No school	Winter Recess - > No school	Winter Recess - > No school	
06	07	08	09	10	11	12
	2 ND Semester starts			Student Teacher conclave	Student Teacher conclave	
13	14	15	16	17	18	19
		Merced/Mariposa FFA Manuscripts Due	FFA "Movie Night" Mtg			
20	21	22	23	24	25	26
	School Holiday -> No School	FFA Parent/Student Merced Fair Exhibitor Mtg				FFA "Super Saturday" Speaking Contest
27	28	29	30	31		
	Merced Fair Application/ Deposit Week	Merced Fair Application/ Deposit Week	Merced Fair Application/ Deposit Week	Merced Fair Application/ Deposit Week		

Calendar of Activities

February 2019

Sun	Mon	Tue	Wed	Thu	Fri	Sat
					01	02
					Merced Fair Application/Deposit Week	Arbuckle FFA Field Day MJC Parli Pro Invitational
03	04	05	06	07	08	09
	Mentoring/Supervising Teacher Conclave 8am-	Mentoring/Supervising Teacher Conclave	Merced/Mariposa Project Competition Banquet		FFA MFE/ALA Conference FFA Regional Officer	Chico State Parli Pro Invitational FFA MFE/ALA
10	11	12	13	14	15	16
	Regional Proficiency Scoring			FFA World Ag Expo Trip at Tulare Fair Show	FFA Take out BBQ #3 Ticket Sales Begin	Atwater Parli Pro Invitational
17	18	19	20	21	22	23
	Winter Recess - > No School	National FFA Week Winter Recess- > No School	National FFA Week Winter Recess- > No School	National FFA Week Winter Recess- > No School	National FFA Week Winter Recess- > No School	Atwater Ag Booster Dinner CATA Regional Mtg
24	25	26	27	28		
	Regional FFA Speaking Manuscripts DUE Regional	Regional State Proficiency Scoing – Galt	FFA Sectional Basketball Tournament Regional State			

March 2019

Sun	Mon	Tue	Wed	Thu	Fri	Sat
					01	02
					UC Davis Parli Pro	UC Davis FFA Field Day UC Davis Parli Pro
03	04	05	06	07	08	09
	Merced/Mariposa Sectional Parli Pro Finals	FFA Sacramento Leadership Experience FFA State Officer	FFA Sacramento Leadership Experience	FFA Sacramento Leadership Experience	FFA Sacramento Leadership Experience FFA Take Out	Chico State FFA Field Day
10	11	12	13	14	15	16
	FFA" Bowling Tournament" Mtg			FFA Take out #3 8am – 9am	End of 3 rd Quarter Regional Sneaking	Merced Collage FFA Field Day
17	18	19	20	21	22	23
			FFA Sate Degree Ceremony		Regional FFA Parli Pro Finals	MJC FFA Field Day
24/31	25	26	27	28	29	30

Calendar of Activities

April 2019

Sun	Mon	Tue	Wed	Thu	Fri	Sat
	01	02	03	04	05	06
						CRC FFA Field Day Reedley Collage FFA
07	08	09	10	11	12	13
		M/M CATA Mtg M/M Sectional Mtg				Fresno State FFA Field Day
14	15	16	17	18	19	20
21	22	23	24	25	26	27
	Spring Recess- No School	Spring Recess- No School	Spring Recess- No School Sate FFA	FFA State Convention- Disneyland	Spring Recess- No School State FFA Parli	FFA State Convention
28	29	30				
FFA Sate Convention						

May 2019

Sun	Mon	Tue	Wed	Thu	Fri	Sat
			01	02	03	04
				Cal Poly State Finals Trip	Cal Poly State Finals Trip	Cal Poly FFA State Finals
05	06	07	08	09	10	11
					BBQ Ticket Sales END FFA Plant Sale	FFA Spring Plant Sale
12	13	14	15	16	17	18
				FFA Take- Out BBQ #4		
19	20	21	22	23	24	25
		FFA Chapter Awards MTG		FFA Judging Team Awards		
26	27	28	29	30	31	
	School Holiday- No School					

Calendar of Activities

June 2019

Sun	Mon	Tue	Wed	Thu	Fri	Sat
						01
02 Merced County Fair	03 Merced County Fair	04 Merced County Fair	05 Merced County Fair	06 Merced County Fair	07 Merced County Fair	08 Merced County Fair
09 Merced County Fair	10	11 Merced Fair Student Check Pick Up/AET Record Book 8:00am	12	13 FFA "Point Awards" Trip	14	15
16	17	18	19	20	21	22
23/30 CATA Summer Conference	24 CATA summer Conference	25 CATA Summer Conference	26 CATA Summer Conference	27 CATA Summer Conference	28	29

July 2019

Sun	Mon	Tue	Wed	Thu	Fri	Sat
	01	02	03	04	05	06
07	08	09	10	11	12	13
14	15	16	17	18	19	20
21	22	23	24	25	26	27
28	29	30	31			

FFA and Agricultural Education

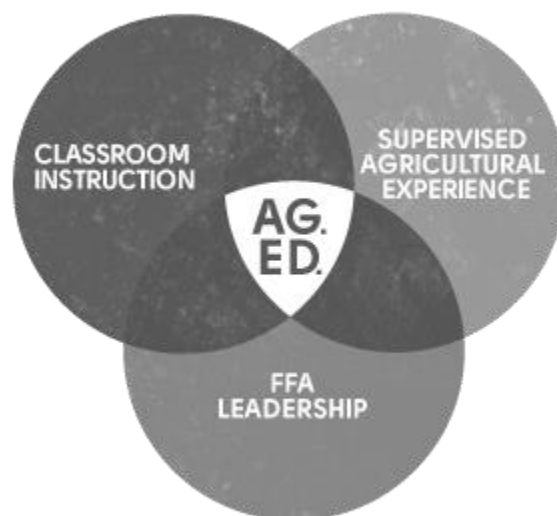
When you put on an FFA jacket, you become part of a total agriculture education program that will connect you to exciting careers in the science, business and technology of agriculture. FFA is only one of three essential components of this system, all of which work together to provide you with the personal, academic and career experiences essential for your success. Get to know the “three circles” that make this possible.

Classroom/Laboratory Instruction- Agriculture is rooted in science, math, business and technology. The time you spend in the classroom and school lab with your teacher will help you explore and master the information necessary to move forward with your career development. Get ready for exciting hands-on opportunities that make textbooks come alive!

Supervised Agricultural Experience (SAE)- Nothing takes your skills to highest level faster than putting them into practice. Through an SAE, you can create your own landscaping business, conduct a scientific research project that could change the world, grow crops or raise livestock, secure a meaningful job that provides insider experience related to your career choice, or learn how to make a difference in your community through civic engagement. Best of all, you can earn while you learn.

FFA- As an FFA member, you'll work on developing your potential for premier leadership, personal growth and career success. By participating in competitions, degree programs, state and national conventions, community service projects, summer camps and chapter committees, you'll grow in ways that take advantage of your talents and help you become the leader you were meant to be. The key to success in FFA is to get involved!

Make sure you're getting a complete Agricultural Education experience, and remember that it all works together. Talk with your agricultural teacher today and make plans to perform in all three arenas. Don't just settle for a high school diploma when you can get set for life.



FFA Mission and Strategies

FFA makes a positive difference in the lives of students by developing their potential for **premier leadership, personal growth and career success through agriculture education.**

To accomplish this mission, FFA:

- Develops competent and assertive agriculture leadership
- Increases awareness of the global and technological importance of agriculture and its contribution to our well-being.
- Strengthens the confidence of agriculture students in themselves and their work.
- Promotes the intelligent choice and establishment of an agricultural career
- Encourages achievement in supervised agricultural experience programs
- Encourages wise management of economic, environmental and human resources of the community
- Develops interpersonal skills in teamwork, communications, human relations and social interaction.
- Builds character and promotes citizenship, volunteerism and patriotism.
- Promotes cooperation and cooperative attitudes among all people.
- Promotes healthy lifestyles.
- Encourages excellence in scholarship.



FFA Emblem

Many organizations have logos they use as part of their identity. As with most logos, the FFA emblem is symbolic. It contains five separate elements. Each element represents items or ideals that are important to the organization and its members.



The cross-section of an ear of corn serves as the emblem's foundation, just as corn has historically served as a foundation crop in American agriculture. Corn is also a symbol of unity because it is native to America and it is grown in every state.

The rising sun appears in the center of the emblem and symbolizes progress in agriculture and the confidence FFA members have in the future.

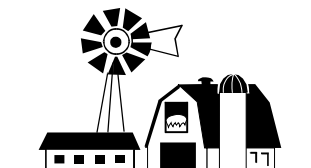
The plow is a symbol of labor and tillage of the soil.

The owl represents knowledge and wisdom.

The eagle is perched on top of the emblem and served as a reminder of our freedom and ability to explore new horizons for the future of agriculture.

Finally, the words, **"Agriculture Education"** surrounding the letters "FFA" indicate that the FFA is an important part of the agricultural education program.

FFA Creed



The FFA Creed is a basic statement of beliefs and a common bond between members. The creed was written by E.M. Tiffany and adopted at the 3rd National FFA Convention. It was revised at the 38th and 63rd conventions to reflect changes in FFA members and the agricultural industry.

The FFA Creed

I believe in the future of agriculture, with a faith born not of words but of deeds - achievements won by the present and past generations of agriculturists; in the promise of better days through better ways, even as the better things we now enjoy have come to us from the struggles of former years.

I believe that to live and work on a good farm, or to be engaged in other agricultural pursuits, is pleasant as well as challenging; for I know the joys and discomforts of agricultural life and hold an inborn fondness for those associations which, even in hours of discouragement, I cannot deny.

I believe in leadership from ourselves and respect from others. I believe in my own ability to work efficiently and think clearly, with such knowledge and skill as I can secure, and in the ability of progressive agriculturists to serve our own and the public interest in producing and marketing the product of our toil.

I believe in less dependence on begging and more power in bargaining; in the life abundant and enough honest wealth to help make it so--for others as well as myself; in less need for charity and more of it when needed; in being happy myself and playing square with those whose happiness depends upon me.

I believe that American agriculture can and will hold true to the best traditions of our national life and that I can exert an influence in my home and community which will stand solid for my part in that inspiring task.



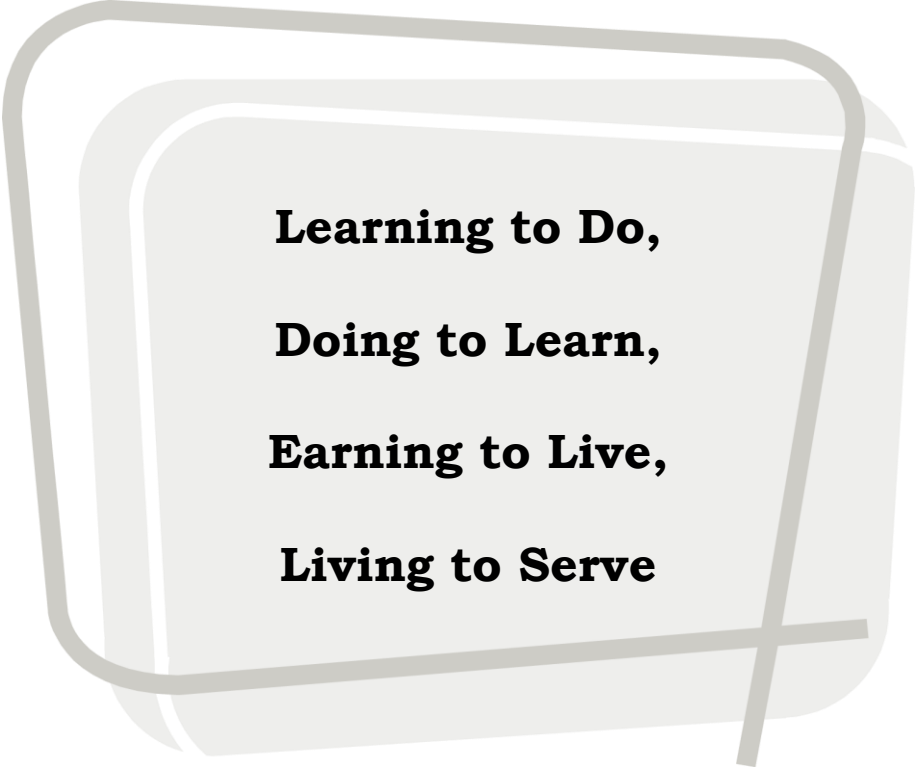
FFA Colors and Motto

Colors

The National FFA Organization chose national blue and corn gold as its official colors in 1929. As the blue field of our nation's flag and the golden fields of ripened corn unify our country, the FFA colors give unity to the organization.

Motto

Many important things come in small containers. Although a diamond ring takes up a little space, it is extremely valuable. So it is with the FFA motto. The motto has just 12 words, but those words are powerful.



**Learning to Do,
Doing to Learn,
Earning to Live,
Living to Serve**

FFA Official Dress

One of the most unifying elements for any group is its uniform. In FFA, the uniform members wear to local, state and national functions is called official dress. It provides identity and gives the organization a distinctive and recognizable image.

Proper Use of the FFA Jacket

- The jacket is to be worn only by members.
- The jacket should be kept clean and neat at all times.
- The back of the jacket includes only: a large official FFA emblem, the name of the state association and the name of the local chapter, district or area. The front of the jacket includes only: a small official FFA emblem, the name of the individual, one office or honor and the year of that office or honor.
- The jacket should be worn on official occasions with the zipper fastened to the top. The collar should be turned down and the cuffs buttoned.
- The jacket should be worn by members and officers on all official FFA occasions, as well as other occasions where the chapter or state association is represented. It may be worn to school and other appropriate places.
- The jacket should only be worn to places that are appropriate for members to visit.
- School letters and insignia should not be attached to or worn on the jacket.
- When the jacket becomes too faded and worn to wear in public, it should be discarded or the emblems and lettering should be removed.
- The emblems and lettering should be removed if the jacket is given or sold to a non-member.
- A member should act professionally when wearing the official FFA jacket.
- Members should refrain from use of tobacco and alcohol when underage and at all times when representing the FFA. In addition, members should exhibit their leadership qualities when they encounter substances including tobacco and alcohol and serve to discourage others from inappropriate behavior.
- All chapter degree, officer pins, and other award medals should be worn beneath the name on the right side of the jacket, with the exception that a single State FFA charm and American FFA key should be worn above the name or attached to a standard key chain. No more than three medals should be worn on the jacket; these should represent the highest degree earned, the highest office held and the highest award earned by the member.

Official FFA Dress

- Official dress for female members is a black skirt, white blouse with official FFA scarf, black shoes, and official jacket zipped to the top. Black slacks may be worn for traveling and outdoor activities.
- The official dress for male members is black slacks, white shirt, official FFA tie, black shoes, black socks and the official jacket zipped to the top.

FFA Code of Ethics

People are always observing you. Your actions when you wear the FFA jacket or represent the organization become part of the organization's image. To keep the image of the FFA and members sharp, delegates at the 1952 National FFA Convention adopted a Code of Ethics for FFA members to follow. The FFA Code of Ethics still protects the FFA image. It also guides members to make positive, healthy choices – and not only during FFA activities. The code of ethics guidelines are good to follow during all occasions and functions.

The FFA Code of Ethics

FFA Members conduct themselves at all times to be a credit to their organization, chapter, school, community and family. I pledge to:

- Develop my potential for premier leadership, personal growth and career success
- Make a positive difference in the lives of others.
- Dress neatly and appropriately for the occasion.
- Respect the rights of others and their property.
- Be courteous, honest and fair with others.
- Communicate in an appropriate, purposeful and positive manner.
- Demonstrate good sportsmanship by being modest and winning and generous in defeat.
- Make myself aware of FFA programs and activities and be an active participant.
- Conduct and value a supervised agricultural experience program.
- Strive to establish and enhance my skills through agricultural education in order to enter a successful career.
- Appreciate and promote diversity in our organization.

What if you could get classroom credit and FFA awards for doing what you like: experimenting with careers, earning money, building a resume and having fun? You can – with a Supervised Agricultural Experience (SAE) program. An SAE is a program you design to gain hands-on experience and develop skills in agricultural career areas that interest you.

You choose an SAE program that lets you discover, explore, experience and excel in careers. In the meantime, you gain skills and experience that pay off in areas of life. Your SAE program can lead you toward personal growth, premier leadership, and career success.

An SAE program is not just another class assignment or graduation requirement. You are truly in charge of your SAE! Although your agriculture teacher will help you learn related information and keep good records, the success or failure of your SAE is up to you. It's an exciting opportunity to prove your abilities to future employers – and to yourself.

Atwater FFA SAE Program

- ❖ The Chapter will encourage all members to maintain a Supervised Agriculture Experience (SAE) program.
- ❖ The Chapter will encourage members to compete at shows with their SAE.
 - All Chapter members are expected to work as a team at all fairs and shows
 - The Chapter will conduct an Exhibitors / Parent evening to inform parents and members of a member's responsibilities.
 - The Chapter will require parents of all first time exhibitors to attend a meeting conducted by the Chapter Advisors. This meeting will serve as an informal session to allow parents / exhibitors to become aware of the expectations and responsibilities placed on the Chapter exhibitor.
 - All projects exhibited at fairs and shows by members of the Chapter must be entered in the FFA division and only with Advisor approval and supervision.
 - Members exhibiting at fairs must maintain academic requirements set forth by Atwater High School and the Atwater Agriculture Program and FFA. In order to participate in any activity beyond the chapter level, an individual must maintain at least a 2.0 GPA, cannot have more than one F, and cannot have received less than a C grade in any Agriculture class the last eligibility period to the event.

S.A.E.

- Additional eligibility rule – Students will be given one chance for scholastic ineligibility for showing at fairs. If a student becomes ineligible to show at a fair that they had planned to show, the student will receive a warning. If the same student should become ineligible again to show at a fair that they had planned to show at, the student will no longer be eligible to show with Atwater FFA.
 - Members are encouraged to apply for local, regional and state proficiency awards.
 - Members are encouraged to apply for advanced degrees (i.e. State FFA Degree)
 - Members are encouraged to compete in the Local and Sectional Project Competition.
 - Members are required to follow project Advisor's recommendations concerning their SAE.
 - Members are encouraged to strive to improve and develop their SAE each year.
 - ◆ Encourage members to develop skills within their SAE through participation and appropriate judging teams.
 - ◆ Members are encouraged to attend demonstrations, breeding shows, and equipment shows which will enable them to increase their efficiency and knowledge of their SAE.
- ❖ Members are encouraged to provide support and help their fellow Chapter members.



Cooperation

The Atwater FFA chapter will develop a sense of cooperation among the entire membership.

- The Atwater Chapter will cooperate with other FFA chapters.
 - ◆ Participation in Sectional, Regional, and State activities.
 - ◆ Hosting Sectional activities as needed.
 - ◆ Serving the awards banquet for Livingston FFA
- The Chapter will cooperate with Atwater High School.
 - ◆ BBQ during home AHS football games and AHS BBQ functions.
 - ◆ Participation in school functions and events
 - ◆ Chapter representation during school sponsored activities and functions
 - ◆ Cooperation and support with other AHS youth organizations
- The Chapter will participate in community cooperation.
 - ◆ Participating and working with Merced County Office of Education's ROP program and awards ceremony.
 - ◆ Participating and cooperating with local elementary schools in various agriculture projects (example: school gardens)
 - ◆ Providing local middle schools with an informative recruitment presentation.
 - ◆ Participation in a local city beautification project(s).
 - ◆ Participation in Merced County and the American Cancer Society's Relay for Life
- Members exhibiting at fairs and shows will cooperate together and compete as a team.

Community Service

The primary objective towards community service is for FFA members to establish an attitude of service towards the community in which they live.

The Atwater FFA will develop a sense of community service among the entire membership.

- Our chapter will conduct food and toy drives during the Thanksgiving and Christmas holidays to help those in need.
- We will assist with community projects and activities when called upon by the Chamber of Commerce.
- We will participate in the Atwater Beautification Day.
- We will take advantage of opportunities to form partnerships with community organizations in working with agricultural education and agricultural projects.
- Our chapter continues to strive towards participating in various community outreach programs



Leadership

Leadership is the ability to guide or influence others to work towards a meaningful goal while helping each to develop themselves as group members. Leadership is the ability in a well-adjusted person to handle people, to inspire or influence the actions of others, to make decisions or to move a group to action. Leadership is a contribution to the establishment and attainment of group processes. Therefore, leadership is a quality of group action.

Public Speaking

- Prepared Public Speaking
- Extemporaneous Public Speaking
- Parliamentary Procedure
- Job Interview
- Opening and Closing Ceremonies Speaking Contest

Committees

- Every member on at least one committee or involved in some kind of activity. The objective of each committee and committee chair(s) is to plan, prepare, organize, and implement each activity/event.
 - Annual FFA Awards Banquet – Overall
 - Annual FFA Awards Banquet – Awards
 - Annual FFA Awards Banquet – Decorations
 - Annual FFA Awards Banquet – Food
 - Annual FFA Awards Banquet – Music
 - Annual FFA Awards Banquet – Script / Program
 - Annual FFA Awards Banquet – Tickets
 - Annual FFA Awards Banquet – Video / Flyers
 - Atwater Beautification
 - Canned Food Drive
 - Drive-thru BBQ's (4)
 - FFA "Basketball" or "Hockey" Trip
 - FFA Homecoming Float
 - FFA Jackets)Ordering / Organization)
 - FFA "Bowling" Meeting
 - FFA "Burrito Bingo" Meeting
 - FFA "Morning Wave" Meeting
 - FFA "Movie Night" Meeting
 - FFA "Point Awards" – Tabulations/Recording
 - FFA "Pool Party" Meeting
 - FFA State Officer Visits
 - Floral Christmas Arrangements
 - Greenhand / Chapter Degree Ceremony
 - Greenhand Workshops

- Local Creed, Prepared, Job Interview, etc... Contest(s)
 - National FFA Week (Overall)
 - National FFA Week – Ag Olympics
 - National FFA Week – Basketball Tournament
 - National FFA Week – Dress-Up Days
 - National FFA Week – “Kiss-the-Calf”
 - Program Medical Forms / R2 Forms
 - Placemat Ad Sales
 - Video Communications / Editing
- Select Chapter members as Chairpersons for Committees

Degrees and Awards

- Encourages every member to apply for Greenhand and Chapter Farmer FFA Degree Encourage every qualified member to apply for the State and American FFA degree
- Encourage members to apply for State Proficiency Awards

Officer / Leadership Training

- Annual Chapter Retreat for new officers
- Leadership Training Conference for all officers
- Sectional & Regional Officer Training
- Made for Excellence Leadership Training / Advanced Leadership Academy / Sacramento Leadership / Washington DC Leadership Conference

Meetings

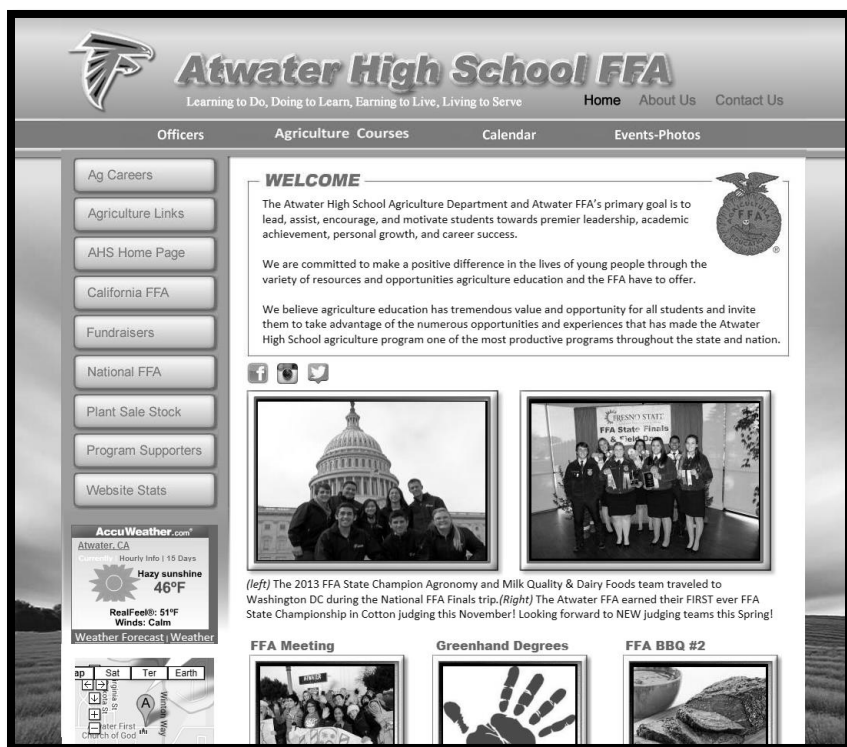
- Conduct meetings in an orderly fashion by utilizing Parliamentary Procedures
- Have regularly scheduled Chapter Officer and Chapter Meetings
- Encourage every member to attend and participate at all meetings
- Send delegates to all Sectional, Regional, State, and National Meetings

Offices

- Encourage local members to run for local, sectional, regional, and state offices
- Invite Sectional, Regional, and State Officers to speak to your chapter



Webpage, Links, and Applications



Webpage

www.AtwaterFFA.org is the official Atwater FFA and Atwater High School Agriculture Department's webpage. All information pertaining to national, state, and chapter FFA information, Atwater High School Agriculture Department information, agriculture staff, agriculture student, agriculture industry, and yearly calendar of events/activities can be obtained and/or accessed through the Atwater FFA webpage.

Applications

All yearly applications pertaining to Atwater FFA (example – chapter officer, scholarships, etc...) and/or links to state/national FFA applications can be accessed through the Atwater FFA webpage.

Agriculture FFA / Agriculture Links

Information and communication links to all FFA, agriculture, and industry can be accessed through the Atwater FFA webpage.

Social Media

The Atwater FFA and agriculture program has various social media sites that include Facebook, Twitter, etc...

Earnings and Savings

As a self-supporting, non-profit organization, the earnings and savings aspect of our chapter is very important towards the success and productivity of our **2018-2019** school year.

The chapter earns money in various ways in order to finance FFA events and activities throughout the year. Some of these activities include:

- Atwater Ag Booster Dinner
- Atwater FFA “Fall Fest” Dinner / Auction
- Atwater FFA Plant Sales (2)
- AHS Ag Mechanics Wood/Metal Project Sales
- BBQ Take-Out Dinners (4)
- Floral Project(s), Weddings/Event(s) Sales
- Milk Vending Machine
- Placemat Ad Fundraiser
- Save Mart S.H.A.R.E.S. Program



Conduct of Meetings

Hold Regular, Well-Planned Meetings that Capture the Chapter's Interest and Participation

- Have weekly Chapter Officer Meetings
- Have regular month Chapter Meetings
- Call special meetings when necessary
- Conduct regular Executive Meetings in order to maintain solid Chapter communications
- Prepare a well-planned program before meetings
- Provide refreshments for Chapter Meetings
- Have frequent and informative committee reports
- Invite parents and the community leaders to the Chapter Meeting
- The duty of the Sentinel is to set the proper paraphernalia out for the Chapter Meeting and to help the President in maintaining order.
- The goal of the Chapter is to have a least 50% attendance at each Chapter Meeting
- Have an activity after every Chapter Meeting

Special Meetings Should be Held as Necessary

- A special potluck dinner meeting will be held for the Greenhand/Chapter FFA Degree Installation Banquet
- A very special Awards Banquet will be held in May to wrap up the year.

The Official Ceremonies will be used at all Meetings

- All officers are required to learn their part.
- The officers will wear the official uniform at all meetings
- The necessary paraphernalia will be used at all meetings.

Scholastic Achievement and Scholarships

The chapter will encourage students to strive for academic excellence.

1. Improve scholarship of FFA members in all academic subjects

- A. Encourage members to strive for C.S.F. standards
- B. Strive to have all FFA members on the honor roll
- C. Award points on the Chapter Point Awards system for good grades
- D. Require that all Chapter Officers maintain at least a B in all agriculture classes.
- E. Members participating in competitive events shall not fall below a C or 2.0 average on a 4.0 scale or have less than a C in any agriculture class. Eligibility for all competitive events will be suspended if any of the above shall occur.

2. Will strive to improve home technology, reading and library use.

- A. Encourage each member to subscribe and read at least one agriculture publication.
- B. Encourage each member to use school and county libraries for agriculture research projects.

3. Will encourage Seniors to apply for scholarships available to them in order to continue their education.

- A. Twelfth grade members are encouraged to apply for scholarships including the Bloss, Fancher, Winton Grange, Farm Bureau, and Atwater Ag Booster Scholarship which are available to agriculture students.
- B. Twelfth grade members are encouraged to apply for any scholarships which are available to them for the school they are planning to attend.
- C. Twelfth grade chapter members are encouraged to talk with their counselors about other scholarships which may be available to them as a result of their parent's affiliation with a lodge or places of employment.

4. Scholastic Awards

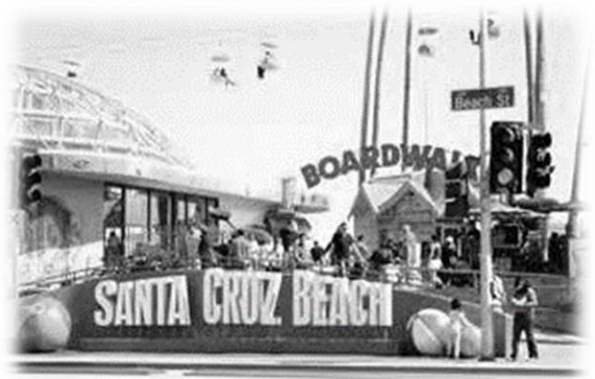
- A. Award trophies to the Agriculture students in each grade level with the highest GPA.

Recreation

The purpose of recreation is to create an opportunity for FFA members to participate in recreational activities and develop one's social and team building skills. It's also an opportunity to have some fun!

Here's a list of recreational activities scheduled for the **2018 – 2019** school year:

August	South Lake Tahoe, CA Leadership Training / Recreation
September	"Aircraft Museum" – Castle Air Base
October	"Corn Maze" – Lathrop, CA
December	Stockton Heat Hockey Trip
January	Movie Night
March	Bowling Night
April	"Burrito Bingo"
June	TBD (Point Award Trip)



Public Relations

The purpose of public relations is to inform our chapter members and the general public about the activities of our local chapter as well as the overall benefits of the FFA.

Media

- Establish, strengthen, and maintain relationships with media contacts
- Submit articles and photos to various local, regional and state media publications
- Extend media coverage beyond newspapers and publications (i.e. radio, tv, etc...)
- Continue to develop and promote the www.AtwaterFFA.org website as an information resource
- Extend and participate in new communication / social media technology resources such as Facebook

FFA Week

- Use various forms of media to keep the public informed during FFA Week
- Conduct school and community activities throughout FFA Week

Various FFA Events and Activities

- Select worthy persons as Honorary Chapter farmers
- Recognize worthy individuals to receive Certificates of Appreciation
- Provide community advertisements through Placemat Ad fundraiser
- Host various award recognition ceremonies for parents and families of FFA members
- Sponsor a parent / member banquet
- Maintain a chapter scrapbook
- Chamber of Commerce and other community service clubs
- Serve at the Livingston FFA Awards Banquet

Atwater High School

- Regular communication sessions with AHS administration and counselors
- Assist and support various school activities

Alumni Relations

The Chapter will encourage graduating seniors to keep membership affiliation for the following year.

- As graduate members, the chapter will encourage these members to:
 - Exhibit at fairs until eligibility membership expires
 - Apply for advanced degrees such as the American FFA Degree
 - Apply for proficiency awards in their SAE area
 - Continue an active role in participation in local activities
 - Attend all chapter meetings
- The Chapter will utilize the expertise of alumni members when needed by the Chapter.
 - To help coach judging teams
 - To serve as judges of local FFA contests
 - To assist in money raising activities such as ad sales, BBQ's, etc.
 - Provide facilities for SAE projects



Fairs and Official Show Uniforms

Official Show Uniform

The official Show Uniform for FFA members consists of:

White shirt or blouse, white pants, FFA tie, and FFA jacket. Shoes should be appropriate for what you are showing.

Fairs

The Atwater FFA Chapter is involved in many fairs throughout the year. The livestock and agricultural mechanics projects are exhibited throughout the state, where the chapter wins many awards and honors. The animals that are exhibited include market and breeding sheep, market and breeding beef, market and breeding swine, dairy cattle, rabbits, market, breeding, and dairy goats.

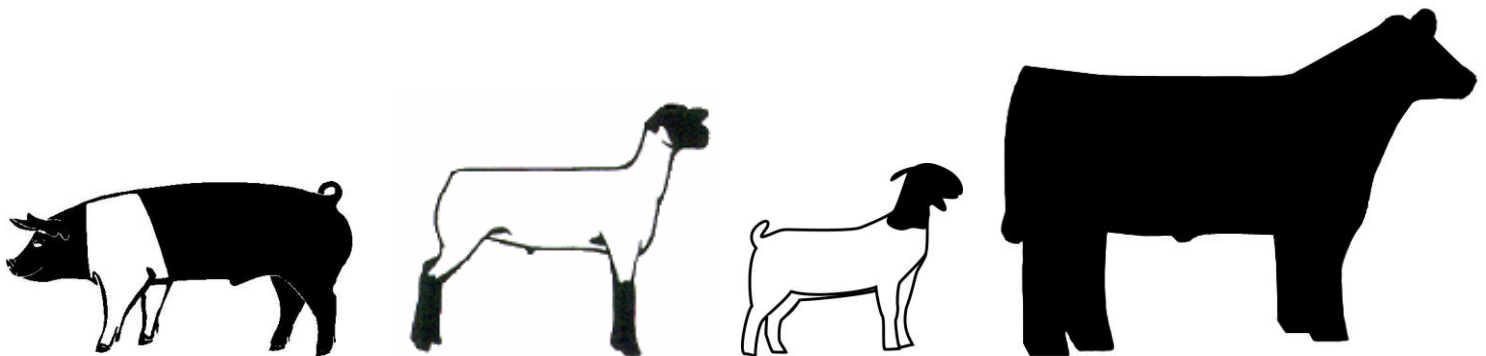
The Fairs that are attended are:

- (Summer) Merced County Fair
- (Summer) California State Fair



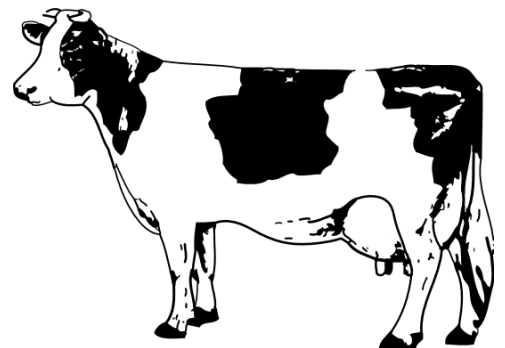
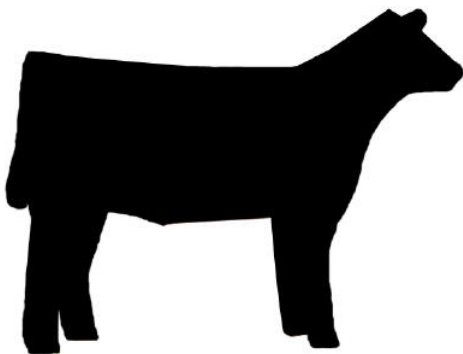
Merced County Fair SAE Budgets

	Market Hog	Market Lamb	Market Goat	Market Steer
<u>Expenses</u>				
Purchase of animal	300	325	200	800
Livestock Insurance	15	15	10	50
Veterinary Supplies	15	10	5	20
Fair Bedding	15	15	15	20
Feed	250	125	150	640
Show Supplies	50	20	20	30
<u>Income</u>				
Sale of hog (230lbs @ \$3/lb)	690			
Sale of lamb (130 lbs @ \$3/lb)		520		
Sale of goat (100 lbs @ \$4.00/lb)			400	
Sale of steer (1200 lbs @ \$1.30 /lb)				1560
Total Estimated Receipts	690	520	400	1560
Total Estimated Expenses	645	510	400	1560
Estimated Net Profit	45	10	0	0



Merced County Fair SAE Budgets

	Bred Heifer	Dairy Heifer	Fryer Rabbit	Rabbit Meat Pen
<u>Expenses</u>				
Purchase of animal(s)	800	1200	20	60
Livestock Insurance	60	60		
Veterinary Supplies	60	75		
Fair Bedding	20	40		
Feed	650	500	10	10
Show Supplies	30	75	25	25
Breeding Fees	125			
<u>Income</u>				
Sale of beef bred heifer	1800			
Sale of dairy replacement heifer		2000		
Sale of rabbit(s)			70	130
Sale of steer (1200 lbs @ \$1.30 /lb)				
Total Estimated Receipts	1800	2000	70	130
Total Estimated Expenses	1620	1950	55	95
Estimated Net Profit	180	50	15	35



Point Awards System

The Point Award System was developed in order to recognize and award those members who are most active in various FFA activities throughout the year. The top individuals will receive an award and recognition at our awards banquet in May. The members were invited to participate in a Point Award trip sponsored by the Atwater FFA. In 2018, the Point Award members went to Alcatraz in San Francisco.



2017 – 2018 Point Award Winners

Alyssa Carrillo
Anessa Cardenas
Anna Lozano
Audrey Esau
Callie Norton
Colby Flatt
Cristal Venegas
Daisy Flores-Mota
Dillon Guillen

Emily Junez
Emmanuel Mejia
Gabby Lucas
Grace Reyes
Hayley Vargas
Isabell Murillo
Jasmine Sandoval
Joel Rojas
Kaya Briscoe

Luz Soto
Maria de Rosario Ruelas
Michael Bray
Natalie Frontella
Ricardo Ortega
Sidney Miller
Simarjot Gandhoke
Stephania Valdovinos
Teresa Cavallero

The Point Award System is an evaluation resource used by the Advisors towards selecting each year's Star Chapter Greenhand and Star Chapter Farmer award recipient.

Point Awards System

Atwater FFA Point Awards List

I. FFA Leadership / Community Service / Work Day Activities

A	Ag Dept. Work Day	20
B	Chairman		
	1. Over-all Chairman (Upon Completion Of Report)	20
C	Chapter FFA Degree (Year Received)	15
D	Community Service Work	5/Hour
E	Greenhand Degree (Year Received)	30
F	Homecoming Float	15 / day
G	Meetings		
	1. Attendance At Each Chapter Meeting	25
	2. 100% Attendance At Chapter Meetings	50
	3. Representing The Chapter At Sectional Meetings	15
	4. Representing The Chapter At Regional Meetings	20
	5. Representing The Chapter At State Meetings	25 / day
	6. Representing The Chapter At National Meetings	50 / day
H	Officers	30
	1. Chapter Officer	100
	2. Sectional Officer	65
	3. Regional Officer	75
	4. Student Body Officer	35
	5. Class Or Club Officer	25
I	Own Official FFA Jacket	25
J	Star Chapter Farmer	60
K	Star Greenhand	50
L	Star Regional Farmer	100
M	Star Sectional Farmer	50
N	Star State Farmer	75
O	State FFA Degree (Application Submitted)	100
P	State FFA Degree (Year Awarded)	
Q	Wear FFA Jacket Or Apparel To School On Designated Day	10

II. Fundraisers

A	AHS Football Game BBQ Crew	20 / game
---	----------------------------	-------	-----------

B	FFA Plant Sale	_____	25
C	Placement Ad Sales	_____	20 / Ad
D	Take-Out BBQ Tickets	_____	10 / ticket

II Supervised Occupational Experience Program (SAE)

A	Agriculture Mechanics Project(s)	_____	25
B	Beef / Dairy Cattle Fair Project	_____	125
C	Landscape Project at Merced / Madera County Fair	_____	50
D	Large Ag Mech Project(s) – Instructor's Approval	_____	75
E	Plant / Horticulture Project(s)	_____	25
F	Swine / Goat / Sheep Fair Project	_____	75
G	Project Competition		
	1. Local Competitions	_____	50
	2. Sectional Competition		
	a. Gold Award Winner	_____	100
	b. Silver Award Winner	_____	50
H	Exhibition At Fairs And Shows		
	1. Animal Projects		
	a. Class Winner (1 st or 2 nd)	_____	10
	b. Breed Champion	_____	15
	c. Overall Champion (Grand or Reserve)	_____	25
	2. Agriculture Mechanics / Horticulture Projects		
	a. Outstanding Project	_____	25
	4. Showmanship		
	a. Top 10 Showmanship	_____	15
	b. Showmanship Champion	_____	25
	c. Round Robin Winner	_____	50

III Scholarship (Based On Semester Grade Only)

A	3.5 – 4.0+ Overall School Year GPA (all AHS classes)	_____	50
B	3.0 – 3.49 Overall School Year GPA (all AHS classes)	_____	25
C	2.5 – 2.99 Overall School Year GPA (all AHS classes)	_____	10

IV Judging Teams

A	Participation (Official FFA Contest)	_____	20
---	--------------------------------------	-------	----

Individual Placing		
1. Top 5 Overall	_____	20
2. Top 10 Overall	_____	10
Team Placing		
1. Top 5 Overall	_____	20
2. Top 10 Overall	_____	10

(Double All Of The Judging Team Point For State Finals)

The Coach Of Each Individual Team Will Award Each Time Member That He Feels Is Deserving A One Time Award Of 150 Point At The End Of The Year.

V Best Informed Greenhand, Co-Op Quiz, Public Speaking, Parliamentary Procedure, Creed And Opening And Closing Ceremonies Contest

A	Chapter Competition	_____	20
B	Sectional Competition	_____	25
C	Regional Competition	_____	30
D	State Competition	_____	50

VI National Competitions (Participation)

A	Judging Teams	_____	200
B	Parliamentary Procedures	_____	200

VII Proficiency Awards

A	Local	_____	25
B	Submitting Regional Application	_____	35
C	Region State	_____	50
D	Nation	_____	75
E	Final Four	_____	150

Chapter Constitution

Constitution of the Atwater FFA Chapter

Revised November 22, 2013

Article I: Names and Purposes

- Section A. The name of this organization shall be the Atwater Chapter FFA (Future Farmers of America) #CA0344
- Section B. The Purposes for which this Chapter is formed are as follows:
1. To improve agriculture conditions and practices in and about Merced County
 2. To develop agricultural skills or prepare for leadership, cooperative attitudes and rural responsibility, in individuals preparing to enter an agricultural occupation.
 3. To advance the cause of agriculture education and to encourage the FFA.
 4. FFA makes a positive difference in the lives of students by developing their potential for: premier leadership, personal growth and career success through agriculture education.

Article II: Organization

- Section A. The Chapter of the Future Farmers of America is a chartered local entity of the Merced-Mariposa Section of the California Association, made up of local members.

Article III: Membership Organization

- Section A. Membership in this organization shall be active and honorary.
- Section B. Membership is limited to students enrolled in Agriculture education at Atwater High School.
- Section C. Membership of graduates is limited to students that were active members their Senior year and graduated from high school.
- Section D. The Atwater FFA is a 100% affiliation Chapter with every student becoming a member of the FFA when they enroll in an agriculture class.
- Section E. No students may participate in any FFA activities unless they are members in good standing.
- Section F. The FFA Advisors at their own discretion have the right to dismiss any member from the Atwater FFA organization at any time.
- Section G. Active work in this chapter shall be carried on by active members.

- Section H. Award recipients must attend Chapter awards banquet to receive any awards.
- Section I. All members exhibiting livestock at fairs and shows must attend the fair awards ceremony with official uniform; jacket only.
- Section J. High School members exhibiting at fairs and shows must attend regular chapter meetings to be eligible to show. All graduates are strongly encouraged to attend agricultural related meetings or activities.

Article IV: Officers

- Section A. The chapter officers for the Atwater FFA shall be President, Vice President, Secretary, Treasurer, Reporter, Sentinel, and Historian.
- Section B. All elective chapter officers shall hold office for one year after election or until successors are selected as described in Article IV, Section G.
- Section C. Application for chapter office shall be available two weeks prior to selection of officers via the Nominating Committee . All applications will be screened by the nominating committee.
- Section D. Members holding the FFA Greenhand Degree, or higher, are eligible to hold office.
- Section E. All officers must be enrolled in the Agriculture Leadership class that meets daily during the term of their office.
- Section F. Officers who cannot fulfill their duties or who are impeached will be replaced by the first alternate selected by the Nominating Committee.
- Section G. No officer may be impeached without due process as defined in Article VII.
- Section H. The Nominating Committee shall select the chapter officers.
- Section I. The Nominating Committee shall be composed of two student representatives from the 9th grade, 10th grade, 11th grade, 12th grade, the retiring 12th grade FFA chapter president, and advisors. Nominating Committee members are not eligible to run for chapter office. In the event the current FFA chapter president is not in the 12th grade, their spot on the Nominating Committee will remain vacant. The Nominating Committee will review officer applications, conduct interviews of prospective candidates, and select each chapter officer via a unanimous vote within the Nominating Committee.
- Section J. The time for Nominating Committee selection shall be set by the FFA Officer Team, and the Advisors.

- Section K. All FFA chapter officers who fall below a 3.0 grade average in the Agriculture class(es), or become academically ineligible, will be put on probation for six week period. If by the end of the next six week period, the grade average has not improved to a 3.0 or above, or does not become academically eligible, they will be replace by the manner described in Article IV, Section G.
- Section L. All newly elected officers are required to attend the Chapter Officer Leadership Retreat to be held the summer prior to the school year that they service as an officer as well as the fall Chapter Officer Leadership Conference (COLC). Officers which do not attend the conference, except for reasons beyond their control, i.e. sever illness, death in the family, will be replace in the manner described in Article IV, Section G.
- Section M. Greenhand Officer Team for the Atwater FFA are allowed to consist of a team of 6, 7 (6 + Historian), or 8 (6 + Historian and Parliamentarian), depending on the yearly candidacy. The Greenhand Officer candidates will go through a nominating screening process. The nominating committee will consist of the FFA Officers and Chapter Advisor. All applications for Greenhand office shall be available two weeks prior to selection of Ggreenhand officers via the Nominating Committee. All applications will be screened by the nominating committee. All Greenhand officers must be enrolled in the Agriculture Leadership class that meets daily during the term of their office.

Article V: Duties of Officers

- Section A. The duties and responsibilities of Chapter Officer shall be:
1. Attend all Chapter and Chapter Officer meetings.
 2. Attend Chapter and Regional Officer Leadership Training Conference
 3. Cooperate with advisors on all activities.
 4. Be able to lead by example. Act and perform in a manner which is becoming of an FFA Chapter officer at all times.
 5. Be willing to memorize their parts as prescribed in the Official FFA Manual for all official ceremonies.
 6. Have a genuine interest in being part of a leadership **TEAM**.
 7. Be familiar with the Chapter constitution and bylaws.
 8. Be willing to accept responsibility.
 9. Be familiar with parliamentary procedure.
- Section B. The duties and responsibilities of the President shall be:

1. Preside over and conduct meetings according to accepted parliamentary procedure.
2. Call special meetings if needed.
3. Keep members on the subject and within time limits.
4. Appoint committees and serve as a non-voting member of them.
5. Call other offices to the chair as necessary or desirable.
6. Represent the Chapter and speak on occasions.
7. Coordinate Chapter efforts by keeping in close touch with the other Officers and members, and the advisors.
8. Follow up Chapter activities and check on progress being made.
9. Keep Chapter activities moving in a satisfactory manner.
10. Prepare agenda for Executive and Chapter meetings with the secretary.
11. Coordinate the activities of the Chapter and keep in touch with the progress of activities.

Section C. The duties of and responsibilities of the Vice-President shall be:

1. Assist the president.
2. Preside at meetings in absence of the president.
3. Be prepared to assume duties and responsibilities of the president.
4. In charge of insuring that all committee work of the Chapter is completed satisfactorily.
5. Responsible for the invocation at the Greenhand/Chapter Farmer awards ceremony, annual awards banquet and at other times when needed.

Section D. Duties and responsibilities of the Secretary shall be:

1. Prepare and read the minutes of the past meetings.
2. Have available for the President the list of business for each meeting.
3. Attend to office correspondence of the Chapter.
4. Prepare Chapter reports.
5. Keep the permanent records of the Chapter in the agriculture office.
6. Cooperate with the treasurer in keeping an accurate membership roster.
7. Call meetings to order in the absent of a presiding officer.
8. Read communication at meetings.
9. Have on hand for each meeting the following:
 - a. Secretary's book and minutes of previous meeting.
 - b. Lists of committee and committee reports.

- c. Copy of the Program of Activities.
- d. The Official FFA Manual.
- e. Copies of the Chapter Constitution and Bylaws.

10. Prepare, post and distribute motions.

11. Work with the Chapter advisor to ensure the Chapter's Point Award system is current and up to date

Section E. Duties and Responsibilities of the Reporter shall be:

- 1. Gather and classify Chapter news.
- 2. Prepare news notes and articles for publication or broadcast.
- 3. Send news notes to the state reporter and to the FFA New Horizons.
- 4. Arrange for FFA participation in local radio and/or TV Programs.
- 5. Work with the Chapter advisor to ensure the Chapter website is maintained and current.
- 6. Ensure all news releases and articles are approved by the Chapter Advisors prior to being released.
- 7. Maintain the Chapter camera equipment and make certain it is available for use at each and every FFA activity during the year.
- 8. Ensure photographs and/or video is taken at all Chapter events/activities throughout the year and properly saved/cataloged.

Section F. Duties and responsibilities of the Treasurer shall be:

- 1. Receive and act as custodian of Chapter funds.
- 2. Assist in preparing an annual budget of estimated receipts and expenditures.
- 3. Keep the financial records of the Chapter.
- 4. Devise appropriate ways and means of financing chapter activities.
- 5. Organize and implement Chapter funds as authorized by the student body.
- 6. Prepare financial statements and reports as needed.
- 7. Encourage systematic saving—individual and Chapter thrift.
- 8. Build up chapter's financial standing.

Section G. Duties and responsibilities of a Sentinel shall be:

- 1. Set-up the meeting room and care for chapter paraphernalia and equipment.
- 2. Attend to the door during meetings and welcome visitors.
- 3. See that the meeting room is kept comfortable.

4. Take charge of candidates for degree ceremonies.
5. Assist with entertainment features and refreshments.
6. Keep an accurate roll of those present at Chapter meetings.
7. Make arrangements with the custodial staff for microphones and audio equipment prior to their need.

Section H. Duties and responsibilities of the Historian shall be:

1. Keep and maintain the Chapter scrapbook.
2. Assist the reporter in maintaining the Chapter camera equipment and make certain it is available for use at each and every FFA activity during the year.
3. Assist the reporter in ensuring photographs and/or video is taken at all Chapter events/activities throughout the year and properly saved/cataloged.

Article VI: Impeachment

Section A. Immediate Impeachment

The FFA advisors may at any time at their own discretion remove an officer who has repeatedly disregarded his/her duties by not fulfilling them to his/her best ability.

Section B. Steps of Impeachment

Step 1. Any FFA Chapter officer not fulfilling the duties as described by this constitution will be required to meet with fellow officers and two Advisors to discuss a plan for improvement.

Step 2. A written plan of improvement will be drawn by the advisor based on the conversation of the meeting in Step 1, and will be confirmed and signed by the FFA President, Vice-President, and by the Officer in question.

Step 3. If the Officer in question still does not fulfill his/her duties, then a 2/3 vote of the Chapter officers and advisors will remove that Officer from office.

Article VII: Committees

Section A. A member may serve on not more than two committees at any one time and may only one committee if he/she is a chairperson of that committee.

Section B. The committee chairperson is responsible to call committee meetings and to see that all work that committee is assigned is performed.

Section C. That committee chairperson shall cooperate with the Chapter advisors and Chapter officers on all committee work.

Section D. That committee chairperson's report to the Chapter in writing will be the

result of all work performed by his/her committee including financial implications for the Chapter.

- Section E. No person having been chairperson on any committee shall be eligible to work on another committee until the written report is made by the committee.

Article XIII: Meetings

- Section A. Meetings shall be held once a month.
- Section B. The president shall have the power to call special meetings as the need arises.

Article IX: Dues

- Section A. As long as incentive grant funds are available, dues shall be paid for all members through that source.

Article X: Eligibility to Participate at Fairs and Judging Contests

- Section A. Eligibility of members exhibiting at fairs and shows will be based on the Advisor's discretion.
- Section B. Members must maintain a 2.0 GPA with no F's in an Agriculture class to be eligible to exhibit at fairs and judging events.
- Section C. Members must comply with rules and guidelines set forth by the Chapter committee on fairs and shows.
- Section D. In the event that a student becomes academically ineligible to participate at a fair at which they planned to exhibit livestock, he/she will be placed on academic probation by the Agriculture Department. If that student becomes ineligible again, he/she will lose his/her privilege to exhibit at all fairs with the Atwater FFA Chapter for the next semester.

Article XI: Amendments

- Section A. To amend the Constitution, a 2/3 vote of the active members is required.
- Section B. To become effective, the amendment must be posted for two weeks previous to the vote of the active members.

Article XII: Ratification of Constitution

- Section A. The Constitution should become effective when passed by 2/3 vote of the members voting.

Atwater FFA History – State FFA Degrees

The Atwater FFA became an official chapter (#281) with the California FFA Association during the 1957-1958 school year. The following pages showcase state and national chapter and individual recognition.

California State FFA Degree Recipients

The California State FFA Degree is the highest degree a student can earn at the state level. A State FFA Degree recipient has taken FFA involvement beyond the chapter level and had a successful SAE program. The following names are individuals who have earned their California State FFA Degree through the Atwater FFA:

1979-1980	Roslynn Williams	1985-1986
Kerwin Grissom	1983-1984	Scott Chatham
1980-1981	Monica Bairos	David Ferroni
Rich DeSousa	Monique Bolcao	Victoria Freitas
Kandace Heller	Loren Freitas	Tony Homen
Tom Schmidt	Sharee Lemas	Todd Lemas
Kevin Sorensen	Derick Locke	Justin Pareira
Andrew Todd	James Pacheco	Troy Rinkenberger
1981-1982	Catherine Schmidt	Scot Sherman
Chris Beutel	Trent Sherman	John Silva
Scott Clamp	Stan Souza	Kelly Vierra
Matt Machado	Joseph Vierra	Tony Wilson
Paul Machado	1984-1985	1986-1987
Kathy Pareira	Jessica Brooks	Mike Barry
Jon Schmidt	Greg Cardey	Chester Bradley
Robbie Stanford	Scott Cortinas	Melissa Brown
Andy Taylor	Danny Dutra	David Bryson
Sonya Veldhuis	Jeff Hammar	James Butrym
John White	Amber Houska	Allen Cline
Ryan Williams	Troy Lindenberg	Justin Covert
1982-1983	Rick Little	Liz Escobar
Stacy McDowell	Tina Nichols	Tammy Farmer
Greg Rieke	Jimmy Pitcock	Angela Grandov
Eric Sorensen	Todd Rinkenberger	Richard M. Gresio Jr.
Fred Souza	John Sexauer	Shirley Harrison
Ramie Stone	Fatima Silva	Beatrice Hildreth
Laura Terra	Toni Teixeira	Scott Koehn
	Manual Whitaker	Michelle Lemmon
		Marco Leao
		Elder Lopes
		Robert Lunsford

1986-1987(continued)

Mal Machado
 David McDowell
 Katherine Meadows
 Eileen Miller
 Sayf Munir
 Dayna Nachtigal
 Joseph Pacheco
 David Pearce
 David Pisacco
 Paul Stone
 Michelle Toconis
 Melissa Viera
 Christie Wood

1987-1988

John Blevins
 Duarte Borges
 Danielle Buzbee
 Chris Cardey
 Marc Haywood
 Scott Hosburgh
 Chris Kowalski
 Stefanie Prine
 Tracey Row
 Annette Stanford
 Melanie Toews
 Katrina Watson

1988-1989

Mike Burdick
 Lisa Cabral
 Nathan Cabral
 Ronda Codd
 Margaret Crawford
 Richard Freitas Jr.
 Jacklin Gamble
 Chris Hernandez
 James Lencioni
 Tony Lunsford
 Stayci Maddox
 Alicia McGrath
 Venita Sherrell
 Denise Strauss

1989-1990

Jeanna Alves
 Don Benordon
 Frank Cardenas
 Debra Cardoza
 David Corvelo
 Jared Covert
 Zak deBoer
 Tammy Fraguiglia
 Lynette McGill
 Jaime Macias
 Sean D. Mounts
 Chris O'Gara
 Jason Plagenza
 Bruce M. Santos
 Steve Santos
 Frank Shaw
 Wade A. Shaw
 Cherie Steck
 Joey Wren
 Jose A. Zarate

1990-1991

Ed Agueda
 Michelle Armas
 Nelly Barcelos
 Jennifer Clark
 Paul Garcia
 Kevin Hammon
 Jose Hernandez
 Adam Johnston
 Brian Laranjo
 Jaime Leon
 Lesa Prine
 Desiree Romero
 Jennifer Romero
 Shane Roppoli
 Stefanie St. John
 Tina White

1991-1992

Tony D. Agueda
 Richard Alvernaz
 Tony Avila
 Edward Casaday

Kaci Childers
 Norbet S. Duarte
 John Jimenez
 Jason Latronica
 Joseph F. Martin
 Ed Mello
 John Mendes
 Mary Nichols
 Shane D. Patterson
 Diahann J. Selkow
 David J. Souza
 Allison Tassey
 Mark Walker

1992-1993

David Avelar
 Matt Baptista
 Kory Billings
 Michelle Duarte
 Noel Nunes
 Mandy Rommel
 Jenny Silva

1993-1994

Danny Agueda
 Dario Avila
 Benjamin Bese
 Gerald Borba
 Joseph Burroughs
 Travis Cox
 Elia DelToro
 Gus DelToro
 Melissa Diaz
 Kathleen Does
 Levi Dukes
 Joey Dutra
 Luis Garaveto
 Paula Gonzales
 Joshua Hanson
 Jeremy Johnson
 Brian Keiser
 Cody Kingston
 Summer Lentz
 Anthony Lucich
 Manuel Machado
 Desi McComb

1993-1994
(continued)

Michelle Mello
Richard Mello
Horacio Oliveira
Tim Petersen
Jason Rider
Tara Rocha
Mark Sherman
Jeff Tucker
Sarah Walker
Libby Weathers
Randy White

1994-1995

John Anderson
Benina Burroughs
James Burroughs
Robin Gamble
Michelle Giordano
Samantha Guenther
Lee Lancaster
Richard Lancaster
Gina Lucich
Sean Martin
Jacob Martinez
Andy McMurry
Stacey Mello
Mark Pimentel
Abbi Plagenza
Gabriel Santos
David Sullivan

1995-1996

Leslie Avila
Spence Beckstead
Heather Carter
Adam Casso
Eric Harcksen
Goretti Machado
Isabel Madruga
Sage Miekke
Dave Nunes
Zach Plagenza
Sandy Richardson

Bryan Tassey
Janine Xavier

1996-1997

Gina Armas
Christina Avila
Holly Baker
Brian Baptista
Amy Bauer
Nicole Bettencourt
Mary F. Burroughs
Anthony Cabral
Janeffer Caetano
Kelly Etheridge
Tricia Fowler
Robert Fragulia
Erin Fucillo
Robert Gamble
Heather R. Gibson
Maria Hendrickson
Kari Loewen
Miguel Lopez
Matthew Migliazzo
Sara Miller
Patricia Johnson
Christina Parreira
Jarrod Pimentel
Stephanie Powers
Khyla Smith
Tait Tezo
Addie Trip

1997-1998

Elizabeth Avila
Craig Arnold
Suzanne Baker
Elizabeth Bristow
Shauna Brown
Angela Cabrera
Vanessa Carter
Karen Corvelo
April Frank
Jennifer Gallaway
Karie Haygood
Joey Horta
Rhett Kennedy

Laurie Lucich
Danny Machado
Frank Machado
Junior Machado
Jeremy Mancebo
Jeni McClesky
Bobbie Nelson
Alan Olivera
Shane Pack
Alan Oliveira
Shane Pack
Ryan Passadori
April Perry
Ramianne Plagenza
Katie Rommel
Kristi Rommel
Kristi Sliva
Allison Smith
Eric Souza
Corrie Stone
Jennifer Thomas
Jennifer Trinadale

1998-1999

Alex Alvarez
Stephanie Avila
Lindsey Buendia
Candice Burrola
Zebulon Borroughs
Cory Condren
Kenneth Correia
Annie Fagundes
Molly Fagundes
Justin Ferreira
Gary Goucher
Jason Haygood
Amber R. Huff
Amanda Johnson
Brad Kessler
Greg Kessler
Benjamin Migliazzo
David Nelson
Christopher Oliveria
LeeAnne Painter
Sarina Rocha
Cari Sedgwick
Kyle J Pimentel

Chris Smith
Nina Trindade

1999-2000

Debby Akers
Dann Ambriz
Garland Austin Jr.
Trista Condren
Tony Does
Matt Freeman
Jenette LaMere
Rosewitha Lancaster
Chor Moua
Bryan Ray
Ashley Regalo
Jennifer Sandford
Anthony Santos
Anthony Sodini
Steven Wolff
Jessica Trindade

2000-2001

Katie A. Arnold
Heather Barnes
Molly Bettencourt
Ryan Burnthorne
Meggie Fagundes
Linda Garcia
Denita Howard
LeAnne Lindenberg
Todd Machado
James Oliveria
Rianna Xavier

2001-2002

Cesar Avila
Leoterio Borges
Jenny Correia
Brandon Fullerton
Travis Hosburgh
Cynthia Machado
Jill McIver
Chris Migliazzo

John Migliazzo
Danny Royer
Tiffany Sheppa
Felipe Sousa
Shane Waterman

2002-2003

Tara Albrecht
Patricia Pimentel
Cesar Sanchez

2003-2004

Jason Does
Jacquelyn Grande
Bobby Lax
Sarah Magneson
Jessica McAdams
Cody Ratley
Amy Wright

2004-2005

Christy Copeland
Brandon Johnson
Christina Menezes
Jessica Mooneyham
Ryan Pimentel
Cece Villasenor
Rudy Ybarra

2005-2006

Denee Choquette
Kylie Lax
Julia Pedro
Eric Wunder

2006-2007

Javier Garcia
Caryn Granger
Richardo Luna

Annalysa Pimentel
Alys Scoggins
Rebbie Shelton
Brittini Wagner

2007-2008

Hector Ayala
Jake Baraldi
Jose Cardona
Kristelle Choquette
Shawn Conour
Ali Copeland
Bryce Dibble
Ceicali Kuykendall
Saul Lua
Milissa Payne
Catherine Payton
John Pedro
Brock Pisacco
Jorge Pulido
Katheline Reyes
Brenae Royal
Kaylyn Schiber
Lauren Thomas
Brogina Wagner
Lacey Wilcox
Donovan Woodward

2008-2009

Joslyn Apodaca
Kellie Bergstrom
Adam Cruz
Jenna Cruz
Stefani Dias
Amber Dutra
Jesus Gonzales
Briana Hamamoto
Curtis Kelly
Lauren Navarro
Matiana Rivera
Grant Rose
Amada Sevilla
Jenna Shelto

2009 – 2010

Guadalupe Ayala
 Terilyn Bettencourt
 Keziah Brigham
 John Brownwood
 Sasha Del Muro
 Laura Gonzalez
 Elani Goodhart
 Ricky Ornelas
 Paul Ortiz
 Ashely Payton
 Lilly Reyes
 Nikki Schiber
 William Thomas
 Collette Wilcox

2010 – 2011

Emily Beresford
 Timothy Demma
 Brian Dennis
 Marisa Jorge
 Samuel Lord-Huff
 Corey Mesa
 Jacob Minor
 Richard Ornelas
 Stephanie Quintana
 Mason Rose
 Vanessa Sevilla
 Nicole Sharafian
 Tawny Smith
 Amanda Solis
 James Summerton
 Christina Willman
 Matt Woods

2011 – 2012

Brandy Benefield
 Vanessa Del Toro
 Mayra Hernandez
 Nayeli Hernandez
 Chuck Lord-Huff
 Hilliary Junsay
 Brie Mansker
 Courtney Miscione

Sarah Rogers
 Carolyn Schiber
 Cheyenne Schoonover
 Cailyn Yerrick
 Jasmine Zapien

2012 – 2013

Susana Brasil
 Katelyn Davis
 Amy Dutra
 Taylor Ferreira
 Kevin Graham
 Valorie Hasko
 Heather Lewandowski
 Trazarra Manuel
 Kayla Marks
 Donald Moles
 Betsy Nielsen
 Thomas Payton
 Michele Rodriguez
 Logan Taylor
 Hans van Warmerdam
 Caresse Wilson-Cotter

2013 – 2014

Joanna Castro
 Ashley Clark
 Juan Favela
 Viviana Jimenez
 Giancarlo Kamesch
 Madison Kingston
 Kirsten Knobloch
 Francisco Macias
 Michael Marcelino
 Makala Navarro
 Karla Nuno
 Gilbert Rodriguez
 Kim Sabine
 Ryan Sanchez
 Bernadette Sevilla
 Jesse Tafoya
 Eduardo Vera
 Hannah van Warmerdam
 Keith Wright

2014 – 2015

Joseph Avila-Vargas
 Cheyenne Birmingham
 Francis Britton
 Austin Conour
 Sandra Duran
 Heidi Garcia
 Chrissy Lewandowski
 Joseph Kamesch
 Sam Knight
 Ryan Machado-Bell
 Amber Miller
 Wyatt Pimentel
 Emma Reyes
 Kati Reis
 Amanda Skidmore
 Andrew Skidmore
 Courtney Walsh
 Brittany Weins
 Sidney Weiss
 Alex Zapien

2015 – 2016

Dayana Argueta
 Vince Baraldi
 Austin Burris
 Blake Brigham
 Jeff Clark
 Courtney Creighton
 Jasmine Flores
 Trystan Geisbrecht
 Cynthia Griffin
 Madison Hall
 Juan Hernandez
 Juan Hurtado
 Daniel Mesa
 Juliet Montanez
 Erica Perez
 Brook Ramirez
 Tyler Russell
 Daniel Smith
 Christian Stallworth
 Jordan Turner
 Daniel Vann

2016 - 2017

Hannah Carrillo
Briana Diaz
Audrey Esau
Amanjot Gandhoke
Kelsi Kamesch
Callie Norton
Ariana Rezendez
Luke van Warmerdam
Natalie Williams
Kyle Yerrick

2017-2018

Marcos Ahumada
Kassia Beznoska
Paige Brigham
Zion Brigham
Kaya Briscoe
Makenna Caldie
Kendyll Cruz
Catalina Diaz
Megan Escobar
Belinda Espinoza
Dahlia Flores
Daisy Flores
Natalie Frontella
Jonathan Garcia
Nicholas Giesbrecht
Renessa Hardin
Emily Junez
Victoria Lopez
Ana Lozano
Emily McCartney
Sidney Miller
Anthony Naranjo
Ricardo Ortega,
Joel Rojas
Sayra Ramos
Samantha Theodozio
Wyatt Tucker
Stephania Valdovinos

Atwater FFA History – State/National Recognition

American FFA Degree Recipients

As the highest degree achievable in the National FFA Organization, receiving the American FFA Degree shows an FFA member's dedication to his or her chapter and state FFA associations. American FFA Degree recipients show promise for their future and have gone above and beyond to achieve excellence.

State Champion CDE Teams

Career development events (CDE's) are opportunities to develop skills that can be used in a future career. There are 24 different career development events available for team/individual competition at the state and national level.

Proficiency Award Recipients

Supervised Agriculture Experience (SAE) proficiency areas are programs where students are working for an individual or business for the experience or for pay. There are 51 proficiencies recognized at the state and national level.

The following is a history of state and national awards/accomplishments recognizing the Atwater FFA Chapter and Atwater FFA individuals:

<u>1979-1980</u>	<u>1985-1986</u>
<u>Superior Chapter</u>	<u>American Degree</u> – Chris Sumpter <u>Star Farmer</u> – Todd Rinkenberger
<u>1980-1981</u>	<u>1986-1987</u>
<u>Superior Chapter</u>	<u>Honorary American Farmer</u> – Ray Munir <u>National Scholoarship</u> – Greg Cardey <u>State Treasurer</u> – Todd Rinkenberger
<u>1981-1982</u>	<u>1987-1988</u>
<u>Star Advisor</u> – Stan Mollart	<u>American Degree</u> – Greg Cardey, Loren E. Freitas, Victoria A. Freitas, Todd Rinkenberger <u>Central Region President</u> – Sayf Munir <u>National Scholarships</u> – Sayf Munir <u>Proficiency Award in Swine Production</u> – Joseph Pacheco <u>Star in Ag Business</u> – Duarte Borges
<u>1982-1983</u>	<u>1988-1989</u>
<u>Superior Chapter</u>	<u>Honorary American Farmer</u> – Mark Anglin <u>Proficiency Award in Agricultural Mechanics</u> – Doug Cameron II
<u>1983-1984</u>	
<u>Star Reporter</u> – JoAnn Lourenco <u>Superior Chapter</u>	
<u>1984-1985</u>	
<u>Central Region President</u> – Monique Bolaco <u>Specialty Animal Production</u> – Jessica Brooks <u>Star Advisor</u> – Ray Munir	

1989-1990

American Degree– Duarte Borges, David Bryson,
Scott Koehn, Sayf Munir, Dayna Nachtigal, Joseph
Pacheco, Scot Sherman
Proficiency Award in Horse Production– Lynnette
McGill
State Champion CDE– Parliamentary Procedure
Novice

1990-1991

American Degree– Chris Cardey
State Champion CDE–Parliamentary Procedure
Advanced

1991-1992

Agriscience Teacher of the Year– Ray Munir
Proficiency Award in Placement in Agricultural
Production–Bruce Santos
State Champion CDE– Light Horse
Superior Chapter

1992-1993

American Degree– Lynnette McGill, Bruce Santos
Superior Chapter

1993-1994

National Scholarship– Noel Nunes
Proficiency Award in Horse Production– Mandy
Rommel
Proficiency Award in Placement in Agricultural
Production– Norbert Duarte
Superior Chapter

1994-1995

American Degree– Eduard Mello, Shane Patterson,
David Souza
National Scholarships– Libby Weathers
Proficiency Award in Swine Production– John
Anderson
Star Farmer– Noel Nunes
State Scholarships– Allison Tassey
Superior Chapter

1995-1996

American Degree– Mandy Rommel, Allison Tassey
State Champion CDE– Fruit Judging, Marketing Plan
Superior Chapter

1996-1997

American Degree– John Anderson, Dario Avila,
Anthony A. Lucich, Manuel Machado, Mark
Sherman, Libby Weathers
Central Region President– Bryan Tassey
National Convention Delegate– Bryan Tassey
Proficiency Award in Pomolgy Production
Placement– Eric Harcksen
Star Advisor– Mark Anglin
State Champion CDE– Milk Quality and Dairy Foods
Superior Chapter

1997-1998

American Degree– Benina Burroughs, Gabriel Santos
National Proficiency Award in Fruit and Vegetable
Production– Eric Harcksen
Proficiency Award in Soil and Water Management–
Eric Harcksen
Proficiency Award in Specialty Crop Production–
Allison Smith
Proficiency Award in Wildlife Management– Suzanne
Baker
Superior Chapter

1998-1999

American Degree– Eric Harcksen, Bryan Tassey,
Janine Xavier
National Proficiency Award in Wildlife Management–
Suzanne Baker
Proficiency Award Olericulture Production
Entrepreneurship– Craig Arnold
Star Reporter– Molly Fagundes
Superior Chapter

1999-2000

American Degree– Christina Avila, Holly Baker, Adam
Casso, Tricia Fowler, Jennifer Galalway, Patricia

Johnson, Rhett Kennedy, Frank Machado, Matthew Migliazzo, Bobbie Nelson, Jenni McCleskey, Shane Peck

National Convention Delegate– Molly Fagundes
National Scholarship– Molly Fagundes
Proficiency Award in Ag Communications– Elizabeth Avila
Proficiency Award in Dairy Production Placement– Danny Machado
National FFA Chapter Award – Gold Recipient

2000-2001

American Degree– Craig Arnold, Karie Haygood, Christina Hendrickson, Joey Horta, Brad Kessler, Danny Machado, Alan Oliveira Jr., Katie Rommel, Kristi Silva, Carrie Stone, Jennifer Trindade, Joey Xavier
Proficiency Award in Beef Production Placement– Zeb Burroughs
Proficiency Award in Food Science and Technology– Molly Fagundes
State Champion CDE– Prepared Speaking; Meggie Fagundes
State Star Reporter– Meggie Fagundes
Superior Chapter

2001-2002

Central Region President– Meggie Fagundes
State Vice President– Molly Fagundes

2002-2003

State Scholarship– Molly Fagundes
Superior Chapter

2003-2004

Superior Chapter

2004-2005

American Degree– Meggie Fagundes
Star State Reporter– Mai Chia Yang
State Band– Jorge Pulido, Brenae Royal

State Champion CDE– Milk Quality and Dairy Foods
Superior Chapter

2005-2006

American Degree– Bobby Lax, John Migliazzo
National Convention Delegate– Christina Menezes
State Champion CDE– Floriculture
State Scholarship– Christina Menezes
Superior Chapter

2006-2007

Star State Reporter– Kaylyn Schiber
State Band– Katheline Reyes, Brenae Royal
Superior Chapter

2007-2008

Star Administrator– Linda Lucas
State Band– Jorge Pulido, Brenae Royal, Katheline Reyes
Superior Chapter

2008-2009

State FFA Reporter – Kaylyn Schiber
Star State Reporter – Lilly Reyes
State Champion CDE – Nursery and Landscape
State Champion CDE Scrapbook – Atwater FFA
State Band – Elani Goodhart, Stefani Dias
Superior Chapter

2009 – 2010

American Degrees – Kaylyn Schiber
CATA/NAAE – 2010 Outstanding California Middle/Secondary High School Agriculture Program
Star State Reporter – Mekayla Coughran
State Champion CDE – Light Horse
State Band – Elani Goodhart
State Nominating Committee – Terilyn Bettencourt
Superior Chapter

2010 – 2011

American Degree – Lauren Navarro
Star Agriscience Teacher – Beth Knapp
Star State Reporter – Carolyn Schiber
State Champion CDE – Agronomy
Superior Chapter

2011 – 2012

American Degree – Stefani Dias
CATA Teacher of Excellence – Dave Gossman
National FFA Chapter Award – Gold Recipient
State Champion CDE – Agronomy
State Champion CDE – Milk Quality and Dairy Foods
Superior Chapter

2012 – 2013

American Degree – Mason Rose
National FFA Chapter Award – Gold Recipient
State Champion CDE – Agronomy
State Champion CDE – Milk Quality and Dairy Foods
Superior Chapter

2013 – 2014

American Degree – Corey Mesa
CATA – 2014 Outstanding California
Middle/Secondary High School Agriculture Program
National FFA Chapter Award – Gold Recipient
Star State Reporter – Emma Reyes
State Champion CDE – Ag Mechanics
State Champion CDE – Agronomy
State Champion CDE – Cotton
State Champion CDE – Milk Quality and Dairy Foods
Superior Chapter

2014 – 2015

CATA – 2015 Outstanding Young Teacher Award –
Natalie Borba
CATA Teacher of Excellence – Sam Meredith
State Champion CDE – Cotton
State Champion CDE – Grapevines
National FFA Chapter Award – Gold Recipient
Superior Chapter

2015 – 2016

CATA Teacher of Excellence – Sam Meredith
State Champion CDE – Extemporaneous Speaking
(National Champion)
State Champion CDE – Marketing Plan (National
Champion)
State Champion CDE – Milk Quality and Dairy Foods
Superior Chapter

2016-2017

State Champion CDE – Agronomy
State Champion CDE – Floriculture
State Champion CDE – Nursery and Landscape
State FFA President – Andrew Skidmore
State FFA Secretary – Amanda Skidmore
Superior Chapter

2017-2018

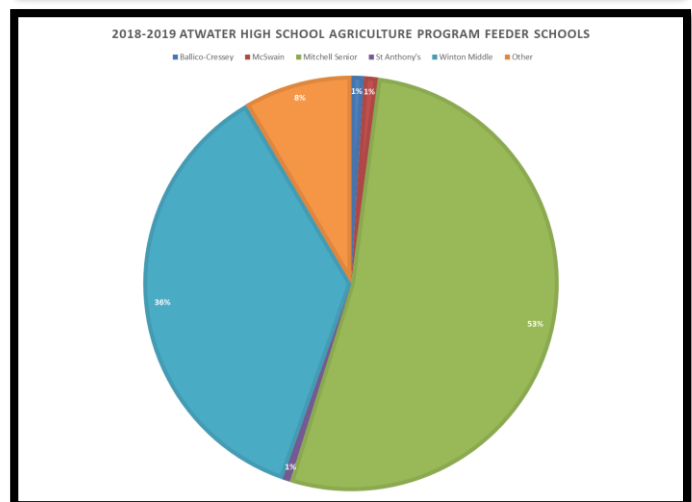
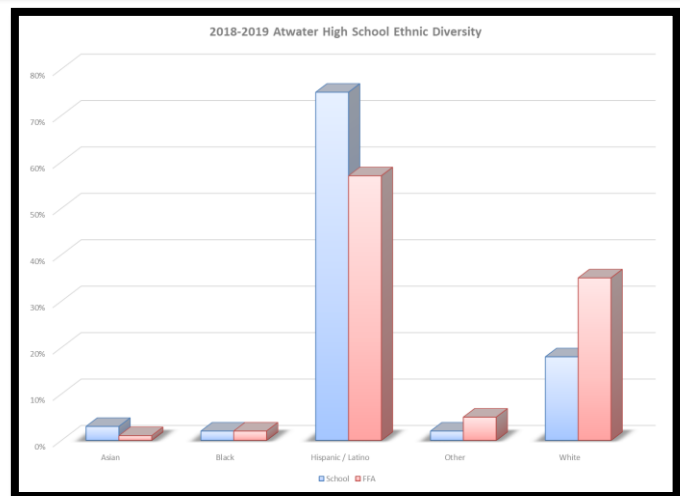
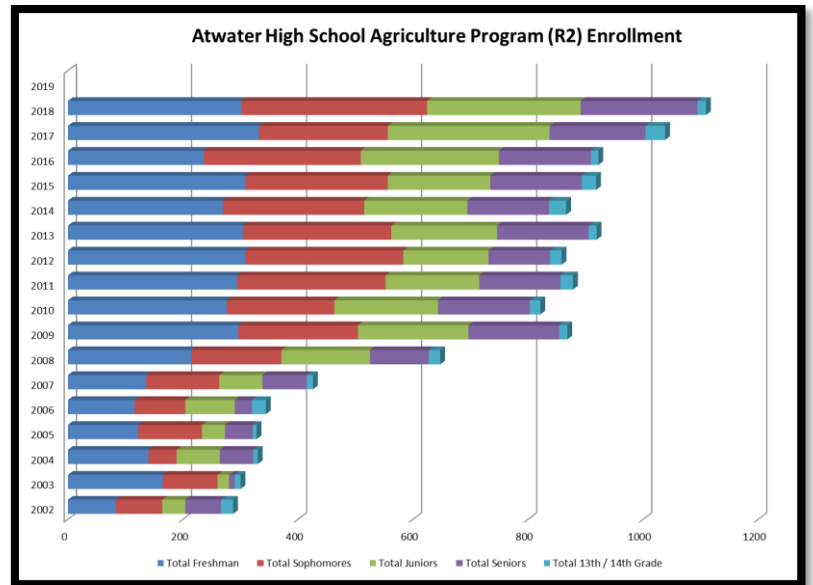
American Degree – Courtney Creighton
American Degree – Jasmine Flores
American Degree – Madison Hall
American Degree – Wyatt Pimentel
State FFA Vice President – Jasmine Flores
State / National FFA Proficiency in “Small Animal
Production and Care – Kaya Briscoe
Superior Chapter

Atwater High School Agriculture / FFA Enrollment History

California Agriculture Education – R-2 Enrollment
(Individual students enrolled in agriculture courses)

YEAR

2002	287 students
2003	300 students
2004	330 students
2005	328 students
2006	344 students
2007	426 students
2008	647 students
2009	868 students
2010	821 students
2011	878 students
2012	858 students
2013	919 students
2014	866 students
2015	918 students
2016	922 students
2017	1038 students
2018	1109 students
2019	
2020	
2021	
2022	

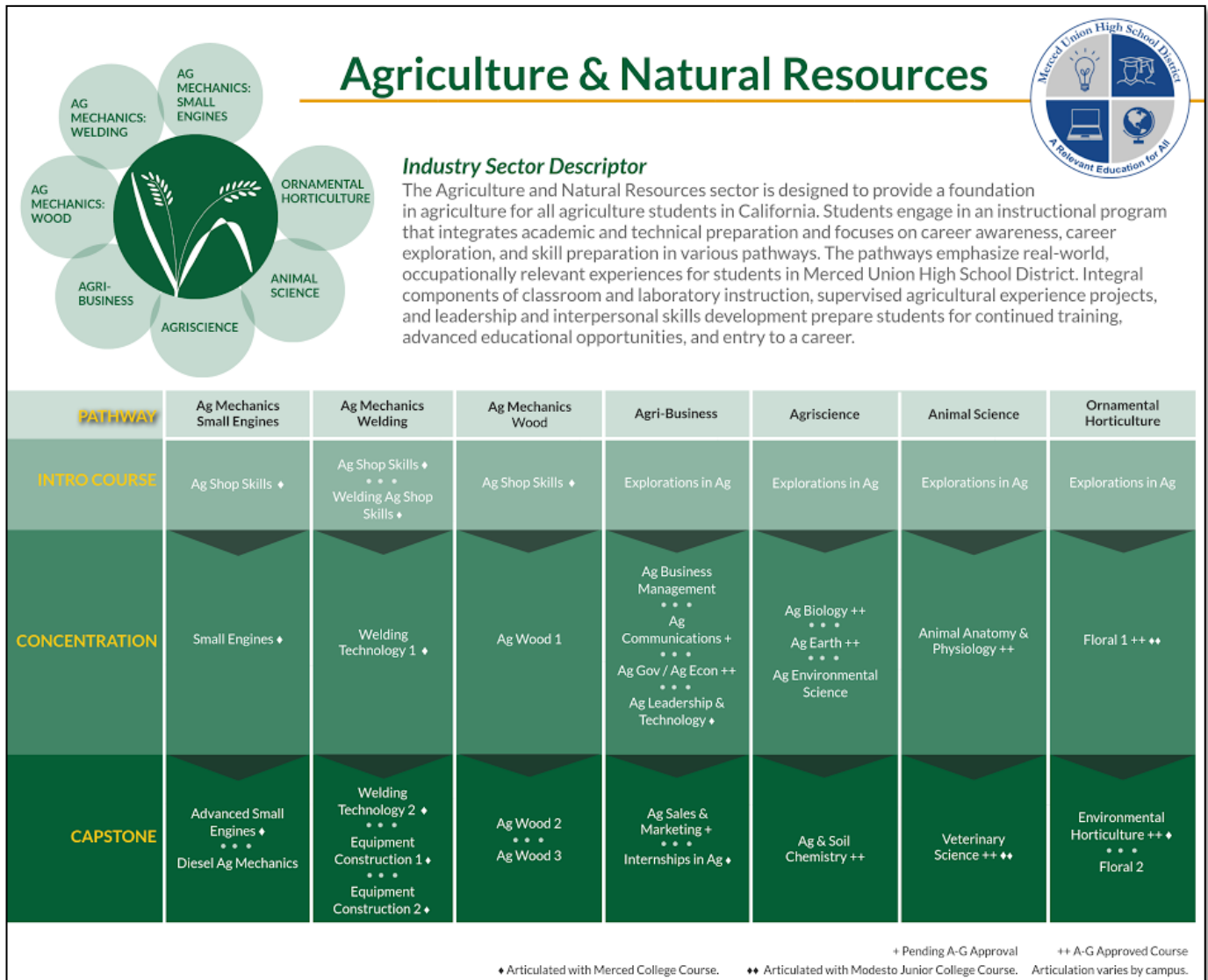


Atwater High School Agriculture Department Course Enrollment Data

Past 10 Years: 2008 - 2018

Course Enrollment			2008	2009	2010	2011	2012	2013	2014	2015	2016	2017	2018
1st	**	Ag Biology	211	332	191	265	227	271	194	244	221	249	216
Year	*	Ag Shop Skills	92	126	56	86	106	109	74	126	75	135	156
Courses	*	Exploration in Agriculture	n/a	n/a	n/a	n/a	n/a	72	32	61	55	70	73
2nd/3rd	**	Ag Earth Science	96	146	104	115	152	201	173	165	178	203	159
		Ag Wood Construction I	19	31	59	18	26	22	58	59	59	56	95
	**	Animal Anatomy/Physiology	n/a	n/a	n/a	n/a	n/a	n/a	n/a	n/a	n/a	n/a	33
		Small Engines	11	27	27	26	24	68	51	67	58	86	99
3rd / 4th		Welding Tech 1	33	40	53	57	65	50	57	45	53	79	81
		Adv Sm Eng / Power Mechanics	0	31	19	26	31	32	39	26	22	26	29
		Ag Economics / Government	n/a	n/a	38	38	34	36	39	41	41	39	64
		Ag Leadership	19	29	26	28	35	35	49	55	58	55	22
Year		Ag Soil and Chemistry	n/a	n/a	n/a	n/a	n/a	n/a	n/a	n/a	n/a	n/a	76
		Ag Wood Construction II	13	20	23	25	6	11	7	13	10	19	21
		Ag Wood Construction III	3	5	13	3	12	1	5	4	5	2	7
		Art & History of Floral Design I	79	80	128	122	116	120	155	108	145	159	195
Courses		Art & History of Floral Design II	n/a	n/a	n/a	n/a	n/a	n/a	10	20	26	32	55
	**	Environmental Horticulture	12	34	16	35	31	21	31	25	22	38	55
		Equipment Construction	10	10	8	4	5	5	4	6	10	12	23
	**	Veterinary Science	34	32	59	36	37	38	39	28	29	38	76
		Welding Tech II	18	14	14	19	22	18	19	21	25	19	29
Courses		Ag Business Management	n/a	n/a	n/a	n/a	n/a	n/a	23	n/a	n/a	n/a	n/a
	**	Ag Environmental Science	n/a	34	65	72	35	55	n/a	n/a	n/a	n/a	n/a
	**	Ag Food Science	n/a	n/a	n/a	n/a	n/a	28	n/a	n/a	37	34	n/a
	*	Ag Life Science	90	76	110	111	107	n/a	71	37	29	30	n/a
	**	Ag Science I	n/a	n/a	n/a	n/a	n/a	n/a	n/a	n/a	n/a	n/a	n/a
	**	Ag Science II	n/a	n/a	n/a	n/a	n/a	n/a	n/a	n/a	n/a	n/a	n/a
		Internships in Ag I/II	n/a	n/a	n/a	n/a	n/a	n/a	n/a	n/a	n/a	n/a	n/a
Total Course Enrollment:			740	1067	1009	1086	1071	1193	1130	1151	1158	1381	1564
			* Freshman entry course										
			** Science Graduation Credit										
			*** Primarily non-Ag students. Covered Industrial Tech students										
R-2 Information (Individual Entry)			2008	2009	2010	2011	2012	2013	2014	2015	2016	2017	2018
		Freshman Year 1 Ag	214	296	276	294	308	304	269	308	n/a	332	301
		Sophomores Year 1 Ag	75	72	34	64	24	74	40	76	n/a	87	81
		Juniors Year 1 Ag	64	78	48	26	28	41	28	49	n/a	96	76
		Seniors Year 1 Ag	51	56	43	41	34	37	32	44	n/a	40	28
		Sophomores Year 2 Ag	82	136	153	194	251	184	206	171	n/a	137	242
		Juniors Year 2 Ag	35	62	53	26	19	29	36	29	n/a	56	81
		Seniors Year 2 Ag	18	41	36	24	9	30	20	7	n/a	32	54
		Juniors Year 3 Ag	55	52	74	111	101	114	115	100	n/a	129	110
		Seniors Year 3 Ag	10	21	35	27	10	30	12	32	n/a	42	37
		Seniors Year 4 Ag	23	40	44	49	64	62	78	76	n/a	53	84
		Continuing FFA Enrolled Graduates	20	14	18	15	20	14	30	25	n/a	34	15
			2008	2009	2010	2011	2012	2013	2014	2015	2016	2017	2018
		Total Freshman	214	296	276	294	308	304	269	308	236	332	301
		Total Sophomores	157	208	187	258	275	258	246	248	273	224	323
		Total Juniors	154	192	180	163	148	184	179	178	240	281	267
		Total Seniors	102	158	160	141	107	159	142	159	160	167	203
		Total AHS Ag Enrollment	627	854	803	856	838	905	836	893	909	1004	1094
		Total 13th / 14th Grade	20	14	18	22	20	14	30	25	13	34	15
		Total AHS FFA (R-2) Enrollment	647	868	821	878	858	919	866	918	922	1038	1109

Primary Atwater High School Agriculture Program (R-2) Pathways



Notes

#1 – The chart above pertains to “established” pathways within state CTE sectors.

#2 – The Atwater High School Agriculture program also has “partial” Ag Business pathway, however that pathway does not have full-time enrollment or permanent “4 year pathway” courses to establish/implement fully.

Atwater High School Agriculture Department 2018-2019 Budget

2018 - 2019 Atwater High School Agriculture Department / Atwater FFA Budget																			
	FFA General Acct	FFA Floral Acct	FFA Hort Acct	FFA Metal Acct	FFA Wood/Eng Acct	MUHSD Trans Acct	MUHSD & AIG (Matching Total) Acct	MUHSD Special/General Acct	Carl Perkins Acct	AHS Site Acct	Total								
REVENUE																			
Ag Boosters Allocation	\$ 13,000.00			\$ 500.00			\$ 24,600.00				\$ 14,000.00								
Ag Incentive Grant							\$ 24,600.00				\$ 24,600.00								
Ag Incentive District Match										\$ 6,800.00	\$ 6,800.00								
AHS Site Allocation									\$ 48,000.00		\$ 48,000.00								
Community Donations (Nationals)	\$ 1,000.00							\$ 18,000.00			\$ 1,000.00								
CRAECP Pathway Grant								\$ 165,000.00			\$ 165,000.00								
CTIEG Grant								\$ 26,000.00			\$ 26,000.00								
District CTE Projects / General																			
District Transportation Allocation						\$ 7,775.00					\$ 7,775.00								
Fall Fest Fundraiser	\$ 8,000.00	\$ 1,000.00	\$ 1,000.00	\$ 1,000.00	\$ 1,000.00						\$ 12,000.00								
Floral Projects		\$ 14,000.00									\$ 14,000.00								
Horticulture Projects			\$ 6,000.00								\$ 6,000.00								
Merced Fair Projects (Premiums/Awards)				\$ 1,500.00							\$ 1,500.00								
Metal Shop Projects				\$ 16,500.00							\$ 16,500.00								
Milk Vending Machine	\$ 2,000.00										\$ 2,000.00								
Placemat Ad Fundraiser	\$ 7,000.00										\$ 7,000.00								
SaveMart SHARES Program	\$ 1,000.00										\$ 1,000.00								
Specialized / Ag Industry Grant											\$ -								
State CTE Grants								\$ 7,500.00			\$ 7,500.00								
Student Shop Project Loan	\$ 18,000.00										\$ 18,000.00								
Take-Out BBQ Fundraisers					\$ 4,000.00						\$ 4,000.00								
Wood / Eng. Shop Projects																			
TOTAL	\$ 50,000.00	\$ 15,000.00	\$ 7,000.00	\$ 19,500.00	\$ 5,500.00	\$ 7,775.00	\$ 49,200.00	\$ 216,500.00	\$ 48,000.00	\$ 6,800.00	\$ 425,275.00								
Expenses											Total								
Ag Staff / CATA Professional Development							\$ 375.00		\$ 7,100.00		\$ 7,475.00								
Ag/FFA Marketing & Promotion	\$ 3,000.00						\$ 2,000.00				\$ 5,000.00								
Ag / Facility Equipment / Supplies								\$ 4,000.00	\$ 24,600.00		\$ 24,600.00								
Classroom/Lab Equipment											\$ 4,000.00								
Classroom/Lab Supplies							\$ 6,000.00				\$ 6,000.00								
FFA Events, Activities, and Transportation	\$ 10,000.00										\$ 10,000.00								
FFA Field Day Registrations/Hotel	\$ 5,000.00						\$ 3,500.00				\$ 8,500.00								
FFA Leadership Conferences/Retreats	\$ 5,000.00										\$ 5,000.00								
FFA Meetings (Food, Supplies, etc.)	\$ 4,000.00						\$ 4,000.00				\$ 8,000.00								
FFA Membership Dues							\$ 8,300.00				\$ 8,300.00								
FFA National Convention									\$ 4,000.00		\$ 4,000.00								
FFA State Leadership Convention	\$ 5,000.00						\$ 8,000.00		\$ 4,000.00		\$ 17,000.00								
FFA Supplies	\$ 1,700.00						\$ 4,700.00				\$ 6,400.00								
FFA/Ag Transportation						\$ 7,775.00			\$ 8,300.00	\$ 5,000.00	\$ 21,075.00								
FFA/Fair Equipment and Supplies	\$ 2,000.00										\$ 2,000.00								
Floral Equipment		\$ 2,000.00						\$ 50,000.00			\$ 52,000.00								
Floral Supplies	\$ 1,000.00	\$ 13,000.00					\$ 5,000.00	\$ 4,000.00			\$ 19,000.00								
Horticulture Equipment											\$ 4,000.00								
Horticulture Supplies / Plant Stock			\$ 6,000.00							\$ 1,800.00	\$ 4,800.00								
Office/Operation Supplies & Equip	\$ 3,000.00							\$ 2,000.00			\$ 2,000.00								
Poultry Facility / Equipment / Supplies	\$ 3,300.00							\$ 45,000.00			\$ 48,300.00								
School Farm Facility / Equipment / Supplies								\$ 26,000.00			\$ 26,000.00								
Sm Engine / Wood Shop Equipment & Maint.					\$ 2,500.00						\$ 2,500.00								
Sm Engine / Wood Shop Supplies & Materials	\$ 1,000.00				\$ 3,000.00		\$ 1,325.00				\$ 5,325.00								
Student Fundraising Incentives	\$ 5,000.00										\$ 5,000.00								
Student Shop Loan Repayment								\$ 7,500.00			\$ 7,500.00								
Welding Shop Equipment & Maint.				\$ 1,500.00				\$ 78,000.00			\$ 79,500.00								
Welding Shop Supplies	\$ 1,000.00			\$ 18,000.00			\$ 6,000.00				\$ 25,000.00								
TOTAL	\$ 50,000.00	\$ 15,000.00	\$ 6,000.00	\$ 19,500.00	\$ 5,500.00	\$ 7,775.00	\$ 49,200.00	\$ 216,500.00	\$ 48,000.00	\$ 6,800.00	\$ 424,275.00								

Atwater High School Agriculture Department 2018-2019 Staff Assignments/Responsibilities

[illegible]

		Borba	Davenport	Flatt	Gossman	Helton	Macintosh	Meredith	Vargas	West
Animal / Livestock										
Fair Supplies		X	X	X	X	X	X	X	X	X
Pole Barn - Goats / Vet Science Lab		X								
Pole Barn - Rabbits										X
Poultry (Chickens / Eggs) Facility									X	
Poultry (Turkeys) Facility										X
School (Arnold's) Farm (Sheep)						X				
School (Arnold's) Farm (Swine)					X					
Veterinary Supplies		X			X					X
		Borba	Davenport	Flatt	Gossman	Helton	Macintosh	Meredith	Vargas	West
Horticulture Facility										
Ag Building Garden Plots					X					
Farm / Crop Lab (Sweet Potatoes)				X						
Floriculture / Outside Floral Fridge			X							
General Care and Maintenance					X					
Grape Vineyard					X					
Greenhouse					X					
Horticulture Equipment Maintenance					X					
Lathe House					X					
Mini-Orchard Lab					X					
Nursery Facility / Gardens					X					
OH Storage Containers					X					
Pole Barn Horticulture					X					
Rose Lab					X					
School Planter Beds (Floral)			X							
		Borba	Davenport	Flatt	Gossman	Helton	Macintosh	Meredith	Vargas	West
Shop / Equipment / Machinery										
Ag Shop Maintenance - Welding Shops								X		
Ag Shop Maintenance - Power Mechanics				X						
Ag Shop Maintenance - Wood				X						
Ag Trucks								X		
BBQ Trailers								X		
Floral Trailer Maintenance			X							
Forklift Maintenance				X						
Livestock Trailers								X		
School Shop and Equipment				X				X		
Shop Nights				X				X		
Storage Buildings/Containers								X		
Tractor Maintenance				X						
		Borba	Davenport	Flatt	Gossman	Helton	Macintosh	Meredith	Vargas	West
Project Supervision										
Ag Mechanics				X				X	X	
Beef Projects								X		
Dairy Cattle Projects							X			
Goat Projects		X								
Floriculture Projects			X							
Horticulture Projects					X					
Poultry (Chickens)				X						
Poultry (Turkeys)										X
Rabbits										X
Sheep Projects						X				
Swine Projects					X					
Work Experience Projects		X	X	X	X	X	X	X	X	X
		Borba	Davenport	Flatt	Gossman	Helton	Macintosh	Meredith	Vargas	West
FFA Judging Teams / Contests										
Ag Mechanics								X		
Agronomy							X			
Cotton		X								
Creed Speaking		X								
Dairy Products					X					
Extemporaneous Speaking							X			
Farm Records										X
Floriculture			X							
Impromptu							X			

				Borba	Davenport	Flatt	Gossman	Helton	Macintosh	Meredith	Vargas	West
FFA Judging Teams / Contests (Cont.)												
	Job Interview										X	
	Land							X		X		
	Meats			X								
	Nursery and Landscape (Horticulture)						X					
	Opening and Closing Advanced			X								
	Opening and Closing Novice			X	X	X	X		X	X	X	X
	Parliamentary Procedure (Novice)							X				
	Parliamentary Procedure (Advanced)											X
	Poultry					X			X			
	Prepared Public Speaking				X							
	Small Engines										X	
	Vegetables										X	
				Borba	Davenport	Flatt	Gossman	Helton	Macintosh	Meredith	Vargas	West
Awards												
	Awards Banquet			X	X	X	X	X	X	X	X	X
	Award Orders (National FFA / Trophy Case)						X					
	Greenhand / Chapter Farmer Awards Ceremony			X	X	X	X	X	X	X	X	X
	National Chapter Award Application			X								
	Scholarships								X			
	POA Tabulations								X			
	Proficiency Awards											X
				Borba	Davenport	Flatt	Gossman	Helton	Macintosh	Meredith	Vargas	West
Fundraisers												
	Ag Mechanics Projects (Plasma Art, Wood, and Engines)					X				X		
	"Fall Fest" Fundraiser Organization, Donations, Tickets, Auction						X				X	
	"Fall Fest" Fundraiser Food / Drink			X					X	X		
	"Fall Fest" Fundraiser Decorations / Set-Up				X	X		X				X
	Floral Projects - Balloons				X							
	Floral Projects - Graduation				X							
	Floral Projects - Homecomings / School Specialty Events				X							
	Floral Projects - Prom				X							
	Floral Projects - Subscriptions				X							
	Floral Projects - Weddings / Specialty Events				X							
	Floral Projects - Winter Formal				X							
	Football Game BBQ Supervisor (1 Game Each)				X	X	X	X		X	X	X
	Plant Sale (Fall)						X			X		
	Plant Sale (Spring)						X			X		
	Placement Ads						X					
	Save Mart S.H.A.R.E.S. Program						X					
	Take-Out BBQ's (4) Cooking					X				X		
	Take-Out BBQ Costco					X			X			X
	Take-Out BBQ Meat Pick-up					X				X		
	Take-Out BBQ Supervision				X			X	X		X	X
	Take-Out BBQ's Ticket Printing/Accounting/Deposit			X								

Atwater High School Agriculture Department
Atwater FFA
PO Box 835
2201 Fruitland Ave
Atwater, CA 95301
209-357-6025
www.AtwaterFFA.org